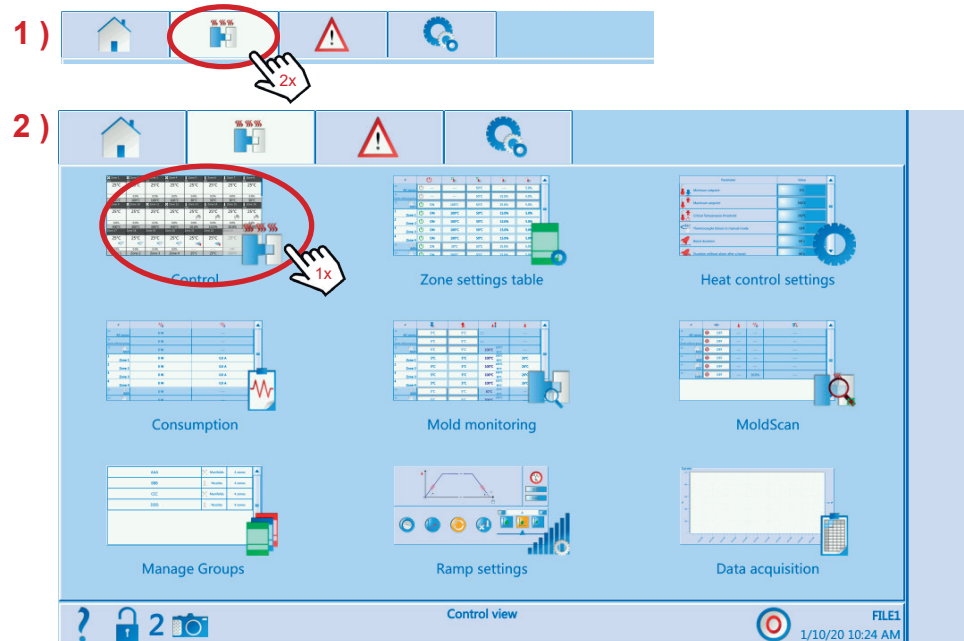
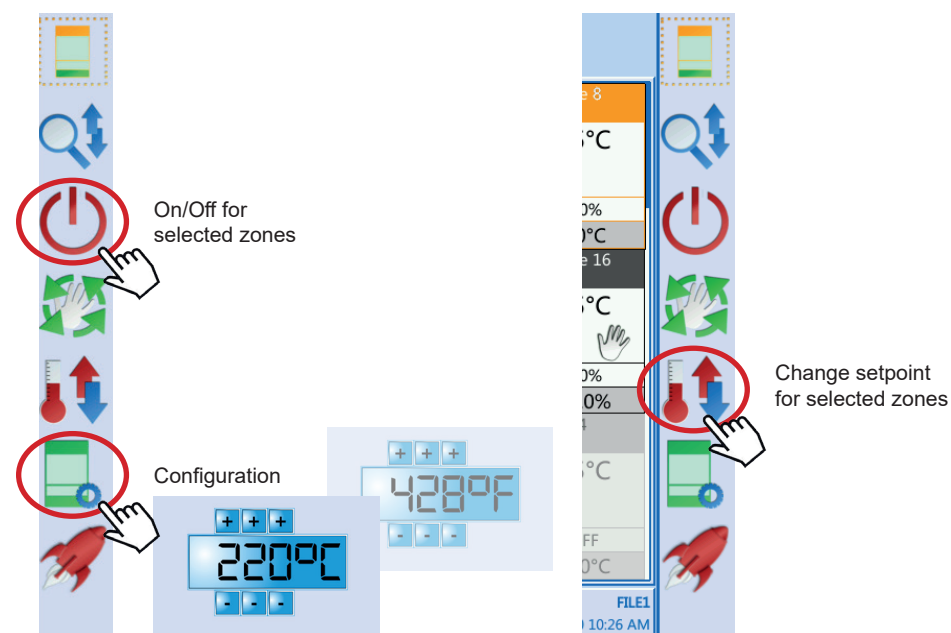


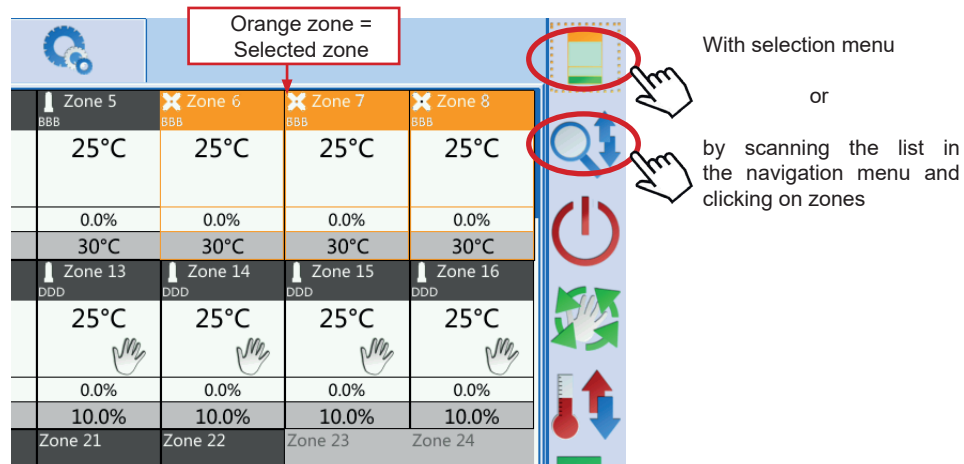
1 **GO TO THE CONTROL PAGE**



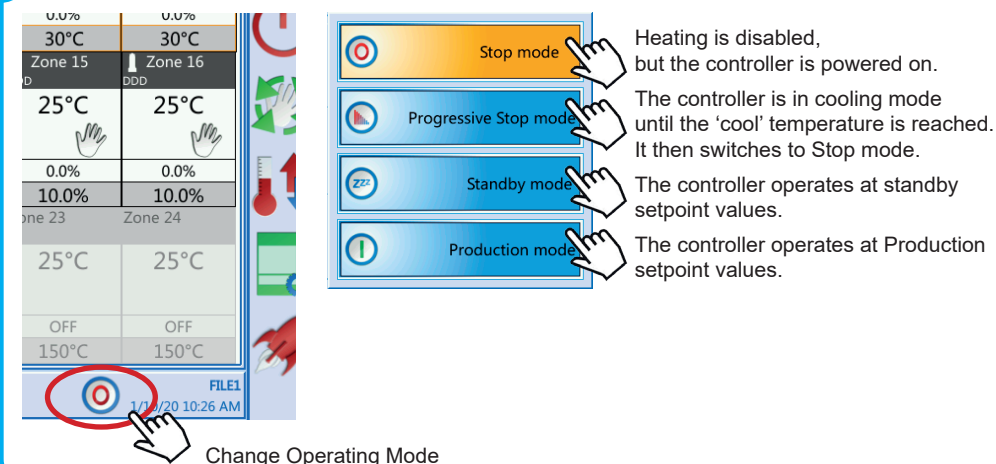
3 ACTIVATE AND SET ZONE PARAMETERS



2 SELECT ZONES



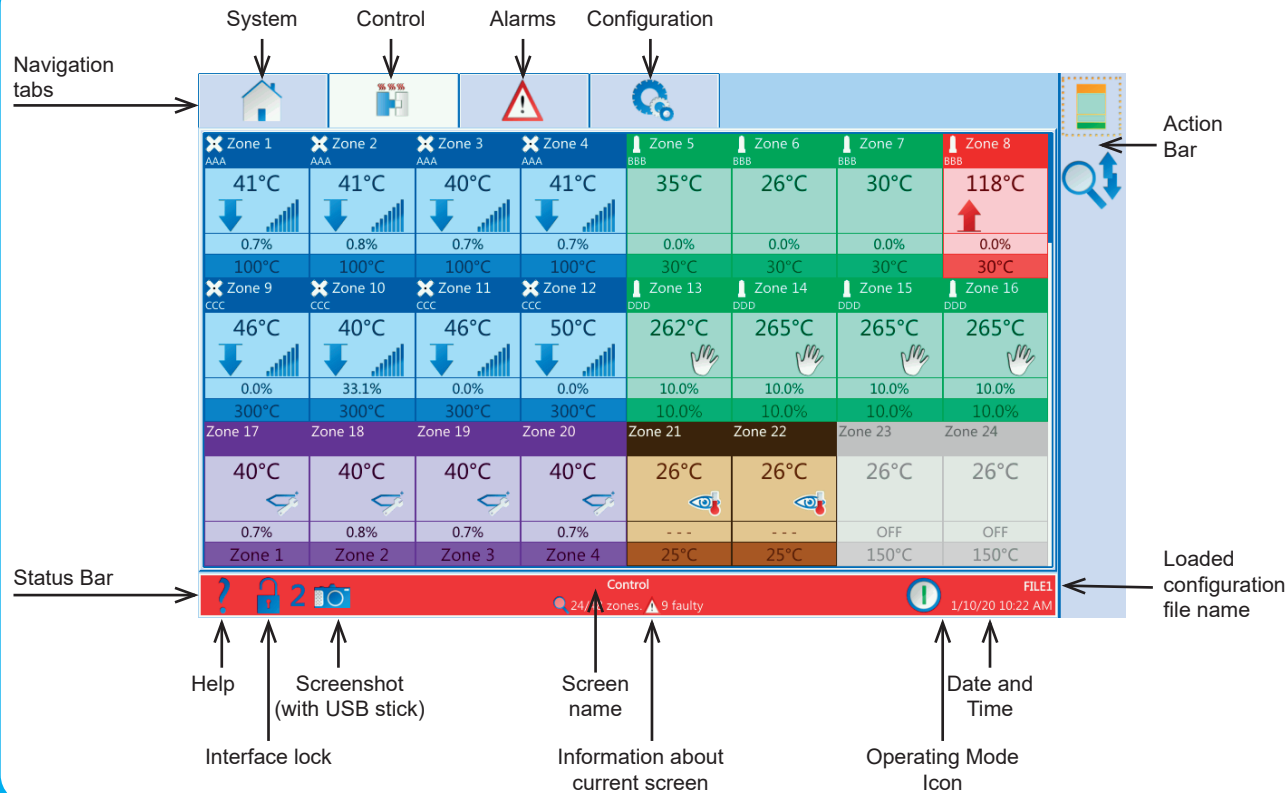
4 SWITCH TO STANDBY OR PRODUCTION MODE





Any interaction inside the controller must be performed by duly authorized personnel after powering off the controller. Any connection between the controller and the mould must be carried out in POWER OFF status.

INTERFACE



MAIN ALARMS

Icon	Description
	Low Temperature Alarm
	High Temperature Alarm
	Cut Thermocouple
	Reversed Thermocouple
	Load Failure
	Power monitoring has detected a value that differs from the reference value
	Faulty Triac
	Current monitoring has detected a value that differs from the reference value
	A phase is missing on the Power Card

ZONE COLOUR CODING

