

Appendix D:
Revised Teutonia Project Wind Impacts



600 Southgate Drive
Guelph ON Canada
N1G 4P6

Tel: +1.519.823.1311
Fax: +1.519.823.1316

May 26, 2022

Peter Feroe, AICP
Senior Technical Director / Planning
AKRF, Inc.

**Re: Pedestrian Wind Study
AMS Yonkers Downtown Development - Teutonia
RWDI Reference No. 2102437**

Dear Peter,

RWDI was retained to conduct a pedestrian wind study of the proposed AMS Yonkers Downtown Development - Teutonia in Yonkers, NY. A report summarizing the results was issued on August 12, 2021. For the detailed background and approach of the study, please refer to the August 2021 report.

The model used in the August 2021 study had openings throughout the west and east façades of the parking garage, as shown in Image 1. It is understood that there is a consideration to close the openings on the west façade up to a height of 40' above the adjacent railway tracks. In RWDI's opinion, if the proposed design change materializes, the overall impact on wind flows around the building is not anticipated to be significant and as such, the conclusions and recommendations presented in the August 2021 report are still valid. This is because the magnitude of the crossflow in the garage through the openings up to a height of 40' is relatively insignificant compared to the wind flow around the development as a whole.

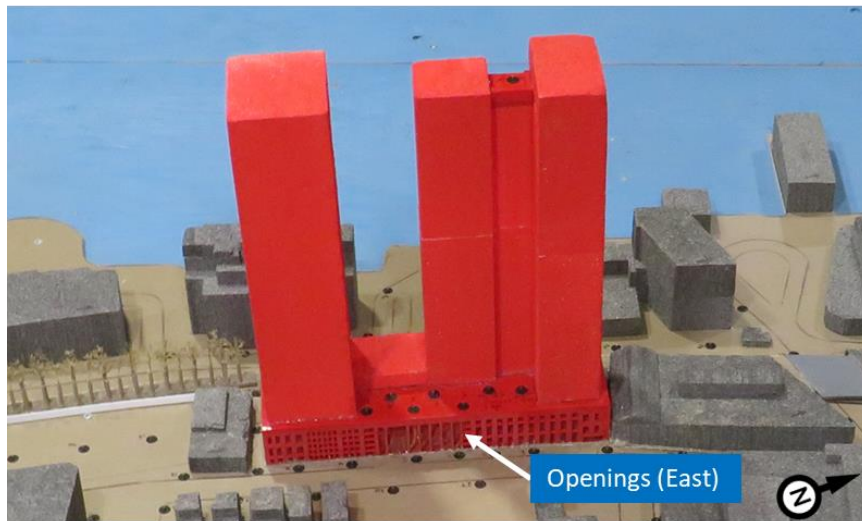
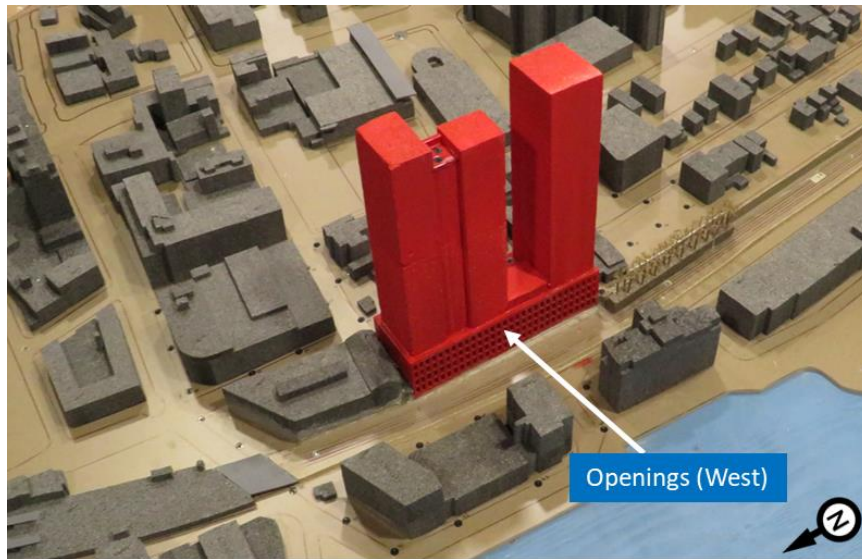


Image 1: Openings in the Parking Garage of the Proposed Development

We trust that the above assessment satisfies the design team’s requirements at this time. Should you have any questions or require additional information, please do not hesitate to contact us.

Respectfully submitted by,

Sreeyuth Lal, Ph.D.
Technical Coordinator, RWDI