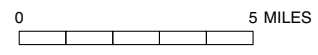
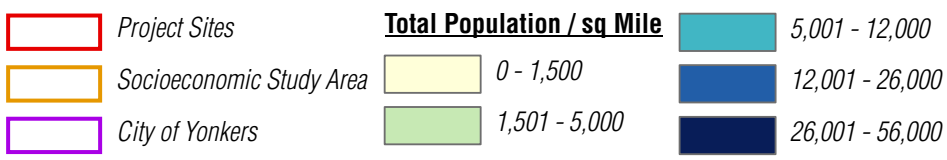
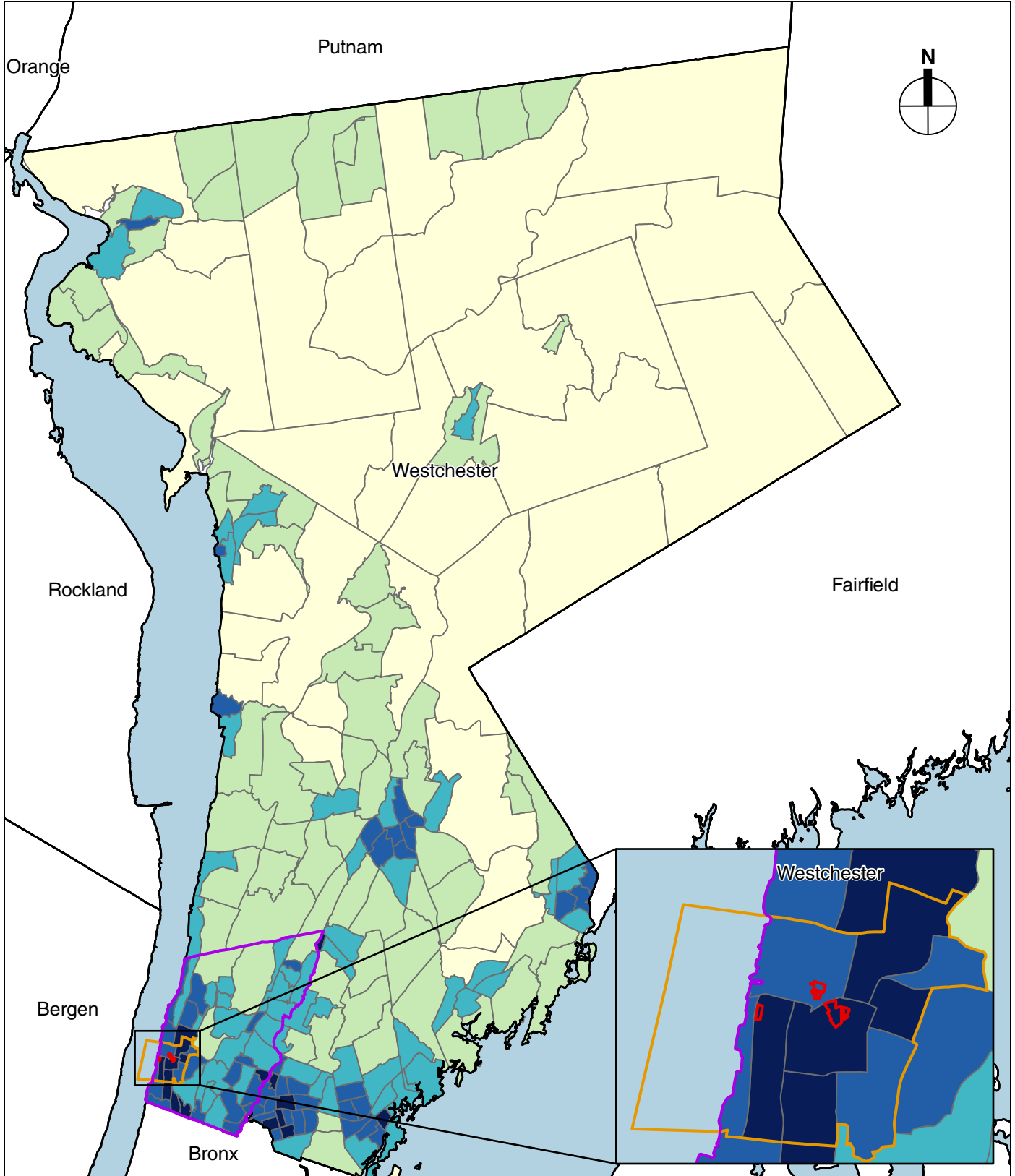


- Project Sites
- Socioeconomic Study Area
- Census Tract

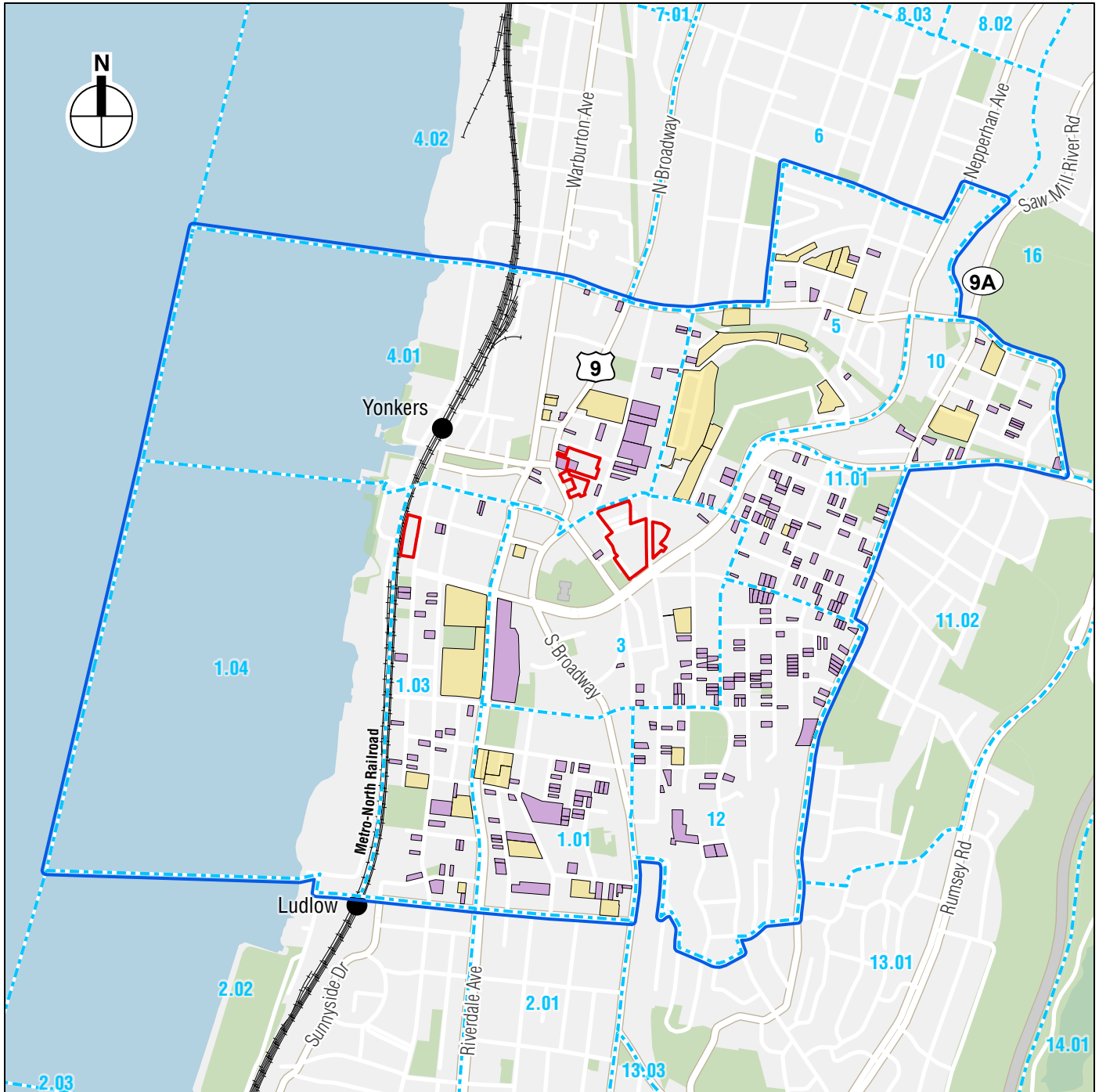
Socioeconomic Study Area  
**Figure 6-1**

8.25.21

Data source: U.S. Census Bureau, American Community Survey 5-Year Estimates, 2015-2019



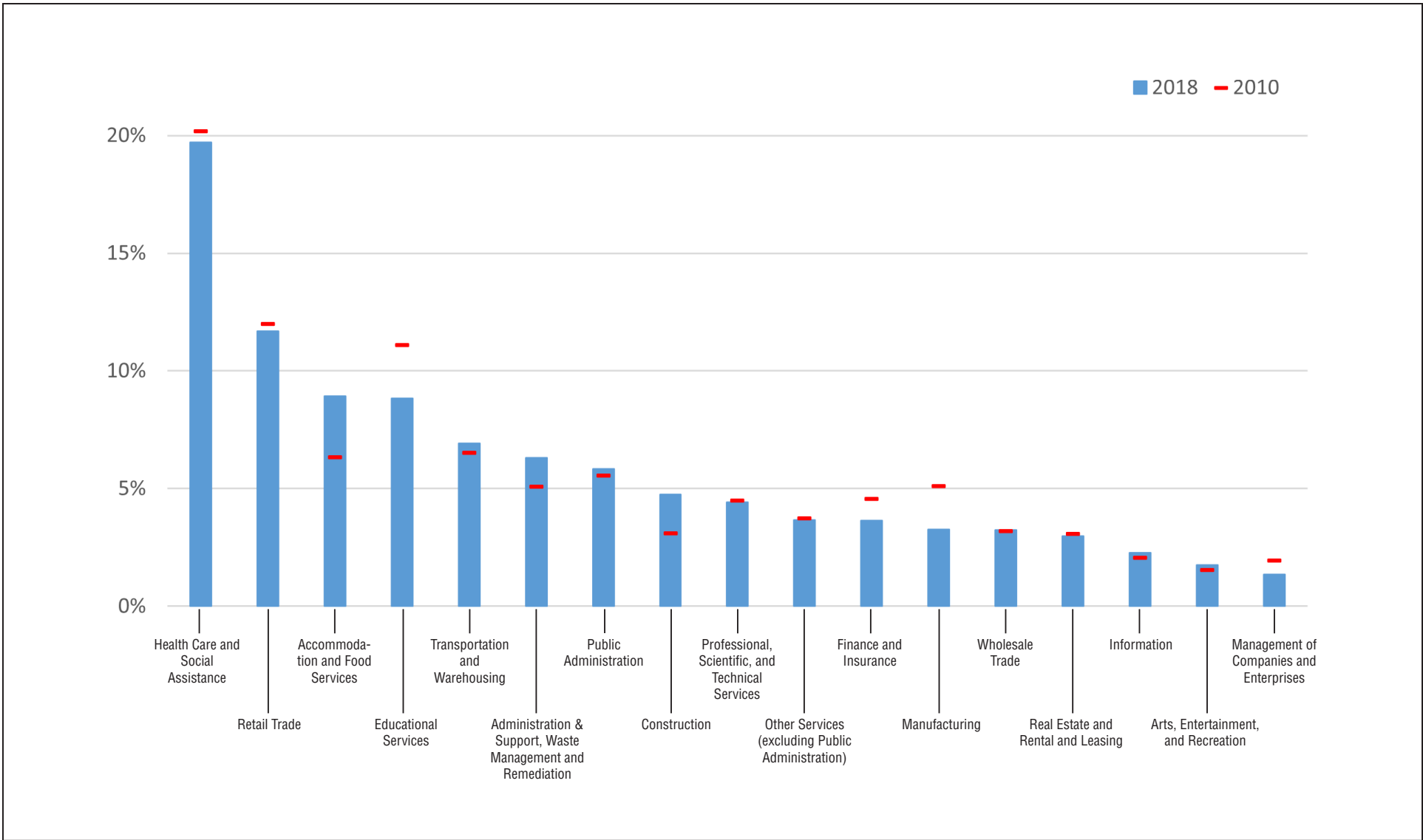


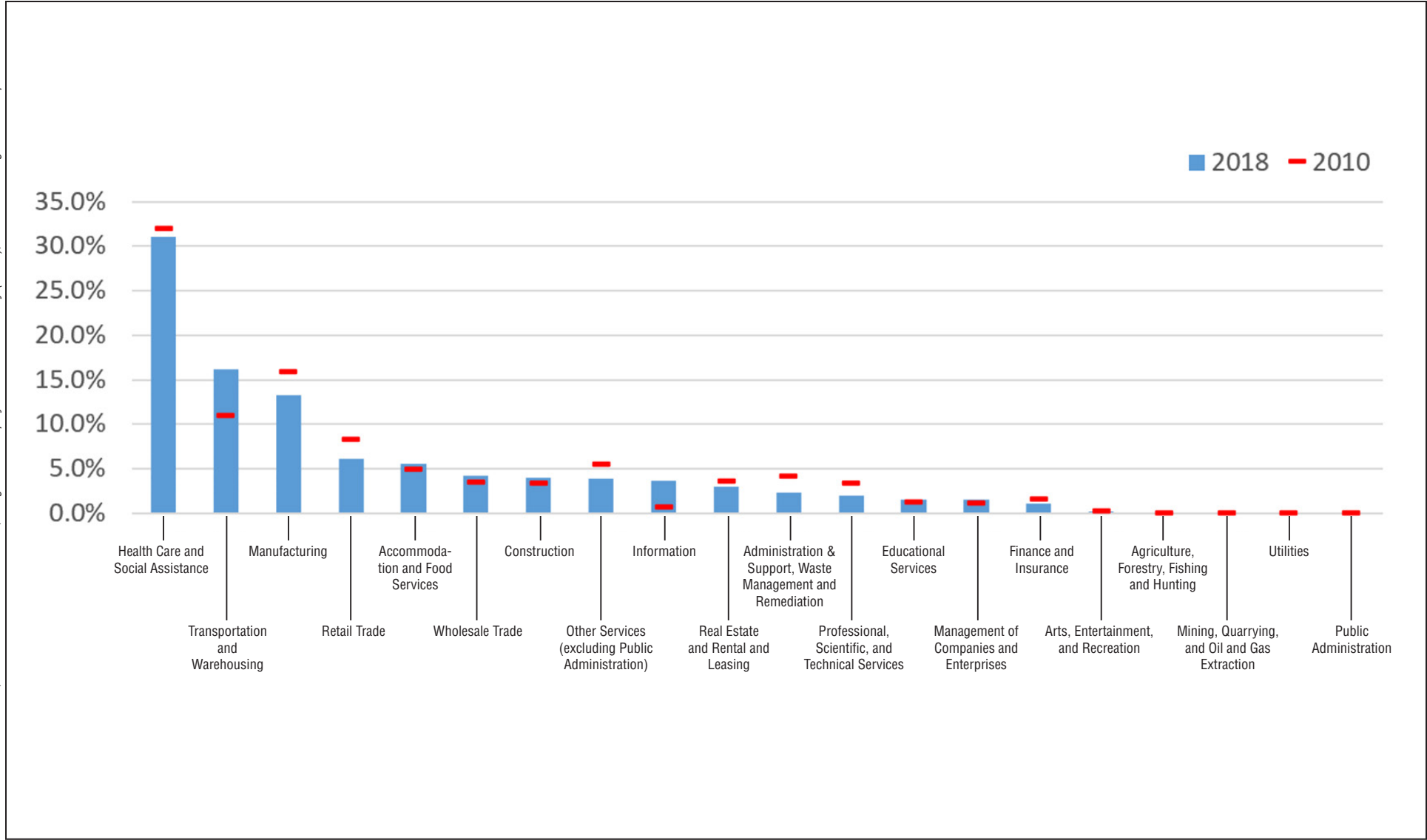


- Project Sites
- Socioeconomic Study Area
- Census Tract
- Emergency Tenant Protection Act (ETPA)
- Other Protected Rental Units

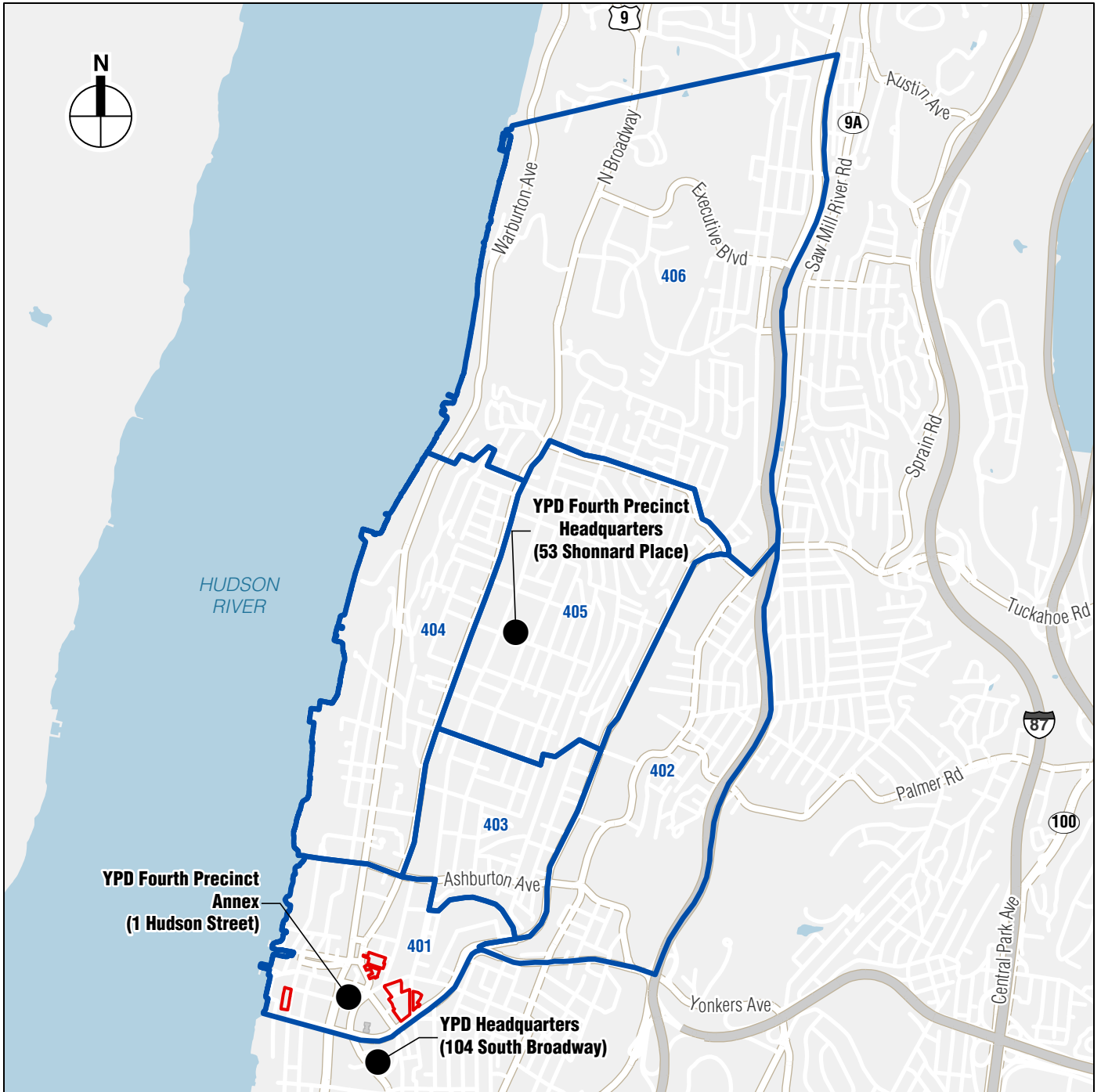
0 2,000 FEET





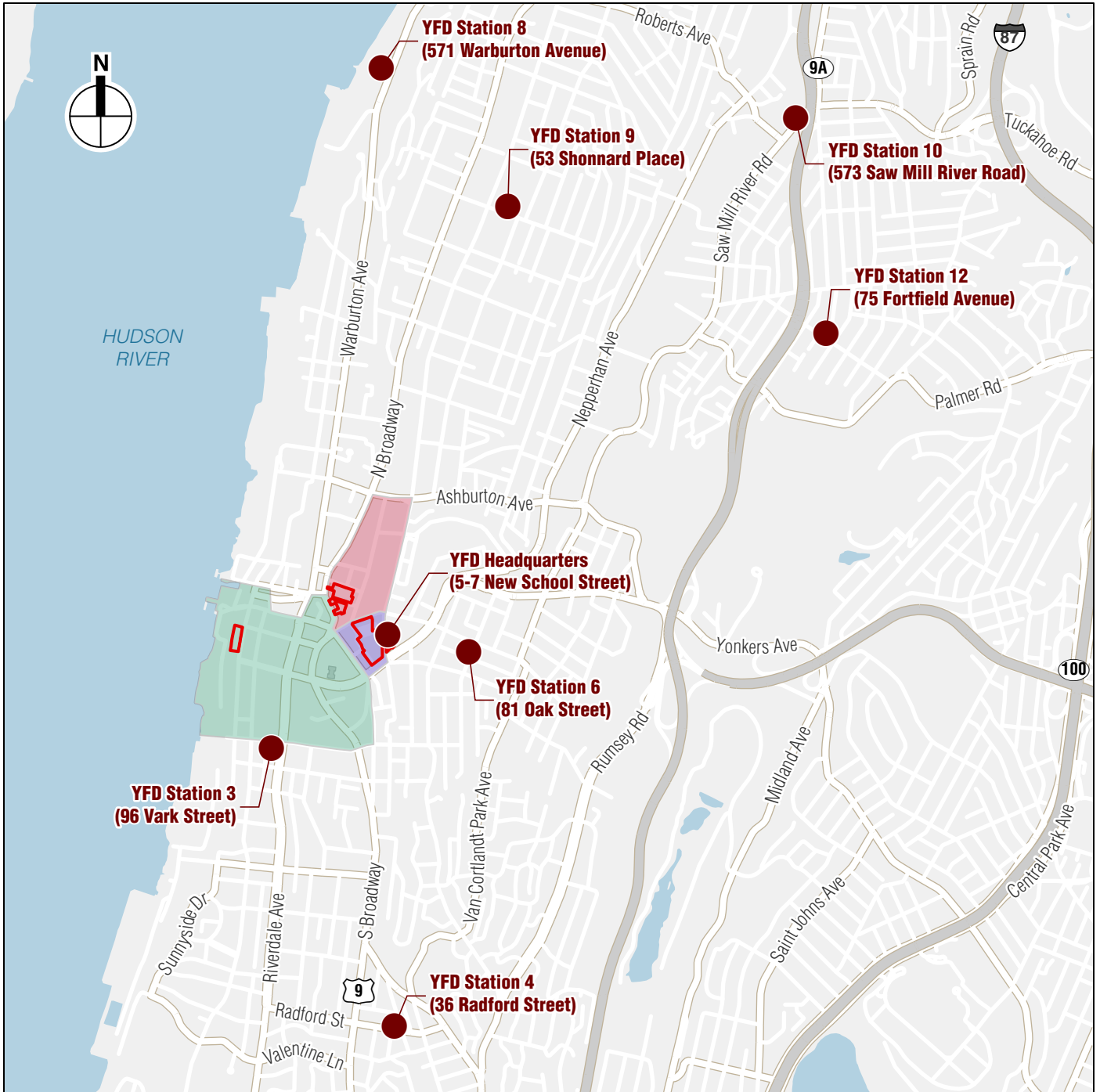


Private Sector Primary Jobs within the Study Area, 2010 and 2018



 Project Sites

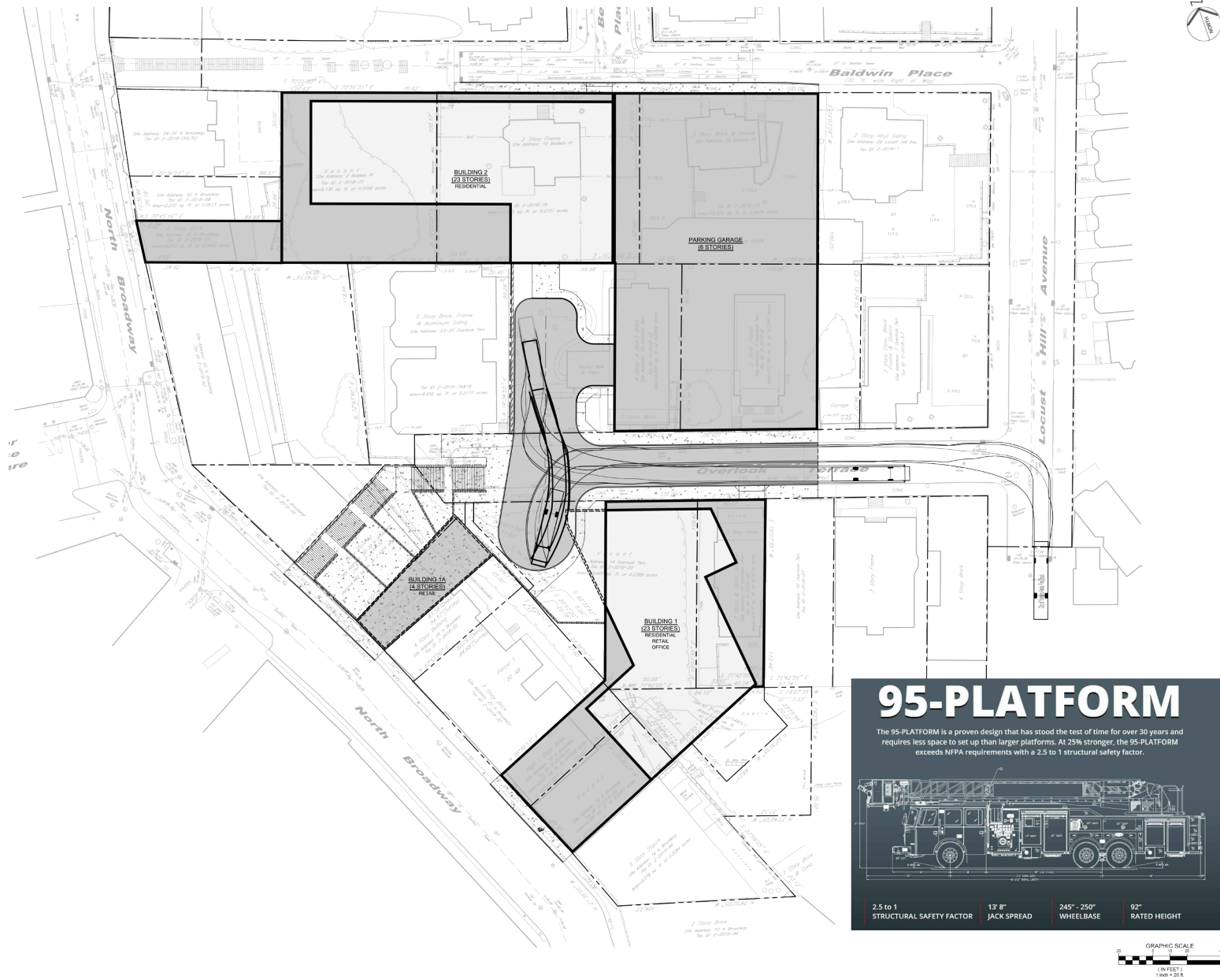
 Yonkers Police Department (YPD) Fourth Precinct Sector



Project Sites

**Yonkers Fire District (YFD) Fire Response Area**

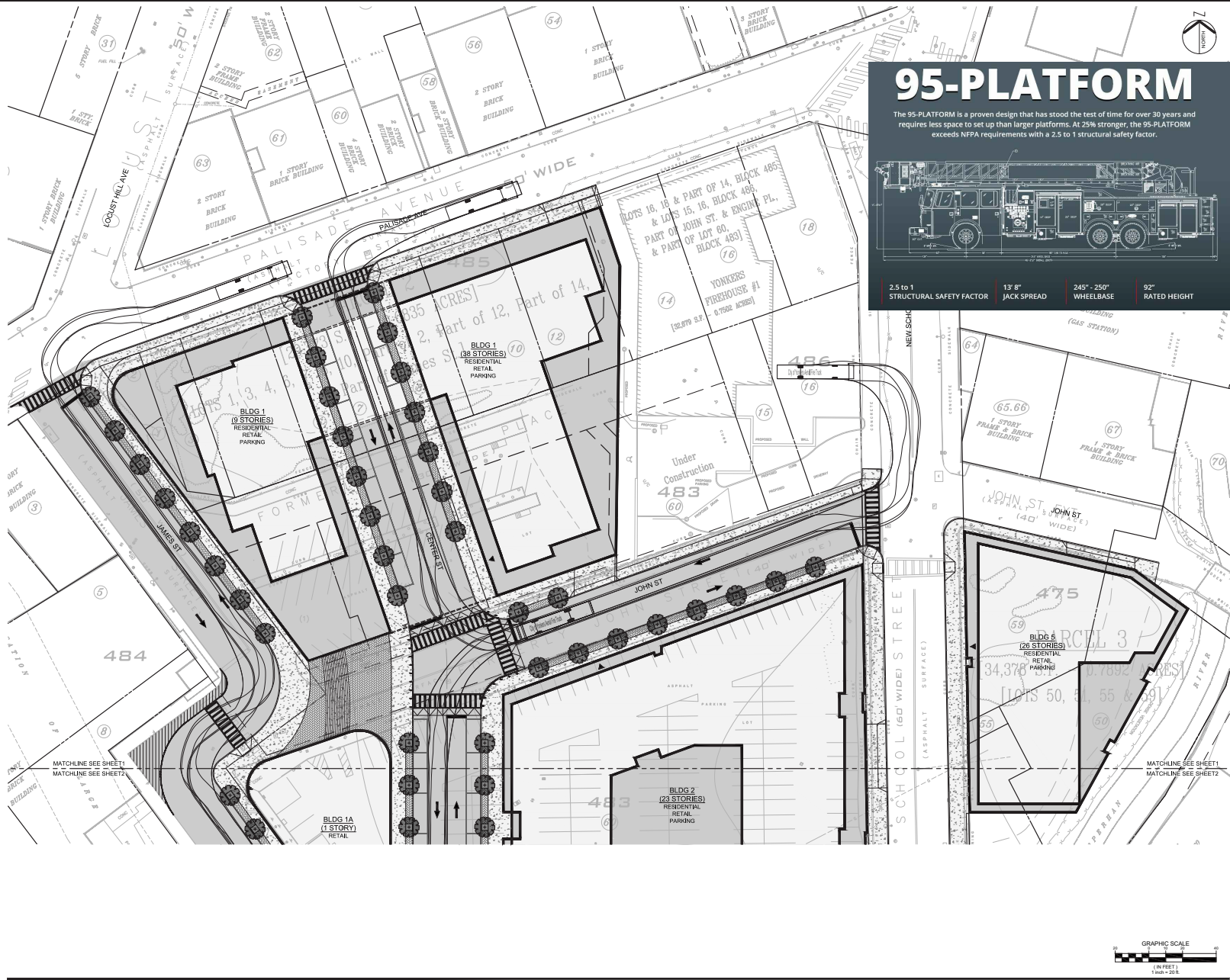
- 3B
- 3C
- 3G



North Broadway - Fire Truck Maneuvering Plans  
Figure 7-3



Source: PAULUS, SOKOLOWSKI AND SARTOR ENGINEERING, P.C.



## 95-PLATFORM

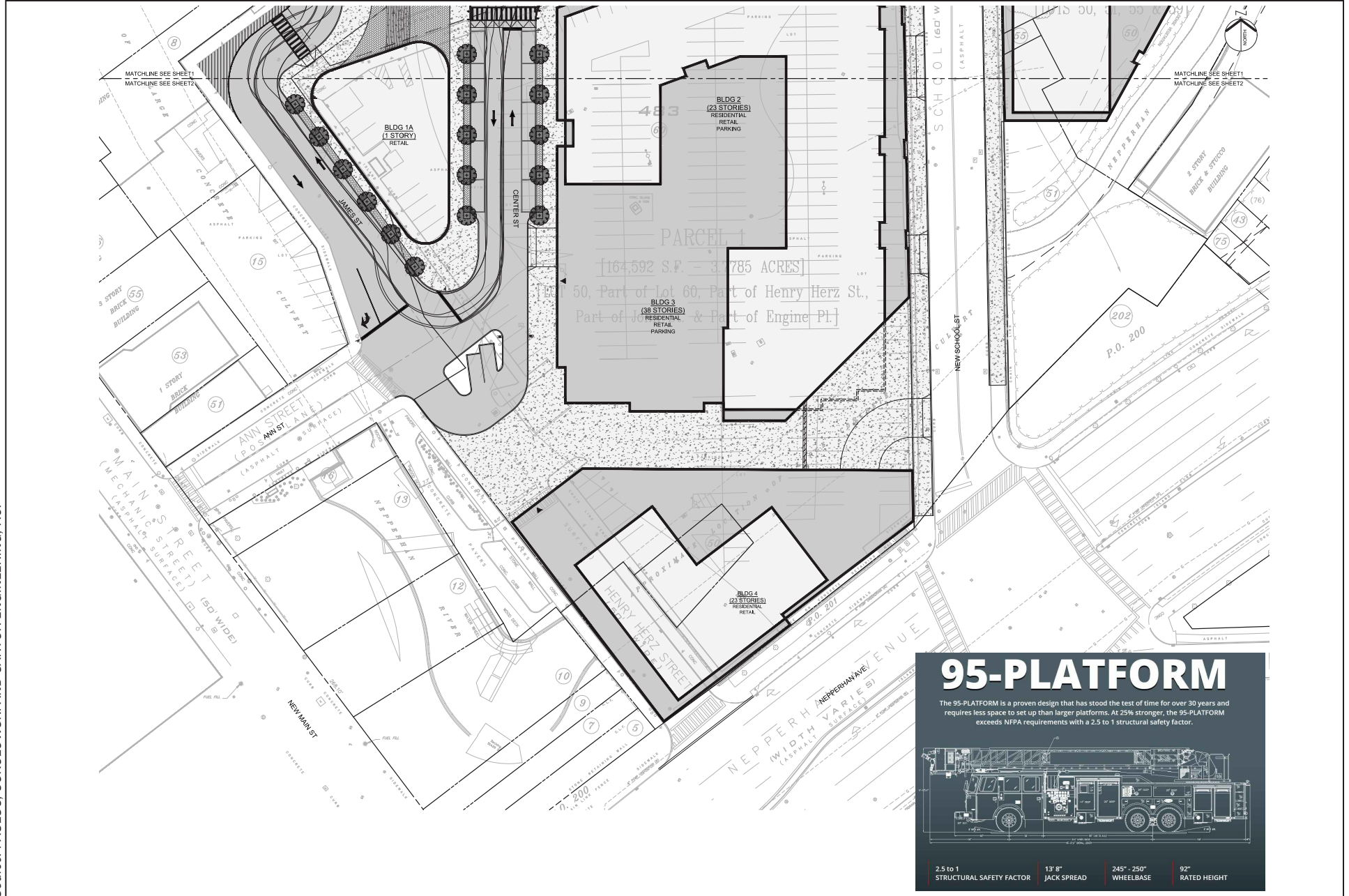
The 95-PLATFORM is a proven design that has stood the test of time for over 30 years and requires less space to set up than larger platforms. At 25% stronger, the 95-PLATFORM exceeds NFPA requirements with a 2.5 to 1 structural safety factor.

2.5 to 1 STRUCTURAL SAFETY FACTOR	13' 8" JACK SPREAD	245" - 250" WHEELBASE	92" RATED HEIGHT
--------------------------------------	-----------------------	--------------------------	---------------------

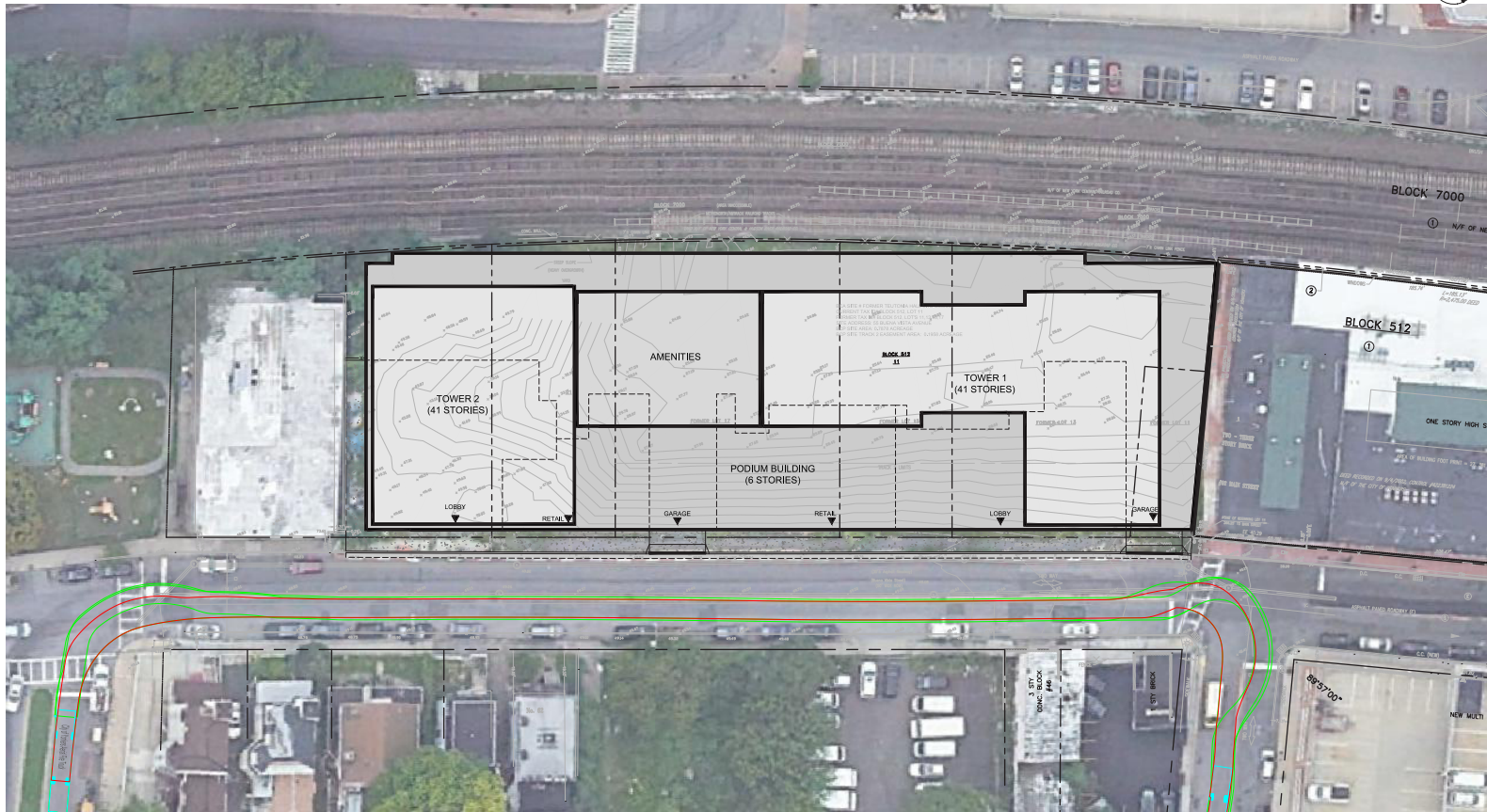
Chicken Island - Fire Truck Maneuvering Plans  
Figure 7-4a



Source: PAULUS, SOKOLOWSKI AND SARTOR ENGINEERING, P.C.

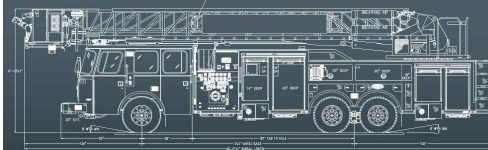


Chicken Island - Fire Truck Maneuvering Plans  
Figure 7-4b



# 95-PLATFORM

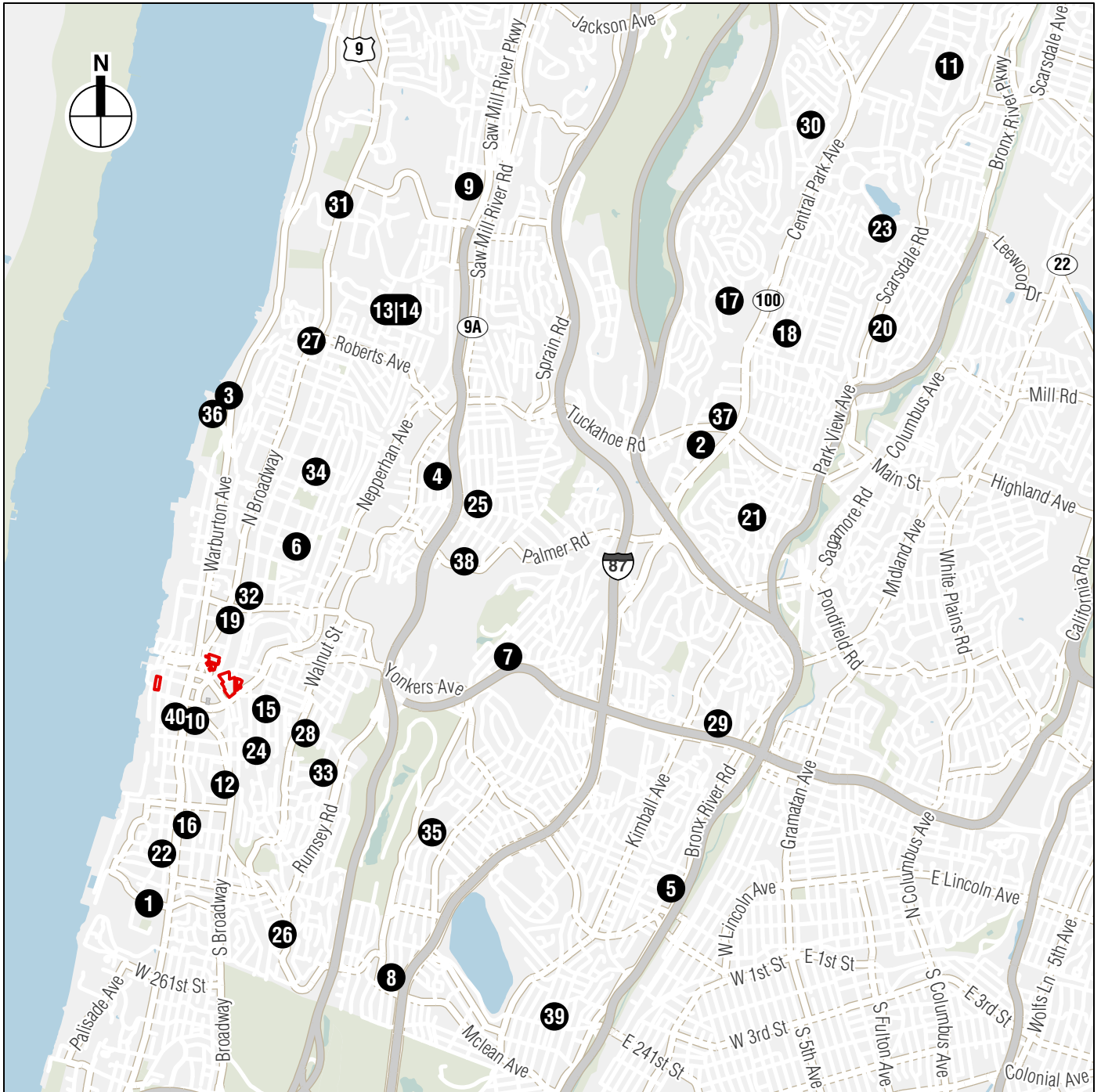
The 95-PLATFORM is a proven design that has stood the test of time for over 30 years and requires less space to set up than larger platforms. At 25% stronger, the 95-PLATFORM exceeds NFPA requirements with a 2.5 to 1 structural safety factor.



2.5 to 1 STRUCTURAL SAFETY FACTOR	13' 8" JACK SPREAD	245" - 250" WHEELBASE	92" RATED HEIGHT
--------------------------------------	-----------------------	--------------------------	---------------------

Teutonia - Fire Truck Maneuvering Plans  
Figure 7-5

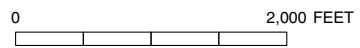
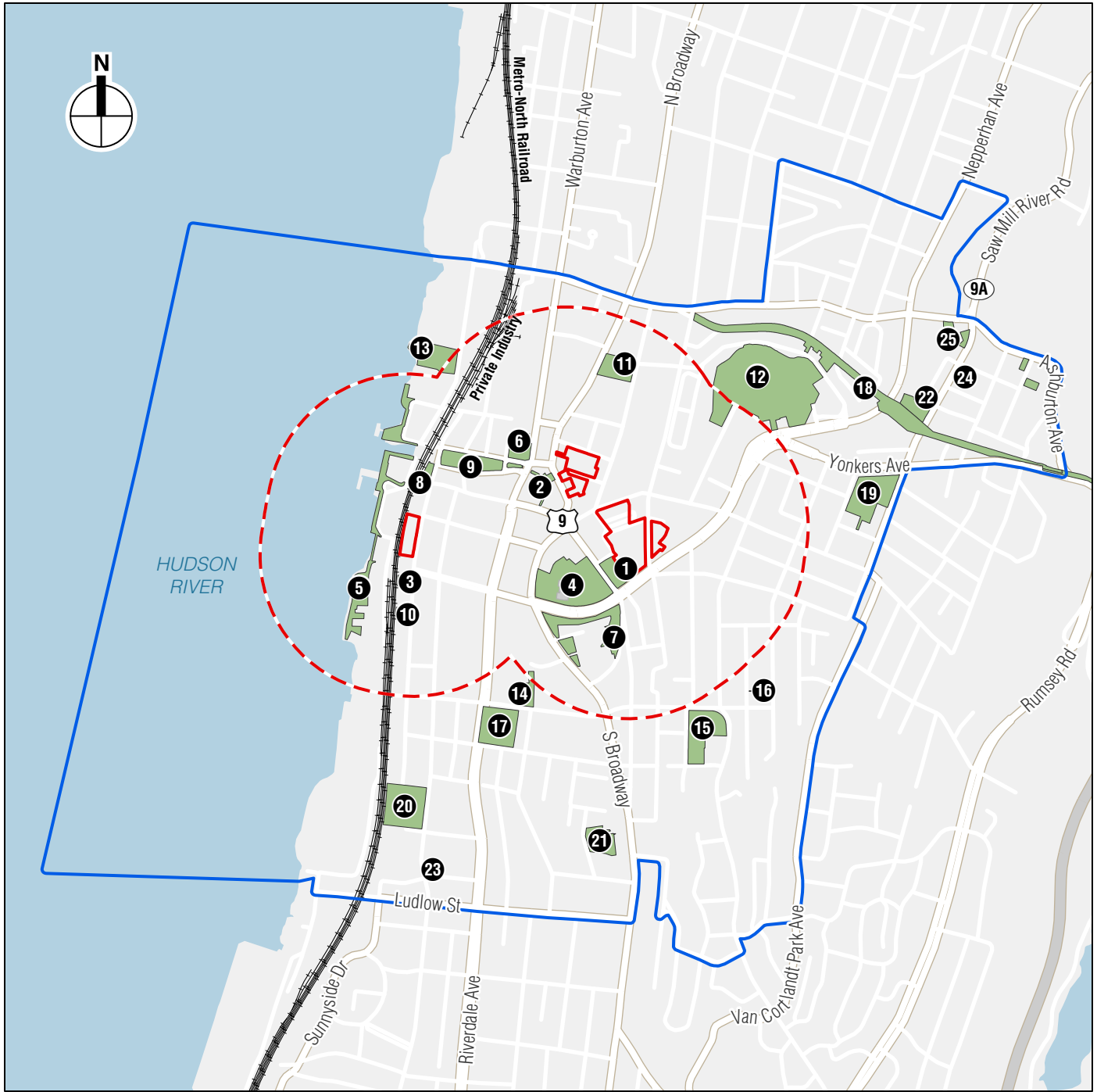




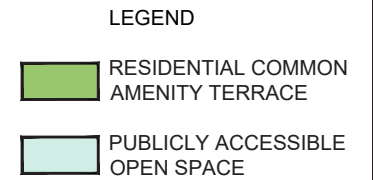
 Project Sites

 Public School Location and Reference Number

0 2 MILES



- Project Sites
- Quarter-Mile from Project Sites
- Socioeconomic Study Area
- 1 Open Space Resource



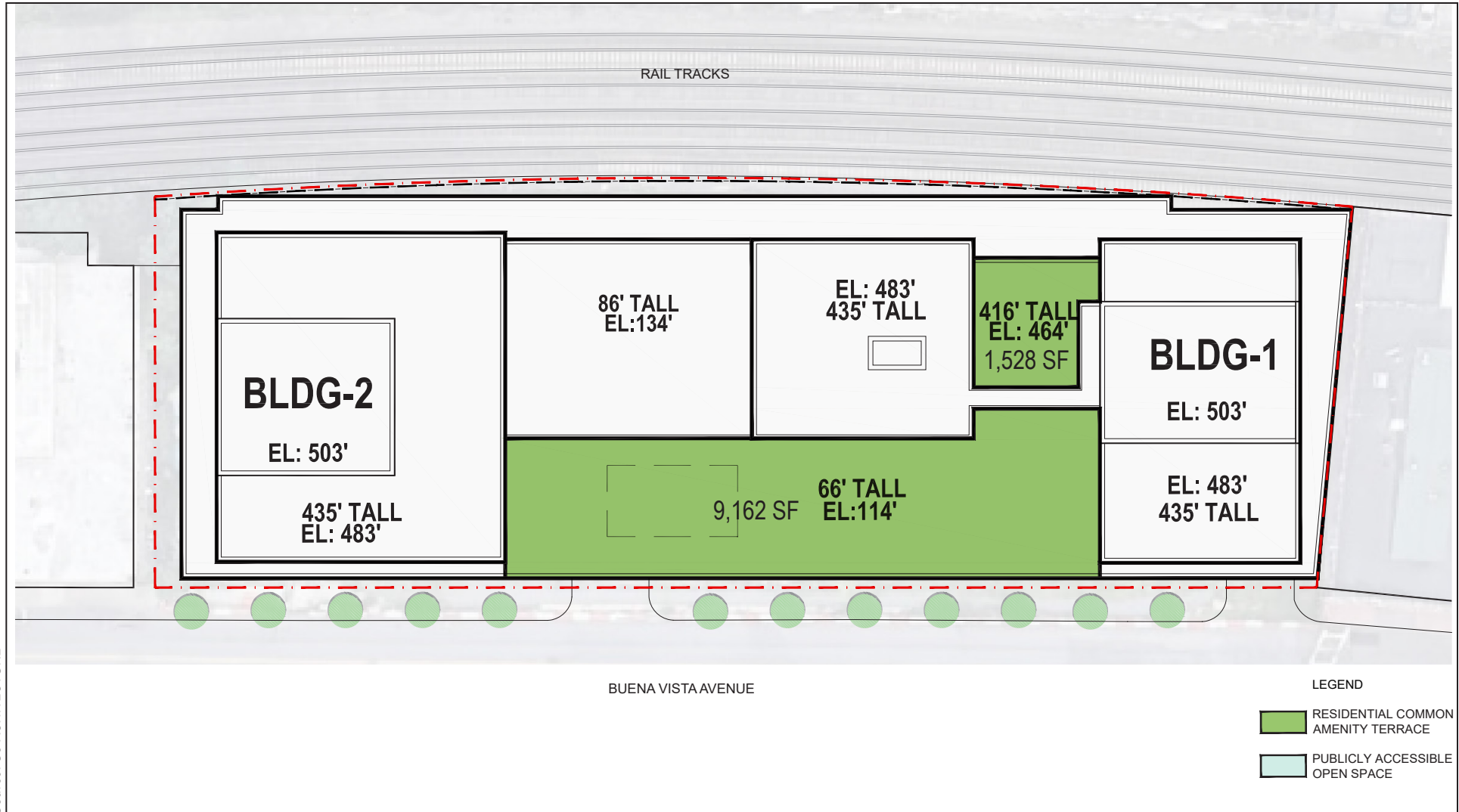




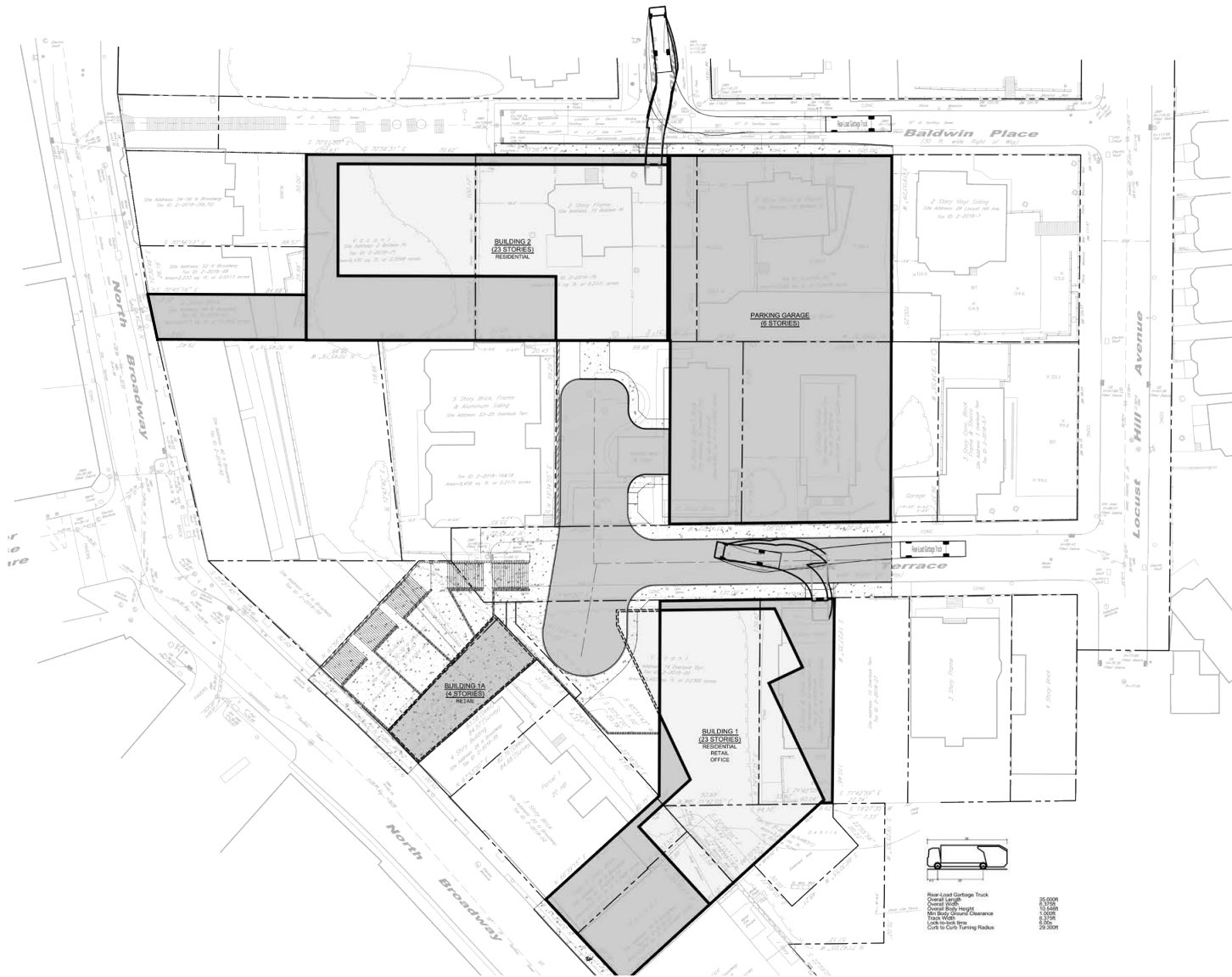
LEGEND

- RESIDENTIAL COMMON AMENITY TERRACE
- PUBLICLY ACCESSIBLE OPEN SPACE





Source: S9 ARCHITECTURE

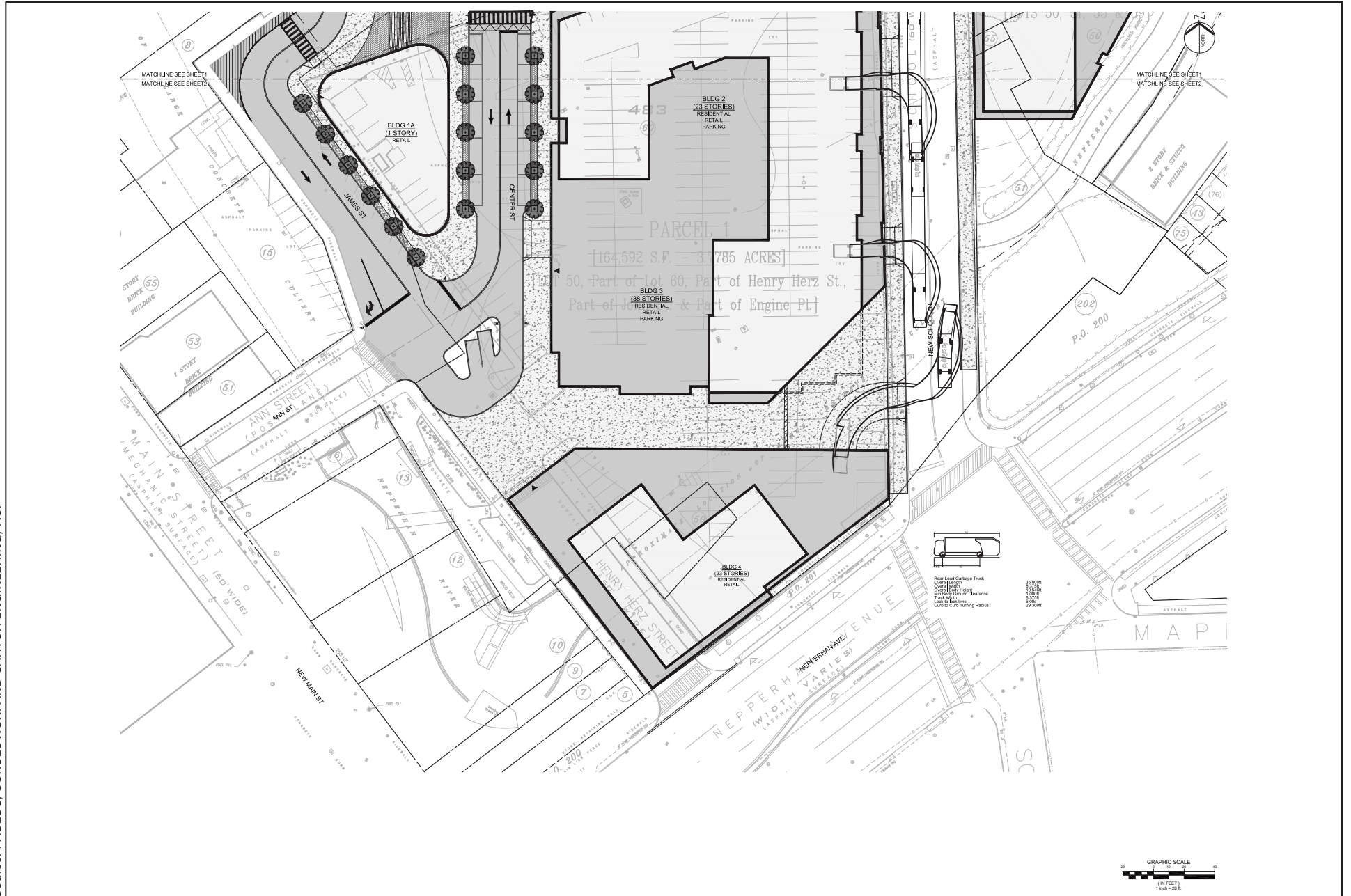


Blank Load Garbage Truck	35,000#
Overall Length	63,750"
Overall Width	11,000"
Overall Body Height	12,000"
Max Body Ground Clearance	6,375"
Truck Wheel	6,300"
Load Capacity	1,500
Curb to Curb Turning Radius	29,300"



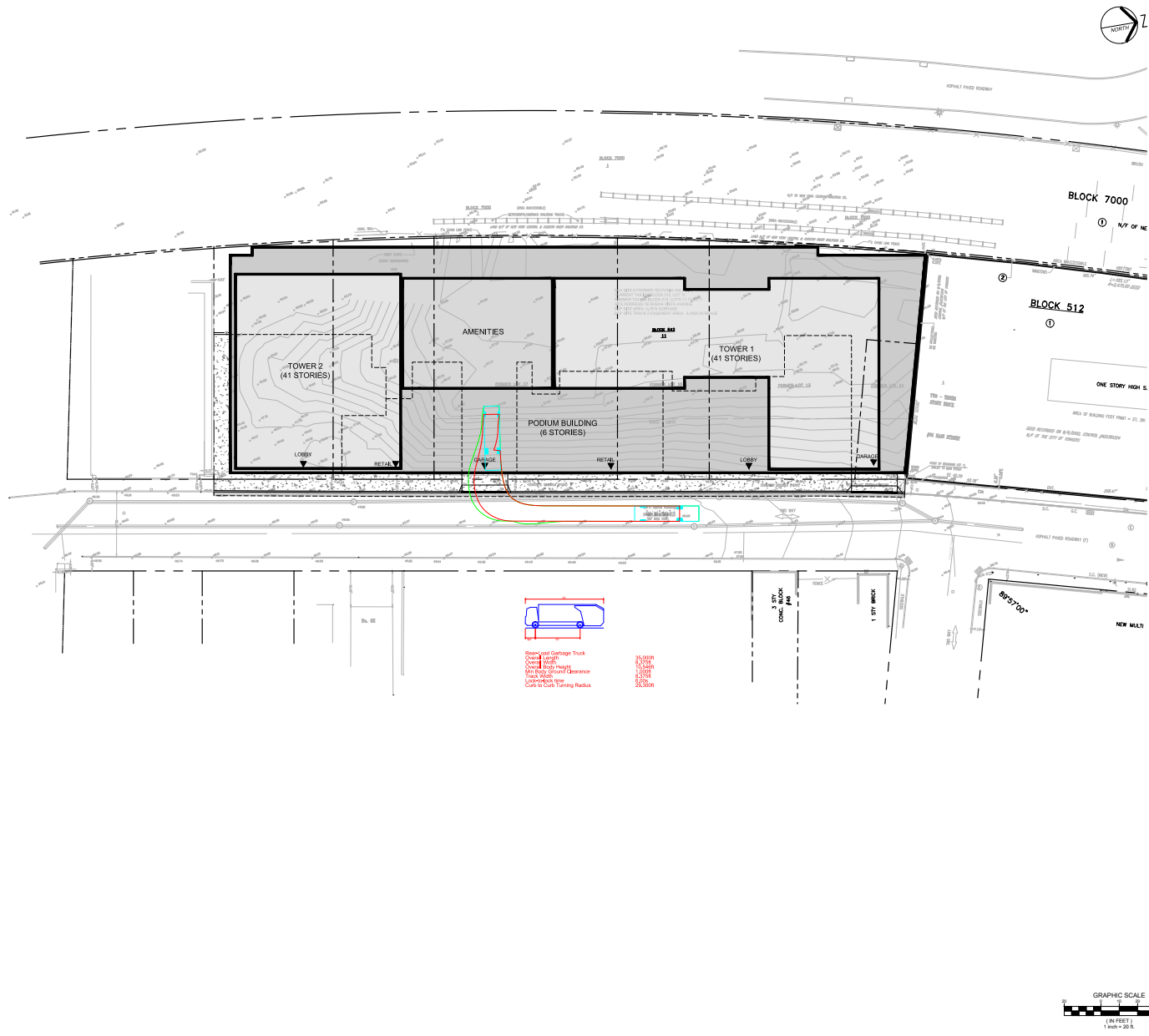
North Broadway - Sanitation Truck Maneuvering Plans  
**Figure 7-11**



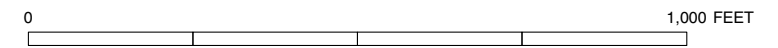
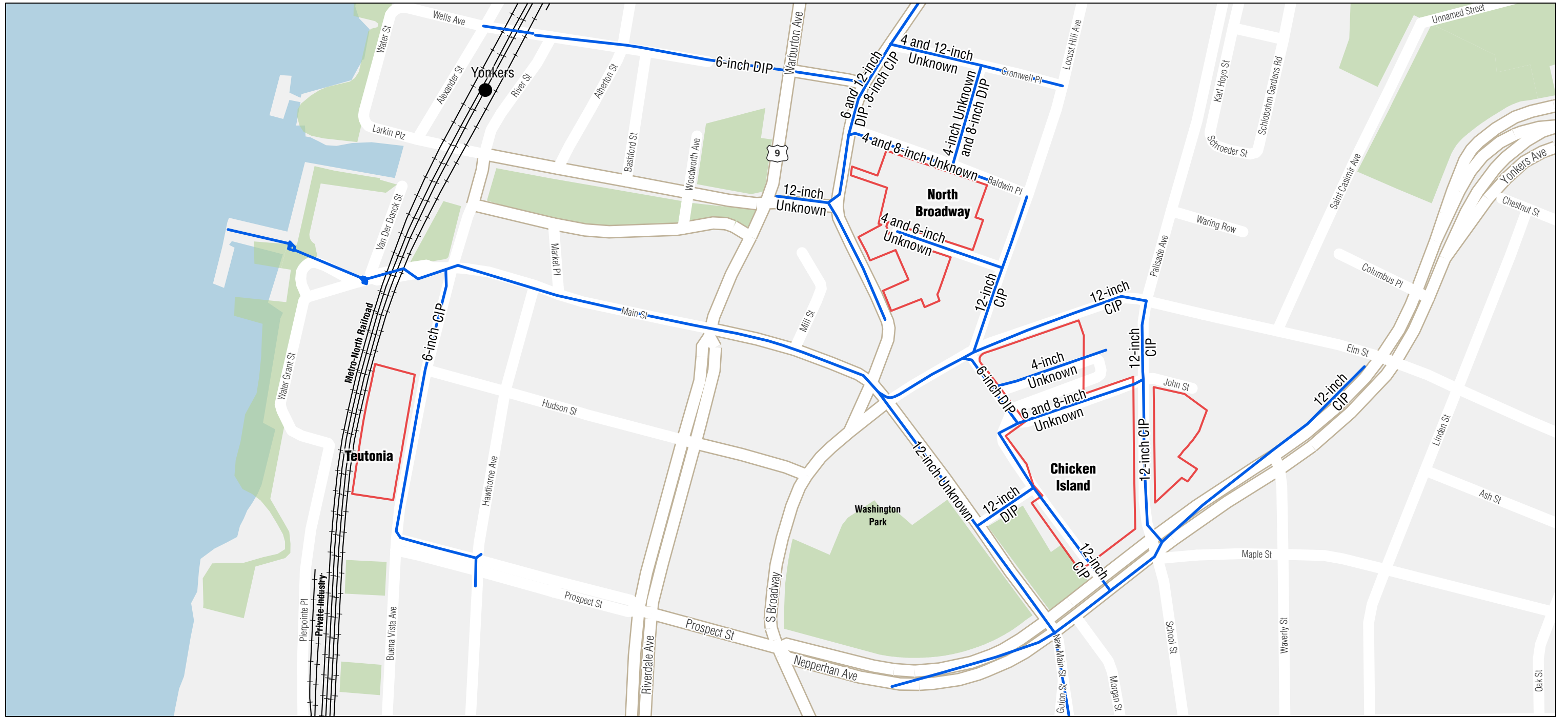


Chicken Island - Sanitation Truck Maneuvering Plans  
Figure 7-12b





Teutonia - Sanitation Truck Maneuvering Plans  
Figure 7-13

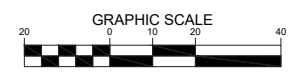
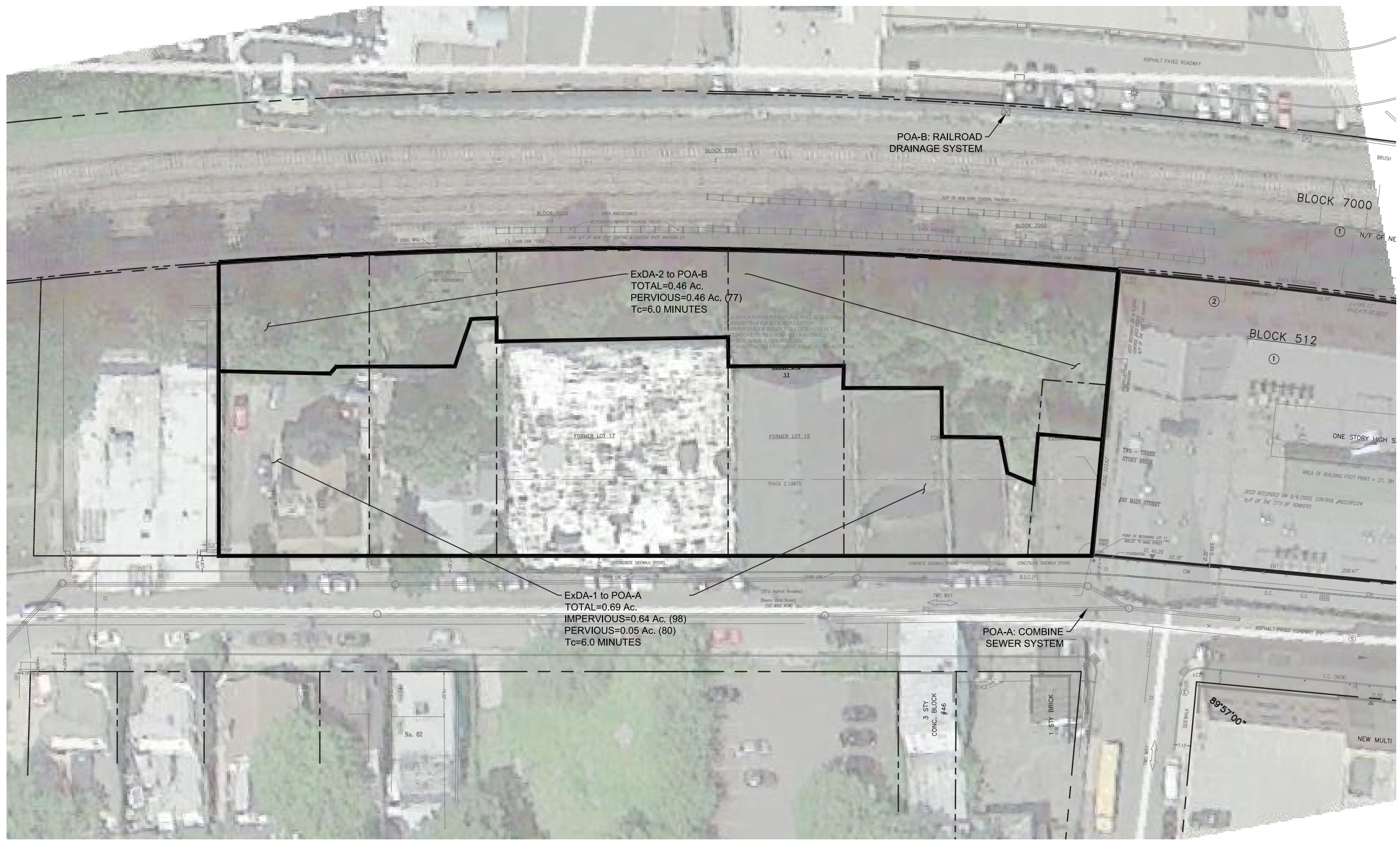


- Project Sites
- Water Supply Infrastructure

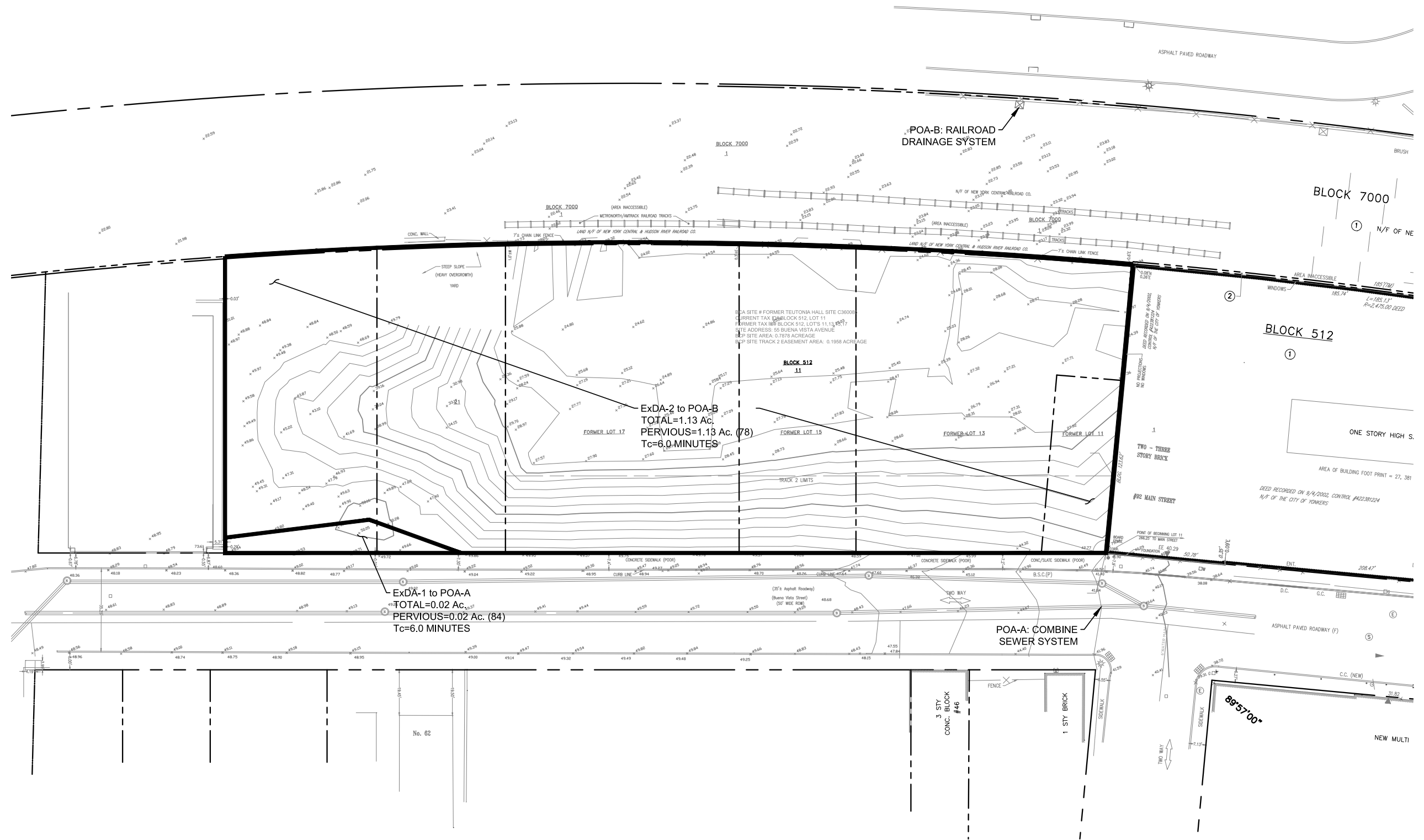
Note:  
 CIP = Cast Iron Pipe  
 DIP = Ductile Iron Pipe





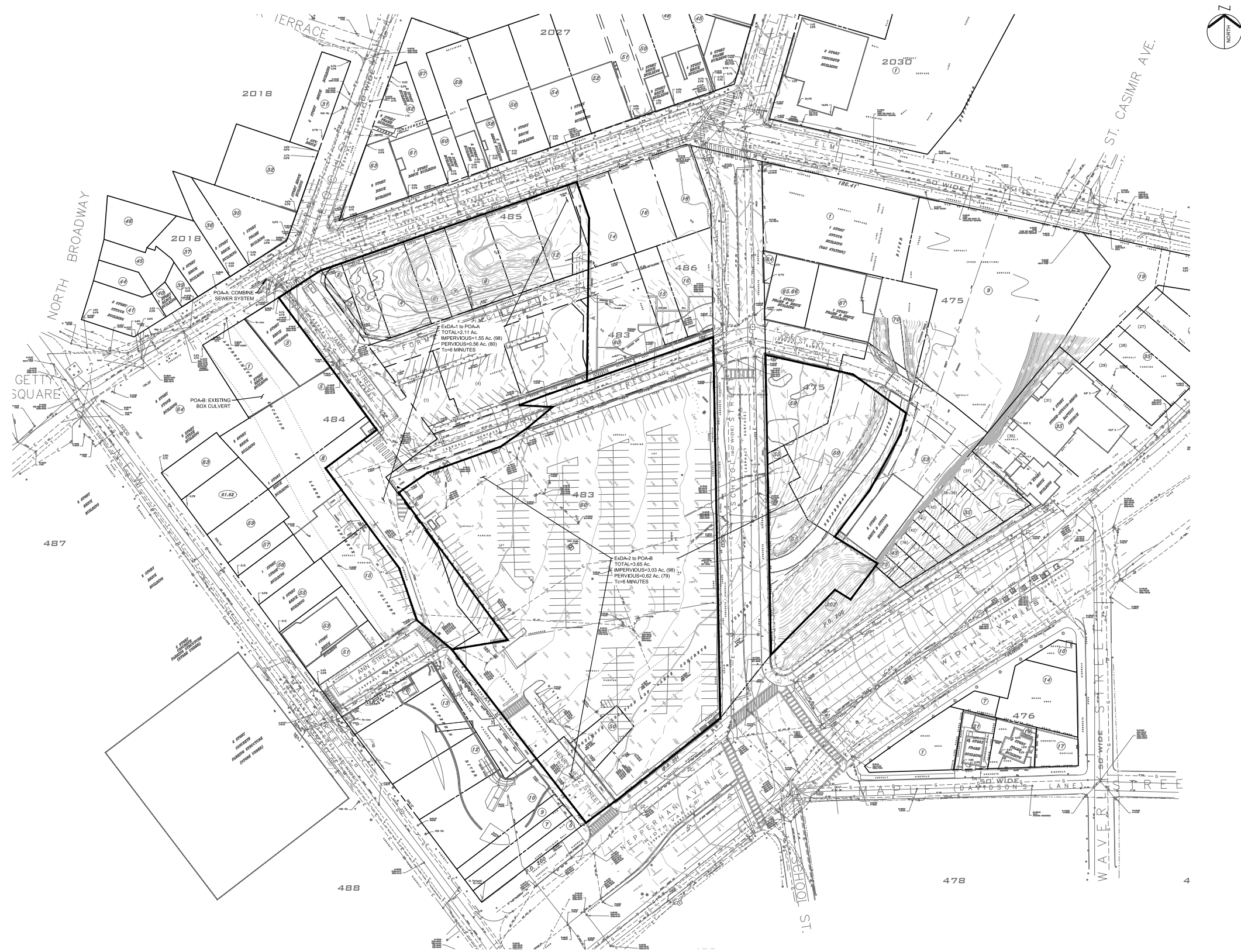


Teutonia Site Pre-Development (2013)  
 Drainage Area Map  
 Figure 9-1



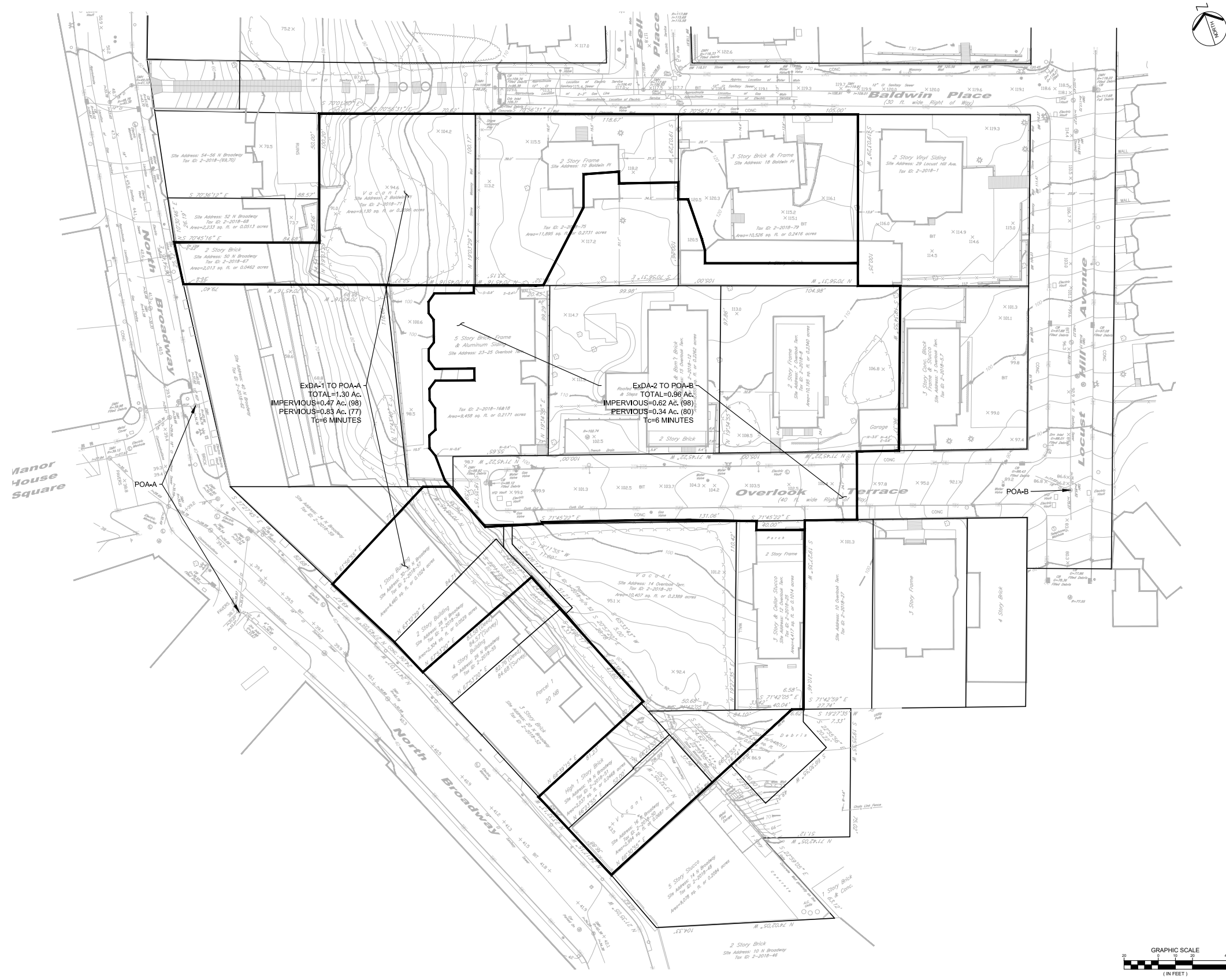
Teutonia Site Pre-Development (2021)  
 Drainage Area Map  
 Figure 9-2





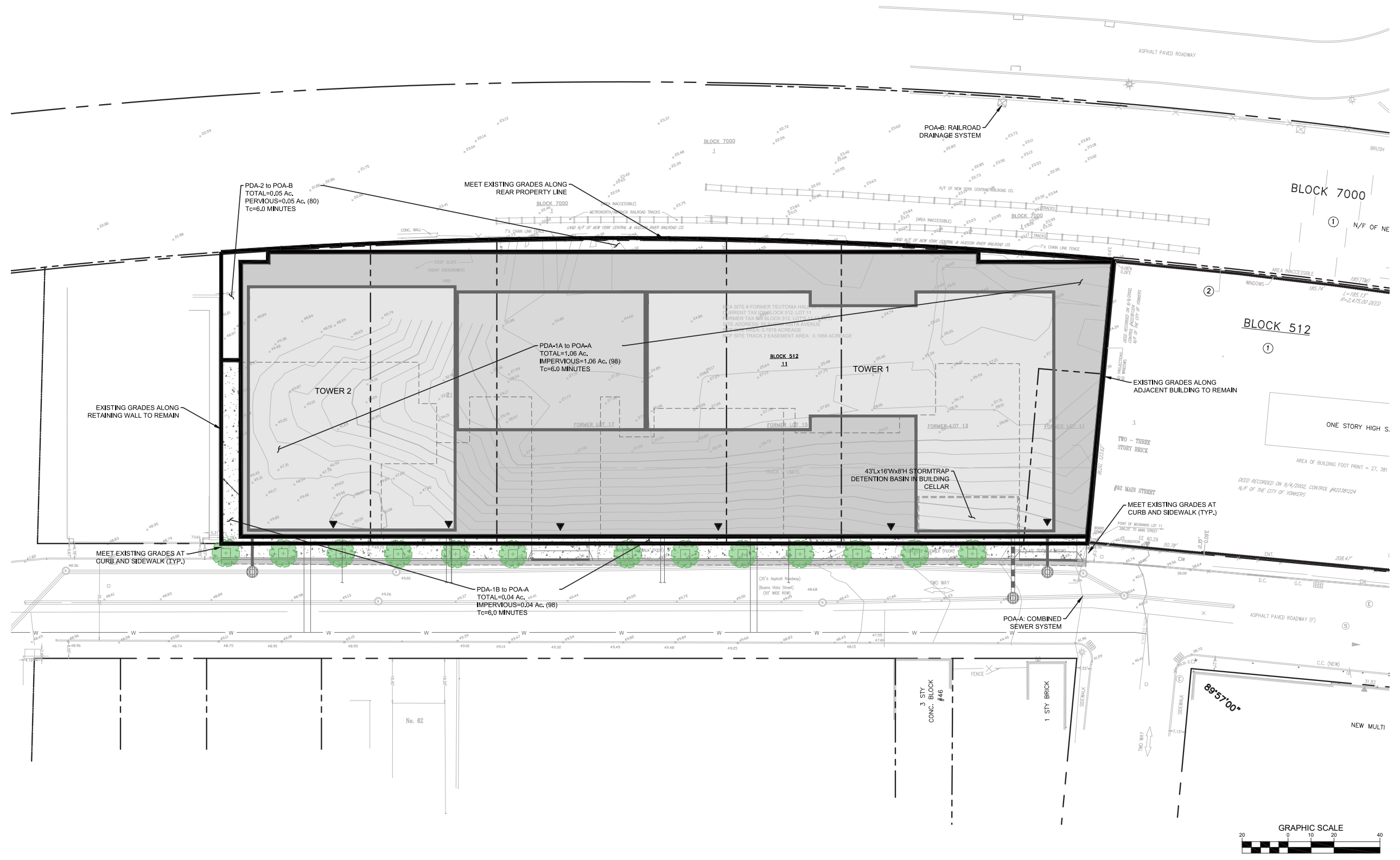
Chicken Island Site Pre-Development Drainage Area Map

Figure 9-3



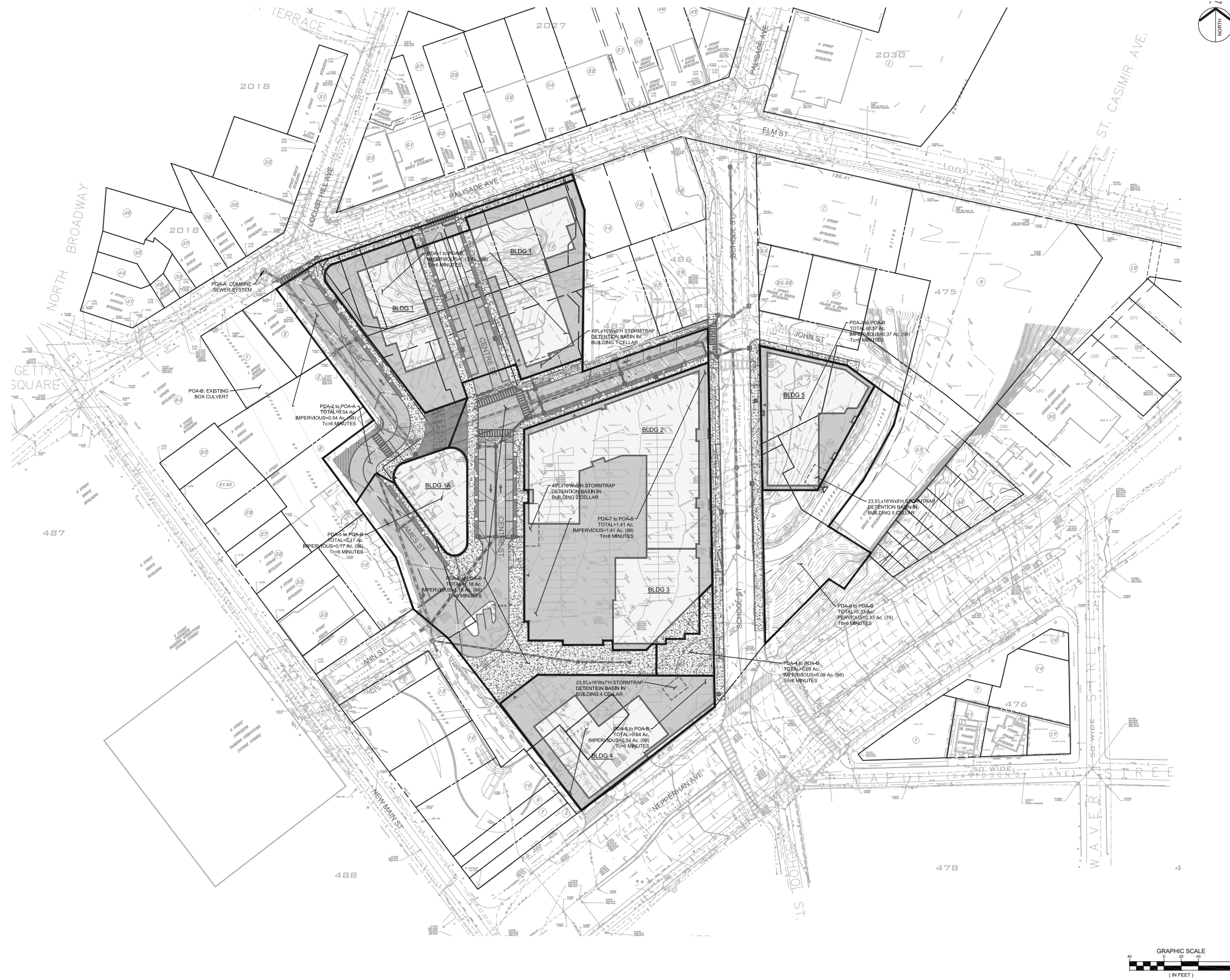
North Broadway Site Pre-Development Drainage Area Map  
Figure 9-4





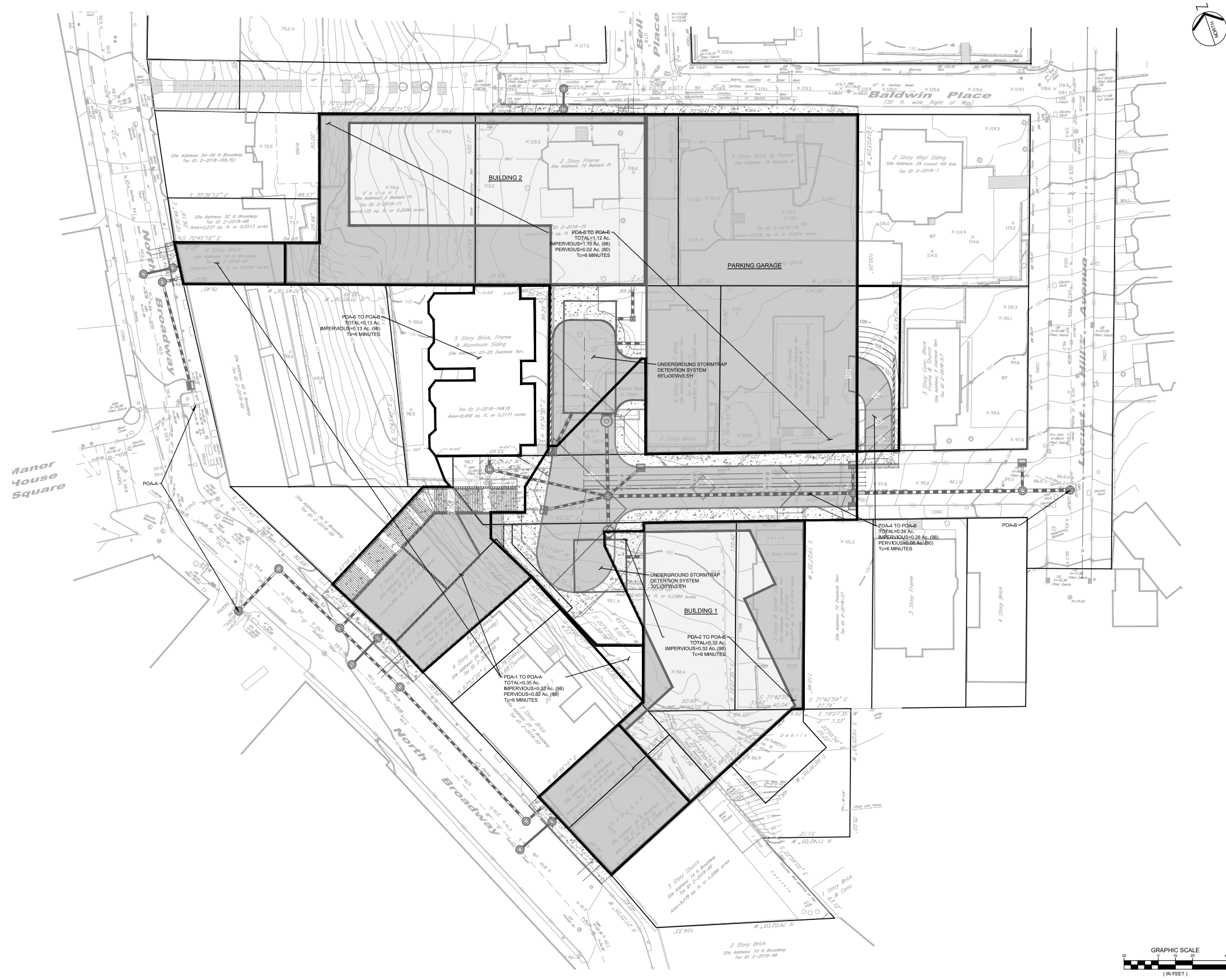
Teutonia Site Post-Development  
 Drainage Area Map  
 Figure 9-5





Chicken Island Site Post-Development  
 Drainage Area Map  
 Figure 9-6





North Broadway Site Post-Development  
 Drainage Area Map  
**Figure 9-7**