

Spice Your Home Up

COFFEE TABLES & POUFS



DOĞTAŞ®

2023 COLLECTION



Free spirited peripherals: Coffee Tables+Poufs

As some of the most functional household items, coffee tables add value to the style and enrich the atmosphere like all textures used in the space.

SELECTION

Coffee tables are pieces directly connected with other furniture in the room. Thus, it is important they are functional. The key point here is to set the correct size, shape and colour balance. The shape of round coffee and side table set makes them functional for any type of setting. Round models are a safe choice for homes with kids as well. It is a classical choice to create a combination with side tables or nesting tables. Such a set looks better in a large living room with big sofas. Small coffee table sets can be a functional solution to fill the space in open-plan living spaces. Coffee table sets also offer functionality to spaces when the household consists of many members. Small and light options placed on the sofa ends offer practical use.

USAGE

A correctly set centre coffee table adds richness to the space and emphasizes your style. By using different heights and textures, one can save space and improve functionality. Like all textures used in a space, coffee tables add value to the style. Different wood textures can be combined on the same surface. Glass surfaces and mirror detailing will turn the table to a more glamorous one by adding reflection and sparkle. One should pay attention to the style's prominent detailing to blend all these textures correctly. If using a coffee table made entirely of wood, choosing different textures or colours for the side tables would be more appealing.

THE DECORATION

- If all your accessories on the coffee table are of the same height, this may create a boring and monotonous look. You should go for items of different heights and dimensions.
- The materials used on the coffee table should not exceed the eye level and block eye contact when sitting down.
- In order not to create a clustered look, there should be no more than one or at most two sets of accessories.
- Fresh flowers break up the vagueness on a large coffee table and add motion. Tiny potted indoor plants create the same effect. One should be careful not to overwhelm the table dimensions.
- Stacked books are a practical way to add volume to the coffee table.
- One should consider the size of the coffee table when using accessories such as bowls, vases, trinkets and candles. For example, a short, wide bowl fills the surface on a large coffee table.



More than a coffee table

Whether it's a sofa set or a corner sofa, when decorating a room, don't forget to include functional and stylish coffee tables to provide the perfect visual balance! With next-generation coffee tables, while modern lines are completed with natural materials such as wood and marble, metallic details such as gold and black, as well as textures and patterns add different dimensions to the look.

Agnes Coffee Table Set

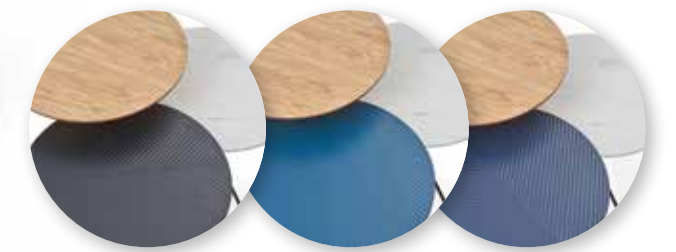
The flat surface of the coffee table is made of MDF. Metal Black feet are used with gold caps. Navy blue, Turquoise, Black and Orange coffee tables feature a laser pattern.

AGNES COFFEE TABLE SET DIMENSIONS

Laser cut black, navy blue,turquoise/
marble patterned/Oak patterned

W: 390 mm D: 390 mm H: 454 mm
W: 390 mm D: 390 mm H: 586 mm
W: 390 mm D: 390 mm H: 500 mm

COLOUR ALTERNATIVES



Maleki Coffee Table Set

Product top plates are made of MDF. Metal Black feet are used with gold caps. Navy blue, Turquoise, Black and Orange coffee tables feature a laser pattern.

MALEKI COFFEE TABLE SET DIMENSIONS

Laser cut navy blue, black, orange, turquoise /
Marble patterned/Walnut

W: 510 mm D: 510 mm H: 400 mm
W: 679 mm D: 679 mm H: 376 mm
W: 580 mm D: 580 mm H: 341 mm

COLOUR ALTERNATIVES





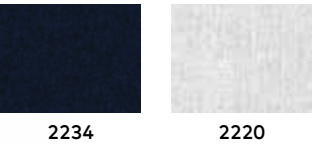
Yang Coffee Table & West Pouf

It is lacquered on MDF surface and there is a special terrazzo print in alignment with the latest trends on the top plate. The geometric quilted pattern on the pouf is complemented by a soft-textured chenille fabric.

YANG COFFEE TABLE SET WITH POUF

COFFEE TABLES : W: 480 mm D: 480 mm H: 461 mm
WEST CONCEPT POUF : W: 760 mm D: 745 mm H: 390 mm

FABRIC COLOUR ALTERNATIVES



COLOUR ALTERNATIVES



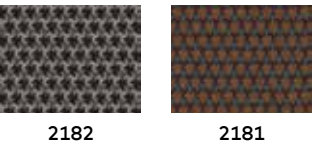
Viera Coffee table & Aretha Pouf

The marble looking glossy top on MDF and the matte gray lacquer painted top plates on the side table create an integrated look with the metal matte black legs. The rounded Aretha Pouf matches with the coffee table tables, completing the special geometric patterned fabric coffee table set.

DIMENSIONS OF VIERA COFFEE TABLE SET WITH POUF

RECTANGULAR COFFEE TABLE : W: 1230 mm D: 656 mm H: 380 mm
SIDE TABLE : W: 522 mm D: 522 mm H: 890 mm
ARETHA CONCEPT POUF : W: 715 mm D: 385 mm H: 380 mm

FABRIC COLOUR ALTERNATIVES



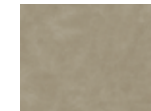


Linz Coffee Table

The coffee table top surface is lagina marble covered chipboard. Feet are gold plated metal.

LINZ COFFEE TABLE

W: 605 mm D: 345 mm H: 620 mm



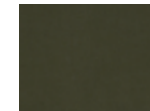
2208

Olinda Side Table

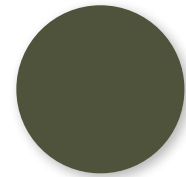
The coffee table top surface is made of chipboard. Leather fabric is used matching with RAL 6003 colour. The feet are metal and painted with black texture.

OLINDA SIDE TABLE

W: 440 mm D: 390 mm H: 620 mm



2208

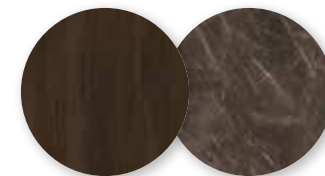


Lenora Nesting Table

Table top surfaces are made of Bianco Marble coated chipboard and Aral Walnut chipboard. Feet are gold plated metal.

LENORA COFFEE TABLE SET DIMENSIONS

W: 403 - 500 mm D: 403 - 404 mm H: 475 - 520 mm



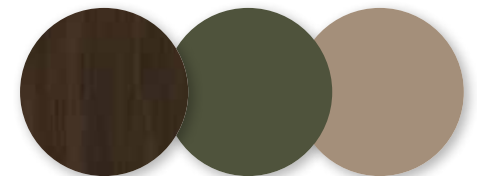
Olinda Coffee Table Set

Aral Walnut chipboard, Ral 1019 and Ral 6003 colour chipboard are used on the coffee table top surfaces. The feet are made of metal and painted with black texture.

OLINDA COFFEE TABLE SET DIMENSIONS

W: 500 mm D: 500 mm H: 426 mm
W: 700 mm D: 700 mm H: 390 mm
W: 390 mm D: 390 mm H: 457 mm

COLOUR ALTERNATIVES



Galeras Coffee table & Lita Pouf

The top plate of the product consists of Mirror & MDF, and the feet are made of Solid Lath. Top plate colour is Wenge – Bronze. Solid Lath and MDF are used together on the legs. The leg colour is Wenge with Gold details.

Lita Pouf completes the coffee table set with its special geometric form and patterned fabric.

DIMENSIONS OF GALERAS COFFEE TABLE SET WITH POUF

CENTRE COFFEE TABLE : W: 918 mm D: 918 mm H: 362 mm
SIDE TABLE : W: 679 mm D: 679 mm H: 442 mm
LITA CONCEPT POUF : W: 520 mm D: 520 mm H: 400 mm

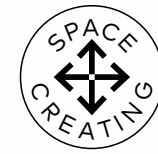
FABRIC COLOUR ALTERNATIVES



2163



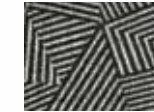
2161



Ares Coffee Table Set with Pouf

Matching black and bronze colours are used on the top plate. MDF and mirror are applied together in the product. Patterned fabric pouf is part of the set. The main colour of the product is Black.

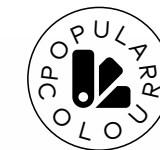
DIMENSIONS OF ARES COFFEE TABLE SET WITH POUF
CENTRE COFFEE TABLE : W: 925 mm D: 925 mm H: 435 mm



1800



Ruth Coffee table & Mona Pouf



The centre coffee table is lacquered on MDF in burnt orange tones, one of the most trendy colours of the season, whereas the side table is dark wenge coated. Stylish, striking legs with shiny gold coating harmonize with the top plates. A special woven fabric with a mini pattern is used in the Mona pouf, completing the coffee table set with its asymmetrical form, and leather preferred for the base.

DIMENSIONS OF RUTH COFFEE TABLE SET WITH POUF
CENTRE COFFEE TABLE : W: 912 mm D: 900 mm H: 385 mm
SIDE TABLE : W: 512 mm D: 500 mm H: 560 mm
MONA CONCEPT POUF : W: 850 mm D: 600 mm H: 360 mm

FABRIC COLOUR ALTERNATIVES



2187



6678



2186



2209



Pouf coffee table sets

Coffee tables with poufs are a choice that makes life much easier with designs that can serve different needs in living spaces of all sizes.

With their modular structures, they can be used in different zones based on their functions or layout. Just as the poufs within the sets come in different fabrics, pattern, and colour options, the coffee tables come in a variety of sizes, materials, textures, and colours, making them even more attractive for the user.

In addition to their material diversity, they can be practically adapted to changing decoration styles with their timeless designs. All that remains is to choose according to the place, style and need.

Arven Concept Large Pouf

Arven Large Pouf adapts to many spaces with its geometric shape and colour alternatives. It completes the elegant sewing detail with colourful fabric options.

ARVEN CONCEPT POUF SET - LARGE
W: 600 mm D: 600 mm H: 400 mm

FABRIC COLOUR ALTERNATIVES



Arven Concept Small Pouf

Arven Small Pouf adapts to many spaces with its geometric shape and colour alternatives. It completes the elegant sewing detail with colourful fabric options.

ARVEN CONCEPT POUF SET - SMALL
W: 320 mm D: 320 mm H: 420 mm

FABRIC COLOUR ALTERNATIVES



Alto Concept Pouf

Standing out with its wooden handle details and attracting attention with its aesthetic form, Alto pouf adds value to living spaces with its ability to be combined with many products.

PATTERNED ALTO CONCEPT POUF - ANTRECHITE
W: 440 mm D: 440 mm H: 445 mm

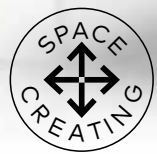
FABRIC COLOUR ALTERNATIVES





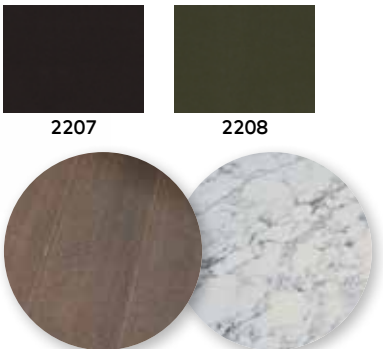
Pera Coffee table & Meis Pouf

It provides practical use with its two-piece folded centre coffee table design. A carrara marble looking table on MDF is used on the large coffee table, whereas a dark walnut wood-coated small coffee table can also be used as a side table. A square-shaped quilted leather Meis pouf also provides an integrated look with the colour alternatives of the Pera coffee table set.



DIMENSIONS OF PERA COFFEE TABLE SET WITH POUF
MARBLE COFFEE TABLE : W: 890 mm D: 410 mm H: 383 mm
WALLNUT COFFEE TABLE : W: 641 mm D: 641 mm H: 313 mm
MEIS CONCEPT POUF : W: 725 mm D: 725 mm H: 355 mm

FABRIC COLOUR ALTERNATIVES

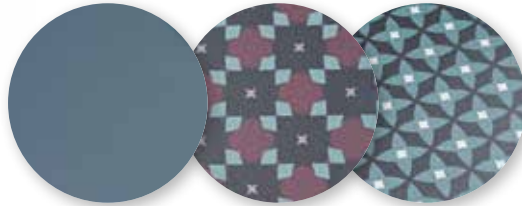


Fauna Coffee Table Set

Fauna coffee table set draws attention with its petrol and burgundy tones, creating trendy, stylish and glamorous combinations with Doğtaş-specific print patterns on MDF. Metal matte black pipe legs are used on the legs.



FAUNA COFFEE TABLE SET DIMENSIONS
ELIPS COFFEE TABLE : W: 932 mm D: 432 mm H: 430 mm
LARGE ROUND COFFEE TABLE : W: 500 mm D: 500 mm H: 400 mm
SMALL ROUND COFFEE TABLE : W: 350 mm D: 350 mm H: 480 mm





Lutie Coffee table & Ring Pouf

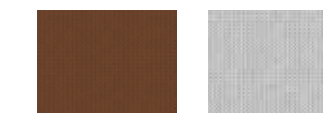
Product top plate is made of MDF. The legs are metal black profile. The top plate is laser patterned. There are different height alternatives as centre coffee table and side table. With its round form, the ring pouf can be used together with the Lutie coffee table set, or it can be combined based on its form.

LUTIE COFFEE TABLE SET WITH POUF
W: 604 - 694 mm D: 604 - 694 mm H: 371 - 421 mm

LUTIE PATTERNED SIDE TABLE SET
W: 380 - 454 mm D: 380 - 454 mm H: 521-571 cm

RING POUF
W: 600 mm D: 600 mm H: 400 mm

FABRIC COLOUR ALTERNATIVES



2250 2247



Merita Sofa Side Module

The top plate of the product is made of MDF. Metal profile black leg is used. Oak, walnut and black top plates are combined with a carrara marble looking bottom

Merita Sofa Side Module
W: 304 mm D: 99 mm H: 612 mm



COLOUR ALTERNATIVES



Rios Pouf Set

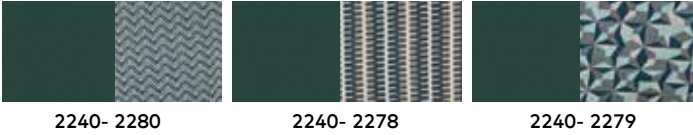
Rios pouf features a design that can be combined together or separately, with three different size options. Patterned and plain fabrics appeals to all tastes. It adds style to living spaces with its different geometry.



Rios Pouf Set - I

RIOS POUF SET - I
SMALL CONCEPT POUF: W: 440 mm D: 420 mm H: 190 mm
MEDIUM CONCEPT POUF: W: 550 mm D: 380 mm H: 430 mm
LARGE CONCEPT POUF: W: 1090 mm D: 500 mm H: 400 mm

FABRIC COLOUR ALTERNATIVES



2240- 2280

2240- 2278

2240- 2279

Rios Pouf Set - II

RIOS POUF SET - II
SMALL CONCEPT POUF : W: 440 mm D: 420 mm H: 190 mm
MEDIUM CONCEPT POUF : W: 550 mm D: 380 mm H: 430 mm
LARGE CONCEPT POUF : W: 1090 mm D: 500 mm H: 400 mm

FABRIC COLOUR ALTERNATIVES



2207- 1802

2207- 1806

2207- 1835



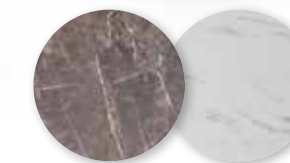
Meroni Rectangular Centre Coffee Table

Combining marble look and gold detail in living spaces, the Meroni coffee table adds elegance with its rectangular form. The Marmo and Bianco marble look is applied on MDF.

MERONI RECTENGULAR CENTRE COFFEE TABLE MARMO - BIANCO
W: 1390 mm D: 800 mm H: 300 mm



COLOUR ALTERNATIVES



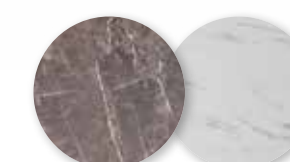
Castro Square Centre Coffee Table

Combining marble look and gold detail in living spaces, the Castro coffee table adds elegance with its square shape form. The Marmo and Bianco marble look is applied on MDF.

COSTA SQUARE CENTRE COFFEE TABLE BIANCO - MARMO
W: 800 mm D: 800 mm H: 300 mm



COLOUR ALTERNATIVES





Matera Concept Pouf

The Matera pouf adds a classic look to the setting with its quilted details highlighted by its leather upholstery.



Matera Concept Pouf

MATERA CONCEPT POUF - I
W: 725 mm D: 725 mm H: 360 mm

FABRIC COLOUR ALTERNATIVES



2024



2025

Castro Coffee Table Set with Pouf

The top plate of the product is made of Varna chipboard and Cosmos marble-looking chipboard. The legs are metal black profile.



CASTRO POUF COFFEE TABLE SET

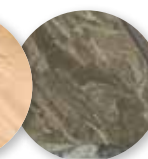
CENTRE COFFEE TABLE : W: 790 mm D: 790 mm H: 400 mm

SIDE TABLE : W: 490 mm D: 490 mm H: 600 mm

CASTRO CONCEPT POUF : W: 400 mm D: 400 mm H: 430 mm



1937



DOĞTAŞ®



www.dogtas.com