

# BW

MANUFACTURING INC.

## SURFACE PREPARATION EQUIPMENT

[www.bwmanufacturing.com](http://www.bwmanufacturing.com)

### 2019 Full Line Catalog



D-1800-FT4 with optional BH-18 Blast Head

Optional Attachments



SCB-1200-K with optional BH-12 Blasthead

Optional Attachments



SC-16 Scarifier Head



DG-50 Diamond Grinder/Polisher



SC-12 Scarifier Head



BR-25 Magnetic Sweeper



DG-25 Diamond Grinder/



SB-6 Shotblaster



DG-16 Diamond  
Grinder/Polisher



SC-9 Scarifier



A-404 Pulse Vac



B-202 Pulse Vac



B-101 Pulse Vac





## ***BW Manufacturing*** ***Founded 1996***

Since **BW Manufacturing** was founded in 1996. Our goal has been to build high-quality, easily serviceable, long-lasting surface preparation equipment. Our products are made for contractors in the building, restoration and maintenance industries, as well as utility plants, manufacturing plants and the Armed forces.

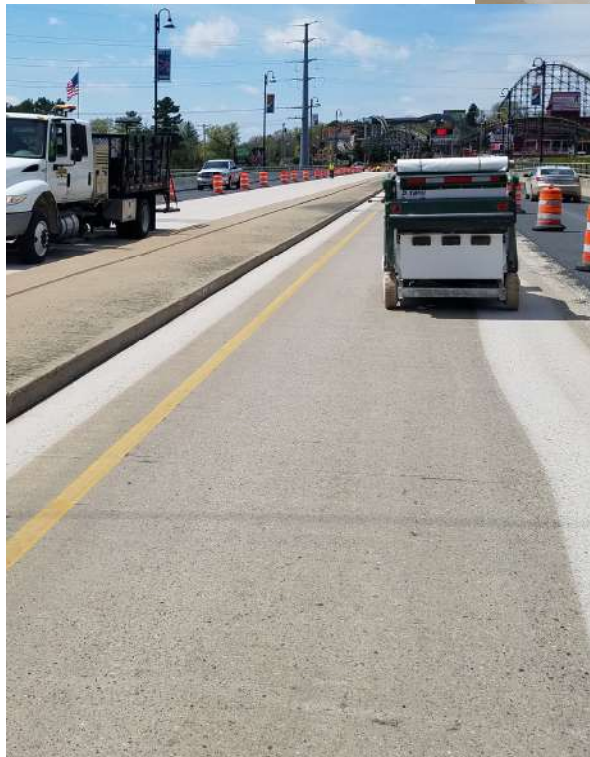
To achieve this goal, which is to offer the best and most efficient blasting systems available for surface preparation, we manufacture all of our equipment in one location, at our facility in Comstock Park, Michigan. We assure quality control during every step.

Contractors continue to face growing concerns regarding a shrinking workforce, tighter production schedules and increasing environmental regulations. Paints, coatings, mortars and floor coverings are becoming more difficult to remove or repair. But BW Manufacturing, along with the cooperation of our worldwide network of dealers and users, will continue to improve our products and introduce new and innovative tools.

We are always redesigning new accessories for existing concrete grinding equipment to increase utilization for use on the next generation of flooring materials. Our dedicated team strives to be, not only knowledgeable about the shot blasting equipment that we sell, but also understand our customer's needs and requirements.

Here at BW Manufacturing, we are willing to prove the value of our equipment through demonstrations - before the sale and unprecedented follow up after the sale. With our continued commitment to customer service, and the development of new dependable concrete grinding products, BW Manufacturing is positioned to forge ahead, impacting this growing industry.

If you are an existing customer, we thank you for your business and look forward to continuing to earn your ongoing business. If you are not a current customer, we welcome the opportunity to demonstrate to you why **BW Manufacturing** is the leader in concrete floor prep equipment. We offer a complete line of concrete diamond grinding tools and replacement parts to meet your needs.



# Ride-On Equipment & Attachments





\* Optional **Color**  
Change Upgrade





# D-1800-FT4 Chassis

## D-1800-FT4 Applications

- \* Industrial Floors
- \* Bridge Decks
- \* Parking Decks
- \* Highways
- \* Line Stripes
- \* Airport Runways & Hangers
- \* Steel Decking

## Optional Attachments

BH-18  
Blasthead



SC-16  
Scarifier



DG-50  
Diamond Grinder/Polisher



The D-1800-FT4 shown with optional BH-18 Blasthead Attachment

\*The Final Tier 4 diesel engine in the D-1800-FT4 is in compliance with emission standards in all 50 states.

Hydraulic Assisted Dust Bin



## Chassis/Specifications

**Interchangeable Heads:** Shotblast  
Scarifier  
Diamond Grinder/  
Polisher

**Tires:** Non-marking

**Length:** 115" (292cm)

**Width:** 57" (145cm)

**Height:** 60" (152cm)

**Weight:** 4480 lbs. 2032kgs)

**Engine**  
**(Final Tier IV Diesel):** 73 hp

**Drive:** Hydrostat

**Compressor:** Liquid Cooled 13 cfm.

**Vacuum:** 2280 cfm.

**Steering:** Power

**Collector Capacity:** 6.5 cubic ft. (.184 cubic meters)

**Drive wheel width:** 50" (127cm)

**Wheel base** 78" (198cm)

## INFORMATION

With hundreds of hours of customer feedback shaping and molding its design, the D-1800-FT4 with its ability to interchange heads and hydraulic dumping dust bin is the latest in state-of-the-art surface preparation technology.

With user friendly controls, a tilt-up hood that allows easier access to the engine compartment for service and maintenance, it also includes a seating position that gives the operator a better view in front and behind the attachments.

The interchangeability is what sets the D-1800-FT4 apart from the competition, with being able easily switch between shoblasting, scarifying and diamond grinding/polishing for all your surface preparation needs.

†Production rates achieved will be affected by variables specific to each job site. These figures are not guarantees of performance. For proper operation, the shot blasting unit must be used in conjunction with an appropriate dust collector.



Always wear appropriate eye, ear and respiratory protection for the application, as specified by OSHA regulations and your employer. Never operate or maintain equipment before reading and understanding the instructions for operation and maintenance. Obey all safety signs and instructions while operating or maintaining equipment.

## **BW Manufacturing, Inc.**

3706 Mill Creek Drive NE  
Comstock Park, Michigan 49321 U.S.A.

Phone: 616-447-9076 • BWMANUFACTURING.com





# BH-18 Shotblast Head Attachment

## Features

- Swivel Casters
- Feathered Edge Pattern
- Replaceable Liners
- 150lbs. Shot Capacity
- Replaceable Seals & Brush
- Easy To Change Blades
- Factory Pre-Set



## Shotblaster Applications

- Industrial Floors
- Bridge Decks
- Airport Runways & Hangers
- Parking Decks
- Steel Decking
- Highways

For use with any SCB-1600, SCB-16, D-1800 and D-1800-FT4 Chassis

## INFORMATION

The BH-18 Blasthead features the same feathered blast pattern found in the BH-16 Blasthead while delivering increased production with a 2" wider path. Fully replaceable inner liners increase housing life. Cushioned swivel casters allow for easy maneuvering over flat surfaces. Also, newly designed seals, floater plates, and shot separator system allow for increased output and decreased shot consumption. For more information on the BH-18 please contact BW Manufacturing, Inc or visit our website [www.bwmanufacturing.com](http://www.bwmanufacturing.com) to locate your nearest dealer.

## Shot Blast/Specifications

<b>Production Capacity†:</b>	3000 to 7000 ft <sup>2</sup> (278 to 650 m <sup>2</sup> per hour)
<b>Cleaning Path:</b>	18" (46cm) (4" & 5" Adaptors Available)
<b>Width with attachment:</b>	56" (142cm)
<b>Weight:</b>	760 lbs. (345kgs)
<b>Aisle Width Min:</b>	78" (198cm) (Blastable Width)

†Production rates achieved will be affected by variables specific to each job site. These figures are not guarantees of performance. For proper operation, the shot blasting unit must be used in conjunction with an appropriate dust collector.



Always wear appropriate eye, ear and respiratory protection for the application, as specified by OSHA regulations and your employer. Never operate or maintain equipment before reading and understanding the instructions for operation and maintenance. Obey all safety signs and instructions while operating or maintaining equipment.

## **BW Manufacturing**

3706 Mill Creek Drive NE  
Comstock Park, Michigan 49321 U.S.A.

Phone: 616-447-9076 • [BWMANUFACTURING.com](http://BWMANUFACTURING.com)







# SC-16 Scarifier Head Attachment

## Features

- Quick Change Cages
- Adjustable Cutting Depth
- Steel or Carbide Cutter Option
- Line Stripe Cages Available
- 1/4" Max. Depth
- Removal of Coatings, Membranes, Mastics & Epoxies



## Scarifier Applications

- Industrial Floors
- Bridge Decks
- Airport Runways & Hangers
- Parking Decks
- Steel Decking
- Highways



## Information

The SC-16 Scarifying Head attachment is a state of the art design that is self leveling, automatically adjusting itself to different contours of the floor or pavement. You will achieve an accurate removal of thin mill coatings to 1/4" overlays.

Versatility is the key to the SC-16 Scarifier Head attachment. With quick change cages you can go from steel to carbide cutters as well as different cage widths in minutes.

The SC-16 Scarifier Head Attachment will put you ahead of the competition with its faster production rates, and a vacuum collector system that eliminates dust and removes all material from the scarified surface.

For use with any SCB-1600, SCB-16, D-1800 and D-1800-FT4 Chassis

## SC-16 Specifications

<b><u>Production Capacity:</u></b>	500 to 1500 sfh (46 to 139 sqmh)
<b><u>Cleaning Path:</u></b>	4" to 16" (10cm to 40cm)
<b><u>Width with attachment:</u></b>	56" (142cm)
<b><u>Weight:</u></b>	620 lbs. (281kgs)

†Production rates achieved will be affected by variables specific to each job site. These figures are not guarantees of performance. For proper operation, the shot blasting unit must be used in conjunction with an appropriate dust collector.



Always wear appropriate eye, ear and respiratory protection for the application, as specified by OSHA regulations and your employer. Never operate or maintain equipment before reading and understanding the instructions for operation and maintenance. Obey all safety signs and instructions while operating or maintaining equipment.

## **BW Manufacturing**

3706 Mill Creek Drive NE  
Comstock Park, Michigan 49321 U.S.A.

Phone: 616-447-9076 • BWMANUFACTURING.com





# DG-50 Diamond Grinder/Polisher Head Attachment

## Features

- Floating Grinding Heads
- Dust Free Design
- NO Planetary Gears
- Individually Adjustable Heads
- Quick Change Diamonds
- Wide Range of Tooling



### Diamond Grinder/Polisher Applications

- Leveling Uneven Concrete
- Industrial Floors
- Parking Decks
- Coating Removal
- Concrete Polishing

### Information

The DG-50 Diamond Grinder/Polisher is unlike any other diamond grinder on the market today. What sets this floor grinder apart from all the others is the floating grinding heads and the specially designed shroud aides with the removing all material off the floor reducing clean up cost along with keeping the machine virtually dust free when connected to any large ride-on chassis

The technology started with our DG-16 that developed into the DG-25 and now the DG-50 with four independent heads that gives a grinding width of 50 inches. With quadruple, one piece 16" rubber mounted grinding heads (no planetary gears) that are adjusted up and down by air pressure, you have infinite adjustability.

This is not a converted terrazzo grinder or wood sander. This machine was designed for coating removal to high gloss polishing on totally dry concrete.

The diamond segments can easily be changed from course diamonds for coating removal to fine resin pads for polishing.

For use with any SCB-1600, SCB-16, D-1800 and D-1800-FT4 Chassis

## DG-50 SPECIFICATIONS

<b>Production Capacity:</b>	2500-5000 sfh (232 to 464 sqmh)
<b>Diamond Life:</b>	12000-28000 sf (1115 to 2601 sm)
<b>Cleaning Path:</b>	50" (127cm)
<b>Wheels:</b>	4 - 3-1/2" Inch (8.89cm) Swivel
<b>Weight:</b>	900 Lbs. (408kg)

†Production rates achieved will be affected by variables specific to each job site. These figures are not guarantees of performance. For proper operation, the shot blasting unit must be used in conjunction with an appropriate dust collector.



Always wear appropriate eye, ear and respiratory protection for the application, as specified by OSHA regulations and your employer. Never operate or maintain equipment before reading and understanding the instructions for operation and maintenance. Obey all safety signs and instructions while operating or maintaining equipment.

## BW Manufacturing

3706 Mill Creek Drive NE  
Comstock Park, Michigan 49321 U.S.A.

Phone: 616-447-9076 • [BWMANUFACTURING.com](http://BWMANUFACTURING.com)





# SCB-1200-K Chassis W/BH-12 Shotblast Head Attachment

## Features

- Built-in Compressed Air Filter Pulsation
- MERV16 Rated-99.7% @ .3 Microns Main Filters
- Large Dust Bin (3.8 cubic ft.)
- Kubota Final Tier 4 Engine
- Hydrostatic Drive
- Multiple Attachment Options
- Non-Marking Tires
- High CFM Vacuum

Also Available in  
240V/480V Three Phase  
Electric (Built to Order)

Powered By:



The SCB-1200-K shown with optional  
BH-12 Blasthead Attachment

\*The SCB-1200's Tier 4 diesel engine is in compliance with emission standards in all 50 states.

## Optional Attachments

BH-12  
Blasthead



SC-12  
Scarifier



DG-25  
Diamond Grinder/Polisher



BR-25  
Magnetic Sweeper



Removable Dust Bin



## Shotblaster Applications

- Industrial Floors
- Bridge Decks
- Airport Runways & Hangers
- Parking Decks
- Steel Decking
- Highways

## SCB-1200-K Specifications

### Interchangeable Head:

Shotblast  
Scarifier  
Diamond Grinder  
Magnet/Broom  
Non-marking

### Tires:

### Length:

81" (206cm)

### Width:

35" (89cm)

### Height:

54" (137cm)

### Weight:

1200 lbs. (544kgs)

### Engine (Kubota D902-E3B Tier IV Diesel)

24.8 hp  
Hydrostat

### Drive:

### Compressor:

4.5 cfm.

### Vacuum:

1480 cfm.

### Steering:

Manual

### Collector Capacity:

3.8 cubic ft.

### Aisle Width Min:

54" (137cm) (Blastable Width)

## Information

BW Manufacturing has produced the only mid-sized ride on surface preparation machine on the market.

The SCB-1200 features a removable dust containment box with wheels for ease of dumping. Along with one handed operation controls for raising and lowering heads, grinder speed, and diamond/shot engagement.

The interchangeable heads gives you the mobility and versatility to switch applications in minutes.

†Production rates achieved will be affected by variables specific to each job site. These figures are not guarantees of performance. For proper operation, the shot blasting unit must be used in conjunction with an appropriate dust collector.



Always wear appropriate eye, ear and respiratory protection for the application, as specified by OSHA regulations and your employer. Never operate or maintain equipment before reading and understanding the instructions for operation and maintenance. Obey all safety signs and instructions while operating or maintaining equipment.

## BW Manufacturing

3706 Mill Creek Drive NE  
Comstock Park, Michigan 49321 U.S.A.

Phone: 616-447-9076 • BWMANUFACTURING.com





# BH-12 Shotblast Head Attachment

## Features

- Feathered Edge Pattern
- Replaceable Liners
- 100lbs. Shot Capacity
- Replaceable Seals & Brushes
- Easy To Change Blast Wheel
- Factory Pre-Set



## Shotblaster Applications

- Industrial Floors
- Bridge Decks
- Airport Runways & Hangers
- Parking Decks
- Steel Decking
- Highways



## Information

The BH-12 Shotblast Head attachment delivers a feathered blasting edge which enables each successive path to overlap without excessive penetration, omitting the "striping effect". Easy blast wheel replacement eliminates costly down time. The finished surface is ideal for thin-set applications, clear coatings, as well as having the power to give you an aggressive blast profile when needed. For more information on the BH-12 please contact BW Manufacturing or visit our website [www.bwmanufacturing.com](http://www.bwmanufacturing.com) to locate your nearest dealer.

For use with any SCB-1200-D, SCB-1200-E or SCB-1200-K Chassis

## BH-12 Specifications

<b><u>Production Capacity†:</u></b>	1800 to 2200 sfh (167 to 204 sqm)
<b><u>Cleaning Path:</u></b>	12" (30cm) (4"&5" Adaptors Available)
<b><u>Width with attachment:</u></b>	36" (91cm)
<b><u>Weight:</u></b>	375 lbs. (170kgs)
<b><u>Aisle Width Min:</u></b>	54" (137cm) (Blastable Width)

†Production rates achieved will be affected by variables specific to each job site. These figures are not guarantees of performance. For proper operation, the shot blasting unit must be used in conjunction with an appropriate dust collector.



Always wear appropriate eye, ear and respiratory protection for the application, as specified by OSHA regulations and your employer. Never operate or maintain equipment before reading and understanding the instructions for operation and maintenance. Obey all safety signs and instructions while operating or maintaining equipment.

## **BW Manufacturing**

3706 Mill Creek Drive NE  
Comstock Park, Michigan 49321 U.S.A.

Phone: 616-447-9076 • [BWMANUFACTURING.com](http://BWMANUFACTURING.com)





# SC-12 Scarifier Head Attachment

## Features

- Quick Change Cages
- Adjustable Cutting Depth
- Steel or Carbide Cutter Option
- Line Stripe Cages Available
- 1/8" Max. Depth
- Removal of Coatings, Membranes, Mastics & Epoxies



Cage W/ Carbide Cutters



Cage W/ Steel Cutters

## Scarifier Application

- Rubber Membrane Removal
- Concrete Milling
- Line Striping
- Bridge and Parking Decks



## Information

The SC-12 Scarifying Head attachment is a state of the art design that is self leveling, automatically adjusting itself to different contours of the floor or pavement. You will achieve an accurate removal of thin mill coatings to 1/8" overlays.

Versatility is the key to the SCB-1200 with SC-12 Scarifier Head attachment. With quick change cages you can go from steel to carbide cutters as well as different cage widths in minutes.

The SCB-1200 with SC-12 Scarifier Head Attachment will put you ahead of the competition with its faster production rates, and a vacuum collector system that eliminates dust and removes all material from the scarified surface.

For use with any SCB-1200-D, SCB-1200-E or SCB-1200-K Chassis

## SC-12 Specifications

<b>Production Capacity†:</b>	500 to 1000 sfh (46 to 93 sqmh)
<b>Cleaning Path:</b>	4" to 12" (10cm to 30cm)
<b>Width with attachment:</b>	40" (102cm)
<b>Weight:</b>	420 lbs. (191kgs)
<b>Aisle Width Min:</b>	54" (137cm) (Scarifying Width)

†Production rates achieved will be affected by variables specific to each job site. These figures are not guarantees of performance. For proper operation, the shot blasting unit must be used in conjunction with an appropriate dust collector.



Always wear appropriate eye, ear and respiratory protection for the application, as specified by OSHA regulations and your employer. Never operate or maintain equipment before reading and understanding the instructions for operation and maintenance. Obey all safety signs and instructions while operating or maintaining equipment.

## BW Manufacturing

3706 Mill Creek Drive NE  
Comstock Park, Michigan 49321 U.S.A.

Phone: 616-447-9076 • BWMANUFACTURING.com





# DG-25 Diamond Grinder/Polisher Attachment

## Features

- Floating Grinding Heads
- Dust Free Design
- NO Planetary Gears
- Individually Adjustable Heads
- Quick Change Diamonds
- Wide Range of Tooling



### Diamond Grinder/Polisher Applications

- Leveling Uneven Concrete
- Industrial Floors
- Parking Decks
- Coating Removal
- Concrete Polishing



### Information

The DG-25 Diamond Grinder/Polisher is unlike any other diamond grinder on the market today. What sets this floor grinder apart from all the others is the floating grinding heads and the specially designed shroud aides with the removing all material off the floor reducing clean up cost along with keeping the machine virtually dust free when connected to any large ride-on chassis

The technology started with our DG-16 that developed into the DG-25 with two independent heads that gives a grinding width of 25 inches. With twin, one piece 16" rubber mounted grinding heads (no planetary gears) that are adjusted up and down by air pressure, you have infinite adjustability.

This is not a converted terrazzo grinder or wood sander. This machine was designed for coating removal to high gloss polishing on totally dry concrete.

The diamond segments can easily be changed from course diamonds for coating removal to fine resin pads for polishing.

For use with any SCB-1200-D, SCB-1200-E or SCB-1200-K Chassis

## DG-25 Specifications

<b>Production Capacity†:</b>	1400 to 2000 sfh (130 to 186 sqmh)
<b>Cleaning Path:</b>	25" (64cm)
<b>Width with attachment:</b>	52" (132cm)
<b>Weight:</b>	450 Lbs. (204kgs)
<b>Diamond Life:</b>	6000 to 14000 sf (557 to 1300 sm)

†Production rates achieved will be affected by variables specific to each job site. These figures are not guarantees of performance. For proper operation, the shot blasting unit must be used in conjunction with an appropriate dust collector.



Always wear appropriate eye, ear and respiratory protection for the application, as specified by OSHA regulations and your employer. Never operate or maintain equipment before reading and understanding the instructions for operation and maintenance. Obey all safety signs and instructions while operating or maintaining equipment.

## **BW Manufacturing**

3706 Mill Creek Drive NE  
Comstock Park, Michigan 49321 U.S.A.

Phone: 616-447-9076 • BWMANUFACTURING.com





# BR-25 Magnet Broom Head Attachment

## Features

- Adjustable Rotating Brush
- Powerful Integrated Magnet
- Dust and Debris Containment
- Remote Magnet Operation



## Magnet Broom Applications

- Warehouse Floors
- Garage Floors
- Industrial Floor Cleaning
- Driveways
- Walkways
- Aisle Ways



For use with any SCB-1200-D,  
SCB-1200-E or SCB-1200-K  
Chassis

## Information

The SCB-1200-BR-25 Magnet Broom is a self contained magnet, brush, and vacuum attachment all in one.

The BR-25 assists you with quick and easy cleaning of floors, driveways, sidewalks, parking lots, warehouses, and aisle ways.

The BR-25 efficiently sweeps and vacuums up dirt and debris from the floor while the front magnet picks up all metal material.

The BR-25 Magnet Broom replaces manual labor, hand brooms, and walk behind magnetic sweepers, allowing you to clean a large area with less effort and in less time.

## BR-25 Specifications

<b><u>Cleaning Path:</u></b>	25" (64cm)
<b><u>Side sweep clearance to wall:</u></b>	3" (8cm)
<b><u>Front sweep clearance to wall:</u></b>	22" (56cm)
<b><u>Wheels:</u></b>	3.5" Inch Swivel
<b><u>Width with attachment:</u></b>	51" (130cm)
<b><u>Weight:</u></b>	150 Lbs. (68kgs)
<b><u>Seal System:</u></b>	Brushes
<b><u>Magnet Size</u></b>	25" (64cm)

†Production rates achieved will be affected by variables specific to each job site. These figures are not guarantees of performance. For proper operation, the shot blasting unit must be used in conjunction with an appropriate dust collector.



Always wear appropriate eye, ear and respiratory protection for the application, as specified by OSHA regulations and your employer. Never operate or maintain equipment before reading and understanding the instructions for operation and maintenance. Obey all safety signs and instructions while operating or maintaining equipment.

## BW Manufacturing

3706 Mill Creek Drive NE  
Comstock Park, Michigan 49321 U.S.A.

Phone: 616-447-9076 • BWMANUFACTURING.com







# Walk Behind Equipment







# SB-6 Shotblaster

## Features

- Feathered Edge Blast Pattern
- Adjustable Handle
- 120 Volt (220V optional)
- 17 Amp draw (8A @ 220V)
- 3.4 HP Motor
- Line Stripe Adapters Available
- Lightweight & Compact Design



Line Stripe Adapter

## SB-6 Specifications

<b>Production Capacity†:</b>	200 to 400 SFH (19 to 37 sqmh)
<b>Cleaning Path:</b>	6" (15cm)(4" and 5" with adapter)
<b>Construction Material:</b>	Manganese
<b>Interchangeable Liners:</b>	ALL
<b>Wheels:</b>	3.5" Grey Poly
<b>Dimensions:</b>	Length: 16" (41cm) Height: 20" (51cm) Width: 14" (36cm)
<b>Weight:</b>	120 lbs. (54kgs)
<b>Motor:</b>	120V/17 Amp/3.4 HP (Standard) 220V/ 8 Amp/3.4 HP (Optional)
<b>Shot Capacity:</b>	15 lbs. (7kgs)
<b>Shot Impact Force:</b>	176 MPH (283km/h)
<b>Blast Clearance to wall:</b>	Side: 1.25" (3cm) Front: 10" (25cm) Rear: 6" (15cm)
<b>Seal System:</b>	Floater Plates & Brushes

## Shotblaster Applications

- Garage Floors
- Pool Decks
- Trim Work
- Basement Floors
- Line Stripes
- Surface Texturing

The SB-6 Shot Blaster is your lightweight, portable solution for small to medium size jobs. It's various applications makes it one of the most versatile surface prep machines available.

The SB-6 features an adjustable handle that allows you to pull or push the unit. This feature allows you the ability to blast in any corner including under shelving and machinery. The horizontally fed blast wheel design leaves a tapered blast edge pattern which eliminates any striping effect.

By interchanging the Lower Rear Liner the SB-6 can blast 4" and 5" line stripes in minutes. The SB-6 was designed to incorporate the liners and housing into one part giving you the ability to replace any and all wear components.

When connected to a BW Manufacturing dust collection system you achieve a virtually dust free shot blast system.

†Production rates achieved will be affected by variables specific to each job site. These figures are not guarantees of performance. For proper operation, the shot blasting unit must be used in conjunction with an appropriate dust collector.



Always wear appropriate eye, ear and respiratory protection for the application, as specified by OSHA regulations and your employer. Never operate or maintain equipment before reading and understanding the instructions for operation and maintenance. Obey all safety signs and instructions while operating or maintaining equipment.

## BW Manufacturing

3706 Mill Creek Drive NE  
Comstock Park, Michigan 49321 U.S.A.

Phone: 616-447-9076 • BWMANUFACTURING.com





**DG-16**

## **Diamond Grinder/Polisher**

### Features

- Rubber Mounted Grinding Head
- Adjustable Down Pressure
- 220V Single Phase Motor (440V Made to Order)
- 16" Grinding Path
- Belt Drive (No Costly Gearbox)
- Full line of tooling for any application
- Adjustable Handle

### Diamond Grinder/Polisher Applications

- Garage Floors
- Coating Removal
- Industrial Floor Resurfacing
- Concrete Polishing
- Surface Preparation



### DG-16 SPECIFICATIONS

<b><u>Cleaning Path:</u></b>	16" (41cm)
<b><u>Side grind clearance to wall:</u></b>	1" (3cm)
<b><u>Front grind clearance to wall:</u></b>	6" (15cm)
<b><u>Wheels:</u></b>	2 - 4 Inch Rigid 2 - 4 Inch Swivel
<b><u>Height:</u></b>	29" (74cm)
<b><u>Length:</u></b>	24" (61cm)
<b><u>Width:</u></b>	18" (46cm)
<b><u>Weight:</u></b>	210 Lbs.(95kgs) (Electric) 225 Lbs.(102kgs) (Gas)
<b><u>Motor Options:</u></b>	5 HP 220 Volt Single Phase 5 HP 440 Volt Three Phase
<b><u>Seal System:</u></b>	Flexible Rubber
<b><u>Control Handle:</u></b>	Fully Adjustable
<b><u>Production Capacity:</u></b>	700 to 1000 sfh (65 to 93 sqmh)
<b><u>Diamond Life:</u></b>	3000 to 7000 sf (278 to 650sqm)

### Effortless Diamond and Pad Replacement



The DG-16 walk behind is unlike any other grinder on the market today. The 16" floating grinding head is adjusted up and down using spring pressure, allowing infinite adjustability.

A specifically designed shroud keeps the machine and work area virtually dust free when connected to any BW Manufacturing Dust Collection system.

The DG-16 is designed for coating removal to high gloss polishing on totally dry concrete. From coarse diamond segments, for coating removal to fine resin pads for polishing, they can easily be changed to reach your desired gloss.

†Production rates achieved will be affected by variables specific to each job site. These figures are not guarantees of performance. For proper operation, the shot blasting unit must be used in conjunction with an appropriate dust collector.



Always wear appropriate eye, ear and respiratory protection for the application, as specified by OSHA regulations and your employer. Never operate or maintain equipment before reading and understanding the instructions for operation and maintenance. Obey all safety signs and instructions while operating or maintaining equipment.

## **BW Manufacturing**

3706 Mill Creek Drive NE  
Comstock Park, Michigan 49321 U.S.A.

Phone: 616-447-9076 • BWMANUFACTURING.com





# DG-16-G Diamond Grinder/Polisher

## Features

- Rubber Mounted Grinding Head
- Adjustable Down Pressure
- 13hp Honda Gas Engine
- 16" Grinding Path
- Belt Drive (No Costly Gearbox)
- Full line of tooling for any application
- Adjustable Handle

### Diamond Grinder/Polisher Applications

- Garage Floors
- Coating Removal
- Industrial Floor Resurfacing
- Concrete Polishing
- Surface Preparation



POWERED by  
**HONDA**™



## DG-16-G SPECIFICATIONS

<u>Cleaning Path:</u>	16" (41cm)
<u>Side grind clearance to wall:</u>	1" (3cm)
<u>Front grind clearance to wall:</u>	6" (15cm)
<u>Wheels:</u>	2 - 4 Inch Rigid 2 - 4 Inch Swivel
<u>Height</u>	29" (74cm)
<u>Length</u>	24" (61cm)
<u>Width</u>	18" (46cm)
<u>Weight</u>	225 Lbs.(102kgs) (Gas)
<u>Motor Options:</u>	13HP Gas (Honda)
<u>Seal System:</u>	Flexible Rubber
<u>Control Handle:</u>	Fully Adjustable
<u>Production Capacity:</u>	700 to 1000 sfh (65 to 93 sqmh)
<u>Diamond Life:</u>	3000 to 7000 sf (278 to 650sqm)

### Effortless Diamond and Pad Replacement



The DG-16 walk behind is unlike any other grinder on the market today. The 16" floating grinding head is adjusted up and down using spring pressure, allowing infinite adjustability.

A specifically designed shroud keeps the machine and work area virtually dust free when connected to any BW Manufacturing Dust Collection system.

The DG-16 is designed for coating removal to high gloss polishing on totally dry concrete. From coarse diamond segments, for coating removal to fine resin pads for polishing, they can easily be changed to reach your desired gloss.

†Production rates achieved will be affected by variables specific to each job site. These figures are not guarantees of performance. For proper operation, the shot blasting unit must be used in conjunction with an appropriate dust collector.



Always wear appropriate eye, ear and respiratory protection for the application, as specified by OSHA regulations and your employer. Never operate or maintain equipment before reading and understanding the instructions for operation and maintenance. Obey all safety signs and instructions while operating or maintaining equipment.

## **BW Manufacturing**

3706 Mill Creek Drive NE  
Comstock Park, Michigan 49321 U.S.A.

Phone: 616-447-9076 • [BWMANUFACTURING.com](http://BWMANUFACTURING.com)





# SC-9 Scarifier

## Features

- Solid Steel Construction
- Six Shafts Per Cage
- Simple Cage Removal
- 6.5hp Honda Engine

### Scarifier Applications

- Line Stripe Removal
- Surface Preparation
- Coating Removal
- Surface Texturing
- Mastic/Glue Removal
- High Spot Removal



**POWERED by**  
**HONDA™**

## SC-9 Specifications

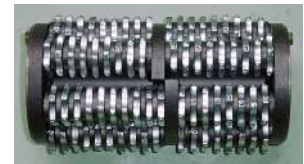
<b><u>Construction:</u></b>	All Steel Frame Powder Coated Body & Guards Heavy Duty Wheels
<b><u>Engine Options:</u></b>	6.5 HP Honda (Gas)
<b><u>Height:</u></b>	39" (99cm)
<b><u>Length:</u></b>	36" (91cm)
<b><u>Width:</u></b>	14" (36cm)
<b><u>Weight:</u></b>	150 Lbs (68kgs)



The SC-9 Scarifier is the contractors solution to small to medium size coating removal/preparation and repair jobs.

The SC-9 features a durable 1/4" welded steel body. Wheels are mounted close to the scarifying cage giving the unit the weight and balance to achieve light removal up to an 1/16" thick.

Specially designed six cage shaft allows for smooth operation. Easy cage changes eliminate costly down time. Your choice of hardened steel cutters, carbide cutters, or special milling flails with tungsten blades, allows you change the function of the machine in minutes.



The six shaft configuration allows for:

- More cutters per load and increased grinding action
- Fewer cutter changes increases production capabilities
- Smoother drum rotation leads to less machine vibration

†Production rates achieved will be affected by variables specific to each job site. These figures are not guarantees of performance. For proper operation, the shot blasting unit must be used in conjunction with an appropriate dust collector.



Always wear appropriate eye, ear and respiratory protection for the application, as specified by OSHA regulations and your employer. Never operate or maintain equipment before reading and understanding the instructions for operation and maintenance. Obey all safety signs and instructions while operating or maintaining equipment.

## **BW Manufacturing**

3706 Mill Creek Drive NE  
Comstock Park, Michigan 49321 U.S.A.

Phone: 616-447-9076 • [BWMANUFACTURING.com](http://BWMANUFACTURING.com)





# SC-9-2 Scarifier

## Features

- Solid Steel Construction
- Six Shafts Per Cage
- Simple Cage Removal
- 5hp 220V Motor

## Scarifier Applications

- Line Stripe Removal
- Surface Preparation
- Coating Removal
- Surface Texturing
- Mastic/Glue Removal
- High Spot Removal



The SC-9 Scarifier is the contractors solution to small to medium size coating removal/preparation and repair jobs.

The SC-9 features a durable 1/4" welded steel body. Wheels are mounted close to the scarifying cage giving the unit the weight and balance to achieve light removal up to an 1/16" thick.

Specially designed six cage shaft allows for smooth operation. Easy cage changes eliminate costly down time. Your choice of hardened steel cutters, carbide cutters, or special milling flails with tungsten blades, allows you change the function of the machine in minutes.

†Production rates achieved will be affected by variables specific to each job site. These figures are not guarantees of performance. For proper operation, the shot blasting unit must be used in conjunction with an appropriate dust collector.

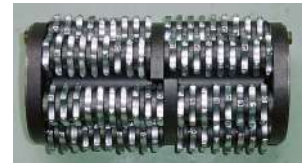


Always wear appropriate eye, ear and respiratory protection for the application, as specified by OSHA regulations and your employer. Never operate or maintain equipment before reading and understanding the instructions for operation and maintenance. Obey all safety signs and instructions while operating or maintaining equipment.



## SC-9 Specifications

<b><u>Construction:</u></b>	All Steel Frame Powder Coated Body & Guards Heavy Duty Wheels
<b><u>Engine Options:</u></b>	5 HP 220 Volt Single Phase
<b><u>Height:</u></b>	39" (99cm)
<b><u>Length:</u></b>	36" (91cm)
<b><u>Width:</u></b>	14" (36cm)
<b><u>Weight:</u></b>	150 Lbs (68kgs)



The six shaft configuration allows for:

- More cutters per load and increased grinding action
- Fewer cutter changes increases production capabilities
- Smoother drum rotation leads to less machine vibration

## **BW Manufacturing**

3706 Mill Creek Drive NE  
Comstock Park, Michigan 49321 U.S.A.

Phone: 616-447-9076 • [BWMANUFACTURING.com](http://BWMANUFACTURING.com)







# Grinding/Hand Held Polishing







# DG-71-ME Hand Held Diamond Grinder & Shroud

## Features

- Metabo Model #W24-230
- Durable steel shroud construction
- 3/8" wall clearance
- Rubber baffle design

## Applications

- Coating removal
- Concrete preparation
- Controlled environment grinding
- Garage and basement floor preparation



Hardened Steel Sealing Ring



The new innovative DG-725-ME Grinder Shroud was designed to grind irregular surface environments encountered on concrete floors.

The first of it's kind steel sealing ring glides easily over any surface, and is carburized and hardened to give you years of dust free grinding without wear.

The DG-725-ME also features a rubber mount specifically designed to connect to the shroud. The rubber mount allows you to move the grinder at any angle, while keeping the sealing ring of the shroud body in full contact with the concrete surface, providing exceptional dust containment. A rubber diaphragm controls the amount of vacuum force that is connected to the grinder which prevents the shroud from sticking to the floor like a suction cup.

The DG-725-ME also features the use of a smaller connecting vacuum hose that will not obstruct the movement of the grinder. The DG-725-ME Grinder Shroud is designed to fit the Metabo Model# W24-240 and are sold together as DG-71-ME Hand Held Diamond Grinder.



Rubber Mount



†Production rates achieved will be affected by variables specific to each job site. These figures are not guarantees of performance. For proper operation, the shot blasting unit must be used in conjunction with an appropriate dust collector.

Always wear appropriate eye, ear and respiratory protection for the application, as specified by OSHA regulations and your employer. Never operate or maintain equipment before reading and understanding the instructions for operation and maintenance. Obey all safety signs and instructions while operating or maintaining equipment.

## **BW Manufacturing**

3706 Mill Creek Drive NE  
Comstock Park, Michigan 49321 U.S.A.

Phone: 616-447-9076 • [BWMANUFACTURING.com](http://BWMANUFACTURING.com)





# DG-4.5-ME Hand Held Diamond Grinder/Polisher

## Features

- Variable Speed
- Metabo Model# WE14-125VS
- Durable steel shroud
- Removable side for edge work

## Applications

- Grinding
- Polishing
- Coating removal
- Trim work
- Vertical walls



DG-4.5-ME Diamond Grinder/  
Polisher shown with optional backing  
pad and polishing pad

†Production rates achieved will be affected by variables specific to each job site. These figures are not guarantees of performance. For proper operation, the shot blasting unit must be used in conjunction with an appropriate dust collector.



Always wear appropriate eye, ear and respiratory protection for the application, as specified by OSHA regulations and your employer. Never operate or maintain equipment before reading and understanding the instructions for operation and maintenance. Obey all safety signs and instructions while operating or maintaining equipment.

## **BW Manufacturing**

3706 Mill Creek Drive NE  
Comstock Park, Michigan 49321 U.S.A.

Phone: 616-447-9076 • [BWMANUFACTURING.com](http://BWMANUFACTURING.com)



# Containment Dust Systems







# A-404 Pulse Vac Dust Containment System

## Features

- Built-in Compressed Air Filter Pulsation
- MERV16 Rated-99.7% @ .3 Microns Main Filters
- 5.5hp Honda Gas Engine (220V Optional)
- 18" H2O Lift (sealed)
- 1175 CFM @ one 5" (Certified under Project# 17-161)
- 55 Gallon Drum (1000lbs. Capacity)
- Two 5" Inlets

POWERED by  
**HONDA**™

## Vacuum Chart

Model	Port Size	CFM	Inch Lift
A-404 (Gas or Elect.)	Sealed	0	18.2
A-404 (Gas or Elect.)	1 - 5"	1175	3.0
A-404 (Gas or Elect.)	2 - 5"	620 ea.	1.5

All testing has been completed in a controlled environment at BW Manufacturing by Great Lakes Balancing using a Shortridge Airdata Multimater - Model# ADM 860 on November 28th, 2017 and measured at the neck of each vacuum.

These figures should be used as a reference only.

Great for dust free applications



Pivoting drum for ease of dumping.



The A-404 Pulse Vac has been designed for the contractor who requires a larger amount of dust containment, automatic filter pulsation, and a high CFM. The A-404 utilizes a 55-gallon drum that can contain up to 1000 lbs. of material, and with the optional Drum Liner the material can be disposed of quickly and properly. The A-404 offers two 5" inlet ports, along with optional motor choices between a 5.5HP Honda gas engine and a 220V Electric motor, expand the versatility of the vacuum.

The field tested, and proven pulsation control is designed for maximum productivity in the field. And with a reversed charge of compressed air, the filters are alternately pulsed clean every 10-15 seconds ensuring the A-404 has continuous vacuum.

With your reduction in filter cleaning labor, adaptability to all shrouded equipment, and rugged construction makes the A-404 a perfect fit for your dust containment needs.

## A-404 SPECIFICATIONS

### NOTICE

When properly using BW Manufacturing dust shrouds in conjunction with a BW Manufacturing dust collection system you will exceed the government standard 99% or greater filter efficiency\*.

Stock Filter:

10129-H (MERV16 Rated-99.7% @ .3 Microns)

Optional Filters:

10129-B (Efficiency of 99.9% @ 1 Micron "Caked")

(\*OSHA Regulation # 1926.1153)



### Construction:

Steel

### Vacuum Hose:

One 5" x 15' (standard)

### Motor Options:

220 Volts 5HP Single Phase (18 Amp Draw)  
Gas 5.5HP (Honda)

### Compressor:

2.5 CFM Air Cooled

### Dimensions:

Height.....61" (155cm)

Length.....42" (107cm)

Width.....34" (87cm)

Weight.....590 lbs. (268kgs)

### Wheels:

Two 8" 880 lb. rubber wheels

Two 8" 880 lb. swivel caster

### Filtration:

Specially designed pleated cartridge.



†Production rates achieved will be affected by variables specific to each job site. These figures are not guarantees of performance. For proper operation, the shot blasting unit must be used in conjunction with an appropriate dust collector.

Always wear appropriate eye, ear and respiratory protection for the application, as specified by OSHA regulations and your employer. Never operate or maintain equipment before reading and understanding the instructions for operation and maintenance. Obey all safety signs and instructions while operating or maintaining equipment.

## BW Manufacturing

3706 Mill Creek Drive NE  
Comstock Park, Michigan 49321 U.S.A.

Phone: 616-447-9076 • BWMANUFACTURING.com





# B-202 Pulse Vac Dust Containment System

## Features

- Built-in Compressed Air Filter Pulsation
- MERV16 Rated-99.7% @ .3 Microns Main Filters
- 5.5hp Honda Gas Engine (220V Optional)
- 18" H2O Lift (sealed)
- 1105 CFM @ 5" (Certified under Project# 17-161)
- 30 Gallon Drum (600lbs. Capacity)
- Heavy Duty Casters

POWERED by  
**HONDA**™

### Vacuum Chart

Model	Port Size	CFM	Inch Lift
B-202 (Gas or Elect.)	Sealed	0	18.0
B-202 (Gas or Elect.)	1 - 5"	1105	3.0
B-202 (Gas or Elect.)	2 - 2"	295 ea.	5.0

All testing has been completed in a controlled environment at BW Manufacturing by Great Lakes Balancing using a Shortridge Airdata Multimeter - Model# ADM 860 on November 28th, 2017 and measured at the neck of each vacuum. These figures should be used as a reference only.



Shown with optional drum liner



The B-202 Pulse Vac has been designed for the contractor who requires a larger amount of dust containment, automatic filter pulsation, and a high CFM. The B-202 utilizes a 30-gallon drum that can contain up to 600 lbs. of material, and with the optional Drum Liner the material can be disposed of quickly and properly. The B-202 offers a 5" and two 2" inlet ports, along with optional motor choices between a 5.5HP Honda gas engine and a 220V Electric motor, expand the versatility of the vacuum.

The field tested, and proven pulsation control is designed for maximum productivity in the field. And with a reversed charge of compressed air, the filters are alternately pulsed clean every 10-15 seconds ensuring the B-202 has continuous vacuum.

With your reduction in filter cleaning labor, adaptability to all shrouded equipment, and rugged construction makes the B-202 a perfect fit for your dust containment needs.

## B-202 SPECIFICATIONS

### NOTICE

When properly using BW Manufacturing dust shrouds in conjunction with a BW Manufacturing dust collection system you will exceed the government standard 99% or greater filter efficiency\*.

Stock Filter:

10129-H (MERV16 Rated-99.7% @ .3 Microns)

Optional Filters:

10129-B (Efficiency of 99.9% @ 1 Micron "Caked")

(\*OSHA Regulation # 1926.1153)



**Construction:**  
Steel

**Vacuum Hose:**  
5" x 15' (standard)  
2# 2"x15' (optional)

**Motor Options:**  
Gas 5.5HP (Honda)  
220 Volts 5HP Single Phase (18 Amp Draw)

**Compressor:**  
1.8 CFM Oil Filled

**Dimensions:**  
Height.....59" (150cm)  
Length.....34 1/2" (88cm)  
Width.....28" (71cm)  
Weight.....375 lbs. (170kgs)

**Wheels:**  
Two 5" 200 lb. rubber wheels  
Two 5" 200 lb. swivel caster

**Filtration:**  
Specially designed pleated cartridge.



†Production rates achieved will be affected by variables specific to each job site. These figures are not guarantees of performance. For proper operation, the shot blasting unit must be used in conjunction with an appropriate dust collector.

Always wear appropriate eye, ear and respiratory protection for the application, as specified by OSHA regulations and your employer. Never operate or maintain equipment before reading and understanding the instructions for operation and maintenance. Obey all safety signs and instructions while operating or maintaining equipment.

**BW Manufacturing**

3706 Mill Creek Drive NE  
Comstock Park, Michigan 49321 U.S.A.

Phone: 616-447-9076 • BWMANUFACTURING.com







# B-101 Pulse Vac Dust Containment System

## Features

- Built-in Compressed Air Filter Pulsation
- MERV16 Rated Main Filter
- 120 Volt
- Twin Vac Motors
- 16 Amp draw
- 89" H2O Lift (sealed)
- 205 CFM @ 2"
- Durable Plastic Drum
- Replaceable Drum Liner

### Vacuum Chart

Model	Port Size	CFM	Inch Lift
B-101 (electric)	Sealed	0	89
B-101 (electric)	2"	205	3.0

All specifications are taken directly from the vacuum motors manufacture specification sheet.  
*These figures should be used as a reference only.*



The B-101 Pulse Vac is unlike any other vacuum on the market today. The built-in air filter pulsation system continuously cleans the air filter, making it ideal for the removal of fine dust powders without clogging. The B-101 Pulse Vac houses twin vacuum motors and an on-board air compressor only drawing 16 Amps at 120V. Your reduction in filter cleaning labor combined with its adaptability to all shrouded equipment, the B-101 Pulse Vac is the most essential and recommended vacuum by contractors today.

## NOTICE

When properly using BW Manufacturing dust shrouds in conjunction with a BW Manufacturing dust collection system you will exceed the government standard 99% or greater filter efficiency\*.

Stock Filter:

10129-H (MERV16 Rated-99.7% @ .3 Microns)

Optional Filters:

10129-B (Efficiency of 99.9% @ 1 Micron "Caked")

(\*OSHA Regulation # 1926.1153)



## B-101 SPECIFICATIONS

### Construction:

Plastic 16 gallon drum  
 Powder coated body

### Vacuum Hose:

2" x 15' (Model: A-101-C)

### Vac Motor:

Twin 120 volts

### Compressor:

120 volts Oil-less

### Dimensions:

Height.....39.5" (100cm)  
 Length.....33" (84cm)  
 Width.....16" (41cm)  
 Weight.....131 lbs. (59kgs)

### Wheels:

Two 8" rubber wheels w/bearings  
 One 4" 250 lb. swivel rubber caster

### Primary Filtration:

Specially designed pleated cartridge.



†Production rates achieved will be affected by variables specific to each job site. These figures are not guarantees of performance. For proper operation, the shot blasting unit must be used in conjunction with an appropriate dust collector.

Always wear appropriate eye, ear and respiratory protection for the application, as specified by OSHA regulations and your employer. Never operate or maintain equipment before reading and understanding the instructions for operation and maintenance. Obey all safety signs and instructions while operating or maintaining equipment.

## BW Manufacturing

3706 Mill Creek Drive NE  
 Comstock Park, Michigan 49321 U.S.A.

Phone: 616-447-9076 • BWMANUFACTURING.com





# Accessories & Consumables







# M-30 Magnetic Sweeper

## Features

- Ergonomic design
- Powerful magnet
- Inset wheels
- One hand operation
- Stainless steel construction



The ergonomically designed M-30 30" Magnetic Sweeper is manufactured with the shot blaster in mind.

With the 8" rubber wheels mounted in the rear giving you the ability to get in any corner and making the sweeper highly maneuverable.

Powerful ceramic magnets expands the pick-up area beyond the sweeper. And with the handle mounted release lever makes for ease of operation

## M-30 SPECIFICATIONS

- Construction: Steel 12 Gauge Stainless Steel Body
- Dimensions: Height.....41" (104cm)  
 Width.....30" (76cm)  
 Weight.....60 lbs. (27kgs)
- Wheels: Two 8" (20cm) Rubber Wheels
- Lift Capacity: 600 lbs. (272kgs)

†Production rates achieved will be affected by variables specific to each job site. These figures are not guarantees of performance. For proper operation, the shot blasting unit must be used in conjunction with an appropriate dust collector.



Always wear appropriate eye, ear and respiratory protection for the application, as specified by OSHA regulations and your employer. Never operate or maintain equipment before reading and understanding the instructions for operation and maintenance. Obey all safety signs and instructions while operating or maintaining equipment.

## **BW Manufacturing**

3706 Mill Creek Drive NE  
Comstock Park, Michigan 49321 U.S.A.

Phone: 616-447-9076 • BWMANUFACTURING.com



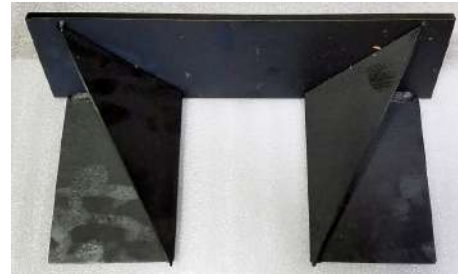


## Line Stripe Adapters for Shotblasting

H-396-8 Line Stripe Adapter - 8" for the BH-18



S-1635-AS Line Stripe Adapter - 6" for the BH-16



K-06-LAS Line Stripe Adapter - 6" for the BH-12



G-60-AS Line Stripe Adapter - 4" for the SB-6



†Production rates achieved will be affected by variables specific to each job site. These figures are not guarantees of performance. For proper operation, the shot blasting unit must be used in conjunction with an appropriate dust collector.



Always wear appropriate eye, ear and respiratory protection for the application, as specified by OSHA regulations and your employer. Never operate or maintain equipment before reading and understanding the instructions for operation and maintenance. Obey all safety signs and instructions while operating or maintaining equipment.

### **BW Manufacturing**

3706 Mill Creek Drive NE  
Comstock Park, Michigan 49321 U.S.A.

Phone: 616-447-9076 • [BWMANUFACTURING.com](http://BWMANUFACTURING.com)





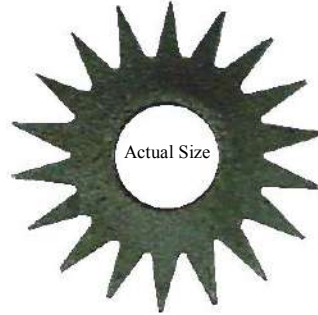
# Steel & Carbide Cutter For Scarifier Equipment

## STOCKED CUTTERS

A-8C5  
1-5/8"x1/4"x5/8"Hole



A-800-S  
1-5/8"x1/8"x5/8"Hole



A-16C12  
3-1/4"x5/16"x1"Hole



SC-1630  
3"x3/16"x1"Hole



Additional Sizes and Styles Available.  
Call For Availability & Pricing.



†Production rates achieved will be affected by variables specific to each job site. These figures are not guarantees of performance. For proper operation, the shot blasting unit must be used in conjunction with an appropriate dust collector.

Always wear appropriate eye, ear and respiratory protection for the application, as specified by OSHA regulations and your employer. Never operate or maintain equipment before reading and understanding the instructions for operation and maintenance. Obey all safety signs and instructions while operating or maintaining equipment.

**BW Manufacturing**

3706 Mill Creek Drive NE  
Comstock Park, Michigan 49321 U.S.A.

Phone: 616-447-9076 • [BWMANUFACTURING.com](http://BWMANUFACTURING.com)





# Diamond Cutters - PCD Cutters - Carbide Scrapers

## Hard Concrete Diamond Cutters (Sold in sets of 3) US Patent# 7,997,960B2

Part Number	Grit	Color	
R-07-16S	Extra Coarse 16 Grit	Dark Green	
R-07-30S	Coarse 30 Grit	Red	
R-07-80S	Medium 80 Grit	Yellow	
R-07-140S	Medium/Fine 140 Grit	Blue	
R-07-180S	Fine 180 Grit	Black	

## Soft Concrete Diamond Cutters (Sold in sets of 3) US Patent# 7,997,960B2

Part Number	Grit	Color	
R-07-30HS	Coarse 30 Grit	Silver	
R-07-80HS	Medium 80 Grit	Orange	
R-07-140HS	Medium/Fine 140 Grit	Gold	
R-07-180HS	Fine 180 Grit	Dark Gray	

## PCD Cutters for heavy coating removal (Sold in sets of 3)



PCD Cutters  
R-07-PCDFS Poly-Carbonate Diamond  
*Minimal down pressure required when using PCD Cutters*  
**PCD Cutters carry NO WARRANTY**

## Carbide Scrapers & Mounts for carpet glue and mastic (Sold in sets of 3)



Carbide mount  
R-07-CS Carbide mount  
R-07-CC-S Carbide segment  
R-08 Cap screw



†Production rates achieved will be affected by variables specific to each job site. These figures are not guarantees of performance. For proper operation, the shot blasting unit must be used in conjunction with an appropriate dust collector.

Always wear appropriate eye, ear and respiratory protection for the application, as specified by OSHA regulations and your employer. Never operate or maintain equipment before reading and understanding the instructions for operation and maintenance. Obey all safety signs and instructions while operating or maintaining equipment.

### BW Manufacturing

3706 Mill Creek Drive NE  
Comstock Park, Michigan 49321 U.S.A.

Phone: 616-447-9076 • BWMANUFACTURING.com







# Polishing Pads & Accessories

## DG-16, DG-25 & DG-50 Grinding & Polishing Accessories

### Round Diamond Cutters for smoothing concrete prior to polishing



Round Diamond Cutters  
(Sold in sets of 6)  
Hard Concrete



R-07-D31S Coarse (RED)  
R-07-D81S Medium (YELLOW)  
R-07-D141S Med/Fine (BLUE)

Round Diamond Cutters  
(Sold in sets of 6)  
Soft Concrete

R-07-D81HS Medium (ORANGE)  
R-07-D141HS Med/Fine (GOLD)



### Double Polishing Pad & Round Diamond Mounts

(Sold in sets of 3)

R-07-P2AS 3" Mount Set



### Single Polishing Pad Mounts

(Sold in sets of 3)

R-07-PS 3" Mount Set



### 3" Polishing pads

(Sold Individually)

RP-50 3" 50 Grit  
RP-120 3" 120 Grit  
RP-220 3" 220 Grit  
RP-400 3" 400 Grit  
RP-800 3" 800 Grit  
RP-1800 3" 1800 Grit  
RP-3500 3" 3500 Grit

### 3" Polishing Kit

(For medium removal to a polish)

Part#	Includes
R-130	1ea. R-07-P2AS 1ea. R-07-D81S 1ea. R-07-D141S 6ea. RP-50 6ea. RP-120 6ea. RP-220 6ea. RP-400 6ea. RP-800



## 4.5" Hand Grinder Polishing Accessories



### 4.5" Backer Pad

R-132-A 4.5" Polishing Backer Pad (5/8-11 Thread)



### 4.5" Polishing Pads

R-133 4.5" 50 Grit  
R-134 4.5" 200 Grit  
R-135 4.5" 400 Grit



†Production rates achieved will be affected by variables specific to each job site. These figures are not guarantees of performance. For proper operation, the shot blasting unit must be used in conjunction with an appropriate dust collector.

Always wear appropriate eye, ear and respiratory protection for the application, as specified by OSHA regulations and your employer. Never operate or maintain equipment before reading and understanding the instructions for operation and maintenance. Obey all safety signs and instructions while operating or maintaining equipment.

## BW Manufacturing

3706 Mill Creek Drive NE  
Comstock Park, Michigan 49321 U.S.A.

Phone: 616-447-9076 • BWMANUFACTURING.com





## Diamond Cup Wheels 7" & 4.5" Sizes

**DG-712**  
7" Diamond Cup  
W/ 12 Segments



**DG-724**  
7" Diamond Cup  
W/ 24 Segments



**DG-7PCD**  
7" PCD Cup  
W/ 6 PCD & 3 TCT Riders



**DG-459**  
4.5" Diamond Cup  
W/ 9 Segments



**DG-415**  
4.5" Diamond Cup  
W/ 15 Segments



**Additional Sizes and Styles Available.  
Call For Availability & Pricing.**

†Production rates achieved will be affected by variables specific to each job site. These figures are not guarantees of performance. For proper operation, the shot blasting unit must be used in conjunction with an appropriate dust collector.



Always wear appropriate eye, ear and respiratory protection for the application, as specified by OSHA regulations and your employer. Never operate or maintain equipment before reading and understanding the instructions for operation and maintenance. Obey all safety signs and instructions while operating or maintaining equipment.

**BW Manufacturing**

3706 Mill Creek Drive NE  
Comstock Park, Michigan 49321 U.S.A.

Phone: 616-447-9076 • [BWMANUFACTURING.com](http://BWMANUFACTURING.com)





# Concrete Saw Shrouds

<u>MODEL#</u>	<u>BW PART#</u>	<u>DESCRIPTION</u>
Soff-Cut Model: X150	SO-19-AS	Concrete Saw Shroud
Soff-Cut Model: GX1500	SO-15-AS	Concrete Saw Shroud
Soff-Cut Model: X2000	SO-7-AS	Concrete Saw Shroud
Soff-Cut Model: X2500 & G2000	SO-10-AS	Concrete Saw Shroud
Soff-Cut Model: GX4200	SO-3-AS	Concrete Saw Shroud
Soff-Cut Model: X4000	SO-5-AS	Concrete Saw Shroud
Soff-Cut Model: 5000	SO-13-AS	Concrete Saw Shroud
Core-Cut CC190 Pro-EE	DP-002-ASA	Concrete Saw Shroud
Core-Cut CC150XL-EE	DP-022-AS	Concrete Saw Shroud



Production rates achieved will be affected by variables specific to each job site. These figures are not guarantees of performance. For proper operation, the shot blasting unit must be used in conjunction with an appropriate dust collector.

Always wear appropriate eye, ear and respiratory protection for the application, as specified by OSHA regulations and your employer. Never operate or maintain equipment before reading and understanding the instructions for operation and maintenance. Obey all safety signs and instructions while operating or maintaining equipment.

**BW Manufacturing**

3706 Mill Creek Drive NE  
Comstock Park, Michigan 49321 U.S.A.

Phone: 616-447-9076 BWMANUFACTURING.com







From general maintenance to complete attachment rebuild of your BW Manufacturing equipment.



*We have you covered!!*



3706 Mill Creek Drive NE Comstock Park, MI 49321 U.S.A.

Phone: 616-447-9076 Fax: 616--9078

E-mail: [info@bwmanufactuirng.com](mailto:info@bwmanufactuirng.com) Website: [bwmanufacturing.com](http://bwmanufacturing.com)