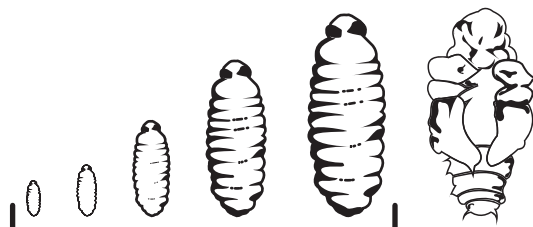
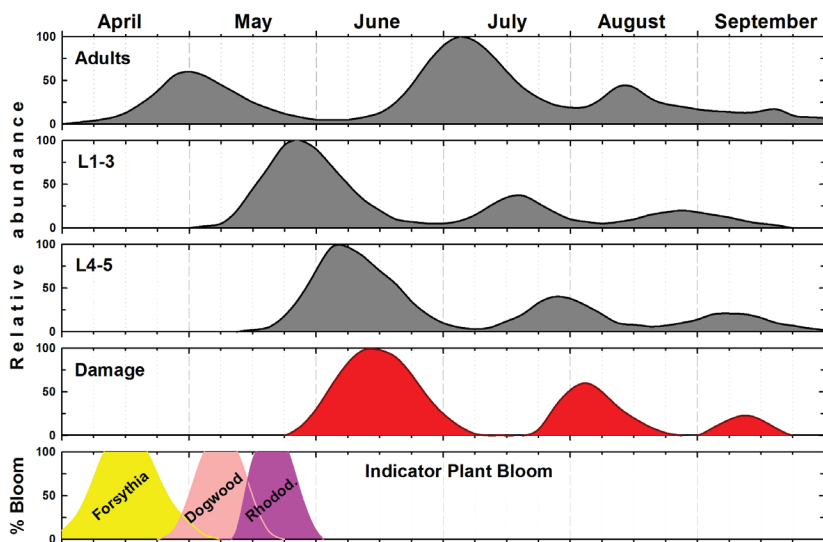


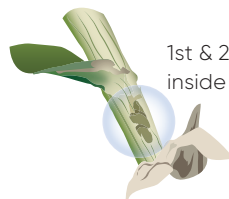
ABW Lifecycle and Seasonal Progression

(Timing for NY Metropolitan Area)

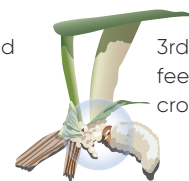
*Consult with your local distributor, university contact and/or Corteva Agriscience representative for recommended timings in your area



ABW LARVAE STAGES CONTROLLED
1st - 5th Instar



1st & 2nd instar feed inside the plant



3rd-5th instar feed on the crown of the turf

Source: Koppenhöfer A.M., Alm S.R., McGraw B.A., Swier S., Vittum P.J. 2012. Managing pyrethroid-susceptible annual bluegrass weevil. Golf Course Management, April 2012, 104-110.

Recommended ABW Larvae Program

Generation	Product	IRAC Group	Rate	Comments
1st	MatchPoint®	5	16 oz./A	
2nd				
3rd	MatchPoint	5	16 oz./A	

MatchPoint® insecticide Packaging



MatchPoint® insecticide comes in 64 oz. bottles. A measuring device is included in a case of 4 bottles.

Sources:

¹www.greencastonline.com

²http://www.fluoridealert.org/wp-content/pesticides/msds/indoxacarb.technical.bulletin.steward.pdf

³https://icl-sf.com/uploads/UK/General_Downloads/Turf%20and%20Amenity/Acelepryn%20Q%20and%20A.pdf

⁴www.bayer.us

⁵www.controlsolutions.com

Product	MatchPoint®	Ference ³	Tetrino ⁴	Provaunt WDG ^{1,2}	Acelepryn ^{1,3}	Suprado ⁵	
Manufacturer	Corteva Agriscience	Syngenta	Bayer	Syngenta	Syngenta	Quali-Pro	
Formulation	WDG	SC	SC	WDG	SC	SC	
Active Ingredient	Spinosad	Cyantraniliprole	Tetraniliprole	Indoxacarb	Chlorantraniliprole	Novaluron	
IRAC Group	5						
	15					x	
	22			x			
	28		x		x		
Sub-Group	Spinosyns	Diamides	Diamides	Oxadiazine	Diamides	Benzoylureas	
Mode of Action	Nicotinic acetylcholine receptor allosteric activator - Site 1	Ryanodine receptor modulator	Ryanodine receptor modulator	Voltage-dependent sodium channel blockers	Ryanodine receptor modulator	Chitin synthesis inhibitor	
	Contact Activity	x	x			x	
	Ingestion Activity	x	x	x	x	x	
	Systemic Activity	x	x		x		
Translaminar Activity	x	x	x			x	
Characteristics of Treated ABW	Stops feeding immediately with death occurring hours to days later	Stops larvae turf-feeding damage within minutes after ingestion; larvae die within hours to days, depending on insect life stage and species	Tetrino is shown to cause immediate cessation of insect feeding following exposure	Stops feeding within minutes, rapidly reducing feeding damage. Once feeding stops, mortality typically occurs within 48 hours	Stops larvae turf-feeding damage within minutes after ingestion; larvae die within hours to days, depending on insect life stage and species	Suprado should not be expected to provide a rapid, knock-down effect. IGRs such as Suprado do not kill immature susceptible insects until the next time they molt. Due to this, it may be necessary to wait several days or weeks to accurately evaluate Suprado's efficacy, depending on target species life cycle and growth stages present.	
	Rate/Acre	16-18 oz.	12-20 fl. oz.	18 oz.	12-20 fl. oz.	96-128 fl. oz.	
	Max Use Rate/Year	≤ 6 apps/yr.	32 fl. oz.	64 fl. oz.	36 oz.	38.3 fl. oz.	294.4 fl. oz.
	Signal Word	Caution	None	Caution	Caution	None	Caution
Larval Stages Controlled (Instars)	1 to 3	x	x		x	x	
	4 to 5	x	x	x		x	
Water Recommendations	Amount	0.10" - 0.15"	N/A	0.05" - 0.10"	N/A	0.10"	
	Timing	w/in 24 hrs.	N/A	Immediately	N/A	Immediately	
PPE	Long sleeve shirt, long pants, shoes plus socks, gloves	Long sleeve shirt, long pants, shoes plus socks	Long sleeve shirt, long pants, shoes plus socks, chemical resistant gloves	Long sleeve shirt, long pants, shoes plus socks, waterproof gloves	Long sleeve shirt, long pants, shoes plus socks	Long sleeve shirt, long pants, shoes plus socks	
Recommended Water pH	6 to 9	Up to 9	N/A	Stable under a wide range of pH conditions	Buffered across a very wide pH range	N/A	
Packaging	4 lb. container	96 fl. oz. container	1 gal. container	72 oz. bottle	64 fl. oz. bottle	1 gal. container	
Case Size	4 x 4 lb.	2 x 96 fl. oz.	4 x 1 gal.	4 x 72 oz.	4 x 64 fl. oz.	2 x 1 gal.	
Mobility (Koc)	500-2000	241	195-252	avg. 4500	115-543	N/A	

Koc value: Describes the tendency of a pesticide to bind to soil particles. The higher the Koc, the greater the sorption potential meaning it does not move in the soil.