



**47th Annual Conference
March 22, 2025
Seton Hall University**

Welcome to the annual conference of the New Jersey College English Association. We are delighted to have you with us.

Schedule at a Glance:

8:15 – 9:00 Sign in; breakfast, Jubilee Hall Atrium, 4th floor

9:00 – 10:00 Keynote Address, Jubilee Hall Atrium, 4th floor

10:15 – 11:45 Concurrent Sessions A

12:00 – 12:45 Lunch and Business Meeting, Jubilee Hall Atrium, 4th floor

1:00 – 2:30 Concurrent Sessions B

2:45 – 4:15 Concurrent Sessions C

4:30 pm Awards and Prize drawing, Jubilee Hall Atrium, 4th floor

All sessions take place in Jubilee Hall.

Health and Safety Measures:

Masks are welcome, but not required.

Refreshments:

A continental breakfast will be available until 10:30am in the 4th floor Atrium.

A hot lunch will be served at noon. Please contact Lisa Sisler (lsisler@kean.edu) if you have any specific dietary needs. Breakfast and lunch will include vegetarian and vegan options.

Coffee and tea will be available throughout the day in the Atrium.

Connect to SHU-Guest Wi-Fi

Alumni, visitors, and guests on campus should connect to **SHU-Guest**. In order to use the guest Wi-Fi network, users must provide a mobile phone number in order to receive a text message verification code. Upon activation, access is enabled for 24 hours.

1. In your device's network settings, connect to **SHU-Guest**.
2. Your web browser will load the guest sign-in page. Enter your mobile phone number and select **continue**.

3. An authentication code will be sent via text message to your mobile phone number.
4. Open your web browser and enter the authentication code, accept the terms of the Appropriate Use Policy, and select **Sign In**. <https://setonhall.atlassian.net/wiki/x/B4Dxf>

Wireless Projection with AirMedia

AirMedia is the application needed to use the wireless projection system found in all of the labs and classrooms on the South Orange campus. **Directions can be found following the schedule below.**

DETAILED CONFERENCE SCHEDULE

8:15 – 9:00 am

Registration/Breakfast

Jubilee Hall Atrium, 4th floor

9:00 – 10:00 am

Jubilee Hall Atrium, 4th floor

Welcome: Jonathan Farina, Interim Dean of the College of Arts and Sciences

Speaker Introduction: Lisa Sisler, NJCEA President

Keynote: Roberto Carlos Garcia: “Notes on Another Talk to Teachers”

SESSIONS

10:15 - 11:45am Concurrent Sessions A

Panel 1: From BCE to 2025: Connecting, Reevaluating, Responding to Works in World Literature, Jubilee Hall 220

Chair: Dena Arguelles, Kean University

Nira Gupta-Casale, Kean University

Shannon Case, Kean University

Andrew Rimby, Kean University

William Arguelles, CUNY

Panel 2: Women in Literature I, Jubilee Hall 221

Chair: John Wargacki, Seton Hall University

“Beautiful Little Accessories: The Objectification of Daisy Buchanan and Myrtle Wilson,”

Jessica McKenzie, Seton Hall University

“Cars, ‘Rotten Drivers,’ and the American Dream in *The Great Gatsby*,” John Gruesser, Kean University

“‘Excited Indecency’: Margaret Widdemer’s ‘The Congregation’ as Fiction and Fictionalization,” Stanley S. Blair, Monmouth University

Panel 3: Creative Writing I Jubilee Hall 132

Chair: Abriana Jette, Kean University

Michael O'Hara, Kean University

Emily Preziose, Kean University

Maya Ostfeld, Kean University

Jason Norton, Kean University

Panel 4: Digital Projects and the Public Facing Humanities Jubilee Hall 223

Chair: Mary Balkun, Seton Hall University

“Ode: A Novel in Progress,” Carter Bryant, Seton Hall University

“Moon Poetry,” Blake Harsch, Seton Hall University

“The Merit of Serrailier,” Julia Lomonte, Seton Hall University

“The Silmarillion’s Environment,” Elizabeth Turrello, Seton Hall University

Panel 5: Tutoring at Seton Hall: Issues of Tutoring and Administering a post-Covid, Hybrid, AI -infused College Writing Center, Jubilee Hall 218

Co-chairs: Arundhati Sanyal and Melinda Papaccio, Seton Hall University

Joseph Brennan, Seton Hall University

Jack Boucher, Seton Hall University

Alyssa M Castello, Seton Hall University

12:00 – 12:45pm

Lunch and Business Meeting Jubilee Hall Atrium, 4th Floor

Announcements

1:00 – 2:30pm Concurrent Sessions B

Panel 1: Navigating the Ethos of Trauma in Literature Jubilee Hall 220

Chair: Lisa Sisler, Kean University

“Writing Trauma in Polarized Times,” Lisa Sisler, Kean University

“Breathing and Writing: fostering a sense of calmness through writing & mindfulness,” Christina Mastroeni, Kean University

“Inherited Trauma as Educational Barrier in Elena Ferrante’s *L’amore molesto* (Troubling Love),” Lewis Livesay, Hudson County Community College

**Panel 2: The Energized Classroom: Teaching Techniques to Engage Students
Jubilee Hall 221**

Tamara Hart, Kean University

Melissa Libbey, Kean University

Abriana Jette, Kean University

Panel 3: Creative Writing II Jubilee Hall 132

Chair: Russell Sbriglia, Seton Hall University

Julia Lomonte, Seton Hall University

Blake Harrsch, Seton Hall University

Shardai Smith, Independent Scholar

Carter Bryant, Seton Hall University

Panel 4: Balancing Innovative Technologies in the Classroom Jubilee Hall 218

Chair: Kelly Shea, Seton Hall University

“Balancing Innovation and Integrity: Strategies for Ethical AI Engagement in the Writing Classroom,” Megan Kane, Seton Hall University

“Locked-In Learning: Honorlock and Surveillance Capitalism in the First Year Writing Department,” Tehyah Carver, Seton Hall University

“What Big Data and AI Cannot Know/Do/Be,” Dean Casale, Kean University

Panel 5: Writing Studies and Media Literacy Jubilee Hall 223

Chair: Rachael Warmington, Seton Hall University

“From Clickbait to Credible: A Practical Approach to Analyze Sources and Enhance Media Literacy,” Jessica Gicking-Aspden, Rowan College at Burlington County

“In Defense of Reason(s): Critical Digital Fluencies, Writing Studies, and the Importance of Explaining Why,” Chris Friend, Kean University

“Writing Studies and Applied Linguistics: Coming to Terms across Polarized Disciplines,” Kristen di Gennaro and Meaghan Brewer, Pace University

2:45 – 4:15 pm Concurrent Sessions C

Panel 1: New Approaches to Medieval Literature Jubilee Hall 220

Chair: Angela Weisl, Seton Hall University

“*Frenish Fare* and English Draft: Mrs. Noah’s Medieval Conviviality,” Susan Nakley, St. Joseph’s University

“Criseyde Has a Great Day Every Day, Troilus Only Has a Great Day When Criseyde Looks at Him: Feminine Space and Autonomy in *Troilus and Criseyde*,” Mallory Warner, Seton Hall University

“The Matters of Today: Expanding Voices in Arthurian Adaptations,” Rachael Warmington, Seton Hall University

“Mythos and Meaning: Medieval Appropriations,” Frank Hunter, Seton Hall University

Panel 2: Dark American Literature Jubilee Hall 221

Chair: John Gruesser, Kean University

“‘I rather chuse to Dye than to live’: Mary Dyer and Martyrdom in Puritan New England,” Mary Balkun, Seton Hall University

“Love at First Shriek: Voice as Love Object in Herman Melville’s *Pierre; or, The Ambiguities*,” Russell Sbriglia, Seton Hall University

“Examining the ‘Totality’ of Africanist Symbolism in Edgar Allan Poe’s Fiction,” J.R. Rizzo, Seton Hall University

“A Structuralist Reading of Race, Identity and Power in *Invisible Man*,” Emily Nix, Independent Scholar

“Clash ‘of mighty opposites’: Progressive Parables in Stephen King’s Epics: *The Stand* and *It*,” John Wargacki, Seton Hall University

Panel 3: Women in Literature II Jubilee Hall 218

Chair: Lisa Sisler, Kean University

“Weaving in the Ends: Analyzing Knitting as a Symbol in *To the Lighthouse*,” Samantha Klein,
Seton Hall University

“Women as the Oppressed and the Oppressor in *The Tempest*,” Erin Kostic, Seton Hall
University

“‘It’s Not a Phase, Mom!’: A Coming of Age in Patriarchal England *Evelina* and Northanger
Abbey,” Abigail Chandler, Seton Hall University

Panel 4: Pedagogies for Divisive Times Jubilee Hall 223

Chair: Andrew Rimby, Kean University

“The Literary Playlist: A Soundtrack Assignment for Critical Engagement with Literature and
Social Issues,” Maureen Daniels, St John’s University

“Teaching Local History: African Americans in the West Fields,” Susannah Chewning, Union
County College

“Teaching Black American Literature in a Divisive Society,” Amanda Stevens, Idaho State
University

4:30 pm Awards and Prize Drawing Jubilee Hall Atrium, 4th floor

Rosen Award

Graduate Student Essay Award and Graduate Student Creative Writing Award

Prize Drawing

W.W. Norton has graciously donated a Kindle for our end-of-conference prize drawing. You must be present to win. Open to all registered attendees, except NJCEA Board members.

Projection Directions for Crestron AirMedia

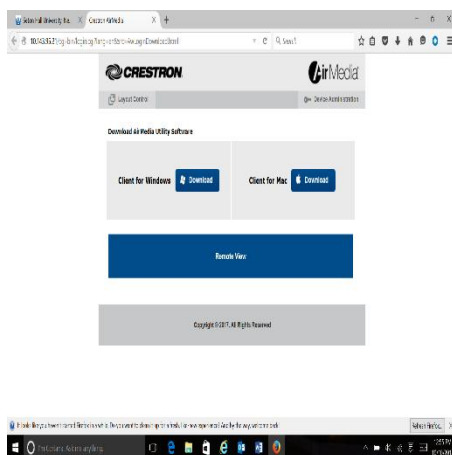
AirMedia is a wireless presentation device available in various classrooms and meeting spaces on campus. AirMedia enables students, faculty, and staff to connect instantly and share materials wirelessly to a projector or screen. In order to use AirMedia, users must [connect to the campus Wi-Fi network](#).

1. Locate the projector control panel in the room, press the On button to power on the projector and select Wireless Display.
2. If you already have the AirMedia app, skip to step #4.

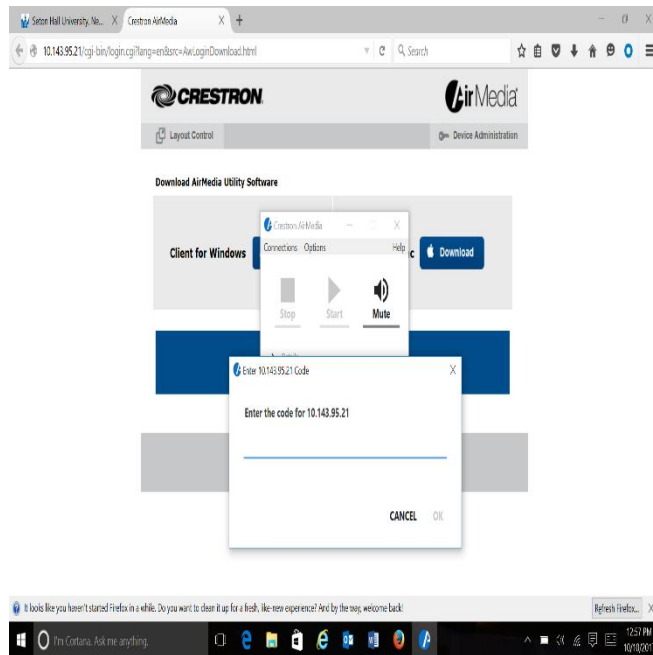
Open a web browser and type the IP address displayed on the top of the projector screen.



3. If you do not already have AirMedia installed, you may be prompted to download the app.



4. Open the AirMedia app, enter the code, as displayed on the projector screen in the room, and select Connect.



5. Press the Start and Stop button to start or stop sharing to the display in the room.