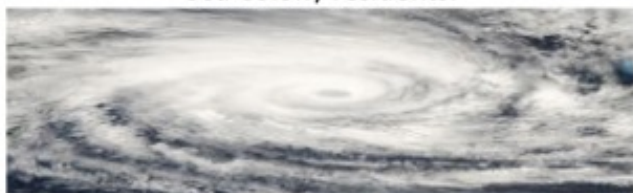


Sea Colony Disaster Planning

Please refer to the Sea Colony Website, <http://seacolony.homes> and select the Disaster Prep page for links and resources prepared specifically for Sea Colony residents.



Before the Emergency

Create an Emergency Supply Kit and "Go Bag"

Make a Plan – Share it with family and friends

Be Informed – Connect with **ALERT**Flagler

Review the Flagler County Disaster Preparedness Guide

Get Involved – We're Neighbors helping Neighbors

Have an Evacuation Plan – Know your zone: A

Review the 5 P's for evacuation:

- *People / Pets
- *Prescriptions
- *Personal Needs
- * Papers (Legal / Insurance)
- *Priceless Items



Preparing Your Property

1. Secure outdoor furniture and items
2. Trim trees of dead branches
3. Secure outside of home:
 - Sandbags to minimize flooding
 - Protect windows and glass doors
 - Reinforce garage door
 - Deadbolts and bracing for exterior doors
4. Prepare for power outages
 - Unplug appliances not in use
 - Turn off breakers for unused circuits
 - Turn refrigerator/freezer to coldest setting
 - Limit opening refrigerator / freezer during outage
 - Review Generator Safety Procedures before use
5. Prepare inside of home
 - Fill bathtub with water for flushing and hygiene
 - Turn off water
 - Place sandbags over ground-floor drains
 - Create a home inventory – List and photos/video
 - Secure important documents and items:
Legal, Photos, Family Heirlooms, Medications, etc.



Flagler County Emergency Management

www.flaglercounty.org/emergency

Facebook.com/flaglereoc

Phone: (386) 313-4200

- Sign up for **ALERT**Flagler notifications
- Register early for Special Needs Shelter / transport

Shelters

- Supplies at shelters are limited. Be sure to bring your Disaster Supply / Evacuation Kits to the shelter, including your medications and personal items.
- Social distancing at shelters is a challenge. Be prepared for it and bring a face covering, as well as a spare.

Shelters are pet-friendly, which means that crated pets are allowed to be sheltered in a pet area, not necessarily alongside their owners.

Pet owners must provide:

- Government-issued picture ID & proof of residency within an evacuation zone
- Current health / vaccine records for each pet
- Supplies for themselves and their pet(s), including food, medicines, crates / cages, and comfort items
- Owners must remain at the shelter and be prepared to provide care and control for their pet(s)



Please review the Flagler County Disaster Preparedness Guide for additional relevant information and guidance, including:

- Tips on creating a Family Disaster Plan
- Creating a Disaster Supply Kit
- Supplies for evacuation and sheltering
- Safety steps for residents before, during and after the emergency