

CENTER FOR VICTIMS OF SEXUAL AND DOMESTIC VIOLENCE

Creation / Renovation

WAITING ROOM (AKA "THE FISHBOWL")

Entrance to
Advocate Offices



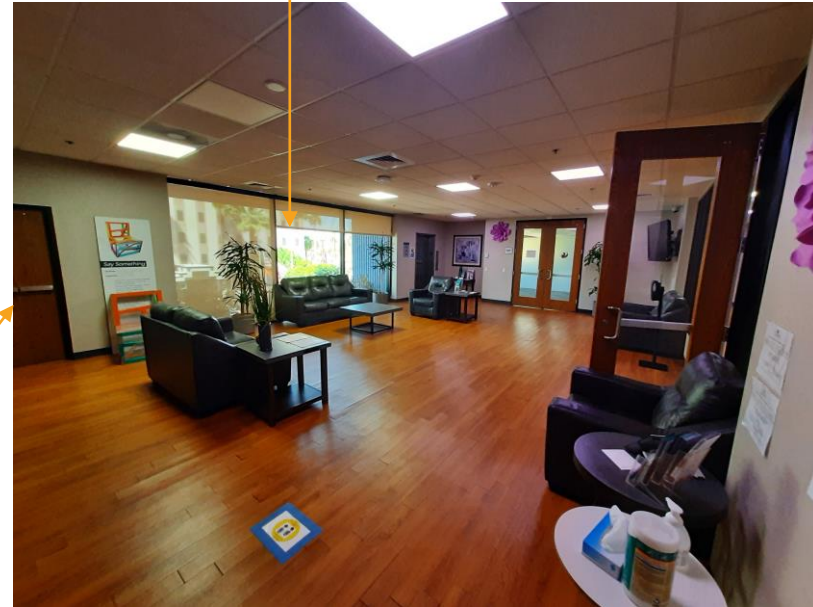
Public Elevator

Large Training
Room

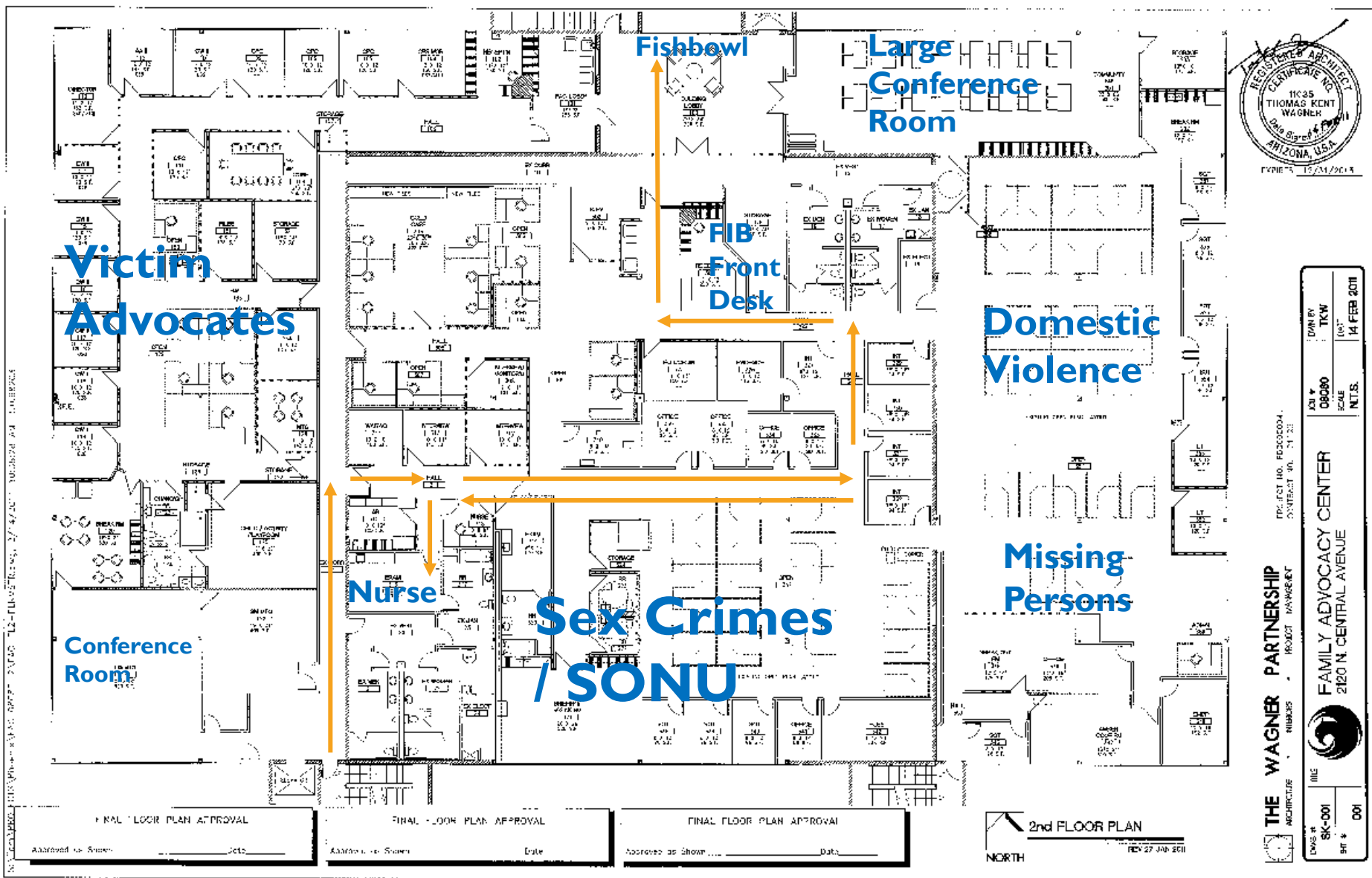
Public Stairs

Entrance to FIB

Large Windows



THE “VICTIM WALK”



PROJECT NO. 080804
 CONTRACT NO. 01-102

FINAL FLOOR PLAN APPROVAL
 Approved as Shown _____ Date _____
 Approved as Shown _____ Date _____
 Approved as Shown _____ Date _____

2nd FLOOR PLAN
 REV 27 JAN 2011
 NORTH

THE WAGNER PARTNERSHIP
 ARCHITECTURE PROJECT MANAGEMENT

PROJECT NO. 080804
 CONTRACT NO. 01-102

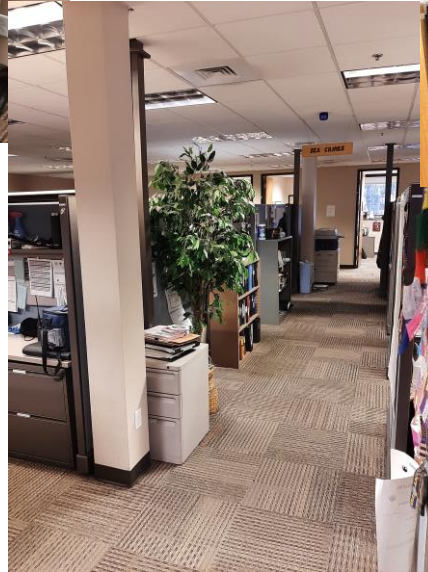
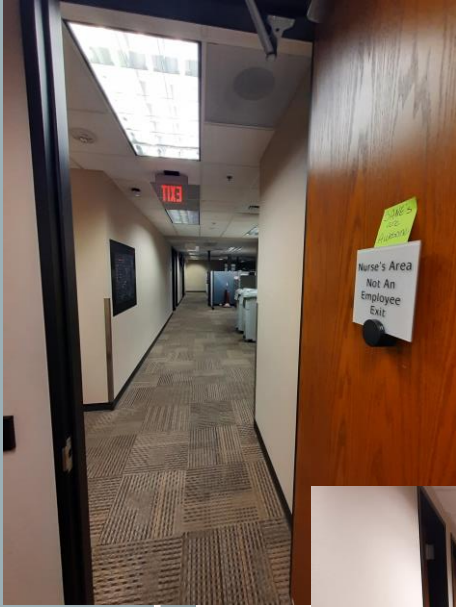
DRAWN BY: TKW
 DATE: 14 FEB 2011

SCALE: N.T.S.

SHEET NO. SK-001 OF 001

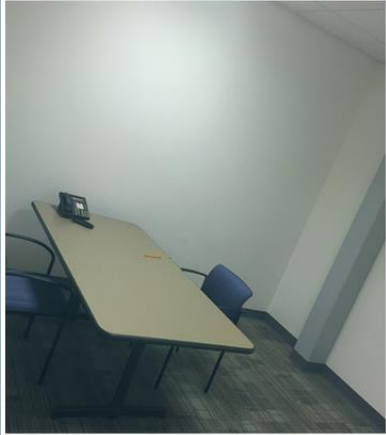
FAMILY ADVOCACY CENTER
 2120 N. CENTRAL AVENUE

VICTIM WALK



RENOVATED FAMILY ADVOCACY CENTERS

Arizona State University Police Department
2016



City of Maricopa Family Advocacy Center
2019



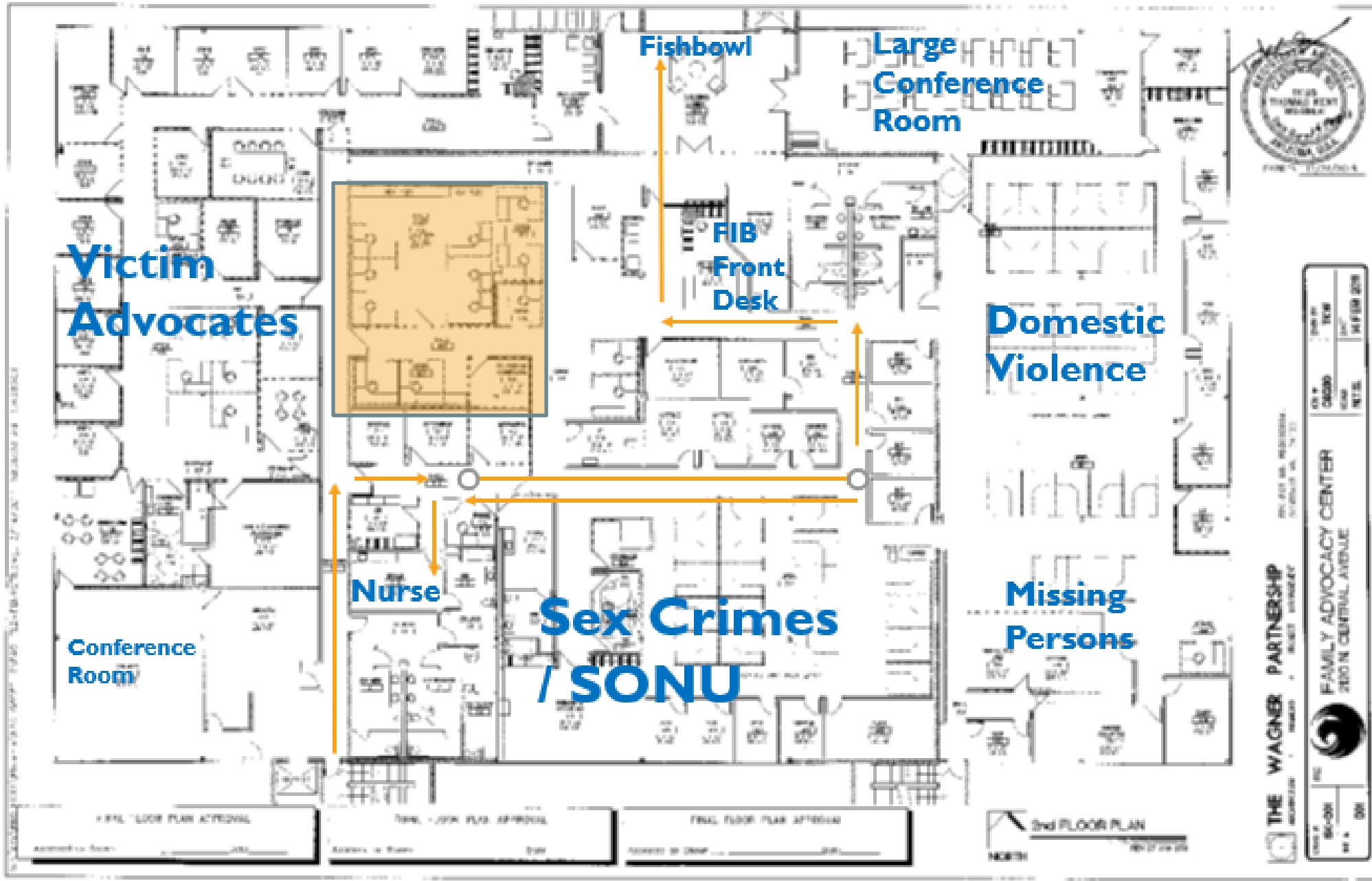
Mesa Family Advocacy Center
2016



VICTIM CENTER CREATION

CURRENT SPACE

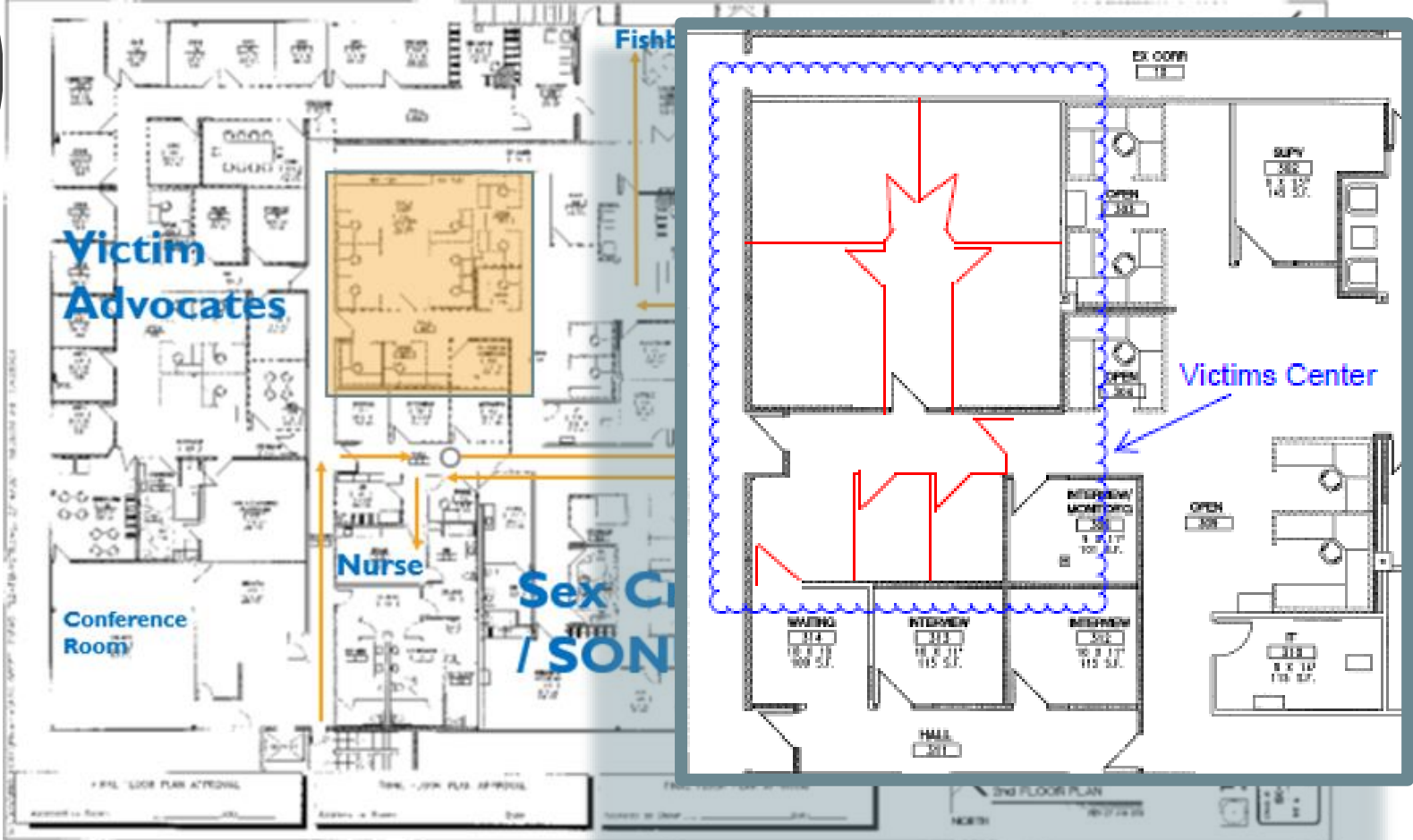




THE WAGNER PARTNERSHIP
 2000 N. CENTRAL AVENUE
 SUITE 200
 TAMPA, FL 33606

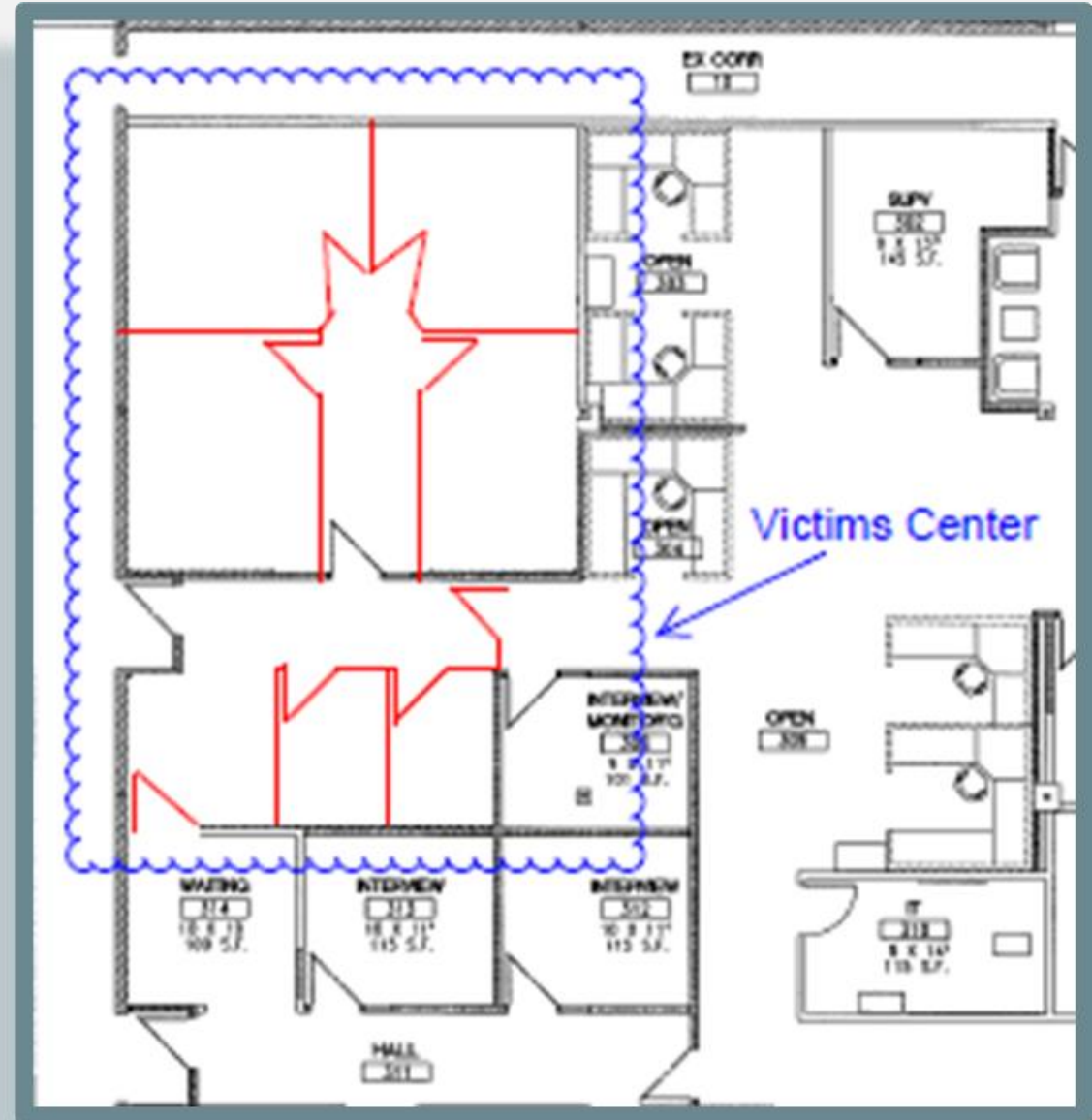
THE WAGNER PARTNERSHIP 2000 N. CENTRAL AVENUE SUITE 200 TAMPA, FL 33606	FAMILY ADVOCACY CENTER 2000 N. CENTRAL AVENUE TAMPA, FL 33606

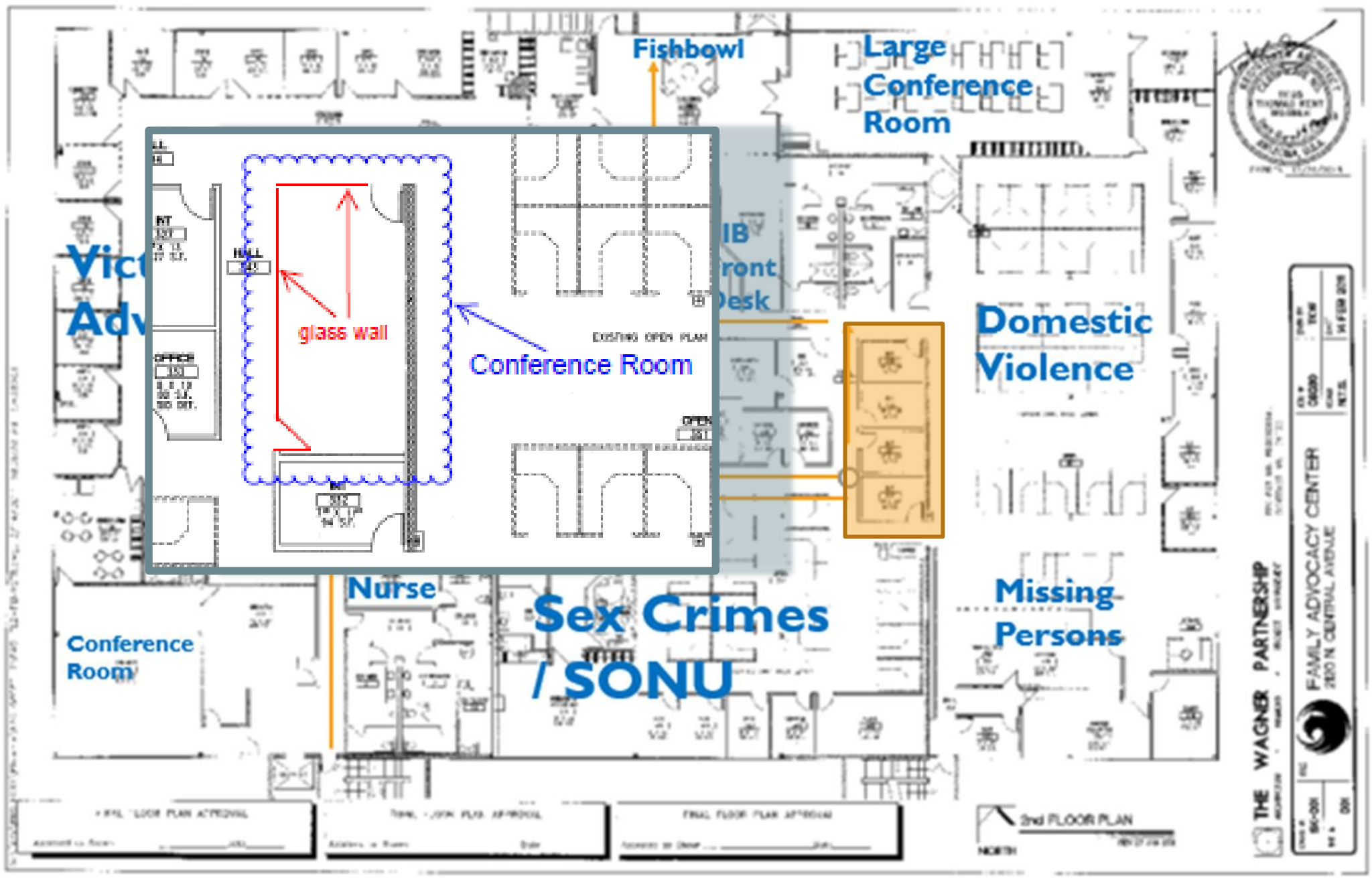
FIB 2ND
FLOOR



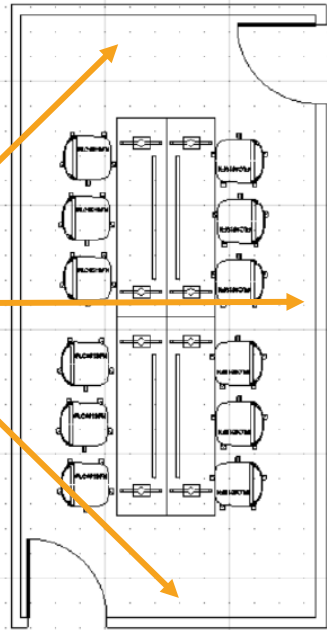
VICTIM CENTER

- Create 4 interview rooms
 - One is flex space, mainly an officer workspace
- Create 2 private waiting rooms
- Secure door to/from Nurse's Area
- Video surveillance
- Alert lighting system

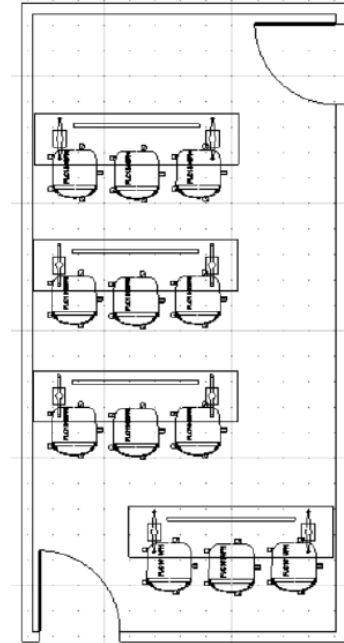
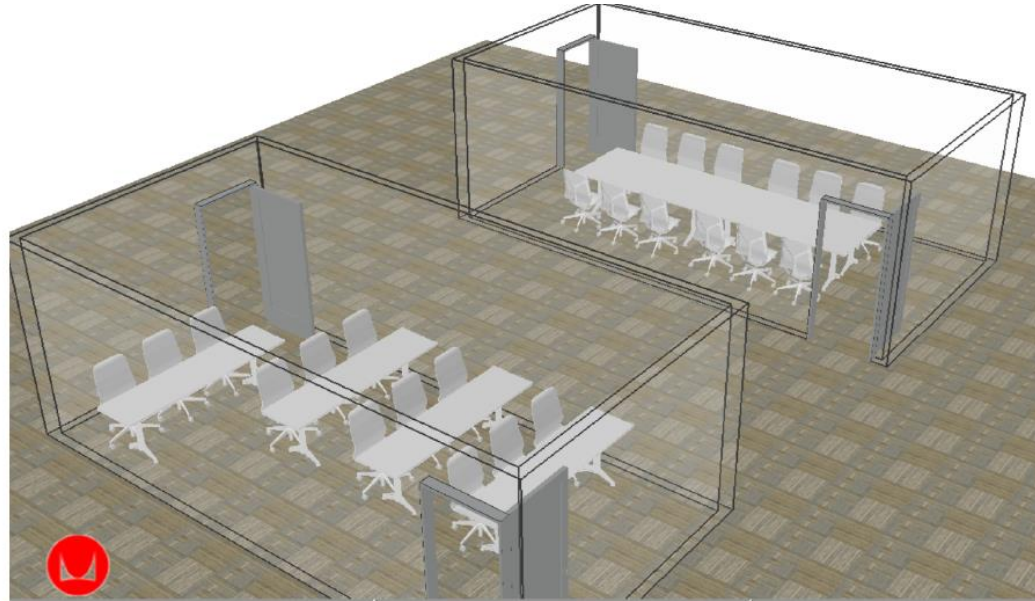




**Glass
Walls**

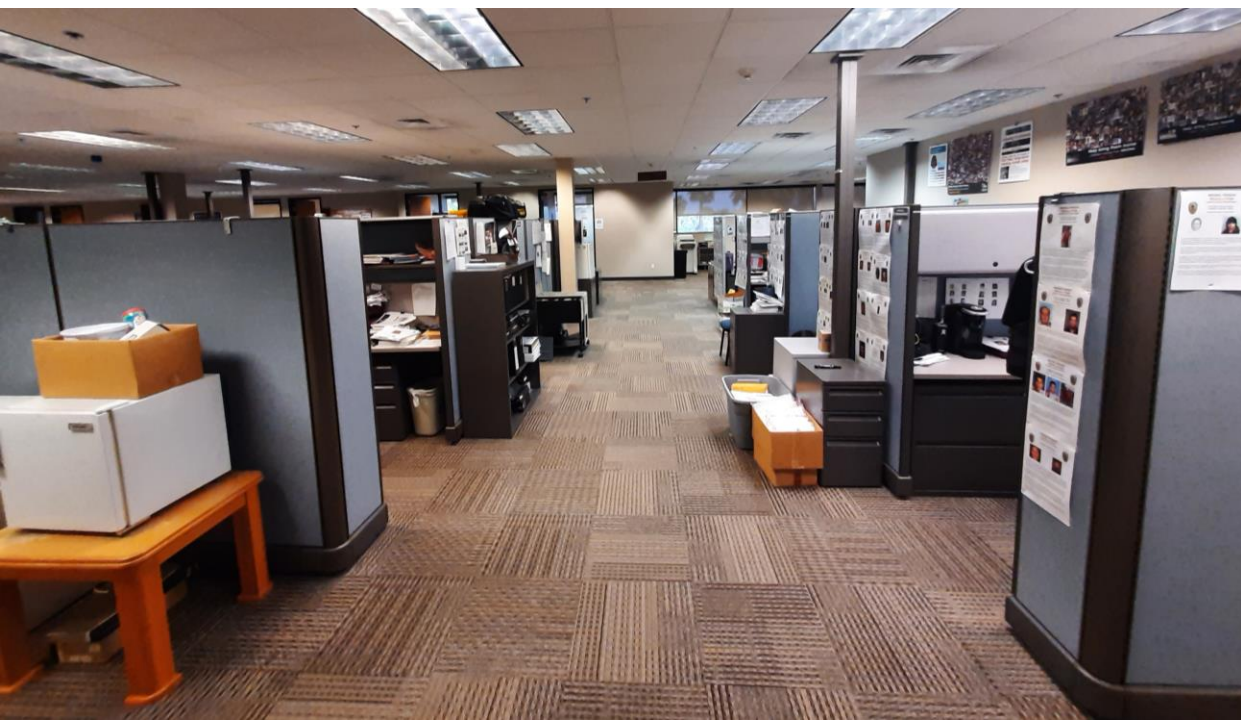
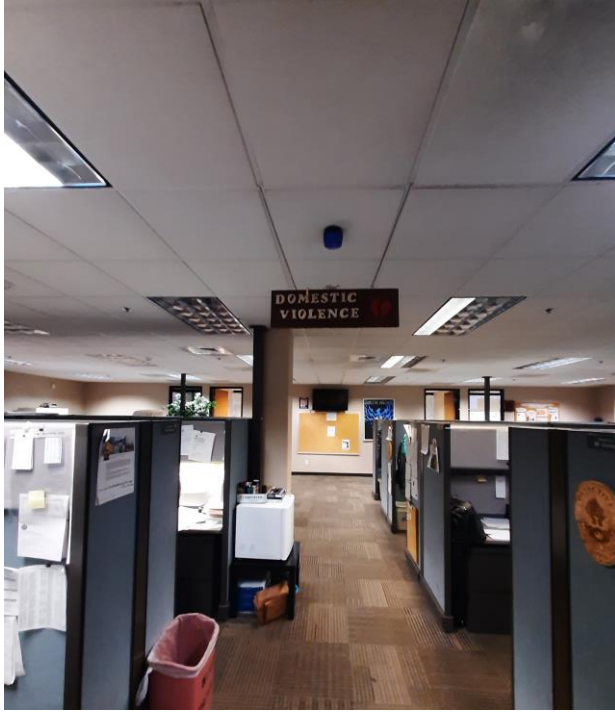
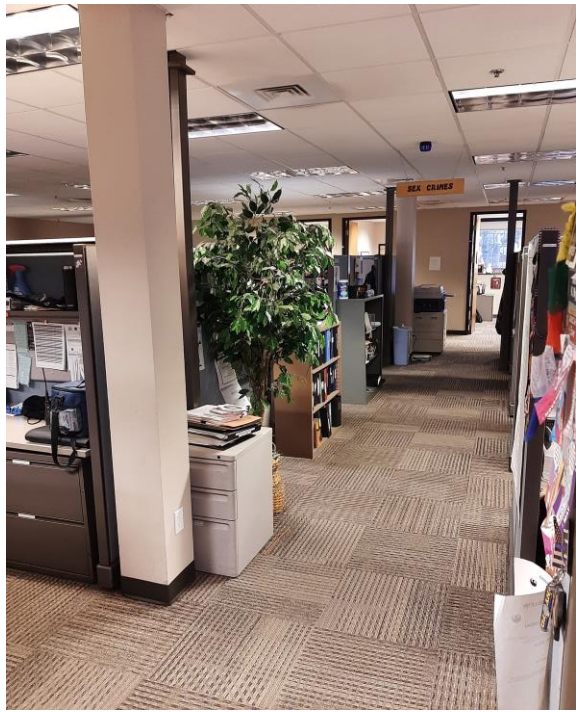


Briefing Rm: Layout 1



Briefing Rm: Layout 2

BRIEFING ROOM (FORMER INTERVIEW ROOMS)

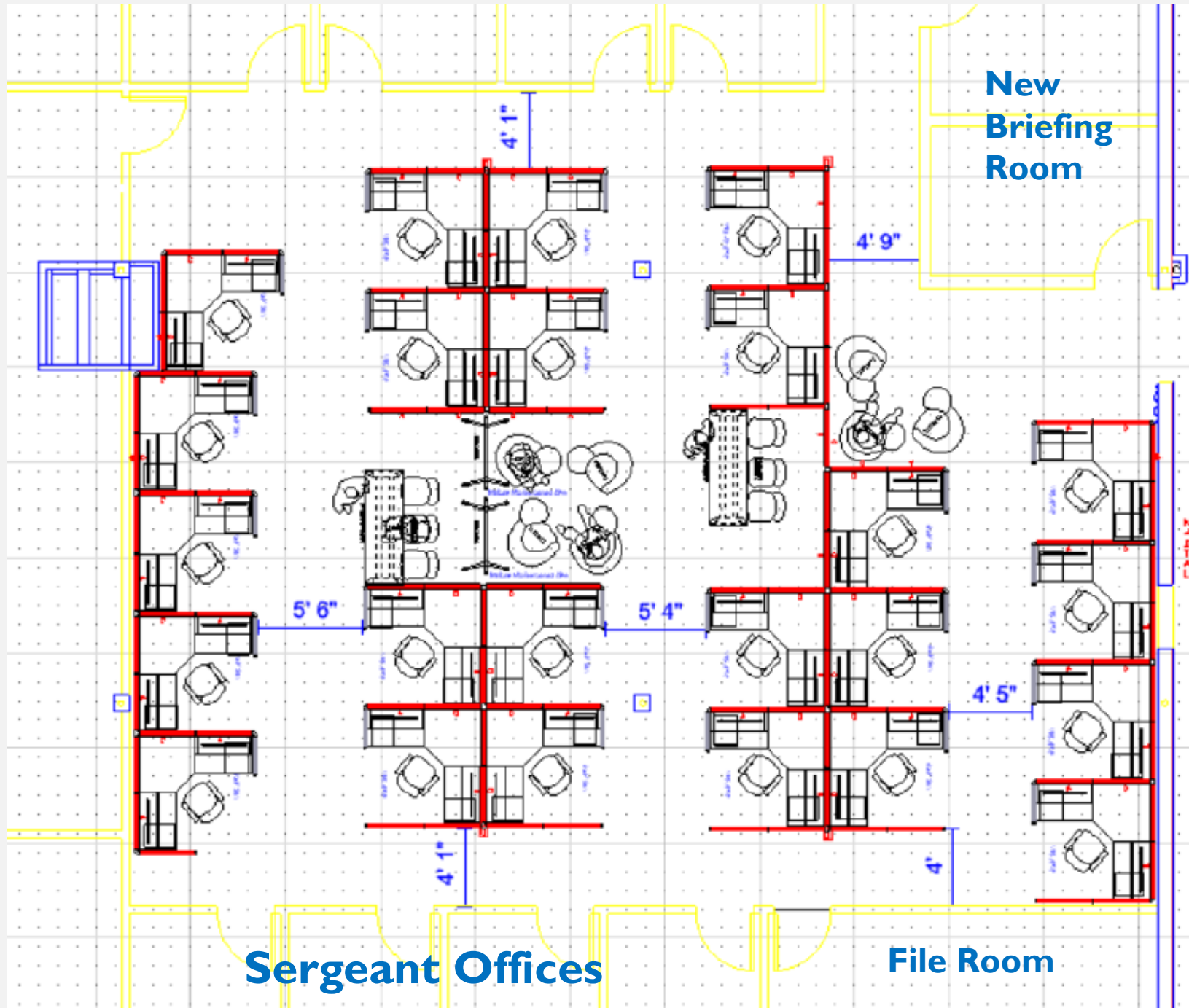


DETECTIVE
WORKSPACE

DETECTIVE WORKSPACE

- Collaborative workspaces
- Standing height communal table with standing space for spontaneous engagement
- Lounge space with mobile chairs with tablet arm features for focused collaboration
- Mobile markerboards for flexible space and serial investigations
- Tackable surfaces in collaborative spaces

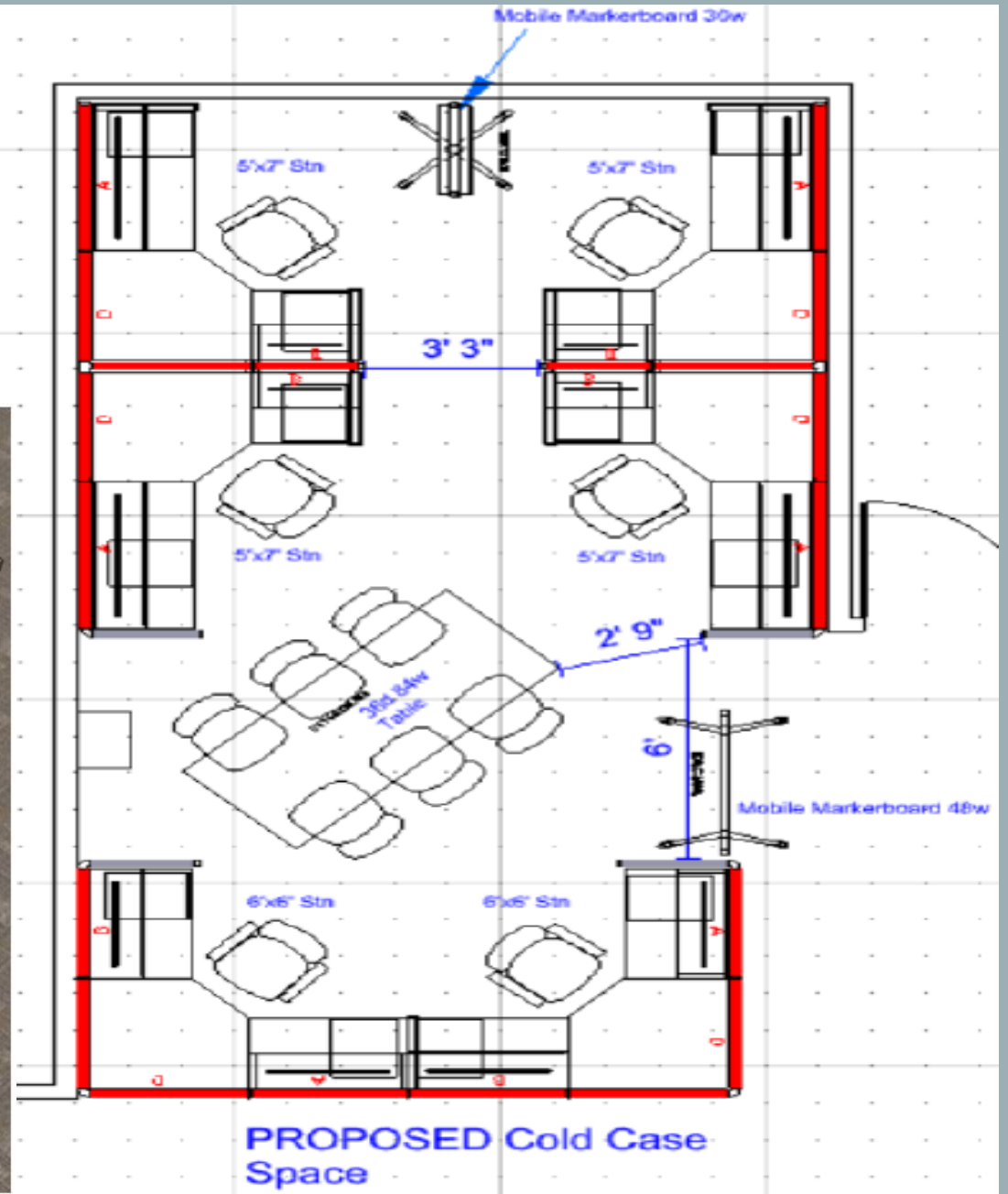






COLD CASE AREA

COLD CASE





KEY POINTS

- Light alert system
- Video surveillance in Victim Center
- Briefing room separate from break room
 - Can be used for meetings with outside partners