

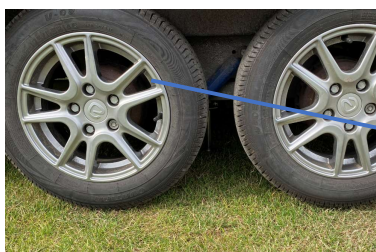
## Compatibility check

*“The purpose of this document is to give potential customers the ability to assess whether the Twin Lift system can be fitted to their caravan”*

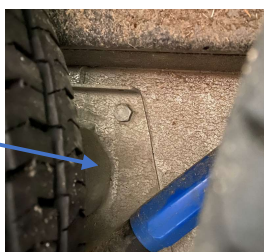
Due to the variation in chassis specifics by OEM's, implementation for the finished caravan by manufacturers and availability to full technical details, it is not possible to determine whether the system can be fitted successfully by caravan model alone. It is also not possible to determine wear or modifications to the caravan which would not make fitting practical or possible. To overcome this issue and avoid unnecessary time, money and frustration for potential customers who either purchase the kit to fit personally or would need to take to an installer for assessment, this guide can be followed to provide an answer.

- 1) Identify the axle manufacturer of your caravan. This can either be done through your caravan handbook or by looking at the profile of the axle tube (Pic 1 & 2). Compatible BPW axles have a square profile and Alko axles have an irregular hexagon profile.

Pic 1

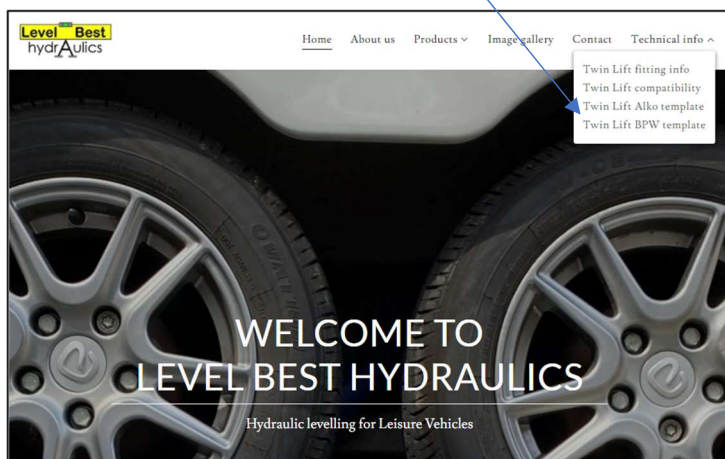


Pic 2



- 2) Download the appropriate axle template from the Level Best Hydraulics website [www.lb-hyd.co.uk](http://www.lb-hyd.co.uk) under the technical info menu (pic 3)

Pic 3

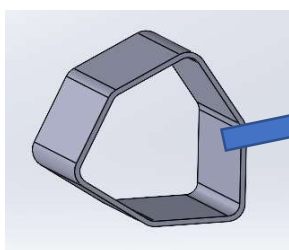




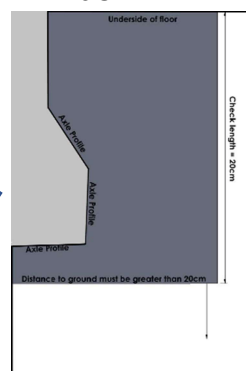
run parallel. If the edge of the template is less than 5mm in contact with the floor (determined by folding the top of the template until there is a slight gap and measuring the fold), this is also OK.

- c. The bottom of the template is 20cm clear of the floor. Some variation here is acceptable but levelling capability will be reduced if measurement is greater than 22cm and ground clearance will be reduced from the design specification if the measurement is less than 20cm
- d. Chassis height to floor is same on nearside (right hand side of the caravan when looking at it from the front) as on offside, to ensure there is no significant suspension degradation etc that would affect ground clearance of actuator (measure from the bottom of the caravan floor to the ground on both sides)

Pic 7

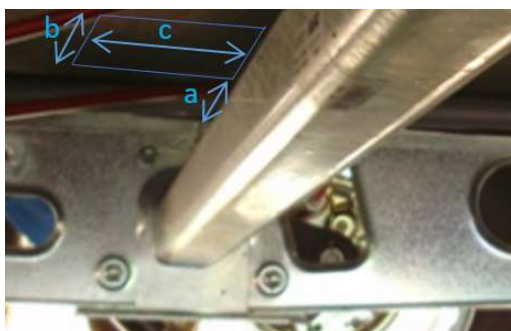


Pic 8



- 9) The final check is for obstructions in the required fitting location of the actuator. The actuator must be fitted within 12.5cm ('a' in pic 9) of the inside of the chassis member (both actuators must be within 2cm of the same distance from the opposite chassis members). A free area on the underside of the floor above the axle, of 13cm ('b' in pic 9) by 20cm ('c' of pic 9) is required. This can be checked by simply looking at the underside of the caravan floor and checking that no cables or pipes fall within the area which would be above the actuator when fitted. It is possible for small electrical cables etc to be slightly re-routed to give the required clear space but moving of gas pipes should not be entertained.

Pic 9



- 10) If there are no issues encountered in the steps above, then Twin Lift should be compatible with your caravan!