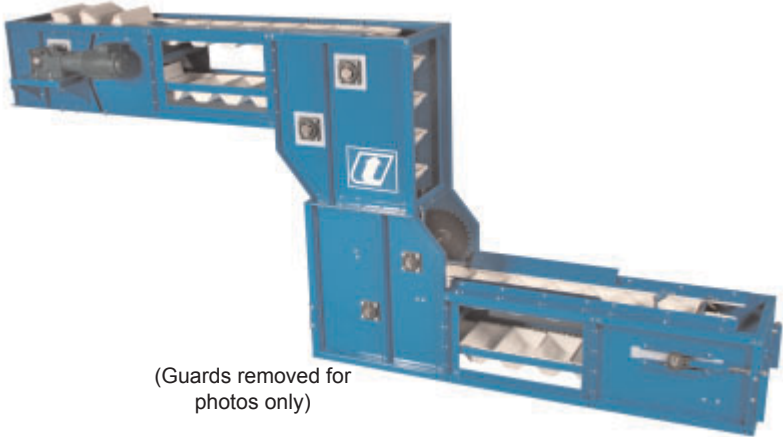




"Z"
DAKOSA™
CONFIGURATION

**BUCKET
ELEVATOR/
CONVEYOR**

*up to 3,800 ft³/h
(107 m³/h)*



(Guards removed for photos only)

Model Series 900	912	918	924
Capacity - Free Flowing Material @ 75% Bucket Fill	700 ft ³ /h 20 m ³ /h	1,050 ft ³ /h 30 m ³ /h	1,400 ft ³ /h 40 m ³ /h
TPH/MTPH @ 50lbs. ft ³	17.5/15.9	26.25/23.9	35/31.8
TPH/MTPH @ 75lbs. ft ³	26.2/23.8	39.4/35.8	52.5/47.7
Buckets (Standard or Divided)	9"x12" 22.86x30.48cm	9"x18" 22.86x45.7cm	9"x24" 22.86x60.96cm
Chain Speed	70 FPM / .3356 M/S		
Headshaft RPM	Consult Factory		
Bucket Spacing	Continuous Bucket Design		
Chain	C 2062		
Construction	Carbon Steel Tubular Frame (Stainless steel optional)		
Drive Package	Included		
Motor	Included		

**THE TRADITION OF
EXCELLENCE CONTINUES!**

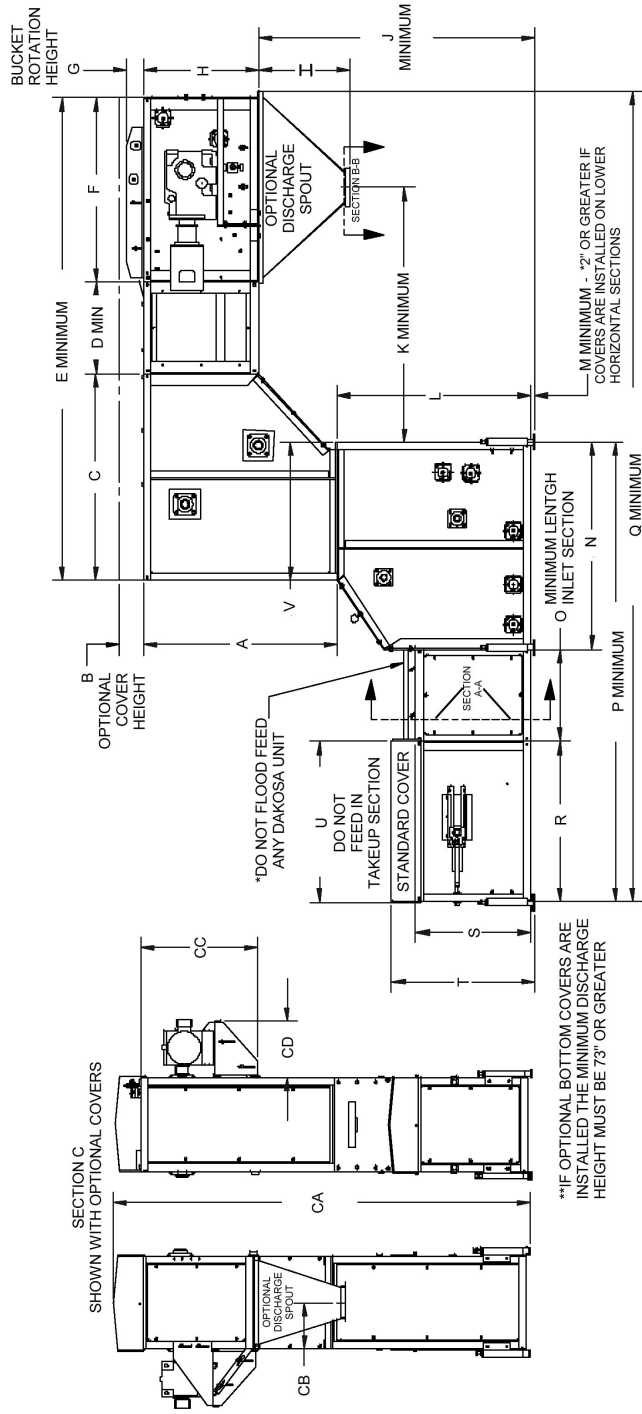
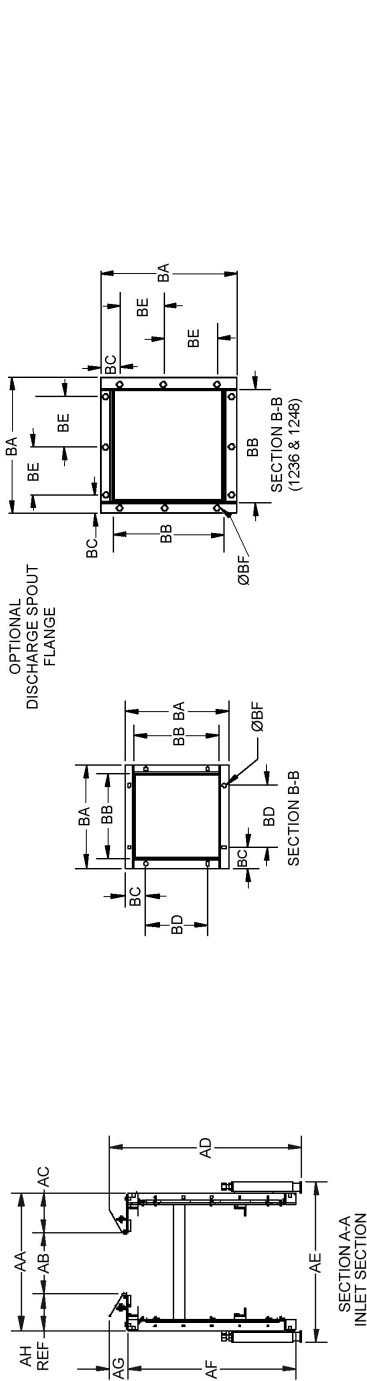
Model Series 1200	1212	1218	1224	1230	1236	1248
Capacity - Free Flowing Material @ 75% Bucket Fill	950 ft ³ /h 27 m ³ /h	1,400 ft ³ /h 40 m ³ /h	1,900 ft ³ /h 54 m ³ /h	2,350ft ³ /h 67 m ³ /h	2,800 ft ³ /h 79 m ³ /h	3,800 ft ³ /h 108 m ³ /h
TPH/MTPH @ 50lbs. ft ³	23.8/21.6	35/31.7	47.5/43.1	58.8/53.3	70/63.5	95/86.2
TPH/MTPH @ 75lbs. ft ³	35.7/32.3	52.5/45.7	71.3/64.6	88.1/79.9	105/95.2	142.5/129.5
Buckets (Standard or Divided)	12"x12" 30.48x30.48cm	12"x18" 30.48x45.7cm	12"x24" 30.48x60.6cm	12"x30" 30.48x76.2cm	12"x36" 30.48x91.44cm	12"x48" 30.48x121.92cm
Chain Speed	70 FPM / .3356 M/S					
Headshaft RPM	Consult Factory					
Bucket Spacing	Continuous Bucket Design					
Chain	C 2082					
Construction	Carbon Steel Tubular Frame (Stainless steel optional)					
Drive Package	Included					
Motor	Included					

****Do NOT FLOOD FEED ANY DAKOSA™**

****PRODUCT DELIVERY RATE MUST BE UNIFORM AND FED EVENLY ACROSS THE WIDTH OF THE BUCKETS**

NOTE: Unit application, location and specifications determine the type, quantity and/or placement of electrical, electrical safety or other safety controls required. Whether these controls are supplied by Universal Industries or another supplier, all OSHA safety and health standards, the National Electrical Code and local codes must be met and followed. *Because we constantly strive to provide the finest material handling equipment, establishing industry standards, specifications must remain subject to change without notice.*

DAKOSA Z CONFIGURATION



MODEL	A	B	C	D	E	F	G	H	I	J	K	L	M	N	O	P	Q	R	S	T	U	V
912																						
918	41	6 23/32	36	18	102	48	3 13/32	23 1/4	24	60	49 11/16	41	1 1/4**	36	24	96	176 13/16	36	23 1/4	30 25/32	36	29
924																						
1212																						
1218																						
1224																						
1236	50 1/2	6 5/16	54	18	120	48	4 1/2	30	24	72	60 5/8	50 1/2	1**	54	24	120	205 3/4	42	30	37 9/32	42	36
1248																						
SECTION A-A	AA	AB	AC	AD	AE	AF	AG	AH	SECTION B-B	BA	BB	BC	BD	BE	BF	SECTION C	CA	CB	CC	CD		
912	23 3/4	10 1/4			28				912							912	11 7/8					
918	29 3/4	16 1/4			34				918							918	14 7/8	22 5/16		14 7/32		
924	35 3/4	22 1/4	7 1/16	27 21/32	40	24 1/2	3 5/32	6 7/16	924	9 7/8	8 1/8	2	5 7/8	3/8	924	89 31/32	17 7/8					
1212	24 7/16	10 15/16			28 11/16				1212							1212	12 1/2	12 1/2				
1218	30 7/16	16 15/16			34 11/16				1218							1218	12 1/8	12 1/8				
1224	36 7/16	22 15/16	7 1/8	34 5/32	40 11/16	30	3 5/32	6 3/8	1224	12 3/4	12 3/4				1224	108 5/16	18 7/32					
1230	42 7/8	29 7/16			46 11/16				1230	12 3/4	12 3/4				1230	123 1/2	30 1/2			14 7/8		
1236	47 3/4	34 3/4			CF				1236	14 5/8	5	2 5/16	--	5	7/16	1236	CF	CF				
1248	58 3/4	46 3/4			CF				1248	12 3/4	12 3/4				1248	124 1/2	CF	CF				