

## QuickConnect-P Installation

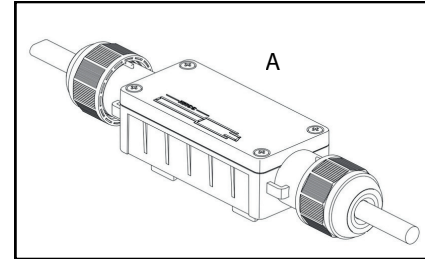
### Description

The QuickConnect connection system is a simple, fast and reliable set of connection kits developed for heating cables. There is no wire stripping needed because the insulation displacement connector makes the electrical connection. The connection kit shall be designed to be installed above the pipe insulation and shall not be immersed in the water.

### Warning

This component is an electrical device that must be installed correctly to ensure proper operation and to prevent shock or fire. Read these important warnings and carefully follow all the installation instructions.

- To minimize the danger of fire from sustained electrical arcing if the heating cable is damaged or improperly installed, and to comply with the requirements of approval testing lab and national electrical codes, ground-fault equipment protection must be used. Arcing may not be stopped by conventional circuit breakers.
- The bus wires will be short if they contact each other. Keep bus wires separated.
- Keep components and heating cable ends dry before and during installation.
- The black heating cable core is conductive and can short. It must be properly insulated and kept dry.
- Leave these instructions to the end user for reference and future use.



### Tools

Utility knife      Wire cutters      Screw driver

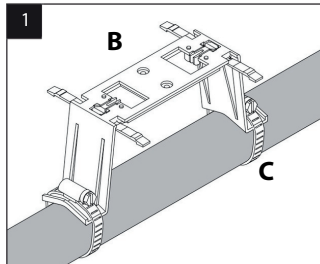
### Materials required for installation

Content	Quantity	Description
A	1	QuickConnect-P
B	1	Pipe mounting bracket
C	2	Pipe strap

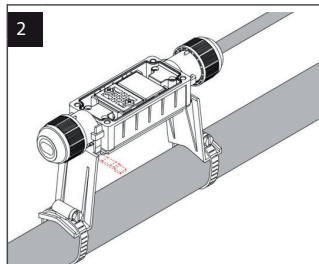
### Specification

- Voltage 110-120V or 208-277V
- Maximum circuit breaker size: 20A
- Minimum installation temperature: -20 °C; (-4°F)
- Maximum exposure temperature: 65°C (150°F)
- IP rating: IP68

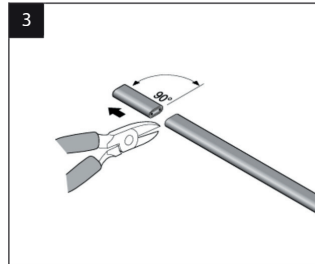
### Installation step



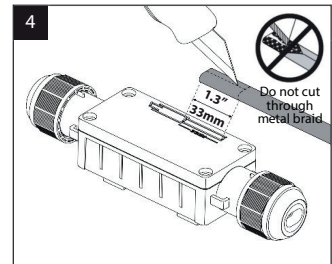
1. Install the bracket on the pipe using two pipe straps (c).



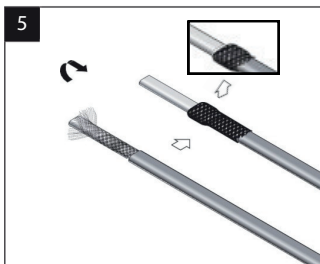
2. Align and insert the four clips of the mounting bracket with the four holes of the quick connector.



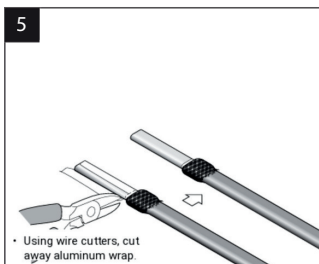
3. Cut heat trace cable to length required. Note: Cut the cable as shown for a clean edge without wire strands.



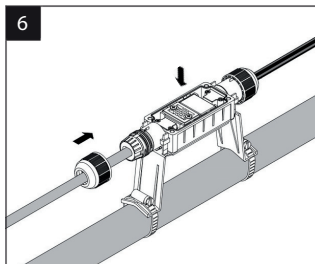
4. Measure 1.3"/33mm (use scale on cover). Lightly score outer jacket around and down as shown and remove the outer jacket.



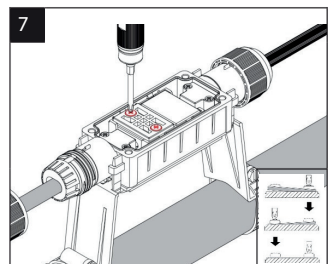
5.1 Push metal braid back over top of heat trace cable and tidy it.



5.2 If the type of heat trace cable being installed has an aluminum inner layer, it must be removed.



6. Insert the prepared heating cable end into the connector through the gland nut and rubber seal and push until the heating cable is fully inserted and the cable is fully visible through all holes in the cable cover plate.



7. Tighten the two screws on the cable cover plate of the connector alternately to ensure the cover is evenly locked.



Warning: Loose screws may cause heating and sparking. Ensure screws are locked to prevent fire hazard.



Note: The connector is designed to be installed only once. The heating cable cannot be removed once installed!

Doc.21311330



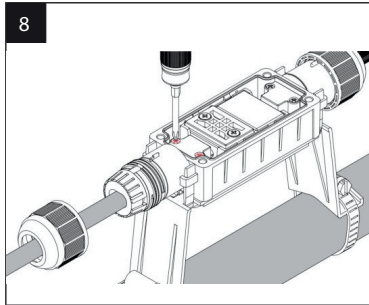
www.power-trace.com



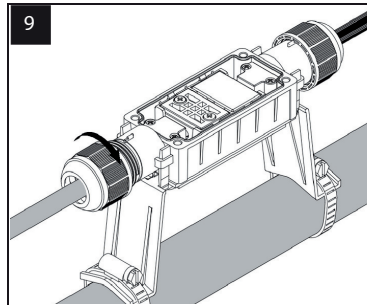
sales@power-trace.com

Sales & Support: 1 (800) 930-8221

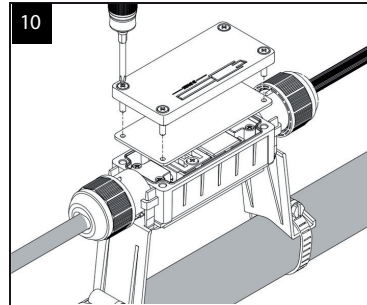
Note: there is a fire hazard. Loose screws may cause heating and sparking. Please ensure that the screws are locked.



8. Tighten the two screws on the fixed cable block alternately to ensure the screws are locked.



9. Tighten the cable gland nuts.



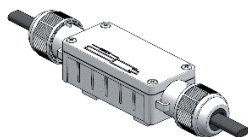
10. After the cable installation is completed, install the cover cover plate and tighten the four screws alternately to ensure that the sealing ring is evenly compressed.

### Troubleshooting guide

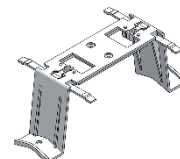
Problem description	Solution
Heating cable cannot be inserted into connector	<p>Check the following:</p> <ol style="list-style-type: none"> <li>1. Verify the length from the end to the cutting point is 1 1/4" 33mm</li> <li>2. The exposed braid should be flat and attached to the outer jacket</li> <li>3. Ensure screws are not tight on cable cover plate. Loosen cable cover plate</li> </ol>
Heating cable cannot be removed	The QuickConnect kits are designed to be installed only once, the heating cable cannot be removed once installed.
The prepared heating cable does not work after connected with QuickConnect connector.	<ol style="list-style-type: none"> <li>1. Check Power</li> <li>2. Check the screws to ensure screws are fully tightened</li> <li>3. Please replace it once failed</li> </ol>

### Related QuickConnect Connection Kits

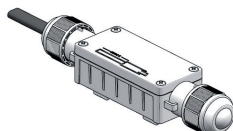
QuickConnect-S



Pipe mounting bracket



QuickConnect-LE



Heat Trace Cable Parameter

