

ELASER

Laser-Cleaning Systems



Product Features

- 200/500-Watt Portable System
- Fiber-Laser Engine
- Compact 2D Scan Head
- Pulse Energy up to 50mJ
- Manufactured in the UK
- Touchscreen Interface
- Low Operating Costs
- Market-Leading Value

Applications

- Weld Seam Preparation
- Post-Weld Cleaning
- Paint and Coating Removal
- Contamination Removal
 - Rust
 - Mill Scale
 - Oil & Carbon
- Mould Cleaning
- Graffiti Removal

Performance and Reliability without the Cost

Laser-cleaning eliminates the need for consumables in surface cleaning processes. Unlike traditional media-blasting, water-jetting and chemical cleaning methods, no water, chemicals or abrasives are required. Laser-cleaning generates minimal waste, no mess and the underlying surface is unaffected by the process.

ELASER portable laser-cleaning systems are unique to the market-place - UK-manufactured, high-quality, performance and reliability, yet priced competitively to drive expansion of laser-cleaning within industrial applications.

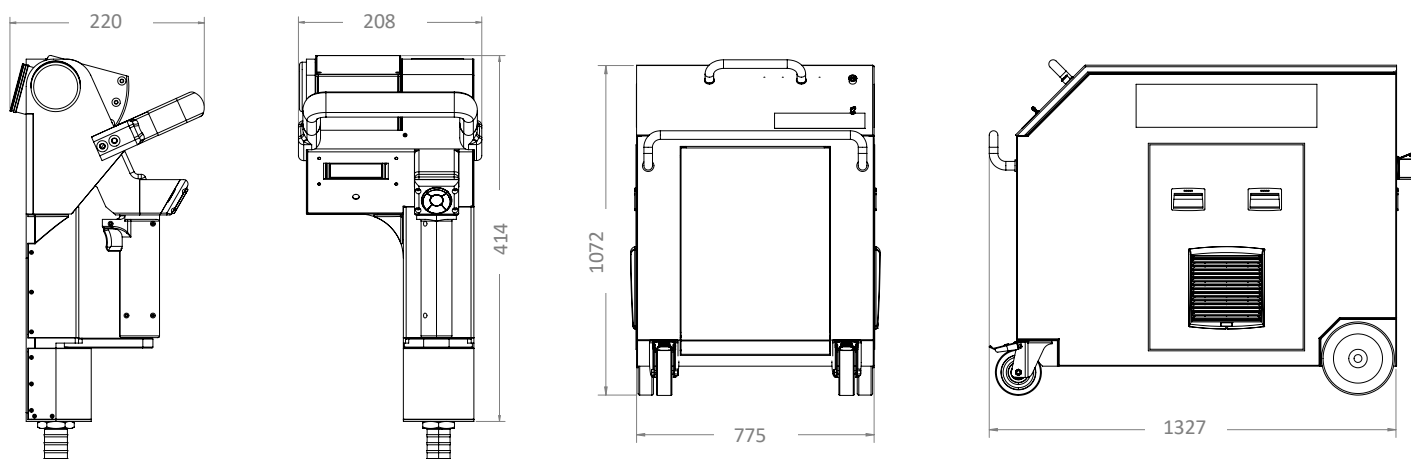
Powered by compact, robust fiber lasers and incorporating a portable, lightweight 2D laser-scanner and intuitive user-interface, ELASER will adapt to optimise any surface-cleaning, surface-preparation or coating-removal application.

ELASER technology will drive down your operating costs, extend lifetime of equipment and parts and enable maximised uptime within manufacturing.

ELASER

	ELASER-200	ELASER-515	ELASER-550
LASER SPECIFICATIONS			
Average Power	200 Watts		500 Watts
Pulse Energy		Up to 15mJ	Up to 50mJ
Pulse duration		100 nsecs	
Wavelength¹		1064nm	
Power Tunability		0 to 100%	
Pulse Repetition Rate		Adjustable 25KHz CW	
HAND-HELD SCANNER and FIBER DELIVERY			
Scanner type		2-D Galvanometer	
Maximum scan rate		10 m/sec	
Scan shapes available		Fully programmable through GUI	
F-Theta Lenses available (working distance)		Interchangeable lenses 75mm up to 500mm	
Lens-protection windows		Included and replaceable	
Standard Cable Length		5m 15m Longer lengths available	
ELECTRICAL, MECHANICAL & INTERFACES			
Supply Voltage		110-250 VAC Single-Phase	
Power Consumption	<750 Watts		<2000 Watts
Control Interfaces		Ethernet	
Weight		<4.5kg – Handheld scanner < 200kg – laser-system	

-1- ELASER-RHZ under development at :15xxnm for reduced hazard zone “Eye-safe” operation -contact WSL for information



Woodrow Scientific has a continuous technology development programme to ensure our products operate at the highest performance and quality levels. As a result, the specifications in this document are subject to change without notice.



The ELASER Platform is a Class 4 laser comprising a 1064nm Ytterbium doped fiber laser. Woodrow Scientific recommend that appropriate eye wear should be worn, and laser-safety procedures followed at all times.



Woodrow Scientific Ltd

4 Benham Road, Southampton Science Park, Southampton, SO16 7QJ, UK
Tel - +44 (0)7485 443375
e-mail info@woodrowscientific.com <http://www.woodrowscientific.com>

WSL

Woodrow Scientific Limited