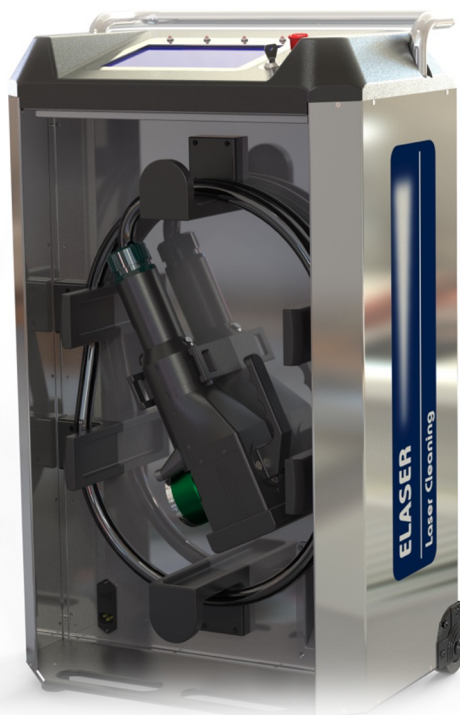
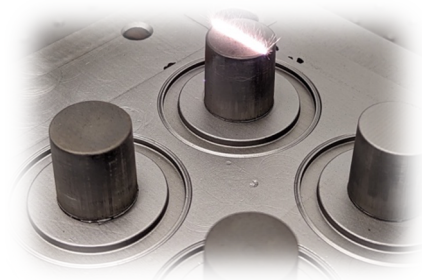


## ELASER-RHZ

### Laser-Cleaning Systems



#### Product Features

- 100/200-Watt Portable System
- Retina-safe fiber-Laser Engine
- Compact 2D Scan Head
- Pulse Energy up to 15mJ
- Manufactured in the UK
- Touchscreen Interface
- Low Operating Costs
- Unique to WSL

#### Applications

- Weld Seam Preparation
- Post-Weld Cleaning
- Paint and Coating Removal
- Contamination Removal
  - Rust
  - Mill Scale
  - Oil & Carbon
- Mould Cleaning
- Graffiti Removal

#### Enabling Laser-Cleaning without Laser-Enclosures

**Laser-cleaning** eliminates the need for consumables in surface cleaning processes. Unlike traditional media-blasting, water-jetting and chemical cleaning methods, no water, chemicals or abrasives are required. Laser-cleaning generates minimal waste, no mess and the underlying surface is unaffected by the process.

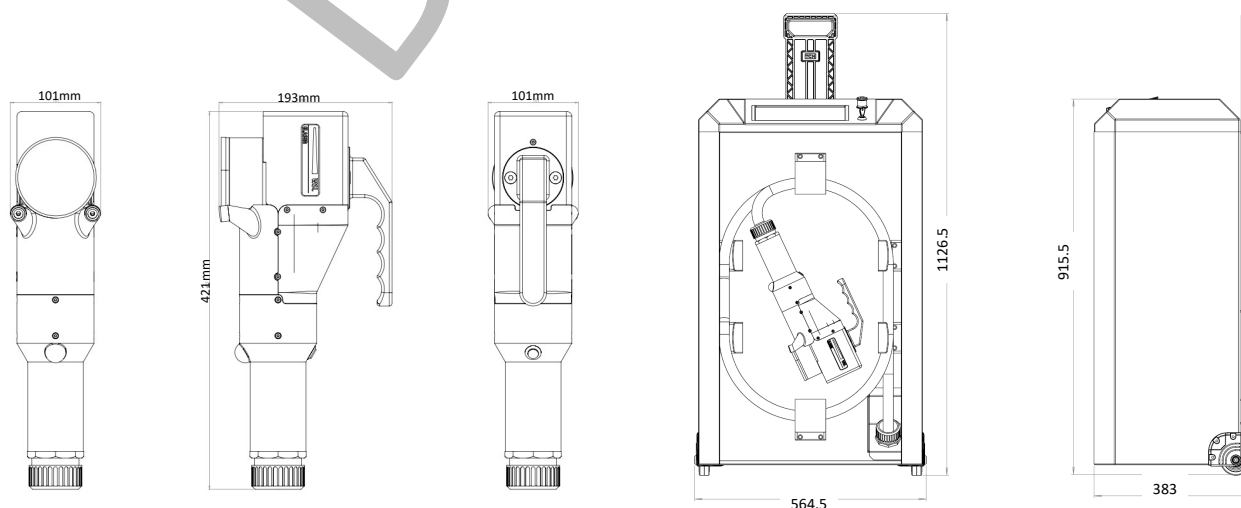
**ELASER-RHZ** retina-safe portable laser-cleaning systems are unique to the market-place. The unique design of ELASER-RHZ means that laser-cleaning can be implemented without physical laser-safety enclosures.

ELASER-RHZ can be used in open-plan manufacturing and in public access spaces, utilising a virtual safety enclosure to protect any passers by from being exposed to unsafe levels of laser radiation.

UK-manufactured, high-quality, performance and reliability, yet priced competitively to drive expansion of laser-cleaning within industrial , commercial and residential applications.

# ELASER-RHZ

	ELASER-RHZ-100	ELASER-RHZ-200
LASER SPECIFICATIONS		
Average Power	100 Watts	200 Watts
Pulse Energy	Up to 15mJ	
Pulse duration	100 nsecs	
Wavelength <sup>1</sup>	1550nm	
Power Tunability	0 to 100%	
Pulse Repetition Rate	Adjustable 200KHz CW	
HAND-HELD SCANNER and FIBER DELIVERY		
Scanner type	2-D Galvanometer	
Maximum scan rate	10 m/sec	
Scan shapes available	Fully programmable through GUI	
F-Theta Lenses available (working distance)	Interchangeable lenses 75mm up to 500mm	
Lens-protection windows	Included and replaceable	
Standard Cable Length	5m 15m Longer lengths available	
ELECTRICAL, MECHANICAL & INTERFACES		
Supply Voltage		110-250 VAC Single-Phase
Power Consumption	<750 Watts	<2000 Watts
Control Interfaces	Ethernet	
Weight	<3kg – Handheld scanner < 50kg – laser-system	



Woodrow Scientific has a continuous technology development programme to ensure our products operate at the highest performance and quality levels. As a result, the specifications in this document are subject to change without notice.



The ELASER Platform is a Class 4 laser comprising a 1064nm Ytterbium doped fiber laser. Woodrow Scientific recommend that appropriate eye wear should be worn, and laser-safety procedures followed at all times.



## Woodrow Scientific Ltd

4 Benham Road, Southampton Science Park, Southampton, SO16 7QJ, UK

Tel - +44 (0)7485 443375

e-mail [info@woodrowscientific.com](mailto:info@woodrowscientific.com) <http://www.woodrowscientific.com>

**WSL**

**Woodrow Scientific Limited**