

minimum 18 in. deep trusses (Item 2). When spray foam insulation is installed, resilient channels (Item 6) shall be installed maximum 12 in. OC, with channels adjacent to butt joints of gypsum board (Item 7) spaced maximum 3 in. away from gypsum butt joints. Gypsum board (Item 7) to be installed using minimum 1-1/4 in. long Type S screws, spaced maximum 8 in. OC, and butted end joints shall be staggered min. 2 ft within the assembly, and occur midway between the continuous furring channels. If used with a fire damper (Item 4) in the concealed space, minimum 1 in. clearance to be maintained between damper housing and spray foam insulation. Not evaluated for use with Items 5 through 5B, or 6A through 6E, or 7A.

**BASF CORP** — Enerlite® NM, Enerlite® G, FE178®, Spraytite® 178, Spraytite® 81206, Walltite® 200, Walltite® US, Walltite® US-N, and Walltite® HP+

**6. Resilient Channels** — Formed from min 25 MSG galv steel installed perpendicular to trusses. When no insulation is installed in the concealed space resilient channels are spaced 24 in. When the insulation (Item 5) is installed to the underside of the subfloor the resilient channels are spaced 16 in. OC. When insulation (Item 5 or 5A) is applied over the resilient channel/gypsum panel ceiling membrane, or when foamed plastic insulation (Item 5C) is sprayed to the underside of the subfloor, the resilient channel spacing shall be reduced to 12 in. OC. Channels secured to each truss with 1-1/4 in. long Type S bugle head steel screws. Channels overlapped 4 in. at splices. Two channels, spaced 6 in. OC, oriented opposite each gypsum panel end joint as shown in the above illustration. Additional channels shall extend min 6 in. beyond each side edge of panel.

**6A. Steel Framing Members\*** — (Not Shown) — As an alternate to Item 6.

a. **Main Runners** — Nom 10 or 12 ft long, 15/16 in. or 1-1/2 in. wide face, spaced 4 ft OC perpendicular to trusses. Main runners hung a min of 2 in. from bottom chord of trusses with 12 SWG galv steel wire. Wires spaced max 48 in. OC.

b. **Cross Tees or Channels** — Cross tees, nom 4 ft long, 15/16 in. or 1-1/2 in. wide face, or cross channels, nom 4 ft long, 1-1/2 in. wide face, installed perpendicular to the main runners, spaced 16 in. OC. Additional cross tees or channels used at 8 in. from each side of butted panel end joints. The cross tees or channels may be riveted or screw-attached to the wall angle or channel to facilitate the ceiling installation.

c. **Wall Angles or Channels** — Min 0.016 in. thick painted or galvanized steel angle with 1 in. legs or channel with a 1 by 1 1/2 by 1 in. profile, attached to walls at perimeter of ceiling with fasteners 16 in. OC. Used to support steel framing member ends and for screw-attachment of the gypsum panels.

**CGC INC** — Type DGL, RX

**USG INTERIORS LLC** — Type DGL, RX

**6B. Steel Framing Members\*** — (Not Shown) — As an alternate to Items 6 and 6A.

a. **Furring Channels** — Formed of No. 25 MSG galv steel, 2-9/16 in. or 2-23/32 in. wide by 7/8 in. deep, spaced 12 in. OC perpendicular to wood structural members. Channels secured to trusses as described in Item

b. Ends or adjoining channels overlapped 6 in. and tied together with double strand of No. 18 AWG galv steel wire near each end of overlap.

c. **Steel Framing Members\*** — Used to attach furring channels (Item a) to trusses (Item 2). Clips spaced 48 in. OC. RSIC-1 and RSIC-1 (2.75) clips secured to bottom of trusses with No. 8 by 2-1/2 in. coarse drywall screw through the center grommet. RSIC-V and RSIC-V (2.75) clips secured to consecutive trusses with No. 8 by 1-1/2 in. coarse drywall screw through the center hole. Furring channels are friction fitted into clips. RSIC-1 and RSIC-V clips for use with 2-9/16 in. wide furring channels. RSIC-1 (2.75) and RSIC-V (2.75) clips for use with 2-23/32 in. wide furring channels. Adjoining channels are overlapped as described in Item a. As an alternate, ends of adjoining channels may be overlapped 6 in. and secured together with two self-tapping No. 6 framing screws, min 7/16 in. long at the midpoint of the overlap, with one screw on each flange of the channel. Additional clips required to hold furring channel that supports the gypsum board butt joints, as described in Item 7.

**PAC INTERNATIONAL L L C** — Types RSIC-1, RSIC-V, RSIC-1 (2.75), RSIC-V (2.75)

**6C. Steel Framing Members\*** — (Not Shown) — As an alternate to Items 6, 6A and 6B.

a. **Furring Channels** — Formed of No. 25 MSG galv steel, 2-3/8 in. wide by 7/8 in. deep, spaced 12 in. OC perpendicular to trusses. When insulation (Item 5 or 5A) is applied over the resilient channel/gypsum panel ceiling membrane, the resilient channel spacing shall be reduced to 12 in. OC. Channels secured to trusses as described in Item 6Cb. Ends of adjoining channels overlapped 6 in. and tied together with double strand of No. 18 AWG galvanized steel wire near each end of overlap.

b. **Steel Framing Members\*** — Used to attach furring channels (Item 6Ca) to trusses (Item 2). Clips spaced 48 in. OC and secured to the bottom of the trusses with one No. 8 by 2-1/2 in. long coarse drywall screw through center grommet. Furring channels are friction fitted into clips. Adjoining channels are overlapped as described in Item 6Ca. As an alternate, ends of adjoining channels may be overlapped 6 in. and secured together with two self-tapping No. 6 framing screws, min 7/16 in. long at the midpoint of the overlap, with one screw on each flange of the channel. Additional clips required to hold furring channel that supports the gypsum board butt joints, as described in Item 7. Not evaluated for use with Item 5A or when insulation is draped over Furring Channels.

**PLITEC INC** — Type Genie Clip

**6D. Alternate Steel Framing Members\*** — (Not Shown) — As an alternate to items 6, 6A, 6B and 6C, furring channels and Steel Framing Members as described below.

a. **Furring Channels** — Formed of No. 25 MSG galv steel, 2-5/8 in. wide by 7/8 in. deep, spaced 16 in. OC, perpendicular to trusses. When insulation (Item 5 or 5A) is applied over the resilient channel/gypsum panel ceiling membrane, the resilient channel spacing shall be reduced to 12 in. OC. Channels secured to trusses as described in Item b.

b. **Steel Framing Members\*** — Used to attach furring channels (Item a) to the trusses (Item 2). Clips spaced at 48" OC and secured to the bottom of the trusses with one 2 in. Coarse Drywall Screw with 1 in. diam washer

through the center hole. Furring channels are then friction fitted into clips. Ends of channels are overlapped 6" and tied together with double strand of No. 18 AWG galvanized steel wire. Additional clips are required to hold the Gypsum Butt joints as described in Item 7.

**STUDCO BUILDING SYSTEMS** — RESILMOUNT Sound Isolation Clips - Type A237 or A237R

**6E. Resilient Channels - (Not Shown)** — For Use With Item 7A - Formed from min 25 MSG galv steel installed perpendicular to trusses and spaced 16 in. OC. Channels secured to each truss with 1-5/8 in. long Type S bugle head steel screws. Channels overlapped 4 in. at splices. Two channels, spaced 6 in. OC, oriented opposite each gypsum panel end joint. Additional channels shall extend min 6 in. beyond each side edge of panel. Insulation, Item 5B is applied over the resilient channel/gypsum panel (Item 7A) ceiling membrane.

**6F. Alternate Steel Framing Members\*** — (Not Shown) — As an alternate to Items 6, 6A, 6B, 6C, 6D and 6E furring channels and Steel Framing Members as described below.

a. **Furring Channels** — Formed of No. 25 MSG galv steel, 2-1/2 in. wide by 7/8 in. deep, spaced 16 in. OC, perpendicular to trusses. When insulation (Item 5 or 5A) is applied over the resilient channel/gypsum panel ceiling membrane, the resilient channel spacing shall be reduced to 12 in. OC. Channels secured to trusses as described in Item b.

b. **Steel Framing Members\*** — Used to attach furring channels (Item a) to the trusses (Item 2). Clips spaced at 48" OC and secured to the bottom of the trusses with one 2-1/2 in. Coarse Drywall Screw with 1 in. diam washer through the center hole. Furring channels are then friction fitted into clips. Ends of channels are overlapped 6" and tied together with double strand of No. 18 AWG galvanized steel wire. Additional clips are required to hold the Gypsum Butt joints as described in Item 7.

**REGUPOL AMERICA** — Type SonusClip

**6G. Steel Framing Members\*** — (Optional, Not Shown) — As an alternate to Item 6.

a. **Furring Channels** — Formed of No. 25 MSG galv steel, nominal 2-1/2 in. wide by 7/8 in. deep, spaced as indicated in Item 6, perpendicular to the trusses. Channels secured to Cold Rolled Channels at every intersection with a 3/4 in. TEK screw through each furring channel leg. Ends of adjoining channels overlapped 12 in. and fastened together with two double strand No. 18 SWG galv steel wire ties, one at each end of overlap, or with two 3/4 in. TEK screws in each leg of the overlap section. Two furring channels used at end joints of gypsum board (Item 7), each extending a min of 6 in. beyond both side edges of the board.

b. **Cold Rolled Channels** — 1-1/2 in. by 1/2 in., formed from No. 16 ga. galv steel, positioned vertically and parallel to trusses, friction-fitted into the channel caddy on the Steel Framing Members (Item 6Gd) and secured with two 3/4 in. TEK screws. Adjoining lengths of cold rolled channels lapped min. 12 in. and secured along bottom legs with four 3/4 in. TEK screws and wire-tied together with two double strand 18 SWG galv steel wire ties, one at each end of overlap.

c. **Blocking** — Where truss design does not permit direct, full contact of the hanger bracket, a piece of nominal 2 by 4 in. lumber (blocking), min. 12 in. long to permit full contact of the hanger bracket, to be secured vertically to the side of the trusses at the top and bottom of the blocking at each Steel Framing Member (Item 6Gd) location with 16d nails or minimum 2-1/2 in. screws.

d. **Steel Framing Members\*** — Spaced 48 in. OC max along truss, and secured to the truss on alternating trusses with two, #10 x 1-1/2 in. screws through mounting holes on the hanger bracket.

**PAC INTERNATIONAL L L C** — Type RSIC-SI-CRC EZ Clip

**6H. Steel Framing Members\*** — (Not Shown) — As an alternate to Item 6.

a. **Furring Channels** — Formed of No. 25 MSG galv steel, nominal 2-1/2 in. wide by 7/8 in. deep, spaced as indicated in Item 6, perpendicular to trusses and friction fit into Steel Framing Members (Item 6Hc). Ends of adjoining channels overlapped 6 in. and tied together with double strand of No. 18 SWG galv steel wire near each end of overlap or with two TEK screws along each leg of the 6 in. overlap. Two furring channels used at end joints of gypsum board (Item 7). Butt joint channels held in place by strong back channels placed upside down, on top of, and running perpendicular to primary furring channels, extending 6 in. longer than length of gypsum side joint. Strong back channels spaced maximum 48 in. OC. Strong back channels secured to every intersection of primary furring channels with four 7/16 in. pan head screws, two along each of the legs at intersections. Butt joint channels run perpendicular to strong back channels and shall be minimum 6 in. longer than length of joint, secured to strong back channels with 7/16 in. pan head screws, two along each of the legs at intersection with strong back channels.

b. **Blocking** — Where truss design does not permit direct, full contact of the hanger bracket, a piece of nominal 2 by 4 in. lumber (blocking), min. 12 in. long to permit full contact of the hanger bracket, to be secured vertically to the side of the trusses at the top and bottom of the blocking at each Steel Framing Member (Item 6Hc) location with 16d nails or minimum 2-1/2 in. screws.

c. **Steel Framing Members\*** — Used to attach furring channels (Item 6Ha) to trusses. Clips spaced 48 in. OC and secured along truss webs at each furring channel intersection with min. 3/4 in. long self-drilling #10 x 1-1/2 in. screws through each of the provided hole locations. Furring channels are friction fitted into clips.

**PAC INTERNATIONAL L L C** — Type RSIC-SI-1 Ultra

**6I. Steel Framing Members\*** — (Optional - Not Shown) — Used to attach resilient channels (Item 6) to trusses (Item 2). Clips spaced 48 in. OC and secured to trusses with one No. 8 x 2-1/2 in. coarse drywall screw through center grommet hole. Channels secured to clips with one #10 x 1/2 in. pan-head self-drilling screw. Ends of adjoining channels overlapped 6 in. and secured together with two #8 15 x 1/2 in. Philips Modified screws spaced 2-1/2 in. from the center of the overlap. Gypsum board butt joints require additional resilient channels spaced 1-1/2 in. from the butt joint on either side. One edge of the extra channels will extend to an adjacent truss where it is secured with a clip.

**KEENE BUILDING PRODUCTS CO INC** — Type RC+ Assurance Clip

**6J. Steel Framing Members\*** — (Optional, Not Shown) — Used as an alternate method to attach resilient channels to structural members. A resilient sound isolation accessory shall be used at each attachment point of the resilient channels and spaced max 24 in. O.C. Channel ends butted and centered under the structural members and attached with one accessory at each end. Additional accessories used to hold resilient channels that support the gypsum board end joints. The accessory envelops the mounting edge of the resilient channel. The accessory and resilient channel are fastened to the structural members with the screws supplied with the accessory and per the accessory manufacturer's installation instructions. Gypsum Board butt joints staggered minimum 24 in. OC and Gypsum Board screws spaced 8 in. OC when used.

**PAC INTERNATIONAL L L C** — Type RC-1 Boost

**7. Gypsum Board\*** — Nom 5/8 in. thick, 48 in. wide gypsum panels. When resilient channels (Item 6) are used, gypsum panels installed with long dimension perpendicular to resilient channels. Gypsum panels secured with 1 in. long Type S bugle head steel screws spaced 12 in. OC and located a min of 1/2 in. from side joints and 3 in. from end joints. When insulation (Items 5 or 5A) is applied over the resilient channel/gypsum panel ceiling membrane the screw spacing shall be reduced to 8 in. OC. End joints secured to both resilient channels as shown in end joint detail. When foamed plastic insulation (Item 5C) is applied to the underside of the subflooring, screw spacing shall be reduced to 8 in. OC and minimum 1-1/4 in. long Type S screws to install gypsum to the resilient channels (Item 6), and butted end joints shall be staggered min. 2 ft within the assembly, and occur midway between the continuous furring channels. End joints secured to both resilient channels as shown in end joint detail. When **Steel Framing Members** (Item 6A) are used, gypsum panels installed with long dimension perpendicular to cross tees with side joints centered along main runners and end joints centered along cross tees. Panels fastened to cross tees with 1 in. long Type S bugle-head screws spaced 8 in. OC in the field and along end joints. Panels fastened to main runners with 1 in. long Type S bugle-head screws spaced midway between cross tees. Screws along sides and ends of panels spaced 3/8 to 1/2 in. from board edge. End joints of panels shall be staggered with spacing between joints on adjacent panels not less than 2 ft OC. When **Steel Framing Members** (Item 6B or 6C) are used, gypsum panels installed with long dimensions perpendicular to furring channels. Panels attached to the furring channels using 1 in. long Type S bugle-head steel screws spaced 8 in. OC along butted end joints and in the field of the panel. Butted end joints shall be staggered min. 2 ft within the assembly, and occur midway between the continuous furring channels. Each end of each gypsum panel shall be supported by a single length of furring channel equal to the width of the gypsum panel plus 6 in. on each end. The two support furring channels shall be spaced approximately 3-1/2 in. OC, and be attached to underside of the truss with one clip at each end of the channel. When **Steel Framing Members** (Item 6D) are used, one layer of nom 5/8 in. thick, 4 ft wide gypsum board is installed with long dimensions perpendicular to furring channels. Gypsum board secured to furring channels with nom 1 in. long Type S bugle-head steel screws spaced 8 in. OC in the field of the board. Gypsum board butted end joints shall be staggered minimum 48 in. and centered over main furring channels. At the gypsum board butt joints, each end of each gypsum board shall be supported by a single length of furring channel equal to the width of the gypsum board plus 3 in. on each end. The two support furring channels shall be spaced approximately 3 in. in from joint. Screw spacing along the gypsum board butt joint and along both additional channels shall be 8 in. OC. Additional screws shall be placed in the adjacent section of gypsum board into the aforementioned 3 in. extension of the extra butt joint channels as well as into the main channel that runs between. Butt joint furring channels shall be attached with a RESILMOUNT Sound Isolation Clip at each end of the channel.

When **Steel Framing Members** (Item 6F) are used, one layer of nom 5/8 in. thick, 4 ft wide gypsum board is installed with long dimensions perpendicular to furring channels. Gypsum board secured to furring channels with nom 1 in. long Type S bugle-head steel screws spaced 8 in. OC in the field of the board. Gypsum board butted end joints shall be staggered minimum 48 in. and centered over main furring channels. At the gypsum board butt joints, an additional single length of furring channel shall be installed and be spaced approximately 3 in. from the butt joint (6 in. from the continuous furring channels) to support the floating end of the gypsum board. Each of these shorter sections of furring channel shall extend one truss beyond the width of the gypsum panel and be attached to the adjacent trusses with one SonusClip at every truss involved with the butt joint.

When **Steel Framing Members** (Item 6G) are used, nom 5/8 in. thick, 4 ft wide gypsum board, installed as described in Item 7. Adjacent butt joints staggered minimum 48 in. OC.

When **Steel Framing Members** (Item 6H) are used, nom 5/8 in. thick, 4 ft wide gypsum board, installed as described in Item 7. Butt joints staggered minimum 24 in. OC.

**CGC INC** — Types C, IP-X2, IPC-AR

**UNITED STATES GYPSUM CO** — Types C, IP-X2, IPC-AR

**USG MEXICO S A DE C V** — Types C, IP-X2, IPC-AR

**USG BORAL DRYWALL SFZ LLC** — Type C

**7A. Gypsum Board\* - (Not Shown)** — For use with Items 5B and 6E. Nom 5/8 in. thick, 48 in. wide gypsum panels installed with long dimension perpendicular to resilient channels. Gypsum panels secured with 1 in. long Type S bugle head steel screws spaced 8 in. OC and located a min of 1/2 in. from side joints and 3 in. from the end joints. Finish Rating with this ceiling system is 20 min.

**CGC INC** — Type ULIX

**UNITED STATES GYPSUM CO** — Type ULIX

**8. Finishing System** — (Not Shown) — Vinyl, dry or premixed joint compound, applied in two coats to joints and screw-heads. Nom 2 in. wide paper tape embedded in first layer of compound over all joints. As an alternate, nom 3/32 in. thick veneer plaster may be applied to the entire surface of gypsum board.

**\* Indicates such products shall bear the UL or cUL Certification Mark for jurisdictions employing the UL or cUL Certification (such as Canada), respectively.**

**Design No. P556**

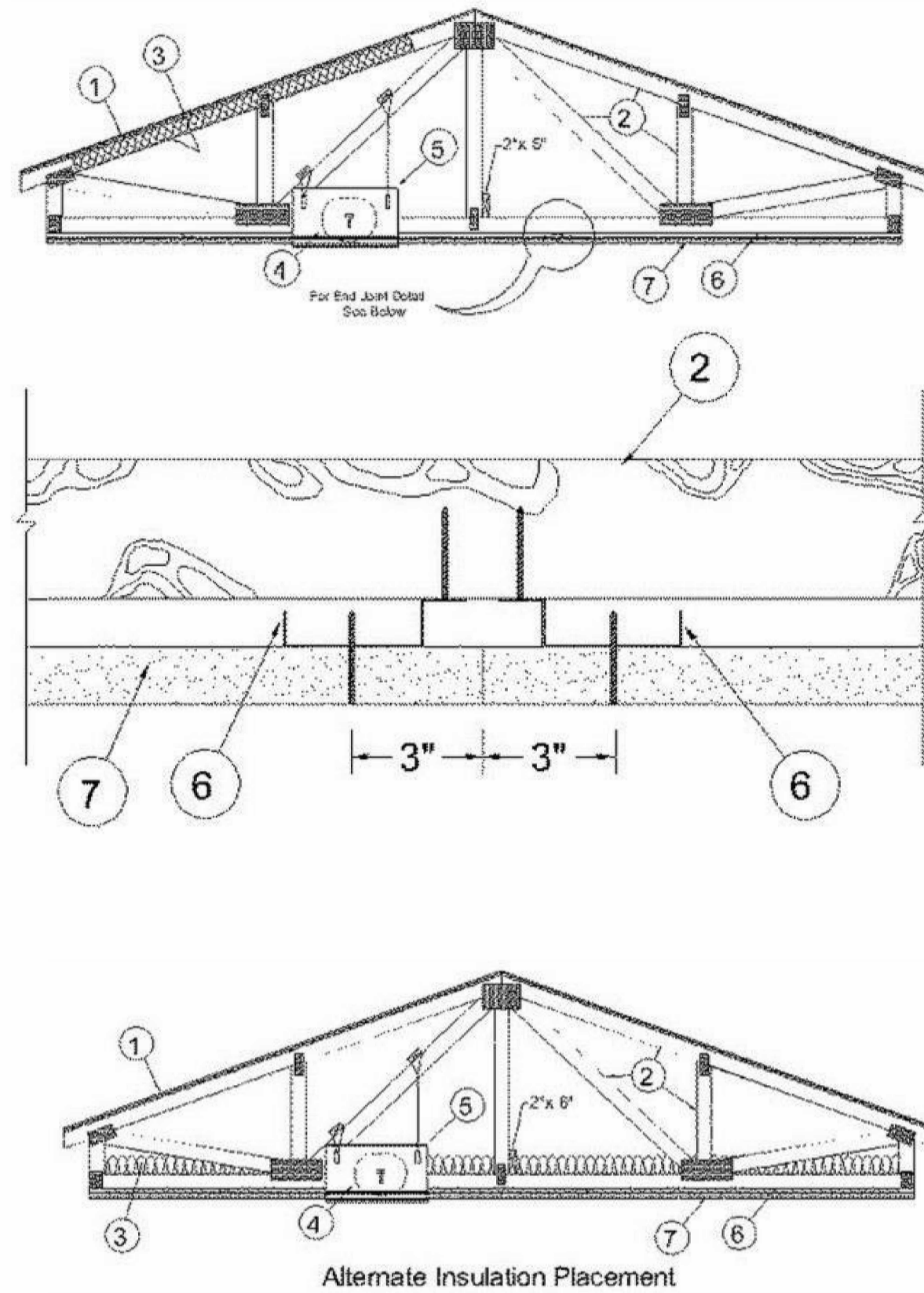
May 13, 2020

**Unrestrained Assembly Rating — 1 Hr.**

**Finish Rating — 24 or 25 Min (See Items 3, 3A and 3B)**

**This design was evaluated using a load design method other than the Limit States Design Method (e.g., Working Stress Design Method). For jurisdictions employing the Limit States Design Method, such as Canada, a load restriction factor shall be used — See Guide BXUV or BXUV7**

**\* Indicates such products shall bear the UL or cUL Certification Mark for jurisdictions employing the UL or cUL Certification (such as Canada), respectively.**



**1. Roofing System\*** — Any UL Class A, B or C Roofing System (TGFR) or Prepared Roof Covering (TFWZ) acceptable for use over nom 15/32 in. thick wood structural panels, min. grade "C-D" or "Sheathing". Nom 15/32 in. thick wood structural panels secured to trusses with No. 6d ringed shank nails. Nails spaced 12 in. OC along each truss. Staples having equal or greater withdrawal and lateral resistance strength may be substituted for the 6d nails. Construction adhesive is optional and may be used with either nails or staples.

**2. Trusses** — Pitch or Parallel chord trusses, spaced a max of 24 in. OC, fabricated from nom 2 by 4 lumber, with lumber oriented vertically or horizontally. Truss members secured together min.0.0356 in. thick galv steel plates. Plates have 5/16 in. long teeth projecting perpendicular to the plane of the plate. The teeth are in pairs facing each other (made by the same punch), forming a split tooth type plate. Each tooth has a chisel point on its outside edge. These points are diagonally opposite each other for each pair. The top half of each tooth has a twist for stiffness. The pairs are repeated on approximately 7/8 in. centers with four rows of teeth per inch of plate width. Where the truss intersects with the interior face of the exterior walls, the min truss depth shall be 5-1/4 in. with a min roof slope of 3/12 and a min. area in the plane of the truss of 21 sq/ft. Where the truss intersects with the interior face of the exterior walls, the min truss depth may be reduced to 3 in. if the batts and blankets (Item 3) are used as shown in the above illustration (Alternate Insulation Placement) and are firmly packed against the intersection of the bottom chords and the plywood sheathing.

**3. Batts and Blankets\*** — (Optional) -Glass fiber insulation, secured to the wood structural panels with staples spaced 12 in. OC or to the trusses with 0.090 in. diam galv steel wires spaced 12 in. OC. Any glass fiber insulation bearing the UL Classification Marking as to Surface Burning Characteristics and/or Fire Resistance, having a min density of 0.5 pcf. As an option, the insulation may be fitted in the concealed space, draped over the resilient channel/gypsum wallboard ceiling membrane when resilient channels and gypsum wallboard attachment is modified as specified in Items 6 and 7. The Finish Rating is 24 min. when the insulation is draped over the resilient channels and gypsum board ceiling membrane and 25 min. when it is installed on underside of the plywood deck or when it is omitted.

**3A. Loose Fill Material\*** — As an alternate to Item 3 — Any thickness of loose fill material bearing the UL Classification Marking for Surface Burning Characteristics, having a min density of 0.5 pcf, fitted in the concealed space, draped over the resilient channel/gypsum wallboard ceiling membrane when resilient channels and gypsum wallboard attachment is modified as specified in Items 6 and 7. The finished rating when loose fill material is used has not been determined.

**3B. Fiber, Sprayed\*** — As an alternate to Items 3 and 3A (not evaluated for use with Items 6B, 6C, 6D and 6E) — Any thickness of spray-applied cellulose insulation material, having a min density of 0.5 lb/ft3, applied with water, over the resilient channel/gypsum board ceiling membrane when resilient channels and gypsum board attachment is modified as specified in Items 6 and 7. Fiber, Sprayed is applied with moisture in accordance with the application instructions supplied with the product. The finish rating when Fiber Sprayed is used has not been determined. Alternate application method: The fiber is applied without water or adhesive in accordance with the application instructions supplied with a minimum density of 0.5 lb/ft3 over the resilient channel/gypsum board ceiling membrane when resilient channels and gypsum board attachment is modified as specified in Items 6 and 7. Alternate application method: The fiber is applied without water or adhesive to a nominal density of 3.5 lb/ft3 behind netting (Item 9)

**JURISDICTION APPROVAL**

ISSUE/REVISIONS	
08 OCT 2021	ISSUE SET

**A5.3CB**

JOB NO.

3849

**ISSUE SET**

stapled to the rafters. The netting is stapled at both lower edges of the rafters creating a cavity to accept the cellulose fiber.

**U S GREENFIBER L L C** — IN5735, IN5745, IN5750LD, and SANCTUARY for use with wet or dry application. IN5510LD, IN5515LD, IN5541LD, IN5735, IN5765LD, and IN5773LD are to be used for dry application only.

**3C. Foamed Plastic\*** — (As an alternate to Item 3 - Not Shown) — Spray foam insulation applied directly to the underside of the underside of the roofing system (Item 1). Spray foam insulation installed to a maximum thickness of 10 in. at a nominal 0.5 lb/ft<sup>3</sup> density, while maintaining a minimum 8-1/2 in. clearance between the spray foam insulation and the gypsum board (Item 7). When spray foam insulation is used, resilient channels (Item 6) shall be installed maximum 12 in. OC, with channels adjacent to butt joints of gypsum board (Item 7) installed at 6 in. OC to allow for maximum 3 in. spacing off ends of the gypsum board joints. Gypsum board (Item 7) to be installed using 1-1/4 in. long Type S screws, spaced maximum 8 in. OC, and butted end joints shall be staggered min. 2 ft within the assembly, and occur midway between the continuous furring channels. If used with a ceiling radiation damper in the concealed space, minimum 1 in. clearance to be maintained between damper housing and spray foam insulation. . Limited to resilient channels, Item 6 only, no Item 6 alternates. The finished rating when this insulation is used has not been determined.

**SES FOAM INC** — Sucraseal

**3D. Foamed Plastic\*** — (As alternate to Item 3 - Not Shown) — Spray foam insulation applied directly to the underside of the roofing system (Item 1). Spray foam insulation installed to a maximum thickness of 10 in. at a nominal 0.5 lb/ft<sup>3</sup> or 2.0 lb/ft<sup>3</sup> density, depending on the product installed. When spray foam insulation is installed, resilient channels (Item 6) shall be installed maximum 12 in. OC, with channels adjacent to butt joints of gypsum board (Item 7) spaced maximum 3 in. away from gypsum butt joints. Gypsum board (Item 7) to be installed using minimum 1-1/4 in. long Type S screws, spaced maximum 8 in. OC, and butted end joints shall be staggered min. 2 ft within the assembly, and occur midway between the continuous furring channels. If used with a ceiling radiation damper in the concealed space, minimum 1 in. clearance to be maintained between damper housing and spray foam insulation. Limited to resilient channels, Item 6 only, no Item 6 alternates. The finished rating when this insulation is used has not been determined.

**BASF CORP** — Enertite® NM, Enertite® G, FE178®, Spraytite® 178, Spraytite® 81206, Walltite® 200, Walltite® US, Walltite® US-N, and Walltite® HP+

**3E. Foamed Plastic\*** — (As an alternate to Item 3 - Not Shown) — Spray foam insulation applied directly to the underside of the underside of the roofing system (Item 1). Spray foam insulation installed to a maximum thickness of 17 in. at a nominal 0.5 lb/ft<sup>3</sup> density, while maintaining a minimum 1-1/2 in. clearance between the spray foam insulation and the gypsum board (Item 7). When spray foam insulation is used, resilient channels (Item 6) shall be installed maximum 12 in. OC, with channels adjacent to butt joints of gypsum board (Item 7) installed at 6 in. OC to allow for maximum 3 in. spacing off ends of the gypsum board joints. Gypsum board (Item 7) to be installed using 1-1/4 in. long Type S screws, spaced maximum 8 in. OC, and butted end joints shall be staggered min. 2 ft within the assembly, and occur midway between the continuous furring channels. If used with a fire damper (Items 5 through 5B) in the concealed space, no clearance is necessary between damper housing and spray foam insulation. . Limited to resilient channels, Item 6 only, no Item 6 alternates. The finished rating when this insulation is used has not been determined.

**SES FOAM INC** — EasySeal5

**4. Air Duct\*** — Any UL Class 0 or Class 1 flexible air duct installed in accordance with the instructions provided by the damper manufacturer.

**5. Ceiling Damper\*** — (For use with Air Duct Item 4) — Max 14 in. long by 14 in. wide by 18 in. high ceiling damper with boot or box assembly, fabricated from galv steel. The aggregate area of the register opening(s) through the ceiling membrane shall not exceed 98 sq in. per 100 sq ft of ceiling area. Damper assembly installed in accordance with the manufacturers installation instructions.

**AIRE TECHNOLOGIES INC** — Model 50 w/Boot, 50EA w/Boot, 51 w/Boot, 50 w/Box, 50EA w/Box or 51 w/Box.

**AIRVAC INDUSTRIES** — Series AVI-50 w/Boot, AVI-50EA w/Boot, AVI-51 w/Boot, AVI-50 w/Box, AVI-50EA w/Box, AVI-51 w/Box.

**5A. Ceiling Damper\*** — (For use with Air Duct Item 4) — Max 12 in. diameter damper and insulated register box assembly. The maximum size of the register box assembly is nom. 20 in. long by 20 in. wide and 4 in. high fabricated from galv. Steel. Aggregate area of the register opening(s) through the ceiling membrane shall not exceed 128 sq in. per 100 sq ft of ceiling area. Damper assembly installed in accordance with the manufacturers installation instructions.

**AIRE TECHNOLOGIES INC** — Series 57

**AIRVAC INDUSTRIES** — Model AVI-57IB

**5B. Ceiling Damper\*** — (For use with Air Duct Item 4) — Max 20 in. long by 16 in. wide by 4 in. high rectangular damper with duct board plenum box assembly. The maximum outer dimensions of the plenum box assembly is 23-1/2 in. long by 19-1/2 in. wide and 17 in. high fabricated from 6pcf. 1-1/2 to 2 in. thick Knauf Air Duct Board M\*. Aggregate area of the register opening(s) through the ceiling membrane shall not exceed 160 sq in. per 100 sq ft ceiling area. Damper assembly installed in accordance with the manufacturers installation instructions.

**AIRE TECHNOLOGIES INC** — Series 58

**AIRVAC INDUSTRIES** — Series AVI-58

**6. Furring Channels** — Resilient channels formed of 25 MSG galv steel, spaced 16 in. OC, installed perpendicular to trusses. When batt and blanket material, Item 3, is draped over the resilient channel/gypsum wallboard ceiling membrane, the spacing shall be 12 in. OC. Channels secured to each truss with 1-1/4 in. long Type S steel screws. Channels overlapped 4 in. at splices. Channels oriented opposite at wallboard butt joints (spaced 6 in. OC) as shown in the above illustration.

**6A. Steel Framing Members\* - (Not Shown)** — As an alternate to Item 6, furring channels and Steel Framing Members\* as described below.

**a. Furring Channels** — Formed of No. 25 MSG galv steel, 2-9/16 in. or 2-23/32 in. wide by 7/8 in. deep, spaced 16 in. OC perpendicular to trusses. When batt insulation (Item 3) is draped over the resilient channel/gypsum board ceiling membrane, the resilient channel spacing shall be reduced to 12 in. OC. Channels secured to trusses as described in Item b. Ends of adjoining channels overlapped 6 in. and tied together with double strand of No. 18 SWG galv steel wire near each end of overlap.

**b. Steel Framing Members\*** — Used to attach furring channels (Item a) to trusses (Item 2). Clips spaced 48 in. OC. RSIC-1 and RSIC-1 (2.75) clips secured to alternating trusses with No. 8 x 2-1/2 in. coarse drywall screw through the center grommet. RSIC-V and RSIC-V (2.75) clips secured to alternating trusses with No. 8 x 1-1/2 in. coarse drywall screw through the center hole. Furring channels are friction fitted into clips. RSIC-1 and RSIC-V clips for use with 2-9/16 in. wide furring channels. RSIC-1 (2.75) and RSIC-V (2.75) clips for use with 2-23/32 in. wide furring channels. Adjoining channels are overlapped as described in Item a. As an alternate, ends of adjoining channels may be overlapped 6 in. and secured together with two self-tapping No. 6 framing screws, min 7/16 in. long at the midpoint of the overlap, with one screw on each flange of the channel. Additional clips required to hold furring channel that supports the gypsum board butt joints, as described in Item 7.

**PAC INTERNATIONAL L L C** — Types RSIC-1, RSIC-V, RSIC-1 (2.75), RSIC-V (2.75).

**6B. Steel Framing Members\*** — (Not Shown) - As an alternate to Items 6 and 6A.

**a. Furring Channels** — Hat-shaped furring channels, 7/8 in. deep by 2-5/8 in. wide at the base and 1-1/4 in. wide at the face, formed from No. 25 ga. galv steel, spaced max 16 in. OC perpendicular to trusses and Cold Rolled Channels (Item 6Bb). Furring channels secured to Cold Rolled Channels at every intersection with a 1/2 in. pan head self-drilling screw through each furring channel leg. Ends of adjoining channels overlapped 4 in. and tied together with two double strand No. 18 SWG galv steel wire ties, one at each end of overlap. Supplemental furring channels at base layer and outer layer gypsum board butt joints are not required. Batts and Blankets draped over furring channels as described in Item 3. Two layers of gypsum board attached to furring channels as described in Item 7.

**b. Cold Rolled Channels** — 1-1/2 in. by 1/2 in., formed from No. 16 ga. galv steel, positioned vertically and parallel to trusses, friction-fitted into the channel caddy on the Steel Framing Members (Item 6Bd). Adjoining lengths of cold rolled channels lapped min. 6 in. and wire-tied together with two double strand 18 SWG galv steel wire ties, one at each end of overlap.

**c. Blocking** — Where truss design does not permit direct, full contact of the hanger bracket, a piece of nominal 2 by 4 in. lumber (blocking), min. 6 in. long to permit full contact of the hanger bracket, to be secured vertically to the side of the truss (Item 2) at the top and bottom of the blocking at each Steel Framing Member (Item 6Bd) location.

**d. Steel Framing Members\*** — Hangers spaced 48 in. OC, max along truss, and secured to the Blocking (Item 6Bc) on alternating trusses with a single 5/16 in. by 2 in. hex head lag bolt or four #6 1-1/4 in. drywall screws through mounting hole(s) on the hanger bracket. The two 1/4 in. long steel teeth on the hanger are embedded in the side of the blocking. Hanger positioned on blocking and leveling bolt height adjusted such that furring channels are flush with bottom of trusses before gypsum board installation. Spring gauge of hanger chosen per manufacturer's instructions.

**KINETICS NOISE CONTROL INC** — Type ICW.

**6C. Steel Framing Members\*** — (Not Shown) - As an alternate to Items 6, 6A and 6B.

**a. Furring Channels** — Formed of No. 25 MSG galv steel, 2-3/8 in. wide by 7/8 in. deep installed perpendicular to wood structural members. Channels spaced a max of 16 in. OC when no insulation (Item 3, 3A or 3B) is fitted in the concealed space or a max of 12 in. OC when insulation (Item 3, 3A or 3B) is fitted in the concealed space. Channels secured to trusses as described in Item 6Cb. Ends of adjoining channels overlapped 6 in. and

two self-tapping No. 6 framing screws, min 7/16 in. long at the midpoint of the overlap, with one screw on each flange of the channel. Additional clips required to hold furring channel that supports the gypsum board butt joints, as described in Item 7.

**PLITEQ INC** — Type Genie Clip

**6D. Steel Framing Members\*** — (Not Shown) - As an alternate to Items 6, 6A, 6B and 6C.

**a. Main runners** — Installed perpendicular to trusses — Nom 10 or 12 ft long, 15/16 in. or 1-1/2 in. wide face, spaced 4 ft OC. Main runners hung a min of 2 in. from bottom chord of trusses with 12 SWG galv steel wire. Wires located a max of 48 in. OC.

**b. Cross tees or channels** — Nom 4 ft long, 15/16 in. or 1-1/2 in. wide face or cross channels, nom 4 ft long, 1-1/2 wide face, installed perpendicular to the main runners, spaced 16 in. OC. Additional cross tees or channels used at 8 in. from each side of butted gypsum board end joints. The cross tees or channels may be riveted or screw-attached to the wall angle or channel to facilitate the ceiling installation.

**c. Wall angles or channels** — Used to support steel framing member ends and for screw-attachment of the gypsum wallboard — Min 0.016 in. thick painted or galvanized steel angle with 1 in. legs or min. 0.016 in. thick painted or galvanized steel channel with a 1 by 1-1/2 by 1 in. profile, attached to walls at perimeter of ceiling with fasteners 16 in. OC.

**CGC INC** — Type DGL or RX.

**USG INTERIORS LLC** — Type DGL or RX.

**6E. Alternate Steel Framing Members\*** — (Not Shown) - As an alternate to items 6, 6A, 6B, 6C and 6D, furring channels and Steel Framing Members as described below.

**a. Furring Channels** — Formed of No. 25 MSG galv steel, 2-5/8 in. wide by 7/8 in. deep, spaced 16 in. OC, perpendicular to trusses. When batt insulation (Item 3, 3A or 3B) is draped over the resilient channel/gypsum board ceiling membrane, the resilient channel spacing shall be reduced to 12 in. OC. Channels secured to trusses as described in Item b.

**b. Steel Framing Members\*** — Used to attach furring channels (Item a) to the wood trusses (Item 2). Clips spaced at 48" OC and secured to the bottom of the trusses with one 2 in. Coarse Drywall Screw with 1 in. diam washer through the center hole. Furring channels are then friction fitted into clips. Ends of channels are overlapped 6" and tied together with double strand of No. 18 AWG galvanized steel wire.Additional clips are required to hold the Gypsum Butt joints as described in Item 7.

**STUDCO BUILDING SYSTEMS** — RESILMOUNT Sound Isolation Clips - Type A237 or A237R

**6F. Steel Framing Members\*** — (Not Shown) - As an alternate to Items 6 through 6E- Not for use with Items 3, 3A, or 3B. Main runners nom 12 ft long, spaced 72 in. OC. Main runners suspended by min 12 SWG galv steel hanger wires spaced 48 in. OC. Cross tees, nom 6 ft long, installed perpendicular to main runners and spaced 24 in. OC. Additional 6 ft long cross tees required at each gypsum board end joint with butted gypsum board end joints centered between cross tees spaced 8 in. OC. The main runners and cross tees may be riveted or screw attached to the wall angle or channel to facilitate the ceiling installation.

**USG INTERIORS LLC** — Type DGL or RX

**6G. Alternate Steel Framing Members\*** — (Not Shown) - As an alternate to items 6 through 6F furring channels and Steel Framing Members as described below.

**a. Furring Channels** — Formed of No. 25 MSG galv steel, 2-1/2 in. wide by 7/8 in. deep, spaced 16 in. OC, perpendicular to trusses. When batt insulation (Item 3, 3A or 3B) is draped over the resilient channel/gypsum board ceiling membrane, the resilient channel spacing shall be reduced to 12 in. OC. Channels secured to trusses as described in Item b.

**b. Steel Framing Members\*** — Used to attach furring channels (Item a) to the wood trusses (Item 2). Clips spaced at 48" OC and secured to the bottom of the trusses with one 2-1/2 in. Coarse Drywall Screw with 1 in. diam washer through the center hole. Furring channels are then friction fitted into clips. Ends of channels are overlapped 6" and tied together with double strand of No. 18 AWG galvanized steel wire. Additional clips are required to hold the Gypsum Butt joints as described in Item 7.

**REGUPOL AMERICA** — Type SonusClip

**7. Gypsum Board\*** — One layer of nom 5/8 in. thick, 48 in. wide, installed with long dimension perpendicular to resilient channels with 1 in. long Type S screws spaced 12 in. OC and located a min of 1/2 in. from side joints and 3 in. from the end joints. At end joints, two resilient channels are used, extending a min of 6 in. beyond both ends of the joint. When insulation (Item 3, 3A, 3B) is draped over the resilient channel/gypsum wallboard ceiling membrane, screws shall be installed at 8 in. OC.

When **Steel Framing Members\*** (Item 6A or 6C) are used, sheets installed with long dimension perpendicular to furring channels and side joints of sheet located beneath trusses. Gypsum board screws are driven through channel spaced 12 in. OC in the field when no insulation (Item 3, 3A, 3B) is fitted in the concealed space, or 8 in. OC in the field when insulation (Item 3, 3A, 3B) is fitted in the concealed space, draped over the furring channel/gypsum board ceiling membrane. Gypsum board butt joints shall be staggered min. 2 ft within the assembly, and occur between the main furring channels. At the gypsum board butt joints, each end of the gypsum board shall be supported by a single length of furring channel equal to the width of the wallboard plus 6 in. on each end. The furring channels shall be spaced approximately 3-1/2 in. OC, and be attached to the trusses with one clip at each end of the channel. Screw spacing along the butt joint to attach the gypsum board to the furring channels shall be 8 in. OC. Second (outer) layer of gypsum board required when furring channels (Item 6A, a) are spaced 24 in. OC and insulation is fitted in the concealed space, draped over the furring channel/gypsum board ceiling membrane. Outer layer of gypsum board attached to the furring channels using 1-5/8 in. long Type S bugle-head screws spaced 8 in. OC at butted joints and 12 in. OC in the field. Butted end joints of outer layer to be offset a minimum of 8 in. from base layer end joints. Butted side joints of outer layer to be offset minimum 18 in. from butted side joints of base layer.

When **Steel Framing Members** (Item 6B) are used, two layers of nom 5/8 in. thick, 4 ft wide gypsum board are installed with long dimensions perpendicular to furring channels (Item 6Ba). Base layer attached to the furring channels using 1 in. long Type S bugle head steel screws spaced 8 in. OC along butted end joints and 12 in. OC in the field of the board. Butted end joints centered on the continuous furring channels. Butted base layer end joints to be offset a min of 16 in. in adjacent courses. Outer layer attached to the furring channels using 1-5/8 in. long Type S bugle head steel screws spaced 8 in. OC at butted end joints and 12 in. OC in the field. Butted end joints centered on the continuous furring channels and offset a min of 16 in. from butted end joints of base layer. Butted side joints of outer layer to be offset min 16 in. from butted side joints of base layer.

When **Steel Framing Members** (Item 6E) are used, one layer of nom 5/8 in. thick, 4 ft wide gypsum board is installed with long dimensions perpendicular to furring channels. Gypsum board secured to furring channels with nom 1 in. long Type S bugle-head steel screws spaced 8 in. OC in the field of the board. Gypsum board butted end joints shall be staggered minimum 48 in. and centered over main furring channels. At the gypsum board butt joints, each end of each gypsum board shall be supported by a single length of furring channel equal to the width of the gypsum board plus 3 in. on each end. The two support furring channels shall be spaced approximately 3 in. in from end joint. Screw spacing along the gypsum board butt joint and along both additional channels shall be 8 in. OC. Butt joing furring channels shall be attached with one RESILMOUNT Sound Isolation Clip at each end of the channel.

When **Steel Framing Members\*** (Item 6F) are used, one layer of nom 5/8 in. thick, 4 ft wide gypsum board sheets installed with long dimension (side joints) perpendicular to the 6 ft long cross tees with the end joints staggered min 4 ft and centered between cross tees which are spaced 8 in. OC. Gypsum board side joints may occur beneath or between main runners. Prior to installation of the gypsum board sheets, backer strips consisting of nom 7-3/4 in. wide pieces of gypsum board are to be laid atop the cross tee flanges and centered over each butted end joint location. The backer strips are to be secured to the flanges of the cross tees at opposite corners of the backer strip with hold down clips to prevent the backer strips from being uplifted during screw-attachment of the gypsum board sheets. Gypsum board fastened to cross tees with 1 in. drywall screws spaced 1 in. and 4 in. from the side joints and max 8 in. OC in the field of the board. The butted end joints are to be secured to the backer strip with No. 10 by 1-1/2 in. long Type G laminating screws located 1 in. from each side of the butted end joint and spaced 1 in. and 4 in. from the side joints and max 8 in. OC in the field of the board.

When **Steel Framing Members** (Item 6G) are used, one layer of nom 5/8 in. thick, 4 ft wide gypsum board is installed with long dimensions perpendicular to furring channels. Gypsum board secured to furring channels with nom 1 in. long Type S bugle-head steel screws spaced 8 in. OC in the field of the board. Gypsum board butted end joints shall be staggered minimum 48 in. and centered over main furring channels. At the gypsum board butt joints, an additional single length of furring channel shall be installed and be spaced approximately 3 in. from the butt joint (6 in. from the continuous furring channels) to support the floating end of the gypsum board. Each of these shorter sections of furring channel shall extend one truss beyond the width of the gypsum panel and be attached to the adjacent trusses with one SonusClip at every truss involved with the butt joint.

**AMERICAN GYPSUM CO** — Types AG-C

**CGE INC** — Types C, IP-X2, IPC-AR.

**CERTAINTED GYPSUM INC** — Type C

**CONTINENTAL BUILDING PRODUCTS OPERATING CO, L L C** — Type LGFC-C/A

**GEORGIA-PACIFIC GYPSUM L L C** — Type TG-C

**NATIONAL GYPSUM CO** — Types EXP-C, FSW-G, FSW-C, FSK-G, FSK-C.

**THAI GYPSUM PRODUCTS PCL** — Type C

**UNITED STATES GYPSUM CO** — Types C, IP-X2, IPC-AR.

**USG BORAL DRYWALL SFZ LLC** — Type C

**USG MEXICO S A DE C V** — Types C, IP-X2, IPC-AR.

**7A. Gypsum Board\*** — For use with **Steel Framing Members** (Item 6D) when **Batts and Blankets\*** (Item 3) are not used - One layer of nom 5/8 in. thick by 48 in. wide boards, installed with long dimension parallel to the main runners. Gypsum board fastened to each cross tee or channel with five wallboard screws, with one screw located at the midspan of the cross tee or channel, one screw located 12 in. from and on each side of the cross tee or channel mid span and one screw located 1-1/2 in. from each gypsum board side joint. Except at wallboard end joints, wallboard screws shall be located on alternating sides of cross tee flange. At gypsum board end joints, gypsum board screws shall be located 1/2 in. from the joint. Gypsum board fastened to main runners with wallboard screws 1/2 in. from side joints, midway between intersections with cross tees or channels (16 in. OC). End joints of adjacent gypsum board sheets shall be staggered not less than 32 in. Gypsum board sheets screw attached to leg of wall angle with wallboard screws spaced 12 in. OC. Joints treated as described in Item 7. For use with **Steel Framing Members\*** (Item 6D) when **Batts and Blankets\*** (Item 3) are used - 5/8 in. thick, 4 ft wide; installed with long dimension perpendicular to cross tees with side joints centered along main runners and end joints centered along cross tees. Fastened to cross tees with 1 in. long steel gypsum board screws spaced 8 in. OC in the field and 8 in. OC along end joints. Fastened to main runners with 1 in. long gypsum board screws spaced midway between cross tees. Screws along sides and ends of boards spaced 3/8 to 1/2 in. from board edge. End joints of the sheets shall be staggered with spacing between joints on adjacent boards not less than 4 ft OC.

**CGC INC** — Type C or IP-X2.

**UNITED STATES GYPSUM CO** — Type C or IP-X2.

**USG BORAL DRYWALL SFZ LLC** — Type C

**USG MEXICO S A DE C V** — Type C or IP-X2.

**7B. Gypsum Board\* (As an alternative to Items 7 and 7A)** — Nom 5/8 in. thick, 48 in. wide gypsum board, installed and secured as described in Items 7 and 7A with max screw spacing 8 in. OC.

**CGC INC** — Type ULIX

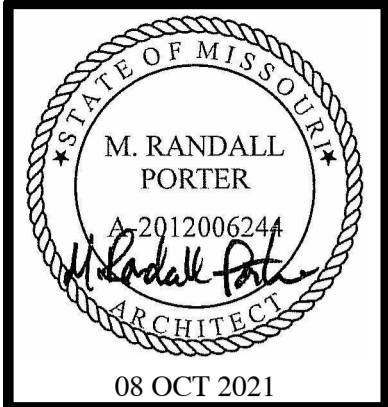
**UNITED STATES GYPSUM CO** — ULIIX

**8. Finishing System** — (Not Shown)— Vinyl, dry or premixed joint compound, applied in two coats to joints and screw-heads; paper tape, 2 in. wide, embedded in first layer of compound over all joints. As an alternate, nom 3/32 in. thick veneer plaster may be applied to the entire surface of gypsum wallboard.

**9. Netting** — (Not Shown) - For use when Sprayed Fiber\* (Item 3B) is used - Woven netting material fastened to underside of each truss with staples, with side joints overlapped.

**\* Indicates such products shall bear the UL or cUL Certification Mark for jurisdictions employing the UL or cUL Certification (such as Canada), respectively.**

Last Updated on 2020-05-13



HARMONY CENTER  
OKLAHOMA CITY, OKLAHOMA COUNTY,  
OKLAHOMA



COPYRIGHT © 2021  
1ST ISSUE  
08 OCT 2021

ISSUE/REVISIONS  
08 OCT 2021 ISSUE SET

SHEET NO. A5.4CB  
JOB NO. 3849  
10/1/2021 10:24:55 AM

JURISDICTION APPROVAL

ISSUE SET



HARMONY CENTER  
OKLAHOMA CITY, OKLAHOMA COUNTY,  
OKLAHOMA



COPYRIGHT © 2021  
1ST ISSUE  
08 OCT 2021

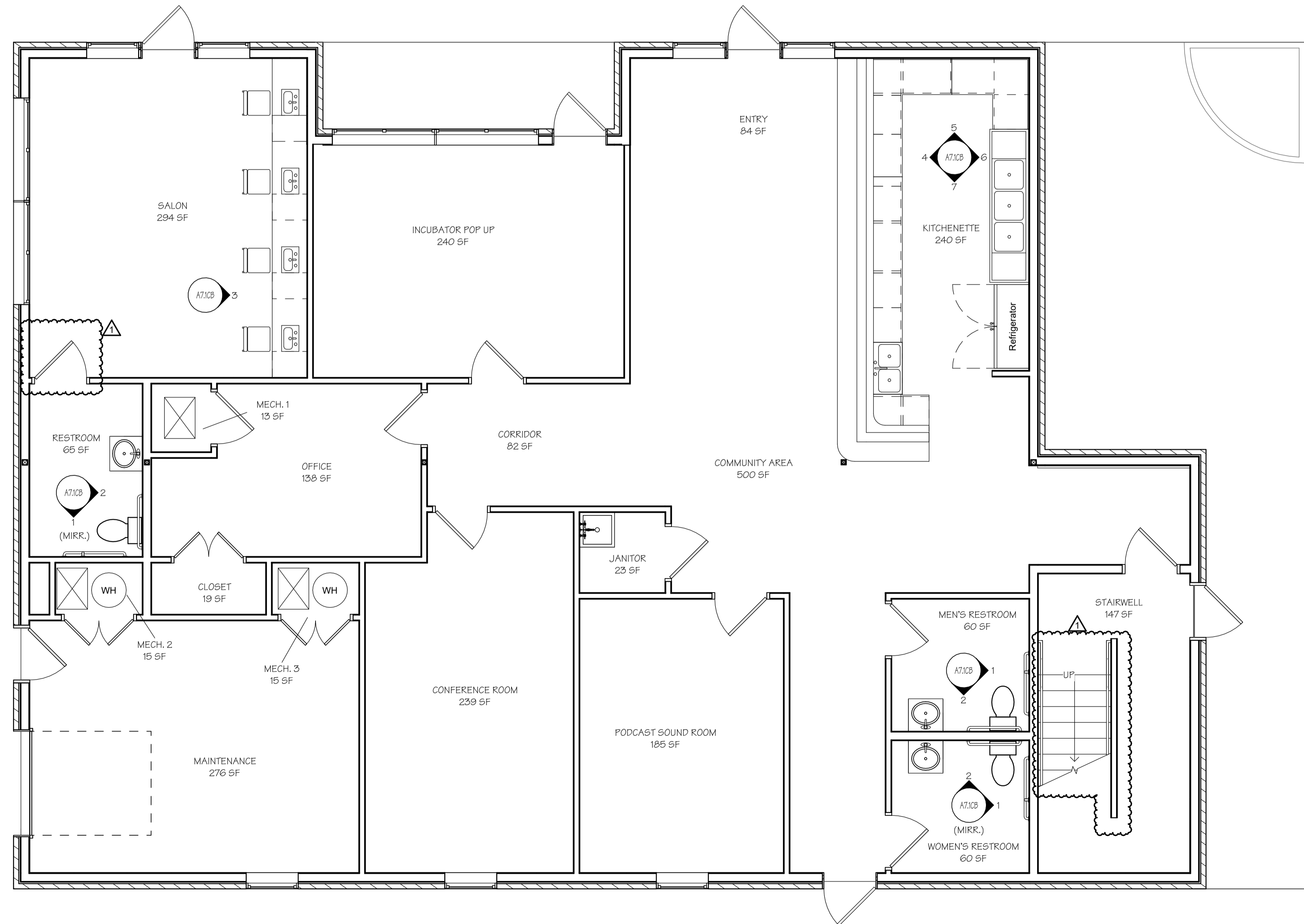
ISSUE/REVISIONS	
08 OCT 2021	ISSUE SET
25 JAN 2022	ADDENDUM #1

SHEET NO. A6.0CB

JOB NO.  
3849

7/24/2022 3:58:07 PM

COMMUNITY AREA FINISH SCHEDULE				
NAME	FLOOR FINISH	BASE FINISH	WALL FINISH	CEILING FINISH
COMM				
CLOSET	VINYL PLANK	WOOD	TEXTURED GYP.	PAINTED GYP.
COMMUNITY AREA	VINYL PLANK	WOOD	TEXTURED GYP.	PAINTED GYP.
CONFERENCE ROOM	VINYL PLANK	WOOD	TEXTURED GYP.	PAINTED GYP.
CORRIDOR	VINYL PLANK	WOOD	TEXTURED GYP.	PAINTED GYP.
ENTRY	VINYL PLANK	WOOD	TEXTURED GYP.	PAINTED GYP.
INCUBATOR POP UP	VINYL PLANK	WOOD	TEXTURED GYP.	PAINTED GYP.
JANITOR	VINYL PLANK	WOOD	TEXTURED GYP.	PAINTED GYP.
KITCHENETTE	VINYL PLANK	WOOD	TEXTURED GYP.	PAINTED GYP.
MAINTENANCE	SEALED CONCRETE	WOOD	TEXTURED GYP.	PAINTED GYP.
MECH. 1	SEALED CONCRETE	WOOD	TEXTURED GYP.	PAINTED GYP.
MECH. 2	SEALED CONCRETE	WOOD	TEXTURED GYP.	PAINTED GYP.
MECH. 3	SEALED CONCRETE	WOOD	TEXTURED GYP.	PAINTED GYP.
MEN'S RESTROOM	VINYL PLANK	WOOD	TEXTURED GYP.	PAINTED GYP.
OFFICE	VINYL PLANK	WOOD	TEXTURED GYP.	PAINTED GYP.
PODCAST SOUND ROOM	VINYL PLANK	WOOD	TEXTURED GYP.	PAINTED GYP.
RESTROOM	VINYL PLANK	WOOD	TEXTURED GYP.	PAINTED GYP.
SALON	VINYL PLANK	WOOD	TEXTURED GYP.	PAINTED GYP.
STAIRWELL	VINYL PLANK & RUBBER STAIR TREADS	WOOD	TEXTURED GYP.	PAINTED GYP.
WOMEN'S RESTROOM	VINYL PLANK	WOOD	TEXTURED GYP.	PAINTED GYP.



1  
A6.0CB  
COMMUNITY BUILDING FINISH PLAN - 1ST FLOOR  
SCALE: 1/4" = 1'-0"

JURISDICTION APPROVAL

ADDENDUM #1

STUDIO FINISH SCHEDULE				
NAME	FLOOR FINISH	BASE FINISH	WALL FINISH	CEILING FINISH
STUDIO				
BATH 1	VINYL PLANK	WOOD	TEXTURED GYP.	PAINTED GYP.
CLOSET	VINYL PLANK	WOOD	TEXTURED GYP.	PAINTED GYP.
ENTRY	VINYL PLANK	WOOD	TEXTURED GYP.	PAINTED GYP.
KITCHEN	VINYL PLANK	WOOD	TEXTURED GYP.	PAINTED GYP.
KITCHEN/DINING ROOM	VINYL PLANK	WOOD	TEXTURED GYP.	PAINTED GYP.
LAUNDRY	VINYL PLANK	WOOD	TEXTURED GYP.	PAINTED GYP.
LIVING SPACE	VINYL PLANK	WOOD	TEXTURED GYP.	PAINTED GYP.
LIVING/DINING ROOM	VINYL PLANK	WOOD	TEXTURED GYP.	PAINTED GYP.
MECH.	VINYL PLANK	WOOD	TEXTURED GYP.	PAINTED GYP.

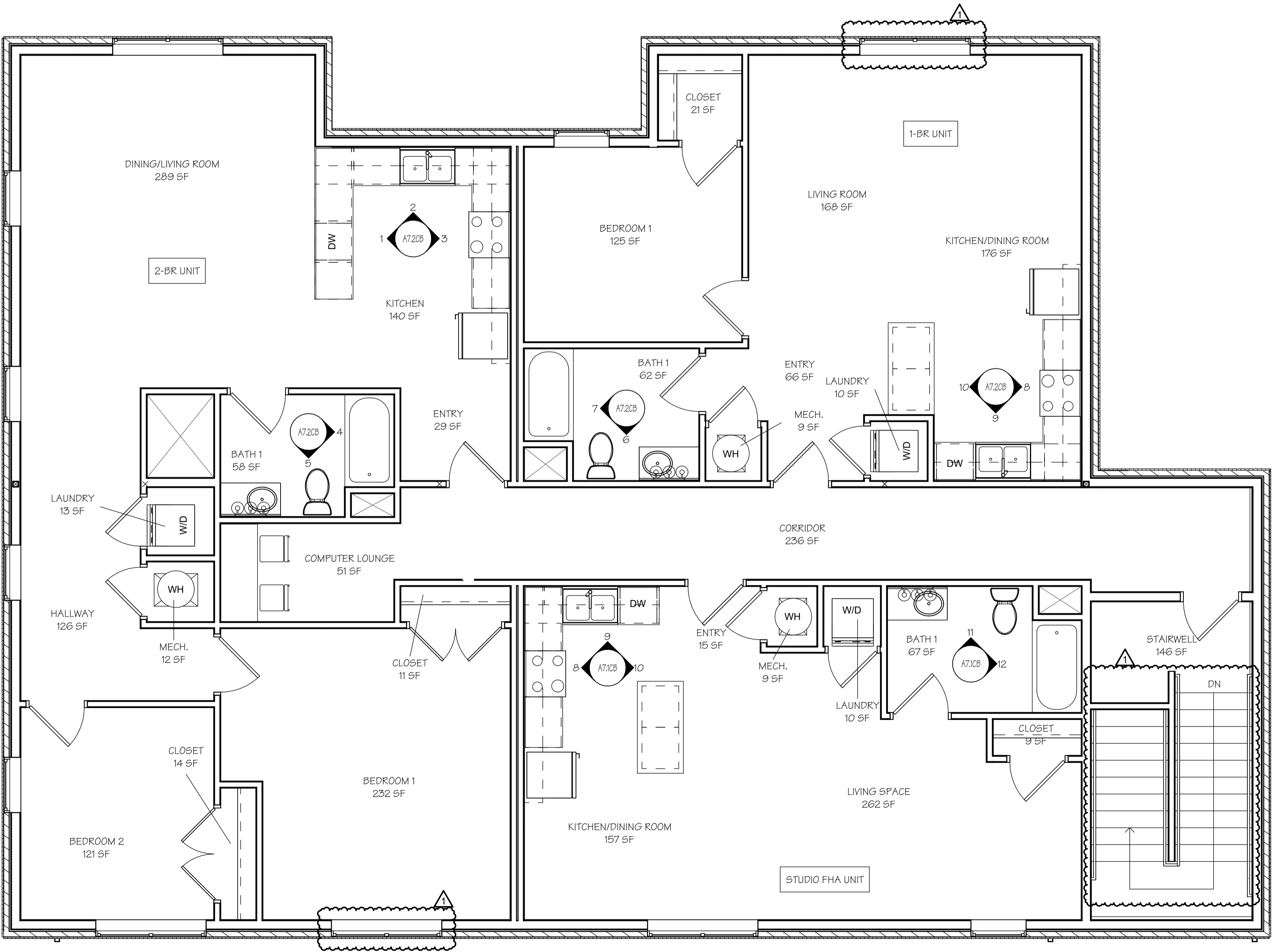
1-BR FINISH SCHEDULE				
NAME	FLOOR FINISH	BASE FINISH	WALL FINISH	CEILING FINISH
1-BR				
BATH 1	VINYL PLANK	WOOD	TEXTURED GYP.	PAINTED GYP.
BEDROOM 1	VINYL PLANK	WOOD	TEXTURED GYP.	PAINTED GYP.
CLOSET	VINYL PLANK	WOOD	TEXTURED GYP.	PAINTED GYP.
ENTRY	VINYL PLANK	WOOD	TEXTURED GYP.	PAINTED GYP.
KITCHEN/DINING ROOM	VINYL PLANK	WOOD	TEXTURED GYP.	PAINTED GYP.
LAUNDRY	VINYL PLANK	WOOD	TEXTURED GYP.	PAINTED GYP.
LIVING ROOM	VINYL PLANK	WOOD	TEXTURED GYP.	PAINTED GYP.
MECH.	VINYL PLANK	WOOD	TEXTURED GYP.	PAINTED GYP.

2-BR FINISH SCHEDULE				
NAME	FLOOR FINISH	BASE FINISH	WALL FINISH	CEILING FINISH
2-BR				
BATH 1	VINYL PLANK	WOOD	TEXTURED GYP.	PAINTED GYP.
BEDROOM 1	VINYL PLANK	WOOD	TEXTURED GYP.	PAINTED GYP.
BEDROOM 2	VINYL PLANK	WOOD	TEXTURED GYP.	PAINTED GYP.
CLOSET	VINYL PLANK	WOOD	TEXTURED GYP.	PAINTED GYP.
DINING/LIVING ROOM	VINYL PLANK	WOOD	TEXTURED GYP.	PAINTED GYP.
ENTRY	VINYL PLANK	WOOD	TEXTURED GYP.	PAINTED GYP.
HALLWAY	VINYL PLANK	WOOD	TEXTURED GYP.	PAINTED GYP.
KITCHEN	VINYL PLANK	WOOD	TEXTURED GYP.	PAINTED GYP.
LAUNDRY	VINYL PLANK	WOOD	TEXTURED GYP.	PAINTED GYP.
MECH.	VINYL PLANK	WOOD	TEXTURED GYP.	PAINTED GYP.

COMMON AREA FINISH SCHEDULE				
NAME	FLOOR FINISH	BASE FINISH	WALL FINISH	CEILING FINISH
COMM 2				
COMPUTER LOUNGE	VINYL PLANK	WOOD	TEXTURED GYP.	PAINTED GYP.
CORRIDOR	VINYL PLANK	WOOD	TEXTURED GYP.	PAINTED GYP.
STAIRWELL	VINYL PLANK AND RUBBER STAIR TREADS	WOOD	TEXTURED GYP.	PAINTED GYP.

## GENERAL UNIT NOTES

- 1) CONTRACTOR SHALL FURNISH ONE MAILBOX PER UNIT
- 2) CERTIFICATION OF R-49 CEILING INSULATION MUST BE POSTED IN ATTIC
- 3) FLOOR DRAIN SHALL BE UNDER PRV LINE OF WATER HEATER. DISH FLOOR TO DRAIN.
- 4) PROVIDE CARPET EDGES AS NECESSARY, DESIGNATED BY "CE"
- 5) PROVIDE: SOLID BLOCKING BEHIND GRAB BARS AND FUTURE GRAB BAR LOCATIONS, MINI BLINDS, SHOWER RODS, SHOWER HEADS, TOWEL BARS AND AROUND ALL HVAC S/A GRILLE BOOTS
- 6) INSTALL GRAB BARS WITH ROUND HEAD SCREWS RATHER THAN FLAT
- 7) ALL INTERIOR WALL SHALL HAVE 2X4 STUDS AT 16" ON CENTER WITH 1/2" GYP. BD, UNLESS TOTHERWISE DESIGNATED BY PLANS OR SPECS
- 8) ROOM SIZES GIVEN ON THIS SHEETS ARE APPROXIMATE FINISHED ROOM DIMENSIONS (GYP. BE. FACE TO GYP. BE. FACE).
- 9) SEAL CONCRETE FLOOR TO REDUCE MOISTURE PENETRATION. MOUSTURE CONTENT OF THE SLAB IS TO BE TESTED PRIOR TO ANY FLOOR COVERING INSTALLATION AND IS TO BE IN ACCORDANCE WITH THE APPROPRIATE INDUSTRY STANDARD FOR THE FINISH FLOORING TO BE APPLIED. SUBCONTRACTOR WILL BE REQUIRED TO PROVIDE DOCUMENTATION
- 10) COAT & BEDROOM CLOSETS SHALL HAVE EPOXY COATED WIRE SHELVEING W/ROD @ 5'-8" A.F.F.
- 11) PRIME & PAINT WALLS BEHIND MILLWORK
- 12) STAIN & SEAL MILLWORK AS SPECIFIED
- 13) APPLY SILICONE CAULK BETWEEN CONCRETE & BOTTOM OF THE DRYWALL
- 14) APPROPRIATELY SIZED BLINDS SHALL BE PROVIDED & INSTALLED AT EACH GLAZED OPENING, INCLUDING PAIRED WINDOWS (PROVIDED W/TWO SETS) & DOOR GLAZING HALF LITES
- 15) SUBMIT SAMPLES OF FLOOR TRANSITIONS FOR APPROVAL OF COLOR & TYPE
- 16) IF ALTERNATE FLORING IS SELECTED, ADDITIONAL TRANSITION STRIPS WILL BE REQUIRED



## COMMUNITY BUILDING FINSH PLAN - 2ND FLOOR

SCALE: 1/4" = 1'-0"



HARMONY CENTER  
OKLAHOMA CITY, OKLAHOMA COUNTY,  
OKLAHOMA

Wallace  
ARCHITECTS L.L.C.  
Columbia, MO  
P 573-258-7200  
WALLACE ARCHITECTS, LLC

COPYRIGHT © 2021  
1ST ISSUE  
08 OCT 2021

ISSUE/REVISIONS  
08 OCT 2021 ISSUE SET  
25 JAN 2022 ADDENDUM #1

SHEET NO.  
A6.1CB

JOB NO.  
3849

JURISDICTION APPROVAL

ADDENDUM #1



HARMONY CENTER  
OKLAHOMA CITY, OKLAHOMA COUNTY,  
OKLAHOMA

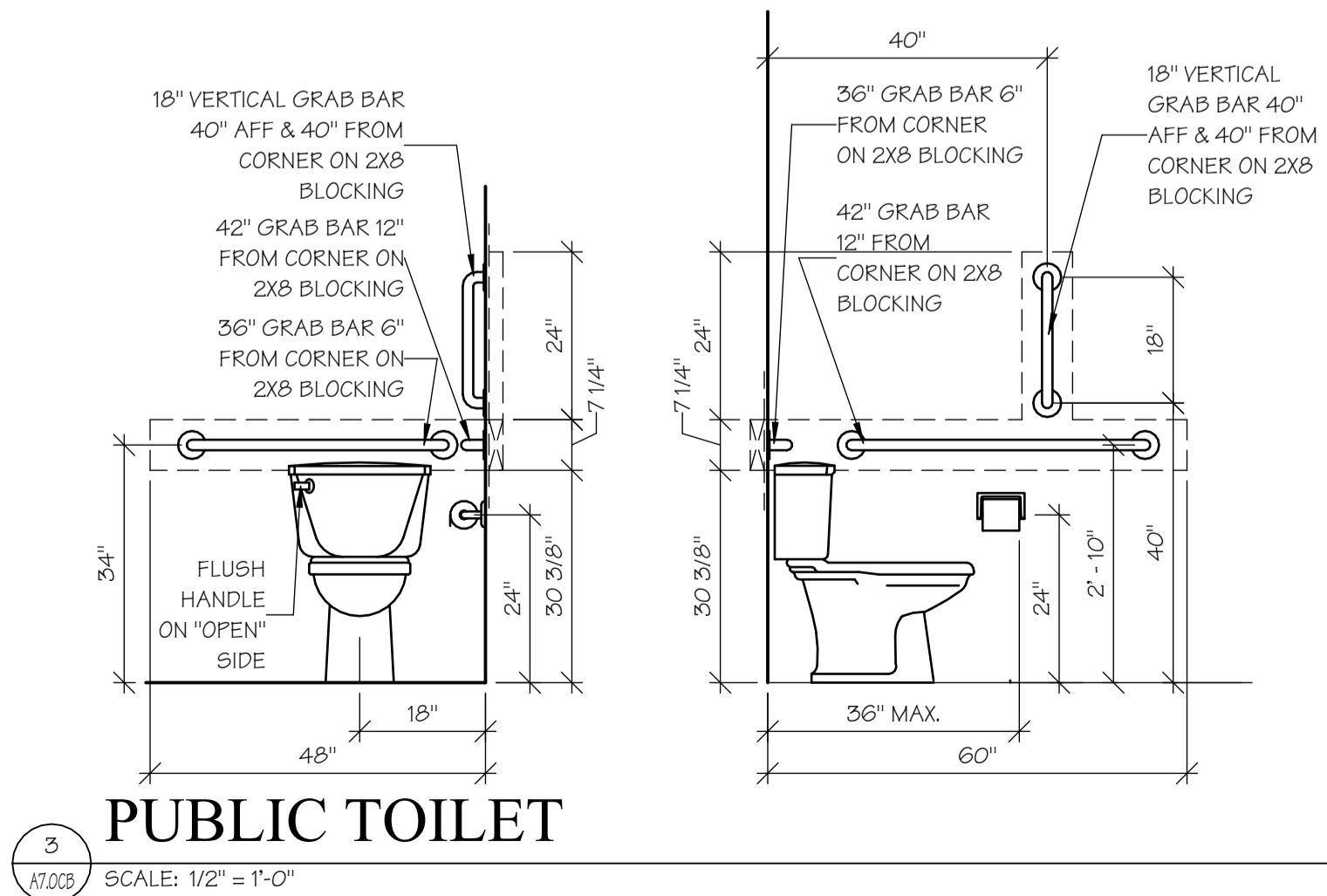
Wallace  
ARCHITECTS L.L.C.  
Columbia, MO  
P 573-258-7200

COPYRIGHT © 2021  
1ST ISSUE  
08 OCT 2021

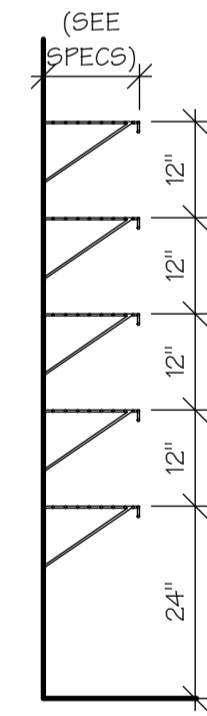
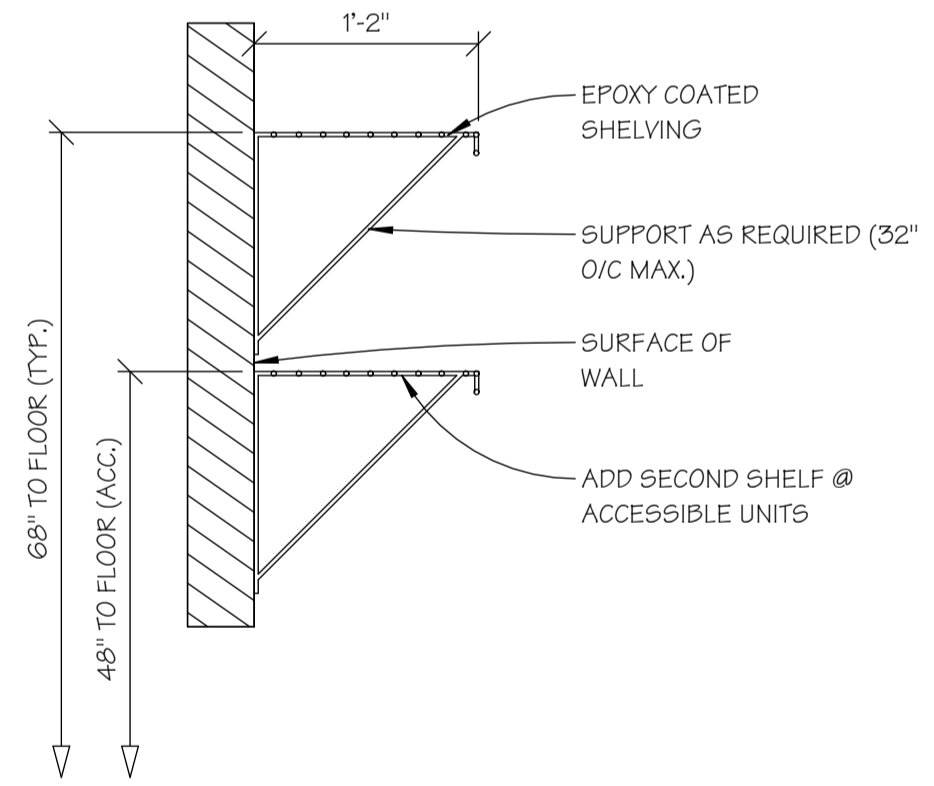
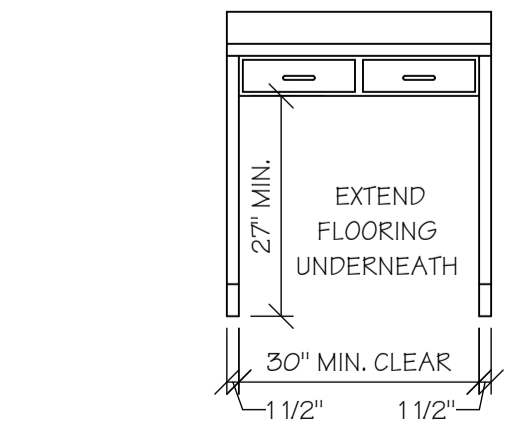
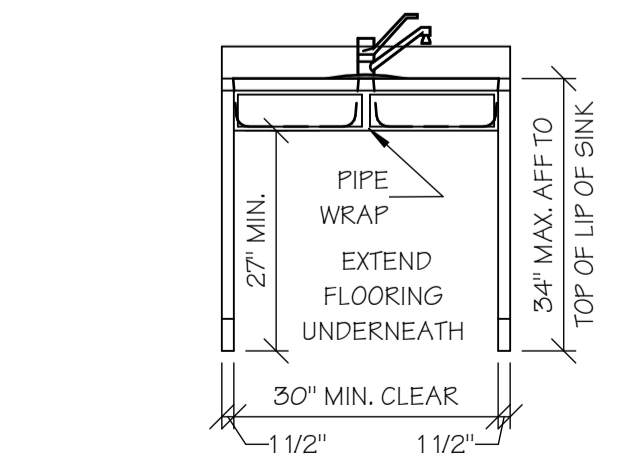
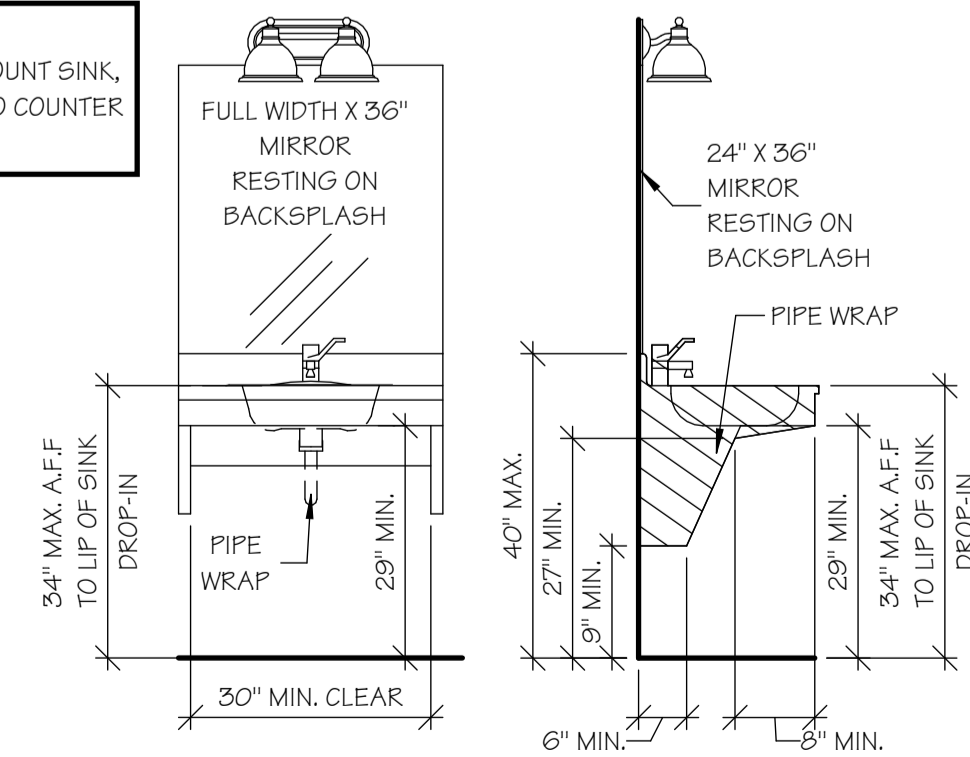
ISSUE/REVISIONS	
NO.	DESCRIPTION

A7.0CB  
SHEET NO.

JOB NO.  
3849

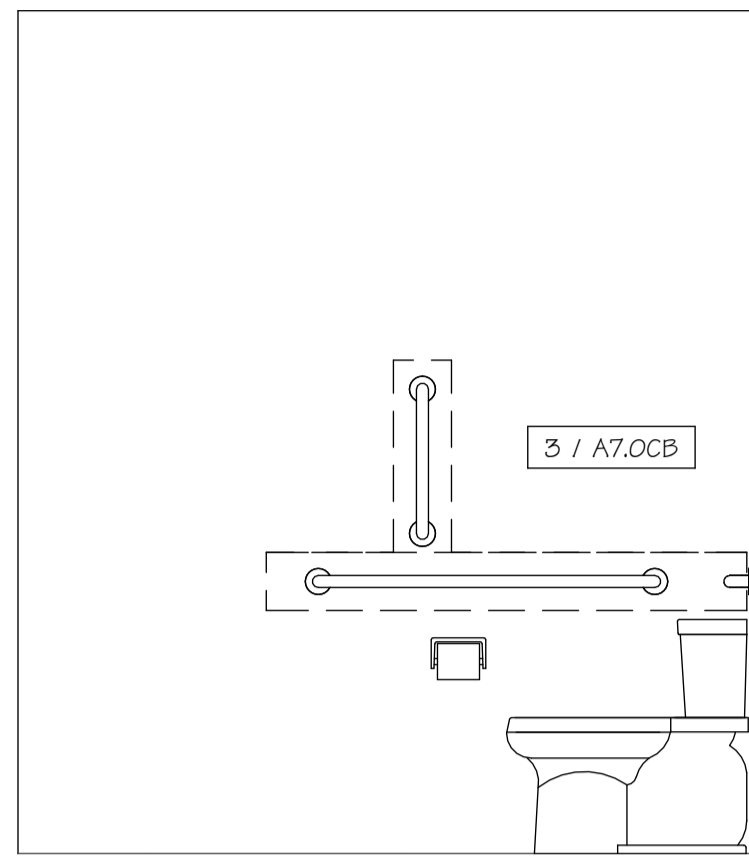


NOTE:  
IF UNDER MOUNT SINK,  
MEASURE TO COUNTER  
TOP



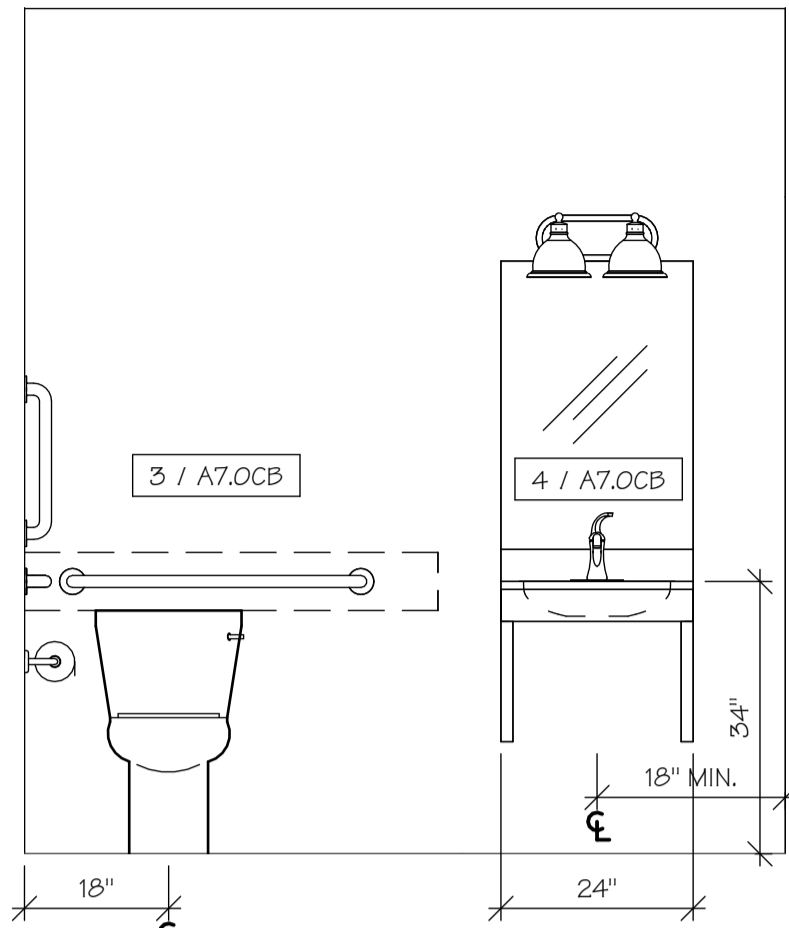
JURISDICTION APPROVAL

ISSUE SET



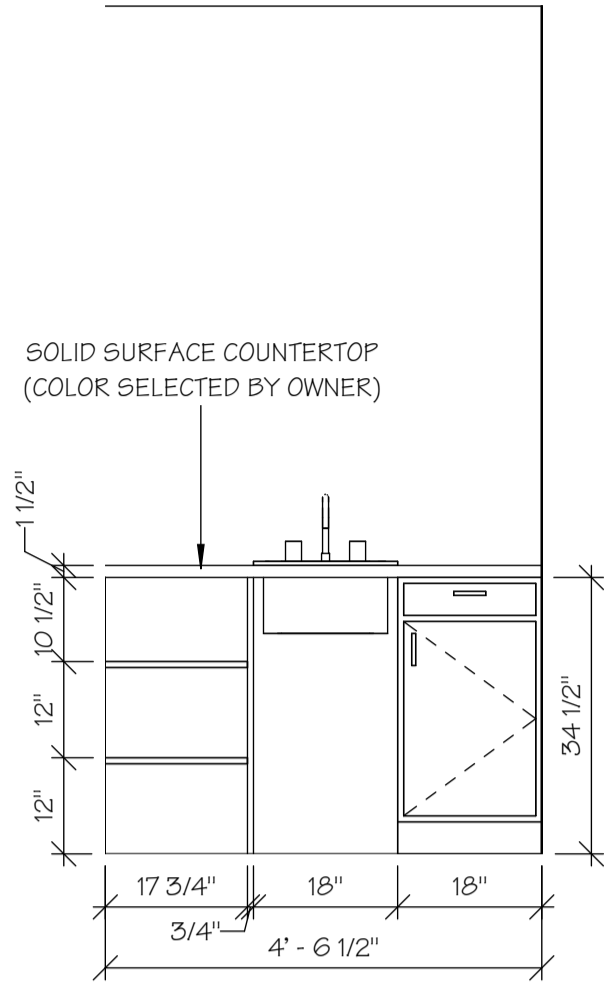
RESTROOM  
ELEVATION 1

1  
A7.OCB SCALE: 1/2" = 1'-0" (WOMEN'S RESTROOM MIRRORED)



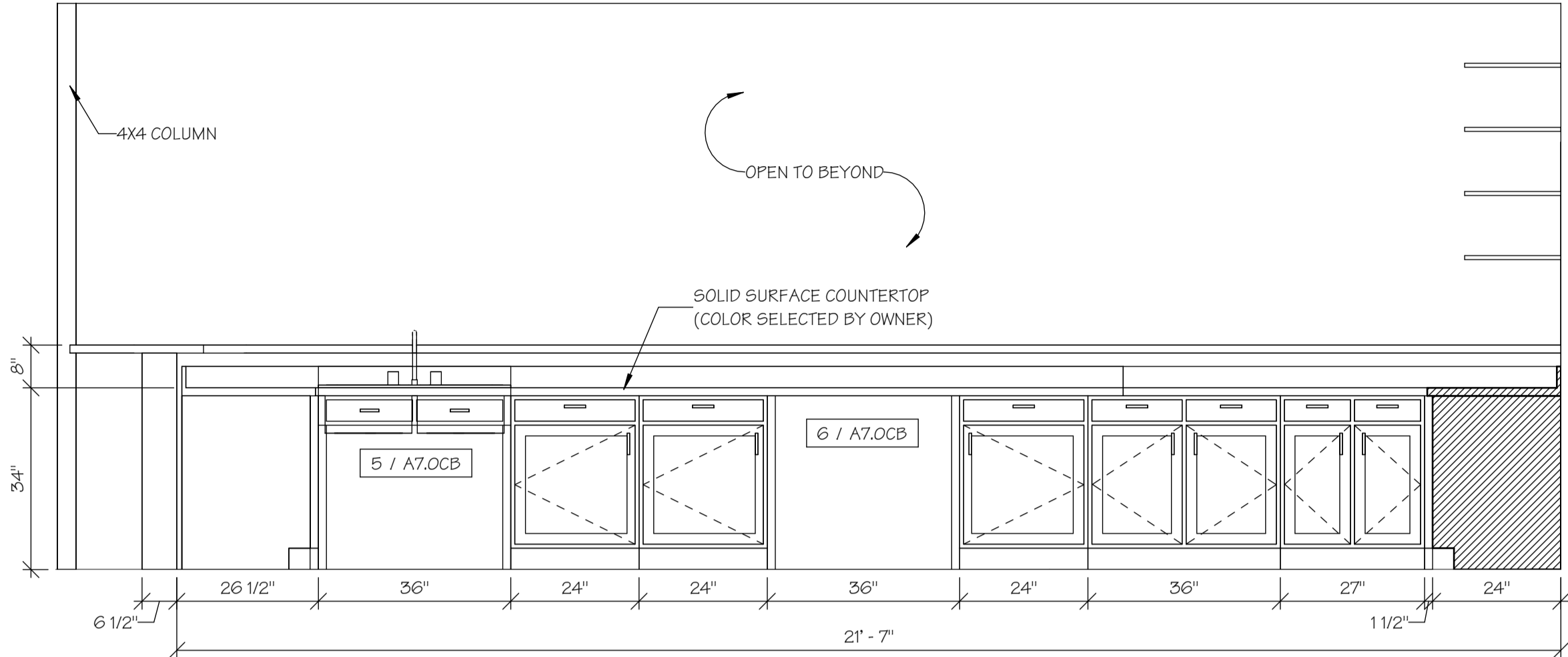
RESTROOM  
ELEVATION 2

2  
A7.OCB SCALE: 1/2" = 1'-0" (WOMEN'S RESTROOM MIRRORED)



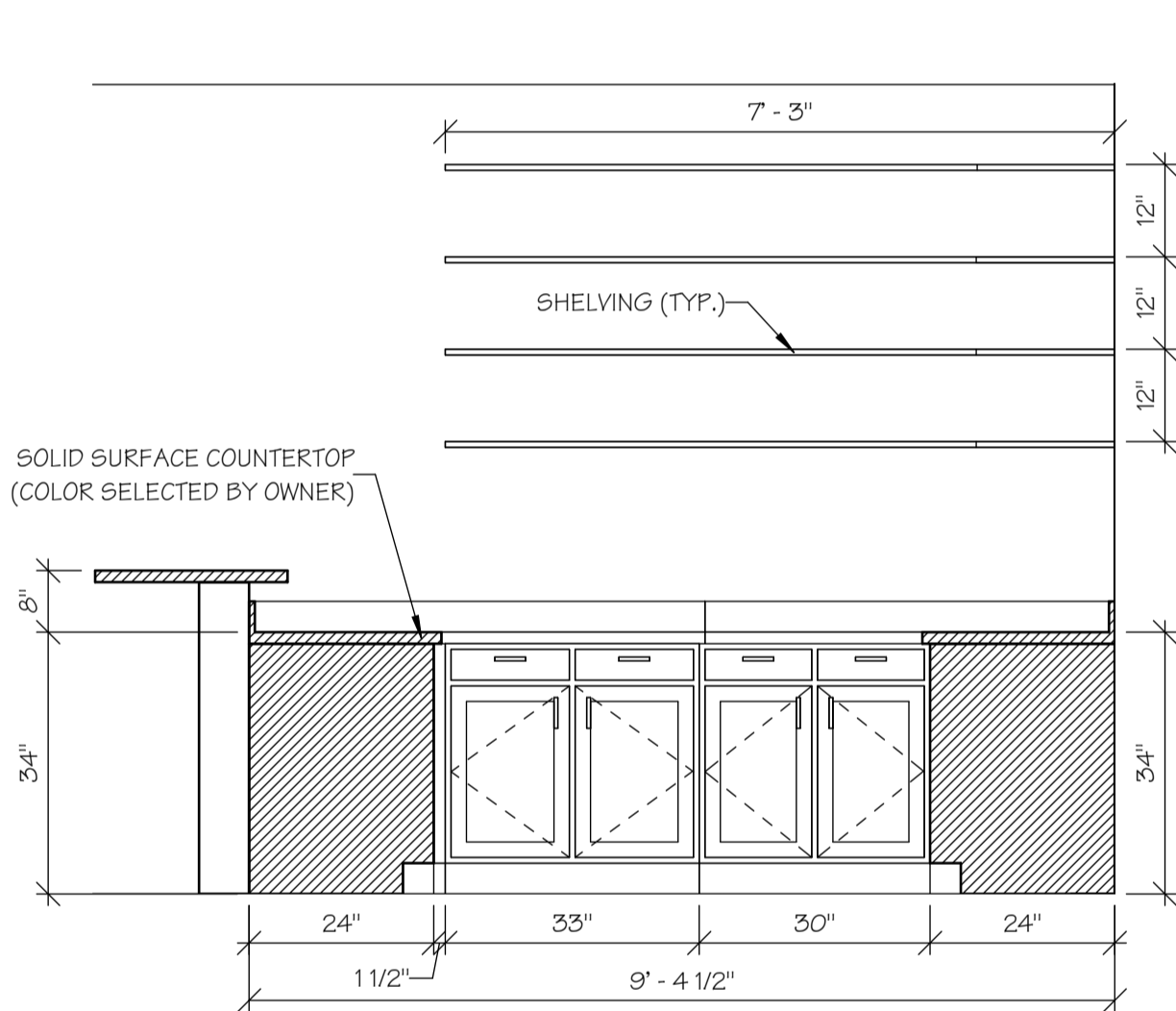
SALON ELEVATION

3  
A7.1CB SCALE: 1/2" = 1'-0"



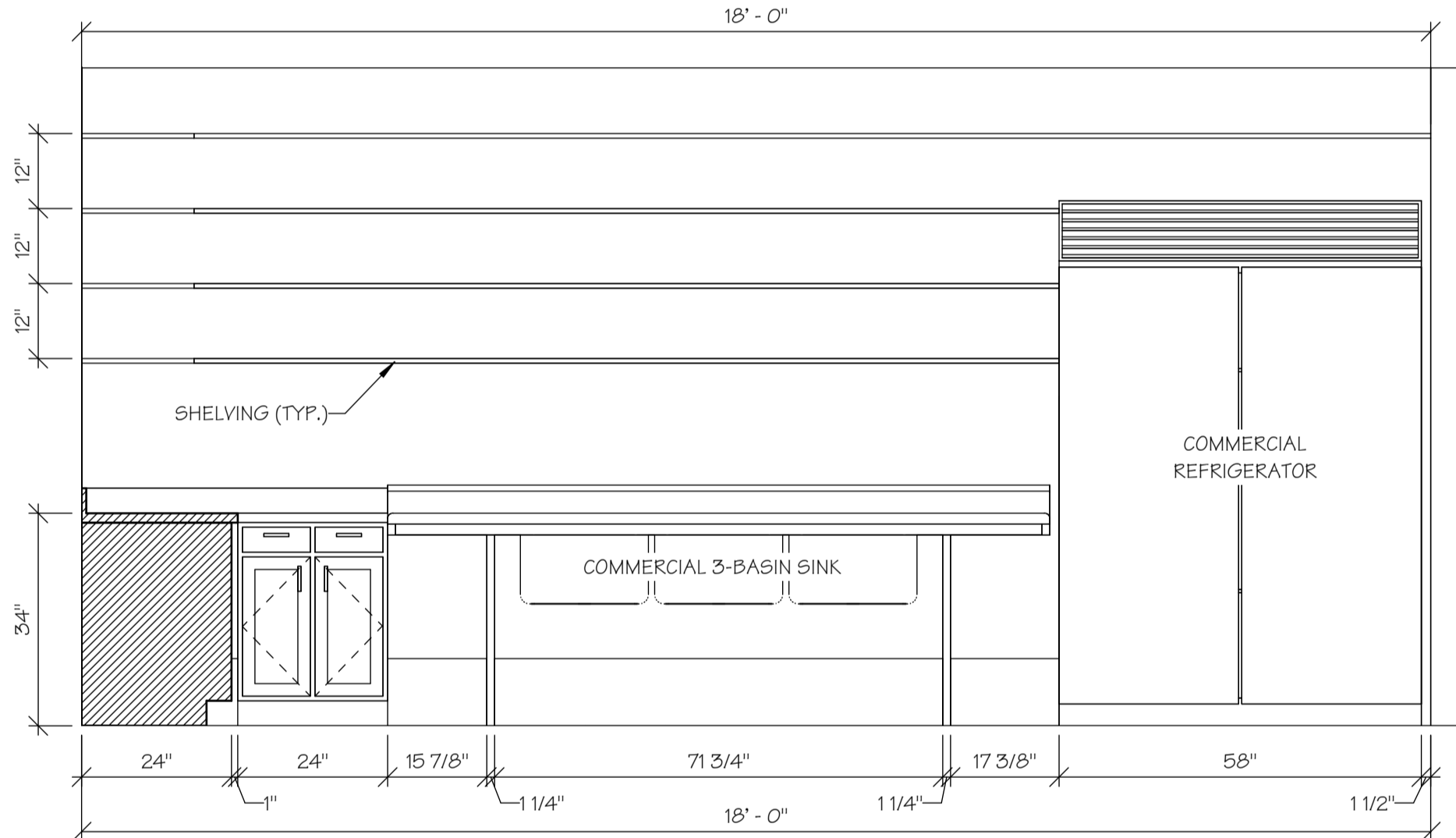
KITCHENETTE ELEVATION 1

4  
A7.OCB SCALE: 1/2" = 1'-0"



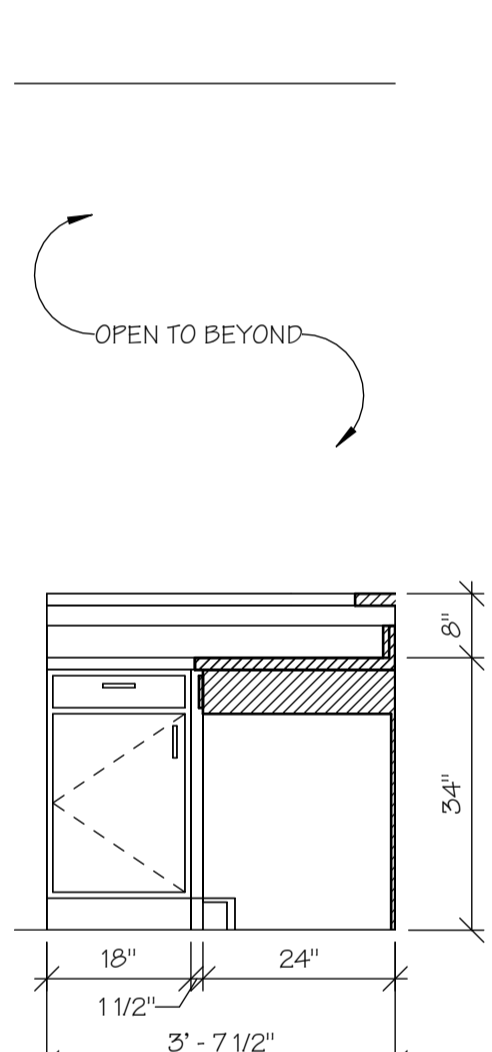
KITCHENETTE ELEVATION 2

5  
A7.OCB SCALE: 1/2" = 1'-0"



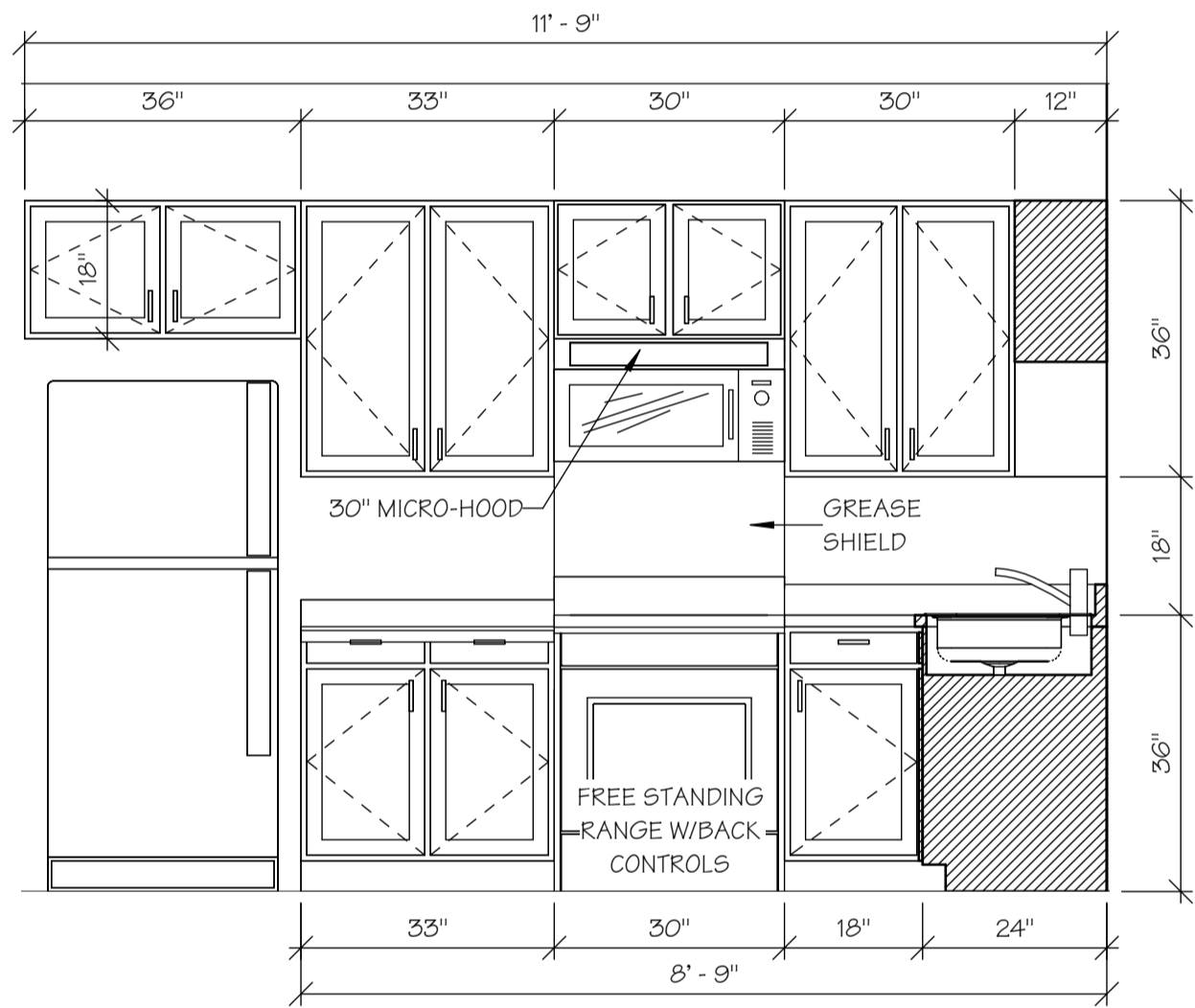
KITCHENETTE ELEVATION 3

6  
A7.OCB SCALE: 1/2" = 1'-0"



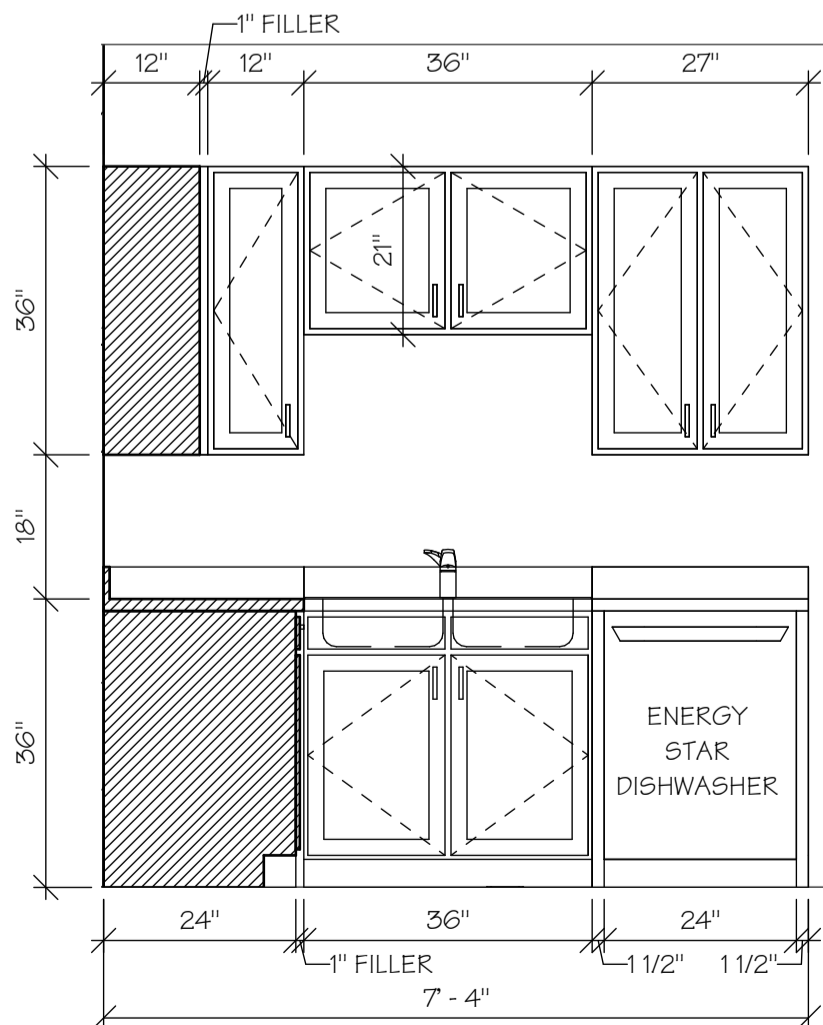
KITCHENETTE  
ELEVATION 4

7  
A7.1CB SCALE: 1/2" = 1'-0"



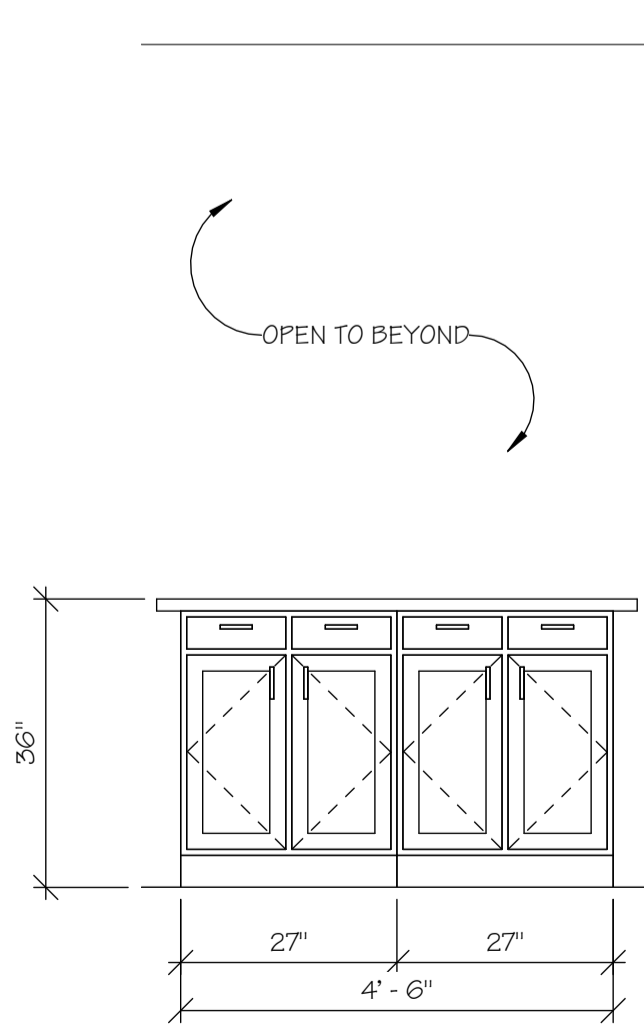
STUDIO UNIT  
KITCHEN ELEVATION 1

8  
A7.OCB SCALE: 1/2" = 1'-0"



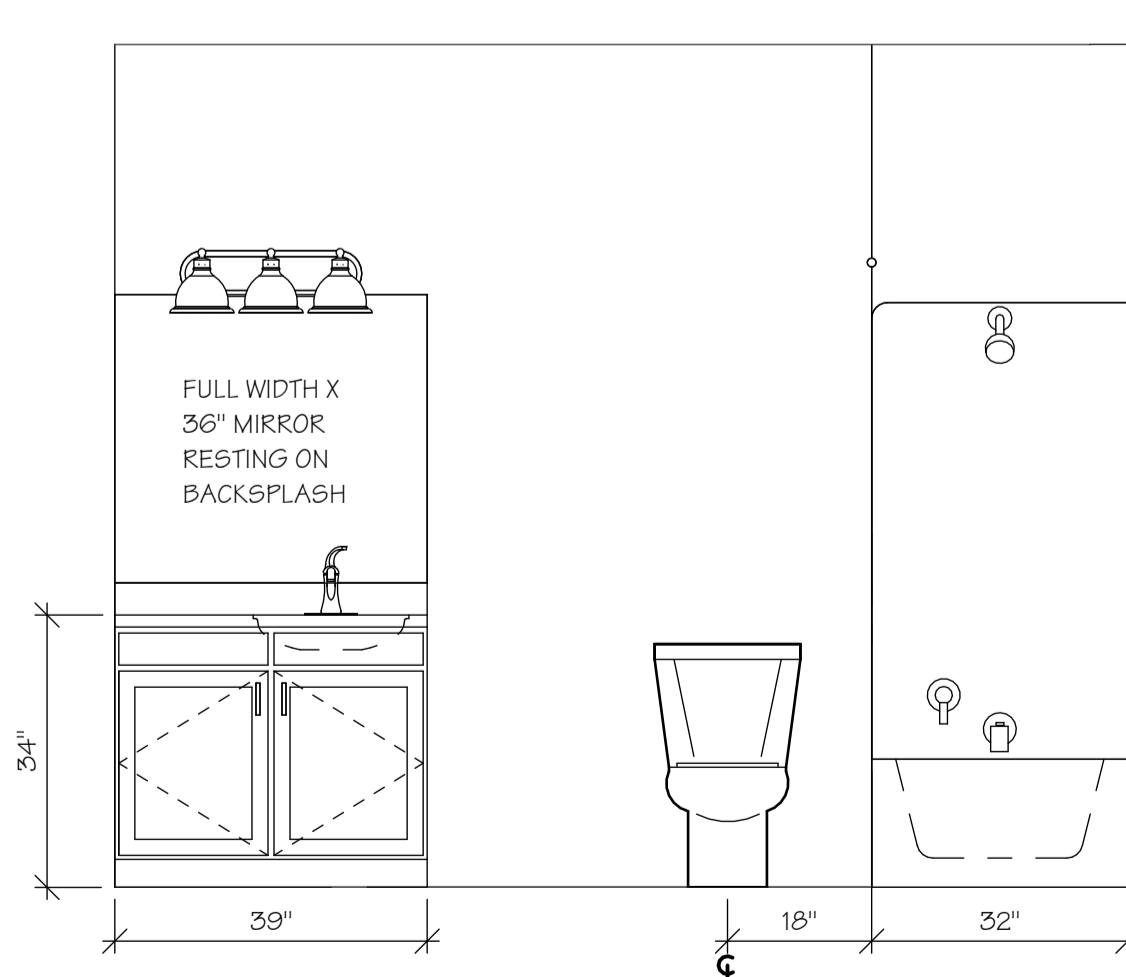
STUDIO UNIT  
KITCHEN ELEVATION 2

9  
A7.OCB SCALE: 1/2" = 1'-0"



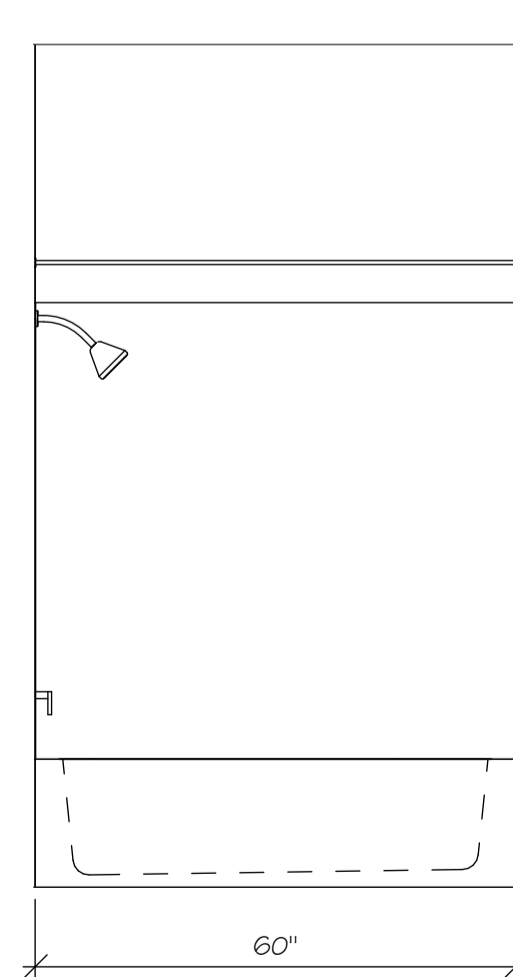
STUDIO UNIT  
KITCHEN ELEVATION 3

10  
A7.OCB SCALE: 1/2" = 1'-0"



STUDIO UNIT  
BATH 1 ELEVATION 1

11  
A7.OCB SCALE: 1/2" = 1'-0"



STUDIO UNIT  
BATH 1 ELEVATION 2

12  
A7.OCB SCALE: 1/2" = 1'-0"

JURISDICTION APPROVAL

ISSUE SET



HARMONY CENTER  
OKLAHOMA CITY, OKLAHOMA COUNTY,  
OKLAHOMA

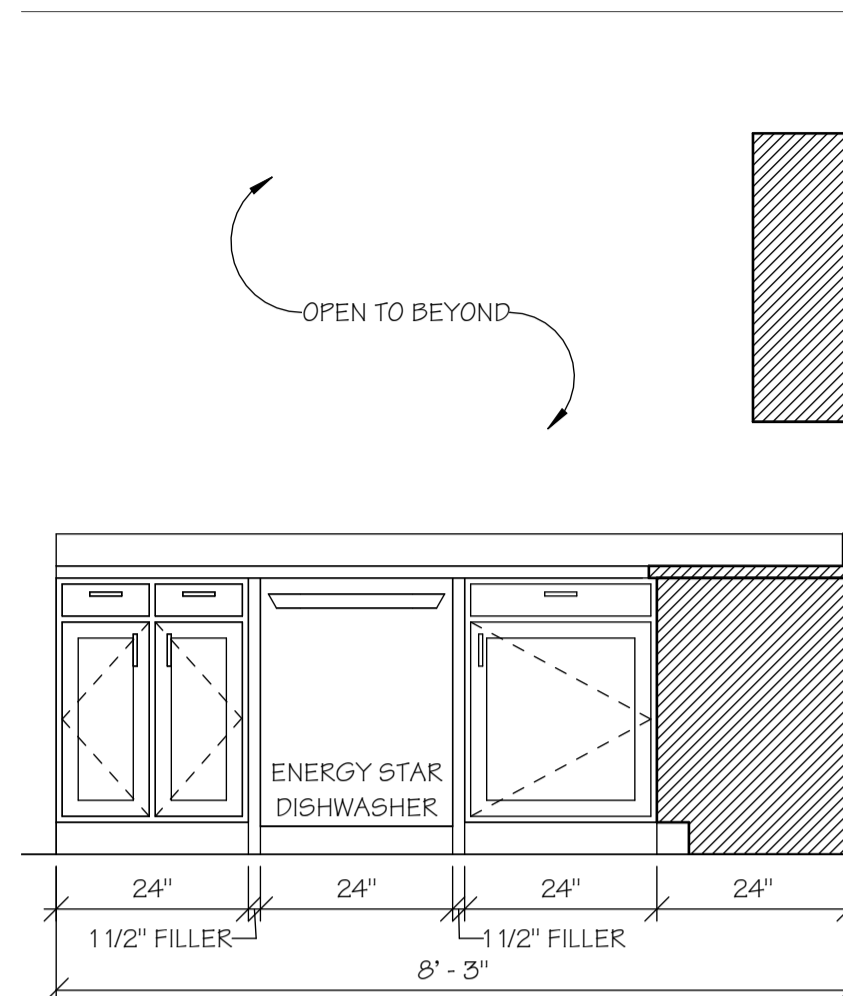
Wallace  
ARCHITECTS, L.L.C.  
Columbia, MO  
P 573-258-7200

COPYRIGHT © 2021  
1ST ISSUE  
08 OCT 2021

ISSUE/REVISIONS  
08 OCT 2021 ISSUE SET

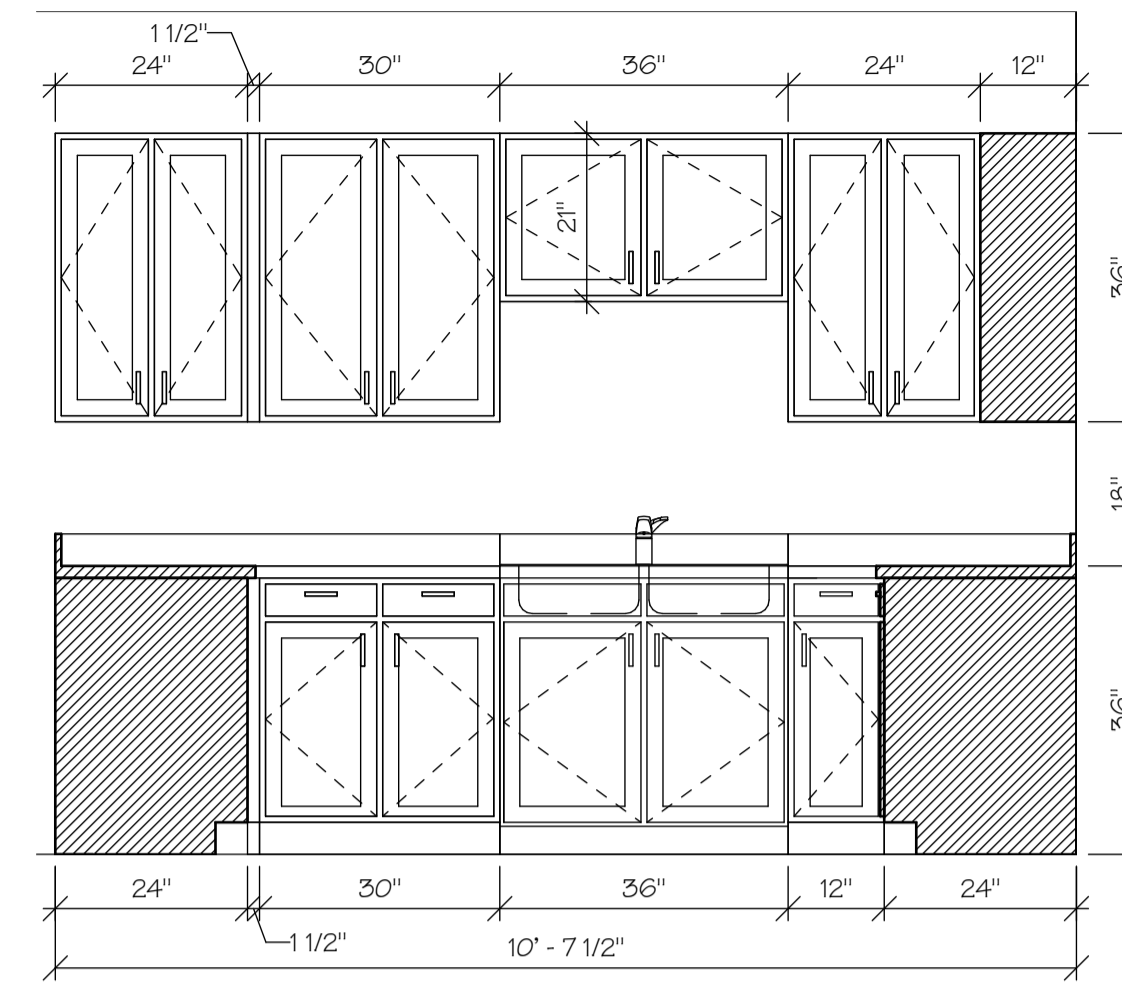
A7.1CB

JOB NO.  
3849



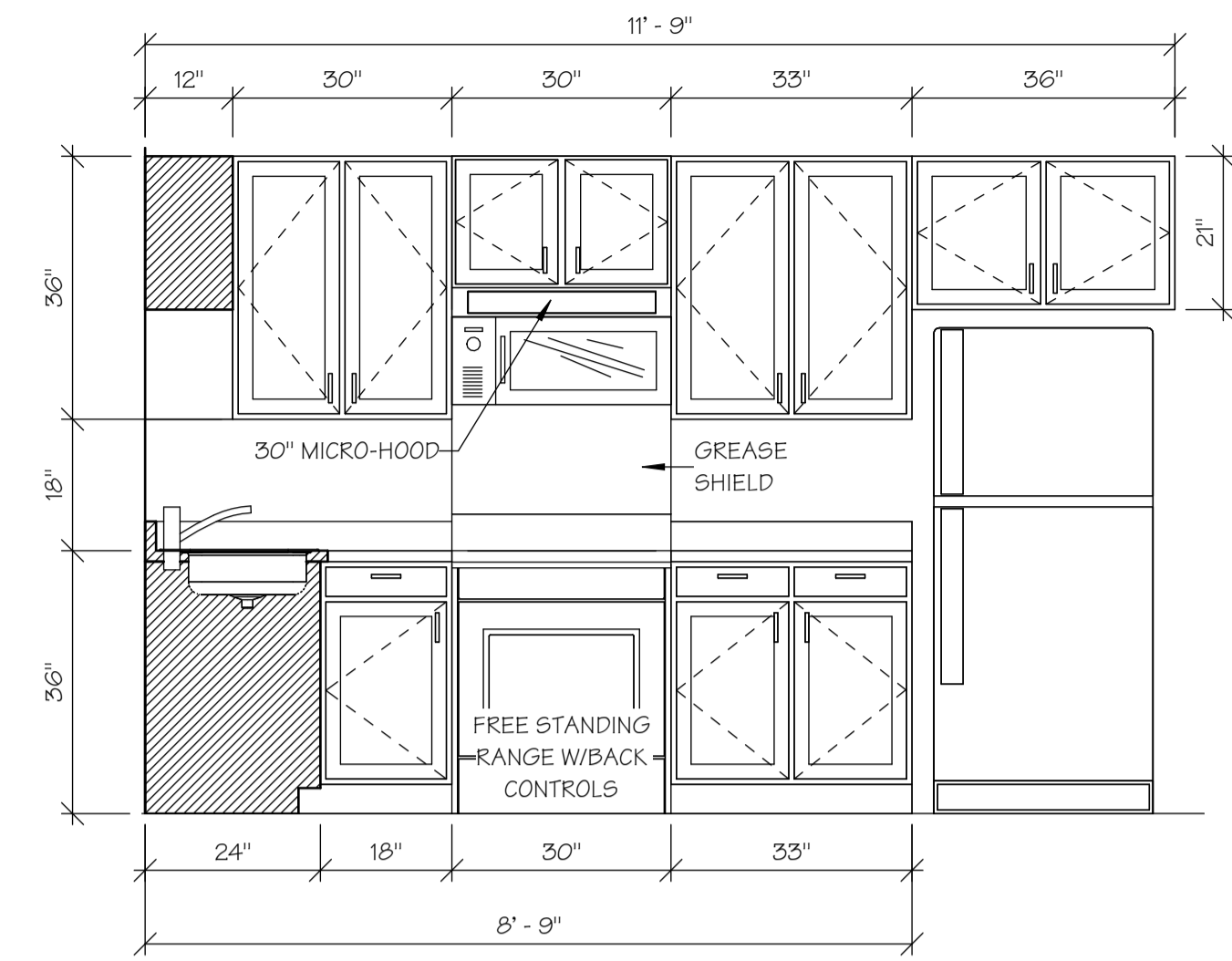
2-BR UNIT  
KITCHEN ELEVATION 1

1  
A7.2CB  
SCALE: 1/2" = 1'-0"



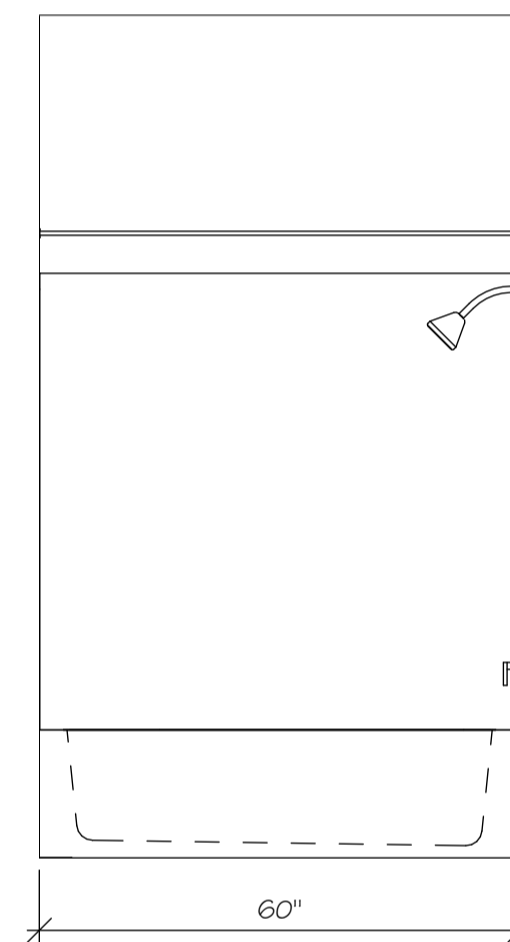
2-BR UNIT  
KITCHEN ELEVATION 2

2  
A7.2CB  
SCALE: 1/2" = 1'-0"



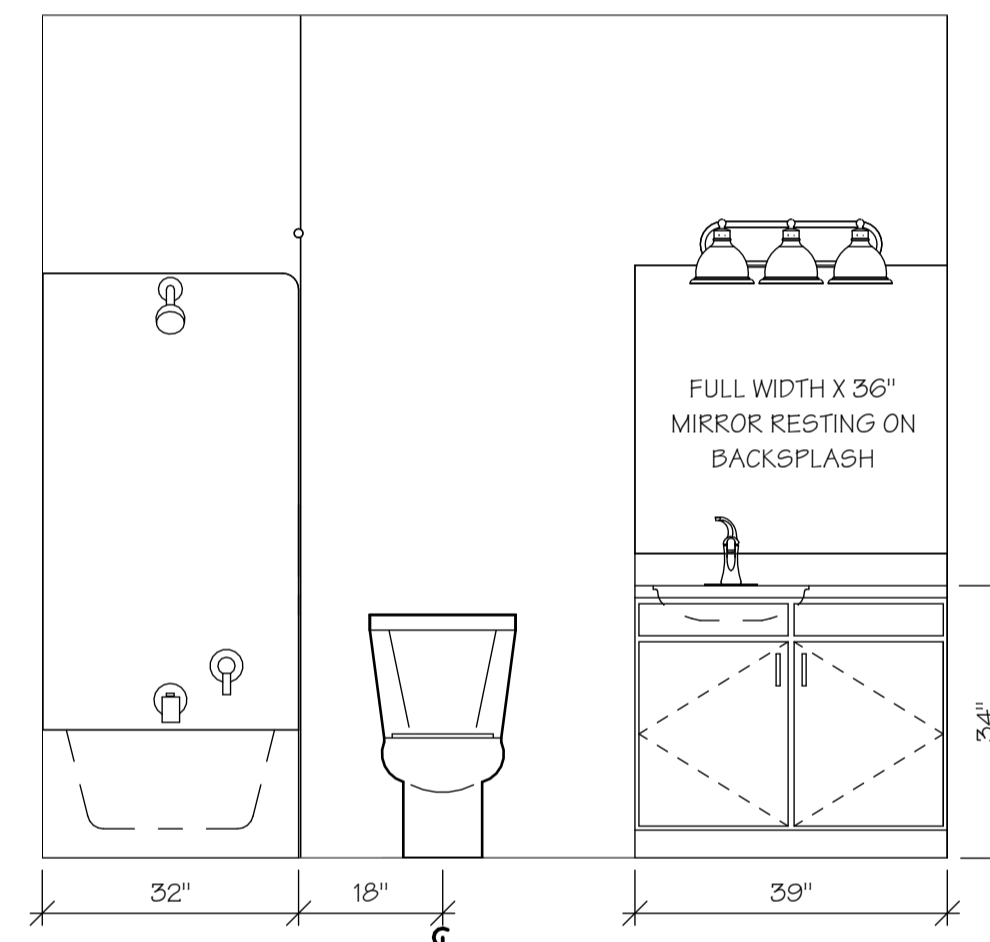
2-BR UNIT  
KITCHEN ELEVATION 3

3  
A7.2CB  
SCALE: 1/2" = 1'-0"



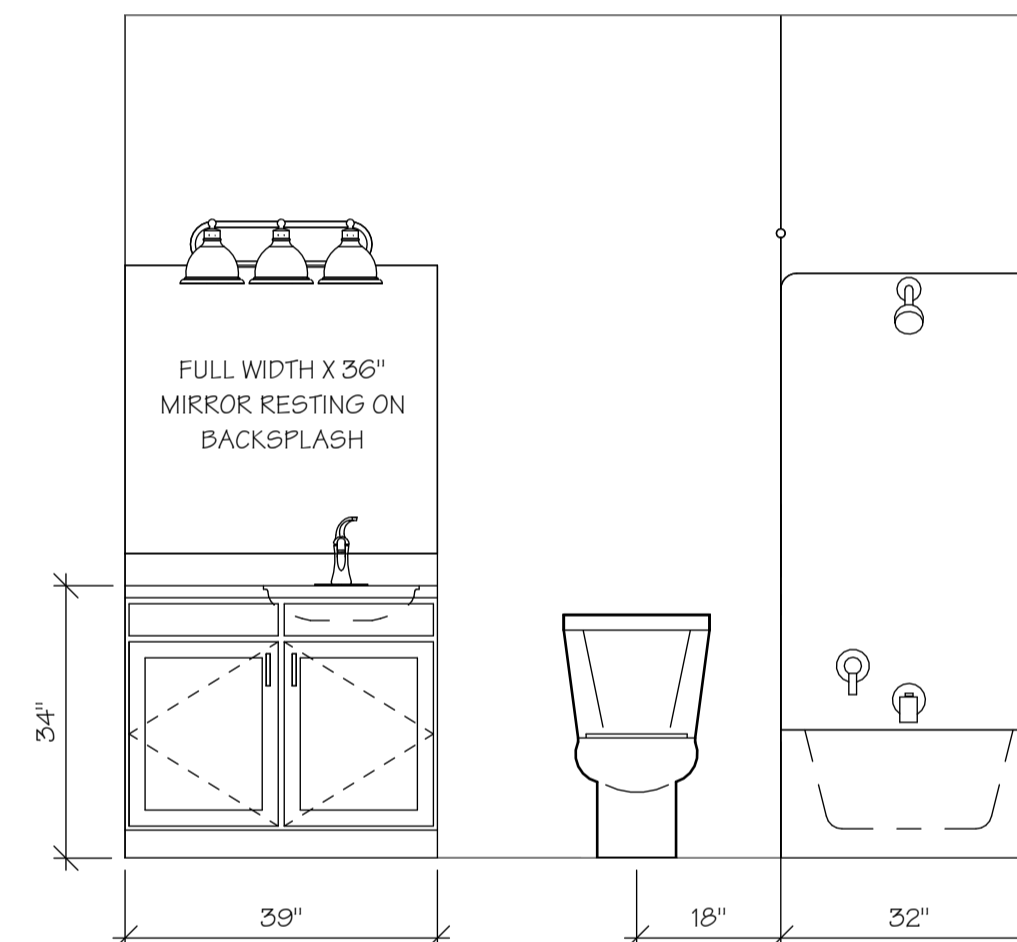
2-BR UNIT  
BATH 1 ELEVATION 1

4  
A7.2CB  
SCALE: 1/2" = 1'-0"



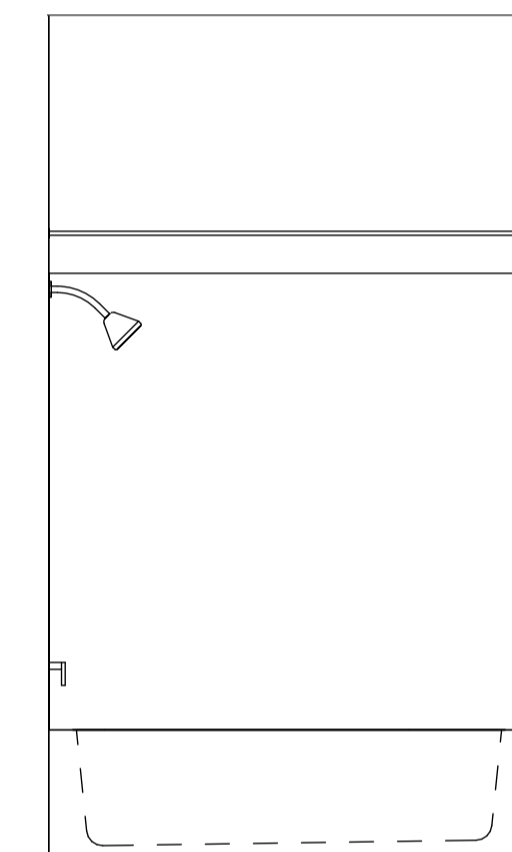
2-BR UNIT  
BATH 1 ELEVATION 2

5  
A7.2CB  
SCALE: 1/2" = 1'-0"



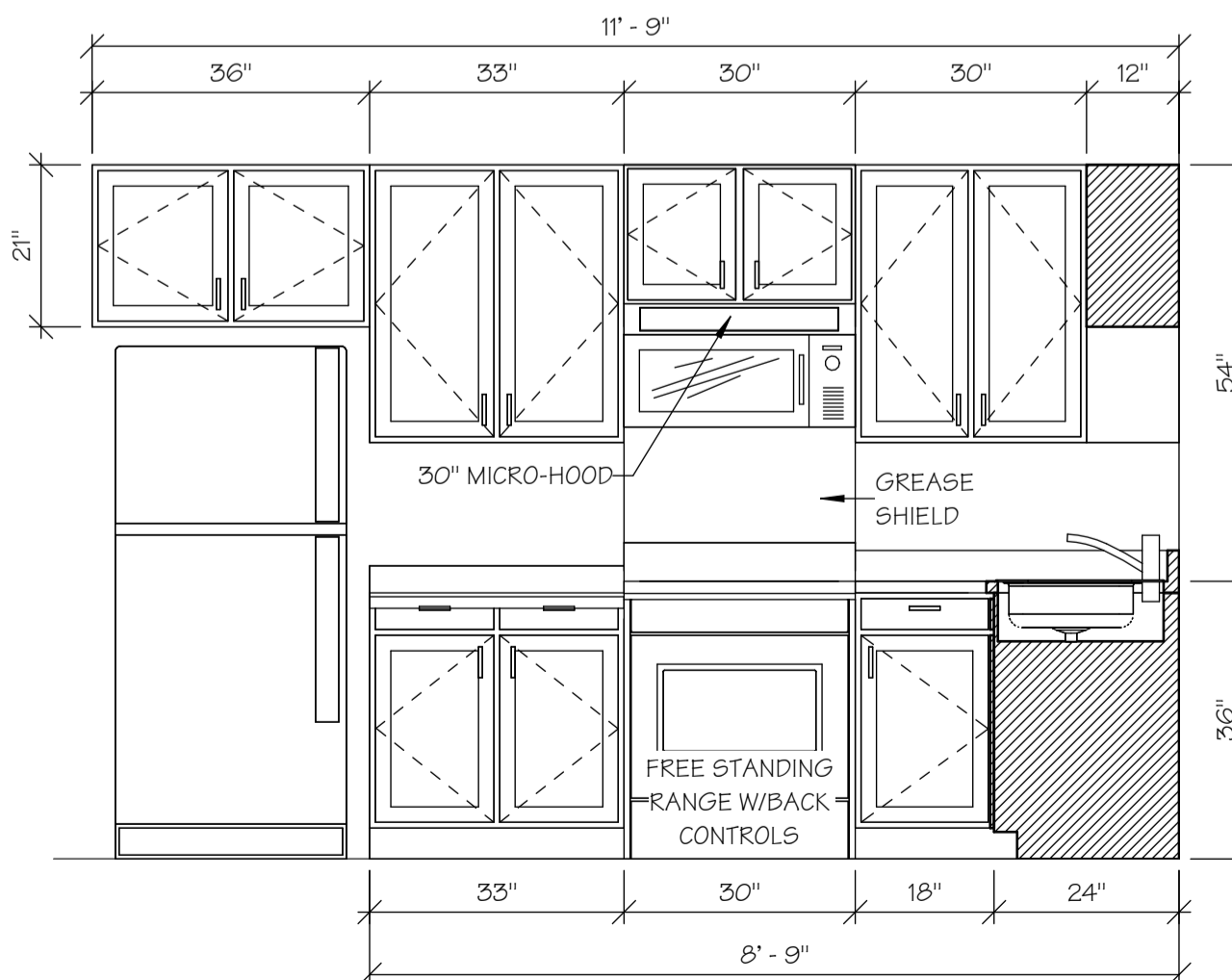
1-BR UNIT  
BATH 1 ELEVATION 1

6  
A7.2CB  
SCALE: 1/2" = 1'-0"



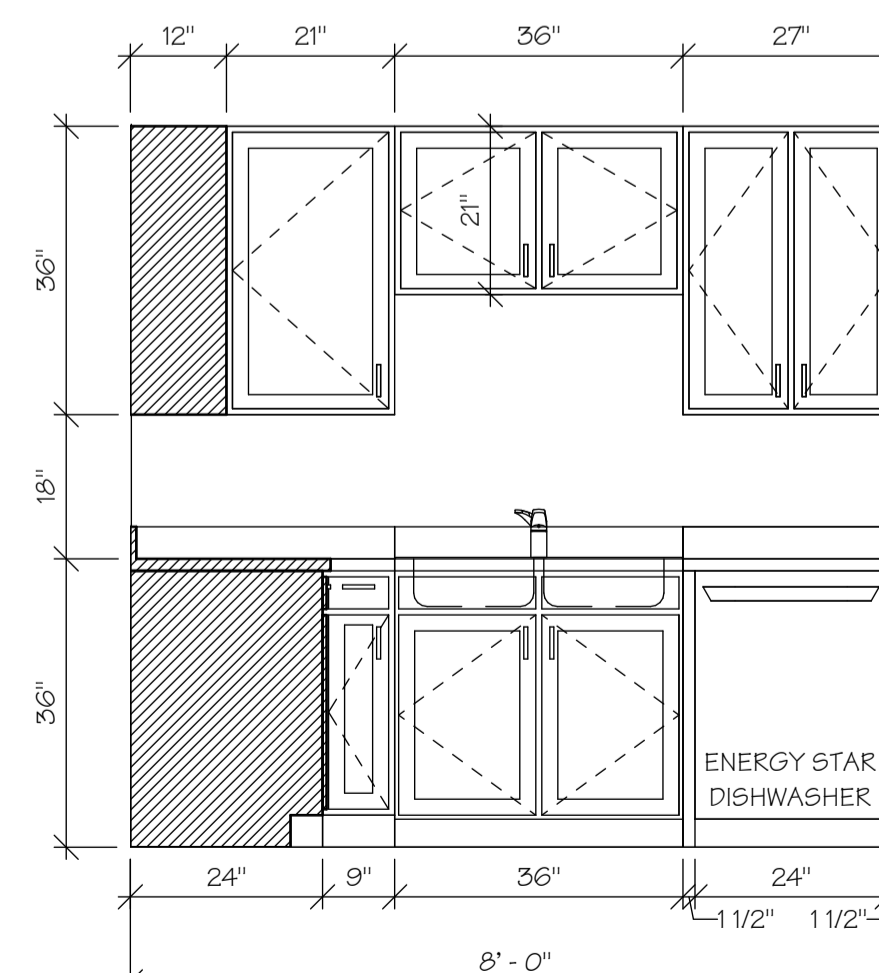
1-BR UNIT  
BATH 1 ELEVATION 2

7  
A7.2CB  
SCALE: 1/2" = 1'-0"



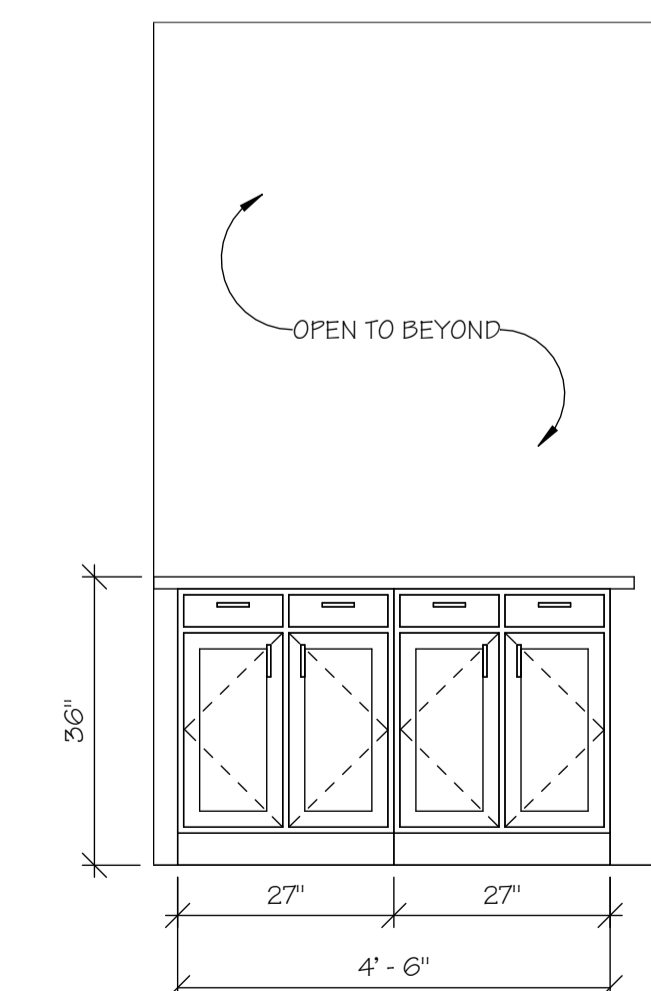
1-BR UNIT  
KITCHEN ELEVATION 1

8  
A7.2CB  
SCALE: 1/2" = 1'-0"



1-BR UNIT  
KITCHEN ELEVATION 2

9  
A7.2CB  
SCALE: 1/2" = 1'-0"



1-BR UNIT  
KITCHEN ELEVATION 3

10  
A7.2CB  
SCALE: 1/2" = 1'-0"

JURISDICTION APPROVAL

ISSUE SET