

MLW S-13 AND RS-23 LOCOMOTIVES



- **THE ICONIC MLW SWITCHING LOCOMOTIVE OPERATING ACROSS CANADA FOR OVER 50 YEARS**
- **PROTOTYPICALLY CORRECT S-13 AND RS-23 DETAILS PER ROADNAME**
- **HEAVY DIE-CAST FRAME FOR THE ULTIMATE PULLING POWER!**

**M
S
R
P**

No Sound: \$309.95 CAD
w/SOUND: \$449.95 CAD

No Sound: \$249.95 USD
w/SOUND: \$359.95 USD



Rapido is proud to announce the Montreal Locomotive Works S-13 and RS-23 locomotives! These two models are virtually identical from the frame up. In fact, they both used the same MLW-style switcher body and underframe of the previous S-11 and S-12 designs. Under the hood both used an ALCO 251c prime mover which generated 1,000hp. The major difference between the two versions was the S-13 rode on “switching style” AAR trucks while the RS-23 utilized road trucks.

British Columbia (formerly PGE) received the first MLW S-13s with an order of three, delivered in January 1959. Canadian National was the largest owner of S-13s, rostering 49 units with the first also arriving in 1959. Of these, 26 were assigned hump service in sets of three units. These were a variety of paint schemes for both BCR and CN before being retired or sold to short lines.

Canadian Pacific was the largest owner of the RS-23 locomotives with a total of 34 built between August and September of 1959. These were classified as “Diesel Road Switcher, 1,000hp” (DRS-10c). Initially assigned to Ontario, the RS-23s were reassigned to the Atlantic Region and Saskatchewan. It was not uncommon to see them working in sets of four or five units in northern Saskatchewan on branchline freights. Out in the Maritimes, the RS-23s could be seen in the same capacity, albeit in smaller sets of two to three units. As road switchers, CP’s RS-23s often ran in multiple with larger 4-axle and 6-axle freight locomotives. During CP’s motive power shortage in the late 1980s and early 1990s, the RS-23s worked hard in mainline freight duty. By the late-1990s, CP retired its fleet but many continue to survive on short lines throughout North America.

THE S-13 / RS-23 LOCOMOTIVE FEATURES:

- Heavy die-cast frame with many separate details
- Correct Canadian-style AAR or MLW lightweight trucks
- Photo-etched radiator grilles
- Road-specific fuel tanks
- Traction motor details on trucks
- New thinwall cab design with complete interior lighting
- Prototypically correct tread patterns on walkways
- CN S-13s feature strobe “fink light” on roof where appropriate
- Metal grab irons
- Rapido’s innovative dead-straight metal handrails with plastic stanchions
- Rubber air and sanding lines
- MoPower capacitor system for uninterrupted DCC running
- DC/DCC ready or Dual-Mode DCC/Sound (Recorded from a real S-13!)
- Suggested minimum radius: 18”

CONTACT YOUR RETAILER OR ORDER DIRECT AT RAPIDOTRAINS.COM & RAPIDOTRAINS.CA

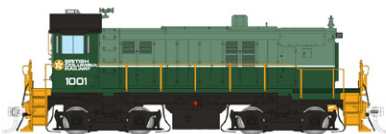


CANADA: 500 ALDEN ROAD • UNIT 21 • MARKHAM • ONTARIO • L3R 5H5
USA: 382 HIGH STREET • BUFFALO • NEW YORK • 14204
Tel. 905.474.3314. Toll Free 1-855-LRC-6917. Fax. 905.474.3325.

RAPIDO



MLW S-13 AND RS-23 LOCOMOTIVES



British Columbia Railway – S-13 Two-Tone Green Scheme

Road #	Item # (DC/Silent)	Item # (DC/DCC/Sound)
1001	36001 <input type="text"/>	36501 <input type="text"/>
1002	36002 <input type="text"/>	36502 <input type="text"/>
1003	36003 <input type="text"/>	36503 <input type="text"/>



British Columbia Railway – S-13 Green Lightning Stripe Scheme

Road #	Item # (DC/Silent)	Item # (DC/DCC/Sound)
1001	36004 <input type="text"/>	36504 <input type="text"/>
1002	36005 <input type="text"/>	36505 <input type="text"/>



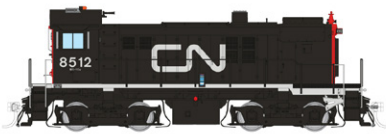
BC Rail – S-13 Red, White and Blue - Hockey Stick Scheme

Road #	Item # (DC/Silent)	Item # (DC/DCC/Sound)
503	36006 <input type="text"/>	36506 <input type="text"/>
1003	36007 <input type="text"/>	36507 <input type="text"/>



Canadian National Railway – S-13 Delivery Scheme

Road #	Item # (DC/Silent)	Item # (DC/DCC/Sound)
8500	36008 <input type="text"/>	36508 <input type="text"/>
8506	36009 <input type="text"/>	36509 <input type="text"/>
8521	36010 <input type="text"/>	36510 <input type="text"/>



Canadian National – S-13 Noodle Scheme

Road #	Item # (DC/Silent)	Item # (DC/DCC/Sound)
8512	36011 <input type="text"/>	36511 <input type="text"/>
8514	36012 <input type="text"/>	36512 <input type="text"/>
8517	36013 <input type="text"/>	36513 <input type="text"/>



Canadian National – S-13 Noodle Scheme w/Red Cab

Road #	Item # (DC/Silent)	Item # (DC/DCC/Sound)
8513	36014 <input type="text"/>	36514 <input type="text"/>
8515	36015 <input type="text"/>	36515 <input type="text"/>
8519	36016 <input type="text"/>	36516 <input type="text"/>



ex-CN For Your Railroad – S-13 Unnumbered

Road #	Item # (DC/Silent)	Item # (DC/DCC/Sound)
No #	36017 <input type="text"/>	36517 <input type="text"/>



MSRP

No Sound: \$309.95 CAD

No Sound: \$249.95 USD

w/SOUND: \$449.95 CAD

w/SOUND: \$359.95 USD

CONTACT YOUR RETAILER OR ORDER DIRECT AT RAPIDOTRAINS.COM & RAPIDOTRAINS.CA



CANADA: 500 ALDEN ROAD • UNIT 21 • MARKHAM • ONTARIO • L3R 5H5
USA: 382 HIGH STREET • BUFFALO • NEW YORK • 14204
Tel. 905.474.3314. Toll Free 1-855-LRC-6917. Fax. 905.474.3325.

RAPIDO



MLW S-13 AND RS-23 LOCOMOTIVES



Canadian Pacific — RS-23 Block Scheme

Road #	Item # (DC/Silent)	Item # (DC/DCC/Sound)
8020	36101 <input type="text"/>	36601 <input type="text"/>
8023	36102 <input type="text"/>	36602 <input type="text"/>
8028	36103 <input type="text"/>	36603 <input type="text"/>



Canadian Pacific — RS-23 Script Scheme

Road #	Item # (DC/Silent)	Item # (DC/DCC/Sound)
8025	36104 <input type="text"/>	36604 <input type="text"/>
8029	36105 <input type="text"/>	36605 <input type="text"/>
8041	36106 <input type="text"/>	36606 <input type="text"/>



CP Rail — RS-23 Action Red / 5" Stripes (A5M)

Road #	Item # (DC/Silent)	Item # (DC/DCC/Sound)
8017	36107 <input type="text"/>	36607 <input type="text"/>
8032	36108 <input type="text"/>	36608 <input type="text"/>
8044	36109 <input type="text"/>	36609 <input type="text"/>



CP Rail — RS-23 Action Red / 8" Stripes (A8M)

Road #	Item # (DC/Silent)	Item # (DC/DCC/Sound)
8018	36110 <input type="text"/>	36610 <input type="text"/>
8026	36111 <input type="text"/>	36611 <input type="text"/>
8030	36112 <input type="text"/>	36612 <input type="text"/>



CP Rail — RS-23 Action Red / 8" Stripes / No Multimark (A8NM)

Road #	Item # (DC/Silent)	Item # (DC/DCC/Sound)
8024	36113 <input type="text"/>	36613 <input type="text"/>
8035	36114 <input type="text"/>	36614 <input type="text"/>
8039	36115 <input type="text"/>	36615 <input type="text"/>



Minnesota Commercial — RS-23 Red Scheme w/Logo

Road #	Item # (DC/Silent)	Item # (DC/DCC/Sound)
80	36116 <input type="text"/>	36616 <input type="text"/>



Canada Atlantic Railway — RS-23 Red/White

Road #	Item # (DC/Silent)	Item # (DC/DCC/Sound)
8019	36117 <input type="text"/>	36617 <input type="text"/>
8023	36118 <input type="text"/>	36618 <input type="text"/>



DEVCO — RS-23 Green Scheme

Road #	Item # (DC/Silent)	Item # (DC/DCC/Sound)
200	36119 <input type="text"/>	36619 <input type="text"/>
201	36120 <input type="text"/>	36620 <input type="text"/>

MSRP

No Sound: \$309.95 CAD No Sound: \$249.95 USD
w/SOUND: \$449.95 CAD w/SOUND: \$359.95 USD

CONTACT YOUR RETAILER OR ORDER DIRECT AT RAPIDOTRAINS.COM & RAPIDOTRAINS.CA



CANADA: 500 ALDEN ROAD • UNIT 21 • MARKHAM • ONTARIO • L3R 5H5
USA: 382 HIGH STREET • BUFFALO • NEW YORK • 14204
Tel. 905.474.3314. Toll Free 1-855-LRC-6917. Fax. 905.474.3325.

RAPIDO



MLW S-13 AND RS-23 LOCOMOTIVES



PRELIMINARY ARTWORK AND DRAWINGS. SUBJECT TO CHANGES OR REVISIONS BEFORE PRODUCTION.



PRELIMINARY ARTWORK AND DRAWINGS. SUBJECT TO CHANGES OR REVISIONS BEFORE PRODUCTION.

Windsor & Hantsport – RS-23 ex-CP Patch

Road #	Item # (DC/Silent)	Item # (DC/DCC/Sound)
8036	36124 <input type="text"/>	36625 <input type="text"/>
8042	36124 <input type="text"/>	36625 <input type="text"/>

Industrial Yellow – RS-23 Unlettered

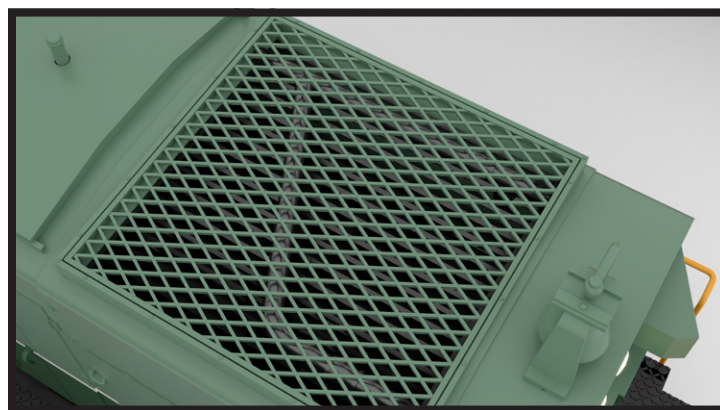
Road #	Item # (DC/Silent)	Item # (DC/DCC/Sound)
No #	36198 <input type="text"/>	36698 <input type="text"/>



PRELIMINARY ARTWORK AND DRAWINGS. SUBJECT TO CHANGES OR REVISIONS BEFORE PRODUCTION.

Industrial Red – RS-23 Unlettered

Road #	Item # (DC/Silent)	Item # (DC/DCC/Sound)
No #	36199 <input type="text"/>	36699 <input type="text"/>



MSRP

No Sound: \$309.95 CAD

w/SOUND: \$449.95 CAD

No Sound: \$249.95 USD

w/SOUND: \$359.95 USD

CONTACT YOUR RETAILER OR ORDER DIRECT AT RAPIDOTRAINS.COM & RAPIDOTRAINS.CA



CANADA: 500 ALDEN ROAD • UNIT 21 • MARKHAM • ONTARIO • L3R 5H5
USA: 382 HIGH STREET • BUFFALO • NEW YORK • 14204
Tel. 905.474.3314. Toll Free 1-855-LRC-6917. Fax. 905.474.3325.

RAPIDO