



SCD

SQUARE CONE DIFFUSER

Stock Notes

- Steel Construction
- 360 degree *fixed* air pattern
- Price B12 white powder coat finish
- Beaded neck

Available Accessories

- SPF mounting frame for surface mount applications
- VCR round damper
- 4th cone



Neck Size	Face Dim	Max CFM
6"	12" x 12"	235
6"	24" x 24"	250
8"	12" x 12"	350
8"	24" x 24"	400
10"	24" x 24"	550
12"	24" x 24"	780
14"	24" x 24"	960

Maximum CFM recommended for NC 30 or less.

SPD

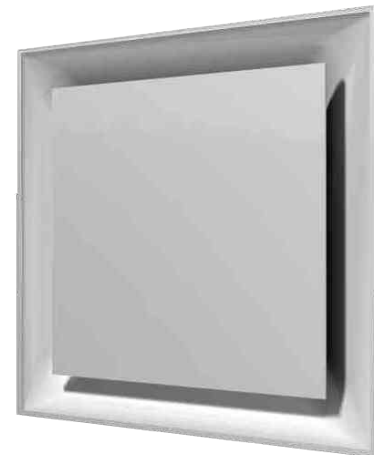
SQUARE PLAQUE DIFFUSER

Stock Notes

- Steel Construction
- 360 degree *fixed* air pattern
- Price B12 white powder coat finish
- Beaded neck

Available Accessories

- SPF mounting frame for surface mount applications
- VCR round damper



Neck Size	Face Dim	Max CFM
6"	24" x 24"	235
8"	24" x 24"	380
10"	24" x 24"	545
12"	24" x 24"	710

Maximum CFM recommended for NC 30 or less.

VCR 9

ROUND RADIAL INLET DAMPER

Stock Notes

- Damper mounts directly to any round diffuser next inlet that is sized nominal

Neck Size
6"
8"
10"
12"
10"



530

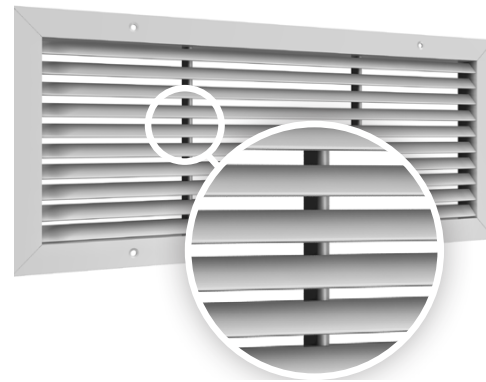
STEEL LOUVERED RETURN/EXHAUST GRILLE

Stock Notes

- Steel Construction
- 45 degree *fixed* blades with 3/4" spacing
- Countersunk screwholes & mounting screws
- Price B12 white powder coat finish

Available Accessories

- VCS opposed blade damper available for some sizes



Sizes Available with CFM Recommendations

		Width									
		6	8	10	12	14	16	18	20	22	24
Height	4	---	125**	155**	180	210**	---	---	---	---	---
	6	125	180**	235**	230	280**	312	360**	415**	---	490**
	8		235	275	360	410	480	545**	545	---	705
	10			360	420**	490**	545**	645**	700**	800**	960
	12				545	640	705	800	800	1225**	1000
	14					700	800**	960	800**	---	1040
	16						960	1000	1040	---	1225
	18								1225**	---	1390**
	20								1400	---	1555
	22									1550	1765**
24										1975	

Note: CFM listed is maximum recommended for NC 30 or less.

** Indicates size available with a 24 hour notice but would have minimal freight charge (ordered before noon to ship same day)

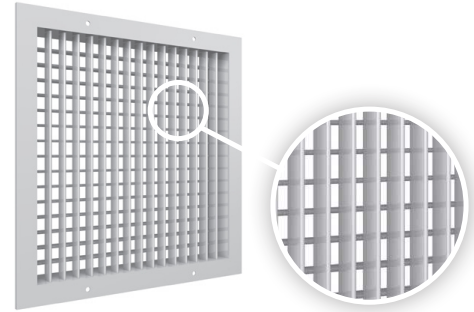
"---" Indicates size not available

520D

STEEL LOUVERED SUPPLY GRILLE

Stock Notes

- Steel Construction
- Adjustable double deflection louvers
- Countersunk screwholes & mounting screws
- VCS opposed blade damper attached
- Price B12 white powder coat finish



Sizes Available with CFM Recommendations

		Width									
		6	8	10	12	14	16	18	20	22	24
Height	4	---	180**	220	260**	300**	---	---	---	---	---
	6	180	260**	340	390	370	415	480	550**	---	855
	8		390	390**	480	550	650	720**	855	---	945
	10			480	550	650	720	855	945	1070**	1280
	12				720	855	945	1070	1100**	1280**	1440
	14					945	1070	1280**	1440**	---	1660**
	16						1280	1440**	1660**	---	1720**
	18							1660**	1720**	---	1950**
	20								1800**	---	2180**
	22									2180	---
24										2530**	

Note: CFM listed is maximum recommended for NC 30 or less.

** Indicates size available with a 24 hour notice but would have minimal freight charge (ordered before noon to ship same day)

"---" Indicates size not available

VCS 3

OPPOSED BLADE DAMPER

Stock Notes

- Steel Construction
- Designed to install in the neck of a square grille
- Provided with mounting clips

Neck Size
6" x 6"
8" x 8"
10" x 10"
12" x 12"
14" x 14"
22" x 10"
22" x 22"



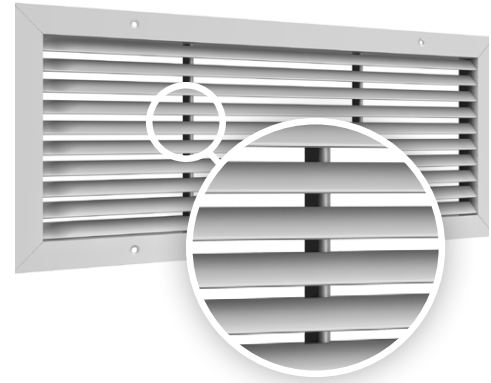
530 TB

STEEL LOUVERED RETURN GRILLE T-BAR

Stock Notes

- Steel Construction
- Intended to be installed in 24"x24" T-Bar Ceiling
- 45 degree fixed blades with 3/4" spacing
- Price B12 white powder coat finish

Face Dim
24" x 24"



Available Accessories

- VCS opposed blade damper available

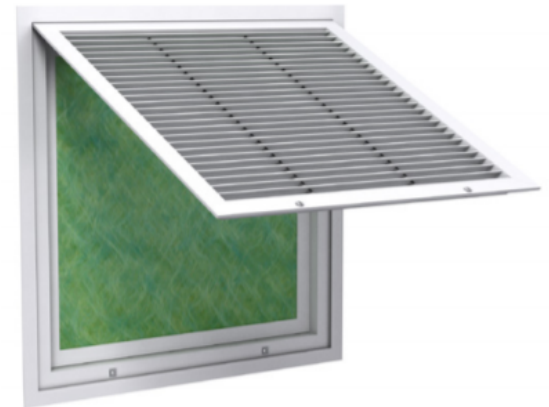
530FF TB

STEEL LOUVERED RETURN GRILLE T-BAR WITH FILTER

Stock Notes

- Steel Construction
- Intended to be installed in 24"x24" T-Bar Ceiling
- 45 degree fixed blades with 3/4" spacing
- Price B12 white powder coat finish

Face Dim
24" x 24"



Available Accessories

- 20"x20" AP111 Camfil filter

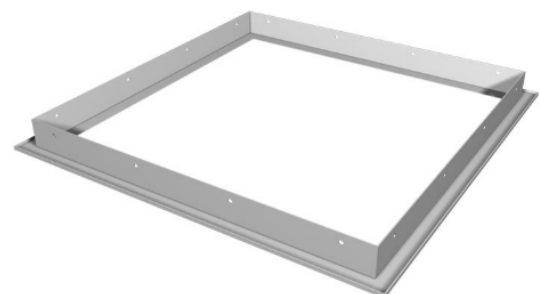
SPF

SURFACE MOUNT ADAPTOR FRAME

Stock Notes

- Surface mounting ceiling RGDs in drywall ceilings
- Steel Construction
- Price B12 white powder coat finish

Face Dim
12" x 12"
24" x 12"
24" x 24"
24" x 48"



80

EGG CRATE RETURN/EXHAUST GRILLE

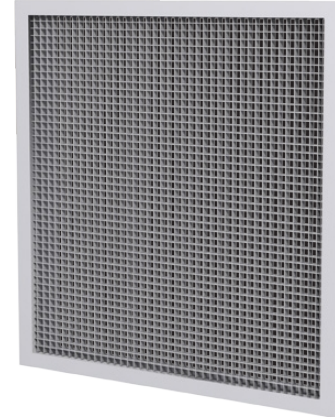
Stock Notes

- Steel border
- 1/2" x 1/2" x 1/2" aluminum core
- Countersunk screwholes & mounting screws
- Price B12 white powder coat finish

Available Accessories

- VCS opposed blade damper available

Duct Size
6" x 6"
8" x 8"
10" x 10"
12" x 12"
14" x 14"
22" x 10"
22" x 22"



80 TB

EGG CRATE RETURN/EXHAUST GRILLE T-BAR

Stock Notes

- Steel border
- Intended to be installed in 24"x24" T-Bar Ceiling
- 1/2" x 1/2" x 1/2" aluminum core
- Price B12 white powder coat finish

Available Accessories

- VCS opposed blade damper available for some sizes

Frame Size
24" x 12"
24" x 24"
24" x 48"



80FF TB

EGG CRATE RETURN GRILLE T-BAR WITH FILTER

Stock Notes

- Steel border
- Intended to be installed in 24"x24" T-Bar Ceiling
- 1/2" x 1/2" x 1/2" aluminum core
- Price B12 white powder coat finish

Available Accessories

- 20" x 20" AP111 Camfil filter (24" x 24" Frame)
- 20" x 20" & 20" x 24" AP111 Camfil filter (24" x 48" Frame)

Frame Size
24" x 24"
24" x 48"



RAC

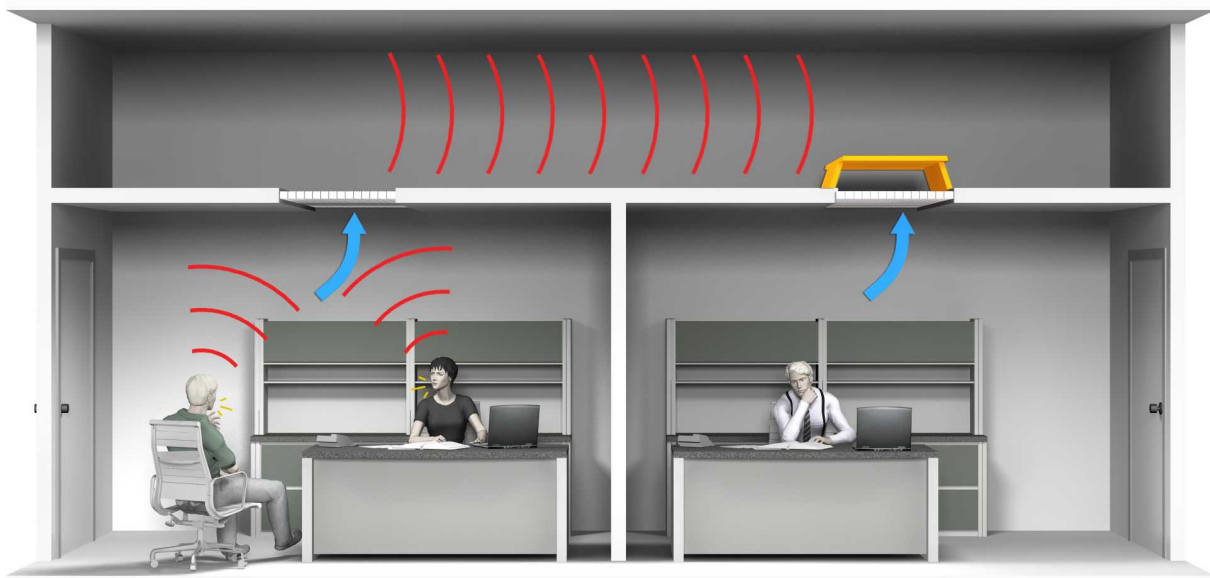
RETURN AIR CANOPY

Stock Notes

- Steel Construction
- Intended to be easily installed in T-Bar Ceiling grid above grille
- Economical acoustical solution for open return plenum
- Reduces visibility into the plenum & light transfer
- Price B12 white powder coat finish
- Class 1 Flame/Smoke < 25/50 rated
- Galvanized finish



Face Dim
12" x 24"
24" x 24"



Lightweight and easy to install, this innovative product provides an economical solution for return air noise and improved speech privacy. Positioned directly above return grilles, the RAC prevents the transfer of occupant noise into the plenum above and prevents mechanical noise in the plenum from flanking through return grilles, or open vents, into the occupied space below. The most common applications for acoustical ceiling tile return air plenums are in office and retail spaces.