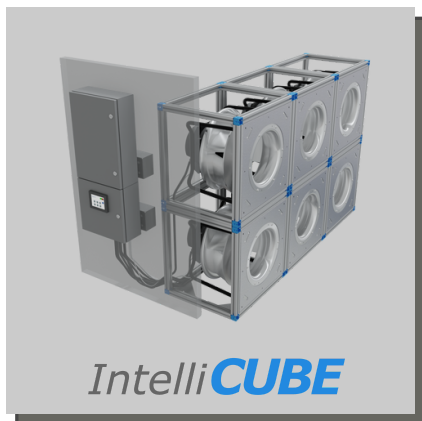




What is an *IntelliCUBE* Fan Array?



IntelliCUBE Fan Arrays are highly energy-efficient modular fan systems mounted in stackable cubes. With built-in N+1 redundancy, installing IntelliCUBE in your air handlers ensures uninterrupted airflow for critical applications. Ideal for retrofit applications, and when access is difficult, these EC fan systems are maintenance-free and highly energy-efficient, providing enough energy savings to pay for themselves in just a few years.



Max CFM:
100,000 +

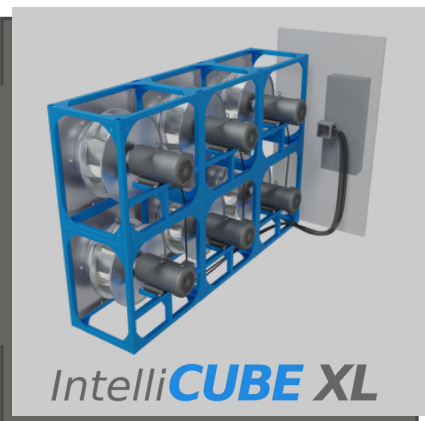
Max Static Pressure:
10"

Max Motor Size:
10 HP

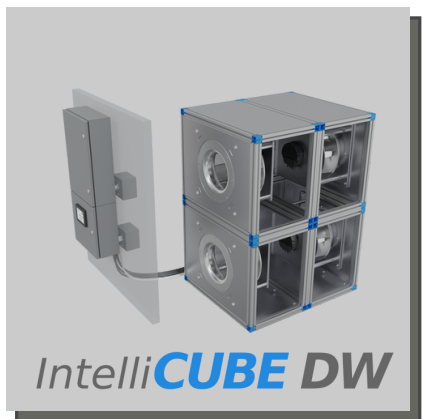
Max CFM:
300,000 +

Max Static Pressure:
14"

Max Motor Size:
20 HP



Fan Array Types



Max CFM:
40,000

Max Static Pressure:
12"

Max Motor Size:
15 HP

Max CFM:
100,000 +

Max Static Pressure:
8"

Max Motor Size:
7.5 HP



Reliability through N+1 Redundancy

Energy Efficient EC Motor Technology

Beltless, Zero-Maintenance Design

Minimal Noise and Vibration

Perfect for Retrofit Applications

Fast Lead Times

AC Motor



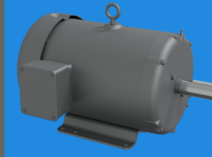
- Long-established technology
- Replaceable and serviceable components
- Abundant supply

EC Motor



- Highly efficient at part load
- No maintenance required
- No VFD required
- Require less space lengthwise
- Excellent power and torque density

PMEC Motor



- Excellent full range efficiency
- Smaller than traditional AC motors
- Replaceable and serviceable components
- Readily available Synchronous Reluctance technology

Options

- N+1 Redundancy
- Backdraft Dampers
- BACnet Integration
- Airflow Monitoring

Control Panel

Mainstream's fan array systems ship as a kit that include a state-of-the-art control panel with a local speed dial, analog (0-10v) input, and optional airflow monitoring and BACnet/Modbus integration.

CASE STUDY

University Hospital

University Hospital is an independent medical center with more than 500 licensed beds and over 3,000 employees. Located on a sixty-three acre campus in Newark, NJ, University Hospital is a regional resource for advanced care in a wide range of medical specialties.

EXISTING EQUIPMENT

A large belt-driven double width double inlet fan.

THE PROBLEM

The fan had required repairs six times in only four months and was nearing failure.

SOLUTION

A highly energy-efficient and maintenance-free IntelliCUBE fan array system was manufactured by Mainstream and delivered on time to meet the required expedited lead time. Binsky Mechanical was hired to replace the fan and retaining wall.

IntelliCUBE was a perfect match for University Hospital, not just because maintaining their old fan was becoming less feasible, but also because the hospital was investing in programs to increase airflow due to Covid-19 and reduce energy consumption. The IntelliCUBE system meets all of their needs, was easily installed, and as it is a fan array with built-in redundancy, in the unlikely event that a single fan fails, a critical situation can be avoided. A very important feature for a hospital.



Our IntelliCUBE fan array has been running perfectly for months. Installation was quick and easy, and noise and vibration are significantly reduced compared to our other equipment. The fans are maintenance free, which is a significant consideration in our plan to upgrade other air handlers with this system.

**- Facilities Manager
University Hospital**



Expedited Delivery



Redundancy



Maintenance Free



About Mainstream

Mainstream was founded in the early 90's as a family business in Northern New Jersey, manufacturing coils and other HVAC components. Over the past three decades, Mainstream has grown and evolved into one of the leading manufacturers of air handling systems and equipment. Continuous, iterative product development, paired with a steady expansion of production capability and a strong culture of service, has Mainstream positioned for robust growth throughout the next decade.

GET A QUOTE FAST

(908) 931-1010

www.mainstream-corp.com

info@Mainstream-Corp.com

47 Russo Pl, Berkeley Heights, NJ 07922



Watch Fan Array Installation