

Light is OSRAM

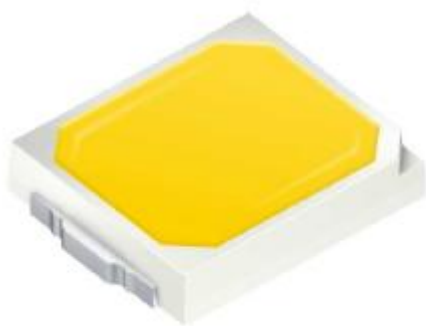
**OSRAM**  
Opto Semiconductors

# DURIS<sup>®</sup> E 2835 White (CCT 2700 K – 6500 K)

IES LM-80-08 Test Report

Test Documentation No.:

160642W1 (Document no.R2DG161117051-10) – 28<sup>th</sup> November 2016



# Appendix: Lumen Maintenance Projection (IES TM-21-11)

For Information Only!

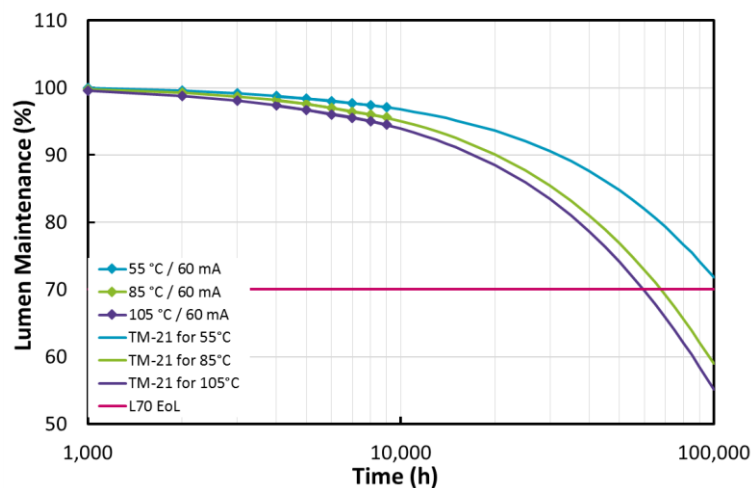
## 1. General Information

Description of LED light source tested	RF-W2HI32DS-DF-N-Y
Sample size per temperature	30
LED drive current used in the test	60 mA
Test duration	9,000 hours
Test duration used for projection	4,000 hours to 9,000 hours

## 2. Projection Data

	I	II	III
Case temperature (solder point)	$T_S = 55\text{ °C}$	$T_S = 85\text{ °C}$	$T_S = 105\text{ °C}$
$\alpha$	3.324E-06	5.294E-06	5.921E-06
B	1.000E+00	1.002E+00	0.996E+00
Reported L70	>54,000 hours	>54,000 hours	>54,000 hours

## 3. Graphic chart



Distribution of part or all of the contents of this Document to any 3rd party in any form without the prior permission of OSRAM Opto Semiconductors GmbH is prohibited except in accordance with applicable mandatory law.

## Appendix: Additional Models Covered By Testing

The 9 September 2011 ENERGY STAR® *Program Guidance Regarding LED Package, LED Array and LED Module Lumen Maintenance Performance Data Supporting Qualification of Lighting Products* defines conditions for which a LM-80 report may be applied to cover models that have not been directly tested.

The following list of models may be covered by the test results in this report:

- DURIS® E 2835 GW JTLMS1.EM with CCT 2700 K – 6500 K

END OF DOCUMENT

OSRAM Opto Semiconductors  
GmbH

Head Office:

Leibnizstrasse 4  
93055 Regensburg, Germany  
Phone +49 941 850-5  
Fax +49 941 850-1002  
[www.osram-os.com](http://www.osram-os.com)

**OSRAM**  
Opto Semiconductors