

# Solar street light

— Anchor series —



**Qualità**  
LIGHTING SOLUTIONS

# HIGH QUALITY

Professional Lighting



High Brightness  
LED



Built-in LiFePO4  
Battery



Outdoor  
Weatherproof



Durable Solar  
Panel



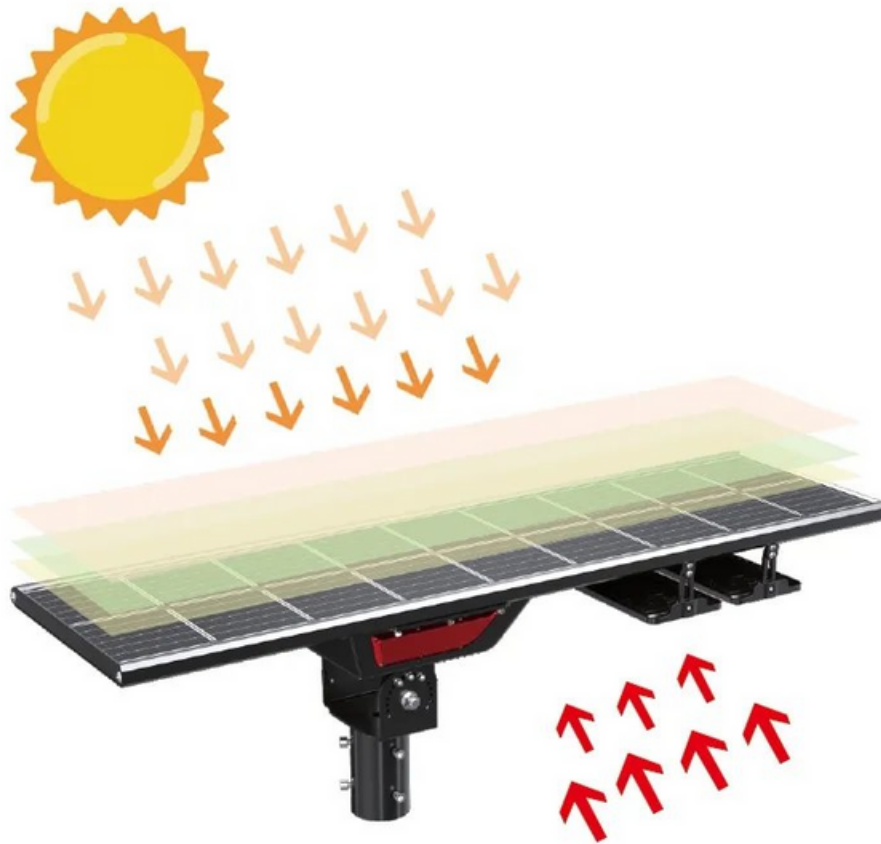
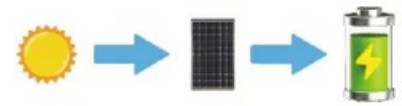
100% Warranty



Microwave  
Sensor

# Bifacial double glass solar panel

Bifaciality > 80%, +30% more energy yield



**Sturdy and Durable  
Monocrystalline Solar Panel**

## High brightness LED module

High brightness LED module  
Upto **190lm/w**

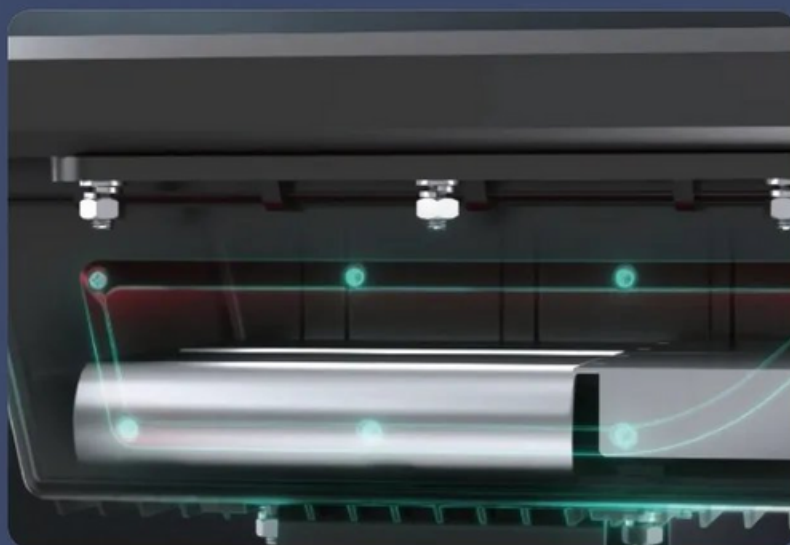


## Micro-wave sensor

With smart sensor and light control,  
more energy is saved to support  
**12 hours** of continuous work

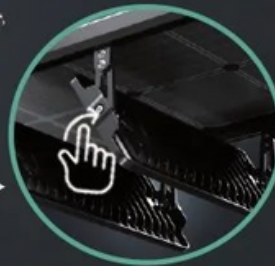
## LiFePO4 battery

Safe, reliable, and long lifetime





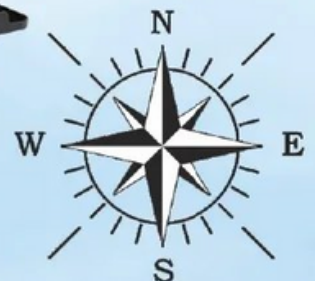
Solar panel and led module  
180° angle adjustable



## Energy maximization



- The street light must be tilted in direction facing the sun directly in order the PV module can generate maximum energy.
- And led modules can be rotated in direction toward road



## ★ 2 INSTALLATION METHODS



*Pole top installation*



*Side entry installation*

## Three Working Programs Adjustable



## THREE WORKING PROGRAMS

Working Mode 1		Working Mode 2		Working Mode 3	
Time for Period 1	2 Hours	Time for Period 1	2 Hours	Time for Period 1	2 Hours
Power for people be detected	100%	Power for people be detected	100%	Power for people be detected	100%
Power for no people be detected	40%	Power for no people be detected	40%	Power for no people be detected	40%
Time for Period 2	3 Hours	Time for Period 2	3 Hours	Time for Period 2	3 Hours
Power for people be detected	80%	Power for people be detected	70%	Power for people be detected	60%
Power for no people be detected	30%	Power for no people be detected	30%	Power for no people be detected	30%
Time for Period 3	6H	Time for Period 3	6H	Time for Period 3	6H
Power for people be detected	50%	Power for people be detected	40%	Power for people be detected	30%
Power for no people be detected	10%	Power for no people be detected	10%	Power for no people be detected	10%
Time for Period 4	2 Hours	Time for Period 4	2 Hours	Time for Period 4	2 Hours
Power for people be detected	50%	Power for people be detected	50%	Power for people be detected	50%
Power for no people be detected	30%	Power for no people be detected	30%	Power for no people be detected	30%
Time for Period 5	1 Hours	Time for Period 5	1 Hours	Time for Period 5	1 Hours
Power for people be detected	50%	Power for people be detected	50%	Power for people be detected	50%
Power for no people be detected	30%	Power for no people be detected	30%	Power for no people be detected	30%
Time for Period 6	1 Hours	Time for Period 6	1 Hours	Time for Period 6	1 Hours
Power for people be detected	50%	Power for people be detected	50%	Power for people be detected	50%
Power for no people be detected	30%	Power for no people be detected	30%	Power for no people be detected	30%
Time for morning	0	Time for morning	0	Time for morning	0
Power for morning	0	Power for morning	0	Power for morning	0
Power for no people be detected	0	Power for no people be detected	0	Power for no people be detected	0

**Working program changes automatically during summer and winter time**



**Summer**



**Winter**



## Technical specification

Model	Solar Panel	Battery	Battery Capacity	Wattage	Effi. (lm/w)	Lumen (lm )	CRI	IP	Size (mm )
ST030AE1M-PGS	Monocrystalline	LiFePO <sub>4</sub>	192WH	240W	190LM/W	5700LM	>70	IP65	619 *370 *235
ST040AE1M-PGS	Monocrystalline	LiFePO <sub>4</sub>	240WH	300W	190LM/W	7600LM	>70	IP65	811 *370 *235
ST060AE2M-PGS	Monocrystalline	LiFePO <sub>4</sub>	460WH	500W	190LM/W	11400LM	>70	IP65	1306 *370 *235
ST080AE2M-PGS	Monocrystalline	LiFePO <sub>4</sub>	537WH	600W	190LM/W	15200LM	>70	IP65	1556 *370 *235
ST100AE3M-PGS	Monocrystalline	LiFePO <sub>4</sub>	672WH	700W	190LM/W	19000LM	>70	IP65	1686 *370 *235
ST120AE3M-PGS	Monocrystalline	LiFePO <sub>4</sub>	672WH	900W	190LM/W	22800LM	>70	IP65	1686 *370 *235

## The general technical specification

Characteristics		Technical Specification			
Lighting Parameters	Light Distribution	Batwing Type II			
	CRI	>70 RA			
	Working Time	<table border="0"> <tr> <td>full power</td> <td>12hs</td> </tr> <tr> <td>saving mode</td> <td>Continuously 3 rainy days , 8 hours per night</td> </tr> </table>	full power	12hs	saving mode
full power	12hs				
saving mode	Continuously 3 rainy days , 8 hours per night				
Physical Parameters	Sensor Type	Microwave			
	Detection Distance	≤15m			
	Control Modes	Light control / Time control / Microwave control/ Time +Microwave control			
	Charging Time	6 hours sunshine directly			
	Discharging Time	6-8 hours			
	Material of Light	Die-casting Aluminum alloy			
	Chip Lifetime	≥ 50,000 hours			
Work Temperature	Charge Temperature	0°C ~ 60°C			
	Discharge Temperature	-20°C ~ 60°C			
Warranty	Solar Panel warranty	15 years			
	Battery warranty	3 years			

