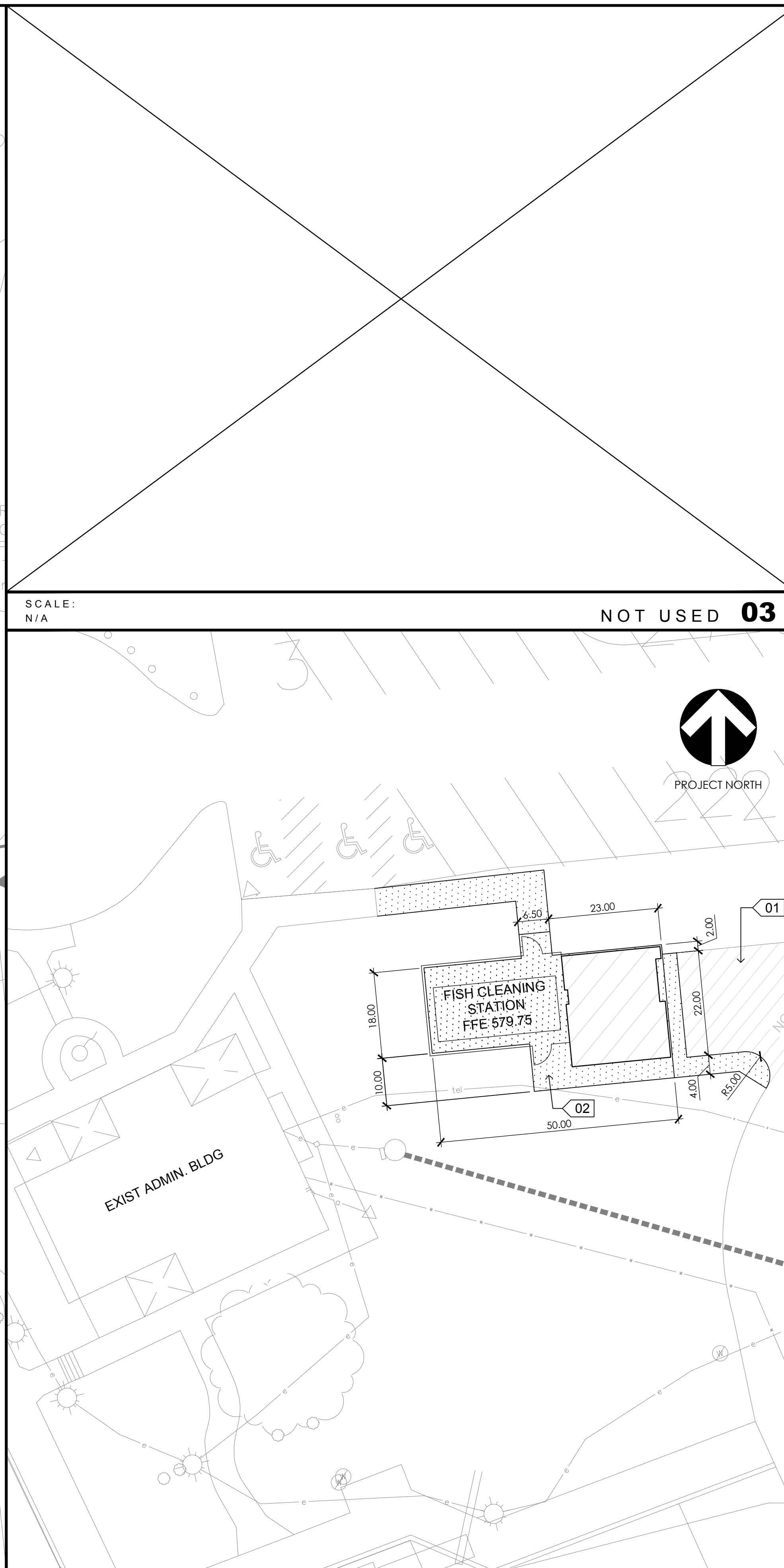


OVERALL SITE PLAN **02**



PAD LAYOUT PLAN **01**

ARCHITECTURAL KEY NOTES

- 01** PROVIDE NEW ASPHALT DRIVE: 2" WEARING COURSE ON 4" BINDER COURSE ON 8" TYPE 2A COMPACTED STONE BASE. PROVIDE PAINT STRIPPING AND "NO PARKING" SIGNAGE.
- 02** PROVIDE NEW CONCRETE WALK. REFER TO ARCH PLAN FOR MORE INFORMATION.

UTILITIES KEY NOTES

- W1** FROM EXISTING MECHANICAL ROOM, TAP EXISTING 2" WATER LINE AND EXTEND NEW 1-1/2" PVC WATERLINE TO NEW ROOM 104. NEW WATER LINE TO BE A MINIMUM OF 36" BELOW FINISH GRADE. CUT, BACKFILL AND PATCH EXISTING CONCRETE WALK, RE-SEED GRASS FOR ALL DISTURBED AREAS.
- S1** PROVIDE 4" PVC GRAVITY SANITARY LINE FROM NEW BUILDING TO EXISTING SANITARY MANHOLE.
- E1** PROVIDE NEW 50AMP CIRCUIT BREAKER FROM EXISTING PANEL TO NEW SUB-PANEL IN ROOM 102. PROVIDE ONE POPULATED 2" PVC CONDUIT AND ONE SPARE 2" PVC CONDUIT W/ PULL STRING.

VITETTA

ARCHITECTURE ENGINEERING PLANNING HISTORIC PRESERVATION
 645 NORTH 12TH STREET, SUITE 100
 LEMOYNE, PA 17043
 T 717.233.1105 F 717.754.0558

PENNSYLVANIA FISH & BOAT COMMISSION
 HARRISBURG, PENNSYLVANIA

PROJECT NO.

**WALNUT CREEK MARINA
 FISH CLEANING STATION**

241 MANCHESTER RD
 FAIRVIEW, PENNSYLVANIA 16415

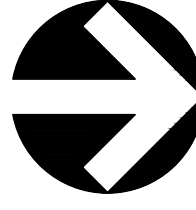
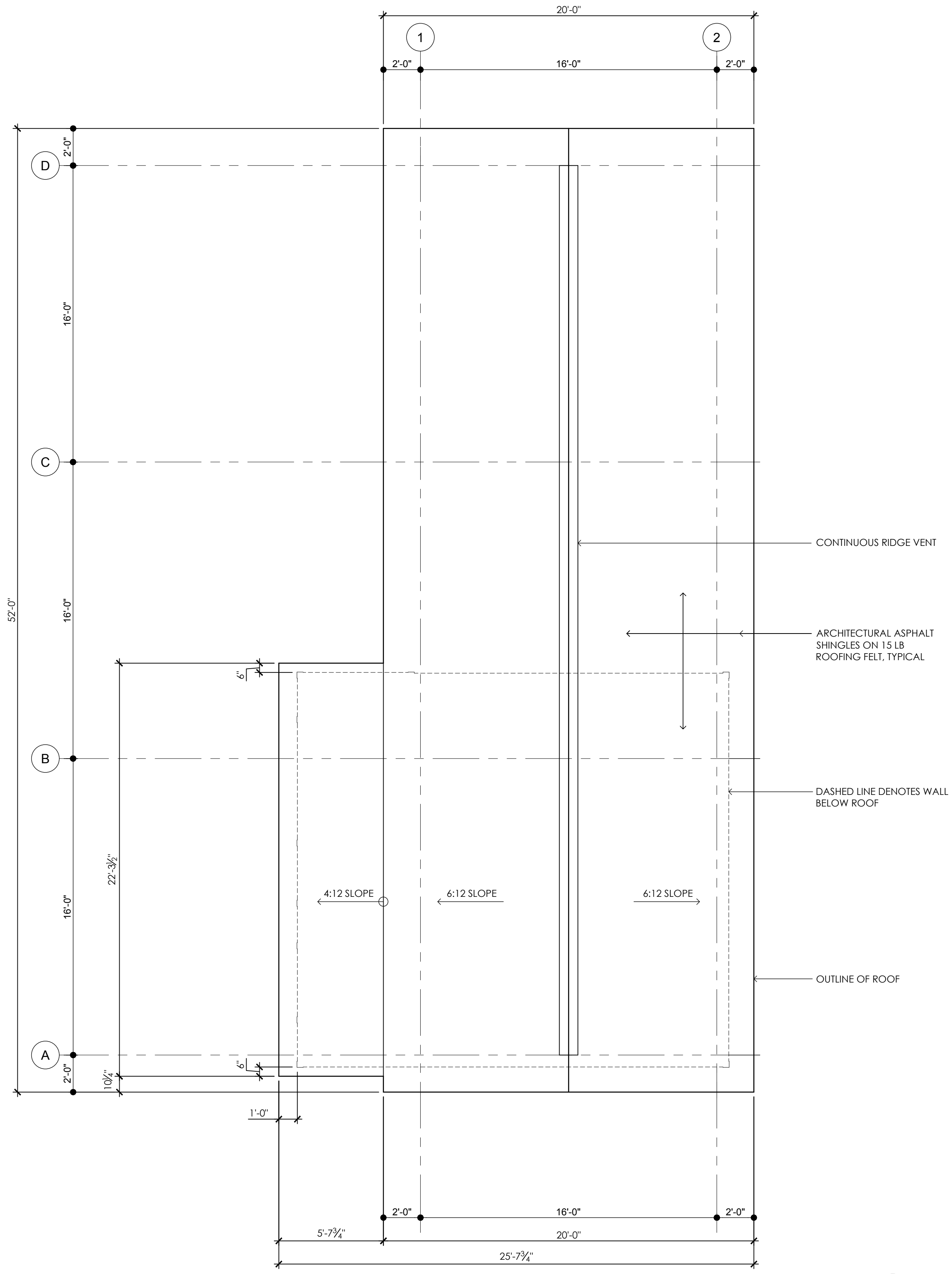
SITE & PAD PLAN

DRAWN BY: C. DARDIS	DATE: 01.06.2021
CHECKED BY: D. VODZAK	SCALE: NO SCALE

A-101

SCALE:
1" = 30'-0"

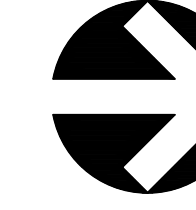
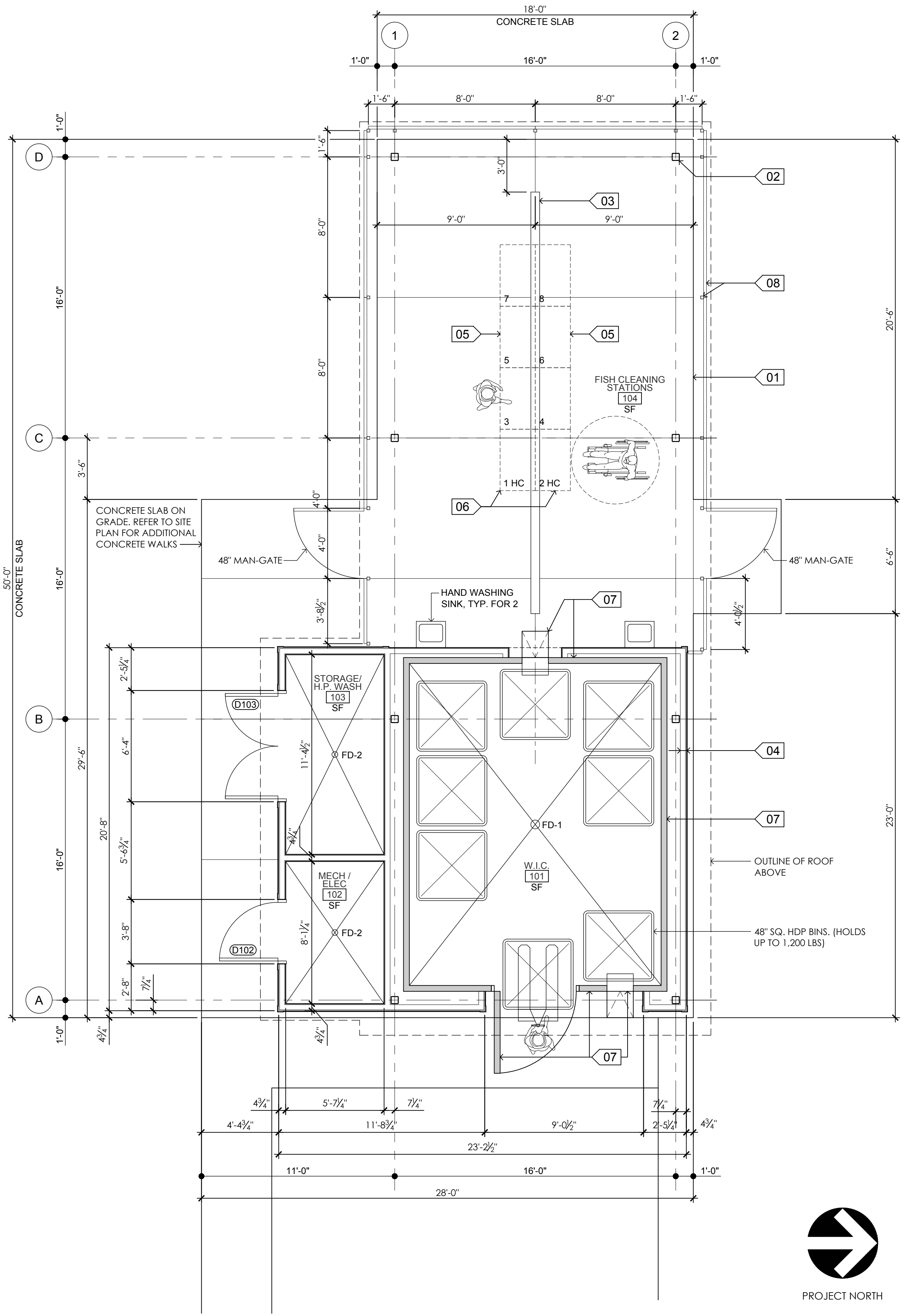
SCALE:
1/16" = 1'-0"



PROJECT NORTH

SCALE:
1/4" = 1'-0"

ROOF PLAN **02**



PROJECT NORTH

SCALE:
1/4" = 1'-0"

FLOOR PLAN **01**

- ARCHITECTURAL KEY NOTES**
- 01** 5000 PSI, 5" THICK CONCRETE SLAB ON 6 MIL VAPOR BARRIER ON 8" COMPACTED TYPE 2B STONE.
 - 02** 5" SQ. GALV. HHS STEEL TUBE COLUMN, PRIME AND PAINT ALL EXPOSED TO VIEW, TYPICAL.
 - 03** 24' LONG CAST-IN-SLAB TRENCH DRAIN W/ CLEAN OUT.
 - 04** PREFINISHED CEMENT BOARD SHINGLE SIDING ON 3/4" P.T. PLYWOOD ON 2 x 4 P.T. FRAMING, TYPICAL.
 - 05** 24" x 126" x 36" H. S.S. FISH CLEANING STATION WITH HDPE TOP, FIXED TO CONCRETE SLAB, TYPICAL FOR 2, (BACK TO BACK).
 - 06** 24" x 42" x 34" H. ANSI A117.1 COMPLIANT S.S. FISH CLEANING STATION WITH HDPE TOP, FIXED TO CONCRETE SLAB, TYPICAL FOR 2, (BACK TO BACK).
 - 07** 15" x 19" WALK-IN COOLER W/ 4'-8" MAN-DOOR ON NEW CONCRETE SLAB W/ FLOOR DRAIN. PROVIDE 18" x 18" HOPPER DOORS WHERE SHOWN ON PLANS AND ELEVATIONS
 - 08** PROVIDE PERIMETER 8' HIGH FENCE & POSTS AS DIMENSIONED WITH 42" MAN-DOORS WHERE SHOWN.

VITETTA

ARCHITECTURE ENGINEERING PLANNING HISTORIC PRESERVATION
645 NORTH 12TH STREET, SUITE 100
LEMOYNE, PA 17043
T 717.233.1105 F 717.754.0558

PENNSYLVANIA FISH & BOAT COMMISSION
HARRISBURG, PENNSYLVANIA

PROJECT NO.

**WALNUT CREEK MARINA
FISH CLEANING STATION**
241 MANCHESTER RD
FAIRVIEW, PENNSYLVANIA 16415

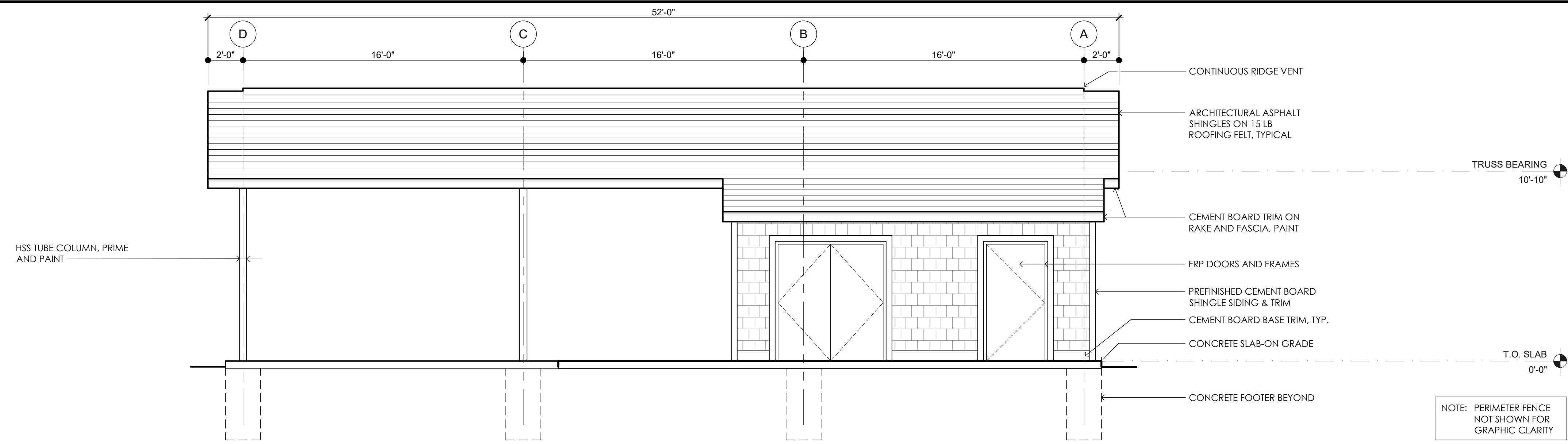
FLOOR & ROOF PLANS

DRAWN BY:	DATE:
C. DARDIS	01.06.2021
CHECKED BY:	SCALE:
D. VODZAK	NO SCALE

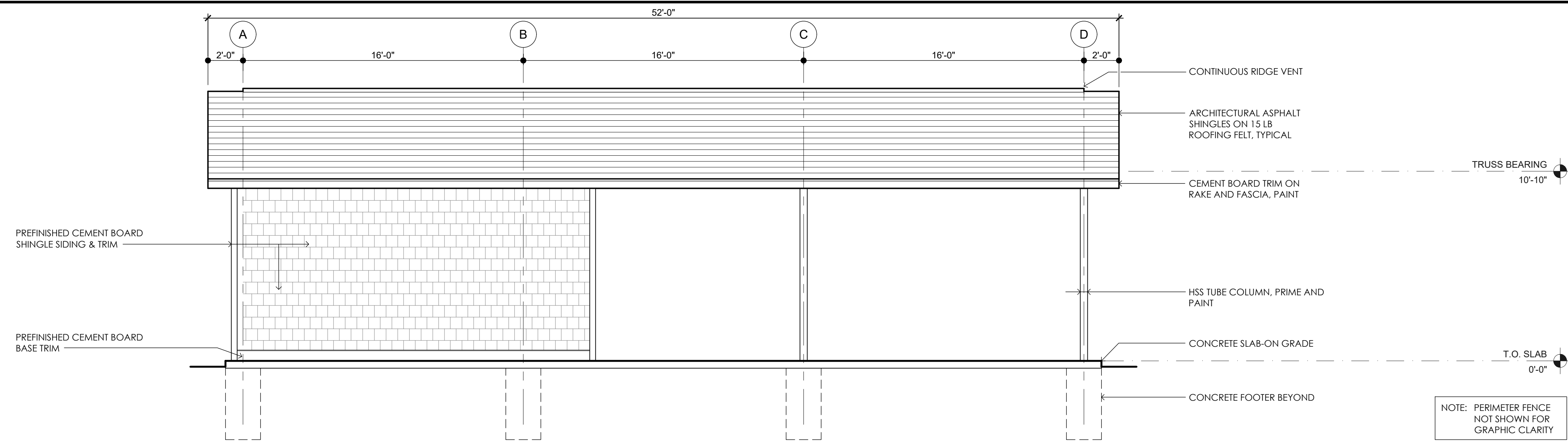
A-201

ARCHITECTURAL KEY NOTES

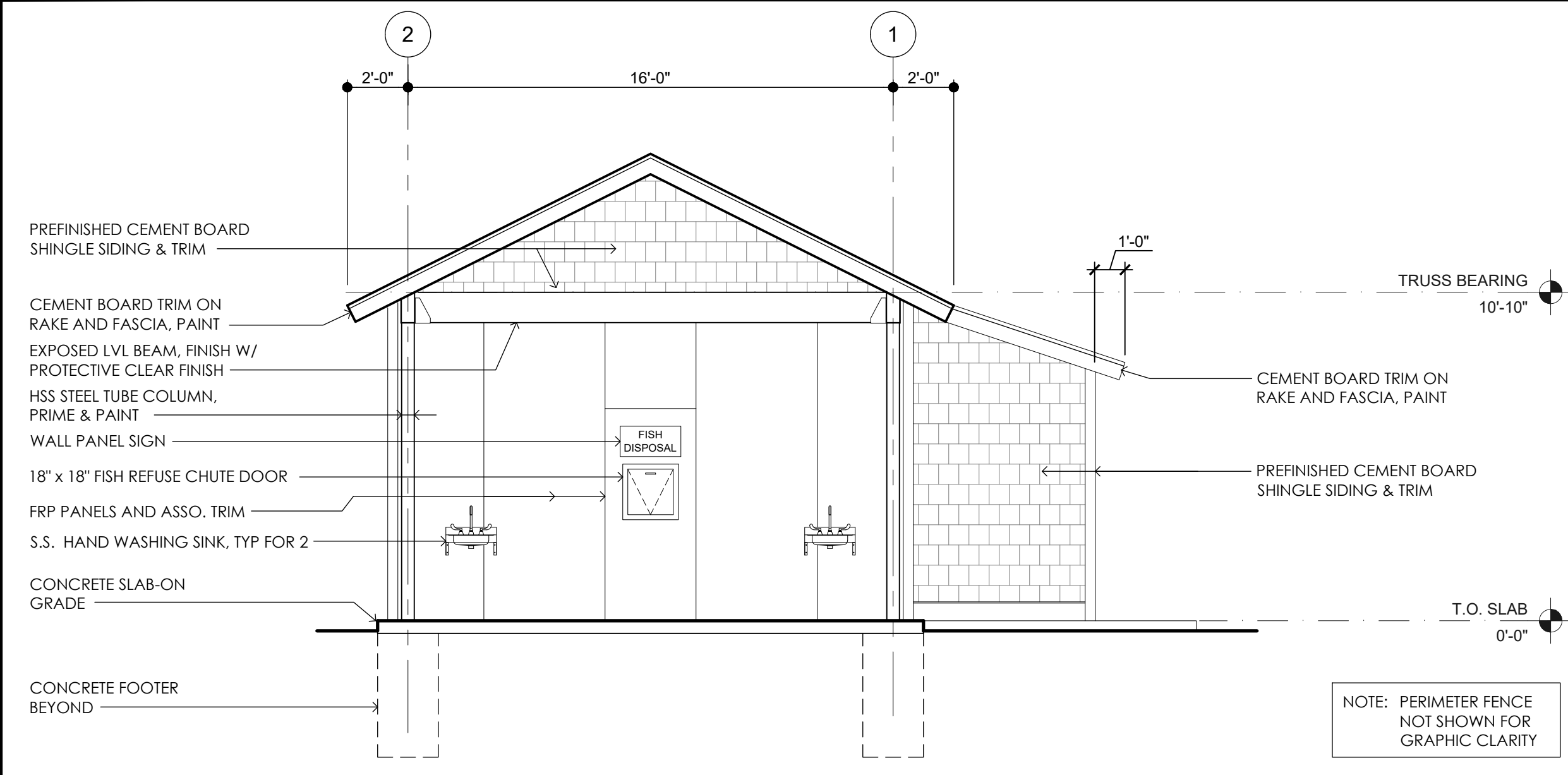
01 xxx



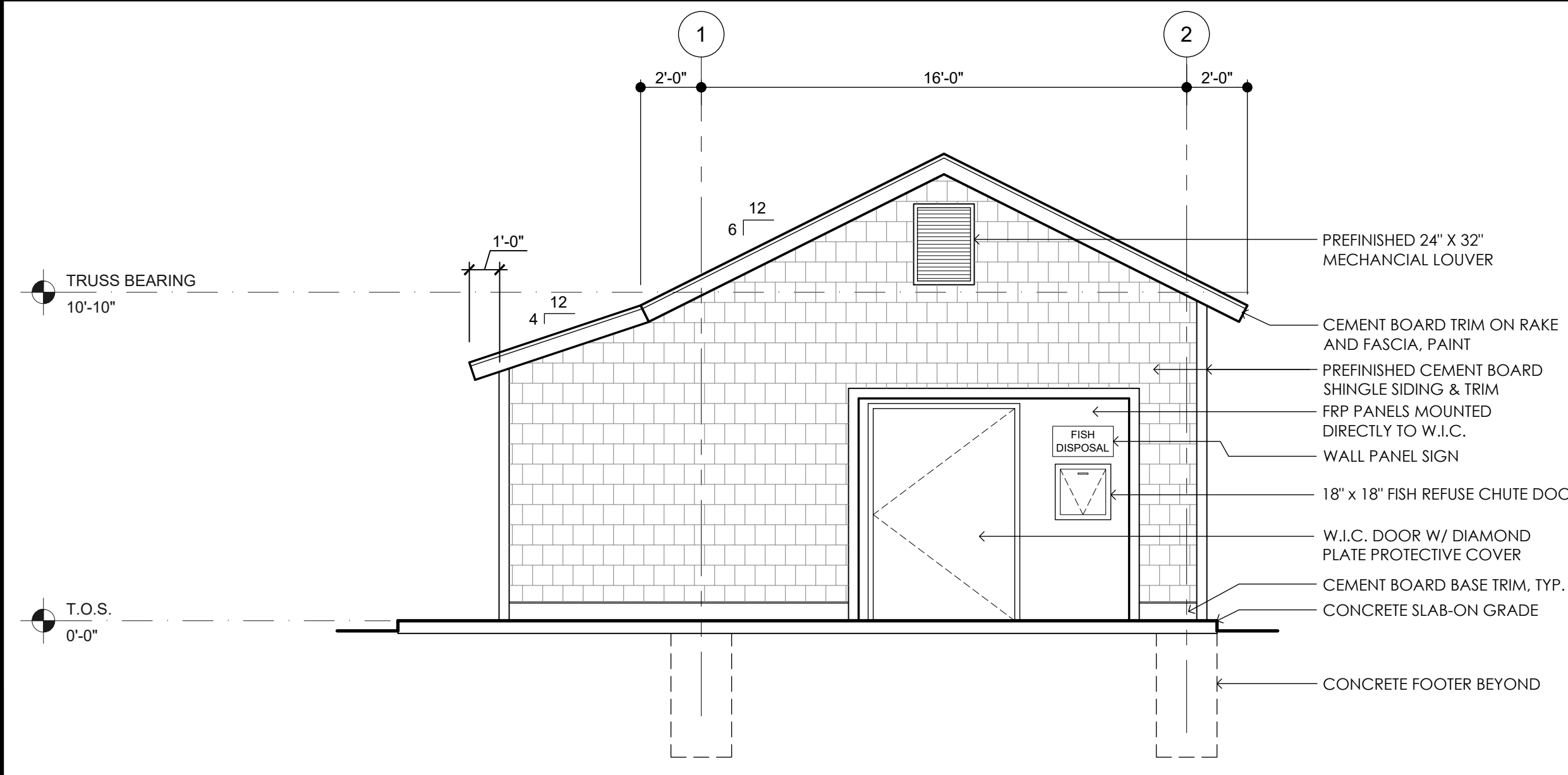
EAST ELEVATION 03



WEST ELEVATION 02



SOUTH ELEVATION 04



NORTH ELEVATION 01

VITETTA

ARCHITECTURE ENGINEERING PLANNING HISTORIC PRESERVATION
645 NORTH 12TH STREET, SUITE 100
LEMOYNE, PA 17043
T 717.233.1105 F 717.754.0558

PENNSYLVANIA FISH & BOAT COMMISSION
HARRISBURG, PENNSYLVANIA

PROJECT NO.

WALNUT CREEK MARINA
FISH CLEANING STATION
241 MANCHESTER RD
FAIRVIEW, PENNSYLVANIA 16415

EXTERIOR ELEVATIONS

DRAWN BY: C. DARDIS	DATE: 01.06.2021
CHECKED BY: D. VODZAK	SCALE: NO SCALE

A-301

SCALE:
1/4" = 1'-0"

SCALE:
1/4" = 1'-0"