



Contents

Project 01

*Glamping Dome
New trend of holiday understanding*

Project 02

*Wooden Dome
Accommodation in touch with nature*

Project 03

*FanusDome Glamping
A dome to rest and feel*

Project 04

*Fanus Dome
A dome where you will feel better*

Project 05

*Dome Lounge
We offer you comfort and quality*



About us

We have been producing dome structures since 2014 with our admiration for extraordinary architecture and our infrastructure and experience in geodetic structures.



Project 01

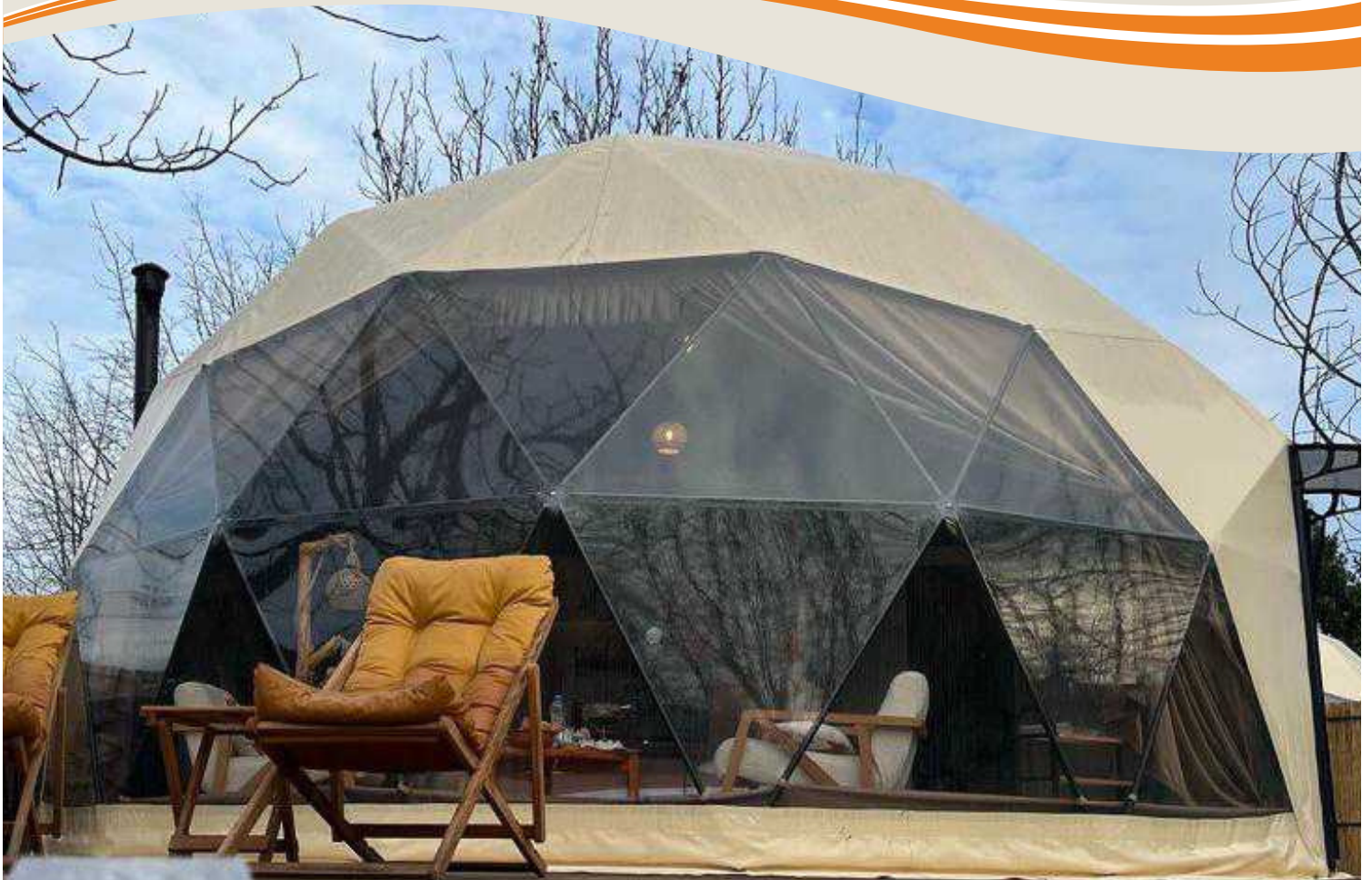
Jeodezik Dome

Glamping Dome

Why Choose Geodesic Dome?

Geodesic domes are superior to square buildings. The only person who gets proportionally stronger as their size increases constructed structures. They are also lighter, structurally They are more robust and require less material. They are extremely energy efficient. More efficient air circulation and their temperatures are equal throughout the structure. Geodesically This allows light to penetrate evenly throughout the day. It is economical. These structures are built without a foundation. Compared to other types of structures, it is the largest in terms of surface area.

It is the building architecture that offers the interior volume. It is also very easy to relocate the structure. Due to their 360 degree shape natural as window opening can be provided They have a high light-receiving capacity.





**DESIGNED
ACCORDING TO
YOUR TASTE**



**LARGE &
ERGONOMIC
INTERIOR
VOLUME**

Glamping Dome	20 m²	28 m²	35 m²	50 m²	75 m²
Diameter	5 mt	6 mt	7 mt	8 mt	9 mt
Height	3 mt	3.5 mt	4 mt	4.5 mt	5 mt
Sitting Area	18 m²	26 m²	33 m²	48 m²	74 m²
Weight	360 kg	485 kg	620 kg	775 kg	895 kg
Reccommended maximum capacity	2 Adults	2 Adults 2 Children	2 Adults 3 Children	Family/ Group	Family/ Group



Dome Glamping

With its fully customizable design, you can find your dream accommodation space. With the Dome designed according to your taste, you can enjoy your time without maintenance for many years.



Geodesic Specifications

Steel Frame Material: 25 mm 2 mm wall thickness steel pipe profile

Steel Paint: Electrostatic oven powder paint after dip galvanization

Wind Speed Resistance: 108 km/h (30 m/s)

Snow load Strength: 76.5 kg/m² (0.75 kn/m²)

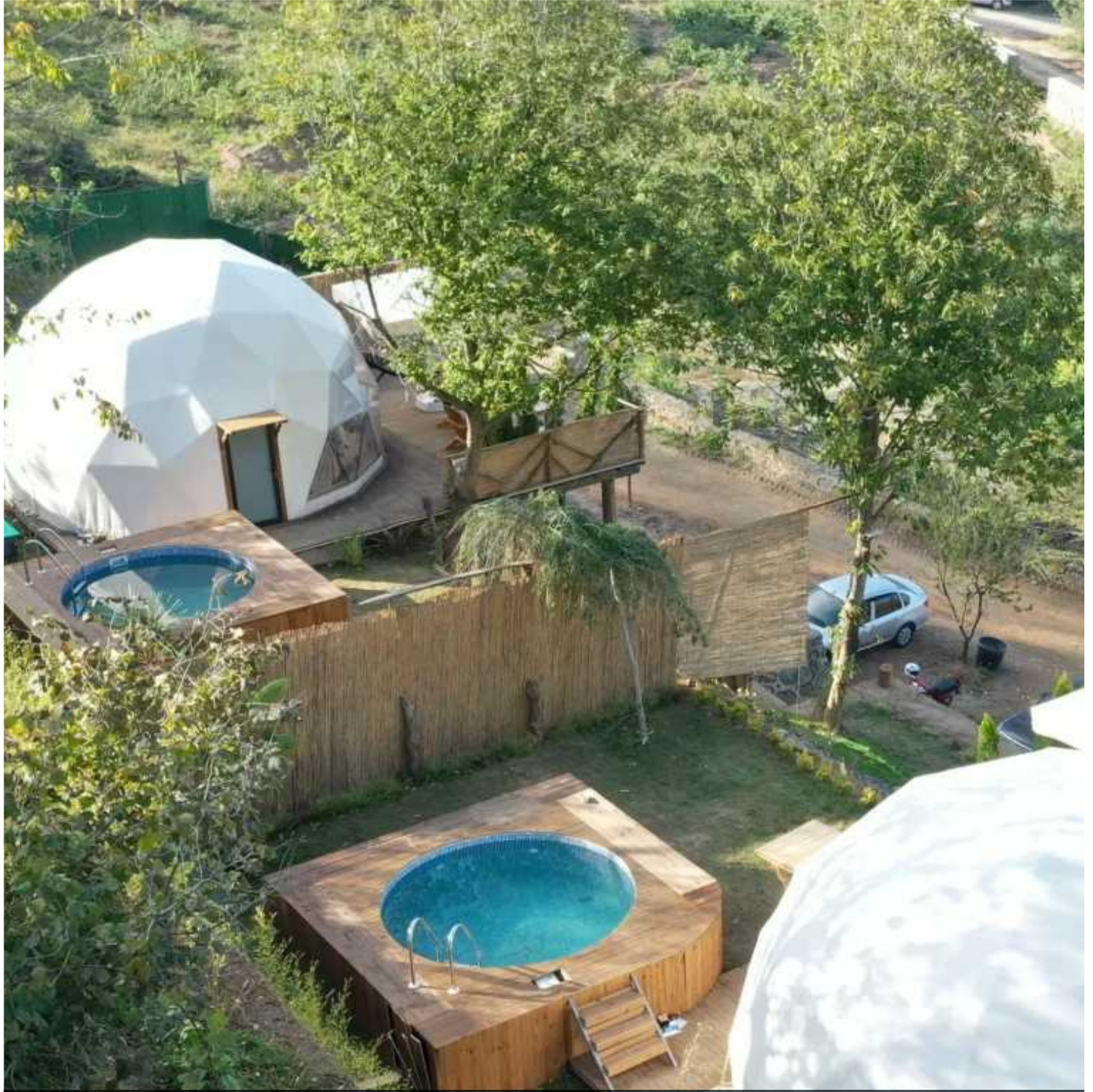
Coating Canvas: Membrane blockout 850 gr/m² flameproof imported Serge Ferrari, mehler or It is imported from Belgium Sioen companies.

Insulation: Bizofol insulation material ABA double-sided aluminum coated air block material It is used for sound and heat insulation.

Interior fabric and curtain: Anti-allergic fabric can be removed and washed. Color options are available. Canvas Properties: It has material strength up to -30/+70 degrees and 80% light transmission.

Door: It is in an iron case with tempered aluminum glass, a castle lock and 90x200 dimensions.





Other Amenities:

Over door canopy for entrance

Canvas mosquito net

heat resistant chimney outlet device



Project 02

Wooden Dome





Project 03

FanusDome
Glamping

Why Choose FanusDome Glamping?

FANUS DOME GLAMPING is built from opaque white solid material. Its front part is not detached from the environment. It is made of transparent material to provide viewing angle.

It is 300 times more durable than glass. It is a crystal clear dome that blends in perfectly with the surroundings. Transparent hexagonal solid polycarbonate material is a 2 mm imported product with a 10-year warranty.

Solid Polycarbonate has a honeycomb structure to which it is attached with 4 mm stainless screws. Transparent hexagonal plates are unbreakable and waterproof. They are resistant to sunlight. Bizofol insulation material ABA double-sided aluminum Coated air block material provides sound and heat insulation. Interior decor Anti-allergic fabric and curtain can be washed. Door is made of aluminum material.

Manufactured sotina is frosted white glass, it can be locked from inside and outside.

It can be installed in just one day. You can use a stove, fireplace, air conditioner inside.





**DESIGNED
ACCORDING TO
YOUR TASTE**



**LARGE &
ERGONOMIC
INTERIOR
VOLUME**

Project 04

FanusDome



It is completely transparent, UV protected, frameless. As a permanent structure strong enough to be used, but can be disassembled during assembly or it is easy enough to carry. In terms of weather resistance it is an excellent product.

3.6 m dia. 10 m² / 4 mt. dia. 12.5 m² / 5 mt. dia. 20 m² / 6 m. dia. 28 m² 7 mt diameter 35 m² can be made as desired diameter/m²

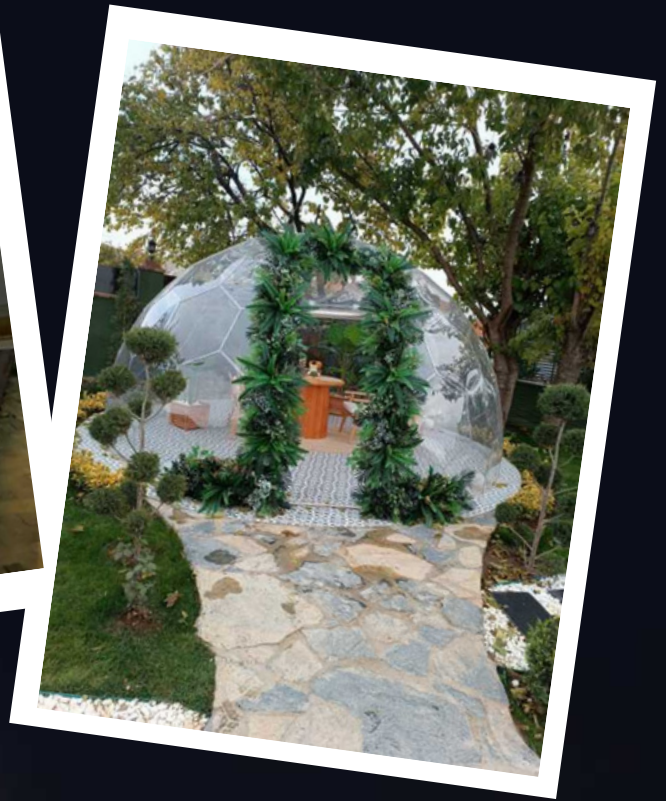
Transparent hexagonal plates are unbreakable and waterproof. It is resistant to sunlight. Our product can be used in 4 seasons.

Easy to install, effortless to clean, can be used anytime anywhere. 360 degree transparent, from the environment Provides unobstructed viewing angle



*Also optionally: The number of windows can be increased, Lockable door with 4*4 laminated glass in a steel frame (static powder-coated frame) 700 degree durable chimney outlet apparatus for stove, canopy octopus awning fabric can be made*





Project 05

■ Dome Lounge

Our product, which you can use in the garden of your home or in your beach business, impresses with its visual quality.





Ahşap Dome

We offer you aesthetics, comfort and quality in this product, which is produced with wood or steel.

