

noniva

Dome Glamping

www.noniva.com.tr





About Noniva

Geodesic Dome

Globe Dome

Globe Tunnel Dome

Globe Dome Glamping

Ndome Glamping



INDEX

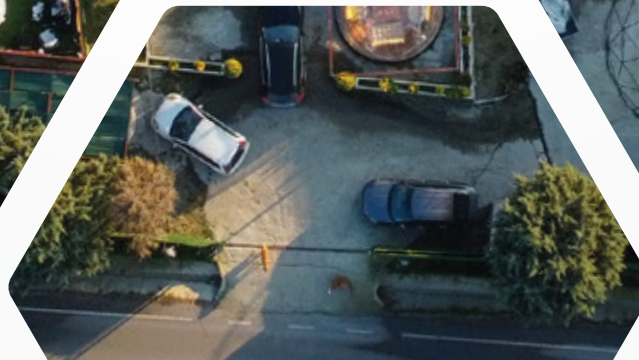
About Noniva

Since 2014, we have been specializing in the production of dome structures with our passion for extraordinary architecture and our expertise in geodesic structures. We meticulously apply dome architecture and techniques in our geodesic structures. Our professional team and solution-oriented approach ensure that we are always there for everyone in need of dome structures. We take pride in being a leading and exemplary company in Turkey for dome structures, thanks to our extensive experience with glamping facilities and our production of next-generation glamping domes. We proudly share our extensive knowledge with all our customers.

At the intersection of nature's warm embrace and modern comfort, we offer superior quality and aesthetically designed accommodation solutions with our 7,500 m2 production facility.

Noniva Dome Glamping places great importance on sustainability and eco-friendly practices. Noniva Dome Glamping minimizes environmental impact by using eco-friendly materials in its production processes. Providing a nature-integrated, comfortable, and aesthetic accommodation experience is one of our main goals. Combining high-quality materials with modern design is one of the core values of the company. Noniva Dome Glamping is the leader in the glamping industry as a result.

Noniva Dome Glamping has established a strong position in the industry with its unique designs that make the glamping experience special and its commitment to environmental sensitivity. The company, which prioritizes customer satisfaction, continues to create unforgettable moments for nature-loving accommodation enthusiasts. The company's product range includes glamping domes of various sizes and features. Noniva Dome Glamping offers a variety of options tailored to the needs of its customers.





Turkey's first dome tent manufacturer

G

GEODESIC DOME

Due to its geometric properties, it has a high resistance to natural disasters such as earthquakes and hurricanes. Additionally, it uses less material compared to other structures and is quite lightweight. Economical. By using less material compared to a conventional structure, it offers economic advantages. These structures are built without a foundation. As a result, their installation and assembly can be done quickly, which is another advantage. Compared to other types of structures, it's the architectural design that offers the largest interior volume relative to its surface area. Since there is no need for supporting elements like columns, the space remains unobstructed and provides a spacious interior. Moving the structure to a different location is also quite easy. Not only can it be disassembled and reassembled, but due to its lightweight nature, it can also be moved as a whole.

Due to their 360-degree shape, they can have windows in every direction, resulting in high natural light intake. Additionally, due to their high heat distribution, there is no need to use a lot of energy to heat the interior.

Geodesic product diameters: 5m diameter 20 m2 / 6m diameter 20m2 / 7m diameter 36 m2 / 8m diameter 49m2 / 9m diameter 64 m2 / 10m diameter 79m2.

Product specifications and technical details:

Steel frame : Ø25mm steel tube
Steel color : After dip galvanizing, electrostatic powder coating.
Wind resistance : 108km/s (30 m/s)
Snow load resistance : 76.5 kg/m2 (0.75 kn/m2)
Covering : Membran blackout 850 gr/m2 It's a flame-resistant material of Doğusan quality.
Covering features : The material has a resistance up to -30/+70 degrees and 80% light transmittance.
Insulation : Bizofol insulation material, ABBA double-sided aluminum-coated air block material, is used for sound and thermal insulation.
Interior fabric and curtains: The hypoallergenic fabric can be removed and washed. Color options are available.
Door : Aluminum is used within a steel frame in dimensions of 90x200. Additionally, it's tempered glass and uses a Kale lock.
Optional : Insect screen, a chimney outlet adapter resistant up to 700 degrees for a stove, and a canopy for the door entrance can be provided.

Depending on the materials used for connecting the steel, various screw and clip fastening methods can be employed. The simplest method used is pressing the steel ends. This method allows all curves to be connected using just one screw at each connection point.

Interior insulation material for geodesic structures: Thanks to the insulation material used, significant thermal insulation is achieved in the top coverings made with membranes. Bizofol material, known as aluminum-coated (air-filled nylon), provides effective insulation in harsh winter and intense summer conditions. It's applied between the insulation and the membrane.

GEODESIC DOME



GEODESIC DOM



Turkey's first dome
tent manufacturer



**Transparent with
a 360-degree wide view,
integrating seamlessly
with the environment.**

Completely transparent, UV-protected, and frameless. It's strong enough to be used as a permanent structure, yet easy to disassemble or relocate. It's an excellent product in terms of weather resistance.

Turkey's first dome tent manufacturer



GLOBE DOME



*Turkey's first dome
tent manufacturer*

GLOBE TUNNEL

GLOBE DOME & GLOBE TUNNEL DOME

It's 300 times more durable than glass.

It's a crystal-clear dome that blends perfectly with the environment. Imported, transparent, pentagonal and hexagonal solid polycarbonate materials are used in thicknesses of 2mm, 3mm, or 4mm, depending on the dome dimensions. It comes with a 10-year color retention guarantee.

Solid polycarbonate panels aren't an unfamiliar material to us, as they are used in various applications today, including in cell phones, helmets, baby incubators, and more.

Solid polycarbonate has a honeycomb structure and is fastened with 4mm stainless steel screws.

Transparent, pentagonal, and hexagonal panels are shatterproof and waterproof. It's resistant to sunlight.

Our product is suitable for use in all four seasons. Our product features 2 windows and 1 zippered door. The PVC thickness is 0.60mm. All metal parts are statically powder-coated, screws are galvanized, and the fabric is antiallergic and washable.

Product features and technical specifications:

It's shatterproof.

Thanks to UV protection, the color does not fade.

Thanks to the PVDF coating, it's self-cleaning.

It doesn't allow harmful UV rays to pass through.

It can be easily removed and reinstalled.

Globe dome product diameters:

3.6m diameter 10m2 / 4m diameter 12.5m2 / 5m diameter 20 m2 / 6m diameter 28 m2 / 7m diameter 35m2

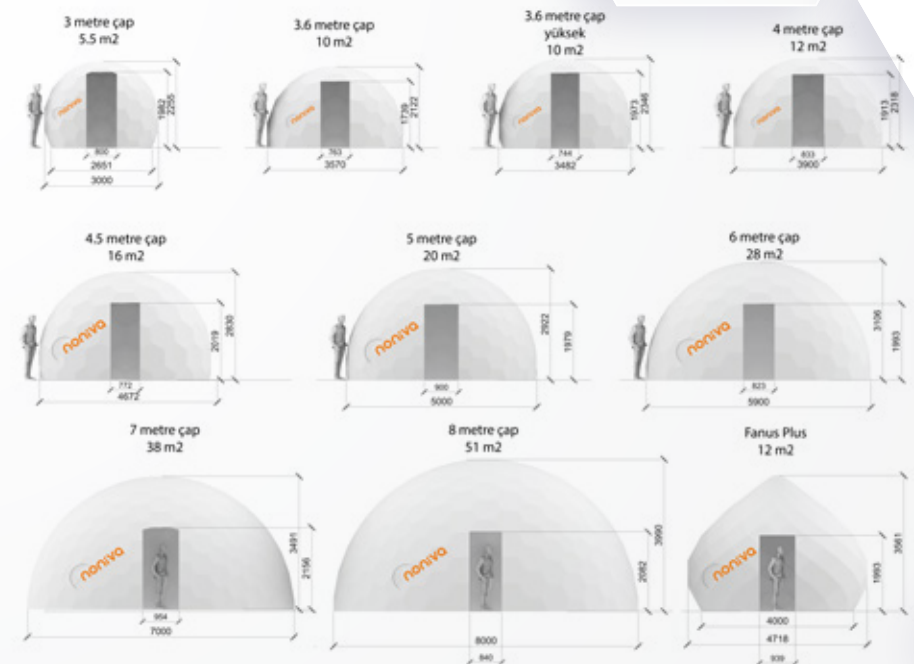
Additionally, the number of windows can be increased upon request. Within an aluminum frame, a solid polycarbonate glass door with a lock is made. A chimney outlet adapter resistant up to 700 degrees for a stove can be made. A canopy made of octopus tent fabric can be provided.

Globe Dome formation: Pre-assembled pentagonal and hexagonal polycarbonate panels come with a set of high-quality stainless steel screws, connectors, a high-quality door frame, and floor mounting brackets. You can store the panels and reassemble them in the future.

For maintenance: Requires minimal maintenance.

To keep it in good condition: You can ensure it stays clean by washing the inside and outside with water and wiping it with a microfiber cloth.

Can be used in various applications. Restaurant, cafe, weddings (with attention to social distancing), Winter garden, veranda, play area for children, pool, jacuzzi, garden gym, yoga studio, outdoor photo studio.



DOME



**Half-transparent
with a wide field of view
without detaching from
the surroundings**

Turkey's first dome tent manufacturer

GLOBE



GLOBE DOME GLAMPING

It's 300 times more durable than glass. It's a crystal-clear dome that integrates perfectly with the surroundings. It's a crystal-clear dome that blends perfectly with the environment. Imported, transparent, pentagonal and hexagonal solid polycarbonate materials are used in thicknesses of 2mm, 3mm, or 4mm, depending on the dome dimensions. It comes with a 10-year color retention guarantee.

Solid polycarbonate has a honeycomb structure and is fastened with 4mm stainless steel screws. Transparent, pentagonal, and hexagonal panels are shatterproof and waterproof. It's resistant to sunlight.

Bizofol insulation material, ABBA double-sided aluminum-coated air block material, is used for sound and thermal insulation.

The antiallergic fabric can be removed and washed.

The door is made from aluminum material with transparent solid glass.

Depending on the model, it can be assembled in just one day.

It can accommodate a stove, fireplace, and air conditioning.

It's shatterproof.:

Thanks to UV protection, the color doesn't fade.

Thanks to the PVDF coating, it's self-cleaning.

It doesn't allow harmful UV rays to pass through.

It can be easily removed and reinstalled.

Product diameters:

5m diameter 20m² / 6m diameter 28m² / 7m diameter 36m²

8m diameter 49m² / 9m diameter 64m² / 10m diameter 79m².

DOMES GLAMPING



Our product, which you
can use either in your
garden or at your beach
business, stands out with
its visual quality.

NDOME LOUNGE





Fabrika & Showroom
Factory & Showroom

Nakkaş Mah. Ören Bayırı Cad. 4/2 Çatalca / İstanbul
Tel: 02124892929 Gsm&Whatsapp : 05334721275 Mail: info@noniva.com.tr

www.noniva.com.tr

