



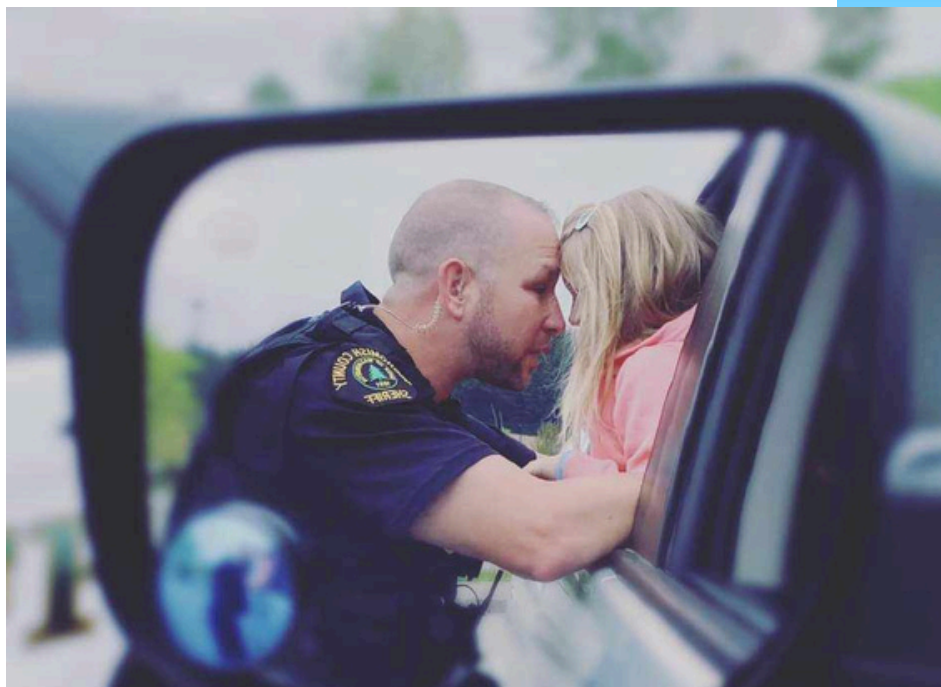
MEMBERS HELPING MEMBERS



SUPPORTING THOSE WHO SERVE

EIN: 86-2742673

501(C) 3



→ INTRODUCTION

OUR FOUNDER



My life has shown me that influential figures can appear when least expected, leaving a lasting impact. Whether it be a coach, teacher, or family member, for me, it's law enforcement. As a recovering addict, I owe my 11 years of sobriety to the tough love of law enforcement and the criminal justice system. Their unwavering support set me on the path to recovery. What started as a small "Back the Blue" group in my hometown quickly grew into a countywide movement. I realized the need to stand up for law enforcement and became the voice of support for those who felt unappreciated. This led to the creation of "Back the Blue - Snohomish County," an initiative to rally communities and show law enforcement they are valued and essential.

"You are wanted, needed, and appreciated. I am here to support you."

Kelly Landon

OUR WORK SPEAKS FOR ITSELF



Appreciate Each Officer

7500 snack bags delivered around the county to make sure every officer felt appreciated



Car Seats

A need was found, requested, and filled in a timely manner by the generous donations of the community



Honor a Hero

Memorial Coins were designed and provided to all members of the Everett Police Department. Wristbands were made for all officers in Snohomish County



HERO Award

HERO Award was created for a way that the public can honor a law enforcement officer for impacting their life.

THERE IS MORE



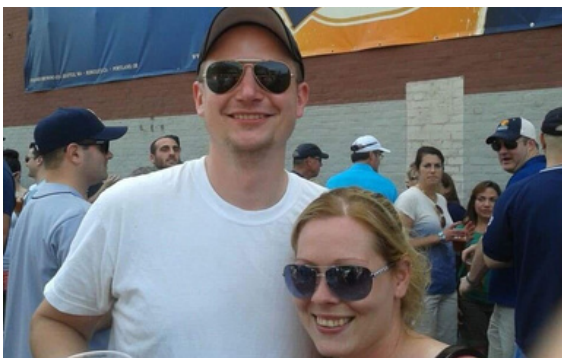
Tribute Show Car

Our 2005 Chevrolet Corvette sponsored by Wicked Wraps honors our fallen heroes with each name listed



LE Motivational Speaker

Motivation speaker for law enforcement and their families sharing my store of redemption, and how I wouldn't be here with out them.



Assisting when needed

When Dan was shot we stepped in to raise funds for the family, and was able to pay for the funeral expense



House Fire

Stepped in to assist a deputy family during a house fire. Help with getting essentials, and paying for unexpected expenses

WHATS NEXT



Mobile Law Enforcement Memorial

Remembering and paying tribute to the courageous individuals who have dedicated their lives and paid the ultimate sacrifice to serving and safeguarding our communities



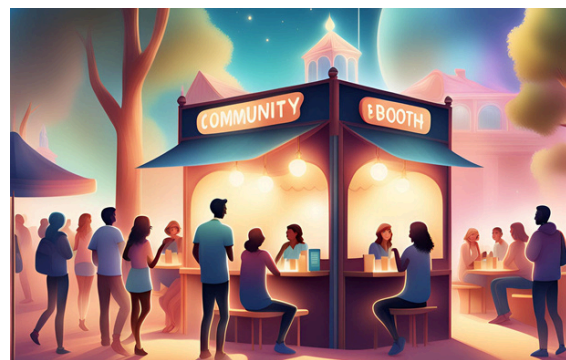
Rapid Response Team

We are in the process of establishing a dedicated team to provide immediate support to our officers during times of crisis. This support may encompass morale-boosting assistance, provision of meals, or any other essential aid required to ensure that our officers feel valued and supported.



Mental Health Support & Resources

Empowering first responders with a mental health resource book customized to their unique needs. In addition to various other tools, they can be utilized in the moment when required.



Community Connection/Events

Promoting positive interactions between law enforcement officers and community members to build trust and mutual respect.

MOBILE MEMORIAL



Join us as we honor and pay tribute to the brave individuals who have selflessly dedicated their lives and made the ultimate sacrifice to protect and serve our communities. This includes officers who have tragically lost their lives, both on and off duty.

Each fallen officer will be respectfully commemorated with a display featuring their photo, department, and personal story.

We are proud to partner with the honor guard in Snohomish County to organize a special ceremony. All donations received will directly support honor guard members with uniforms and travel expenses for National Police Week in Washington, DC. This is our chance to show our gratitude and support for those who have given so much.

RAPID RESPONSE TEAM



We are assembling a specialized team to deliver immediate support to our officers during critical moments. This assistance can include morale-boosting initiatives, providing meals, or any other crucial aid necessary to ensure our officers feel valued and backed.

We have been tasked with supplying meals at the hospital for injured officers, providing meals for officers during extended court cases, and more. Additionally, we raise funds for officers experiencing tragic events such as injuries or house fires, and we send memorial items for fallen officers.

Furthermore, we will be training a team of responders to rapidly assist law enforcement when called upon.

MENTAL HEALTH SUPPORT



We are dedicated to providing essential mental health support for first responders in our community. We understand the challenges law enforcement officers face in seeking help, and we are committed to offering them personalized mental health resources that can be accessed when needed. By working with nonprofits and professionals, we are creating tailored tools to address their specific needs and support them in their vital roles.

COMMUNITY CONNECTION



Promoting positive interactions between law enforcement officers and community members is an integral part of our commitment to building trust and mutual respect. This involves actively engaging in community events, such as neighborhood gatherings, local festivals, and town hall meetings, to foster meaningful connections and open lines of communication. Additionally, our HERO officer award program provides an opportunity for community members to nominate officers who have gone above and beyond in positively impacting their lives. This recognition not only highlights the exemplary efforts of law enforcement personnel but also strengthens the bond between the police force and the community they serve.

WHAT OUR CLIENTS SAY



We really appreciate everything that Kelly and the team at Back the Blue do for us and others in Law Enforcement in Snohomish County. Kelly and the team have been there with uplifting messages, snack packs for officers, and other great support. When things have been challenging we appreciate the positive support that Back the Blue channels for our Police and Custody Officers!

Chief Erik Scairpon - Marysville Police Department



Back the Blue - Snohomish County is a wonderful nonprofit. Kelly Landon is so supportive of the Law Enforcement Community. When others were condemning police officers, Kelly stepped up to help them. She has been bringing snacks and water to different police stations and dispatchers across Snohomish County. She is giving back to those who protect and serve us. Thank you, Kelly for all that you do.

Pat Ford - Supporter



Kelly has stepped up at a time when it's needed most! She is doing a phenomenal job supporting the Blue! We are there to support her efforts anyway we can, Keep up the Awesome work Kelly!

David Lux - Supporter



Kelly not only shows incredible support by her moral boosting donations to departments, she reaches out and supports LEOs in a deeper, more personal way. Kelly provided a donation for my wife and I to attend a family function and she has supported fallen LEOs and their families.

Jessie Picard - Law Enforcement Officer



Kelly and her team have been a breath of fresh air at different times and for different reasons. Her story is inspiring and her passion is thick.

Thank you for thinking of local Law Enforcement and providing all kinds of thoughtful gifts and encouragement.

John Coffee - Law Enforcement Officer

→ CONCLUSION AND NEXT STEPS

WHERE YOU COME IN

Current Projects:

Mobile Memorial: Budget \$6000

Mental Health Resource Guide: \$3000

Rapid Response Fund: \$3000

Monthly Goals:

Donations: \$1500

Show your commitment to our cause by actively supporting us. Take charge by organizing a local event to raise awareness about our nonprofit. Utilize your social networks to amplify our message and inspire others to join us. Your regular monthly donation would provide crucial ongoing support to help us achieve our objectives.

STAY IN TOUCH WITH US!



 **Website**

www.backthebluesnohomishcounty.org

 **Phone**

425-772-9552

 **E-mail**

kelly@theunionconnection.org

 **Social Media**

www.facebook.com/backthebluesnohomishcounty

 **HQ address**

Marysville, WA