



World Class Cable Handling Equipment

Hy-Haul Equipment is Australian Designed & Manufactured in Sale, Victoria

Hy-Haul: Sales Office
25 Canterbury Rd Braeside, VIC 3195
Contact: Rob Whitelaw
M: 0418 538 155
E: rob@hy-haul.com.au

P: 03 9553 8155
www.hy-haul.com.au

Hydeng: Manufacturing, Service & Parts
14 Dawson St Sale, VIC 3850
Contact: Shane Bartlett
M: 0409 441 769 P: 03 5144 1769
E: shane@hydeng.com.au

History

- Hy-Haul have designed, manufactured and supplied world class leading equipment in Australia & New Zealand for over 25 years. All machines as far as we know are still in use today.
- Hy-Haul is the world class leader for safety innovations including operator comfort reducing fatigue with our ergonomic cabin and revolutionary walkways.
- Hy-Haul specialises in Overhead & Underground Hauling, Cable Pushing & Cable Payout.
- Hy-Haul is constantly evolving our designs to ensure maximum safety and Quality installation, resulting in best practices.
- Hy-Haul only use the highest quality hydraulic and electronic components ensuring ongoing reliability, resulting in long term quality installations with minimal risk of cable damage.

HW101 Single Drum ABC

- Compact overhead winder
- Up to 11kN pull on full drum. Proportional and settable maximum
- Up to 2000mts 16mm poly storage
- Precise proportional control for Haul-in or Payout
- Automatic rope layering
- Up to 50mts/min line speed
- Silent Pack Diesel
- Data Logger
- Trailer mounting



HW107 Mini Haul Unit

- Up to 11kN pull O/H mode
- Up to 40 mts/min line speed
- Electronic tension control
- Capacity up to 450mts of 16mm poly
- Proportional Drum Control
- Interchangeable Drums
- Fits into a 7 x 5 trailer



HW116 Cable Pusher

- Up to 20kN thrust
- Up to 20 mts/min line speed
- Max 180 Ø Cable standard
- Proportional Crush Control
- Vertical & horizontal mounting options standard
- Thrust, Speed, Crush, Direction & open/close all operated wirelessly
- Diesel or Electric power unit
- Optional wireless Sys-Link for start/stop & speed control



HW201 Underground Capstan Machine

- Up to 60kN line Pull
- Up to 40 mts/min
- Full proportional control
- Intelligent Auto take-up drum
- Powered Auto Fold Walkways/Guards
- Auto/manual Layer Control
- Data Logging



HW303 Triple Overhead

- Purpose built for recovery and installation
- Up to 20 kN line Pull regardless of drum diameter
- Up to 50 mts/min Capped Max line speed from 30% drum \varnothing to full
- Full proportional control
- Powered Auto Fold Walkways/Guards
- Auto/manual Layer Control
- Data Logging
- Interchangeable drums. Split type/rope type



HW530 Pig Trailer

- 15 Ton Payload
- Pintle Hook or Bartlett Ball
- Landing Leg
- Platform and steps curbside
- Full ADR compliance
- Cam locks to suit Hy-Haul Chassis'



HW630 Triple Drum Stand

- 3 x 1500 \varnothing or 1 x 2000 \varnothing drums up to 1300 wide
- Each drum full proportional braking via smart wireless remote 5kN standard or 10kN option
- Full freewheel
- Optional 2kN clutched rewind
- Gas lift walkways/guards
- Optional wireless Sys-Link from winder for start/stop & tension.



HW820 Insulator Washer

- 2 ton galvanized skeletal trailer
- 1000 lt plastic water tank
- Triple cylinder water pump supplying 95 lpm @ 50 bar of pressure
- Stainless steel hose reels fitted with 30 mts each of $\frac{3}{4}$ " single nonconductive hose and manual rewind lever.
- 2 FMC "Bean" Spray Guns



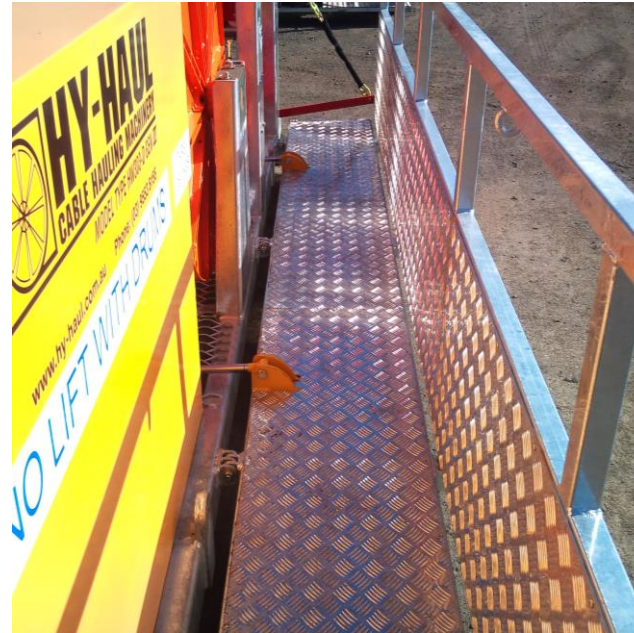
HW950 Under Drum Auto Stand

- Drum mass up to 10 Ton
- Can accommodate a wide variety of Drums inc. damaged wooden units
- Automatically payout and stop when Cable is required. Threshold can be adjusted remotely
- Threshold setting automatically adjusts as diameter reduces
- Manual wireless control of Start/Stop, Direction and Auto Force
- Diesel hydraulic powered



Hy-Haul offers superior operator safety & comfort

- Folding Walkways down both machine sides.
- On the 201 & 303, these are powered by Electric actuators and controlled remotely allowing the operator to stand clear and watch. On the 630 the are manual Gas Lift assist.
- Interlocks means walkways must be raised into the guard position before operations.



Hy-Haul offers superior operator safety & comfort

- Ergonomic Cabin including fully adjustable suspension seating
- Wrap around console with tinted Clear View poly-carb windows
- Sound proofing ensuring clear radio comms
- Fingertip joystick controls.
- 7" Colour control monitor. Critical data and setting options, live update line load graphs, alarms, etc.
- Rooftop refrigerate Air-Con cooling
- Water & and Windproof



Hy-Haul offers world class design & quality

- Bunded Fuel & Hydraulic Reservoirs with electronic level & temperature transmitters.
- Hydraulic & Electronics from the leading world manufacturers.
- Superior Hydraulic, Electronic & Mechanical design.
- Best Software design available, all done in-house and configurable to suit any customer needs.
- Australian designed, manufactured & programmed in Sale, Victoria.

