

# Border Planting Design

---

**Designed for:** Jane

**Address:** Dorchester

Designed by

**Julian Malleson**

[gardenerdorchester.co.uk](http://gardenerdorchester.co.uk)

05/03/2025

# Project Overview

---

## **Aims of the design:**

- To create a new flower border on this barren patch that used to be a lawn
- To include some plants already present in other areas connect visually with the rest of the garden
- To create a low-maintenance, reliable planting scheme
- To be pollinator and wildlife friendly

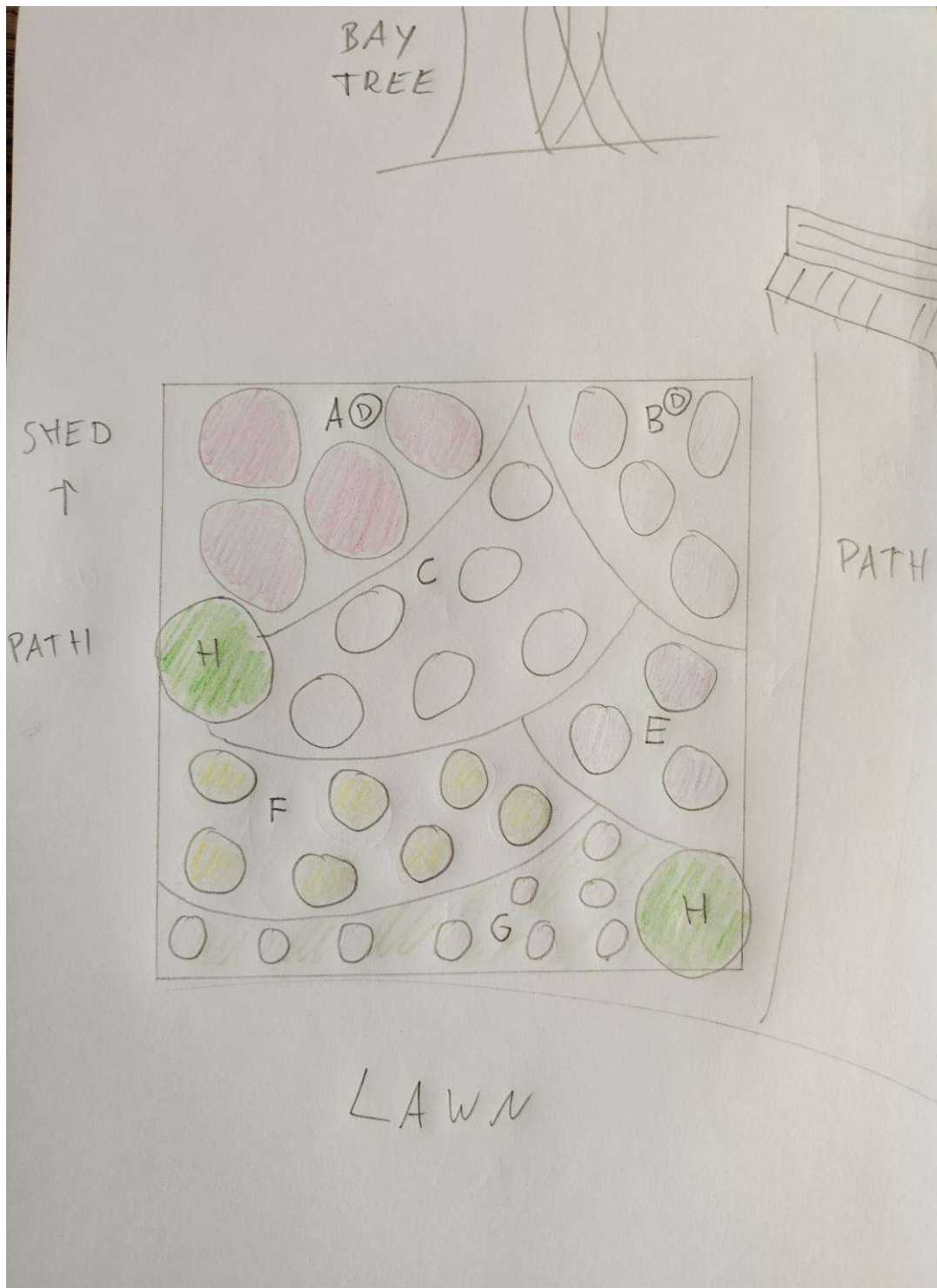
**Border location:** A roughly square patch towards the east of the garden, near/under a large bay tree.

**Border size:** 2.2 m × 2.1 m (approx. 4.6 m<sup>2</sup>)

**Aspect:** West-facing, almost complete shade due to the bay tree and other shrubs until about 2 in the afternoon, then strong sun until late

**Soil:** Good quality topsoil, area previously lawn

# Planting Layout



*Planting layout showing approximate positioning. Final spacing to be adjusted during planting.*

## Plant List & Quantities

Ref	Plant	Quantity
A	Japanese Anemone 'September Charm'	4
B	Astrantia 'Pink Bride'	4
C	Astilbe White	6
D	Foxglove 'Pam's choice'	2
E	Heuchera 'Midnight Rose'	3
F	Alchemilla mollis	7
G	Epimedium 'Crimson Beauty'	9
H	Hackonechloa macra	2
I	Daffodils – same as in garden	In autumn – Phase 2
J	Anemone blanda white	In autumn – Phase 2

*Quantities allow for relatively close planting to achieve a full look quickly and help suppress weeds.  
Final spacing can be adjusted during planting if needed.*

## Seasonal Interest

- **February – March:** Daffodils, Anemone blanda, Epimedium
- **April - May:** Heuchera, Epimedium, Alchemilla
- **June–July:** Alchemilla, Astilbe, Astrantia, Fox gloves
- **August-September:** Astilbe, Japanese Anemone, Hackonechloa
- **Late autumn:** Japanese Anemone, seedheads and structure from grasses

### What I was thinking:

The border is in shade until the early afternoon which rules out real sun loving plants, but then it receives full sun when the sun is at its strongest which excludes some of the more delicate shade loving plants. The plants I have chosen should be able to cope well and thrive in these conditions. I used a few plants which are already present in the garden to create a visual connection with other parts of the garden, such as Japanese Anemone and Astrantia but using different cultivars for interest. I also wanted to introduce you to plants which I think would do well in other parts of the gardens, especially along the sides with the shrubs so that if you like them in this border you might want to try them in different areas, for example the Hackonechloa grass would look great around the bird bath on the pillar, or Epimedium would do great under the shrubs where it's a bit bare currently. Some like the Alchemilla mollis and the foxgloves happily seed themselves around the garden, are great for wildlife and add to a natural feel. In terms of colours, I kept it quite simple focussing on pinks, white and greens. As the border can be viewed from three sides, I tried to create a dynamic rhythm which makes for interesting and different views from different sides.

### Phase 2

To increase interest in early spring it would be great to underplant with some bulbs in autumn, in particular daffodils as there are quite a few around the garden and then I was thinking Anemone blanda which is a delicate wood anemone.

# PLANTING & AFTERCARE NOTES

## Planting Notes

- Improve soil with compost before planting
- Plant at the same depth as pots
- Space plants evenly as shown on the plan

## Aftercare

- Water regularly for the first 4–6 weeks
- Cut back perennials in late winter
- Divide plants every few years if overcrowded

## Optional services

- Plant sourcing links — £25
- Plant ordering & delivery — quoted
- Professional planting — quoted
- Annual border review — £40

For ongoing care, see my **Garden Maintenance Plan** on [gardenerdorchester.co.uk](http://gardenerdorchester.co.uk)