

Massachusetts Department of Correction

Program Description Booklet

Thomas A. Turco III
Commissioner

June 22, 2016

Table of Contents

Mission & Vision Statement	3
<i>Massachusetts Department of Correction, Reentry Continuum</i>	4
<i>Program Division Services (Departmental Services)</i>	5
<i>MassCor Correctional Industries</i>	11
<i>Education and Training</i>	12
<i>Institution Specific Program Descriptions</i>	18
<u>Secure Facilities</u>	
MCI Cedar Junction	31
MCI Concord	32
MCI Framingham	34
MCI Norfolk	36
MCI Shirley	38
North Central Correctional Institution	40
Old Colony Correctional Center	42
Souza Baranowski Correctional Center	44
<u>Community Corrections</u>	
Boston Pre Release Center	45
MCI Plymouth	46
MCI Shirley, Minimum	47
North Central Correctional Institution, Minimum	48
Northeastern Correctional Center	49
Old Colony Correctional Center, Minimum	51
Pondville Correctional Center	52
South Middlesex Correctional Center	53
<u>Specialized Facilities</u>	
Bridgewater State Hospital	55
Massachusetts Treatment Center	57
Massachusetts Alcohol and Substance Abuse Center	58

Massachusetts Department of Correction

Mission Statement

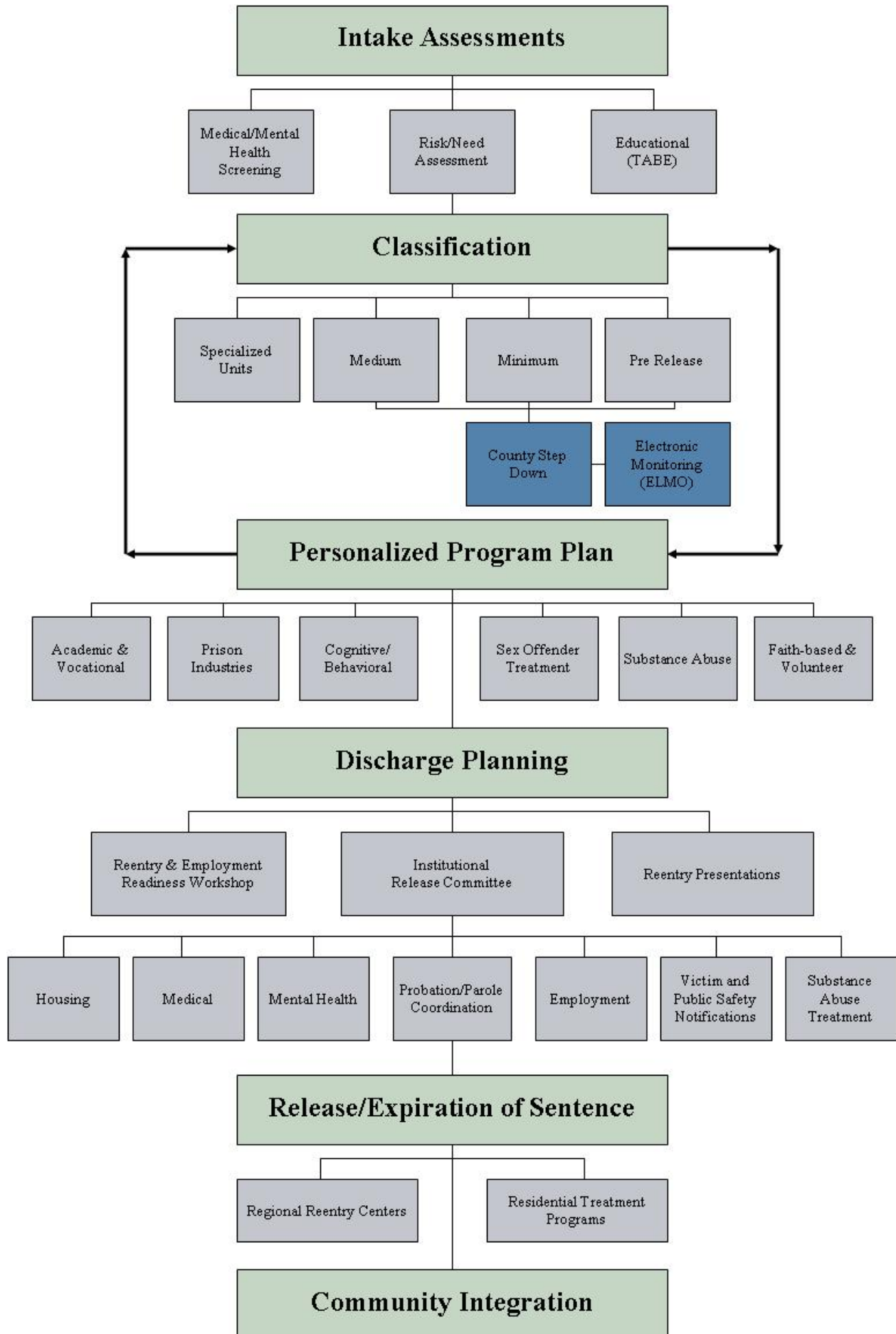
The Massachusetts Department of Correction's mission is to promote public safety by managing offenders while providing care and appropriate programming in preparation for successful reentry into the community.

Manage - Care - Program - Prepare

Vision Statement

The Massachusetts Department of Correction's vision is to effect positive behavioral change in order to eliminate violence, victimization and recidivism.

Massachusetts Department of Correction Reentry Continuum



Program Division
Services and Programs

Religious Services

The Department provides a variety of religious services, which are supervised and coordinated by chaplain staff. Volunteer clergy and community churches assist chaplains in the provision of services. Chaplains provide regular religious services, religious education and pastoral care. In addition, chaplaincy services include Bible Study, Prayer Groups, Christian Fellowship, Christian Twelve Step, Parenting Groups, Family Religious Services, Religious Seminars and Holiday Observances. The Department recognizes that Chaplaincy Services are important in changing criminal behavior by helping the inmate develop prosocial values. *These services are available at all facilities.*

Recreation Services

The Department offers a wide variety of staff supervised recreational and leisure time activities designed to reduce inmate idleness and teach pro-social skills to use their time constructively. *These services are available at all facilities.*

Volunteer Services

There are currently approximately 1,500 volunteers providing a variety of services that supplement established departmental programs. Volunteer services include faith-based, substance abuse, self help, support groups, literacy, cognitive skills and cultural awareness. Volunteer services enhance programming and the process of reintegration by disrupting the delinquency network and providing inmates with a network of pro-social community members and activities. *These services are available at all facilities.*

Community Partnerships

The Department has established partnerships with community based organizations and other state agencies with the goal of enhancing public safety and providing inmates with support and critical linkages to community based organizations.

Community Partnerships and External Stakeholder Collaborations

- Representatives of the Program Services Division and Classification Division serve on the Hampden County Reentry task force. The task force includes multiple criminal justice and social service stakeholders and is designed to identify barriers and resources associated with offenders reentering the greater Hampden County area.
- The department is collaborating with the Hampden County Sheriff's Office to facilitate the Hampden County Reentry program. This program targets high risk state offenders towards the end of their sentence. The objective of the program is to step down offenders to the community and reconnect them with their family/support systems, potential employers and community based providers.
- A Memorandum of Understanding between the Department of Correction and the Social Security Administration was developed to establish a process for offenders to secure a replacement social security card prior to release.
- MassHealth and the Department of Correction continue to partner to ensure releasing offenders are provided with medical coverage upon release. This partnership creates a continuum of care that allows for a smoother transition to the community and enables discharge planners to schedule medical and mental health appointments prior to an inmate's release.
- The Department of Correction has established a partnership with the Boston Police Department and other local criminal justice agencies in an effort to promote offender reentry while enhancing public safety. The Department of Correction regularly shares intelligence and other relevant information regarding offenders releasing from state prison to the greater Boston area. This partnership is intended to create a transparent transition from prison that better prepares the community and criminal justice agencies to respond to the both the needs and potential risk presented by the releasing offender.

- The Department of Correction is collaborating with Probation in an attempt to expand information exchange to enhance offender accountability and access to community based resources.
- The Department has partnered with Veterans Affairs (VA) to provide services to discharging veterans. The VA assists with determining veteran's benefits and eligibility in the areas of housing, employment, education, medical/mental health and substance abuse services. Staff from Reentry Services meets with VA on a quarterly basis to exchange information and enhance services.
- ROCA Pay for Success – the department is collaborating with the Commonwealth's Pay for Success project which is a program for young men entering the community from custody. It is a voluntary, outcome driven, behavioral health intervention. ROCA's mission is to help disengaged and disenfranchised young men move out of violence and poverty.
- A Memorandum of Agreement between United Teen Equality Center (UTEC) and the Department of Correction was established to offer supportive re-entry services to young adults returning to Lowell and Lawrence communities. Releasing offenders between 18 and 24 years old at time of release are eligible. UTEC strives to connect young adults to employment and educational opportunities and operates an integrated Workforce Development Program which includes GED classes, life skills workshops, mental health services and substance abuse services.
- SPAN Inc services are open to individuals who are returning to the greater Boston area, with some specific geographic specificity depending on individual programs. The goal is to begin work with as many inmates as possible prior to their release from incarceration and to continue services through the release process as inmates return to their communities.
 - HIV Services: Span offers several HIV services all designed to assist individuals to prepare for release, access and maintain health services when released, and make a successful transition to the community with particular emphasis on health maintenance. Some services begin inside the correctional facilities while others are only provided in the community.
 - Employment Related Services: Span offers several employment assistance services through grants from the US Department of Labor. The overall goal of the programs is to assist clients with obtaining and retaining employment to become independent and self-sufficient.
 - Women's Services- MISSION RAPS: Maintaining Independence and Sobriety through Systems Integration, Outreach, and Networking: Re-entry and Peer Support assists women with dual diagnosis of substance abuse and mental health to make a successful and supported reintegration to the greater Boston community.
 - Substance Abuse Services: Boston Offender Needs Delivery (BOND) offers substance abuse and case management services based on the MISSION model to men and women with substance abuse and co-occurring mental health issues who are wrapping up from incarceration.

Self-Improvement Groups

Inmate Self Improvement Groups are structured inmate coordinated groups designed to reduce inmate idleness and enhance reentry by providing offenders with a forum to develop interpersonal communication, problem solving and basic life skills. The following are approved Self Improvement Groups:

- | | |
|---|--|
| • <i>African Heritage Coalition Program</i> | • <i>Longtermers Group</i> |
| • <i>American Veterans in Prison</i> | • <i>Pawn Pushers</i> |
| • <i>Croche for the Ill</i> | • <i>Second Degree Lifers Group</i> |
| • <i>Fellowship Discussion Group</i> | • <i>Spanish United</i> |
| • <i>Imagination Art</i> | • <i>United for Gay, Bisexual and Transgender Progress</i> |
| • <i>Latino-Hispanic Heritage Group</i> | |

Vendor Facilitated Core Programming ~ Spectrum Health Systems, Inc.

Correctional Recovery Academy (CRA)

The CRA is an intensive skill-based residential substance abuse treatment program located at four institutions with a capacity of 518 beds. The CRA targets substance abuse and relapse prevention. The program utilizes rolling admissions and combines the elements of a therapeutic community's social learning approach with an advanced cognitive behavioral curriculum. *This component of treatment is available at MCI-Concord, MCI Norfolk, MCI Shirley Medium, MCI Shirley Minimum and Old Colony Correctional Center.*

CRA Graduate Support Program

Graduates of the CRA may apply to participate in the peer support program. Peer participants are responsible for co-leading groups under the supervision of the CRA counselor. Graduates are also required to attend the community meetings and the weekly continuing care plan group. *This component of treatment is available at MCI-Concord, MCI Norfolk, MCI Shirley Medium, MCI Shirley Minimum and Old Colony Correctional Center.*

The Graduate Maintenance Program

This program is offered to graduates of the residential substance abuse programs who have returned to general population. During Graduate Maintenance, the program concepts are reviewed, program skills are practiced, and there is individual work on a recovery plan. *This program is available at MCI-Shirley medium, MCI-Shirley minimum, MCI-Concord, Northeastern Correctional Center, Boston Pre-Release Center, MCI-Norfolk and Old Colony Correctional Center Medium, and Old Colony Correctional Center Minimum.*

Medication Assisted Treatment Reentry Initiative (MATRI)

The purpose of the Medication Assisted Treatment Re-Entry Initiative is to provide pre-release treatment and post-release referral for opioid-addicted and alcohol-addicted inmates at participating sites in the Department of Correction (DOC). This program involves prison-based residential substance abuse treatment and collaboration with community based clinics to provide aftercare treatment. The goal is to facilitate transition into an outpatient substance abuse treatment program which employs a multi-faceted approach to treatment including the use of the medication Vivitrol/Naltrexone, counseling, and aftercare referral to community based providers. *This program is available to offenders who have a documented opioid or alcohol addiction and have completed or are enrolled in the Department's Residential Substance Abuse Treatment program. This program is available at Boston Pre-Release Center, MCI Concord, MCI Norfolk, MCI Shirley medium, MCI-Shirley minimum, Northeastern Correctional Center, Old Colony Correctional Center medium, Old Colony Correctional Center minimum, Pondville Correctional Center, MCI-Framingham and South Middlesex Correctional Center.*

Introduction to Treatment

This program is a four-week, twelve-session vendor facilitated program designed to prepare inmates to utilize the basic information and skills that they will receive through participation in future programming. *This program is available at MCI-Cedar Junction.*

Introduction to Twelve Step Programming

This program is a vendor facilitated four-week, twelve-session program designed to teach inmates how to access and utilize twelve step programming to enhance their recovery. *This program is available at MCI-Cedar Junction.*

Substance Abuse Education

This is a vendor facilitated program that meets for two hours per day, two times per week, for eight weeks. This program is designed to educate and raise awareness of the consequences of continued substance use. The focus of the groups is to educate the inmate about substances and issues related to their use. Emphasis is placed on biological, psychological, and social consequences of continuing to use substances while

incarcerated. *This program is available at MCI Cedar Junction, Old Colony Correctional Center, and Souza Baranowski Correctional Center.*

DDU/High Risk Offender Program

The DDU/High Risk Offender program is provided at MCI Cedar Junction and is directed at inmates that have been placed in the Departmental Disciplinary Unit (DDU) as a result of having displayed a history of staff or inmate assaults, gang activity, and chronic disruptive behavior and/or have been identified as a threat to the correctional system in general. A goal of this program is to provide inmates with the skills to prepare them for their return to general population and participation in more intensive programming. The program consists primarily of independent workbook assignments and small group activities using a cognitive behavioral treatment model. *The DDU/High Risk Offender program is available at MCI Cedar Junction.*

High Risk Offender Expansion-SBCC

The High Risk Offender program includes a continuum of care at Souza-Baranowski Correctional Center (SBCC) for those offenders who have completed the program at MCI-Cedar Junction. The program includes a skills maintenance program for offenders classified from the DDU to SBCC in order to capitalize on the initial gains made with the HRO program and to reduce the incidences of aggressive behavior at SBCC. The program includes a skills review phase, skills maintenance phase and an aftercare phase.

Criminal Thinking Program

This program is a vendor facilitated program designed to focus on altering the pro-criminal thinking patterns that have been identified as separating those who are serious repeat offenders from those who are not. The program focuses specifically on criminal sentiments and how to develop pro-social alternatives for them. The program assists the offender in developing pro-social alternatives to past activities and associates. *This program is available at MCI-Concord, MCI- Norfolk, MCI-Shirley medium, North Central Correctional Center, Old Colony Correctional Center and Souza Baranowski Correctional Center.*

Moving Forward

This is a vendor facilitated group that meets three times per week for eight weeks. The program is based on the Five Stages of Grief developed by Dr. Elizabeth Kubler-Ross. The group will focus on each stage of the life changing event to assist the inmate to get to acceptance of their sentence. The program utilizes a combination of curriculum driven classes and process groups so that the inmates may discuss and process the changes necessary to move to the next stage of grief. *This program is available at Souza Baranowski Correctional Center.*

Motivational Enhancement

Motivational Enhancement is an eight week program that meets two times per week. This program introduces participants to basic program concepts while encouraging positive behavioral change. *This program is available at Souza Baranowski Correctional Center.*

Bridging Treatment

This is a vendor facilitated program that meets for two hours per day, two times per week, for eight weeks. Detailed lesson plans instruct inmates on personal responsibility and self-efficacy for change, creating a foundation for future goal setting. The program will target issues of education, coping skills, and support. The emphasis is on education and developing coping skills to deal with symptoms and behaviors. *This program is available at Souza Baranowski Correctional Center.*

Violence Reduction

The Violence Reduction Program targets cognitions that contribute to violent behavior. The goals of the program are to decrease violent behavior and the likelihood of institutional disturbances. During the program inmates identify the specific cognitions which have led to their violent behavior. Once identified, they are taught pro-social strategies and skills to diminish the likelihood of continued violence. The program is facilitated by staff two to three times per week. *This program is available MCI Concord, Souza Baranowski Correctional Center, MCI Norfolk, North Central Correctional Institution, MCI-Shirley medium, Old Colony Correctional Center Medium.*

Core Skills

The department offers a vendor facilitated program to inmates housed in the Behavioral Management Unit with programming once a week for two hours. The program runs for approximately 4 months and utilizes a Core Skills curriculum. *This program is available at MCI-Cedar Junction.*

Reentry and Employment Readiness Workshop

The 10-day Reentry and Employment Readiness Workshop meets for 2.5 hours per day and is offered to inmates who have a defined release date. During the Reentry and Employment Readiness Workshop, reentry planners facilitate curriculum designed to assist inmates in the development of the necessary skills that are needed for successful transition back into the community. The focus of the workshop is employment readiness to include resume building, cover letter, job application, mock interviews and how to maintain employment. The workshop also includes social support, housing plans, financial awareness and budgeting, educational referrals, criminal impact and attainable goal setting. Every inmate who attends the workshop will receive an Employment Readiness Release Portfolio. This release document can include identification, resume, cover letter, practice job applications, WOTC forms, Federal bonding, MassCor work verification, transcripts, certificates, and licenses. Once the inmate has completed the workshop the portfolio is stored within the institution and distributed on the day of release. *The Reentry and Employment Readiness Workshop is available at all facilities except the Lemuel Shattuck Hospital.*

Project Peer Connection (PPC)

Project Peer Connection is a statewide reentry mentoring project providing one-to-one peer support to higher risk individuals who complete substance abuse treatment while incarcerated to help them lead drug-free, crime-free lives. The peer mentoring program is available to offenders releasing anywhere in Massachusetts. The goals of the program include providing experienced guidance in planning for reentry, overcoming obstacles to successful community living and providing a bridge from pre-release reentry services to community based resources.

Female Offender Program Continuum

Gender responsive and trauma-informed approaches have been incorporated into the framework of treatment services for female offenders. Specific tracks of treatment have been designed to address each offender's specific pathway into the criminal justice system with the goal of reducing the likelihood of recidivism by addressing the unique issues associated with female offenders such as trauma, abuse, relationship dysfunction, substance abuse and mental illness. The programs listed below are also available for female offenders. *This program is available at MCI-Framingham and South Middlesex Correctional Center.*

Motivational Enhancement

This program introduces participants to basic program concepts while encouraging positive behavioral change. The program is designed to motivate offenders to participate in more intensive programs to address their broader criminogenic need areas. *This program is available at MCI-Framingham and South Middlesex Correctional Center.*

The Graduate Maintenance Program

This program is offered to women with substance abuse issues who have completed their respective track of programming. During Graduate Maintenance, the program concepts are reviewed, program skills are practiced and there is individual work on a recovery plan. *This program is available at MCI Framingham and South Middlesex Correctional Center.*

First Step Program

First Step is a residential substance abuse program located at MCI Framingham. This program provides substance abuse treatment services to women, who have been sentenced, are awaiting trial, have been civilly committed pursuant to Massachusetts General Laws, c. 123 section 35, or have been identified as needing immediate detoxification and treatment. The treatment component consists of a 20 day schedule of classes on substance abuse education, relapse prevention, parenting and interpersonal skill acquisition. The major emphasis of this program is linking participants to aftercare services both in the facility and post-release in the community. *This program is available at MCI-Framingham*

Family Preservation

Family Preservation is designed to promote appropriate mother/child bonding, relationship building and communication. This program offers a wide range of services to include parenting education classes, parenting support, children's visit preparation, coordination and referral to available services, professional collaboration with state agencies, and special activity planning. This program also functions as a liaison between offenders and Department of Children and Families (DCF) for incarcerated mothers whose children are in the custody of DCF. *This program is available at MCI Framingham and South Middlesex Correctional Center (SMCC).*

A Family Reunification House is located on the grounds at South Middlesex Correctional Center is used for overnight and weekend visits. Graduates of the parenting education classes are eligible to be screened to participate in the Family Reunification House program. This program allows mothers nearing release to have progressively less supervised visits with their children.

Vendor Facilitated Core Programming ~ Forensic Health Services.

Sex Offender Treatment Program

The Department of Correction offers a comprehensive Sex Offender Treatment Program (SOTP). There are two satellite sites where an introduction program is offered although a vast majority of the program is facilitated at the Massachusetts Treatment Center, a facility designated exclusively for the purpose of sex offender treatment. The SOTP is designed to reduce an offender's risk of re-offending.

Assessment and Treatment Introduction

The first phase of the Sex Offender Treatment Program (SOTP) is the Assessment and Treatment Introduction. The primary focus of this program is motivation and engagement in the treatment process, which includes an introduction to treatment concepts and education and information about the benefits of treatment. *This program is available at MCI-Norfolk, NCCI-Gardner and Old Colony Correctional Center.*

Assessment and Treatment Preparation (ATPU)

Consistent with the Risk-Need-Responsivity Model, intensive involvement in a comprehensive evaluation is the primary focus of this phase. The purpose of the evaluation is to guide and direct treatment, including the identification of treatment intensity level and specific individualized treatment needs. *This program is available at the Massachusetts Treatment Center.*

Sex Offender Nonresidential Treatment Unit and Residential Therapeutic Communities

Treatment within a nonresidential treatment unit and a residential therapeutic community is delivered in various forms including group therapy, psycho educational classes, involvement in the therapeutic community, and other therapeutic tasks. *This program is available at the Massachusetts Treatment Center.*

Sex Offender- Maintenance Program

The goal of the maintenance program is to uphold treatment gains, continue to make positive changes in dynamic factors, and maximize successful reintegration. All completers are encouraged to participate in a maintenance treatment program. By the time offenders engage in the maintenance treatment program they have a fully developed Successful Reintegration Plan to help identify their individualized primary goods, appropriate means to attain these goods, internal capabilities, external opportunities, self-regulation strategies, and risk management strategies. *This program is available at MCI-Norfolk, NCCI-Gardner, Old Colony Correctional Center and the Massachusetts Treatment Center.*

Sex Offender- Successful Reintegration

Inmates serving less than 18 months are referred to a track of programming that focuses on reentry and planning for release. *This program is available at MCI-Norfolk, NCCI-Gardner and Old Colony Correctional Center.*

Sex Offender Treatment

The SOTP is a comprehensive program that provides a wide range of services including assessment, therapy, psycho-educational classes, and supplemental groups and activities as clinically indicated. Any state inmate at MCI-Framingham who has been convicted of a sexual offense or an offense of a sexual nature is eligible to participate in the SOTP. Any inmate who wants to participate must consent to treatment. The treatment goals for the females SOTP will be based on each individual's treatment needs but may include establishing and maintaining healthy intimate relationships, increasing understanding of healthy sexual development and boundaries, developing a positive sense of self, improving assertiveness and self-sufficiency, process traumatic experiences, and effective emotion regulation (Elliot et al., 2010). In addition to gender-responsive treatment targets, traditional goals of sex offender treatment are applicable to female offenders (Giguere & Bumby, 2007). Treatment targets for the female SOTP include accepting responsibility, modifying cognitive distortions, processing trauma and emotional tolerance, managing deviant arousal, identifying risk factors, enhancing empathy, and developing a strengths-based Successful Reintegration Plan. Different offense pathways will be considered when developing the individualized treatment plans (Giguere & Bumby, 2007).



MassCor Correctional Industries

The mission of Correctional Industries is to instill a positive work ethic in offenders by providing training and skills for a successful reentry into the community through work opportunities, while ensuring the highest level of customer service by providing a quality product at a competitive price. Through work assignments offenders develop occupational skills and discipline that enhances successful reintegration. With acquired on the job training and work ethics gained through Correctional Industries, released offenders have a greater chance of being gainfully employed and succeeding after their release. Current certification programs and upcoming certifications are made available to all eligible incarcerated individuals. Correctional Industries employs over 450 offenders at eight institutions. The workforce has the opportunity to work with state of the art equipment to stay current in the outside employment field. The goal is to employ the maximum number of offenders consistent with effective use of program capital. MassCor has created numerous programs and certifications in order to give offenders opportunities to gain marketable skills and a better chance of securing employment in our communities thus reducing the possibility of recidivism.

Division of Inmate Education and Training

The mission of the Division of Inmate Training and Education is to prepare offenders for successful reentry into the community by providing comprehensive academic and vocational programming based upon individual risk and need. And further, reinforce social and career skills that are needed for offenders to transition into productive members of society.

Research tells us that educational and vocational achievements reduce recidivism:

- The Three State Recidivism Study, (Correctional Education Association/Office of Correctional Education, US Department of Education 2001) determined that for participants in prison education programs, recidivism was reduced by 12% in Maryland, 28% in Minnesota and 19% in Ohio.
- Our own recidivism study published in 2006, concluded that receiving a GED in prison reduced recidivism by 17%.
- The Washington State Institute of Public Policy completed an exhaustive meta-analysis of a wide variety of correctional program studies done across the country, and in 2006, published its *Evidence-Based Adult Corrections Programs: What Works and What Does Not*. It found that adult basic education programs in prison reduced recidivism by 5.1% and for vocational programs, a remarkable 12.6%.
- The MA Department of Labor reports the less the 25% of jobs available in Massachusetts are available to a person without a high school diploma or Equivalency.

Research reveals that nearly one half of inmates coming into correctional custody do not have a high school diploma or equivalent. Most do not have a work history. Research also tells us that if an inmate is to have the chance to return home successfully and not re-offend, a job and the means to support him/herself and family is critical. We must reduce the likelihood that inmates will commit another crime, thus increasing public safety by providing education and training that will assist inmates in obtaining employment.

Emphasis is placed upon competency achievement, development of basic literacy skills and the acquisition of salable skills along with an appreciation of the work ethic. To complete these tasks, eight school principals and school counselors coordinate classes taught by 76 full time and 38 part time teachers and vocational instructors. The Division's responsibilities include teaching academic and vocational programs, providing educational counseling services, assessing each inmate at reception and classification by administering the Test of Adult Basic Education (T.A.B.E.) and administering the High School Equivalency (Hi-SET) (previously GED) test. The Division is the one of the largest high school equivalency testing centers in Massachusetts administering nearly 600 tests last year.

I. Assessments

As each new inmate comes into custody educational background information is obtained and they are required to take the Test of Adult Basic Education (TABE). The TABE test provides a grade level in math, reading and language. Speakers of other languages are given the TABE CLAS E. Education counselors at each institution will receive this information when an inmate is transferred there and they will discuss educational alternatives and will place the inmate in appropriate classes or on waiting lists.

II. Grants

The Division of Inmate Training and Education receives three grants from the Massachusetts Department of Elementary and Secondary Education, and a Second Chance Act grant from the U.S. Department of Justice that support staff and program supplies at several institutions, which are critical in providing necessary education and vocational services.

III. Educational Programs

Core Academic Programming-*ABE Continuum*

Adult Basic Education I (ABE) and II

Adult Basic Education is designed to serve those students who are struggling with basic reading, writing, and math skills. These individuals are functioning below the sixth grade level. ABE provides students with the academic skills that are necessary for entrance into adult secondary courses. ABE focuses on reading, language, and mathematics with student progress being measured by the Tests of Adult Basic Education (TABE). (GLE 0.0→5.9)

Pre-Adult Secondary Education

The Pre-Adult Secondary Education (Pre-ASE) class is designed to prepare intermediate level students for the ASE Program where students prepare to take the HiSET (High School Equivalency) exam. The class's focus is on reading comprehension, writing skills, math, social studies, and science. These individuals typically function between sixth and ninth grade levels according to TABE scores. (GLE 6.0→8.9)

Adult Secondary Education

The Adult Secondary Education (ASE) program is specifically designed to prepare students to successfully take the HiSET (High School Equivalency) exam. The class focuses on reading, writing, math, social studies, and science – the five main components of the HiSET exam. These individuals typically function above the ninth grade level according to TABE scores. (GLE 9.0→12.9)

LEP Continuum

English as a Second Language (ESL) 1-Beginner

English as a Second Language is a language development program designed for the adult learner with limited English proficiency. The primary emphasis of the program is to provide students with the fundamentals of speaking, reading, writing, and listening skills in English so they may be mainstreamed into academic classes and/or participate in vocational programming. The three-level program is taught exclusively in English and is available to those students whose native language is other than English.

ESL 2-Intermediate

This program works to develop and refine skills needed in conversation beyond survival needs. Focus is on reading comprehension of short pieces, vocabulary development, and oral answers to reading questions. Writing skills focus on paragraph organization and essay construction and formal English Grammar. Informational articles as well as short stories are introduced. Practice is given in letter writing, both informal and formal business letters, complaints and requests.

ESL 3-Advanced

In this program, focus is on more complex English grammar, sentence structure, and punctuation, including self-editing skills. Practice is given in writing and editing two to three paragraph essays. Reading comprehension and academic vocabulary is stressed and applied to word problems in mathematics as well as geography and history selections and informational historical and literary documents. Emphasis is placed on preparing the student to advance from ESL classes to regular academic classes and vocational programs.

Advanced Academic Programming

Tutor Training I

Inmates participate in a tutor preparatory class which focuses on strategies of instruction and communication. After completion of this class, inmates are assigned to teachers to provide classroom assistance and support instruction.

Tutor Training II

Having completed Tutor Training I, students in this program are assigned to work with an academic teacher assisting in the classroom.

Boston University Program (I-XII)

Students who meet the eligibility requirements by passing an entrance exam and interview have an opportunity to achieve a Bachelor's Degree in Liberal Studies from BU's Metropolitan College. Funded in full by Boston University, this program operates at MCI Norfolk and MCI Framingham.

Post-Secondary Education

Taught by staff academic teachers with a focus on a critical thinking, classes are offered in a variety of subjects including literature, advanced mathematics, college study skills, and financial literacy. These programs are offered to students who have a high school or equivalency diploma.

Inside Out

Offered at MCI Framingham and Boston Pre, this program is offered to students who have a high school or equivalency diploma. Taught by an outside college instructor, this criminal justice class combines college students from the outside with inmates, collectively covering current events and topics within the Criminal Justice field.

Core Vocational Programming

Auto Body Repair

In this program, the students study design and engineering of auto body construction, body repair, use of MIG welding, painting, estimate writing, insurance policy understanding, automotive mechanical systems, air bag and safety restraint systems, vehicle restoration, and automotive HVAC systems with emphasis on mobile air conditioning which will provide students with the opportunity to obtain a Mobile Air Conditioning Society license (MACS).

Automotive

Fundamentals of auto mechanics are taught by providing book work in addition to hands-on training achieved by working on state vehicles. Students work toward Automotive Service Excellence (ASE) certification and become proficient in shop safety, electric systems, scan systems, tune, tune-ups, tires and wheels, restraint systems, brake systems, and air conditioning systems. Students are able to earn OSHA 10 Safety Training Certification and Mobile Air Condition Society (MASC) Worldwide, Section 609 Certification.

Barber Training

The Barber Training Program is a professionally licensed, 1000-hour, state credentialed program that includes a 12-18 month commitment from potential students. Students become proficient in professional ethics, hygiene, shaving and facial hair design, history of barbering, the use of tools and equipment, safe work practices, men's haircutting and styling, barbershop management, and job search. This program encompasses all the practical applications of barbering, training and education required to become a licensed professional barber in the state of Massachusetts.

Building Trades

In this program, safety, rough and finished carpentry, sheetrock work, and wood working are covered. Hands-on experience is provided by either completing institutional projects or mock-ups, and students become NCCER Certification eligible and receive OSHA certification.

Cosmetology

In a class of 12 students, training is given in all aspects of hairstyling, skin care and nail beautification. Combining written and hands on work, 1000-hours are achieved, preparing students to take to take the Massachusetts State License Examination in Cosmetology.

Culinary Arts: Foundations I

Culinary Arts is structured to provide both theory and hands-on experience in the areas of applied foodservice sanitation and hygiene and in professional cooking. The course of study generally runs for nine months with the first three months focusing on obtaining the knowledge and skills required to successfully pass the National Restaurant Association's Education Foundation's ServSafe certifying exam covering sanitation and hygiene. The next six months focuses on Foundations Level 1 Restaurant Management and Culinary Arts. A Foundations Level II component has been added to the curriculum to further enhance an inmate's job readiness upon release.

Small Engine Repair

This class provides the students training in the outdoor power equipment field. Students learn troubleshooting and repair in all engine systems. Students learn entry level skills to better themselves for employment. Upon completion, students take the Equipment and Engine Training Counsel (EETC) exam to become certified. Students are required to take the 4 stroke exam, and the 2 stroke exam is optional.

Welding

This eight-nine month (200-hour) training program teaches basic job skills, safety protocols, and a variety of welding techniques used to weld different metals including steel, stainless steel, and aluminum. Upon successful completion of this program, students test for welding certifications issued by the commonwealth of Massachusetts, which are recognized nationwide.

Technology Programming

Computer Skills I

The Computer Skills Program is designed to provide students with basic technology skills. This program consists of four components: Introduction to Computers, Microsoft Office 2010 and Windows 7, Microsoft Word 2010, and Microsoft Outlook 2010. A high school diploma or high school equivalency is not required.

Computer Skills II

The Computer Skills II Program is being added as a follow-up to the Computer Skills I Program. Computer Skills II consists of three components: Microsoft Office PowerPoint 2010, Microsoft Excel 2010, and Microsoft Access 2010. A high school diploma or high school equivalency is not required.

IT Essentials

This program teaches inmates the operation and repair of computers, laptops, and printers with up-to-date technology, resulting in Cisco certification. This course offers a broad-based introduction to the field of Information Technology (IT) including its evolution, current trends and future directions. Students will be introduced to the various aspects of IT along with an understanding of the technical support that is provided to employees and organizations. IT fundamentals, operating systems and hardware, end user support, and networking will be covered.

Computers for Schools Program

Using computers donated from private business, inmates that have been certified by IT Essentials are taught the process of refurbishing computers including cleaning inside and out, wiping hard drives clean of any software, and running a battery of tests on computer components. Computers are mined for parts, and these parts are combined to produce a working finished product which can then be donated to Massachusetts public schools.

Supplemental Academic Programming

Transition Skills (non HSE track)

For those unable to progress in the ABE continuum, this program seeks to provide inmates with social, emotional, financial, and vocational life skills necessary for integration into the workplace and into society in general

Title I

Title I is a program that provides eligible youth age 20 and under with opportunities to meet the same challenging state academic content and achievement standards expected of all students. This is intended to support successful transition from a community residential environment to further education/training and/or employment. [It is offered in conjunction with the ABE program]. Students currently enrolled in the academic track are given support for classroom success.

Special Education

To be eligible for this program, students must qualify for special education as per 603 CMR 28.00: Special Education. This course is designed to provide individual or small group instruction to all inmates under the age of 22 who have been diagnosed with learning or developmental disabilities. Individual testing is utilized to determine functional levels, strengths, weakness, and learning styles.

Education: Specialized Housing Units

For those inmates housed outside of general population due to mental health, discipline, or protective custody status, a variety of academic, technology, and vocational programs is supplied where possible.

Vocational Certificate Programs

ServSafe

This one- to four-month program is designed to provide students with the education necessary to earn a nationally recognized ServSafe Certification. This certification is useful for obtaining employment in the food service industry. Students who complete the course then take the National ServSafe Exam, and upon completion of the ServSafe program and certification, students are eligible to apply for a position in the Culinary Arts Program. Students are responsible for payment of the ServSafe exam.

OSHA

This two-day, ten-hour certification safety course includes electric and fire safety, slip and fall prevention, chemical safety, and more. This course satisfies the OSHA 10 certification requirement for workers on construction sites. Students are required to provide the \$5 exam fee. No GED or high school diploma is required and is open to low risk/low need inmates.

Vocational Supplemental Programming

Horticulture

This program trains students to develop skills in horticultural practices including techniques on plant production, garden and landscape maintenance, as well as lessons in plant biology.

Wheels for the World

This program teaches specific skills critical for obtaining employment upon release. It provides lessons and operates as simulation of a business to provide practical experience in using a variety of skills for a job search. Included goals are promoting self-confidence, learning to make basic judgments and decisions used in the healthcare industry, gaining knowledge of employment options, and how to smoothly transition into other related occupations and training programs.

Culinary Arts: Foundations II

Culinary Arts Foundations II will serve as an extension of Culinary Arts Foundation I and is a more advanced course dealing with restaurant, kitchen, and management skills covering such topics as marketing and sustainability.

INSTITUTION SPECIFIC PROGRAM DESCRIPTIONS

AA Reentry Fellowship Program: This program is considered among the most effective treatment approaches for addiction. A growing volume of research shows that programs that engage individuals like AA are most effective for changing addictive behavior. *This program is available at Northeastern Correctional Center and North Central Correctional Center.*

AAWOL: This program is an in-depth study of the 12 steps that Alcoholics Anonymous and Narcotics Anonymous utilize. This is a cognitive behavioral self-awareness program with an emphasis on a higher power. *This program is available at Boston Pre Release Center and Pondville.*

A Book from Mom: This program is designed to enhance literacy in children. A children's library is available for women to select age appropriate books to read during visits with their children. After the visit, children are allowed to leave the visiting room with a book from Mom. The child is allowed to receive a new book during each visit to create his/her own personal library at home. Books are also made available for women to mail home to children during the holidays and on birthdays. *This program is available at MCI Framingham.*

A Journey Into the Joy of Christ – This program is a six week program that covers: Introduction to the Christian Spiritual Journey, How the Mind Reacts to One's Changing Life Situations, God Provides All We Need, To Follow Jesus, We Must Leach Attachments Behind, Principal and Foundation, and Central Importance of Faith. This is an opportunity for inmates to develop Christian values as to bring about a moral or ethical conversion. *This program is available at NECC.*

A Place for Mom: This program is designed for mothers who are seeking to improve their relationships and involvement with their children. South Bay mental health clinicians engage the inmates in therapy and kinship counseling to facilitate the mother's reintegration in the family system. *This program is available at MCI Framingham.*

Advanced Communication Skills: This group is offered to committed patients. This is a time limited psycho educational group designed to introduce participants to effective communication skills. Patients need to be able to tolerate a group setting and have the ability to process abstract concepts. This group will learn to identify communication styles and to express their needs assertively in every day situations. *This program is geared toward the special needs patient population at Bridgewater State Hospital.*

Advanced Writing for Results: This is a job-readiness program that advances the DOC's goals of reducing recidivism. This class provides the building blocks of successful resumes, cover letters and proposals. *This program is available at Souza Baranowski Correctional Center.*

Alcoholics Anonymous: A volunteer facilitated working support program where inmates learn about triggers to their behavior, understand past behavior and learn how to build a new, healthier sober lifestyle. *This program is available at Bridgewater State Hospital, Boston Pre-Release Center, MCI Cedar Junction, Massachusetts Treatment Center, MCI Norfolk, MCI Plymouth, North Central Correctional Institute Medium & Minimum, Old Colony Correctional Center Medium, Pondville Correctional Center, MCI Concord MCI Framingham and MCI Shirley Medium & Minimum.*

Alternatives to Violence (AVP): A volunteer facilitated program that teaches inmates how to reduce violence by introducing alternative ways of resolving conflict resulting in a diminished need to resort to violence. Workshops focus on conflict resolution. *This program is available at MCI Cedar Junction, MCI Norfolk, MCI Shirley, Northeastern Correctional Center, North Central Correctional Center Medium and Minimum, Old Colony Correctional Center Medium, and Souza Baranowski Correctional Center.*

Amachi Program - This is a mentoring program developed to provide support to children who have or have had incarcerated mothers. This program is facilitated through the Big Sister and Big Brother Program of Greater Boston. The program partners with faith-based organizations, community and civic organizations to match children to caring individuals. The age identified for this program is children between the ages of 7-15. *This program is available at MCI Framingham.*

American Vet Dogs-The Guide Dog Foundation sponsors this program which provides assistance dogs to disabled veterans and active military personnel. *This program is offered at MCI-Framingham, Old Colony Correctional Center Medium, Pondville Correctional Center and South Middlesex Correctional Center.*

American Veterans in Prison: This program serves to educate incarcerated veterans in the areas of housing, taxes, motor vehicle registration, outreach and counseling. *This program is available at The Massachusetts Treatment Center.*

Anger Management: Volunteer facilitated program designed to help inmates identify and begin to deal with the root causes of their anger. *This program is available at The Massachusetts Alcohol and Substance Abuse Center, MCI Cedar Junction, MCI Framingham, and MCI Shirley.*

Anger Management/SAMHSA-Volunteer facilitated program designed to help inmates identify and begin to deal with the root causes of their anger. *This program is available at Bridgewater State Hospital and South Middlesex Correctional Center.*

Art Program: Volunteer facilitated programming. Inmates learn skills in different art modalities and the opportunity to work on individual projects. The goal of this programming is to encourage inmates to develop self-esteem and self-awareness through the expressive arts. *This program is available at The Massachusetts Treatment Center and Northeastern Correctional Center.*

Art Therapy: Staff supervised art program which offers morning and afternoon classes, five days per week. Classes are offered in all art modalities. *This program is geared toward the special needs patient population at Bridgewater State Hospital.*

AVP Writing Program: To augment current AVP workshops, the writing program component offers men who have completed the training for facilitators a chance to develop their writing and reading skills. *This program is available at North Central Correctional Center.*

Basic Computer Skills: The program is designed for participants to master basic computer operation and become proficient in Microsoft Word, Excel and Power point. *This program is available at MCI-Concord Pondville and Massachusetts Alcohol and Substance Abuse Center.*

BEACON Program: (Behavior, Emotions and Changing Oneself): Volunteer facilitated, twelve week program which explores human behavior and emotions with the intent of increasing skills for identifying emotions and developing new strategies and behaviors to respond more effectively. *This program is available at South Middlesex Correctional Center, MCI Cedar Junction, MCI Shirley, North Central Correctional Institution Medium and Minimum, and Souza Baranowski Correctional Center.*

Beacon Study Group: This program is for participants who have completed the Beacon Program. This program encourages the participant to continue working on emotional literacy. *Available at MCI Concord*

Body & Mind Fitness: Volunteer facilitated wellness program incorporating fitness and stress reduction exercises. *This program is available at Bridgewater State Hospital and South Middlesex Correctional Center.*

Book Discussion Club I, II, III

Changing Lives through Literature, Cultural Identity and Book Discussion. *This program is available at MCI Concord, MCI Shirley and Souza Baranowski Correctional Center.*

Book Giveaway for Children: This volunteer facilitated program encourages children to read and provides books that can be taken home by the child. *This program is available at MCI Concord.*

BoyScouts Beyond Bars: This is a family preservation program which affords incarcerated mothers and grandmothers the opportunity to bond with their male children and grandchildren. *This program is available at MCI Framingham.*

BSH Newsletter: The newsletter, which specific to Bridgewater State Hospital, provides the hospital a tool to share information with the inmates, staff and family members. The newsletter highlights program opportunities and other hospital information.

Bridging the Gap: This program is designed for those state inmates who are releasing within the next 12 months. The goal of Bridging the Gap is to better prepare this long term population for their eventual release to our

communities. To accomplish this goal we invite and welcome monthly community speakers to our groups as well as introduce reentry topics, group discussions and process groups. BTG meets at least three times a month. BTG inmates are all offered an opportunity to participate in a Labyrinth walk conducted by volunteers. Women will leave with a portfolio that will include SAGE results, resume, resources, certificates etc. *This program is available at MCI Framingham.*

Buddhist Meditation Retreat: This program incorporates both Zen meditations, a Buddhist spiritual practice of developing mindfulness. *This program is available at Bridgewater State Hospital.*

Building Foundations: This is a volunteer facilitated reentry program which provides the support necessary to secure employment, housing, transportation upon release. *This program is available at South Middlesex Correctional Center.*

Cancer Survivor Support Group: This program is for inmates who have a diagnosis of cancer and would like to meet to share information and provide support to each other. *This program is available at South Middlesex Correctional Center.*

Cardiovascular Management: In conjunction with UMASS, this program is designed to enhance self management and improve over-all quality of life for those inmates who are affected by heart disease. *This program is available at MCI Concord.*

Career Skills Seminar: This course helps to develop career related skills in a hands on environment. This class teaches the importance of verbal and written communication skills. *This class is available at MCI Framingham.*

Catch the Hope: Vendor facilitated program that provides medical and social services to pregnant and post-partum inmates. *This program is available at MCI Framingham.*

Chess Club: Volunteer and/or staff supervised program where inmates learn how to play chess and participate in tournaments. This program provides a structured environment where chess enthusiasts from beginners to advanced players can learn more about the aspects of the game. *This program is available at MCI Concord, MCI Norfolk, Northeastern Correctional Center and Old Colony Correctional Center Medium.*

Child Custody Workshop: Volunteer facilitated 9-week workshop providing training regarding family law issues involving minor children. The program prepares women to advocate for themselves when addressing custody, adoption, visitation and guardianship. *This program is available at MCI Framingham.*

Clubhouse Educational and Peer Support Program: This program is dedicated to expanding employment, housing, educational, social and leadership opportunities to the patients of Bridgewater State Hospital who will soon be re-entering the community. *This program is available at Bridgewater State Hospital.*

City Mission Fellowship: Weekly meetings are held to discuss various topics and issues. Audio/visual presentations and guest speakers are used to guide and stimulate discussion. *This program is available at Old Colony Correctional Center.*

City Mission Society - Volunteers from the City Mission Society provide the Arts and Crafts Program, and the inmate prison newsletter "Behind the Wall". *This program is available at MCI Framingham.*

Cognitive Skills Workshops - Volunteer facilitated cognitive-based programs: Active Listening, Problem Solving, Setting Goals, Asking for Help, Assertive Communication, Negotiating, and Using Self Control. *This program is available at Bridgewater State Hospital, MCI Plymouth, MCI Framingham, MCI Norfolk, MCI Shirley Medium & Minimum, North Central Correctional Institution Minimum, Old Colony Correctional Center Minimum, Pondville Correctional Center, South Middlesex Correctional Center, Sousa Baranowski Correctional Center, Boston Pre Release, MCI Concord, and MCI Cedar Junction.*

Come on People: From the book "On the Path from Victims to Victors" this program teaches personal responsibility and encourages the changing of behaviors that limit chances for success. *This program is available at MCI Framingham.*

Companion Program: Staff facilitated program that provides training to inmates who then provide support and encouragement to inmate patients. *This program is available at Bridgewater State Hospital, Old Colony Correctional Center and MCI-Shirley.*

Computer Program: This program is facilitated through Library services. Basic computer skills are taught to patients. *This program is available at Bridgewater State Hospital.*

Computer Program (Basic Computer Literacy): Volunteer facilitated program teaching basic computer skills. *This program is available at Pondville Correctional Center and Boston Pre Release..*

Connecting the Dots: This program allows for the incarcerated parent to create an activities book which can be sent home to the child. *This program is available at Massachusetts Alcohol and Substance Abuse Center.*

Creative Writing: Teaches basic English Composition covering expository, descriptive and narrative writing, dialogue, and short stories. *This program is available at MCI Shirley and MCI Concord .*

Concord Public Library Program: Volunteer facilitated library program that allows inmates to request and borrow books out of the Concord Public Library. *This program is available at Northeastern Correctional Center.*

Count Down to Freedom Program: This DVD based program helps reduce recidivism and takes offenders step by step through the transition from incarceration to community integration. Candid interviews with professionals and ex-offenders offer a unique perspective on what offenders should expect to face throughout their journey from incarceration back to society. *This program is available at Bridgewater State Hospital, MCI Norfolk, Mass. Alcohol and Substance Abuse Center, Pondville Correctional Center, and South Middlesex Correctional Center.*

Creative Writing: Teaches basic English Composition covering expository, descriptive and narrative writing, dialogue, and short stories. *This program is available at MCI Shirley and MCI Concord.*

Croche For the Ill: The purpose of this program is to provide lap blankets for the elderly and for those receiving hospice care. This provides a positive outlet for the inmates affords them the opportunity to give back to the community. *This program is available at South Middlesex Correctional Center.*

Daddy Read To Me: The Read to your Child Program enhances the relationship between father and child. The goal is to form a bond which would reduce stress, which in turn will decrease the offender's rate of recidivism. *This program is available at Souza Baranowski Correctional Center.*

Daily Living Skills Program: Staff facilitated program designed to teach committed patients daily living skills with a primary focus on personal hygiene issues. *This program is geared toward the special needs patient population at Bridgewater State Hospital.*

Dance Leela: Volunteer facilitated program that promotes self-awareness, self-esteem, and a sense of calm through simple choreography and guided expressive dance. *This program is available at South Middlesex Correctional Center.*

Day Treatment Program: Vendor supervised program for treatment resistant patients who are chronically mentally ill. This program enables patients to develop the skills to gain insight into their disabling behavior. Patients are taught skills in the areas of basic living, hygiene, social skills, work habits, substance abuse and health. *This program is geared toward the special needs patient population at Bridgewater State Hospital.*

DCF Visit Coordination: Staff coordinates with the Department of Children and Families & facilitates on site Foster Care Reviews and supervised visits for inmates whose children are in the custody of DCF. Similar services are provided with child service agencies outside the Massachusetts area. Services are provided as well for Court Appointed Investigators, Guardian Ad Litem DYS, Residential placement and Adoption Mediators. *These services are available at MCI Framingham and South Middlesex Correctional Center.*

Developmental Service Program: The Developmental Service Program is staffed and funded by the Department of Developmental Services. This program prepares patients for release by making referrals for

eligibility with DDS. A major component of this program is social skills training. *This program is geared toward the special needs patient population at Bridgewater State Hospital.*

Dialectical Behavior Therapy - Skills Group Program (DBT): Staff supervised program that teaches patients social skills that will enable them to meet needs without engaging in violent and/or self-destructive behaviors. *This program is geared toward the special needs patient population at Bridgewater State Hospital.*

Doing The Right Thing: This program is designed to assist inmates with making ethical decisions. The program uses video seminars, role modeling and discussion facilitated by the instructor. *This program is available at Boston Pre-Release.*

Domestic Violence Program: Vendor facilitated ten-week psycho educational group, which focuses on treatment and prevention strategies for women involved in domestic violence situations. *This program is available at MCI Framingham.*

Don't Throw Us Away: Staff supervised and volunteer facilitated program that partners inmates with shelter dogs. The inmates work with a professional trainer for eight weeks in order to prepare the dogs for adoption by families. *This program is available at NCCI-Gardner Minimum.*

Eldercare: Chaplain supervised and volunteer coordinated program in which inmates create small crafts for senior citizen centers. *This program is available at South Middlesex Correctional Center.*

Emerald Gardening Program : A volunteer facilitated course designed that covers Introduction to Horticulture and Landscape Maintenance. *This course is available at Boston Pre Release.*

Emotional Awareness / Houses of Healing: Volunteer coordinated program designed to foster emotional and spiritual growth and promote responsibility and accountability toward ones self and others. Inmates are also taught skills to reduce disruptive behavior. *This program is available at Bridgewater State Hospital, Boston Pre Release, Massachusetts Alcohol and Substance Abuse Center, MCI Concord, MCI Norfolk, MCI Shirley, North Central Correctional Institution, Northeastern Correctional Center, South Middlesex Correctional Center and Souza Baranowski Correctional Center.*

Entrepreneurship 101-Venturing Out-: A course designed to introduce inmates to the fundamentals of small business. *This course is available at Northeastern Correctional Center and South Middlesex Correctional Center.*

Family Day Program: Offered four times per year, volunteers design structured activities that allow inmates to interact with their children. *This program is available at Northeastern Correctional Center.*

Family Issues Group: Staff facilitated group designed to help patients begin to explore feelings related to family issues and learn the skills needed to survive/cope with separation/conflict due to incarceration/hospitalization. *This program is geared toward the special needs patient population at Bridgewater State Hospital.*

Family Reunification House: A house located on the grounds at South Middlesex Correctional Center is used for overnight and weekend visits. Graduates of the parenting education classes are eligible to be screened to participate in the Family Reunification House program at SMCC. This program allows mothers nearing release to have progressively less supervised visit time with their children. Support and education, on such topics as healthy nutrition and meal preparation, is provided in this area to aid in attaining a successful mother-child visiting experience. *This program is available at SMCC.*

Fatherheart Program: Volunteer facilitated 8-week faith based program designed to assist offenders in family skills. *This program is available at Northeastern Correctional Center and Boston Pre Release.*

Father's Parenting Program: Volunteer facilitated 12-week course consisting of classes in moral and legal responsibilities of fatherhood. *This program is available at MCI Shirley, Northeastern Correctional Center and Souza Baranowski Correctional Center.*

Father/Child Homework Assistance Program: This program is designed to create opportunities for positive behavioral change by encouraging a shared experience between a father and his child while fostering an appreciation for education. The program targets literacy, parenting skills and family rebuilding. *This program is*

available at MCI-Norfolk.

Financial Literacy: This program consists of six different seminars that help prepare inmates reentering the community. Curriculum includes budgeting, credit, financial independence, taxes, investments and loans. *This program is available at MCI Framingham.*

Fully Alive Program: Chaplain coordinated, volunteer facilitated program that focuses on spiritual growth and choosing responsible living. Topics include relationships, recovery, anger management and understanding the relationship between attitudes, choices and consequences. *This program is available at Boston Pre Release, MCI Framingham and South Middlesex Correctional Center.*

Gardening and Landscaping: Volunteer facilitated program that encourages patience, responsibility, attention to detail and the ability to work as a team in problem solving to produce the desired result. *This program is available at MCI-Concord, Massachusetts Alcohol and Substance Abuse Center and Northeastern Correctional Center.*

Getting and Keeping a Job: Program designed to prepare inmates for job searching upon release. Topics include developing realistic expectations, utilizing employment resources, identifying interests, skills and values and preparing for interviews. *This program is available at Northeastern Correctional Center.*

GiftEd: This is a volunteer facilitated program designed to assist inmates in discovering their motivational gifts. The emphasis is on recognizing and developing employment skills to contribute towards a successful reentry upon release. *This program is available at North Eastern Correctional Center.*

Greenhouse and/or Garden Program: Staff supervised program during which inmates grow flowers and vegetables in designated individual garden plots. In some institutions volunteers provide basic horticultural education and/or the produce grown is donated to local charities. *This program is available at Massachusetts Treatment Center, MCI Cedar Junction, MCI Concord, MCI Framingham, North Eastern Correctional Center, North Central Correctional Institution Medium & Minimum, Old Colony Correctional Center – Minimum, Pondville Correctional Center, South Middlesex Correctional Center, and MCI-Cedar Junction.*

Guitar Program: A volunteer facilitator teaches the inmates how to play guitar, a creative way to spend leisure time. This program has been acknowledged as a positive vehicle to reduce stress and promote positive climate. *This program is available at Northeastern Correctional Center.*

Healthy Human Relationships: An eight-week, staff facilitated program designed to assist inmates in distinguishing between healthy and unhealthy relationships. *This program is available at MCI Framingham.*

Health Awareness (HIV/AIDS Education): Programming ranges from basic education and awareness to support groups for inmates who are HIV positive. Instructors include vendor and department staff, volunteers and inmates. *This program is available at Massachusetts Alcohol and Substance Abuse Center, MCI Concord, MCI Framingham, MCI Norfolk, MCI Plymouth, MCI Shirley, MCI Concord, North Central Correctional Institution-Medium and Minimum and Old Colony Correctional Center.*

Inmate Companion/Environmental Cleaning Program: This proactive program is designed to improve the hygiene practices of inmates, reducing the transmission of infectious microorganisms in the skilled nursing and assisted living units. *This program is available at MCI Framingham and MCI Shirley.*

Inmate Worker Companions: This program pairs inmates is designed to emphasize the mutuality of both the inmate workers and the patients. Successful programs such as this identify and stress ways that both parties give, and receive opportunities to exchange education, skills and friendship. *This program is available at Bridgewater State Hospital.*

Introduction to Horticulture: This program is designed to help participants understand the fundamental concepts of horticulture and teach the core skills required to produce small-scale sustainable gardens. This program is available at *Bridgewater State Hospital.*

Introduction to Motivational Enhancement: This program attempts to increase inmate motivation toward addressing their own behavioral needs no matter what their criminogenic risk factors are. *This program is available at MCI Cedar Junction.*

Jericho Circle Project: Volunteer facilitated group that targets a variety of criminogenic risk factors that are precursors to criminal behavior in an effort to develop integrity, accountability and emotional intelligence. *This program is available at MCI Norfolk.*

Job Search: Eight-week program designed to prepare inmates for job searching upon release. Topics include developing realistic expectations, utilizing employment resources, identifying interests, skills and values and preparing for interviews. *This program is available at Northeastern Correctional Center and Old Colony Correctional Center.*

Joys & Challenges of Human Relationships: Class identifies the ways in which behavior patterns contribute positively and negatively to forming healthy, caring relationships. *This program is available at Northeastern Correctional Center.*

Kids Corner: Program utilizes a corner of the visiting room at MCI-Concord where the small children of inmates can draw, hear stories and play with a few toys while their parents talk over their often-serious problems and issues. *This program is available at MCI Concord, MCI Framingham, MCI Shirley and North Eastern Correctional Center.*

Last Hope K9: The inmates learn a sense of purpose and responsibility through learning to teach dogs basic obedience skills. The goal of the program is to retain shelter dogs so that they can be adopted and become family pets. *This program is available at Old Colony Correctional Center.*

Leadership & Transformation Thinking: The program is a volunteer facilitated program developed by The End Violence Project which is a non profit organization with the vision of ending violence without violence. This program support offenders in successfully transitioning from prison back into society as they join their families and communities. *This program is available at MCI Concord, MCI Norfolk, North Central Correctional Center, Pondville Correctional Center, and South Middlesex Correctional Center.*

Life Skills: The focus of this program is to identify risk factors which may trigger impulsive behaviors and to encourage the development of good decision making in order to prepare the inmates to handle the day to day issues upon reentry. *This program is available at Bridgewater State Hospital.*

Longtermers's Group: This program is designed for inmates serving lengthy sentences in an effort to provide support and the skills needed to successfully cope with long term incarceration by encouraging participation in positive and productive activities. *This program is available at MCI-Framingham and Souza-Baranowski Correctional Center.*

Massachusetts Community Outreach Program: This collaborative reentry initiative between MCOI and the DOC facilitates spiritual, emotional and physical preparation for release and a smooth assimilation into society. *This program is available at Boston Pre- Release, Northeastern Correctional Center, MCI Norfolk and MCI Shirley.*

Math Skills for HS Grads and GED Holders: A review of math curriculum to encourage problem solving skills, and refresh memory of strategies, formula's and conceptual thinking. *This program is available at MCI-Concord.*

Menswork: Eight to twelve week program designed to provide creative educational services that support the personal and social rehabilitation of convicted offenders. *This program is available at MCI Cedar Junction, MCI Shirley and Souza Baranowski Correctional Center.*

Mindful Stretching and Breathwork: The Kripalu breathing and mindfulness exercises are designed to calm and settle participant. *This program is available at Bridgewater State hospital and South Middlesex Correctional Center.*

Mom & Me Art: Chaplain facilitated, volunteers involved in creating a variety of art with their moms. *This program is offered at MCI-Framingham.*

Money Smart: This program covers topics such as developing spending plans, budgeting skills, how to chose and maintain a checking account and the basics of building/repairing credit. *This program is available at MCI Concord, MCI Framingham, MCI Norfolk, MCI Plymouth, Pondville Correctional Center, and South Middlesex Correctional Center.*

Music Theory Program: Staff and/or volunteer supervised program that enables participants to learn basic music theory, comprehension and practice. Inmates join bands to rehearse and perform. In cell use of instruments varies among facilities. It is often limited to those inmates that can be utilized with headphones and do not disrupt the housing unit. *This program is available at Bridgewater State Hospital, Massachusetts Treatment Center, MCI Norfolk, North Central Correctional Institution, Northeastern Correctional Center, MCI Shirley Medium and Old Colony Correctional Center Medium.*

Narcotics Anonymous: Staff supervised, volunteer facilitated discussion/support/fellowship group that focuses on the twelve steps of narcotics anonymous and providing community information as appropriate. *This program is available at Bridgewater State Hospital, Boston Pre-Release Center, Bay State Correctional Center, Massachusetts Treatment Center, Northeastern Correctional Center, North Central Correctional Center Medium and Minimum, Old Colony Correctional Center Medium, Pondville Correctional Center, MCI Plymouth, MCI Framingham, MCI Norfolk and MCI Cedar Junction, and Bridgewater State Hospital.*

National Education for Assistant Dog Services-Puppy Program: NEADS is a non-profit service dog organization established to provide Hearing, Service and Assistance Dogs for veterans, adults and children. For example: children on the autism spectrum; veterans or civilians who are deaf or use wheelchairs or whose activities are limited by their disability. These Service Dogs become extensions of their owners and bring freedom, independence, increased mobility and relief from social isolation to their partners. This is an 18-month program designed to utilize inmate handlers to teach dogs basic obedience and other skills needed to prepare them for future “careers” as Service Dogs assisting people who are physically disabled. Following their training with the inmates, the dogs will then learn the more advanced Service Dog skills at NEADS’ National Assistance Dog Training Campus in Princeton, MA. *This program is available at Boston Pre Release Center, MCI- Concord, MCI Framingham, Northeastern Correctional Center, MCI Norfolk, MCI Plymouth, MCI Shirley and Pondville Correctional Center.*

Newsletter/Journalism Course: Vendor facilitated program that teaches fundamental writing, formatting and publication skills. A newsletter, written and printed by inmates, is published four times per year. *This program is available at the Massachusetts Treatment Center.*

Non Violent Communication: This is a 12 week program that addresses the violence in our culture and fosters community safety by teaching communication and life skills. The basic Nonviolent Communication program’s aim is to teach individuals how to relate with others out of awareness of feelings and needs rather than judgments, labels, punishment, guilt, and shame. *This program is available at MCI Concord.*

Novel in a Month: This volunteer facilitated program uses the healing power of creative expression. The course emphasizes goal-setting and problem solving as methods for completing substantial tasks which otherwise might seem insurmountable. *This program is available at South Middlesex Correctional Center. MCI Norfolk and Pondville Correctional Center.*

Nutrition Series: Program at NECC consisting of three workshops: Weight Loss without Starvation; Diet for a Healthy Heart; and Power Eating – Building Muscle Not Fat. *This program is available at Northeastern Correctional Center.*

Nutrition and Health Program: This program consists of four sessions and serves as an introduction to diet and nutrition. Upon completion, the participants should have a good foundational knowledge of what to consume to maintain optimal nutrition. *This program is available at Northeastern Correctional Center.*

Occupational Therapy Life Skills Groups II and I: Staff facilitated program designed to provide services to patients who require assistance in learning the skills necessary to lead independent lives. *This program is geared toward the special needs patient population at Bridgewater State Hospital.*

Opioid Treatment Program: A program for women who are pregnant and on methadone. Health issues, relapse prevention, overdose prevention, healthy relationships and child development are discussed. *This program is available at MCI Framingham.*

Open Art Studio Workshop: Volunteer facilitated program that involves multi-step art projects intended to develop patience and suppress detrimental impulsivity. *This program is available at MCI-Framingham.*

Parenting Support : Vendor facilitated group that provides a continuum of parenting classes reinforcing the skills developed in Parenting Education. This group encourages women to take a leadership role in continuing to address the multifaceted aspects surrounding parenting. This process is aided by the support of the group facilitator. *This program is available at MCI Framingham.*

Parenting/Family Services: Volunteers and staff provide programs, which range from skill building, basic education, and reintegration information to support groups. *This program is available at MCI Framingham, MCI Norfolk, MCI Shirley, South Middlesex Correctional Center and Souza Baranowski Correctional Center.*

Parents Anonymous/Parenting Support: Volunteer facilitated child abuse prevention self-help program offered weekly. *This program is available at MCI Framingham.*

Partners in Parenting: In conjunction with the Sesame Street program, this curriculum is aimed at teaching mothers the skills needed to develop positive, engaging relationships with their children. *This program is available at South Middlesex Correctional Center.*

Parenting on the Inside: Inmates are challenged to consider new ways of relating to and interacting with their children by discussing their strengths and barriers. *This program is available at MCI Concord.*

Passion to Profit: Creating Your Own Business

Entrepreneurship workshop course introduces students to the fundamentals of small business. Students will be led through the process of writing their own business plan and developing negotiating, networking, self-preservation and interview skills. *This program is available at the Pondville Correctional Center.*

Pastoral Visitors: The objective is to provide individuals with visitors from the community in order to enrich the quality of their lives. *This program is available at Bridgewater State hospital.*

Path of Freedom: This program is a mindfulness-based, cognitive-behavioral and integral approach to self-transformation and personal development. *This program is available at MCI Concord, North Central Correctional Institution, South Middlesex Correctional Center and Souza Baranowski Correctional Center.*

Personal Finance: This program is designed to give offenders a basic understanding of credit, budgets, cash flow requirements, how to track spending and preparation for tax returns. The goal is to increase coping skills with regards to money, family finances and personal finances. *This program is available at MCI-Plymouth.*

Phoenix Rising: Inspired by Project Youth, the focus of this program is prevention, rehabilitation and restoration. *This program is available at MCI Framingham.*

Poetry Group: A former Boston University professor coordinates this group. Every other month, artists from the community meet with inmates to review and critique their poems. *This program is available at Bay State Correctional Center and MCI Norfolk.*

Poetry, Reading and Writing Workshop: Staff facilitated program that aims to effect positive behavioral change by improving communication skills and increasing emotional intelligence through the experiences of reading, writing, hearing and speaking poetry. *This program is available at Northeastern Correctional Center.*

Preparing for Release: Reentry Discussion: This program will be a topic specific discussion group offered to patients related to a variety of reentry issues. The program is designed to provide specific information on the following topics like: DMH Facilities, Parole, AA/NA Sponsor just to name a few. *This program is available at Bridgewater State Hospital.*

Project Good Dog: This program rehabilitates shelter dogs and provides the training so that the dogs can then be placed in a loving home. The inmates gain a sense of purpose through this training. *This program is available at NCCI and the Massachusetts Alcohol and Substance Abuse Center.*

Project Youth / Project Wake Up: Staff supervised program in which inmates discuss with high school students their personal experiences and consequences that resulted in incarceration. *This program is available at MCI Norfolk, Old Colony Correctional Center Medium, North Central Correctional Institution, MCI Shirley Medium,*

MCI Concord, MCI Cedar Junction.

Public Speaking: This program will offer public speaking training to those who wish to develop their self-confidence and leadership potential by delivering short speeches on a range of topics and by offering constructive, friendly feedback to their colleagues. *This program is available at South Middlesex Correctional Center.*

Rational Recovery Program: Volunteer facilitated substance abuse program based on the premise that 12 Step programming fosters dependency. *This program is available at MCI Concord and Old Colony Correctional Center Medium.*

Rational Thinking: Volunteer facilitated self awareness program targeted towards building self esteem. This program includes exercises for increasing self control and lectures to promote the understanding of rational versus irrational behaviors. *This program is available at North Central Correctional Center Medium and Minimum.*

Read to Me Daddy Program: A staff and volunteer facilitated program where the male offenders are assisted in selecting a book that is age appropriate and speaks to their child's interest level. The male offender is then filmed while he reads the book and when the video is finished both the book and video tape are mailed to the child. *This program is available at MCI Concord and Northeastern Correctional Center and North Central Correctional Center and Old Colony Correctional Center.*

Read to Me Mommy Program: Chaplain facilitated program where the female offenders are assisted in selecting a book that is age appropriate and speaks to their child's interest level. The female offender is then filmed while she reads the book and when the video is finished both the book and video tape are mailed to the child. *This program is available at MCI Framingham and South Middlesex Correctional Center.*

Reclaiming Reality: This program is a volunteer facilitated, non-residential substance abuse program. The program is eight weeks in length and follows a detailed lesson plan addressing addictive behavior. *This program is available at MCI-Cedar Junction, Massachusetts Alcohol and Substance Abuse Center, MCI Concord, South Middlesex Correctional Center and Pondville Correctional Center.*

Recreational Guitar Program: This is a leisure program designed to creatively make use of leisure time. Music is used as a positive vehicle to reduce stress and promote a positive climate. *This program is available at Northeastern Correctional Center.*

Reentry Assistance Program (RAP): Staff/volunteer facilitated program to offer support services to offenders releasing within six months to the Concord/Metro Northwest Area. *This program is available at Northeastern Correctional Center.*

Reentry Seminar Series: This weekly forum explores critical issues that impact an inmates criminal behavior. The program teaches effective communication skills, conflict resolution skills and how to develop positive friendships. *This program is available at Souza Baranowski Correctional Center.*

Relaxation and Peace for Daily Living: This class encourages increased self awareness and accountability. The course emphasizes learning to be accountable for one's thoughts, feelings and behavior. *This program is available at Souza Baranowski correctional Center.*

Re-motivation Program: Implemented and run by the Rehabilitation Services Department, this motivational group is designed to engage patients who are presently not attending any treatment groups. *This program is geared toward the special needs patient population at Bridgewater State Hospital.*

Responsibility Group: This group is offered to committed patients who repeatedly deny responsibility or externalize behaviors related to their criminal offense. Patients must be able to tolerate direct feedback in a group setting. This group focuses on the patient's behavior and how that may have lead to his criminal behavior. *This program is geared toward the special needs patient population at Bridgewater State Hospital.*

Restorative Justice: This is a reading program designed to introduce the participant to what it means to be accountable, responsible and to make amends. *This program is available at MCI Framingham and MCI Cedar Junction and South Middlesex Correctional Center.*

Security Threat Group Derailment: This program employs an interdiction strategy that focuses on impulsivity, consequential thinking, interpersonal communication and conflict resolution as alternatives to aggression. *This*

program is available at Souza-Baranowski Correctional Center.

Self Help/Twelve Step Programs: Volunteer facilitated substance abuse support groups based on abstinence. Self Help/Twelve-step programming includes Alcoholics Anonymous, Narcotics Anonymous and Al Anon. Programming is available in both Spanish and English. *This program is available at most facilities.*

Seventy x Seven: Chaplain facilitated program that focuses on forgiveness, examining loss, coping and creating hope. *This program is available at Bridgewater State Hospital and Massachusetts Alcohol and Substance Abuse Center.*

SMART Recovery: This is a science based, abstinence-oriented program. This program is based on cognitive behavioral therapy and lifestyle balance. *This is available at MCI Framingham.*

Speaking Without Fear: A staff facilitated program which is designed to enhance an inmate's ability to communicate more effectively. This is a six week program and is a pre-requisite to the Toastmasters' Program. *This program is available at Old Colony Correctional Center Medium.*

Spiritual Formation in Segregation: This program aims to replace criminal beliefs with spiritual values. The goal is provide the inmate with self discipline and a greater understanding of how spirituality and self reflection can strengthen can exert a positive influence on the inmate's thinking and choices. *This program is available at MCI Cedar Junction.*

Substance Abuse Video Program: Volunteer facilitated program consisting of inmates viewing substance abuse treatment videos followed up by a discussion period on substance abuse issues. *This program is available at MCI Shirley – Minimum Unit.*

Teacher Assistance Program: Through the coordination of the Catholic Chaplain at MCI Framingham and South Middlesex Correctional Center, the volunteers will reach out to 8-12 primary school teachers about classroom needs, bulletin boards, posters, classroom decorations and other projects similar in nature. This program will benefit various communities by providing school districts and teachers with a resource to help with the classroom aids. *This program is available at MCI Framingham and South Middlesex Correctional Center.*

The Bridge Program: Previously known as SEALS. A vendor supervised program that provides patients with an opportunity to learn basic fundamental work skills and at the same time contribute to the Department's goals for community reparation. *This program is geared toward the special needs patient population at Bridgewater State Hospital.*

The Fatherhood Project: This volunteer facilitated program takes an educational and clinical approach to improve specific skills needed to develop positive, engaging relationships between incarcerated fathers and their children. *This program is available at MCI-Concord, MCI Shirley.*

The Lazarus Project: This reentry initiative brings ex-offenders back to the facility to share with inmates how they were able to successfully re-enter the community. *This program is available at South Middlesex Correctional Center.*

The Path to Freedom: This program is a mindful-based, cognitive-behavioral approach to self transformation and personal development. *This program is available at MCI Norfolk, Northeastern C.C., and MCI Shirley Medium.*

Therapeutic Art Studio: Volunteer facilitated program that involves multi-step art projects. This program is designed to build self-esteem, improve coping skills, decision making skills, patience and suppression of detrimental impulsivity. *This program is available at South Middlesex Correctional Center.*

There Is A Way : This ten week program will address areas of risk prevention for women who experienced sex trafficking and sexual violence previous the incarceration. *This program is available to South Middlesex Correctional center.*

Thirty (33) Days to Glory: The program is a volunteer facilitated, do-it-yourself retreat by means of Marian consecration through which participants will be invited to give themselves to Mary to be formed into the image of her son, Jesus. *The program is available at MCI Shirley Medium.*

Toastmasters: Public speaking program that enables inmates to develop more effective communication skills. Through a series of presentations, inmates learn to express thoughts in a clear and non-threatening manner. Toastmasters are an internationally recognized organization. *This program is available at MCI Cedar Junction, MCI Concord, MCI Framingham, MCI Norfolk, MCI Plymouth, MCI Shirley Medium and Minimum, Old Colony Correctional Center Medium and Souza Baranowski Correctional Center.*

Transforming Anger with Non Violent Communication: This 12 week program addresses violence in our culture and fosters community safety by teaching communication and life skills. *This program is available at Northeastern Correctional Center.*

Transitional Housing Program: On-site trailer located at the MCI Framingham used for visits between female inmates and their children. The inmates are required to successfully complete the Parenting Education Program before being eligible for this program. In addition, there are various resources and support services that assist the offender and their children while participating in the Visiting Trailer Program. *This program is available at MCI Framingham.*

Trauma Informed Mind Body Program: A structured curriculum that leaves students with tools to address their habituated patterns and symptoms that lead to recidivism, relapse and the entrapment in the cycle of trauma. *This program is available at MCI Framingham.*

Turning the Pages: Volunteer facilitated program. This program relies on fostering and encouraging the participants' responses to literature. The primary reading will utilize the National Public Radio series, "This I Believe". By reading and discussing the essays and other literature other have written to disclose and analyze their deepest beliefs and core ideas, we are able to explore each individual's identity and encourage the internal excavation of their beliefs and decision making structures. *The program is available at South Middlesex Correctional Center.*

Tutoring for Men: Volunteer facilitated program. *This program is available at MCI Concord.*

Venturing Out-Entrepreneurship- 101: This course is designed to introduce inmates to the fundamentals of small business. This course also devotes time for interpersonal skill building, networking, marketing oneself and interviewing skills. *This program is available at Northeastern Correctional Center and South Middlesex Correctional Center.*

Veterans Support Group: This is a peer support group to build a community of men who share the experience of being veterans. *This is available at MCI Concord.*

Victim Impact Education: This program is designed to enhance the inmate's capacity to understand his impact on others. The goal is to expand a person's awareness of the ways they hurt themselves and others through crime and violent behavior. *This program is available at MCI Concord.*

Victim Offender Education group: (VOEG) This restorative justice program provides opportunities for the inmates to internalize accountability, responsibility and learn empathy towards their victims and the community. *This program is available at MCI Norfolk, MCI Concord, MCI Framingham and South Middlesex.*

Victim Offender Education Group Restorative Justice Book Discussion: This is an eight week program to aid offenders to develop more compassion and empathy for themselves and others. Its mission is to protect society by increasing awareness, accountability, and social responsibility. *This program is available at MCI Norfolk, MCI Concord, MCI Framingham and South Middlesex.*

VOSH/NECO: Eyeglasses recycling program. Staff coordinated program in which inmates repair donated eyeglasses to be repackaged and sent to developing countries where members of VOSH/NECO will examine patients and distribute the eyeglasses. Volunteer Optometry Services to Humanity /New England Council Optometrists (VOSH/NECO) is a non-profit organization dedicated to the preservation of human sight, mainly in developing countries where there is no welfare. *This program is available at MCI Norfolk.*

Wellness: Yoga/Body Fitness&Stress Relief: This program introduces breathing techniques, body exercises and

physical therapy aimed to reduce tension and improve the climate of the institution. *This program is available at MCI Framingham.*

Writing For Results: Students learn the basic steps to writing clean, compelling prose for job related or personal growth. *This program is available at MCI Concord, MCI Framingham, Souza Baranowski Correctional Center.*

Writing for the Soul: Staff Facilitated program designed to improve writing skills and encourage interest in reading while strengthening self confidence and employability. *This program is available at Bridgewater State Hospital, Boston Pre Release Center and the Massachusetts Alcohol and Substance Abuse Center.*

Zen Buddhism: This weekly program is modeled on the traditional forms as taught in the Kwan Um School of Zen. Included is sitting, walking and chanting meditation. *This program is available at MCI Concord.*

SECURE FACILITIES
MCI CEDAR JUNCTION

Departmental Services and Programs:

High Risk Offender Program
Intro to Treatment
Intro to Twelve Steps
Recreation Services
Reentry and Employment Readiness Workshop
Religious Services
Substance Abuse Education
Volunteer Services

Correctional Industries:

Cedar Junction is home to the License Plate Shop where offenders produce the license plate requirements set forth by the Registry of Motor Vehicles.

Academic Education Programs:

Adult Secondary Education I (formerly GED)
Adult Secondary Education II
ESL I
ESL II
ESL III
Pre-ASE

Supplemental Academic Programming

Title I
Special Education
Education in Specialized Housing Units

Technology Programming

Computer Skills I

Vocational Education Program:

OSHA
ServSafe

Institutional Programs:

Able Minds
Alcoholics Anonymous
Alternatives to Violence
Anger Management
Cognitive Skills
Criminal Thinking
Greenhouse/Garden Program
Introduction to Motivational Enhancement
Narcotics Anonymous

Project Youth
Reclaiming Reality
Restorative Justice Reading Group
Substance Abuse Education
Spiritual Formation in Segregation
Toastmaster
Violence Reduction

MCI CONCORD

Departmental Services and Programs:

Correctional Recovery Academy
Correctional Recovery Academy Graduate Support Program
Criminal Thinking
Medication Assisted Treatment Reentry Initiative
Recreation Services
Reentry and Employment Readiness Workshop
Religious Services
Violence Reduction
Volunteer Services

Academic Education Programs:

ESL I
ESL II
ESL III
ASE
Pre-ASE (formerly Pre-GED)

Supplemental Academic Programming

Title I
Special Education

Technology Programs

Computer Skills I
Computer Skills II (under development)
CISCO/ IT Essentials

Vocational Education Programs:

Barber School
Building Trades
OSHA
ServSafe

Institutional Programs:

Alcoholics Anonymous
Basic Computer Skills
Basic Literacy
Beacon Study Group
Book Discussion Groups
Book Giveaway for Children
Chess Club
Cognitive Skills Workshops
Creative Writing

Entrepreneurship Group
Gardening/Landscaping
Health Awareness (HIV/AIDS Awareness)
Math Skills for HS Grads and GED Holders
Money Smart
National Education for Assistant Dog Services-Puppy Program (NEADS)
Non Violent Communication
Path of Freedom
Read To Me Daddy
Self/Help Big Book Program and Twelve Step Programs
Toastmasters, Inc. Gavel Club
Tutoring for Men
Victim Impact Education
VOEG
Victim Offender Education Group Restorative Justice Book Discussion
Writing For Results
Zen Buddhism

MCI FRAMINGHAM

Departmental Services and Programs:

Building Positive Connections
Family Preservation Programming and Services
First Step Program
Healthy Living Community
Life in Recovery
Medication Assisted Treatment Reentry Initiative
Opiate Treatment Program
Parenting Inside out
Parenting Support Group
Recreation Services
Religious Services
Sex Offender Treatment Program (Assessment Therapy, Psycho-Ed Classes and Supplemental Groups)
Volunteer Services

Correctional Industries:

This operation currently manufactures United States, Commonwealth of Massachusetts, POW/MIA, and Custom Flags, Laundry Bags and Belt Pouches. The offenders learn valuable skills that are related to the various employment opportunities in the sewing industry within the state. Our Embroidery Shop can embroider caps, jackets, tee shirts and many other items.

Academic Education Programs:

Adult Basic Education I
Adult Basic Education II
Boston University
Adult Secondary Education (formerly GED)
Boston University Program
ESL I
ESL II
ESL III
Inside Out
Post-Secondary Education
Pre-ASE (formerly Pre-GED)
Tutor Training Program I
Tutor Training Program II

Supplemental Academic Programming

Title I

Technology Program:

Computer Skills I
Computer Skills II

Vocational Education Program:

Cosmetology Program
Cosmetology Exam Preparation
Culinary Arts Foundations I
Culinary Arts Foundations II
Horticulture
ServSafe

Institutional Programs:

Able Minds
A Book from Mom Program
Alcoholics Anonymous
American Vet Dogs
A Place for Mom-Empowering Parents
Boston Bar Association Lecture Program
Bridging the Gap
Career Skills
Child Custody Workshop
Cognitive Skills
DCF Visit Coordination
Financial Literacy
Fully Alive Program
Greenhouse/Garden Program
Health Awareness (HIV/AIDS Education)
Inmate Companion/Environmental Cleaning
Kid's Corner
Law Clerk Training
Long termers' Group
Memoir Workshop
Money Smart
Narcotics Anonymous
National Education for Assistant Dog Services-Puppy Program
New Horizons
Peer Educator Program (HIV/AIDS Peer Education)
Peer Support Program
Phoenix Rising (Project Youth)
Read to Me Mommy
Residential Treatment Unit
Restorative Justice
Self/Help Twelve Step Programs
Start Smart
VOEG- Victim Offender Education Group
Victim Offender Education Group Restorative Justice Book Discussion
Wellness: Yoga/Body Fitness & Stress Relief
Writing for Results

MCI NORFOLK

Departmental Services and Programs:

Correctional Recovery Academy
Correctional Recovery Academy Graduate Support Program
Criminal Thinking
Medication Assisted Treatment Reentry Initiative
Recreation Services
Reentry and Employment Readiness Workshop
Religious Services
Sex Offender Treatment Program (Assessment and Treatment Introduction and SOTP Maintenance)
Violence Reduction
Volunteer Services

Correctional Industries:

Our largest operation, Norfolk has offenders working in a wide range of manufacturing settings. This operation houses a Clothing Shop where fabric is cut from rolls and sewn to create garments used in a number of areas throughout the Commonwealth; our Mattress Shop produces a variety of mattresses for use in a number of environments; the Janitorial shop has a complete line of cleaning products available; the Metal operation is able to supply custom fabricated metal cell furniture to provided specifications; the Upholstery Shop produces a number of quality upholstered office chairs, and can re-upholster sofas, chairs, and other furniture; a Binder Shop which produces 3 ring vinyl binders in a number of sizes. Lastly, a Furniture Assembly Shop assembles various furniture items from a number of outstanding furniture manufacturers.

Academic Education Programs:

Adult Basic Education I
Adult Basic Education II
Adult Secondary Education (formerly GED)
Boston University Program
ESL I
ESL II
ESL III
Post-Secondary Education
Pre-ASE (formerly Pre-GED)
Tutor Training Program

Supplemental Academic Programming

Special Education
Title I

Technology Programming

Computer Skills I

IT Essentials

Vocational Education Programs:

Barber Training
Culinary Arts Foundations I
Culinary Arts Foundations II
OSHA
ServSafe
Welding

Institutional Programs:

Able Minds
Alcoholics Anonymous
Alternatives to Violence
American Veterans in Prison
Chess Club
Cognitive Skills
Countdown to Freedom
Cultural Groups
Emotional Awareness / Houses of Healing Program
End Violence
Health Awareness (HIV/AIDS Education)
Jericho Circle
Leadership and Transformational Thinking
Lifer's Group
Massachusetts Community Outreach Program
Money Smart
Music Theory Program
Narcotics Anonymous
National Education for Assistant Dog Services-Puppy Program
Novel in a Month
Nuestra Familia
Parenting/Family Services
Pathway to Freedom
Peer Educator (HIV/AIDS Education)
Poetry Group
Project Youth Program
Read to me Daddy
Restorative Justice
Second Thoughts
Self/Help Twelve Step Programs
The Path of Freedom
Toastmasters
Victim Offender Education Group-VOEG
Victim Offender Education group Restorative Justice Book Discussion
VOSH/NEC

MCI SHIRLEY

Departmental Services and Programs:

Correctional Recovery Academy
Correctional Recovery Academy Graduate Support Program
Criminal Thinking
Graduate Maintenance Program
Medication Assisted Treatment Reentry Initiative
Recreation Services
Reentry and Employment Readiness Workshop
Religious Services
Violence Reduction
Volunteer Services

Correctional Industries:

This site houses a sewing operation that manufactures sheets, towels, and socks. The offenders learn valuable skills that are related to the various employment opportunities in the sewing industry within the state.

Academic Education Programs:

Adult Basic Education II
Adult Secondary Education (formerly GED)
Pre-ASE
ESL 1-Beginner
ESL 2-Intermediate
ESL 3-Advanced

Supplemental Academic Programming

Title I

Technology Programming

Computer Skills I

Vocational Education Programs:

Barber Training
Culinary Arts Foundations I
Culinary Arts Foundations II
Cisco- I.T. Essentials

Institutional Programs:

African American Coalition
Alcoholics Anonymous

ALPHA

Alternatives to Violence
Alternatives to Violence Support Group
American Veterans in Prison (AVIP)
Art Program
BEACON
Book Discussion
Buddhist group
Cognitive Skills Workshops (7)
Companion Program/Environmental Cleaning
Health Awareness (HIV/AIDS Education)

MCI Shirley –continued

Hispanic Heritage Group
Long-termers Group
Massachusetts Community Outreach Initiative
Menswork
Music Theory
Peer Educator (HIV/AIDS Education)
Project Youth
Recreation Board Games
Runners Club
Second Degree Lifers Group
Self Help/Twelve Step Programs
The Most Excellent Way
The Path of Freedom
Thomas Morton Study Group
Toastmasters (also offered in Spanish)
Transformation Fitness
Writing From the Heart
33 Days to Glory

NORTH CENTRAL CORRECTIONAL INSTITUTION

Departmental Services and Programs:

Criminal Thinking
Recreation Services
Reentry and Employment Readiness Workshop
Religious Services
Sex Offender Treatment Program (Assessment and Treatment Introduction, Reintegration and Maintenance)
Violence Reduction
Volunteer Services

Correctional Industries:

The Optical shop is a full scale eyewear laboratory providing services to many providers throughout Massachusetts. The offenders currently working at this site grind, polish, and assemble eyeglasses for a number of customers. The industrial instructor's at NCCI-Gardner are facilitating the process of testing offenders working in the Optical Shop to gain a certification from the American Board of Optometry, a nationally recognized organization. The test is designed to reveal the competency in the optical field and their overall knowledge. The individual taking this exam will be provided a certification from the American Board of Opticianry (ABO). This in turn, will allow the offender to show qualifications and a work history to potential employers.

Academic Education Programs:

Adult Basic Education I
Adult Basic Education II
Adult Secondary Education (formerly GED)
ESL I
ESL II
ESL III
Pre-ASE (formerly Pre-GED)

Supplemental Academic Programming

Special Education

Technology Programming

Computer Skills I

Vocational Education Programs:

Building Trades
Culinary Arts Foundations I
Culinary Arts Foundations II
Horticulture
OSHA
ServSafe

Small Engine Repair
Welding

Institutional Programs:

AA Reentry Fellowship Program
Alternatives to Violence
AVP Writing Program
Alcoholics Anonymous
Greenhouse and/or Garden Program
Music Theory Program
Narcotics Anonymous
National Education for Assistant Dog Services-Puppy Program

North Central Correctional Institution-Continued

Path of Freedom
Project Youth (Project Wake up)
Rational Thinking
Read to me Daddy
The Good Dog Program

OLD COLONY CORRECTIONAL CENTER

Departmental Services and Programs:

Correctional Recovery Academy
Correctional Recovery Academy Graduate Support Program
Criminal Thinking Program
Graduate Maintenance Program
Health Awareness (HIV/AIDS Education)
Medication Assisted Treatment Reentry Initiative
Peer Education (HIV/AIDS Education)
Recreation Services
Reentry and Employment Readiness Workshop
Religious Services
Sex Offender Treatment Program (Assessment and Treatment Prep, SHU Unit Only)
Substance Abuse Education
Thinking For a Change
Violence Reduction Program
Volunteer Services

Correctional Industries:

Printing is the trade being taught at our full scale, state-of-the-art, Printing Plant. Offenders working in the print shop are able to use the latest technology to produce a quality product and therefore also gain valuable skills which are easily transferable to private industry. Products offered vary from letterhead to continuous forms, to City and Town Reports. There is also a Validation Shop that produces Registry of Motor Vehicle stickers and decals.

Academic Education Programs:

Adult Basic Education I
Adult Basic Education II
Adult Secondary Education (formerly GED)
ESL I
ESL II
ESL III
Inside Out
Post-Secondary Education
Pre-ASE (formerly Pre-GED)
Special Education
Tutor Training Program 1
Tutor training Program 2

Technology Programming

Computer Skills I

Supplemental Academic Programming

Education in Specialized Housing Units
Special Education
Transition Skills (non HSE Track)

Vocational Education Programs:

Culinary Arts Foundations I
Culinary Arts Foundations II
OSHA
ServSafe

Institutional Programs:

African Heritage Coalition
Alcoholics Anonymous (also offered in Spanish)
Alternatives to Violence Program
American Veterans in Prison
American Vet Dogs
Big Book
Chess Club
Chess Club
City Missions
Health Awareness (HIV/AIDS Education)
Lifer's Group
Music Theory Program
Narcotics Anonymous (also offered in Spanish)
Project Youth
Rational Recovery Program
Sampson Art Program
Sampson Book Club
Self/Help Twelve Step Programs
Spanish United Project
Speaking Without Fear
Read to Me Father
Toastmasters

SOUZA BARANOWSKI CORRECTIONAL CENTER

Departmental Services and Programs:

Bridging Treatment (Co-Occurring Disorders)
Core Skills
Criminal Thinking
High Risk Offender Graduate Support Program
Motivational Enhancement
Moving Forward – Stages of Change
Reentry and Employment Readiness Workshop
Religious Services
Substance Abuse Education
Violence Reduction
Volunteer Services

Academic Education Programs:

Adult Basic Education I
Adult Basic Education II
Adult Secondary Education (formerly GED)
ESL I
ESL II
ESL III
Pre ASE (formerly Pre-GED)

Specialized Academic Programming

Education in Specialized Housing Units
Special Education
Title I

Technology Programming

Computer Skills I

Vocational Education Programs:

Barber Training
Culinary Arts Foundations I
Culinary Arts Foundations II
OSHA
ServSafe

Institutional Programs:

Advanced Writing for Results
Alternatives to Violence
Beacon Program - Behavior, Emotions and Changing Oneself
Book Discussion Group

Cognitive Skills
Emotional Awareness and Healing
Health Awareness (HIV/AIDS Education)
Parenting Group
Path of Freedom
Reentry Seminar Series
Relaxation and Peace for Daily Living
Security Threat Group Derailment
Self/Help Twelve Step Programs
Self-Learning Initiative
Toastmasters
Violence Reduction Initiative
Writing For Results

COMMUNITY CORRECTIONS

BOSTON PRE-RELEASE CENTER

Departmental Services and Programs:

Graduate Maintenance Program
Medication Assisted Treatment Reentry Initiative
Reentry and Employment Readiness Workshop
Recreation Services
Religious Services
Volunteer Services

Academic Education Programs:

Inside Out

Vocational Programming

OSHA
ServSafe

Supplemental Academic Programming

Special Education

Institutional Programs:

AAWOL
Alcoholics Anonymous (also available in Spanish)
Basic Computer Literacy
Boston University Book Club
Cognitive Skills Workshop
Doing The Right thing
Emerald Gardening Program
Father Heart Parenting Program
Fully Alive
Medication Assisted Treatment Reentry Initiative
Narcotics Anonymous
Span-Reentry
Writing For the Soul

Community Programs: (Level two inmates only)

Educational Release

Office of Community Corrections
Step Down Community Assistance under Community Program

MCI PLYMOUTH

Departmental Services and Programs:

Recreation Services
Reentry and Employment Readiness Workshop
Religious Services
Thinking for a Change
Violence Reduction
Volunteer Services

Academic Education Programs:

Adult Basic Education I
Adult Basic Education II
Boston University
Adult Secondary Education (formerly GED)
ESL I
ESL II
ESL III
Pre-ASE (formerly Pre-GED)

Supplemental Academic Programming

Special Education

Technology Programming

Computer Skills I

Vocational Education Programs:

OSHA
ServSafe
Small Engine Repair

Institutional Programs:

Alcoholics Anonymous
Cognitive Skills
Family Reunification
Money Smart
Narcotics Anonymous
National Education for Assistant Dog Services-Puppy Program
Self Help/12 Steps Program

MCI SHIRLEY, MINIMUM

Departmental Services and Programs:

Correctional Recovery Academy
Correctional Recovery Academy Graduate Support Program
Graduate Maintenance Program
Medication Assisted Treatment Reentry Initiative
Recreation Services
Reentry and Employment Readiness Workshop
Religious Services
Volunteer Services

Technology Programming

Computer Skills I
Computers for Schools

Vocation Education Programs:

Horticulture
Wheels for the World

Institutional Programs:

Alcoholics Anonymous
Health Awareness (HIV/AIDS Education)
Toastmasters

NORTH CENTRAL CORRECTIONAL INSTITUTION, MINIMUM UNIT

Departmental Services and Programs:

Recreation Services
Reentry and Employment Readiness Workshop
Religious Services
Volunteer Services

Academic Education Program:

Adult Secondary Education (ASE)
ESL I
ESL II
ESL III
Pre-ASE

Technology Programming

Computer Skills I

Vocation Education Program:

Barber Program
Building Trades
Culinary Arts Foundations I
Culinary Arts Foundations II
Horticulture
OSHA
ServSafe
Small Engine Repair
Welding

Institutional Programs:

Alcoholics Anonymous
Greenhouse/Garden Program

Leadership and Transformational Thinking
Narcotics Anonymous
Rational Thinking

NORTHEASTERN CORRECTIONAL CENTER

Departmental Services and Programs:

Graduate Maintenance Program
Health Awareness (HIV/AIDS Education)
Medication Assisted Treatment Reentry Initiative
Peer Education (HIV/AIDS Peer Education)
Recreation Services
Reentry and Employment Readiness Workshop
Religious Services
Volunteer Services

Academic Education Programs:

Adult Basic Education I
Adult Basic Education II
ESL I
ESL II
ESL III

Technology Programming

Computer Skills I

Vocational Education Programs:

Auto Body Repair
Culinary Arts Foundations I
Culinary Arts Foundations II
ServSafe

Institutional Programs:

Alcoholics Anonymous
Alcoholics Anonymous Big Book
Alcoholics Anonymous Open Discussion
AA Reentry Fellowship Program
Alternatives to Violence
Art Program
Beacon Program - Behavior, Emotions and Changing Oneself
Chess
Christian Action Fellowship
Concord Public Library Program
Entrepreneurship 101
Family Day Program

Fatherheart
Father's Parenting Group
Garden/Greenhouse Program
GiftEd
Job Search
Kid's Korner
Massachusetts Community Outreach Initiative
Music Theory Program
Narcotics Anonymous
National Education for Assistant Dog Services-Puppy Program
Nutrition and Health Program
Preparing for Employment through I-Ching
Northeastern C.C. –continued
Read to Me Daddy
Recreational Guitar Program
Self/Help Twelve Step Programs
Transforming Anger with Non Violent Communication

OLD COLONY CORRECTIONAL CENTER, MINIMUM

Departmental Services and Programs:

Graduate Maintenance Program
Job Search Workshop
Medication Assisted Treatment Reentry Initiative
Recreation Services
Reentry and Employment Readiness Workshop
Religious Services
Thinking for a Change
Violence Reduction
Volunteer Services

Academic Education Programs:

Adult Basic Education I
Adult Basic Education II
Adult Secondary Education (formerly GED)
ESL I
ESL II
ESL III
Pre-ASE (formerly Pre-GED)
Tutor Training Program

Specialized Academic Programming

Special Education

Technology Programming

Computer Skills I

Vocation Education Program:

OSHA
ServSafe

Institutional Programs:

Beacon Program - Behavior, Emotions and Changing Oneself
Companion Program
Garden Program
Last Hope K9
Read To Me Father
Self/Help Twelve Step Programs
Substance Abuse Education

PONDVILLE CORRECTIONAL CENTER

Departmental Services and Programs:

Recreation Services
Reentry and Employment Readiness Workshop
Religious Services
Thinking for a Change
Violence Reduction
Volunteer Services

Correctional Industries:

MassCor's Central Office utilizes offenders from this facility to perform varied tasks such as clerical.

Academic Education Programs:

Adult Basic Education I
Adult Basic Education II
Adult Secondary Education (formerly GED)
ESL I
ESL II
Pre-ASE (formerly Pre-GED)

Specialized Academic Programming

Institutional Programs:

AA Big Book
Alcoholic Anonymous – A Way of Life (AWOL)
American Vet Dogs
Beacon Program - Behavior, Emotions and Changing Oneself
Cognitive Skills Programs
Countdown to Freedom Program
GED Tutoring Program
Leadership & Transformational Thinking
Men's Discussion Book
Milford Kitchen Culinary Arts
Money Smart Program
Narcotic Anonymous
Novel in a Month
Passion to Profit
Reclaiming Reality
Self/Help Twelve Step Programs
Violence Reduction

SOUTH MIDDLESEX CORRECTIONAL CENTER

Departmental Services and Programs:

Criminal Thinking
Family Preservation Programming and Services
Healthy Relationships for Women
Medication Assisted Treatment Reentry Initiative
Parenting Education Program
Recreation Services
Reentry and Employment Readiness Workshop
Reintegration Services
Religious Services
There is a Way
Turning the Pages
Volunteer Services
Reintegration Services

Academic Education Programs:

Adult Basic Education I
Adult Basic Education II
Adult Secondary Education (formerly GED)
Boston Univeristy
ESL I
ESL II
ESL III
Inside Out
Post-Secondary Education
Pre-ASE (formerly Pre-GED)
Tutor Training I

Specialized Academic Programming

Special Education

Vocational Education Programs:

Horticulture
OSHA
ServSafe

Institutional Programs:

Able Minds

Anger Management-SAMHSA
Beacon Program - Behavior, Emotions and Changing Oneself
Body/Mind Fitness
Book Club
Building Foundations
Cognitive Skills Workshops
Countdown to Freedom
Dance Leela
DCF Visit Coordination
Emotional Awareness and Houses of Healing
Family Reunification House Program
Fully Alive Program
Greenhouse/Garden
Leadership & Transformational Thinking
Money Smart
Novel in a Month
Parenting/Family Services
Path to Freedom
Read to Me Mommy Program
Reclaiming Reality
Restorative Justice Reading Group
Self/Help Twelve Step Programs
Therapeutic Art Studio
Toastmasters
Venturing Out-Entrepreneurship 101
VOEG- Victim Offender Education Group
Victim Offender Education Group Restorative Justice Book Discussion

SPECIALIZED FACILITIES

BRIDGEWATER STATE HOSPITAL

Departmental Services and Programs:

Health Awareness (HIV/AIDS Education)
Recreation Services
Reentry and Employment Readiness Workshop (Cadre Unit only)
Religious Services
Violence Reduction (Cadre Unit only)
Volunteer Services

Academic Education Programs:

Adult Basic Education I
Adult Basic Education II
Adult Secondary Education (formerly GED)
ESL I
ESL II
ESL III
Pre-ASE (formerly Pre –GED)

Vocation Education Program:

OSHA
ServSafe

Institutional Programs:

Advanced Communication Skills
Alcoholics Anonymous
Anger Management
Art Therapy
BSH Newsletter
Buddhist Meditation Retreat
Chess Club
Companion Program
Competency Restoration
Cognitive Skills
Countdown to Freedom for Men
Daily Living Skills Program
Day Treatment Program
Developmental Service Program

Dialectical Behavior Therapy - Skills Group Program
Family Issues Group
Inmate Worker Companions
Introduction to Horticulture
Library Educational Movie Series
Men's Health Series
Mindful Stretching and Breath work
Narcotics Anonymous
Occupational Therapy Life Skills Groups I and II
Older Men's Group
Pastoral Visitors
Preparing for Release: Reentry Discussion
Re-motivation Program

Bridgewater State Hospital-continued

Responsibility Group
Self/Help Twelve Step Programs
The Bridge Program
70 X 7 Program
Walking Club
Writing for the Soul
Younger Men's Group

MASSACHUSETTS TREATMENT CENTER

Departmental Services and Programs:

Recreation Services
Reentry and Employment Readiness Workshop
Religious Services
Sex Offender Treatment Program (Assessment and Treatment Prep, Non Residential Treatment, Residential Treatment & SOTP Maintenance Program)
Volunteer Services

Academic Education Programs:

Adult Basic Education I
Adult Basic Education II
Adult Secondary Education (formerly GED)
Computer Skills
ESL I
ESL II
ESL III
Pre-ASE (formerly Pre-GED)
Special Education
Tutor Training Program

Specialized Academic Programming

Special Education

Technology Programming

Computer Skills I

Vocational Education Program:

Building Trades Program
OSHA
ServSafe

Institutional Programs:

Alcoholics Anonymous
American Veteran in Prison
Art Program
Buddhist Precepts Ceremony
Garden Program

Music Theory Program
Narcotics Anonymous
Relapse Prevention
Self/Help Twelve Step Programs

MASSACHUSETTS ALCOHOL AND SUBSTANCE ABUSE CENTER

Overview

The Massachusetts Alcohol and Substance Abuse Center is a truly unique Department of Correction facility. The facility not only houses individuals who are civilly committed under MGL 123, Section 35, but also minimum security inmates as well.

For those men who are civilly committed, MASSACHUSETTS ALCOHOL AND SUBSTANCE ABUSE CENTER provides a detoxification and substance abuse program which consists of three phases:

1. Medically supervised detoxification
2. Mandatory counseling and programming
3. Individual discharge planning

Commitments participate in a comprehensive, multi-phase progression of classes in relapse prevention. In addition, case management services, twelve step programming, and assistance in after care planning are offered to provide each commitment with an individual discharge plan for community based treatment and support.

For those men who are sentenced, MASSACHUSETTS ALCOHOL AND SUBSTANCE ABUSE CENTER offers a variety of work, education, religious, and substance abuse programming.

Departmental Services:

Anger Management- MHM Staff
Health Awareness (HIV/AIDS Education)
Recreation Opportunities
Reentry and Employment Readiness Workshop
Religious Services
Responsible Fatherhood Program-MHM Staff
Thinking for a Change
Violence Reduction
Volunteer Programming
Work Opportunities

Academic Education Programs:

Adult Basic Education I
Adult Basic Education II
Adult Secondary Education (formerly GED)
ESL I
ESL II
ESL III
Pre-ASE (formerly Pre-GED)

Supplemental Academic Programming

Special Education

Vocation Education Programs:

OSHA

Serve Safe

Institutional Programs:

Able Minds

Alcoholics Anonymous

Basic Computer Literacy

Connecting the Dots

Countdown to Freedom

Massachusetts Alcohol and Substance Abuse Center-continued

Family and Friends Education and Resource Program

Gardening and Landscaping

Narcotics Anonymous

Peer Educator

Project Good Dog

Reclaiming Reality (Anger Management)

Second Chance

Writing for the Souls

Topics in Recovery

Tutor Training

Twelve Steps

70 X 7 Program

Writing for the Soul