

# GMSS REPORTER

## GREEN MOUNTAIN SUPPORT SERVICES QUARTERLY NEWSLETTER

October 2025 (4<sup>th</sup> Quarter newsletter)



### Halloween Party

**A special participant celebration!**

Join us for trick-or-treating, wand making, dancing, bingo, snacks and more!

**Thursday, October 30<sup>th</sup>, 2025  
1:00 – 3:30pm**

We encourage everyone to come dressed up as they'd like!  
(Please no weapons of any kind with costume)



### Board Meetings

Our GMSS Board meets on the fourth Thursday of the month at 5:30pm. A meeting link can be found on our website: [gmssvt.org](http://gmssvt.org)

A graphic showing several bingo cards and balls. One card is green with numbers 20, 71, 62, 3, 38. Another is orange with numbers 71, 3, 9, 14, 30, 4, 72, 19. A third is red with numbers 20, 71, 62, 3, 46, 38, 21, 14. A blue card is partially visible at the bottom right with numbers 4, 9, 14, 30, 29, 11, 54, 23, 3.

## Bingo 2025

~~August 6th~~  
~~August 20th~~  
~~September 3rd~~  
~~September 17th~~  
~~October 1st~~  
~~October 15th~~  
October 29th  
November 12th  
November 26th  
December 10th  
December 19th

**From 9:30-10:45 A.M.**  
At Green Mountain Support Services

### Painting with Andrea



**Wednesday, November 5<sup>th</sup> 9– 11am**  
*All supplies provided*

# GMSS REPORTER



**ELIZABETH  
WALTERS**  
EXECUTIVE  
DIRECTOR

Welcome to fall, all –

We crossed an important milestone when conflict-free case management and payment reform both went live on October 1 for those in our Developmental Services and Brain Injury programs.

These changes mark the most significant change in Developmental Services since the closing of the Brandon Training School more than thirty years ago. Some of the resulting changes – such as the addition of a new case manager to one's life - are very visible and real to those we support. Many more of the changes – new state policies, changed funding processes, changed procedures for how we document our work - are happening behind the scenes. It's a very busy time as we build new workflows and adapt to the changed guidelines, but our aim is to keep all the behind the scenes work there, behind the scenes, as we want those we support to have the smoothest possible experience. The transition to conflict-free case management for those in our Adult Family Care program is now also underway. Meetings to introduce new case managers are beginning now and those transitions will be taking place by the end of the year.

Some of you have had questions about what the federal government's profound policy changes and budget cuts, and now full shut-down, might mean for people receiving services. GMSS sustained its first direct hit last month. Cuts to the Substance Abuse and Mental Health Services Administration (SAMHSA) took away funding that was to

pay for the Mental Health First Aid training we just offered. The agency absorbed that cost because we believe in the training and didn't want those who had signed up to miss the opportunity. To date, the indirect hits have been both more plentiful and more noticeable. Longer wait times to reach Social Security are one example. If we learn of changes that will affect those receiving services, we will share that right away.

Thank you to those of you who came to September's Tropical Party. Those opportunities to slow down and be together are both joyful and important to our sense of community. Please join us if you can for our next event, our Halloween Party on Thursday, October 30<sup>th</sup> from 1:00-3:30pm. Costumes are encouraged, and all are welcome! October marks our annual service coordination appreciation event and I hope you'll take a moment to thank your service coordinator for what they do. As always, please reach out if there is something you'd like to ask about or discuss.



*Elizabeth*





## New Crisis Management Policy and Procedures

<b>Hellen Bard</b> 802-851-7075	Supported Employment Coordinator
<b>Amy Gillilan</b> 802-851-7065	Operations Manager
<b>Beth Hammond</b> 802-851-7048	Operation Director
<b>Jennifer Hanley</b> 802-851-7068	Human Resources Generalist
<b>Andrea Mayo</b> 802-851-7041	Office Manager

## SLPs & DSPs

**If you haven't picked up your GMSS First Aid kit,  
please swing by our front office!**

A pie chart showing the distribution of responses to the statement 'The current situation is a crisis for the world'. The chart is divided into three segments: 'Strongly agree' (green, approximately 25%), 'Disagree' (light blue, approximately 15%), and 'Agree' (dark blue, approximately 60%).

Response	Percentage
Strongly agree	25%
Disagree	15%
Agree	60%



# GMSS REPORTER

## Celebrating our GMSS Team

### Welcome!

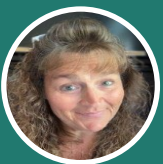
**Jacki Earle**

Direct Support Professional



**Amanda Jones**

Service Coordinator



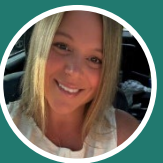
**Quinn Cayton**

Direct Support Professional



**Christa Barrett**

Specialized Care Team DSP



**Ben Carpenter**

Direct Support Professional



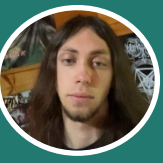
**Stacey Merriam**

Administrative Assistant



**Liam Mitchell**

Direct Support Professional



**Rebecca Morin**

Direct Support Professional



### GMSS Anniversaries

(Oct – Dec 2025)

#### GMSS Employees

Liza Jones	10/17/2018	7yrs
Hellen Bard	10/11/2021	4yrs
Ana Hammond	10/25/2023	2yrs
Bourgeois, Hallie	11/01/2019	6yrs
Acosta, Salvador	11/20/2023	3yrs
Patch, Darcy	11/25/2024	1yr
Barup, Lindsay	12/21/2016	9yrs
Gravel, Brenda	12/14/2020	5yrs
Henderson, Katherine	12/02/2024	1yr

#### Shared Living Providers

Tina Tyrell	10/1/1988	<b>37yrs!</b>
Faye Cochran	10/1/1999	<b>26 yrs!</b>
Tina Lehouillier	10/1/2007	<b>18yrs!</b>
Micheal & Amy Merchant	10/1/2011	<b>14yrs!</b>
Elke & Ernest Jones	10/1/2012	<b>13yrs!</b>
Penny Strong	10/15/2018	7yrs
Wendy Cookson	10/15/2018	7yrs
Gloria Young	10/22/2019	6yrs
Christine "Dede" Larow	10/6/2021	4yrs
Mary Hunt	10/29/2021	4yrs
Erika Thompson	11/1/2012	<b>13yrs!</b>
Darcy Berthiame	11/15/2017	8yrs
Christi Mason	11/1/2017	8yrs
Bill Coleman	12/1/2014	<b>11yrs!</b>
Grace Bagalio	12/1/2015	<b>10yrs!</b>
Marsha LaBree	12/1/2016	9yrs
Tammy LaPan	12/3/2020	5yrs
Jodi Hodgdon	12/1/2020	5yrs
Dorothy Leach	12/1/2020	5yrs
Justin Mollander	11/1/2020	5yrs
Amanda LaRock	12/16/2021	4yrs
Katie Belvel	11/15/2023	2yrs

### Green Mountain Support Services

93 James Road, Morrisville, VT 05661

Ph: 802-888-7602 Fax: 802-888-1182 Web: [gmssvt.org](http://gmssvt.org)