



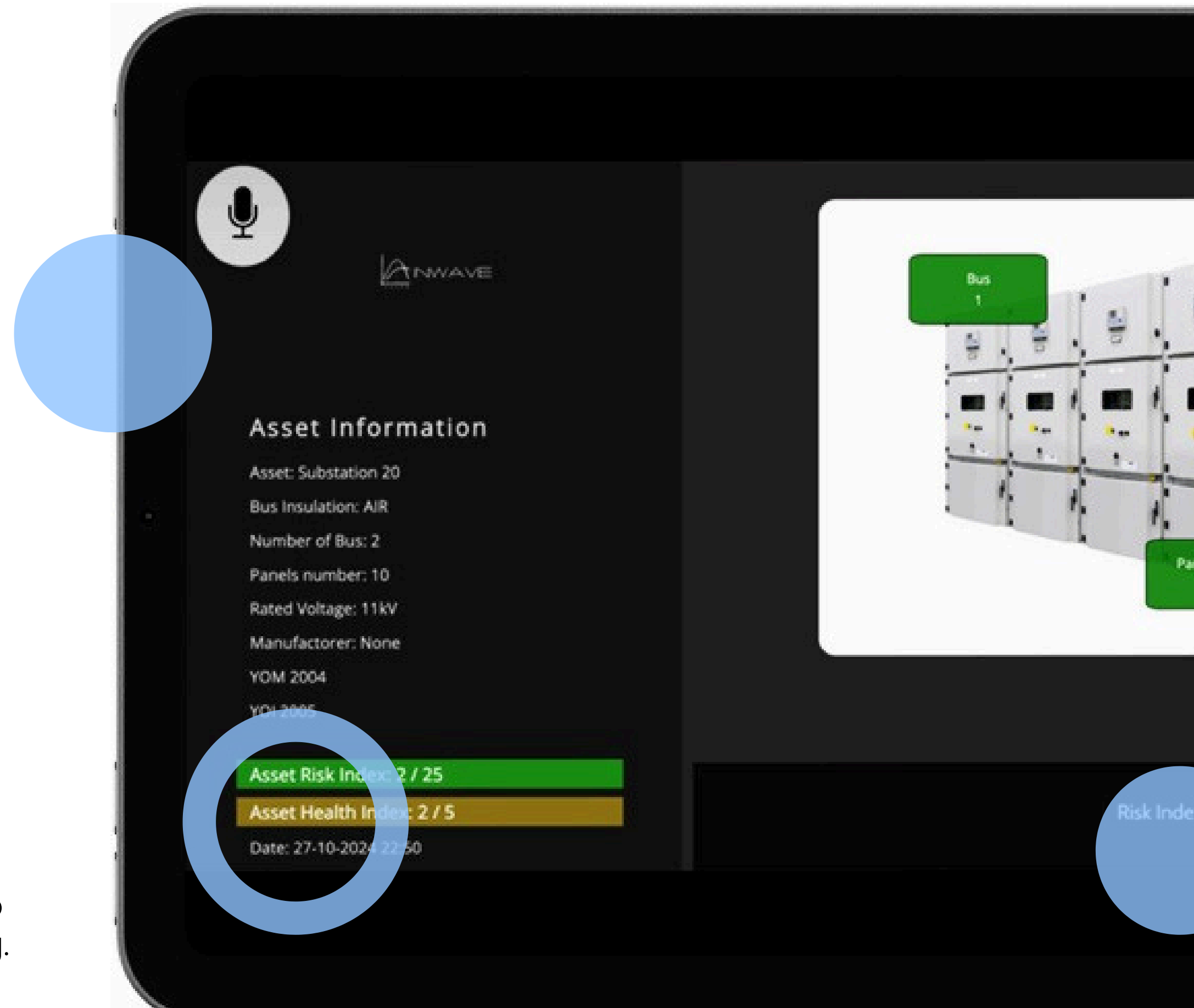
**Empower Your  
Data**



# Integrated Health Monitoring System

## Enhancing Condition-based Maintenance

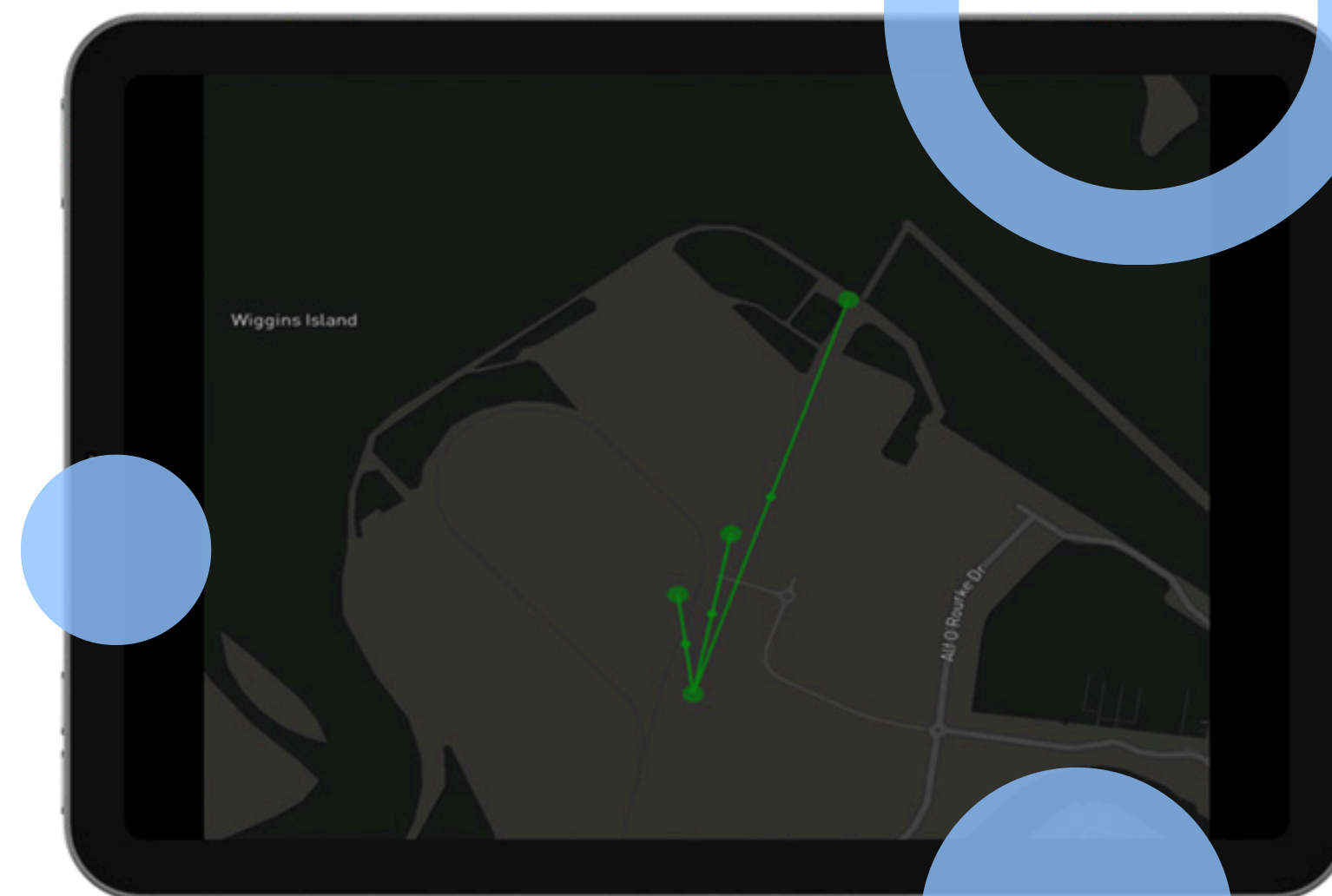
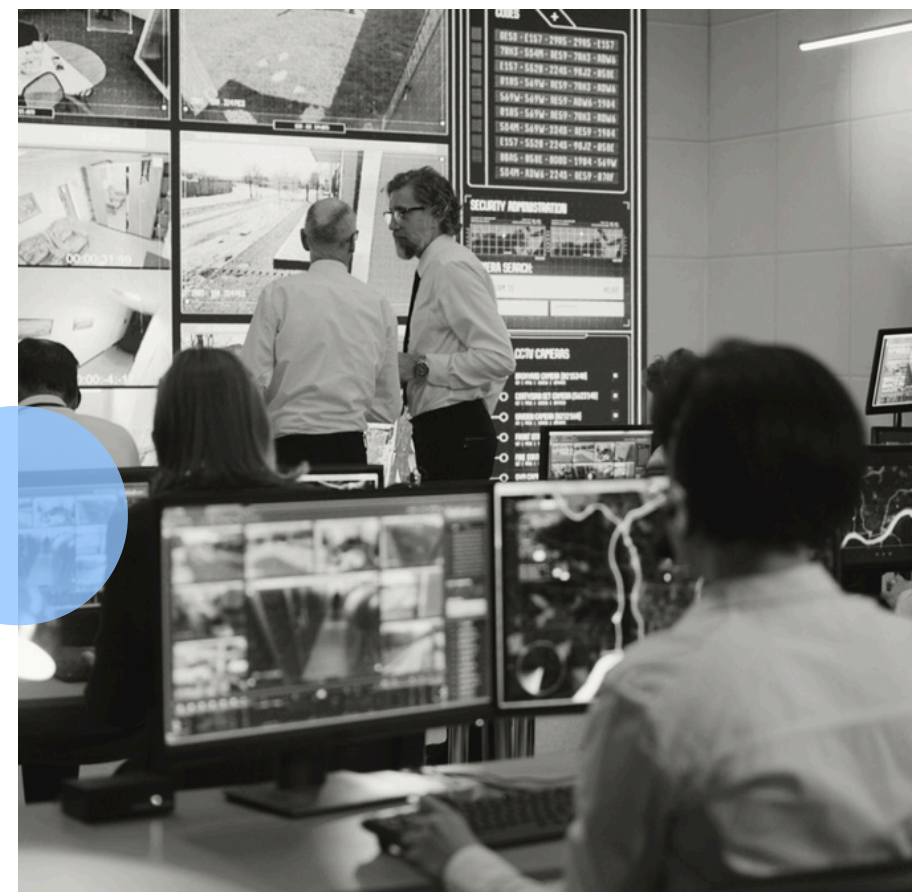
IHMS integrates multiple data sets to provide a holistic Asset Health and Risk Index in accordance with CIGRÉ TB 912. Diagnostic data is transformed into actionable insights that drive better decision-making.



# Centralise Analyse Integrate

## Bridging Data Gaps

The Integrated Health Monitoring System centralises diagnostic data from continuous monitoring and spot testing to automatically analyze the results, health, and risk indices for medium and high voltage electrical assets, seamlessly integrating diagnostic raw data and analyses into existing management software and dashboards.





# Portable Integrated Monitoring

Expanding the online monitoring capabilities

Complement the existing monitoring system, extending coverage to parts of the network where continuous solutions are not economically viable, all with the press of a button.







**Connect with us**

[info@inwave.au](mailto:info@inwave.au)