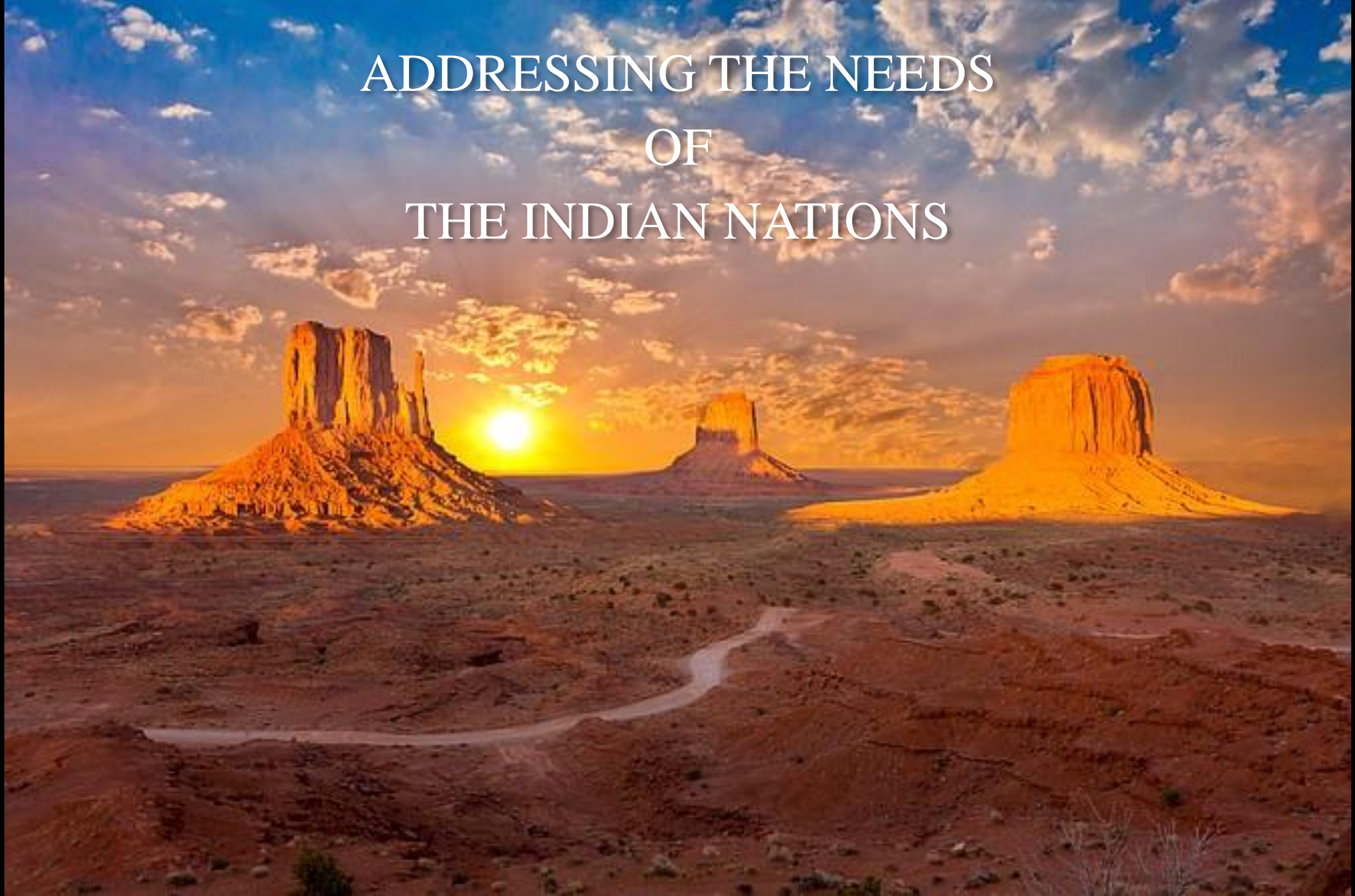


GROUNDING INFRASTRUCTURE SOLUTIONS



ADDRESSING THE NEEDS
OF
THE INDIAN NATIONS

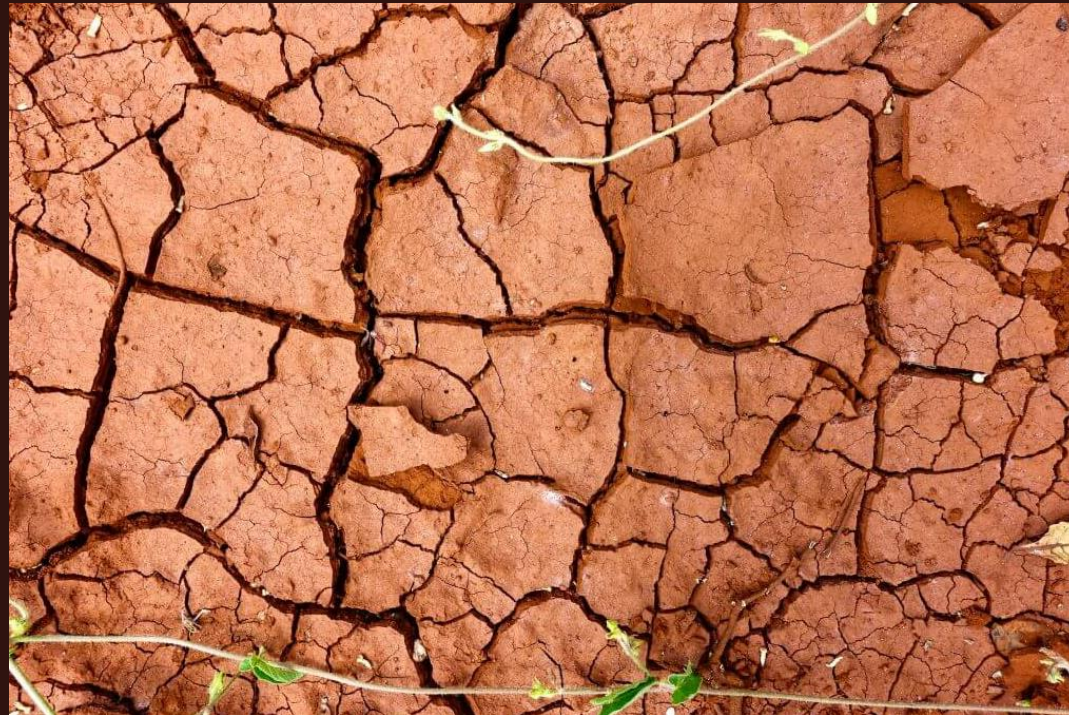


GROUNDING
INFRASTRUCTURE
SOLUTIONS

SUSTAINABLE SOLUTIONS
FOR
THE MOST PRESSING PROBLEMS:

GROUNDED
INFRASTRUCTURE
SOLUTIONS

ORGANIC AGRICULTURE





ESPALIER ORCHARDS

GROUNDED
INFRASTRUCTURE
SOLUTIONS
ORGANIC
AGRICULTURE



CONTAINERIZED AG



GREENHOUSES. AEROPONICS,
AND HYDROPONICS



HUMATE NATURAL
MINERAL FERTILIZER



GERMINATION
TECHNOLOGY

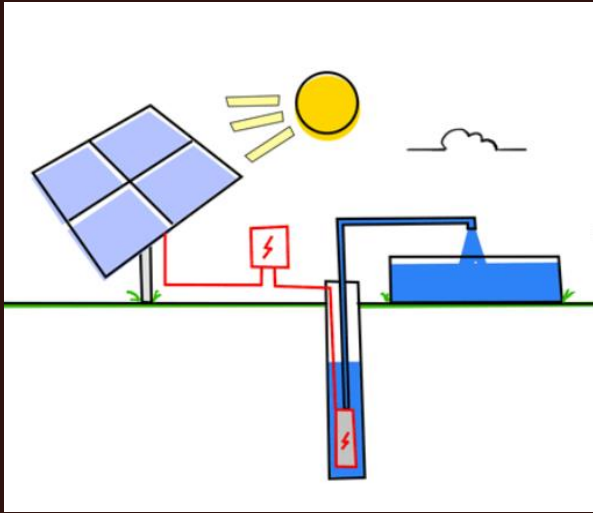
GROUNDED
INFRASTRUCTURE
SOLUTIONS

WATER

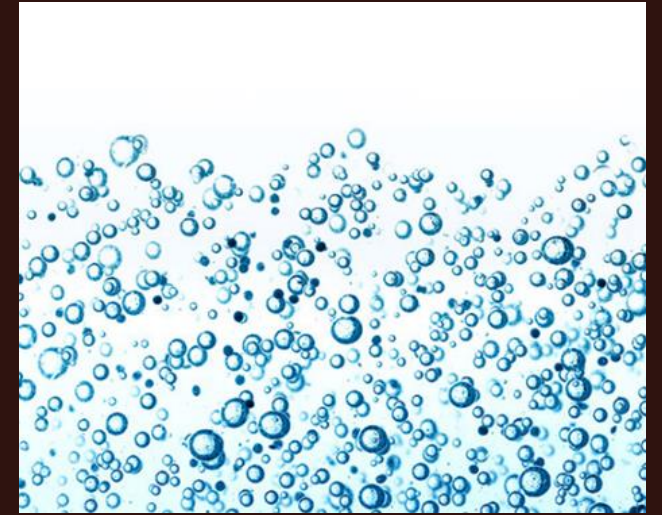


GROUND
INFRASTRUCTURE
SOLUTIONS

WATER



SOLAR WELLS



WATER ENHANCEMENT



WATER STORAGE



RAINWATER CAPTURE



PURIFICATION

GROUNDED
INFRASTRUCTURE
SOLUTIONS

ROAD STABILIZATION



GROUNDING
INFRASTRUCTURE
SOLUTIONS

ROAD STABILIZATION



ROAD-HARD
SCARIFY THE ROAD



ROAD-HARD
SPREAD NATURAL
BIOPOLYMERS



ROAD-HARD
TILL & COMPACT



ROAD-HARD
FINISHED ROAD

GROUND
INFRASTRUCTURE
SOLUTIONS

HOMES & COMMUNITIES

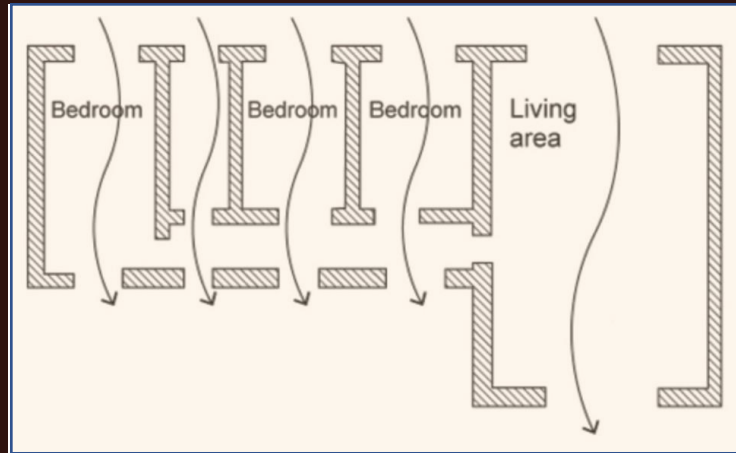


GROUND
INFRASTRUCTURE
SOLUTIONS

HOMES & COMMUNITIES



GARDEN HOMES



CLIMATE-ORIENTED DESIGN



EARTH CONSTRUCTION

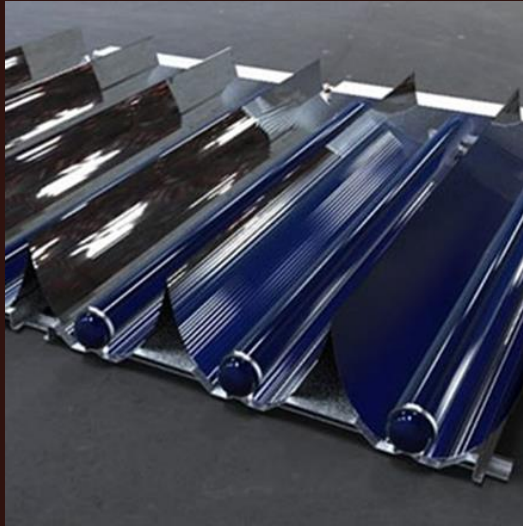
GROUNDING
INFRASTRUCTURE
SOLUTIONS

OFF-GRID POWER



GROUNDING
INFRASTRUCTURE
SOLUTIONS

OFF-GRID POWER



SOLAR HOT WATER
& SPACE HEATING



SHADING
PHOTOVOLTAICS



GEO THERMAL



LOW-IMPACT WIND

GROUNDING
INFRASTRUCTURE
SOLUTIONS

REMOTE BROADBAND



GROUNDING
INFRASTRUCTURE
SOLUTIONS

REMOTE BROADBAND



CORE COMMUNICATION INFRASTRUCTURE



REMOTE TRANSMITTER RELAYS

GROUNDING
INFRASTRUCTURE
SOLUTIONS

LOCAL JOBS





EARTH BLOCK PRODUCTION

GROUNDING
INFRASTRUCTURE
SOLUTIONS
LOCAL JOBS



ROAD STABILIZATION



SUSTAINABLE CONSTRUCTION



LIGHT MANUFACTURING



GREENHOUSE MANAGEMENT

GROUNDING
INFRASTRUCTURE
SOLUTIONS

COMPLETING THE BORDER WALL

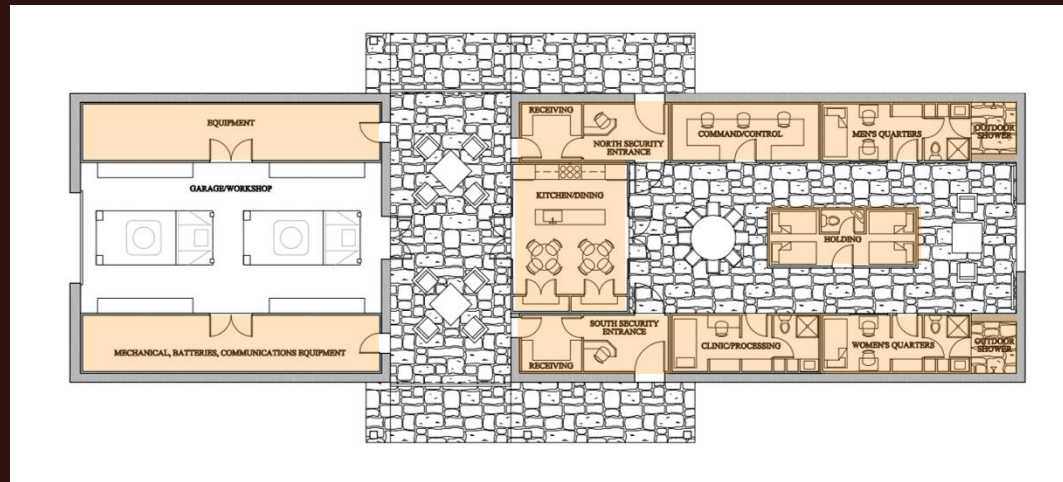


GROUND
INFRASTRUCTURE
SOLUTIONS

COMPLETING THE BORDER WALL



STABLE ROADS
& DUST CONTROL



REMOTE SECURITY STATION
DESIGN



COMMUNICATION &
SECURITY

GROUNDING INFRASTRUCTURE SOLUTIONS

ADDRESSING THE NEEDS OF THE INDIAN NATIONS OF ARIZONA



- DEVELOP WATER RESOURCES
- STABILIZE ROADS
- IMPLEMENT ORGANIC AGRICULTURE
- BUILD SOLAR EARTH HOMES
- INSTALL OFF-GRID POWER
- LINK REMOTE CELL AND INTERNET
- BUILD COMMUNITY CLINICS
- DEVELOP NEXT-GEN SCHOOLS
- CREATE TRIBAL JOBS AND PRODUCTS
- COMPLETE THE BORDER WALL

GROUNDED
INFRASTRUCTURE
SOLUTIONS

Dennis Yellowhorse Jones

President

U-Mate International Inc.

info@humate.com

David Cagle

Architect

davidcaglearchitect@gmail.com