




## Peace of Mind Automotive Inspection Report.

**Joe Trejo Jr.**  
**210-557-0686**

**Complete**

Score	4 / 4 (100%)	Flagged items	0	Actions	0
Site conducted		Unanswered			
Customer name		Luis Imj auto motor sales			
Date / Time		Dec 26th			
Payment method		Invoice			
Inspection cost		Fleet			
Vehicle Year / Make / Model / Color		2007 Mazda mx5 Miata			
VIN		39587 last 5			
<div></div> <div>Photo 1</div>					
license plate		Dealer			
Mileage		41948			
Color		Red			

Interior Electrical Functions		2 / 2 (100%)
Horn function		Function correct
Interior lighting function		Function correct
Power lock function		Function correct
Power window function		Function correct
Power seat function		N/A
Power Doors / lift gate function		N/A
Air conditioning below 60*		Yes
Heater above 90*		Yes
Climate controls function		Function correct
Radio / display screen function		Function correct
Speakers performing correctly		Function correct
GPS function		N/A
Satellite radio function		N/A
12V power supply function		Function correct
Wireless charging function		N/A
Cooled seat function		N/A
Heated seat function		N/A
Remote entry function		Issue present

Keyless entry remote is not functioning, as possible the battery needs to be replaced in the key fob

#### ADDITIONAL NOTES

Aside from the keyless entry remote the vehicle interior electrical functionality was correct across-the-board

Interior Condition	
Seat belt function	Function correct
Front seat condition	Normal wear
Rear seat condition	N/A
Carpeting condition	Normal wear
Headliner condition	Normal wear
Door panel condition	Normal wear
Dashboard condition	Normal wear
Headliner condition	Normal wear
Center console condition	Normal wear
Glove compartment condition	Normal wear
Sun visor condition	Normal wear
Trunk / Cargo area condition	Normal wear
Trim pieces condition	Normal wear

### ADDITIONAL NOTES

Normal wear to the interior as expected for the age and mileage on the vehicle. No water damage to the carpet or carpet installation. No rust on the bottom side of the dash. No evidence of flood damage present. No evidence of the vehicle being smoked inside. no severely damaged or missing panels. See all interior photos for evidence of current condition.



Photo 2



Photo 3



Photo 4



Photo 5



Photo 6



Photo 7



Photo 8



Photo 9



Photo 10



Photo 11



Photo 12



Photo 13



Photo 14



Photo 15



Photo 16



Photo 17



Photo 18



Photo 19



Photo 20



Photo 21



Photo 22



Photo 23



Photo 24



Photo 25



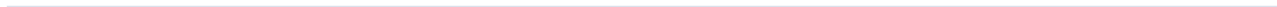
Photo 26



Photo 27



Photo 28



## Exterior Body / Structural Condition

### Paint depth on metal body panels

There is paint and bodywork present on the vehicle, the entire driver side of the vehicle has been repainted sometime after factory. This includes the front driver side fender, the driver side door as well as the driver side quarter panel. All of the other metal body panels are showing factory paint depth. There is damage present on the vehicle which is noticeable to the eye and present on all of the top side of the metal body panels. See photos. There is a blemish on the convertible top on the driver side, which has been taped closed. Normal wear to the exterior as expected for the age and mileage on the vehicle, including chips, scrapes, scratches and dings. There is no structural damage nor any structural damage repair work done.



Photo 29



Photo 30



Photo 31



Photo 32



Photo 33



Photo 34



Photo 35



Photo 36



Photo 37



Photo 38



Photo 39



Photo 40



Photo 41



Photo 42



Photo 43



Photo 44



Photo 45



Photo 46

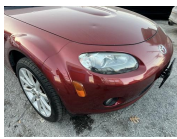


Photo 47

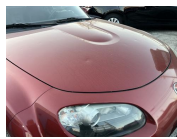


Photo 48



Photo 49



Photo 50



Photo 51

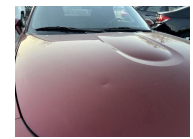


Photo 52



Photo 53

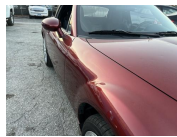


Photo 54



Photo 55



Photo 56



Photo 57



Photo 58



Photo 59



Photo 60



Photo 61

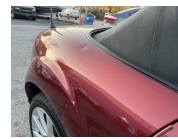


Photo 62

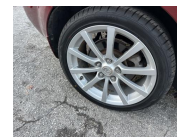


Photo 63



Photo 64



Photo 65



Photo 66



Photo 67



Photo 68



Photo 69



Photo 70



Photo 71



Photo 72



Photo 73



Photo 74



Photo 75



Photo 76





Photo 77



Photo 78



Photo 79



Photo 80



Photo 81



Photo 82



Photo 83



Photo 84



Photo 85



Photo 86



Photo 87



Photo 88



Photo 89



Photo 90



Photo 91



Photo 92



Photo 93



Photo 94



Photo 95



Photo 96



Photo 97



Photo 98



Photo 99



Photo 100

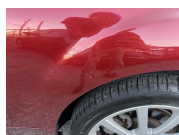


Photo 101

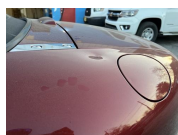


Photo 102

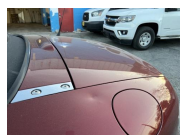


Photo 103



Photo 104

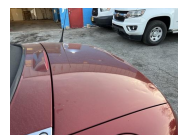


Photo 105



Photo 106



Photo 107

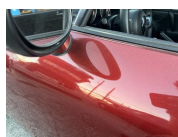


Photo 108



Photo 109

<b>Front bumper condition</b>	Normal wear
<b>Rear bumper condition</b>	Normal wear
<b>Hood panel condition</b>	Abnormal wear
<b>Driver side fender condition</b>	Abnormal wear
<b>Passenger side fender condition</b>	Abnormal wear
<b>Roof panel condition</b>	Abnormal wear
<b>Front driver side door Condition</b>	Normal wear
<b>Rear driver side door condition</b>	N/A
<b>Front passenger side door condition</b>	Normal wear
<b>Rear passenger side door condition</b>	N/A

Driver side quarter panel condition	Abnormal wear
Passenger side quarter panel condition	Abnormal wear
Trunk panel condition	Abnormal wear
Truck Bed condition	N/A
Tail gate condition	N/A
Chassis / Frame condition	Normal wear
Frame rail condition	Normal wear
Subframe condition	Normal wear
Engine cradle condition	Normal wear
Skid / Dust cover condition	Normal wear
Collapse beam condition	Normal wear
Window trim condition	Normal wear
Weather stripping condition	Normal wear
Front windshield condition	Normal wear
Other window glass condition	Normal wear
Wheel / Hubcap condition	Normal wear

**ADDITIONAL NOTES**

No excessive rust or corrosion to the frame/chassis vehicle has been utilized in a healthy climate throughout its lifespan

**Tire condition****Front driver side tire**

75-100% remaining

All four tires are brand new and have just been replaced. All four tires are matching.



Photo 110



Photo 111



Photo 112

**Front passenger side tire**

75-100% remaining

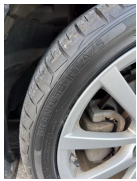


Photo 113



Photo 114



Photo 115

**Rear driver side tire**

75-100% remaining



Photo 116



Photo 117

**Rear passenger side tire**

75-100% remaining



Photo 118



Photo 119



Photo 120

**Spare tire and equipment**

Spare and tools present



**Battery / charging system**

**Battery date** Na

**Standing voltage** 12.55



Photo 121

**Loaded voltage** 13.9

Battery is accepting the charge from the alternator and the alternator charge output is correct



Photo 122

**Engine Testing / Condition**

2 / 2 (100%)

**Internal engine inspection w/ borescope camera**

Engine clean internally, no gunk or sludge presents. Proper signs of maintenance present. Block test passed, no internal combustion leak out. Coolant mixture correct and cooling system functionality is healthy. All external engine accessories in good working. No oil leaks or seepage from anywhere on the engine. External drive belts in decent condition. Currently no concern in mechanical issues present in relation to the engine or related accessories.



Photo 123



Photo 124



Photo 125



Photo 126



Photo 127



Photo 128



Photo 129



Photo 130



Photo 131



Photo 132



Photo 133

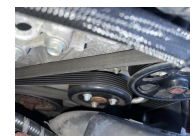


Photo 134



Photo 135

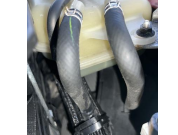


Photo 136



Photo 137



Photo 138

<b>Engine block test</b>	Pass
<b>Coolant mixture test</b>	Pass
<b>Air filter condition</b>	Normal wear
<b>Engine oil condition</b>	Normal wear
<b>Engine oil level</b>	Healthy
<b>Engine oil leaks</b>	None
<b>Coolant level</b>	Healthy
<b>Coolant hoses</b>	Healthy
<b>Radiator condition / function</b>	Healthy
<b>Engine operating temperature</b>	Healthy
<b>Cooling fan function</b>	Healthy
<b>Drive belt condition</b>	Healthy

Abnormal engine knock	None
Abnormal valve train rattle	None
Abnormal bearing noises	None
Engine gunk / sludge	None
Fuel tank	Healthy
Fuel injectors / lines	Healthy
Valve cover gaskets	Healthy
Intake manifold gasket	Healthy
Cylinder head gasket	Healthy
Oil pan gasket	Healthy
Timing cover gasket	Healthy
Rear main seal	Healthy
Timing belt / components	Healthy
Exhaust manifold	Healthy
External engine accessories	Healthy

**Transmission / Differentials****Transmission fluid level**

Healthy

**Transmission fluid condition**

Healthy

**Transmission fluid leaks**

None

No transmission fluid leak out from the transmission casing or the transmission pan area. Drive shaft and seal is free of any fluid leaks. The rear differential is free of any fluid leak out. Shift transitions out on the road are correct across the board through all gears. Clutch engagement is healthy, clutch seems factory.



Photo 139



Photo 140



Photo 141



Photo 142



Photo 143

**Transmission cooler / lines**

Healthy

**Front differential condition**

N/A

**Center differential condition**

N/A

**Rear differential condition**

Healthy



Photo 144



Photo 145



Photo 146



Photo 147



Photo 148

**Differential leaks****4x4 function / engagement****Clutch engagement****Gear engagement****Shift transitions****Drive shaft condition**

## Suspension condition

### Front shocks / struts

Healthy

Normal fatigue notice to the suspension components. All of the suspension components seem to be original. None of the suspension components are blown out and due form the replacement. The No excessive surface rust on the exposed metal. No abnormal noise or feedback from the suspension while out on the road. All of the rubber in relation to the mounts, joints and bushings has decent texture.



Photo 149



Photo 150



Photo 151



Photo 152



Photo 153



Photo 154

### Rear shocks / struts

Healthy



Photo 155



Photo 156



Photo 157



Photo 158



Photo 159



Photo 160

### Control arms upper

Healthy

### Control arms lower

Healthy

### Ball joints

Healthy

### Bushings

Healthy

### Torsion bars

Healthy

### Coilover function

Healthy

### Air ride function

N/A

### Airbag condition

N/A




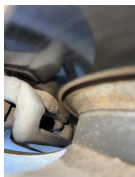



### Abnormal rust / corrosion to metals

None

### Deterioration of rubbers

None



Braking system condition	
Brake fluid condition	Healthy
Brake fluid level	Healthy
Brake fluid leaks	None
Moisture content in brake fluid	None
Brake lines	Healthy
Brake calipers front	Healthy
Brake calipers rear	Healthy
Brake drums rear	N/A
Brake rotors front	Healthy
Brake rotors rear	Healthy
Front brake pad life remaining	25-50% remaining
Right about 35% brake pad life remaining	
<div>    </div> <div>           Photo 161           Photo 162           Photo 163         </div>	
Rear brake pad life remaining	50-75% remaining
Right about 60% brake pad life remaining	
<div>     </div> <div>           Photo 164           Photo 165           Photo 166           Photo 167         </div>	
E-brake function	Healthy

Steering system condition	
Steering wheel	Healthy
Steering column	Healthy
Steering knuckle / shaft	Healthy
Steering box	N/A
Rack and pinion condition	Healthy
Inner tie rods	Healthy
outer tie rods	Healthy
Rack boots	Healthy
Power steering pump	Healthy
power steering lines	Healthy
Power steering leaks	None
Power steering fluid level	Healthy
Electric steering motor	N/A
Abnormal play / slack in steering	None
Steering alignment on road	Healthy

**Computer diagnostic scan****Engine control module**

Healthy

There are no active warning lights present on the vehicle. There are no live/active diagnostic fault codes present on the vehicle. There were a couple of historical fault codes present although neither of these codes are live/active and do not require any sort of attention.



Photo 168



Photo 169



Photo 170



Photo 171

**Transmission control module**

N/A

**Anti lock brake (ABS) module**

Healthy

**SRS module**

Healthy

**hybrid control module**

N/A

**Suspension control module**

N/A

## Vehicle road test

### Vehicle road test comments / concerns

Overall, the vehicle functionality is correct out on the road across-the-board. The tire pressure monitoring light is on the tires likely need a little bit of air added. Normal drivability characteristics, present as expected for the age and mileage on the vehicle.

---

**Value of vehicle / Diminished value due to repairs or current damage**

There is a little bit of diminished value to be considered due to the hail damage present on the vehicle.

---



Media summary



Photo 1



Photo 2



Photo 3



Photo 4



Photo 5



Photo 6



Photo 7



Photo 8



Photo 9



Photo 10



Photo 11



Photo 12





Photo 13



Photo 14



Photo 15



Photo 16



Photo 17



Photo 18



Photo 19



Photo 20



Photo 21



Photo 22





Photo 23



Photo 24



Photo 25



Photo 26



Photo 27



Photo 28



Photo 29



Photo 30





Photo 31



Photo 32



Photo 33



Photo 34



Photo 35



Photo 36



Photo 37



Photo 38





Photo 39



Photo 40



Photo 41



Photo 42



Photo 43



Photo 44



Photo 45



Photo 46





Photo 47



Photo 48



Photo 49



Photo 50



Photo 51



Photo 52



Photo 53

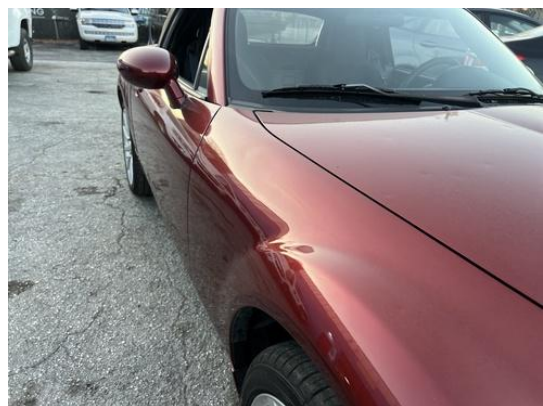


Photo 54





Photo 55



Photo 56



Photo 57



Photo 58



Photo 59



Photo 60



Photo 61



Photo 62





Photo 63



Photo 64



Photo 65



Photo 66



Photo 67



Photo 68



Photo 69



Photo 70





Photo 71



Photo 72



Photo 73



Photo 74



Photo 75



Photo 76



Photo 77



Photo 78





Photo 79



Photo 80



Photo 81



Photo 82



Photo 83



Photo 84



Photo 85

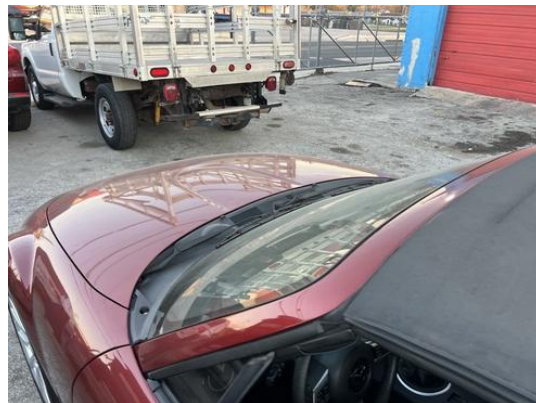


Photo 86



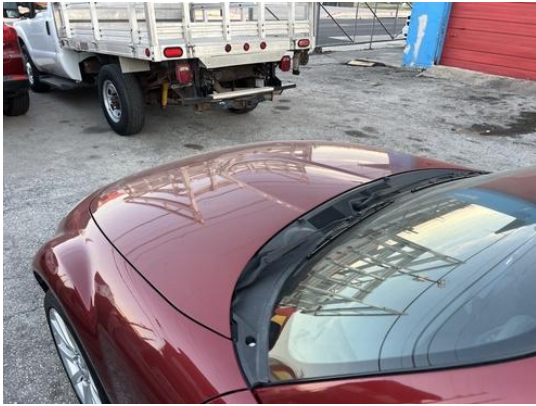


Photo 87



Photo 88



Photo 89



Photo 90



Photo 91



Photo 92



Photo 93



Photo 94





Photo 95



Photo 96



Photo 97



Photo 98



Photo 99



Photo 100



Photo 101



Photo 102

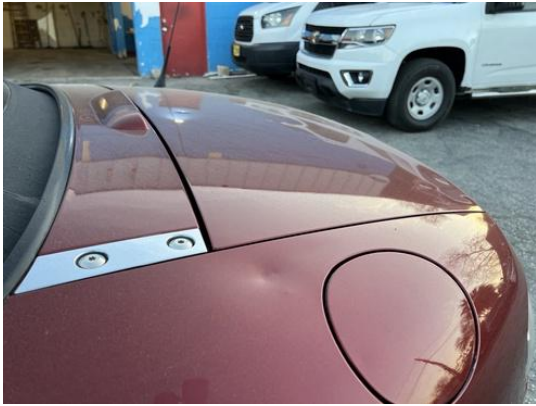


Photo 103



Photo 104

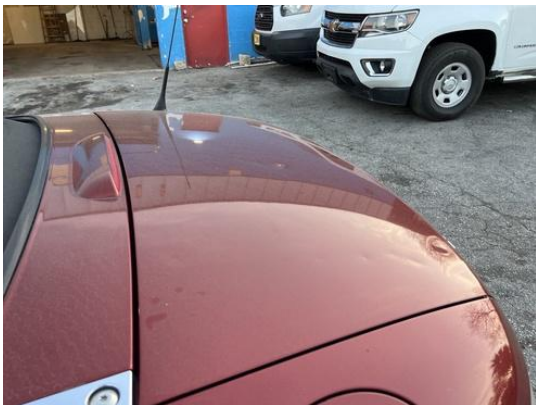


Photo 105



Photo 106



Photo 107



Photo 108





Photo 109



Photo 110



Photo 111



Photo 112



Photo 113



Photo 114



Photo 115



Photo 116





Photo 117



Photo 118



Photo 119



Photo 120



Photo 121



Photo 122



Photo 123



Photo 124



Photo 125



Photo 126





Photo 127



Photo 128



Photo 129



Photo 130



Photo 131



Photo 132



Photo 133

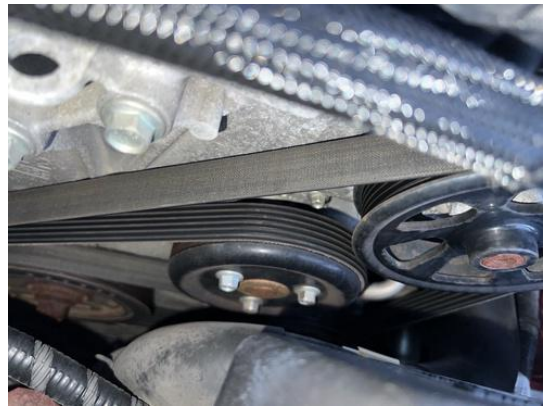


Photo 134

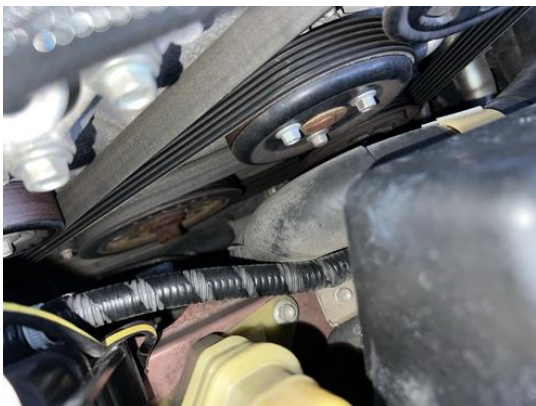


Photo 135



Photo 136



Photo 137



Photo 138





Photo 139



Photo 140



Photo 141



Photo 142



Photo 143



Photo 144



Photo 145



Photo 146





Photo 147



Photo 148



Photo 149



Photo 150



Photo 151



Photo 152



Photo 153



Photo 154



Photo 155



Photo 156





Photo 157

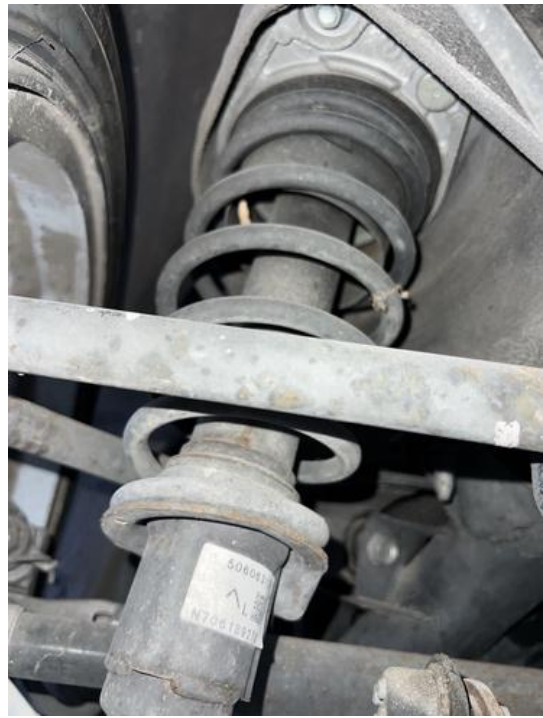


Photo 158



Photo 159



Photo 160



Photo 161



Photo 162



Photo 163



Photo 164



Photo 165



Photo 166

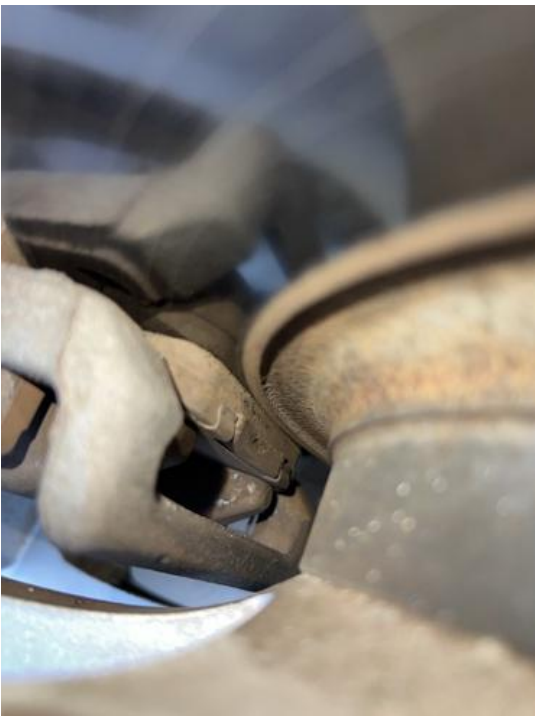


Photo 167

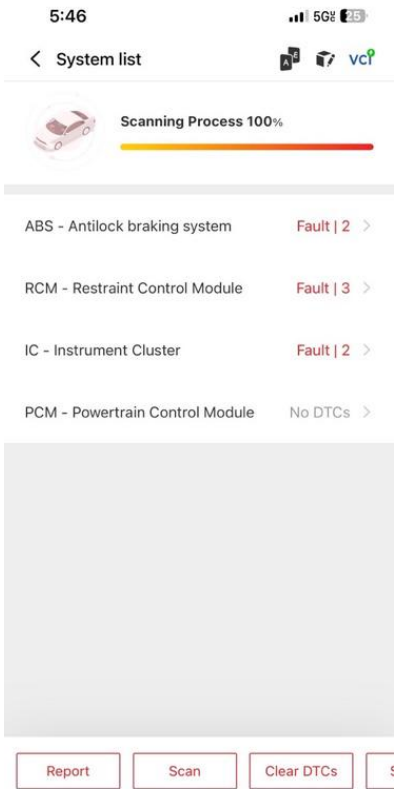


Photo 168

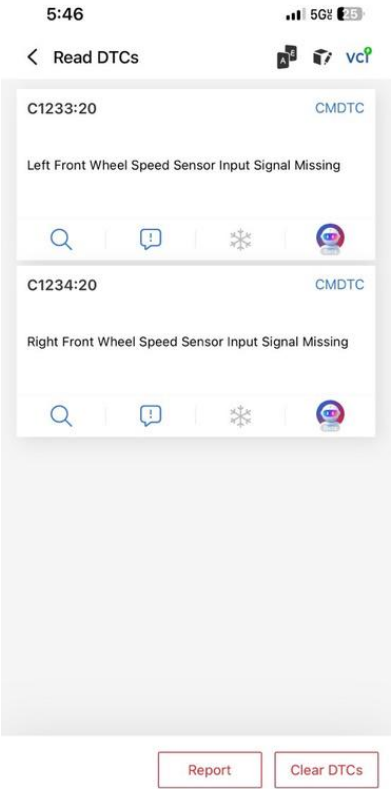


Photo 169

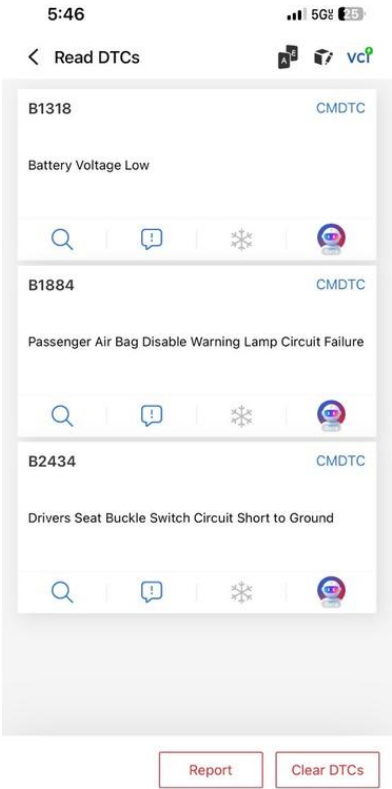


Photo 170

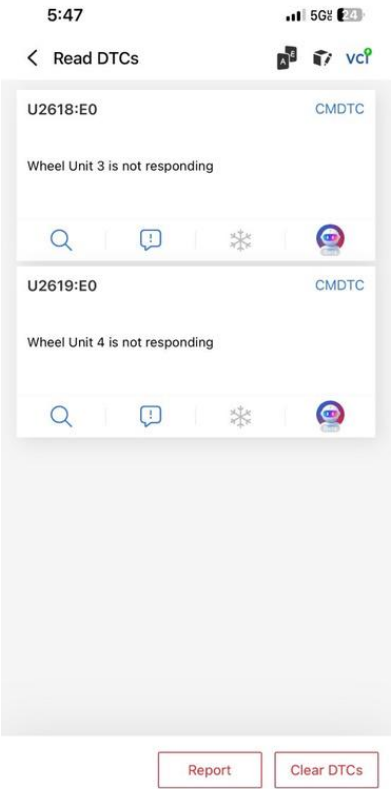


Photo 171