




# Peace of Mind Automotive Inspection Report.

**Joe Trejo Jr.**  
**210-557-0686**

Peace of Mind Automotive Inspection Report.  
Joe Trejo Jr.  
210-557-0686

**Complete**

Score	4 / 4 (100%)	Flagged items	0	Actions	0
<b>Site conducted</b>					Unanswered
<b>Customer name</b>					Luis LMJ auto motor sales
<b>Date / Time</b>					May 18th
<b>Payment method</b>					Invoice
<b>Inspection cost</b>					Fleet
<b>Vehicle Year / Make / Model / Color</b>					2011 ford f150 limited
<b>VIN</b>					83091 last 5
					
Photo 1					
<b>license plate</b>					Dealer
<b>Mileage</b>					131060
<b>Color</b>					White

Interior Electrical Functions	2 / 2 (100%)
Horn function	Function correct
Interior lighting function	Function correct
Power lock function	Function correct
Power window function	Function correct
Power seat function	Function correct
Power Doors / lift gate function	N/A
Air conditioning below 60*	Yes
Heater above 90*	Yes
Climate controls function	Function correct
Radio / display screen function	Function correct
Speakers performing correctly	Function correct
GPS function	Function correct
Satellite radio function	Function correct
12V power supply function	Function correct
Wireless charging function	N/A
Cooled seat function	Function correct
Heated seat function	Function correct
Remote entry function	Function correct

#### ADDITIONAL NOTES

Vehicle interior electrical functionality is correct across-the-board, no inoperable function.

Interior Condition	
Seat belt function	Function correct
Front seat condition	Normal wear
Rear seat condition	Normal wear
Carpeting condition	Normal wear
Headliner condition	Normal wear
Door panel condition	Normal wear
Dashboard condition	Normal wear
Headliner condition	Normal wear
Center console condition	Normal wear
Glove compartment condition	Normal wear
Sun visor condition	Normal wear
Trunk / Cargo area condition	Normal wear
Trim pieces condition	Normal wear

### ADDITIONAL NOTES

Normal wear to the interior as expected for the age and mileage on the vehicle. No water damage to the carpet or carpet installation. No rust on the bottom side of the dash. No evidence of flood damage present. No evidence of the vehicle being smoked inside. no severely damaged or missing panels. See all interior photos for evidence of current condition.



Photo 2



Photo 3



Photo 4



Photo 5



Photo 6



Photo 7



Photo 8



Photo 9



Photo 10



Photo 11



Photo 12



Photo 13



Photo 14



Photo 15



Photo 16



Photo 17



Photo 18



Photo 19



Photo 20



Photo 21



Photo 22



Photo 23



Photo 24



Photo 25



Photo 26



Photo 27



Photo 28

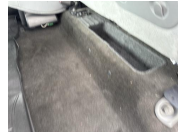


Photo 29



Photo 30



Photo 31



Photo 32



Photo 33



Photo 34



Photo 35



Photo 36



Photo 37



Photo 38



Photo 39



Photo 40



Photo 41



Photo 42



Photo 43



Photo 44

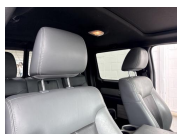


Photo 45



Photo 46



Photo 47



Photo 48



Photo 49



Photo 50

## Exterior Body / Structural Condition

### Paint depth on metal body panels

Factory, matching paint depth on all exterior metal body panels aside from the front passenger side door, which has had some paint touchup work done . All exterior metal body panels are original to the vehicle. No structural damage presents nor any structural damage repair work done. No accident damage presents nor any accident damage repair work done . All window glass is original to the vehicle. Normal wear to the exterior as expected for the age and mileage including chips, scrapes, scratches and dings. Overall vehicle exterior is well-kept. See all exterior photos for evidence of current condition.



Photo 51



Photo 52



Photo 53



Photo 54



Photo 55



Photo 56



Photo 57



Photo 58



Photo 59



Photo 60



Photo 61



Photo 62



Photo 63



Photo 64



Photo 65



Photo 66



Photo 67



Photo 68



Photo 69



Photo 70



Photo 71



Photo 72



Photo 73



Photo 74



Photo 75



Photo 76



Photo 77



Photo 78



Photo 79



Photo 80



Photo 81



Photo 82



Photo 83

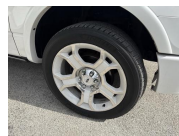


Photo 84



Photo 85



Photo 86



Photo 87



Photo 88



Photo 89



Photo 90



Photo 91



Photo 92



Photo 93



Photo 94



Photo 95



Photo 96



Photo 97



Photo 98



Photo 99



Photo 100



Photo 101



Photo 102



Photo 103



Photo 104



Photo 105



Photo 106



Photo 107



Photo 108



Photo 109



Photo 110



Photo 111



Photo 112



Photo 113



Photo 114



Photo 115



Photo 116



Photo 117



Photo 118



Photo 119



Photo 120



Photo 121



Photo 122



Photo 123



Photo 124



Photo 125



Photo 126

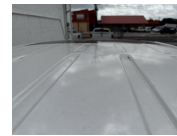


Photo 127



Photo 128



Photo 129

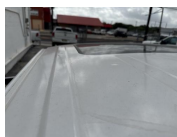


Photo 130



Photo 131



Photo 132



Photo 133



Photo 134



Photo 135



Photo 136



Photo 137



Photo 138



Photo 139



Photo 140



Photo 141



Photo 142



Photo 143



Photo 144



Photo 145



Photo 146



Photo 147



Photo 148



Photo 149



Photo 150



Photo 151



Photo 152

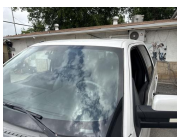


Photo 153



Photo 154



Photo 155



Photo 156



Photo 157



Photo 158



Photo 159



Photo 160

<b>Front bumper condition</b>	Normal wear
<b>Rear bumper condition</b>	Normal wear
<b>Hood panel condition</b>	Normal wear
<b>Driver side fender condition</b>	Normal wear
<b>Passenger side fender condition</b>	Normal wear
<b>Roof panel condition</b>	Normal wear
<b>Front driver side door Condition</b>	Normal wear
<b>Rear driver side door condition</b>	Normal wear
<b>Front passenger side door condition</b>	Normal wear
<b>Rear passenger side door condition</b>	Normal wear
<b>Driver side quarter panel condition</b>	N/A
<b>Passenger side quarter panel condition</b>	N/A
<b>Trunk panel condition</b>	N/A
<b>Truck Bed condition</b>	Normal wear
<b>Tail gate condition</b>	Normal wear
<b>Chassis / Frame condition</b>	Normal wear
<b>Frame rail condition</b>	Normal wear
<b>Subframe condition</b>	Normal wear
<b>Engine cradle condition</b>	Normal wear
<b>Skid / Dust cover condition</b>	Normal wear
<b>Collapse beam condition</b>	Normal wear
<b>Window trim condition</b>	Normal wear

<b>Weather stripping condition</b>	Normal wear
<b>Front windshield condition</b>	Normal wear
<b>Other window glass condition</b>	Normal wear
<b>Wheel / Hubcap condition</b>	Normal wear

**ADDITIONAL NOTES**

No excessive rust or corrosion to the frame/chassis

## Tire condition

### Front driver side tire

75-100% remaining

Dealer has replaced all four tires on the vehicle. All four tires are brand, new and matching all around.



Photo 161



Photo 162



Photo 163



Photo 164



Photo 165

### Front passenger side tire

75-100% remaining



Photo 166

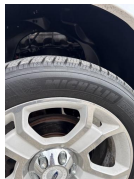


Photo 167



Photo 168

### Rear driver side tire

75-100% remaining



Photo 169



Photo 170



Photo 171

### Rear passenger side tire

75-100% remaining



Photo 172



Photo 173



Photo 174

### Spare tire and equipment

Spare and tools present

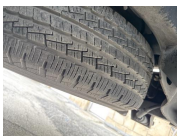


Photo 175

**Battery / charging system**

**Battery date** No date sticker

---

**Standing voltage** 12.8

---

**Loaded voltage** 14.1

Battery is accepting the charge from the alternator and the alternator charge output is correct



Photo 176

---

**Engine Testing / Condition**

2 / 2 (100%)

**Internal engine inspection w/ borescope camera**

Engine clean internally, no gunk or sludge presents. Proper signs of maintenance present. Block test passed, no internal combustion leak out. Coolant mixture correct and cooling system functionality is healthy. All external engine accessories in good working. No leaks or seepage from anywhere on the engine. External drive belts in decent condition. Currently no concern in mechanical issues present in relation to the engine or related accessories.



Photo 177



Photo 178

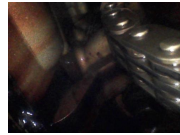


Photo 179

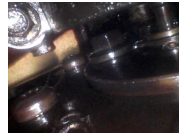


Photo 180



Photo 181



Photo 182



Photo 183



Photo 184



Photo 185

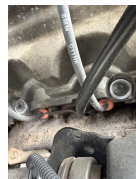


Photo 186



Photo 187



Photo 188

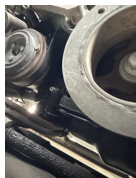


Photo 189



Photo 190



Photo 191

**Engine block test**

Pass



Photo 192



Photo 193

**Coolant mixture test**

Pass

**Air filter condition**

Normal wear

**Engine oil condition**

Normal wear

**Engine oil level**

Healthy

**Engine oil leaks**

None

**Coolant level**

Healthy

**Coolant hoses**

Healthy

**Radiator condition / function**

Healthy

<b>Engine operating temperature</b>	Healthy
<b>Cooling fan function</b>	Healthy
<b>Drive belt condition</b>	Healthy
<b>Abnormal engine knock</b>	None
<b>Abnormal valve train rattle</b>	None
<b>Abnormal bearing noises</b>	None
<b>Engine gunk / sludge</b>	None
<b>Fuel tank</b>	Healthy
<b>Fuel injectors / lines</b>	Healthy
<b>Valve cover gaskets</b>	Healthy
<b>Intake manifold gasket</b>	Healthy
<b>Cylinder head gasket</b>	Healthy
<b>Oil pan gasket</b>	Healthy
<b>Timing cover gasket</b>	Healthy
<b>Rear main seal</b>	Healthy
<b>Timing belt / components</b>	Healthy
<b>Exhaust manifold</b>	Healthy
<b>External engine accessories</b>	Healthy

**Transmission / Differentials**

**Transmission fluid level**

Healthy

**Transmission fluid condition**

Healthy

**Transmission fluid leaks**

None

No transmission fluid leaks from the transmission casing or the transmission pan area. The tail shaft seal is free of any fluid leaks. The driveshaft is in healthy condition. Shift transitions out on the road are correct across the board. No fluid leak out from the rear differential. No fluid leak out from the front differential or the center differential. 4 x 4 system functionality is correct.



Photo 194



Photo 195



Photo 196



Photo 197



Photo 198



Photo 199



Photo 200

**Transmission cooler / lines**

Healthy

**Front differential condition**

Healthy



Photo 201



Photo 202



Photo 203



Photo 204

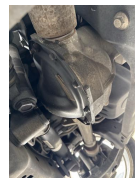


Photo 205

**Center differential condition**

Healthy



Photo 206



Photo 207



Photo 208

**Rear differential condition**

Healthy



Photo 209



Photo 210



Photo 211

**Differential leaks**

None

**4x4 function / engagement**

Healthy

<b>Clutch engagement</b>	Healthy
<b>Gear engagement</b>	Healthy
<b>Shift transitions</b>	Healthy
<b>Drive shaft condition</b>	Healthy

## Suspension condition

### Front shocks / struts

Healthy

Normal fatigue notice to the suspension components. All of the suspension components seem to be original. None of the suspension components are blown out and due form the replacement. The No excessive surface rust on the exposed metal. No abnormal noise or feedback from the suspension while out on the road. All of the rubber in relation to the mounts, joints and bushings has decent texture.



Photo 212

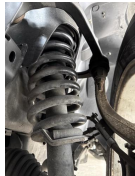


Photo 213



Photo 214



Photo 215



Photo 216

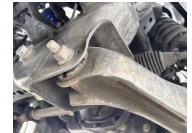


Photo 217



Photo 218



Photo 219



Photo 220



Photo 221



Photo 222

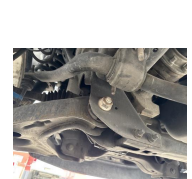


Photo 223

### Rear shocks / struts

Healthy



Photo 224



Photo 225



Photo 226



Photo 227



Photo 228



Photo 229

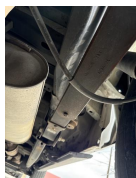


Photo 230

### Control arms upper

Healthy

### Control arms lower

Healthy

### Ball joints

Healthy

### Bushings

Healthy

### Torsion bars

Healthy

### Coilover function

N/A

### Air ride function

N/A

### Airbag condition







N/A

**Abnormal rust / corrosion to metals**

None

**Deterioration of rubbers**

None

Braking system condition	
Brake fluid condition	Healthy
Brake fluid level	Healthy
Brake fluid leaks	None
Moisture content in brake fluid	None
Brake lines	Healthy
Brake calipers front	Healthy
Brake calipers rear	Healthy
Brake drums rear	N/A
Brake rotors front	Healthy
Brake rotors rear	Healthy
<b>Front brake pad life remaining</b>	50-75% remaining
<p>Right around 55% brake pad life remaining on the front brake system and right about 60% brake pad life remaining on the rear brake system</p>	
<div style="display: flex; justify-content: space-around;"> <div style="text-align: center;">  <p>Photo 231</p> </div> <div style="text-align: center;">  <p>Photo 232</p> </div> <div style="text-align: center;">  <p>Photo 233</p> </div> </div>	
<b>Rear brake pad life remaining</b>	50-75% remaining
<div style="display: flex; justify-content: space-around;"> <div style="text-align: center;">  <p>Photo 234</p> </div> <div style="text-align: center;">  <p>Photo 235</p> </div> <div style="text-align: center;">  <p>Photo 236</p> </div> </div>	
<b>E-brake function</b>	Healthy

Steering system condition	
Steering wheel	Healthy
Steering column	Healthy
Steering knuckle / shaft	Healthy
Steering box	N/A
Rack and pinion condition	Healthy
Inner tie rods	Healthy
outer tie rods	Healthy
Rack boots	Healthy
Power steering pump	Healthy
power steering lines	Healthy
Power steering leaks	None
Power steering fluid level	Healthy
Electric steering motor	Healthy
Abnormal play / slack in steering	None
Steering alignment on road	Healthy

## Computer diagnostic scan

### Engine control module

Healthy

All of the main control modules on the vehicle we're free of any live/active diagnostic fault codes. All live feed diagnostic test testing with successfully passed. All live feed emission test testing was successfully passed. There were a couple of historical/non-active diagnostic fault codes present across a couple of different control modules on the vehicle. No attention is needed for the non-active fault codes. This is just evidence of fault codes that have popped up in the past.



Photo 237



Photo 238



Photo 239



Photo 240



Photo 241



Photo 242



Photo 243



Photo 244

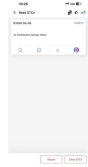


Photo 245

### Transmission control module

Healthy

### Anti lock brake (ABS) module

Healthy

### SRS module

Healthy

### hybrid control module

N/A

### Suspension control module

N/A

## Vehicle road test

### Vehicle road test comments / concerns

Normal drive characteristics present as expected for the age and mileage on this specific vehicle. No major/concerning drive abnormalities or issues.

---

**Value of vehicle / Diminished value due to repairs or current damage**

No diminished value due to no structural damage presence nor any structural damage repair work done

---

## Media summary



Photo 1



Photo 2



Photo 3



Photo 4



Photo 5



Photo 6



Photo 7



Photo 8



Photo 9



Photo 10



Photo 11



Photo 12



Photo 13



Photo 14



Photo 15



Photo 16



Photo 17



Photo 18



Photo 19



Photo 20



Photo 21



Photo 22



Photo 23



Photo 24



Photo 25



Photo 26



Photo 27



Photo 28



Photo 29



Photo 30



Photo 31



Photo 32



Photo 33



Photo 34



Photo 35



Photo 36



Photo 37

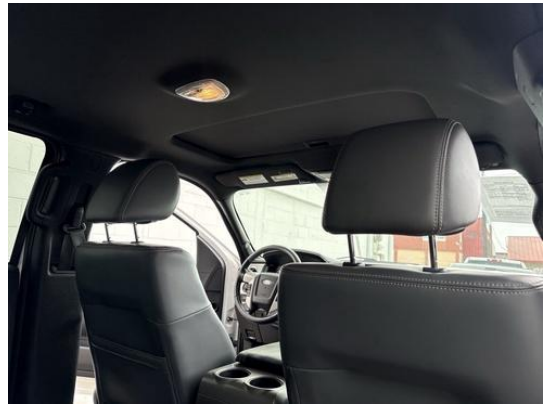


Photo 38



Photo 39



Photo 40



Photo 41



Photo 42



Photo 43



Photo 44

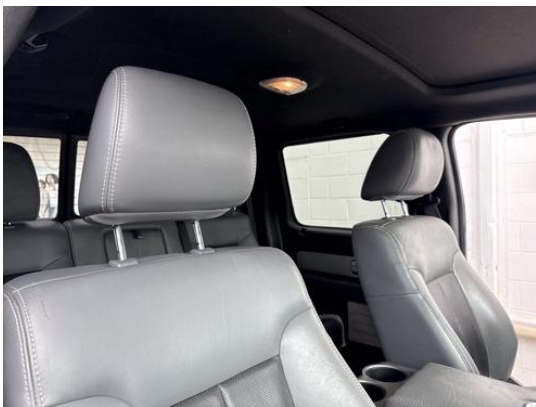


Photo 45



Photo 46



Photo 47



Photo 48



Photo 49



Photo 50



Photo 51



Photo 52



Photo 53



Photo 54



Photo 55



Photo 56



Photo 57



Photo 58



Photo 59



Photo 60



Photo 61



Photo 62



Photo 63



Photo 64



Photo 65



Photo 66



Photo 67



Photo 68



Photo 69



Photo 70



Photo 71



Photo 72



Photo 73



Photo 74



Photo 75



Photo 76



Photo 77



Photo 78



Photo 79



Photo 80



Photo 81



Photo 82



Photo 83



Photo 84



Photo 85



Photo 86



Photo 87



Photo 88



Photo 89



Photo 90



Photo 91



Photo 92



Photo 93



Photo 94



Photo 95



Photo 96



Photo 97



Photo 98



Photo 99



Photo 100



Photo 101



Photo 102



Photo 103



Photo 104



Photo 105



Photo 106



Photo 107



Photo 108



Photo 109



Photo 110



Photo 111



Photo 112



Photo 113



Photo 114



Photo 115



Photo 116



Photo 117



Photo 118



Photo 119



Photo 120



Photo 121



Photo 122



Photo 123



Photo 124



Photo 125



Photo 126



Photo 127



Photo 128



Photo 129



Photo 130



Photo 131



Photo 132



Photo 133



Photo 134



Photo 135



Photo 136



Photo 137



Photo 138



Photo 139



Photo 140



Photo 141



Photo 142



Photo 143



Photo 144



Photo 145



Photo 146



Photo 147



Photo 148



Photo 149



Photo 150



Photo 151



Photo 152



Photo 153



Photo 154



Photo 155



Photo 156



Photo 157



Photo 158



Photo 159



Photo 160



Photo 161



Photo 162



Photo 163



Photo 164



Photo 165



Photo 166



Photo 167



Photo 168



Photo 169



Photo 170



Photo 171



Photo 172



Photo 173



Photo 174



Photo 175



Photo 176

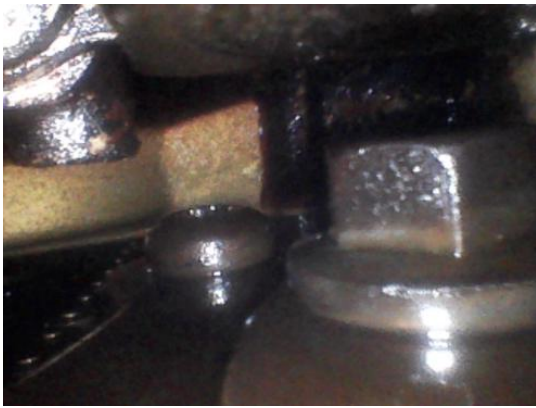


Photo 177



Photo 178

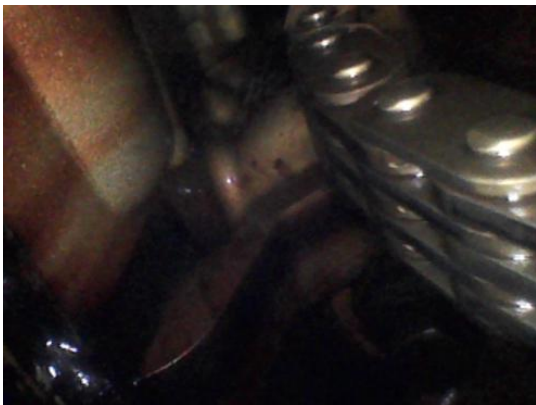


Photo 179



Photo 180

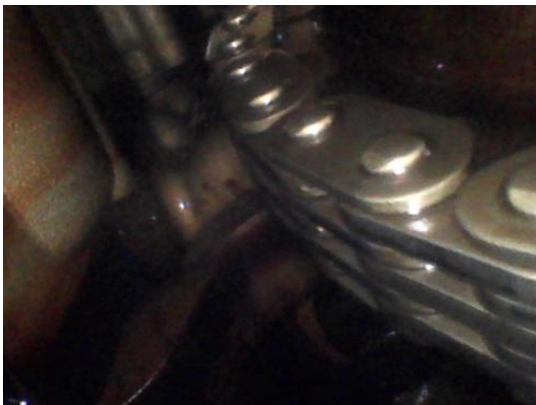


Photo 181

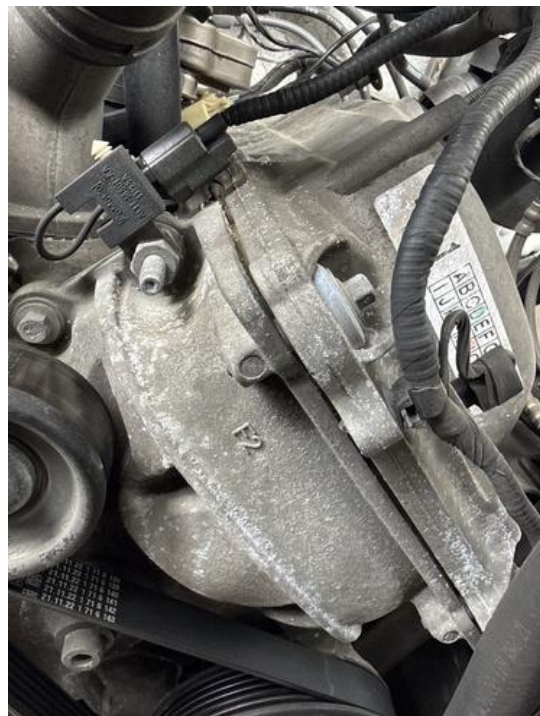


Photo 182



Photo 183



Photo 184



Photo 185



Photo 186



Photo 187



Photo 188



Photo 189

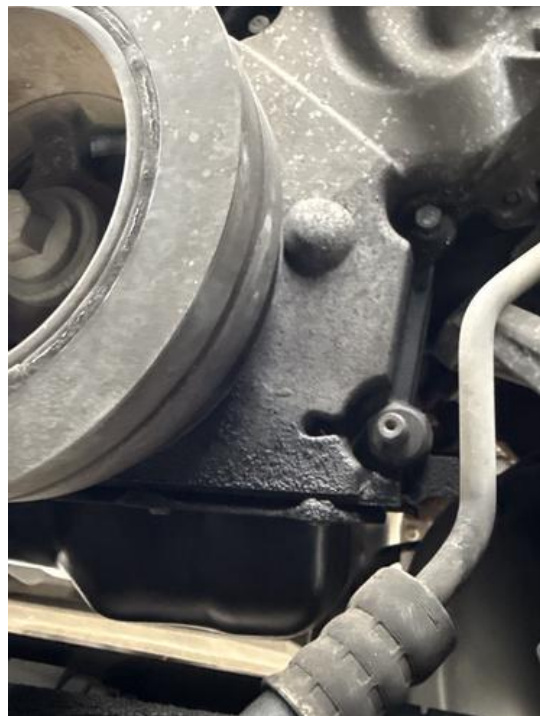


Photo 190



Photo 191



Photo 192



Photo 193



Photo 194



Photo 195



Photo 196



Photo 197



Photo 198



Photo 199



Photo 200



Photo 201



Photo 202



Photo 203

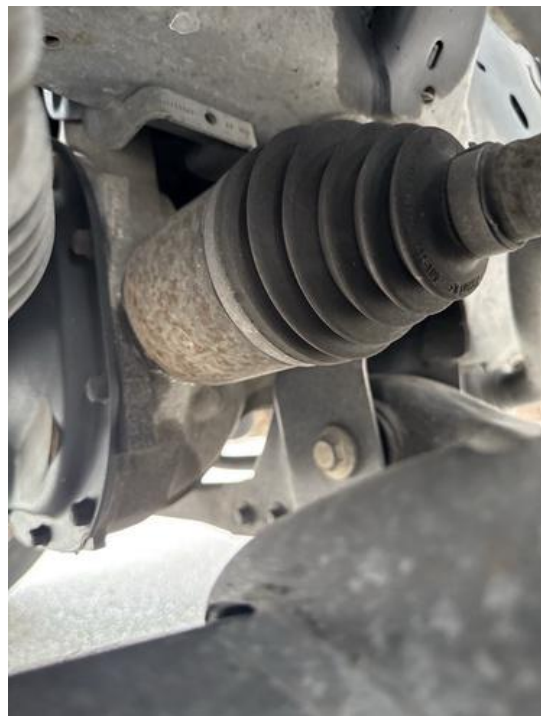


Photo 204



Photo 205



Photo 206



Photo 207



Photo 208



Photo 209



Photo 210



Photo 211



Photo 212



Photo 213



Photo 214

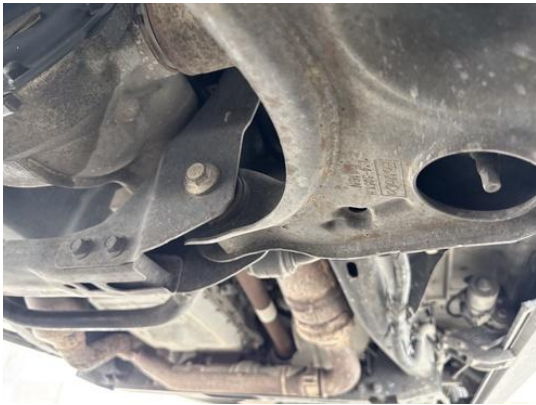


Photo 215



Photo 216



Photo 217



Photo 218



Photo 219



Photo 220



Photo 221



Photo 222

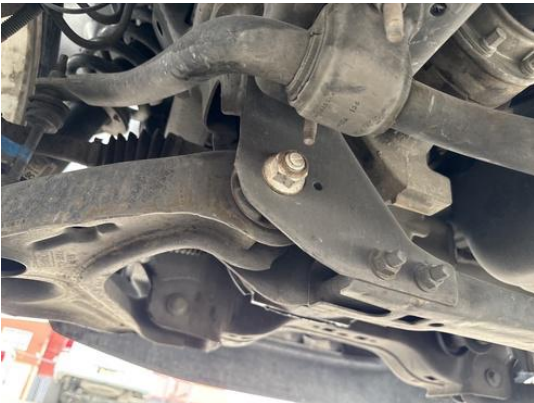


Photo 223



Photo 224



Photo 225



Photo 226



Photo 227



Photo 228



Photo 229



Photo 230



Photo 231



Photo 232



Photo 233



Photo 234



Photo 235



Photo 236

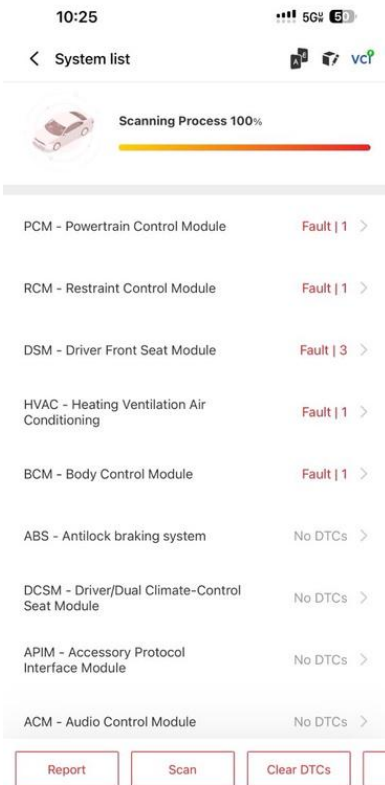


Photo 237



Photo 238

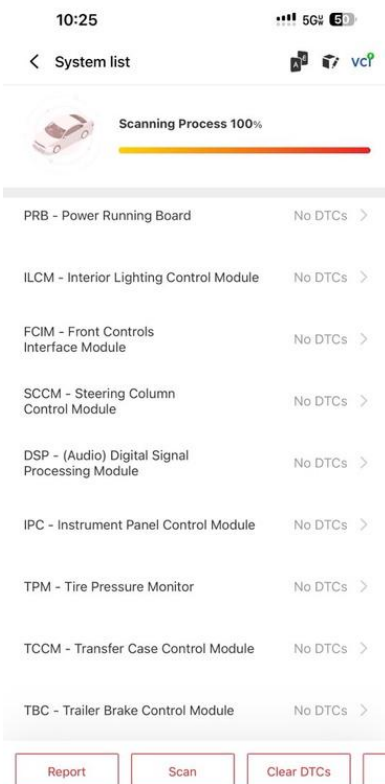


Photo 239

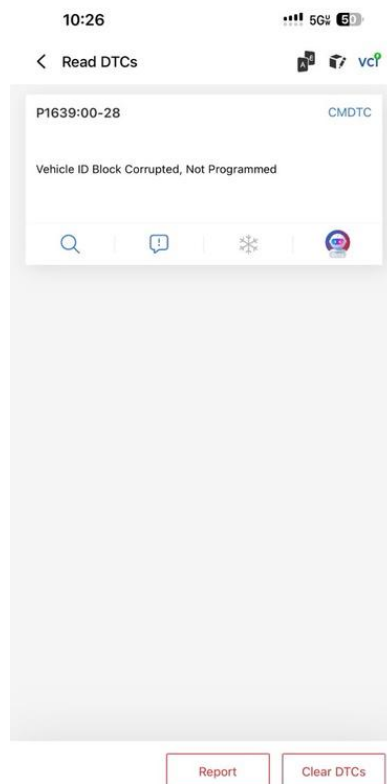


Photo 240

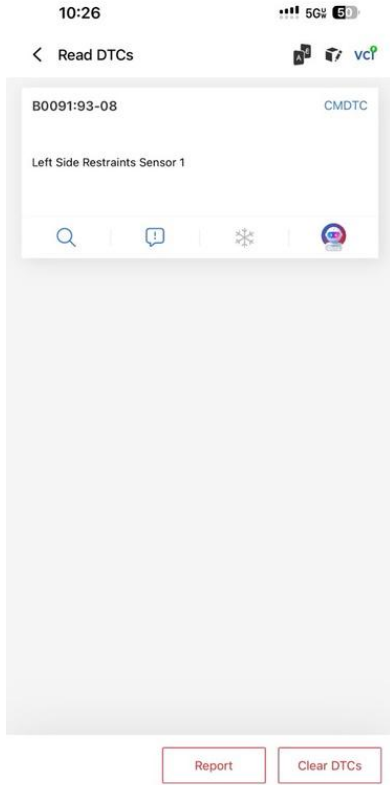


Photo 241

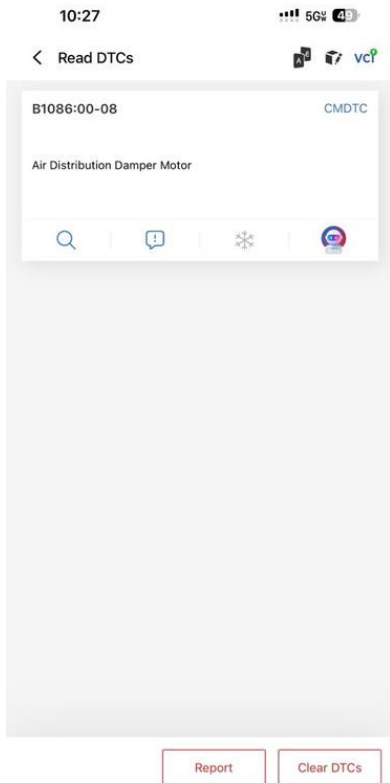


Photo 243

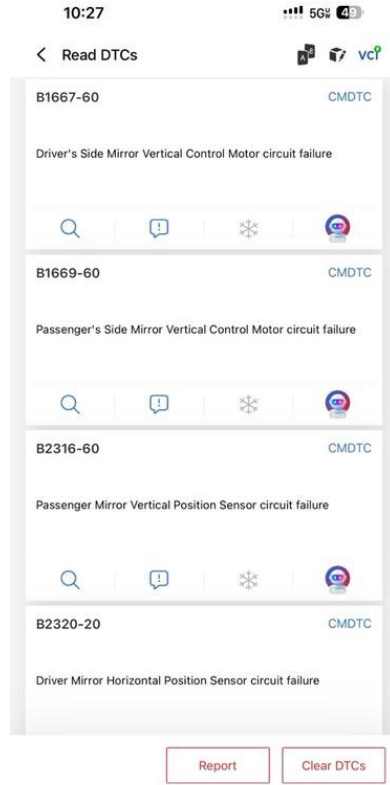


Photo 242

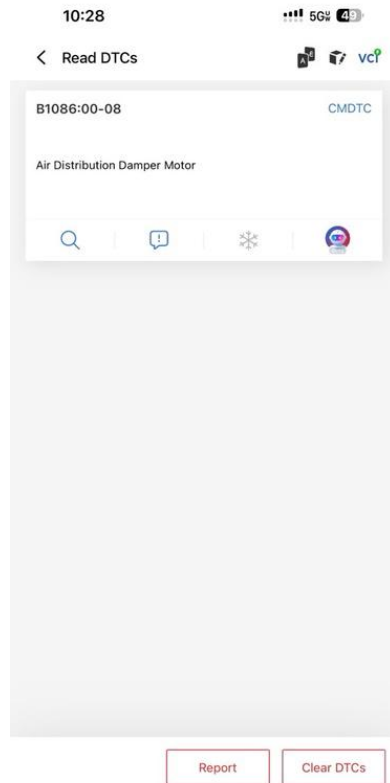


Photo 244

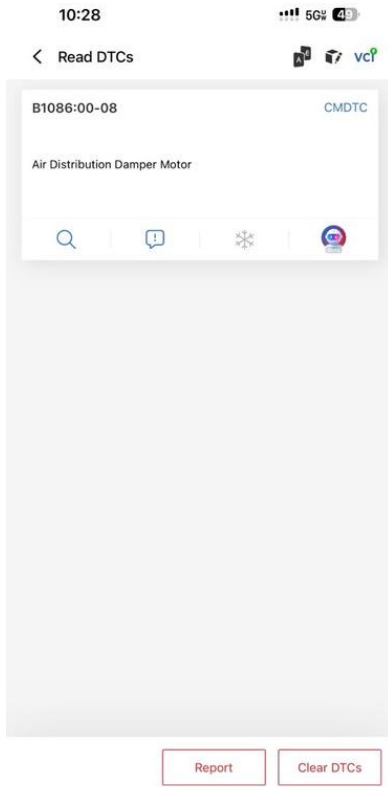


Photo 245