


# Peace of Mind Automotive Inspection Report.

**Joe Trejo Jr.**  
**210-557-0686**

Peace of Mind Automotive Inspection Report.  
Joe Trejo Jr.  
210-557-0686

**Complete**

Score	4 / 4 (100%)	Flagged items	0	Actions	0
<b>Site conducted</b>					Unanswered
<b>Customer name</b>					Luis LMJ auto motor sales
<b>Date / Time</b>					April 6th
<b>Payment method</b>					Invoice
<b>Inspection cost</b>					Fleet
<b>Vehicle Year / Make / Model / Color</b>					2012 Chevy Camaro
<b>VIN</b>					66757 last 5
					
Photo 1					
<b>license plate</b>					Dealer
<b>Mileage</b>					71654
<b>Color</b>					Orange

Interior Electrical Functions	2 / 2 (100%)
Horn function	Function correct
Interior lighting function	Function correct
Power lock function	Function correct
Power window function	Function correct
Power seat function	Function correct
Power Doors / lift gate function	N/A
Air conditioning below 60*	Yes
Heater above 90*	Yes
<b>Climate controls function</b>  There is an issue with the climate control buttons on the aftermarket, climate control, and radio set up. The fan speed does not adjust correctly and the temperature does not adjust correctly. However, you can increase the fan speed with the temperature switch, it seems as if the wiring may have been crossed up up on install installation of the aftermarket climate control system. The off switch for the climate control is also not functioning.	Issue present
Radio / display screen function	Function correct
Speakers performing correctly	Function correct
GPS function	N/A
Satellite radio function	N/A
12V power supply function	Function correct
Wireless charging function	N/A
Cooled seat function	N/A
Heated seat function	N/A
Remote entry function	Function correct

Vehicle does have four keys present

#### ADDITIONAL NOTES

Aside from the functionality of the climate controls the vehicle interior electrical functionality is correct

Interior Condition	0 / 0 (0%)
Seat belt function	Function correct
Front seat condition	Normal wear
Rear seat condition	Normal wear
Carpeting condition	Normal wear
Headliner condition	Normal wear
Door panel condition	Normal wear
Dashboard condition	Normal wear
Headliner condition	Normal wear
Center console condition	Normal wear
Glove compartment condition	Normal wear
Sun visor condition	Normal wear
Trunk / Cargo area condition	Normal wear
Trim pieces condition	Normal wear

**ADDITIONAL NOTES**

Normal wear to the interior as expected for the age and mileage on the vehicle. No water damage to the carpet or carpet installation. No rust on the bottom side of the dash. No evidence of flood damage present. No evidence of the vehicle being smoked inside. no severely damaged or missing panels. See all interior photos for evidence of current condition.



Photo 2



Photo 3



Photo 4



Photo 5



Photo 6



Photo 7



Photo 8

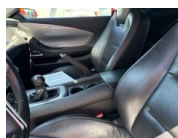


Photo 9



Photo 10



Photo 11



Photo 12



Photo 13



Photo 14



Photo 15



Photo 16



Photo 17



Photo 18



Photo 19



Photo 20



Photo 21



Photo 22



Photo 23



Photo 24



Photo 25



Photo 26



Photo 27



Photo 28



Photo 29



Photo 30



Photo 31



Photo 32



Photo 33



Photo 34

**Exterior Body / Structural Condition**

0 / 0 (0%)

**Paint depth on metal body panels**

matching paint depth on all exterior metal body panels aside from the left and right side quarter panels which have been repainted/touched up after factory. This is very difficult to notice with the naked eye. All exterior metal body panels are original to the vehicle. No structural damage presents nor any structural damage repair work done. No accident damage presents nor any accident damage repair work done . All window glass is original to the vehicle. Normal wear to the exterior as expected for the age and mileage including chips, scrapes, scratches and dings. Overall vehicle exterior is well-kept. See all exterior photos for evidence of current condition.



Photo 35



Photo 36



Photo 37



Photo 38



Photo 39

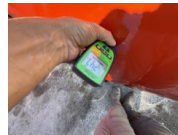


Photo 40



Photo 41



Photo 42



Photo 43



Photo 44



Photo 45



Photo 46



Photo 47

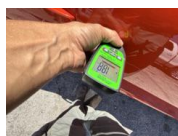


Photo 48



Photo 49



Photo 50



Photo 51



Photo 52



Photo 53



Photo 54



Photo 55



Photo 56



Photo 57



Photo 58



Photo 59



Photo 60



Photo 61



Photo 62



Photo 63



Photo 64



Photo 65



Photo 66



Photo 67

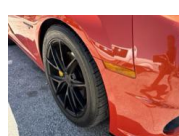


Photo 68

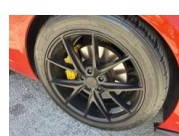


Photo 69



Photo 70



Photo 71

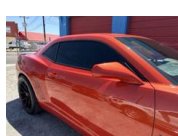


Photo 72



Photo 73



Photo 74

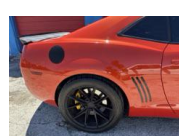


Photo 75



Photo 76



Photo 77

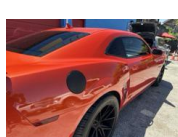


Photo 78



Photo 79



Photo 80



Photo 81



Photo 82



Photo 83



Photo 84



Photo 85



Photo 86



Photo 87



Photo 88



Photo 89



Photo 90



Photo 91



Photo 92



Photo 93



Photo 94



Photo 95



Photo 96



Photo 97



Photo 98



Photo 99



Photo 100



Photo 101



Photo 102



Photo 103



Photo 104



Photo 105



Photo 106



Photo 107



Photo 108



Photo 109



Photo 110



Photo 111



Photo 112



Photo 113



Photo 114



Photo 115

<b>Front bumper condition</b>	Normal wear
<b>Rear bumper condition</b>	Normal wear
<b>Hood panel condition</b>	Normal wear
<b>Driver side fender condition</b>	Normal wear
<b>Passenger side fender condition</b>	Normal wear
<b>Roof panel condition</b>	Normal wear
<b>Front driver side door Condition</b>	Normal wear
<b>Rear driver side door condition</b>	Normal wear
<b>Front passenger side door condition</b>	Normal wear
<b>Rear passenger side door condition</b>	Normal wear

<b>Driver side quarter panel condition</b>	Normal wear
<b>Passenger side quarter panel condition</b>	Normal wear
<b>Trunk panel condition</b>	Normal wear
<b>Truck Bed condition</b>	N/A
<b>Tail gate condition</b>	N/A
<b>Chassis / Frame condition</b>	Normal wear
<b>Frame rail condition</b>	Normal wear
<b>Subframe condition</b>	Normal wear
<b>Engine cradle condition</b>	Normal wear
<b>Skid / Dust cover condition</b>	Normal wear
<b>Collapse beam condition</b>	Normal wear
<b>Window trim condition</b>	Normal wear
<b>Weather stripping condition</b>	Normal wear
<b>Front windshield condition</b>	Normal wear
<b>Other window glass condition</b>	Normal wear
<b>Wheel / Hubcap condition</b>	Normal wear

**ADDITIONAL NOTES**

**Tire condition**

0 / 0 (0%)

**Front driver side tire**

75-100% remaining

All four tires are in healthy condition. Tires are matching on all four corners. Tires are offset. Tires have over 80% tread life remaining.



Photo 116



Photo 117



Photo 118

**Front passenger side tire**

75-100% remaining



Photo 119



Photo 120



Photo 121

**Rear driver side tire**

75-100% remaining



Photo 122



Photo 123

**Rear passenger side tire**

75-100% remaining



Photo 124



Photo 125

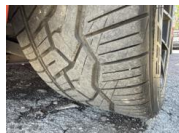


Photo 126

**Spare tire and equipment**

N/A

**Battery / charging system**

0 / 0 (0%)

**Battery date**

No date sticker

**Standing voltage**

12.8

**Loaded voltage**

15.3

Battery is accepting the charge from the alternator and the alternator charge output is correct



Photo 127

**Engine Testing / Condition**

2 / 2 (100%)

**Internal engine inspection w/ borescope camera**

Engine clean internally, no gunk or sludge presents. Proper signs of maintenance present. Block test passed, no internal combustion leak out. Coolant mixture correct and cooling system functionality is healthy. All external engine accessories in good working. No leaks or seepage from anywhere on the engine. External drive belts in decent condition. Currently no concern in mechanical issues present in relation to the engine or related accessories.



Photo 128



Photo 129



Photo 130



Photo 131



Photo 132



Photo 133



Photo 134



Photo 135



Photo 136



Photo 137



Photo 138



Photo 139



Photo 140



Photo 141



Photo 142



Photo 143



Photo 144



Photo 145



Photo 146



Photo 147












Photo 148



Photo 149

<b>Engine block test</b>	Pass
<b>Coolant mixture test</b>	Pass
<b>Air filter condition</b>	Normal wear
<b>Engine oil condition</b>	Normal wear
<b>Engine oil level</b>	Healthy
<b>Engine oil leaks</b>	None
<b>Coolant level</b>	Healthy
<b>Coolant hoses</b>	Healthy
<b>Radiator condition / function</b>	Healthy
<b>Engine operating temperature</b>	Healthy
<b>Cooling fan function</b>	Healthy

<b>Drive belt condition</b>	Healthy
<b>Abnormal engine knock</b>	None
<b>Abnormal valve train rattle</b>	None
<b>Abnormal bearing noises</b>	None
<b>Engine gunk / sludge</b>	None
<b>Fuel tank</b>	Healthy
<b>Fuel injectors / lines</b>	Healthy
<b>Valve cover gaskets</b>	Healthy
<b>Intake manifold gasket</b>	Healthy
<b>Cylinder head gasket</b>	Healthy
<b>Oil pan gasket</b>	Healthy
<b>Timing cover gasket</b>	Healthy
<b>Rear main seal</b>	Healthy
<b>Timing belt / components</b>	Healthy
<b>Exhaust manifold</b>	Healthy
<b>External engine accessories</b>	Healthy

<b>Transmission / Differentials</b>	0 / 0 (0%)
<b>Transmission fluid level</b>	Healthy
<b>Transmission fluid condition</b>	Healthy
<b>Transmission fluid leaks</b>	None
<p>No transmission fluid leaks from the transmission casing or the transmission pan area. The tile shaft seal is free of any fluid leaks. The driveshaft is in healthy condition. Shift transitions out on the road are correct across the board. No fluid leak out from the rear differential.</p>	
<div style="display: flex; justify-content: space-around;"> <div style="text-align: center;">  <p>Photo 150</p> </div> <div style="text-align: center;">  <p>Photo 151</p> </div> <div style="text-align: center;">  <p>Photo 152</p> </div> <div style="text-align: center;">  <p>Photo 153</p> </div> <div style="text-align: center;">  <p>Photo 154</p> </div> </div>	
<b>Transmission cooler / lines</b>	Healthy
<b>Front differential condition</b>	N/A
<b>Center differential condition</b>	N/A
<b>Rear differential condition</b>	Healthy
<div style="display: flex; justify-content: space-around;"> <div style="text-align: center;">  <p>Photo 155</p> </div> <div style="text-align: center;">  <p>Photo 156</p> </div> <div style="text-align: center;">  <p>Photo 157</p> </div> <div style="text-align: center;">  <p>Photo 158</p> </div> </div>	
<b>Differential leaks</b>	None
<b>4x4 function / engagement</b>	N/A
<b>Clutch engagement</b>	Healthy
<b>Gear engagement</b>	Healthy
<b>Shift transitions</b>	Healthy
<b>Drive shaft condition</b>	Healthy

**Suspension condition** 0 / 0 (0%)

**Front shocks / struts**

Healthy

Normal fatigue notice to the suspension components. All of the suspension components seem to be original. None of the suspension components are blown out and due form the replacement. The No excessive surface rust on the exposed metal. No abnormal noise or feedback from the suspension while out on the road. All of the rubber in relation to the mounts, joints and bushings has decent texture.



Photo 159



Photo 160



Photo 161



Photo 162



Photo 163



Photo 164



Photo 165



Photo 166



Photo 167

**Rear shocks / struts**

Healthy



Photo 168



Photo 169



Photo 170



Photo 171



Photo 172



Photo 173

**Control arms upper**

Healthy

**Control arms lower**

Healthy

**Ball joints**

Healthy

**Bushings**

Healthy

**Torsion bars**

Healthy

**Coilover function**

N/A

**Air ride function**

N/A

**Airbag condition**





N/A

**Abnormal rust / corrosion to metals**

None

**Deterioration of rubbers**

None

<b>Braking system condition</b>	0 / 0 (0%)
<b>Brake fluid condition</b>	Healthy
<b>Brake fluid level</b>	Healthy
<b>Brake fluid leaks</b>	None
<b>Moisture content in brake fluid</b>	None
<b>Brake lines</b>	Healthy
<b>Brake calipers front</b>	Healthy
<b>Brake calipers rear</b>	Healthy
<b>Brake drums rear</b>	N/A
<b>Brake rotors front</b>	Healthy
<b>Brake rotors rear</b>	Healthy
<b>Front brake pad life remaining</b>	75-100% remaining
<p>Right about 75% brake pad life remaining on the front brake system and right about 80% brake pad life remaining on the rear brake system</p>	
 <p>Photo 174</p>	 <p>Photo 175</p>
<b>Rear brake pad life remaining</b>	75-100% remaining
 <p>Photo 176</p>	 <p>Photo 177</p>
<b>E-brake function</b>	Healthy

Steering system condition	0 / 0 (0%)
Steering wheel	Healthy
Steering column	Healthy
Steering knuckle / shaft	Healthy
Steering box	N/A
Rack and pinion condition	Healthy
Inner tie rods	Healthy
outer tie rods	Healthy
Rack boots	Healthy
Power steering pump	Healthy
power steering lines	Healthy
Power steering leaks	None
Power steering fluid level	Healthy
Electric steering motor	N/A
Abnormal play / slack in steering	None
Steering alignment on road	Healthy

### Computer diagnostic scan

0 / 0 (0%)

#### Engine control module

Healthy

All of the main control modules on the vehicle were free of any live/active diagnostic fault codes. All live feed diagnostic testing was successfully passed. At the time of the inspection, there were no active warning lights present on the vehicle aside from the fault codes in relation to the aftermarket headlights / turn signal.

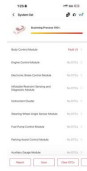


Photo 178



Photo 179

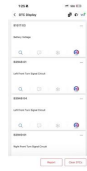


Photo 180



Photo 181

#### Transmission control module

Healthy

#### Anti lock brake (ABS) module

Healthy

#### SRS module

Healthy

#### hybrid control module

N/A

#### Suspension control module

N/A

**Vehicle road test**

0 / 0 (0%)

**Vehicle road test comments / concerns**

All of the blinkers are functioning correctly, however when engaging the left and right side blinker after a couple of blinks, there is a error message displayed saying that there is a fault with the blinker on both the left and right hand side. This is in relation to the aftermarket headlights and turn signals that are installed on the vehicle. The lighting control module is not communicating correctly with the aftermarket lighting.



Photo 182

**Value of vehicle / Diminished value due to repairs or current damage**

0 / 0 (0%)

No diminished value due to no structural damage presents nor any structural damage repair work done

---

Media summary



Photo 1



Photo 2



Photo 3



Photo 4



Photo 5



Photo 6



Photo 7



Photo 8



Photo 9



Photo 10



Photo 11



Photo 12



Photo 13



Photo 14



Photo 15



Photo 16



Photo 17



Photo 18



Photo 19



Photo 20



Photo 21



Photo 22



Photo 23

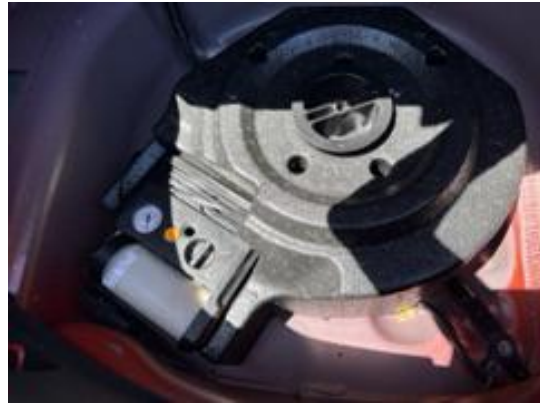


Photo 24



Photo 25



Photo 26



Photo 27



Photo 28



Photo 29



Photo 30



Photo 31



Photo 32



Photo 33



Photo 34



Photo 35



Photo 36



Photo 37



Photo 38



Photo 39



Photo 40



Photo 41



Photo 42



Photo 43



Photo 44



Photo 45



Photo 46



Photo 47



Photo 48



Photo 49



Photo 50



Photo 51



Photo 52



Photo 53



Photo 54



Photo 55



Photo 56



Photo 57



Photo 58



Photo 59



Photo 60



Photo 61



Photo 62



Photo 63



Photo 64



Photo 65



Photo 66



Photo 67



Photo 68



Photo 69



Photo 70



Photo 71



Photo 72



Photo 73



Photo 74



Photo 75



Photo 76



Photo 77

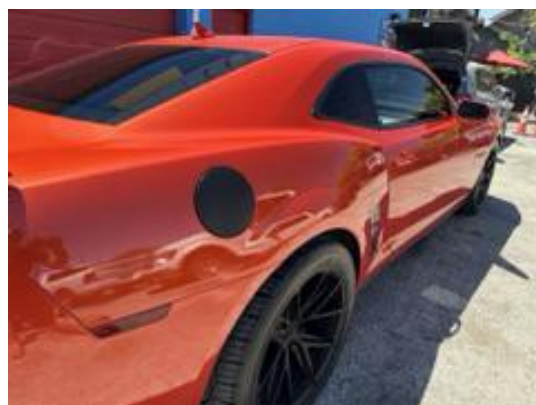


Photo 78



Photo 79



Photo 80



Photo 81



Photo 82



Photo 83

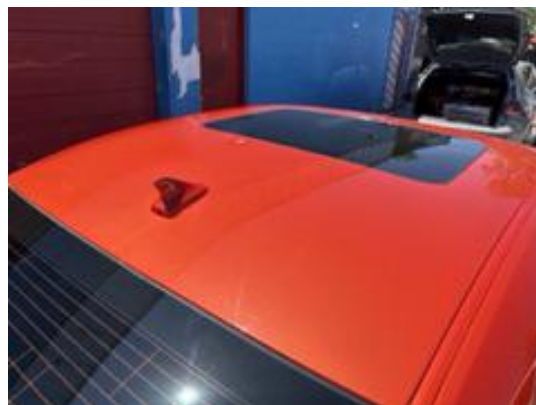


Photo 84



Photo 85



Photo 86



Photo 87



Photo 88



Photo 89



Photo 90



Photo 91



Photo 92



Photo 93



Photo 94



Photo 95



Photo 96



Photo 97



Photo 98



Photo 99



Photo 100



Photo 101



Photo 102



Photo 103



Photo 104



Photo 105



Photo 106



Photo 107



Photo 108



Photo 109



Photo 110



Photo 111



Photo 112



Photo 113



Photo 114



Photo 115



Photo 116



Photo 117

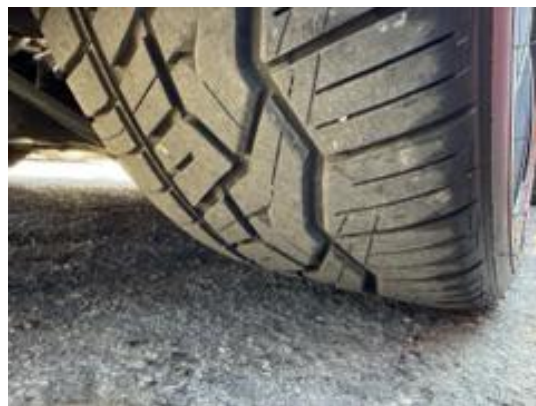


Photo 118



Photo 119



Photo 120



Photo 121



Photo 122



Photo 123



Photo 124



Photo 125



Photo 126



Photo 127



Photo 128



Photo 129



Photo 130



Photo 131



Photo 132



Photo 133



Photo 134



Photo 135



Photo 136



Photo 137



Photo 138



Photo 139



Photo 140



Photo 141



Photo 142



Photo 143



Photo 144



Photo 145



Photo 146



Photo 147



Photo 148



Photo 149



Photo 150



Photo 151



Photo 152



Photo 153



Photo 154



Photo 155



Photo 156



Photo 157



Photo 158



Photo 159



Photo 160



Photo 161



Photo 162



Photo 163



Photo 164



Photo 165



Photo 166



Photo 167



Photo 168



Photo 169



Photo 170



Photo 171



Photo 172



Photo 173



Photo 174



Photo 175



Photo 176



Photo 177

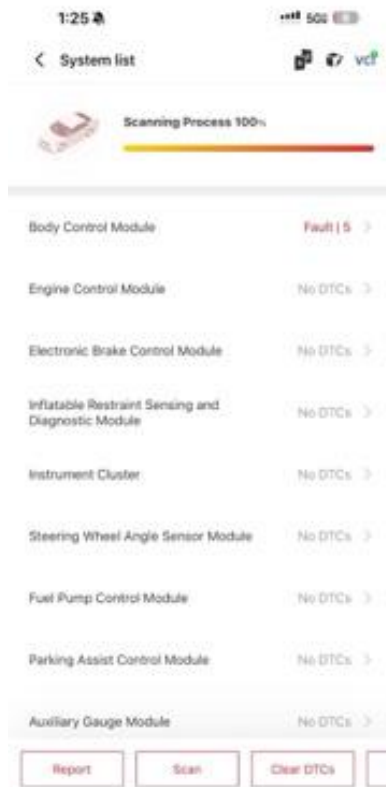


Photo 178

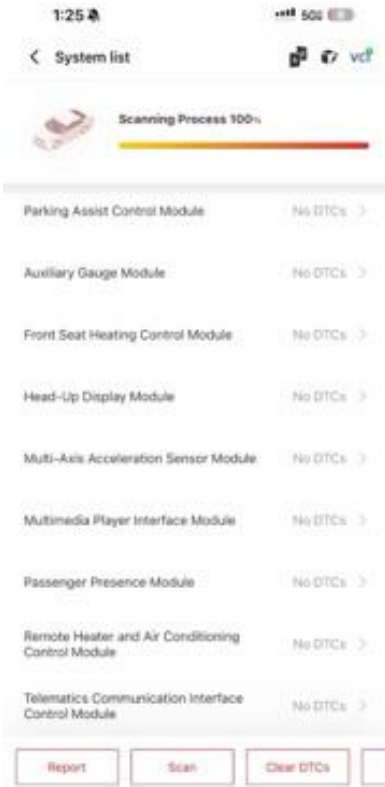


Photo 179

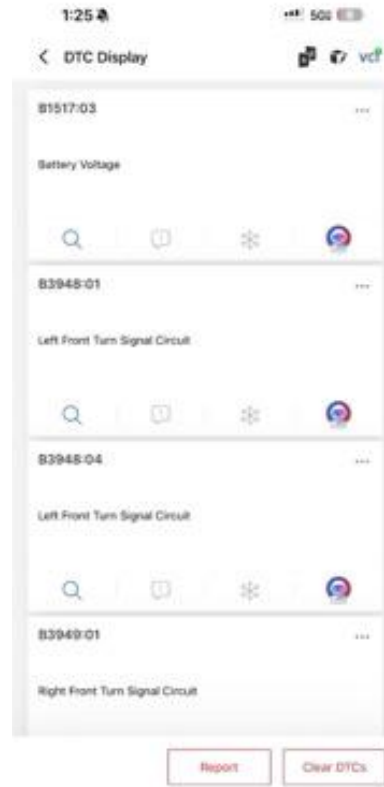


Photo 180

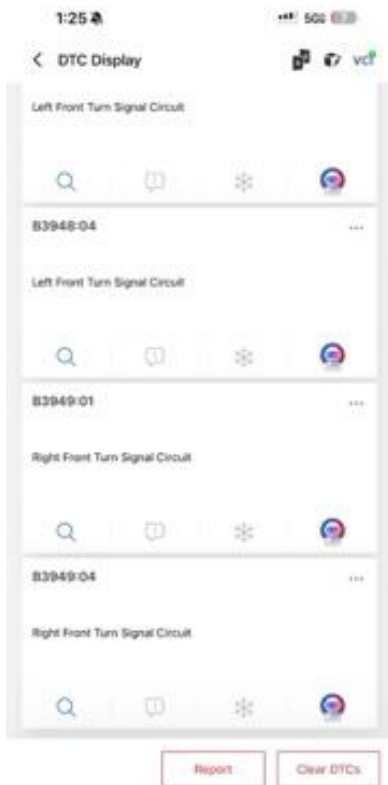


Photo 181



Photo 182