



Peace of Mind Automotive Inspection Report.

Joe Trejo Jr.
210-557-0686

Complete


Score	4 / 4 (100%)	Flagged items	0	Actions	0
Site conducted					Unanswered
Customer name					Luis LMJ auto motor sales
Date / Time					April 6th
Payment method					Invoice
Inspection cost					Fleet
Vehicle Year / Make / Model / Color					2012 ford f150 king ranch
VIN					10106 last 5
					
license plate					Dealer
Mileage					154009
Color					White

Photo 1

Interior Electrical Functions	2 / 2 (100%)
Horn function	Function correct
Interior lighting function	Function correct
Power lock function	Function correct
Power window function	Function correct
Power seat function	Function correct
Power Doors / lift gate function	N/A
Air conditioning below 60*	Yes
Heater above 90*	Yes
Climate controls function	Function correct
Radio / display screen function	Function correct
Speakers performing correctly	Function correct
GPS function	Function correct
Satellite radio function	Function correct
12V power supply function	Function correct
Wireless charging function	N/A
Cooled seat function	Function correct
Heated seat function	Function correct
Remote entry function	Function correct

ADDITIONAL NOTES

Vehicle interior electrical functionality is correct across the board, no inoperable functions.

Interior Condition	
Seat belt function	Function correct
Front seat condition	Normal wear
Rear seat condition	Normal wear
Carpeting condition	Normal wear
Headliner condition	Normal wear
Door panel condition	Normal wear
Dashboard condition	Normal wear
Headliner condition	Normal wear
Center console condition	Normal wear
Glove compartment condition	Normal wear
Sun visor condition	Normal wear
Trunk / Cargo area condition	Normal wear
Trim pieces condition	Normal wear




Photo 2




Photo 3




Photo 4

ADDITIONAL NOTES

Normal wear to the interior as expected for the age and mileage on the vehicle. No water damage to the carpet or carpet installation. No rust on the bottom side of the dash. No evidence of flood damage present. No evidence of the vehicle being smoked inside. no severely damaged or missing panels. See all interior photos for evidence of current condition.



Photo 5



Photo 6



Photo 7



Photo 8



Photo 9



Photo 10

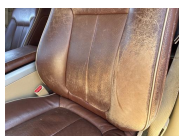


Photo 11



Photo 12



Photo 13



Photo 14



Photo 15



Photo 16



Photo 17



Photo 18



Photo 19



Photo 20



Photo 21



Photo 22



Photo 23



Photo 24



Photo 25



Photo 26



Photo 27



Photo 28



Photo 29

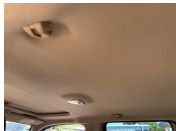


Photo 30



Photo 31



Photo 32



Photo 33



Photo 34



Photo 35



Photo 36



Photo 37



Photo 38



Photo 39



Photo 40



Photo 41



Photo 42



Photo 43



Photo 44



Photo 45



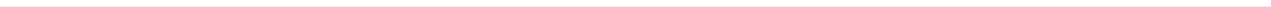
Photo 46



Photo 47



Photo 48



Exterior Body / Structural Condition

Paint depth on metal body panels

Factory, matching paint depth on all exterior metal body panels. All exterior metal body panels are original to the vehicle. No structural damage presents nor any structural damage repair work done. No accident damage presents nor any accident damage repair work done. All window glass is original to the vehicle. Normal wear to the exterior as expected for the age and mileage including chips, scrapes, scratches and dings. Overall vehicle exterior is well-kept. See all exterior photos for evidence of current condition.



Photo 49



Photo 50



Photo 51



Photo 52



Photo 53



Photo 54



Photo 55



Photo 56



Photo 57



Photo 58



Photo 59



Photo 60



Photo 61



Photo 62



Photo 63



Photo 64



Photo 65



Photo 66



Photo 67



Photo 68



Photo 69



Photo 70



Photo 71



Photo 72



Photo 73



Photo 74



Photo 75



Photo 76



Photo 77



Photo 78



Photo 79



Photo 80



Photo 81

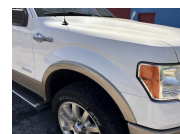


Photo 82



Photo 83



Photo 84



Photo 85



Photo 86



Photo 87

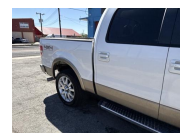


Photo 88



Photo 89



Photo 90



Photo 91



Photo 92



Photo 93



Photo 94



Photo 95



Photo 96



Photo 97



Photo 98



Photo 99



Photo 100



Photo 101



Photo 102



Photo 103



Photo 104



Photo 105



Photo 106



Photo 107



Photo 108



Photo 109



Photo 110



Photo 111



Photo 112



Photo 113



Photo 114



Photo 115



Photo 116



Photo 117



Photo 118



Photo 119



Photo 120



Photo 121



Photo 122



Photo 123



Photo 124



Photo 125



Photo 126



Photo 127



Photo 128



Photo 129

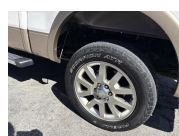


Photo 130



Photo 131



Photo 132



Photo 133



Photo 134



Photo 135



Photo 136

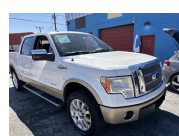


Photo 137

Front bumper condition

Normal wear

Rear bumper condition

Normal wear

Hood panel condition

Normal wear

Driver side fender condition

Normal wear

Passenger side fender condition

Normal wear

Roof panel condition

Normal wear

Front driver side door Condition

Normal wear

Rear driver side door condition

Normal wear

Front passenger side door condition	Normal wear
Rear passenger side door condition	Normal wear
Driver side quarter panel condition	N/A
Passenger side quarter panel condition	N/A
Trunk panel condition	N/A
Truck Bed condition	Normal wear
Tail gate condition	Normal wear
Chassis / Frame condition	Normal wear
Frame rail condition	Normal wear
Subframe condition	Normal wear
Engine cradle condition	Normal wear
Skid / Dust cover condition	Normal wear
Collapse beam condition	Normal wear
Window trim condition	Normal wear
Weather stripping condition	Normal wear
Front windshield condition	Normal wear
Other window glass condition	Normal wear
Wheel / Hubcap condition	Normal wear

ADDITIONAL NOTES

Tire condition

Front driver side tire

25-50% remaining

All four tires are aged and dated from 2018. All four tires will soon be due for a replacement although one of the tires is completely bald on the edge and should be replaced immediately.



Photo 138



Photo 139



Photo 140

Front passenger side tire

25-50% remaining



Photo 141



Photo 142

Rear driver side tire

25-50% remaining



Photo 143



Photo 144



Photo 145

Rear passenger side tire

0-25 % remaining



Photo 146



Photo 147



Photo 148

Spare tire and equipment

Spare and tools present

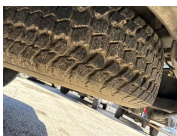


Photo 149

Battery / charging system

Battery date Na

Standing voltage 12.8

Loaded voltage 14.58

Battery is accepting the charge from the alternator and the alternator charge output is correct



Photo 150

Engine Testing / Condition

2 / 2 (100%)

Internal engine inspection w/ borescope camera

Engine clean internally, no gunk or sludge presents. Proper signs of maintenance present. Block test passed, no internal combustion leak out. Coolant mixture correct and cooling system functionality is healthy. All external engine accessories in good working. No leaks or seepage from anywhere on the engine. External drive belts in decent condition. Currently no concern in mechanical issues present in relation to the engine or related accessories.



Photo 151



Photo 152



Photo 153



Photo 154



Photo 155



Photo 156



Photo 157



Photo 158



Photo 159



Photo 160



Photo 161



Photo 162



Photo 163



Photo 164



Photo 165



Photo 166

Engine block test	Pass
Coolant mixture test	Pass
Air filter condition	Normal wear
Engine oil condition	Normal wear
Engine oil level	Healthy
Engine oil leaks	None
Coolant level	Healthy
Coolant hoses	Healthy
Radiator condition / function	Healthy
Engine operating temperature	Healthy
Cooling fan function	Healthy
Drive belt condition	Healthy

Abnormal engine knock	None
Abnormal valve train rattle	None
Abnormal bearing noises	None
Engine gunk / sludge	None
Fuel tank	Healthy
Fuel injectors / lines	Healthy
Valve cover gaskets	Healthy
Intake manifold gasket	Healthy
Cylinder head gasket	Healthy
Oil pan gasket	Healthy
<p>There was a very small amount of oil residue noticed around the backside of the oil pan gasket area, a future repair to expect will likely be resealing of the oil pan gasket.</p>	
Timing cover gasket	Healthy
Rear main seal	Healthy
Timing belt / components	Healthy
Exhaust manifold	Healthy
External engine accessories	Healthy

Transmission / Differentials

Transmission fluid level	Healthy
Transmission fluid condition	Healthy
Transmission fluid leaks	None

No transmission fluid leaks from the transmission casing or the transmission pan area. Detailed shaft seal is free of any fluid leaks. The driveshaft is in healthy condition. Shift transitions out on the road were correct across the board.



Photo 167



Photo 168



Photo 169



Photo 170

Transmission cooler / lines	Healthy
------------------------------------	---------

Front differential condition	Issue present
-------------------------------------	---------------

There was some fluid seepage notice from the front differential and front axle area. Seemed as if the input shaft seal on the front differential has started to leak as well as the passenger side axle seal.



Photo 171



Photo 172

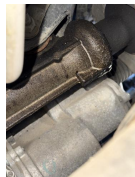


Photo 173



Photo 174

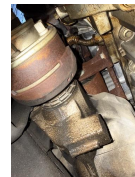


Photo 175

Center differential condition	Healthy
--------------------------------------	---------

Rear differential condition	Healthy
------------------------------------	---------



Photo 176



Photo 177



Photo 178



Photo 179

Differential leaks	None
---------------------------	------

4x4 function / engagement	Healthy
----------------------------------	---------

Clutch engagement	Healthy
--------------------------	---------

Gear engagement	Healthy
------------------------	---------

Shift transitions	Healthy
--------------------------	---------

Drive shaft condition	Healthy
------------------------------	---------

Suspension condition

Front shocks / struts

Healthy

Normal fatigue notice to the suspension components. All of the suspension components seem to be original. None of the suspension components are blown out and due form the replacement. The No excessive surface rust on the exposed metal. No abnormal noise or feedback from the suspension while out on the road. All of the rubber in relation to the mounts, joints and bushings has decent texture.



Photo 180



Photo 181



Photo 182



Photo 183



Photo 184



Photo 185



Photo 186



Photo 187



Photo 188

Rear shocks / struts

Healthy



Photo 189



Photo 190



Photo 191



Photo 192



Photo 193



Photo 194



Photo 195

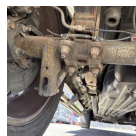


Photo 196



Photo 197

Control arms upper

Healthy

Control arms lower

Healthy

Ball joints

Healthy

Bushings

Healthy

Torsion bars

Healthy

Coilover function

N/A

Air ride function

N/A

Airbag condition





N/A

Abnormal rust / corrosion to metals

None

Deterioration of rubbers

None

Braking system condition	
Brake fluid condition	Healthy
Brake fluid level	Healthy
Brake fluid leaks	None
Moisture content in brake fluid	None
Brake lines	Healthy
Brake calipers front	Healthy
Brake calipers rear	Healthy
Brake drums rear	N/A
Brake rotors front	Healthy
Brake rotors rear	Healthy
Front brake pad life remaining Right around 35% brake pad life remaining   Photo 198 Photo 199	25-50% remaining
Rear brake pad life remaining Right about 70% brake pad life remaining   Photo 200 Photo 201	50-75% remaining
E-brake function	Healthy

Steering system condition	
Steering wheel	Healthy
Steering column	Healthy
Steering knuckle / shaft	Healthy
Steering box	N/A
Rack and pinion condition	Healthy
Inner tie rods	Healthy
outer tie rods	Healthy
Rack boots	Healthy
Power steering pump	N/A
power steering lines	N/A
Power steering leaks	N/A
Power steering fluid level	N/A
Electric steering motor	Healthy
Abnormal play / slack in steering	None
Steering alignment on road	Healthy

Computer diagnostic scan

Engine control module

Healthy

All of the main control modules on the vehicle were free of any live/active diagnostic fault codes. At the time of the inspection there were no active warning lights present. All of the live feed diagnostic test testing was successfully passed.

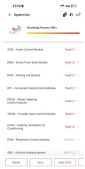


Photo 202



Photo 203



Photo 204



Photo 205



Photo 206



Photo 207



Photo 208



Photo 209

Transmission control module

Healthy

Anti lock brake (ABS) module

Healthy

SRS module

Healthy

hybrid control module

N/A

Suspension control module

N/A

Vehicle road test

Vehicle road test comments / concerns

Normal drive characteristics present as expected for the age and mileage on this specific vehicle. No drive abnormalities or issues present.

Value of vehicle / Diminished value due to repairs or current damage

No diminished value due to no structural damage presence nor any structural damage repair work done

Media summary

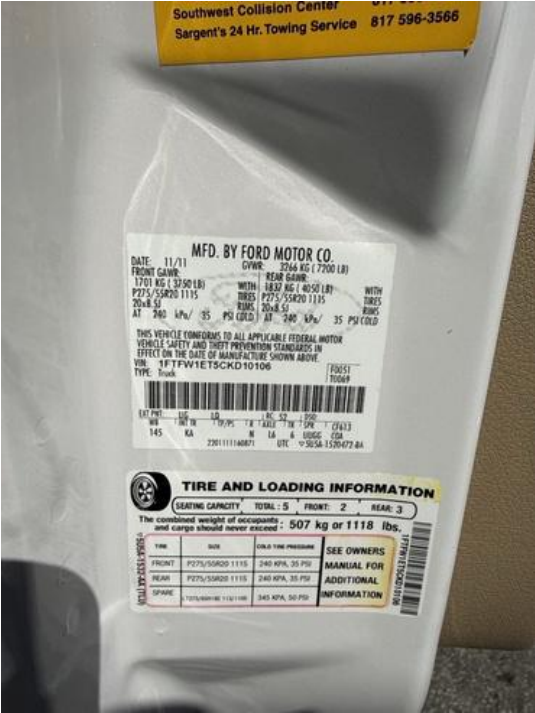


Photo 1



Photo 2



Photo 3



Photo 4



Photo 5



Photo 6



Photo 7



Photo 8



Photo 9



Photo 10



Photo 11



Photo 12



Photo 13



Photo 14



Photo 15



Photo 16



Photo 17



Photo 18



Photo 19



Photo 20



Photo 21



Photo 22



Photo 23



Photo 24



Photo 25



Photo 26



Photo 27



Photo 28



Photo 29



Photo 30



Photo 31



Photo 32



Photo 33



Photo 34



Photo 35



Photo 36



Photo 37



Photo 38



Photo 39



Photo 40



Photo 41



Photo 42



Photo 43



Photo 44



Photo 45



Photo 46



Photo 47



Photo 48



Photo 49



Photo 50



Photo 51



Photo 52



Photo 53



Photo 54



Photo 55



Photo 56



Photo 57



Photo 58



Photo 59



Photo 60



Photo 61



Photo 62



Photo 63



Photo 64



Photo 65



Photo 66



Photo 67



Photo 68



Photo 69



Photo 70



Photo 71



Photo 72



Photo 73



Photo 74



Photo 75



Photo 76



Photo 77



Photo 78



Photo 79



Photo 80



Photo 81



Photo 82



Photo 83



Photo 84



Photo 85



Photo 86



Photo 87



Photo 88



Photo 89



Photo 90



Photo 91



Photo 92



Photo 93



Photo 94



Photo 95



Photo 96



Photo 97



Photo 98



Photo 99



Photo 100



Photo 101



Photo 102



Photo 103



Photo 104



Photo 105



Photo 106



Photo 107



Photo 108



Photo 109



Photo 110



Photo 111



Photo 112



Photo 113



Photo 114



Photo 115



Photo 116



Photo 117



Photo 118



Photo 119



Photo 120



Photo 121



Photo 122



Photo 123



Photo 124



Photo 125



Photo 126



Photo 127



Photo 128



Photo 129



Photo 130



Photo 131



Photo 132



Photo 133



Photo 134



Photo 135



Photo 136



Photo 137



Photo 138



Photo 139



Photo 140



Photo 141



Photo 142



Photo 143



Photo 144



Photo 145



Photo 146



Photo 147



Photo 148



Photo 149



Photo 150



Photo 151



Photo 152



Photo 153



Photo 154



Photo 155



Photo 156



Photo 157



Photo 158



Photo 159



Photo 160



Photo 161



Photo 162



Photo 163



Photo 164



Photo 165

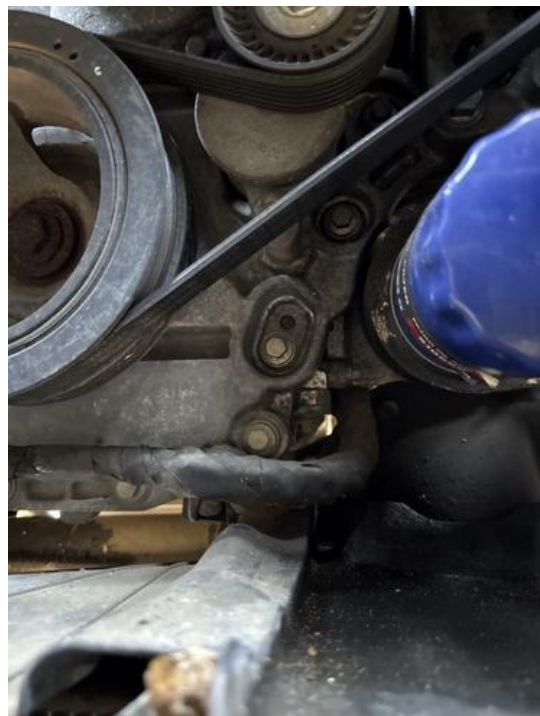


Photo 166



Photo 167



Photo 168



Photo 169



Photo 170



Photo 171



Photo 172



Photo 173

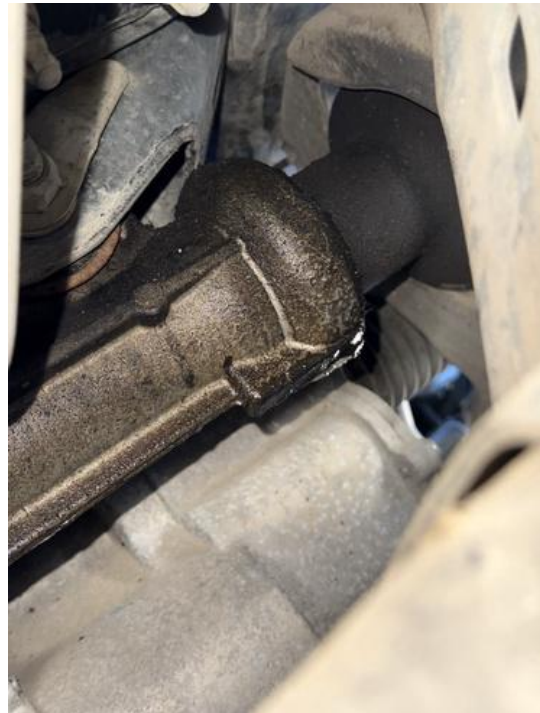


Photo 174



Photo 175



Photo 176



Photo 177



Photo 178



Photo 179



Photo 180



Photo 181



Photo 182



Photo 183



Photo 184



Photo 185



Photo 186



Photo 187



Photo 188



Photo 189



Photo 190



Photo 191



Photo 192



Photo 193



Photo 194

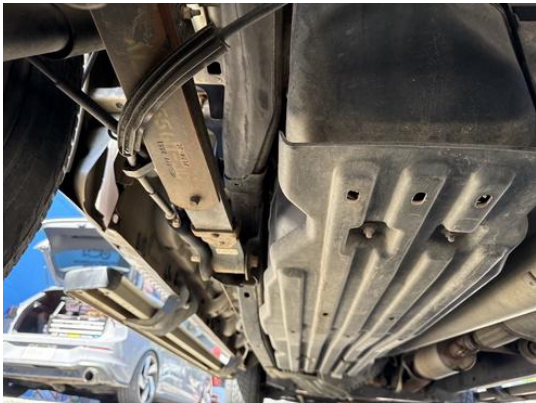


Photo 195



Photo 196



Photo 197



Photo 198



Photo 199



Photo 200



Photo 201

11:13 5G 20

< System list vcf

Scanning Process 100%

ACM - Audio Control Module	Fault 1 >
DSM - Driver Front Seat Module	Fault 3 >
PAM - Parking Aid Module	Fault 1 >
IPC - Instrument Panel Control Module	Fault 1 >
PSCM - Power Steering Control Module	Fault 1 >
TCCM - Transfer Case Control Module	Fault 1 >
HVAC - Heating Ventilation Air Conditioning	Fault 2 >
PCM - Powertrain Control Module	No DTCs >
ABS - Antilock braking system	No DTCs >

Report Scan Clear DTCs

Photo 202

11:13 5G 19

< System list vcf

Scanning Process 100%

ABS - Antilock braking system	No DTCs >
RCM - Restraint Control Module	No DTCs >
DCSM - Driver/Dual Climate-Control Seat Module	No DTCs >
APIM - Accessory Protocol Interface Module	No DTCs >
OCSM - Occupant Classification System Module	No DTCs >
FCIM - Front Controls Interface Module	No DTCs >
SCCM - Steering Column Control Module	No DTCs >
DSP - (Audio) Digital Signal Processing Module	No DTCs >
TPM - Tire Pressure Monitor	No DTCs >

Report Scan Clear DTCs

Photo 203

11:13 5G 19

< System list vcf

Scanning Process 100%

DCSM - Driver/Dual Climate-Control Seat Module	No DTCs >
APIM - Accessory Protocol Interface Module	No DTCs >
OCSM - Occupant Classification System Module	No DTCs >
FCIM - Front Controls Interface Module	No DTCs >
SCCM - Steering Column Control Module	No DTCs >
DSP - (Audio) Digital Signal Processing Module	No DTCs >
TPM - Tire Pressure Monitor	No DTCs >
TBC - Trailer Brake Control Module	No DTCs >
BCM - Body Control Module	No DTCs >

Report Scan Clear DTCs

Photo 204

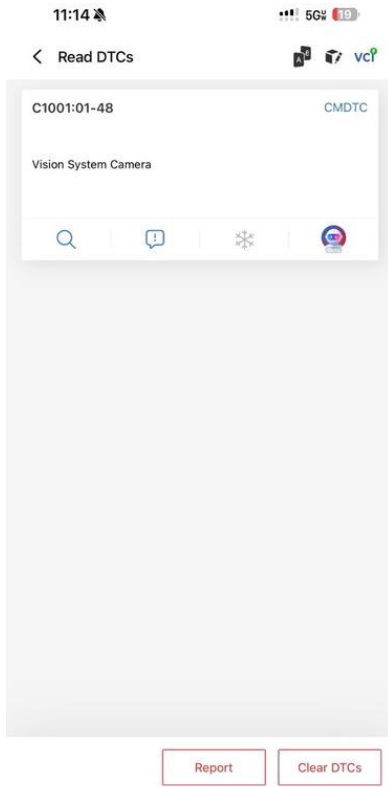


Photo 205

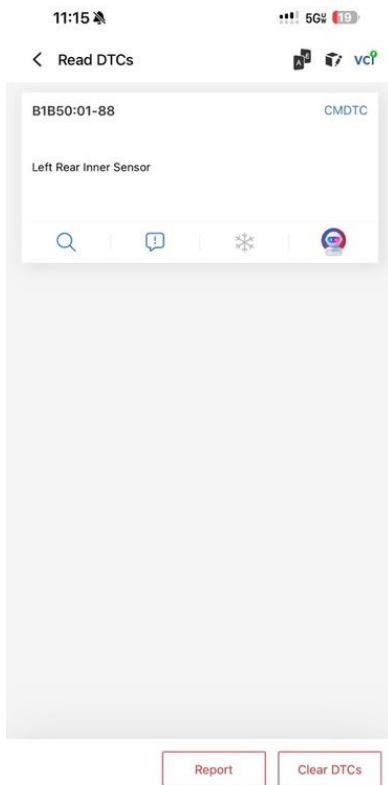


Photo 207

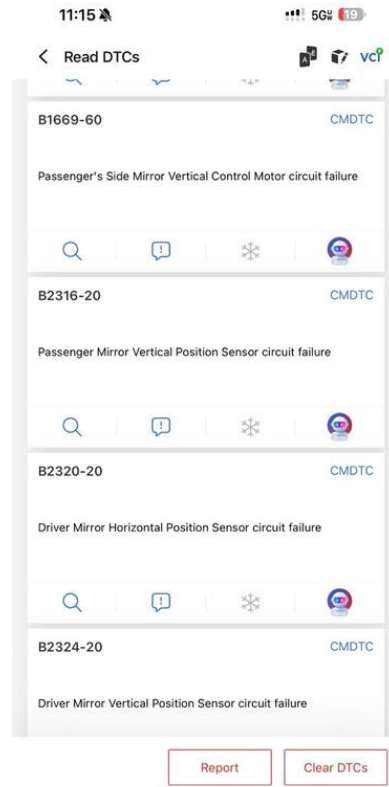


Photo 206

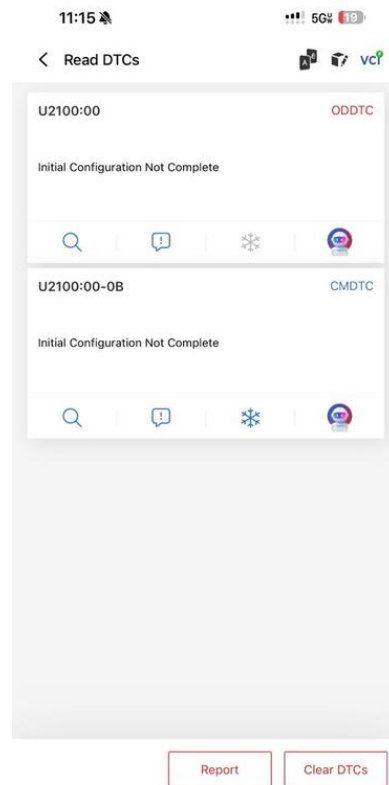


Photo 208

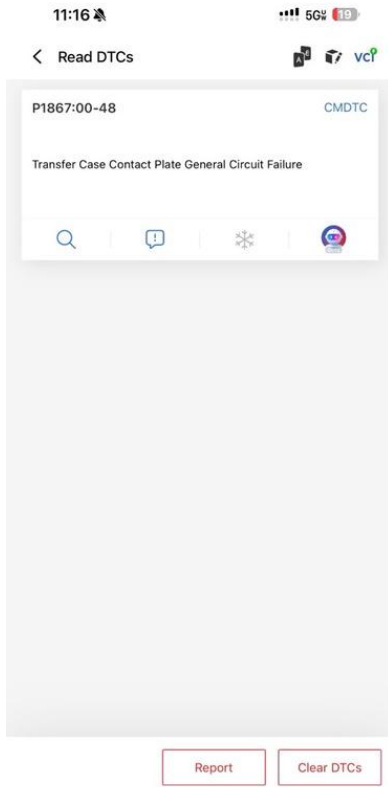


Photo 209