




## Peace of Mind Automotive Inspection Report.

**Joe Trejo Jr.**  
**210-557-0686**

**Complete**

Score	4 / 4 (100%)	Flagged items	0	Actions	0
Site conducted		Unanswered			
Customer name		Luis Imj auto motor sales			
Date / Time		Dec 26th			
Payment method		Invoice			
Inspection cost		199			
Vehicle Year / Make / Model / Color		2012 Lincoln navigator			
VIN		02279 last 5			
					
Photo 1					
license plate		Dealer			
Mileage		145020			
Color		White			

Interior Electrical Functions		2 / 2 (100%)
Horn function		Function correct
Interior lighting function		Function correct
Power lock function		Function correct
Power window function		Issue present
The sunroof is not operating, you can hear the motor trying to engage however, there is no movement from the mechanism itself.		
Power seat function		Function correct
Power Doors / lift gate function		Function correct
Air conditioning below 60*		Yes
Heater above 90*		Yes
Climate controls function		Function correct
Radio / display screen function		Function correct
Speakers performing correctly		Function correct
GPS function		Function correct
Satellite radio function		Function correct
12V power supply function		Function correct
Wireless charging function		N/A
Cooled seat function		Function correct
Heated seat function		Function correct
Remote entry function		Function correct

#### ADDITIONAL NOTES

Aside from the functionality of the sunroof all of the other vehicle interior electrical functionality is correct across-the-board.

Interior Condition	
Seat belt function	Function correct
Front seat condition	Normal wear
Rear seat condition	Normal wear
Carpeting condition	Normal wear
Headliner condition	Normal wear
Door panel condition	Normal wear
Dashboard condition	Normal wear
Headliner condition	Normal wear
Center console condition	Normal wear
Glove compartment condition	Normal wear
Sun visor condition	Normal wear
Trunk / Cargo area condition	Normal wear
Trim pieces condition	Normal wear

### ADDITIONAL NOTES


Normal wear to the interior as expected for the age and mileage on the vehicle. No water damage to the carpet or carpet installation. No rust on the bottom side of the dash. No evidence of flood damage present. No evidence of the vehicle being smoked inside. no severely damaged or missing panels. See all interior photos for evidence of current condition. 



Photo 2



Photo 3



Photo 4



Photo 5



Photo 6



Photo 7

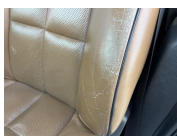


Photo 8



Photo 9



Photo 10



Photo 11



Photo 12



Photo 13



Photo 14



Photo 15

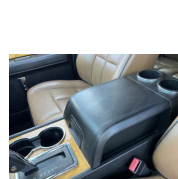


Photo 16

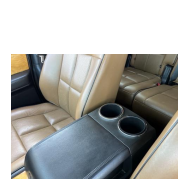


Photo 17



Photo 18

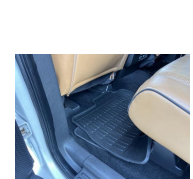


Photo 19



Photo 20



Photo 21



Photo 22



Photo 23

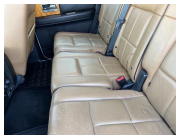


Photo 24



Photo 25



Photo 26



Photo 27



Photo 28



Photo 29



Photo 30

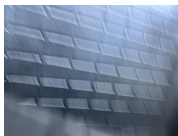


Photo 31



Photo 32



Photo 33



Photo 34



Photo 35



Photo 36



Photo 37



Photo 38

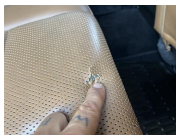


Photo 39

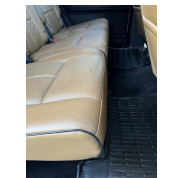


Photo 40



Photo 41



Photo 42



Photo 43



Photo 44



Photo 45



Photo 46

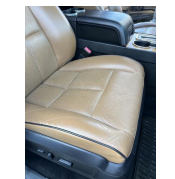


Photo 47

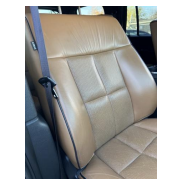


Photo 48

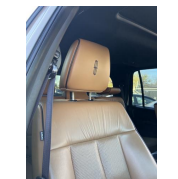


Photo 49

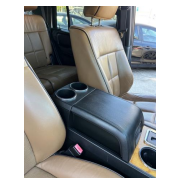


Photo 50



Photo 51



Photo 52



Photo 53



Photo 54



## Exterior Body / Structural Condition

### Paint depth on metal body panels

Factory, matching paint depth on all exterior metal body panels. All exterior metal body panels are original to the vehicle. No structural damage presents nor any structural damage repair work done. No accident damage presents nor any accident damage repair work done. All window glass is original to the vehicle. Normal wear to the exterior as expected for the age and mileage including chips, scrapes, scratches and dings. Overall vehicle exterior is well-kept. See all exterior photos for evidence of current condition.



Photo 55



Photo 56



Photo 57



Photo 58



Photo 59



Photo 60



Photo 61



Photo 62



Photo 63



Photo 64



Photo 65



Photo 66



Photo 67



Photo 68



Photo 69



Photo 70



Photo 71



Photo 72



Photo 73



Photo 74



Photo 75



Photo 76



Photo 77



Photo 78



Photo 79



Photo 80



Photo 81



Photo 82



Photo 83



Photo 84



Photo 85



Photo 86



Photo 87



Photo 88



Photo 89



Photo 90

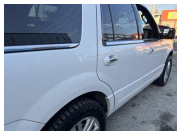


Photo 91

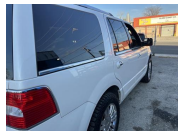


Photo 92



Photo 93



Photo 94

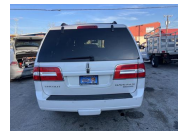


Photo 95



Photo 96



Photo 97



Photo 98



Photo 99



Photo 100



Photo 101



Photo 102



Photo 103

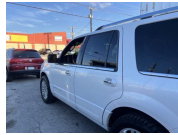


Photo 104



Photo 105

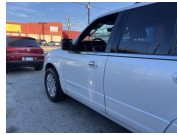


Photo 106



Photo 107

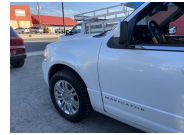


Photo 108



Photo 109



Photo 110



Photo 111

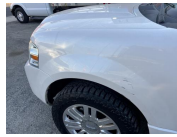


Photo 112



Photo 113



Photo 114



Photo 115



Photo 116



Photo 117



Photo 118



Photo 119

Front bumper condition	Normal wear
Rear bumper condition	Normal wear
Hood panel condition	Normal wear
Driver side fender condition	Normal wear
Passenger side fender condition	Normal wear
Roof panel condition	Normal wear
Front driver side door Condition	Normal wear
Rear driver side door condition	Normal wear
Front passenger side door condition	Normal wear
Rear passenger side door condition	Normal wear
Driver side quarter panel condition	Normal wear
Passenger side quarter panel condition	Normal wear
Trunk panel condition	Normal wear
Truck Bed condition	N/A
Tail gate condition	N/A
Chassis / Frame condition	Normal wear
Frame rail condition	Normal wear

<b>Subframe condition</b>	Normal wear
<b>Engine cradle condition</b>	Normal wear
<b>Skid / Dust cover condition</b>	Normal wear
<b>Collapse beam condition</b>	Normal wear
<b>Window trim condition</b>	Normal wear
<b>Weather stripping condition</b>	Normal wear
<b>Front windshield condition</b>	Normal wear
<b>Other window glass condition</b>	Normal wear
<b>Wheel / Hubcap condition</b>	Normal wear

**ADDITIONAL NOTES**

No excessive rust or corrosion to the frame/chassis vehicle has been utilized in a healthy climate throughout its lifespan

## Tire condition

### Front driver side tire

50-75% remaining

All four tires are matching and in healthy condition. Tires are dated from late 2021. All four tires have right around 70% tread life remaining and are evenly worn.



Photo 120



Photo 121



Photo 122

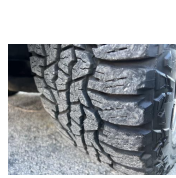


Photo 123

### Front passenger side tire

50-75% remaining



Photo 124



Photo 125



Photo 126

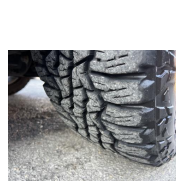


Photo 127

### Rear driver side tire

50-75% remaining

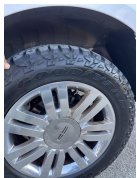


Photo 128



Photo 129



Photo 130

### Rear passenger side tire

50-75% remaining



Photo 131



Photo 132



Photo 133

### Spare tire and equipment

Spare and tools present



Photo 134



## Battery / charging system

### Battery date

02/25



Photo 135

### Standing voltage

12.8



Photo 136

### Loaded voltage

14.29

Battery is accepting the charge from the alternator and the alternator charge output is correct



Photo 137

**Engine Testing / Condition**

2 / 2 (100%)

**Internal engine inspection w/ borescope camera**

Engine clean internally, no excessive gunk or sludge present, there was a little bit of discoloration, noticed up on internally, inspecting the engine. Would suggest reducing oil change intervals from here on out to around 4000 miles. Would not hurt to run a engine flush as well toward the end of the next oil change to help break down a little bit of the buildup. Coolant level is slightly low in the reservoir, would suggest filling up the coolant reservoir. As of the time of the inspection, there is no evidence of any sort of coolant consumption nor any sort of coolant leak out externally from anywhere on the engine/cooling system.. Proper signs of maintenance present. Block test passed, no internal combustion leak out. All external engine accessories in good working. No oil leaks or seepage from anywhere on the engine. External drive belts in decent condition. Currently no concern in mechanical issues present in relation to the engine or related accessories.



Photo 138

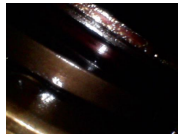


Photo 139



Photo 140

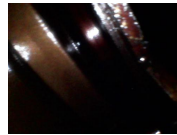


Photo 141



Photo 142



Photo 143



Photo 144



Photo 145



Photo 146



Photo 147

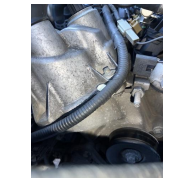


Photo 148

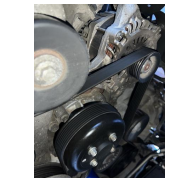


Photo 149



Photo 150

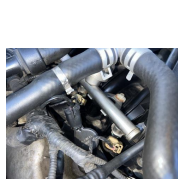


Photo 151

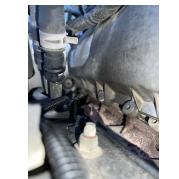


Photo 152

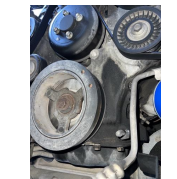


Photo 153

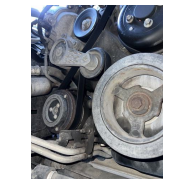


Photo 154

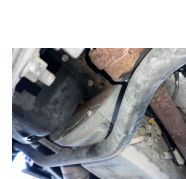


Photo 155

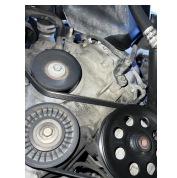


Photo 156

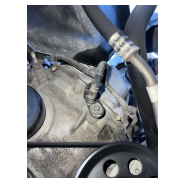


Photo 157

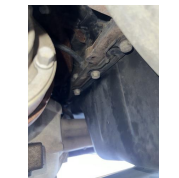


Photo 158

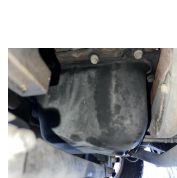


Photo 159

<b>Engine block test</b>	Pass
<b>Coolant mixture test</b>	Pass
<b>Air filter condition</b>	Normal wear
<b>Engine oil condition</b>	Normal wear
<b>Engine oil level</b>	Healthy
<b>Engine oil leaks</b>	None
<b>Coolant level</b>	N/A

Coolant level is slightly low in the reservoir, would suggest filling up the coolant reservoir. As of the time of

the inspection, there is no evidence of any sort of coolant consumption nor any sort of coolant leak out externally from anywhere on the engine/cooling system.

<b>Coolant hoses</b>	Healthy
<b>Radiator condition / function</b>	Healthy
<b>Engine operating temperature</b>	Healthy
<b>Cooling fan function</b>	Healthy
<b>Drive belt condition</b>	Healthy
<b>Abnormal engine knock</b>	None
<b>Abnormal valve train rattle</b>	None
<b>Abnormal bearing noises</b>	None
<b>Engine gunk / sludge</b>	None
<b>Fuel tank</b>	Healthy
<b>Fuel injectors / lines</b>	Healthy
<b>Valve cover gaskets</b>	Healthy
<b>Intake manifold gasket</b>	Healthy
<b>Cylinder head gasket</b>	Healthy
<b>Oil pan gasket</b>	Healthy
<b>Timing cover gasket</b>	Healthy
<b>Rear main seal</b>	Healthy
<b>Timing belt / components</b>	Healthy
<b>Exhaust manifold</b>	Healthy
<b>External engine accessories</b>	Healthy

**Transmission / Differentials****Transmission fluid level**

Healthy

**Transmission fluid condition**

Healthy

**Transmission fluid leaks**

None

No transmission fluid leak out from the transmission casing or the transmission pan area. Drive shaft and seal is free of any fluid leaks. The rear differential is free of any fluid leak out. Shift transitions out on the road are correct across the board.



Photo 160



Photo 161



Photo 162



Photo 163



Photo 164



Photo 165



Photo 166

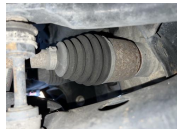


Photo 167

**Transmission cooler / lines**

Healthy

**Front differential condition**

Healthy

**Center differential condition**

Healthy

**Rear differential condition**

Healthy



Photo 168



Photo 169



Photo 170



Photo 171

**Differential leaks**

None

**4x4 function / engagement**

Healthy

**Clutch engagement**

Healthy

**Gear engagement**

Healthy

**Shift transitions**

Healthy

**Drive shaft condition**

Healthy



**Suspension condition****Front shocks / struts**

Healthy

Normal fatigue notice to the suspension components. All of the suspension components seem to be original. None of the suspension components are blown out and due form the replacement. The No excessive surface rust on the exposed metal. No abnormal noise or feedback from the suspension while out on the road. All of the rubber in relation to the mounts, joints and bushings has decent texture.



Photo 172



Photo 173



Photo 174



Photo 175



Photo 176



Photo 177



Photo 178

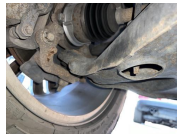


Photo 179

**Rear shocks / struts**

Healthy



Photo 180



Photo 181



Photo 182



Photo 183

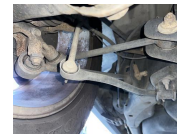


Photo 184

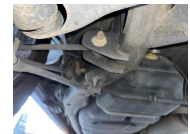


Photo 185

**Control arms upper**

Healthy

**Control arms lower**

Healthy

**Ball joints**

Healthy

**Bushings**

Healthy

**Torsion bars**

Healthy

**Coilover function**

N/A

**Air ride function**

N/A

**Airbag condition**






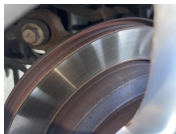
N/A

**Abnormal rust / corrosion to metals**

None

**Deterioration of rubbers**

None

Braking system condition	
Brake fluid condition	Healthy
Brake fluid level	Healthy
Brake fluid leaks	None
Moisture content in brake fluid	None
Brake lines	Healthy
Brake calipers front	Healthy
Brake calipers rear	Healthy
Brake drums rear	N/A
Brake rotors front	Healthy
Brake rotors rear	Healthy
Front brake pad life remaining	75-100% remaining
<div>    </div> <div>           Photo 186           Photo 187           Photo 188         </div>	
Rear brake pad life remaining	75-100% remaining
<div>    </div> <div>           Photo 189           Photo 190           Photo 191         </div>	
E-brake function	Healthy

Steering system condition	
Steering wheel	Healthy
Steering column	Healthy
Steering knuckle / shaft	Healthy
Steering box	N/A
Rack and pinion condition	Healthy
Inner tie rods	Healthy
outer tie rods	Healthy
Rack boots	Healthy
Power steering pump	Healthy
power steering lines	Healthy
Power steering leaks	None
Power steering fluid level	Healthy
Electric steering motor	N/A
Abnormal play / slack in steering	None
Steering alignment on road	Healthy

Computer diagnostic scan

Engine control module

Healthy

There are no active diagnostic fault codes present across any of the control modules on the vehicle. There were a few different different historical diagnostic codes although none of these codes are live/active and not of any current concern.



Photo 192

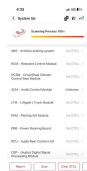


Photo 193



Photo 194



Photo 195



Photo 196

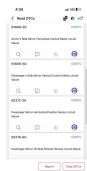


Photo 197

Transmission control module

Healthy

Anti lock brake (ABS) module

Healthy

SRS module

Healthy

hybrid control module

N/A

Suspension control module

N/A



## Vehicle road test

### Vehicle road test comments / concerns

Overall, the vehicle functionality was correct out on the road, across-the-board, no drivability abnormalities or issues present. Normal drivability characteristics, present as expected for the age and mileage on this specific vehicle.

---

**Value of vehicle / Diminished value due to repairs or current damage**

No diminished value due to no structural damage present or any structural damage repair work done

---

## Media summary



Photo 1



Photo 2



Photo 3



Photo 4



Photo 5



Photo 6



Photo 7



Photo 8



Photo 9



Photo 10



Photo 11



Photo 12





Photo 13



Photo 14



Photo 15



Photo 16



Photo 17



Photo 18



Photo 19



Photo 20



Photo 21



Photo 22



Photo 23



Photo 24





Photo 25



Photo 26



Photo 27



Photo 28



Photo 29

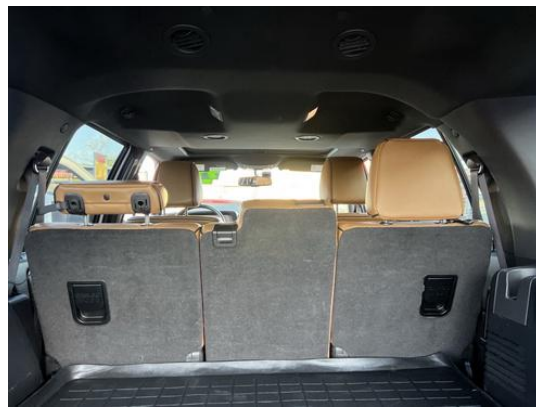


Photo 30



Photo 31



Photo 32





Photo 33



Photo 34



Photo 35



Photo 36



Photo 37



Photo 38



Photo 39



Photo 40



Photo 41



Photo 42





Photo 43



Photo 44



Photo 45



Photo 46



Photo 47



Photo 48



Photo 49



Photo 50



Photo 51



Photo 52



Photo 53



Photo 54





Photo 55



Photo 56



Photo 57



Photo 58



Photo 59



Photo 60



Photo 61



Photo 62



Photo 63



Photo 64



Photo 65



Photo 66



Photo 67



Photo 68



Photo 69



Photo 70





Photo 71



Photo 72



Photo 73



Photo 74



Photo 75



Photo 76



Photo 77



Photo 78





Photo 79



Photo 80



Photo 81



Photo 82



Photo 83



Photo 84



Photo 85



Photo 86





Photo 87



Photo 88



Photo 89



Photo 90



Photo 91



Photo 92



Photo 93



Photo 94





Photo 95



Photo 96



Photo 97



Photo 98



Photo 99



Photo 100



Photo 101



Photo 102





Photo 103



Photo 104



Photo 105



Photo 106



Photo 107



Photo 108



Photo 109



Photo 110



Photo 111



Photo 112



Photo 113



Photo 114



Photo 115



Photo 116



Photo 117



Photo 118





Photo 119



Photo 120



Photo 121



Photo 122



Photo 123



Photo 124



Photo 125



Photo 126





Photo 127



Photo 128



Photo 129



Photo 130



Photo 131



Photo 132



Photo 133



Photo 134





Photo 135



Photo 136



Photo 137



Photo 138



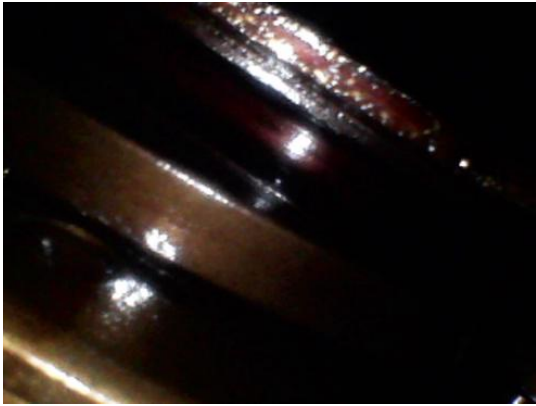


Photo 139

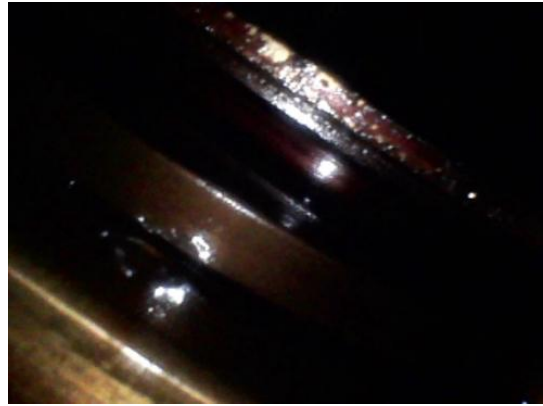


Photo 140

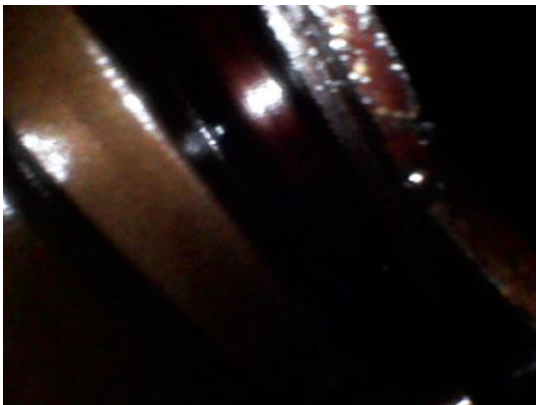


Photo 141



Photo 142



Photo 143



Photo 144



Photo 145



Photo 146



Photo 147



Photo 148



Photo 149



Photo 150





Photo 151



Photo 152

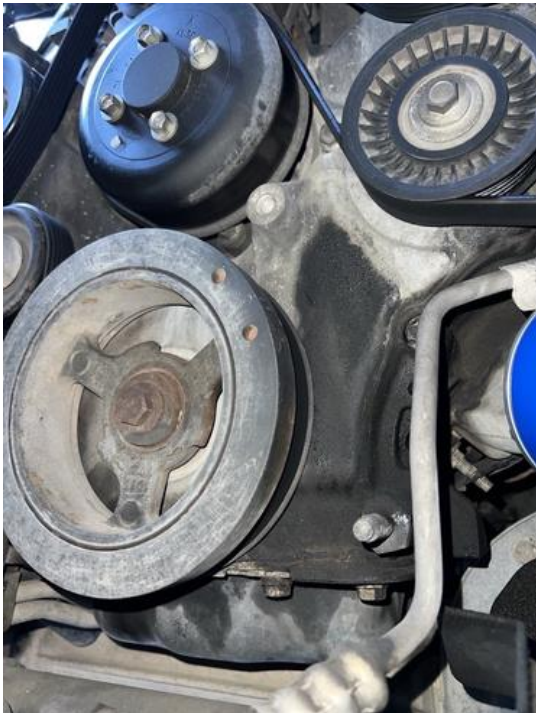


Photo 153



Photo 154



Photo 155



Photo 156



Photo 157



Photo 158





Photo 159



Photo 160



Photo 161



Photo 162



Photo 163



Photo 164



Photo 165



Photo 166





Photo 167



Photo 168



Photo 169



Photo 170



Photo 171



Photo 172



Photo 173



Photo 174



Photo 175



Photo 176





Photo 177



Photo 178



Photo 179



Photo 180



Photo 181



Photo 182



Photo 183



Photo 184



Photo 185



Photo 186





Photo 187



Photo 188



Photo 189



Photo 190





Photo 191

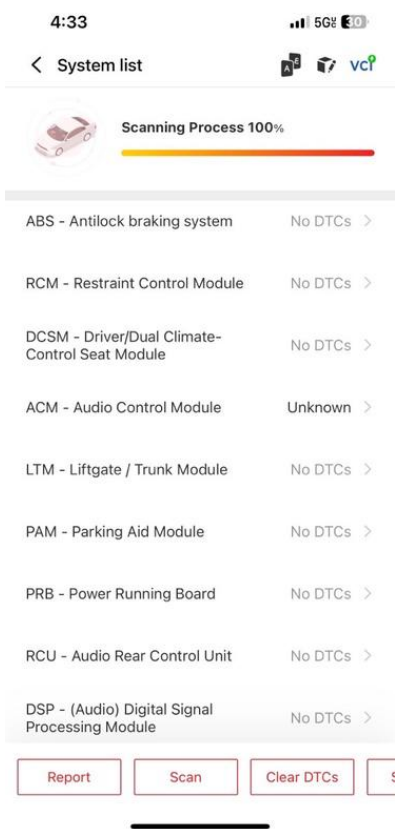


Photo 193

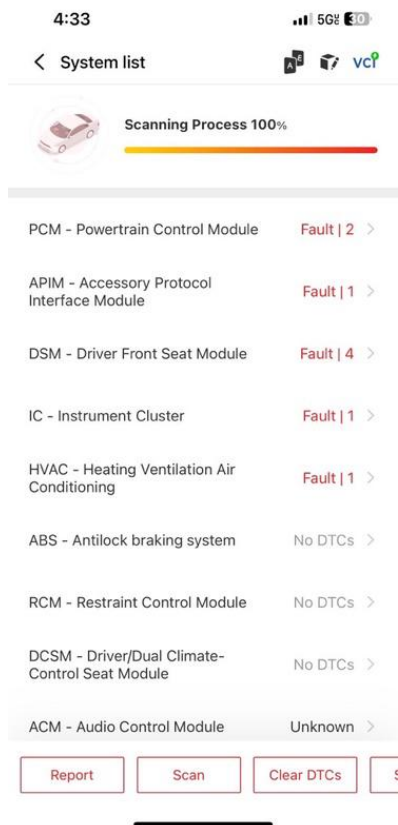


Photo 192

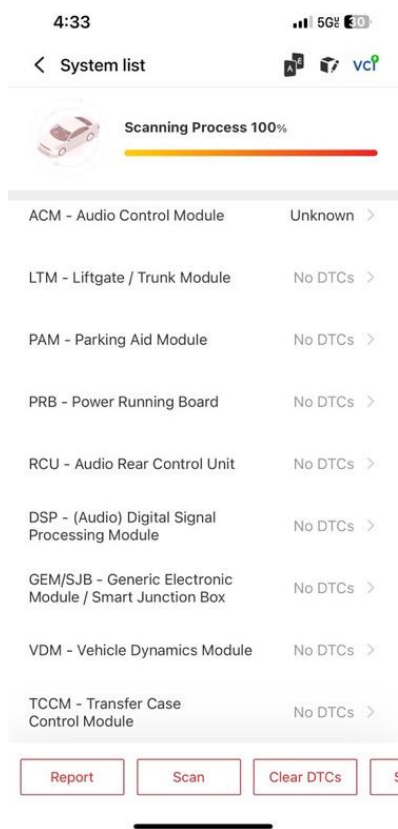


Photo 194

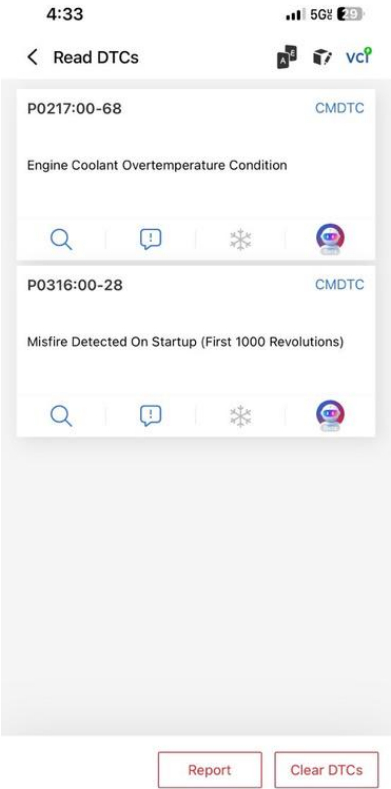


Photo 195

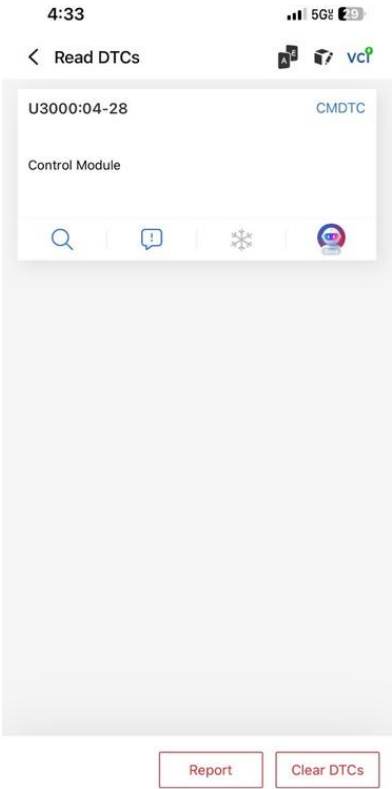


Photo 196

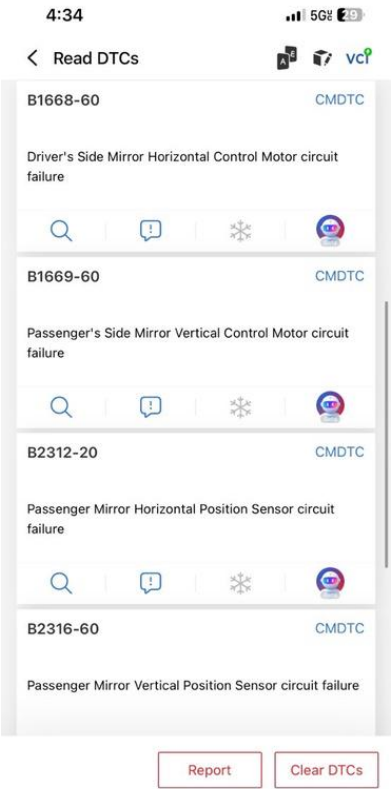


Photo 197