




Peace of Mind Automotive Inspection Report.

Joe Trejo Jr.
210-557-0686

Complete

Score	4 / 4 (100%)	Flagged items	0	Actions	0
Site conducted				Unanswered	
Customer name				Luis Imj auto motor sales	
Date / Time				Dec 26th	
Payment method				Invoice	
Inspection cost				Fleet	
Vehicle Year / Make / Model / Color				2013 ford f250 with fenced truck bed	
VIN				36317 last 5	
<div></div> <div>Photo 1</div>					
license plate				Dealer	
Mileage				95427	
Color				White	

Interior Electrical Functions		2 / 2 (100%)
Horn function		Function correct
Interior lighting function		Function correct
Power lock function		Function correct
Power window function		N/A
Power seat function		N/A
Power Doors / lift gate function		N/A
Air conditioning below 60*		Yes
Heater above 90*		Yes
Climate controls function		Function correct
Radio / display screen function		Function correct
Speakers performing correctly		Function correct
GPS function		N/A
Satellite radio function		N/A
12V power supply function		Function correct
Wireless charging function		N/A
Cooled seat function		N/A
Heated seat function		N/A
Remote entry function		N/A

ADDITIONAL NOTES

Vehicle interior electrical functionality is correct across-the-board, no in operable functions

Interior Condition	
Seat belt function	Function correct
Front seat condition	Normal wear
Rear seat condition	Normal wear
Carpeting condition	Normal wear
Headliner condition	Normal wear
Door panel condition	Normal wear
Dashboard condition	Normal wear
Headliner condition	Normal wear
Center console condition	Normal wear
Glove compartment condition	Normal wear
Sun visor condition	Normal wear
Trunk / Cargo area condition	Normal wear
Trim pieces condition	Normal wear

ADDITIONAL NOTES

Normal wear to the interior as expected for the age and mileage on the vehicle. No water damage to the carpet or carpet installation. No rust on the bottom side of the dash. No evidence of flood damage present. No evidence of the vehicle being smoked inside. no severely damaged or missing panels. See all interior photos for evidence of current condition.



Photo 2



Photo 3



Photo 4



Photo 5



Photo 6



Photo 7



Photo 8

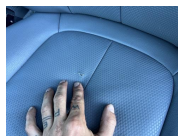


Photo 9



Photo 10



Photo 11



Photo 12



Photo 13



Photo 14



Photo 15



Photo 16



Photo 17



Photo 18



Photo 19

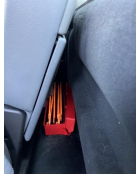


Photo 20



Photo 21



Photo 22



Photo 23



Photo 24



Photo 25



Photo 26



Photo 27



Photo 28



Photo 29



Photo 30



Photo 31



Photo 32

Exterior Body / Structural Condition

Paint depth on metal body panels

Factory, matching paint depth on all exterior metal body panels. All exterior metal body panels are original to the vehicle. No structural damage presents nor any structural damage repair work done. No accident damage presents nor any accident damage repair work done. All window glass is original to the vehicle. Normal wear to the exterior as expected for the age and mileage including chips, scrapes, scratches and dings. Overall vehicle exterior is well-kept. See all exterior photos for evidence of current condition.



Photo 33



Photo 34



Photo 35



Photo 36



Photo 37



Photo 38



Photo 39



Photo 40



Photo 41



Photo 42



Photo 43



Photo 44



Photo 45



Photo 46



Photo 47



Photo 48



Photo 49



Photo 50



Photo 51



Photo 52



Photo 53



Photo 54



Photo 55



Photo 56



Photo 57



Photo 58



Photo 59



Photo 60



Photo 61



Photo 62



Photo 63



Photo 64



Photo 65



Photo 66



Photo 67



Photo 68



Photo 69



Photo 70



Photo 71



Photo 72



Photo 73



Photo 74



Photo 75



Photo 76



Photo 77



Photo 78



Photo 79



Photo 80



Photo 81



Photo 82



Photo 83



Photo 84



Photo 85



Photo 86



Photo 87



Photo 88



Photo 89



Photo 90



Photo 91



Photo 92



Photo 93



Photo 94



Photo 95



Photo 96



Photo 97



Photo 98



Photo 99



Photo 100



Photo 101



Photo 102



Photo 103



Photo 104



Photo 105



Photo 106



Photo 107



Photo 108



Photo 109



Photo 110



Photo 111



Photo 112



Photo 113

Front bumper condition	Normal wear
Rear bumper condition	Normal wear
Hood panel condition	Normal wear
Driver side fender condition	Normal wear
Passenger side fender condition	Normal wear
Roof panel condition	Normal wear
Front driver side door Condition	Normal wear
Rear driver side door condition	N/A
Front passenger side door condition	Normal wear
Rear passenger side door condition	N/A

Driver side quarter panel condition	N/A
Passenger side quarter panel condition	N/A
Trunk panel condition	N/A
Truck Bed condition	Normal wear
Tail gate condition	Normal wear
Chassis / Frame condition	Normal wear
Frame rail condition	Normal wear
Subframe condition	Normal wear
Engine cradle condition	Normal wear
Skid / Dust cover condition	Normal wear
Collapse beam condition	Normal wear
Window trim condition	Normal wear
Weather stripping condition	Normal wear
Front windshield condition	Normal wear
Other window glass condition	Normal wear
Wheel / Hubcap condition	Normal wear

ADDITIONAL NOTES

No excessive rust or corrosion to the frame/chassis vehicle has been utilized in a healthy climate throughout its lifespan

Tire condition

Front driver side tire

75-100% remaining

The front driver side tire and both rear tires are matching with right around 75% tread life remaining



Photo 114



Photo 115



Photo 116

Front passenger side tire

50-75% remaining

This tire is a bit older than the other three tires, this tire has right around 50% tread life remaining



Photo 117



Photo 118



Photo 119



Photo 120

Rear driver side tire

75-100% remaining



Photo 121

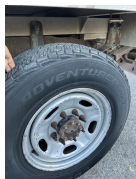


Photo 122



Photo 123



Photo 124

Rear passenger side tire

75-100% remaining



Photo 125

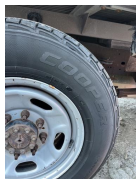


Photo 126



Photo 127

Spare tire and equipment

N/A



Photo 128

Battery / charging system

Battery date 2025

Standing voltage 13.20



Photo 129

Loaded voltage 14.08

Battery is accepting the charge from the alternator and the alternator charge output is correct



Photo 130

Engine Testing / Condition

2 / 2 (100%)

Internal engine inspection w/ borescope camera

Engine clean internally, no gunk or sludge presents. Proper signs of maintenance present. Block test passed, no internal combustion leak out. Coolant mixture correct and cooling system functionality is healthy. All external engine accessories in good working. No oil leaks or seepage from anywhere on the engine. External drive belts in decent condition. Currently no concern in mechanical issues present in relation to the engine or related accessories.



Photo 131



Photo 132



Photo 133



Photo 134



Photo 135



Photo 136



Photo 137



Photo 138



Photo 139



Photo 140

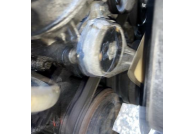


Photo 141

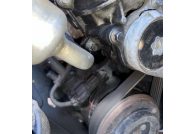


Photo 142



Photo 143

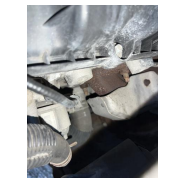


Photo 144

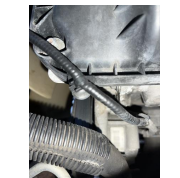


Photo 145

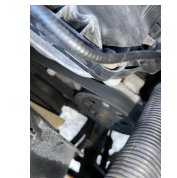


Photo 146

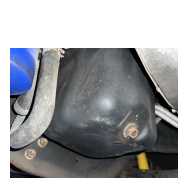


Photo 147

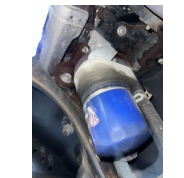


Photo 148

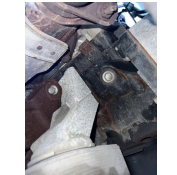


Photo 149



Photo 150

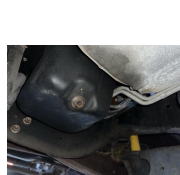


Photo 151

Engine block test

Pass

Coolant mixture test

Pass

Air filter condition

Normal wear

Engine oil condition

Normal wear

Engine oil level

Healthy

Engine oil leaks

None

Coolant level

Healthy

Coolant hoses

Healthy

Radiator condition / function

Healthy

Engine operating temperature	Healthy
Cooling fan function	Healthy
Drive belt condition	Healthy
Abnormal engine knock	None
Abnormal valve train rattle	None
Abnormal bearing noises	None
Engine gunk / sludge	None
Fuel tank	Healthy
Fuel injectors / lines	Healthy
Valve cover gaskets	Healthy
There was a little bit of oil residue noticed at the bottom side of the valve cover gasket area, no attention is required at this point, however a future repair to expect/future maintenance to expect will be replacement of the valve cover gaskets	
Intake manifold gasket	Healthy
Cylinder head gasket	Healthy
Oil pan gasket	Healthy
Timing cover gasket	Healthy
Rear main seal	Healthy
Timing belt / components	Healthy
Exhaust manifold	Healthy
External engine accessories	Healthy

Transmission / Differentials**Transmission fluid level**

Healthy

Transmission fluid condition

Healthy

Transmission fluid leaks

None

No transmission fluid leak out from the transmission casing or the transmission pan area. Drive shaft and seal is free of any fluid leaks. The rear differential is free of any fluid leak out. Shift transitions out on the road are correct across the board.



Photo 152

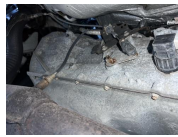


Photo 153



Photo 154



Photo 155



Photo 156



Photo 157



Photo 158



Photo 159

Transmission cooler / lines

Healthy

Front differential condition

N/A

Center differential condition

N/A

Rear differential condition

Healthy

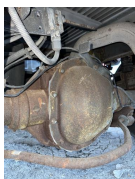


Photo 160



Photo 161



Photo 162

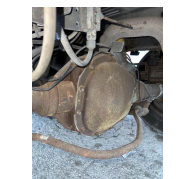


Photo 163



Photo 164

Differential leaks

None

4x4 function / engagement

N/A

Clutch engagement

Healthy

Gear engagement

Healthy

Shift transitions

Healthy

Drive shaft condition

Healthy

Suspension condition**Front shocks / struts**

Healthy

Normal fatigue notice to the suspension components. All of the suspension components seem to be original. None of the suspension components are blown out and due form the replacement. The No excessive surface rust on the exposed metal. No abnormal noise or feedback from the suspension while out on the road. All of the rubber in relation to the mounts, joints and bushings has decent texture.



Photo 165

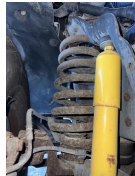


Photo 166



Photo 167



Photo 168



Photo 169



Photo 170



Photo 171

Rear shocks / struts

Healthy



Photo 172



Photo 173



Photo 174



Photo 175



Photo 176



Photo 177

Control arms upper

Healthy

Control arms lower

Healthy

Ball joints

Healthy

Bushings

Healthy

Torsion bars

Healthy

Coilover function

N/A

Air ride function

N/A

Airbag condition

N/A







Abnormal rust / corrosion to metals

None

Typical surface discoloration present throughout the undercarriage of the vehicle no structural rust concerns

Deterioration of rubbers

None

Braking system condition	
Brake fluid condition	Healthy
Brake fluid level	Healthy
Brake fluid leaks	None
Moisture content in brake fluid	None
Brake lines	Healthy
Brake calipers front	Healthy
Brake calipers rear	Healthy
Brake drums rear	N/A
Brake rotors front	Healthy
Brake rotors rear	Healthy
Front brake pad life remaining	25-50% remaining
Right around 40% brake pad life remaining	
<div>    </div> <div> Photo 178 Photo 179 Photo 180 </div>	
Rear brake pad life remaining	50-75% remaining
Right about 60% brake pad life remaining	
<div>    </div> <div> Photo 181 Photo 182 Photo 183 </div>	
E-brake function	Healthy

Steering system condition	
Steering wheel	Healthy
Steering column	Healthy
Steering knuckle / shaft	Healthy
Steering box	Healthy
Rack and pinion condition	N/A
Inner tie rods	N/A
outer tie rods	N/A
Rack boots	N/A
Power steering pump	Healthy
power steering lines	Healthy
Power steering leaks	None
Power steering fluid level	Healthy
Electric steering motor	N/A
Abnormal play / slack in steering	None
Steering alignment on road	Healthy

Computer diagnostic scan

Engine control module

Healthy

All of the control modules on the vehicle were free of any live/active diagnostic fault codes. There were a few different historical fault codes present across various control modules on the vehicle. None of these codes were live/active and are not of any current concern.

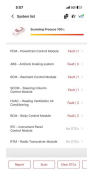


Photo 184



Photo 185

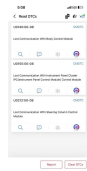


Photo 186



Photo 187



Photo 188

Transmission control module

Healthy

Anti lock brake (ABS) module

Healthy

SRS module

Healthy

hybrid control module

N/A

Suspension control module

N/A

Vehicle road test

Vehicle road test comments / concerns

Overall, the vehicle functionality was correct, normal drivability characteristics, present as expected for the age and mileage on this specific vehicle

Value of vehicle / Diminished value due to repairs or current damage

No diminished value due to no structural damage present or any structural damage repair work done

Media summary



Photo 1



Photo 2



Photo 3



Photo 4



Photo 5



Photo 6



Photo 7



Photo 8



Photo 9



Photo 10



Photo 11



Photo 12



Photo 13



Photo 14



Photo 15



Photo 16



Photo 17



Photo 18



Photo 19



Photo 20



Photo 21



Photo 22



Photo 23



Photo 24



Photo 25



Photo 26



Photo 27



Photo 28



Photo 29



Photo 30



Photo 31



Photo 32



Photo 33



Photo 34



Photo 35



Photo 36



Photo 37



Photo 38



Photo 39



Photo 40



Photo 41



Photo 42



Photo 43



Photo 44



Photo 45



Photo 46



Photo 47



Photo 48



Photo 49



Photo 50



Photo 51



Photo 52



Photo 53



Photo 54



Photo 55



Photo 56



Photo 57



Photo 58



Photo 59



Photo 60



Photo 61



Photo 62



Photo 63



Photo 64



Photo 65



Photo 66



Photo 67



Photo 68



Photo 69



Photo 70



Photo 71



Photo 72



Photo 73



Photo 74



Photo 75



Photo 76



Photo 77



Photo 78



Photo 79



Photo 80



Photo 81



Photo 82



Photo 83



Photo 84



Photo 85



Photo 86



Photo 87



Photo 88



Photo 89



Photo 90



Photo 91



Photo 92



Photo 93



Photo 94



Photo 95



Photo 96



Photo 97



Photo 98



Photo 99



Photo 100



Photo 101



Photo 102



Photo 103



Photo 104



Photo 105



Photo 106



Photo 107



Photo 108



Photo 109



Photo 110



Photo 111



Photo 112



Photo 113



Photo 114



Photo 115



Photo 116



Photo 117



Photo 118



Photo 119



Photo 120



Photo 121

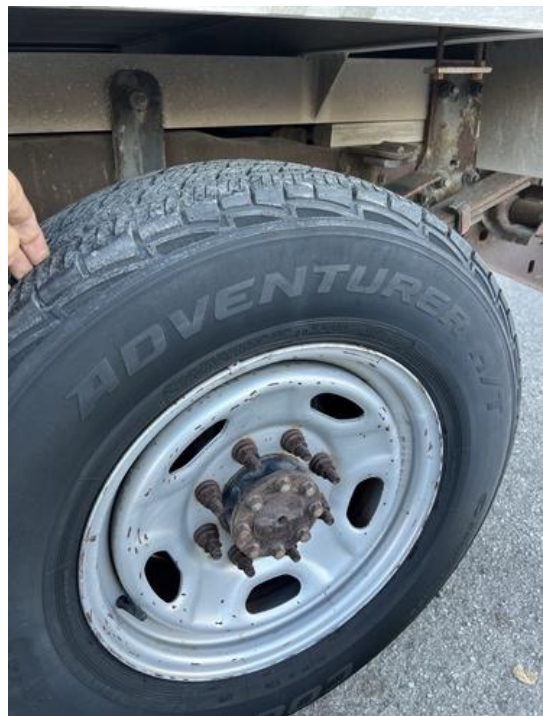


Photo 122



Photo 123



Photo 124



Photo 125



Photo 126



Photo 127



Photo 128



Photo 129



Photo 130



Photo 131



Photo 132



Photo 133

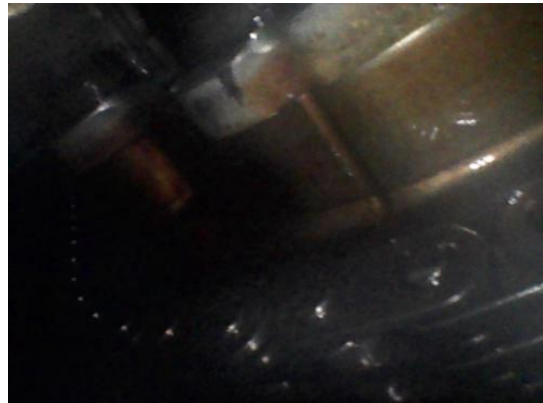


Photo 134



Photo 135



Photo 136



Photo 137



Photo 138



Photo 139



Photo 140



Photo 141



Photo 142



Photo 143



Photo 144



Photo 145

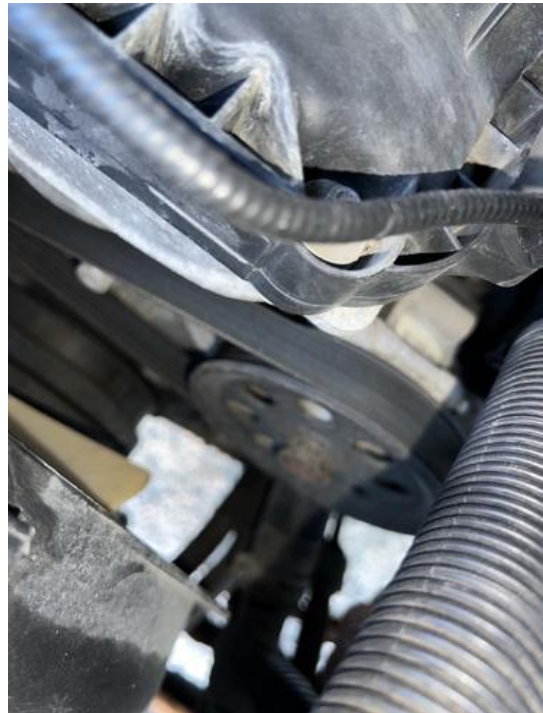


Photo 146



Photo 147



Photo 148



Photo 149



Photo 150

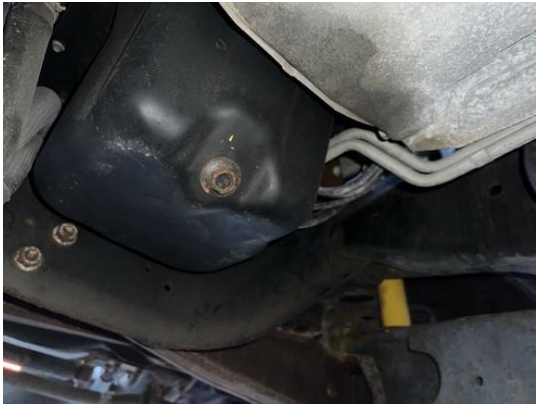


Photo 151



Photo 152



Photo 153



Photo 154



Photo 155



Photo 156



Photo 157



Photo 158



Photo 159



Photo 160



Photo 161



Photo 162



Photo 163



Photo 164



Photo 165



Photo 166



Photo 167



Photo 168



Photo 169



Photo 170



Photo 171



Photo 172



Photo 173



Photo 174



Photo 175



Photo 176



Photo 177



Photo 178



Photo 179



Photo 180



Photo 181



Photo 182



Photo 183



Photo 184

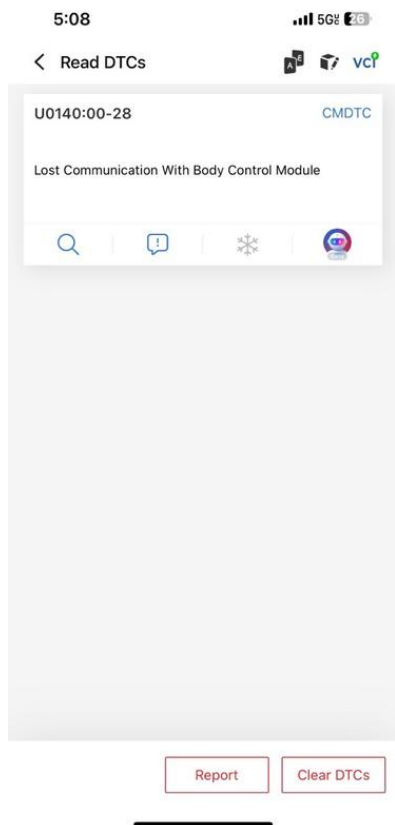


Photo 185

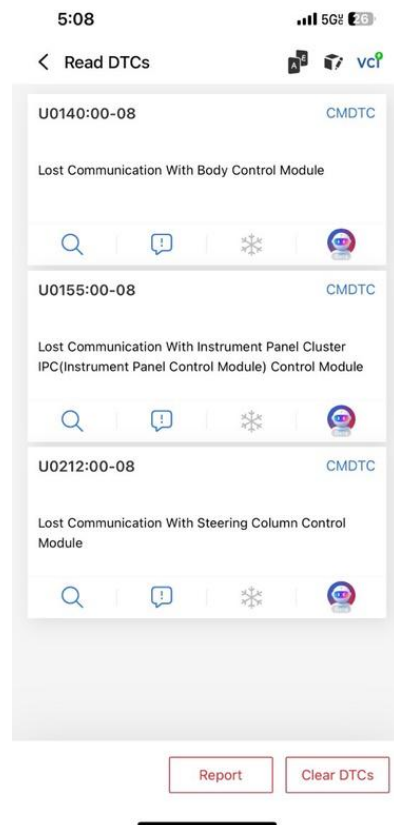


Photo 186

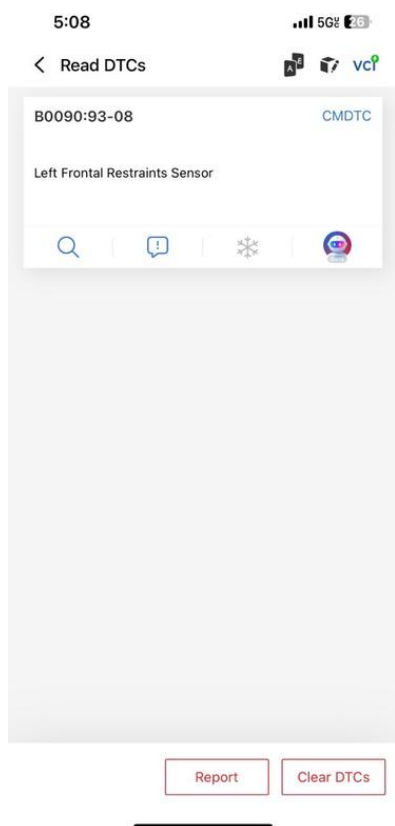


Photo 187

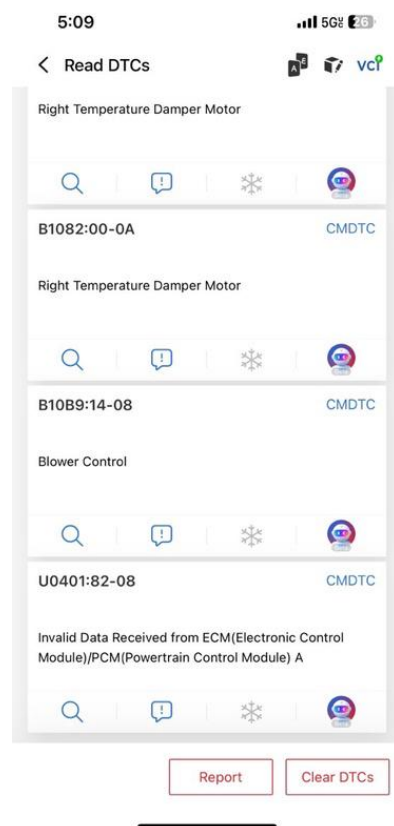


Photo 188