




## Peace of Mind Automotive Inspection Report.

**Joe Trejo Jr.**  
**210-557-0686**

**Complete**

Score	4 / 4 (100%)	Flagged items	0	Actions	0
Site conducted	Unanswered				
Customer name	Luis LMj auto motor sales				
Date / Time	Dec 30th				
Payment method	Invoice				
Inspection cost	Fleet				
Vehicle Year / Make / Model / Color	2016 Honda CRv				
VIN	46897 last 5				
<div></div> <div>Photo 1</div>					
license plate	Dealer				
Mileage	122747				
Color	Blue				

Interior Electrical Functions		2 / 2 (100%)
Horn function		Function correct
Interior lighting function		Function correct
Power lock function		Function correct
Power window function		Function correct
Power seat function		N/A
Power Doors / lift gate function		N/A
Air conditioning below 60*		Yes
Heater above 90*		Yes
Climate controls function		Function correct
Radio / display screen function		Function correct
Speakers performing correctly		Function correct
GPS function		N/A
Satellite radio function		N/A
12V power supply function		Function correct
Wireless charging function		N/A
Cooled seat function		N/A
Heated seat function		N/A
Remote entry function		Function correct

**ADDITIONAL NOTES**

Vehicle interior electrical functionality is correct across-the-board, no in operable functions

Interior Condition	
Seat belt function	Function correct
Front seat condition	Normal wear
Rear seat condition	Normal wear
Carpeting condition	Normal wear
Headliner condition	Normal wear
Door panel condition	Normal wear
Dashboard condition	Normal wear
Headliner condition	Normal wear
Center console condition	Normal wear
Glove compartment condition	Normal wear
Sun visor condition	Normal wear
Trunk / Cargo area condition	Normal wear
Trim pieces condition	Normal wear

### ADDITIONAL NOTES

Normal wear to the interior as expected for the age and mileage on the vehicle. No water damage to the carpet or carpet installation. No rust on the bottom side of the dash. No evidence of flood damage present. No evidence of the vehicle being smoked inside. no severely damaged or missing panels. See all interior photos for evidence of current condition.



Photo 2



Photo 3



Photo 4



Photo 5



Photo 6



Photo 7



Photo 8



Photo 9



Photo 10



Photo 11



Photo 12



Photo 13



Photo 14



Photo 15



Photo 16



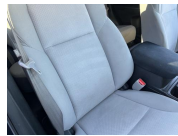
Photo 17



Photo 18



Photo 19



## Exterior Body / Structural Condition

### Paint depth on metal body panels

Factory, matching paint depth on all exterior metal body panels. All exterior metal body panels are original to the vehicle. No structural damage presents nor any structural damage repair work done. No accident damage presents nor any accident damage repair work done. All window glass is original to the vehicle. Normal wear to the exterior as expected for the age and mileage including chips, scrapes, scratches and dings. Overall vehicle exterior is well-kept. See all exterior photos for evidence of current condition.



Photo 45



Photo 46



Photo 47



Photo 48



Photo 49



Photo 50



Photo 51



Photo 52



Photo 53



Photo 54



Photo 55



Photo 56



Photo 57



Photo 58



Photo 59



Photo 60



Photo 61



Photo 62



Photo 63



Photo 64



Photo 65



Photo 66



Photo 67



Photo 68



Photo 69



Photo 70



Photo 71



Photo 72



Photo 73



Photo 74



Photo 75



Photo 76



Photo 77



Photo 78

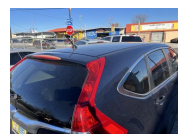


Photo 79



Photo 80

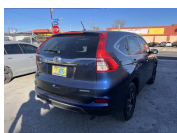


Photo 81



Photo 82



Photo 83



Photo 84



Photo 85



Photo 86



Photo 87



Photo 88



Photo 89

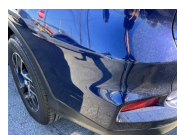


Photo 90



Photo 91



Photo 92



Photo 93



Photo 94

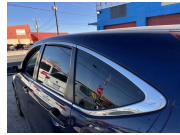


Photo 95



Photo 96



Photo 97



Photo 98



Photo 99



Photo 100



Photo 101



Photo 102



Photo 103



Photo 104



Photo 105



Photo 106

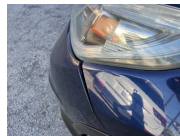


Photo 107



Photo 108



Photo 109



Photo 110



Photo 111



Photo 112

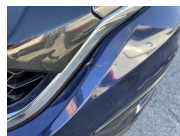


Photo 113



Photo 114

**Front bumper condition**

Normal wear

There is a small crack on the front bumper cover, and the front bumper cover grill is slightly off alignment.

**Rear bumper condition**

Normal wear

**Hood panel condition**

Normal wear

**Driver side fender condition**

Normal wear

**Passenger side fender condition**

Normal wear

**Roof panel condition**

Normal wear

**Front driver side door Condition**

Normal wear

**Rear driver side door condition**

Normal wear

**Front passenger side door condition**

Normal wear

**Rear passenger side door condition**

Normal wear

**Driver side quarter panel condition**

Normal wear

**Passenger side quarter panel condition**

Normal wear

**Trunk panel condition**

Normal wear

**Truck Bed condition**

N/A

<b>Tail gate condition</b>	N/A
<b>Chassis / Frame condition</b>	Normal wear
<b>Frame rail condition</b>	Normal wear
<b>Subframe condition</b>	Normal wear
<b>Engine cradle condition</b>	Normal wear
<b>Skid / Dust cover condition</b>	Normal wear
<b>Collapse beam condition</b>	Normal wear
<b>Window trim condition</b>	Normal wear
<b>Weather stripping condition</b>	Normal wear
<b>Front windshield condition</b>	Normal wear
<b>Other window glass condition</b>	Normal wear
<b>Wheel / Hubcap condition</b>	Normal wear
<b>ADDITIONAL NOTES</b>	
No excessive rust or corrosion to the frame/chassis	

## Tire condition

### Front driver side tire

50-75% remaining

All four tires are matching. All four tires are dated from 2023. Tires are in healthy condition with right around 65% tread life remaining all around.



Photo 115



Photo 116



Photo 117

### Front passenger side tire

50-75% remaining

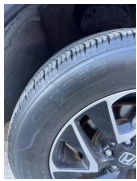


Photo 118



Photo 119



Photo 120

### Rear driver side tire

50-75% remaining



Photo 121



Photo 122

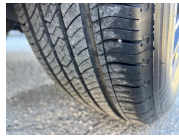


Photo 123

### Rear passenger side tire

50-75% remaining



Photo 124



Photo 125

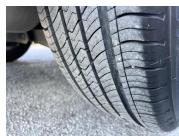


Photo 126

## Spare tire and equipment

Spare and tools present

## Battery / charging system

### Battery date

Battery is dated from March 2023,



Photo 127

### Standing voltage

13.0



Photo 128

### Loaded voltage

13.5

Battery is accepting the charge from the alternator and the alternator charge output is correct



Photo 129

**Engine Testing / Condition**

2 / 2 (100%)

**Internal engine inspection w/ borescope camera**

Engine clean internally, no gunk or sludge presents. Proper signs of maintenance present. Block test passed, no internal combustion leak out. Coolant mixture correct and cooling system functionality is healthy. All external engine accessories in good working. External drive belts in decent condition. Currently no concern in mechanical issues present in relation to the engine or related accessories.



Photo 130



Photo 131



Photo 132



Photo 133

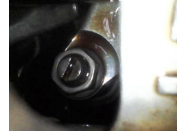


Photo 134



Photo 135



Photo 136



Photo 137



Photo 138



Photo 139



Photo 140

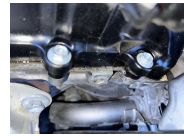


Photo 141



Photo 142



Photo 143



Photo 144



Photo 145



Photo 146



Photo 147



Photo 148

<b>Engine block test</b>	Pass
<b>Coolant mixture test</b>	Pass
<b>Air filter condition</b>	Normal wear
<b>Engine oil condition</b>	Normal wear
<b>Engine oil level</b>	Healthy
<b>Engine oil leaks</b>	None
<b>Coolant level</b>	Healthy
<b>Coolant hoses</b>	Healthy
<b>Radiator condition / function</b>	Healthy

Engine operating temperature	Healthy
Cooling fan function	Healthy
Drive belt condition	Healthy
Abnormal engine knock	None
Abnormal valve train rattle	None
Abnormal bearing noises	None
Engine gunk / sludge	None
Fuel tank	Healthy
Fuel injectors / lines	Healthy
Valve cover gaskets	Issue present
Small amount of oil seepage noticed at the valve cover gasket area, replacement of the valve cover gasket will be a future maintenance job to expect. This is considered normal maintenance on these vehicles.	
Intake manifold gasket	Healthy
Cylinder head gasket	Healthy
Oil pan gasket	Healthy
Timing cover gasket	Healthy
Rear main seal	Healthy
Timing belt / components	Healthy
Exhaust manifold	Healthy
External engine accessories	Healthy

**Transmission / Differentials****Transmission fluid level**

Healthy

**Transmission fluid condition**

Healthy

**Transmission fluid leaks**

None

No transmission fluid leak out from the transmission casing or the transmission pan area, both left and right side axle seals are free of any fluid leaks. Both left and right side CV axle are in healthy condition. Shift transitions out on the road are correct across-the-board.



Photo 149



Photo 150



Photo 151



Photo 152



Photo 153



Photo 154



Photo 155

**Transmission cooler / lines**

Healthy

**Front differential condition**

Healthy

**Center differential condition**

N/A

**Rear differential condition**

N/A

**Differential leaks**

None

**4x4 function / engagement**

N/A

**Clutch engagement**

Healthy

**Gear engagement**

Healthy

**Shift transitions**

Healthy

**Drive shaft condition**

N/A

## Suspension condition

### Front shocks / struts

Healthy

Normal fatigue notice to the suspension components. All of the suspension components seem to be original. None of the suspension components are blown out and due form the replacement. The No excessive surface rust on the exposed metal. No abnormal noise or feedback from the suspension while out on the road. All of the rubber in relation to the mounts, joints and bushings has decent texture.



Photo 156



Photo 157



Photo 158



Photo 159



Photo 160



Photo 161

### Rear shocks / struts

Healthy

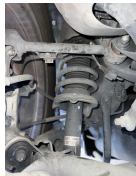


Photo 162



Photo 163



Photo 164



Photo 165



Photo 166



Photo 167



Photo 168

### Control arms upper

Healthy

### Control arms lower

Healthy

### Ball joints

Healthy

### Bushings

Healthy

### Torsion bars

Healthy

### Coilover function

N/A

### Air ride function

N/A

### Airbag condition








N/A

### Abnormal rust / corrosion to metals

None

### Deterioration of rubbers

N/A

Braking system condition	
Brake fluid condition	Healthy
Brake fluid level	Healthy
Brake fluid leaks	None
Moisture content in brake fluid	None
Brake lines	Healthy
Brake calipers front	Healthy
Brake calipers rear	Healthy
Brake drums rear	N/A
Brake rotors front	N/A
Brake rotors rear	Healthy
Front brake pad life remaining	50-75% remaining
Right around 50% brake pad life remaining	
<div>     </div> <div> <span>Photo 169</span> <span>Photo 170</span> <span>Photo 171</span> <span>Photo 172</span> </div>	
Rear brake pad life remaining	25-50% remaining
Right around 35% brake pad life remaining	
<div>    </div> <div> <span>Photo 173</span> <span>Photo 174</span> <span>Photo 175</span> </div>	
E-brake function	Healthy

Steering system condition	
Steering wheel	Healthy
Steering column	Healthy
Steering knuckle / shaft	Healthy
Steering box	N/A
Rack and pinion condition	Healthy
Inner tie rods	Healthy
outer tie rods	Healthy
Rack boots	Healthy
Power steering pump	N/A
power steering lines	N/A
Power steering leaks	N/A
Power steering fluid level	N/A
Electric steering motor	Healthy
Abnormal play / slack in steering	None
Steering alignment on road	Healthy

## Computer diagnostic scan

### Engine control module

Healthy

All of the control modules are free of any live/active diagnostic fault codes. All live feed diagnostic testing was successfully passed.

There was one historical diagnostic fault code present, this code is not live or active, and no attention is needed.



Photo 176



Photo 177

### Transmission control module

Healthy

### Anti lock brake (ABS) module

Healthy

### SRS module

Healthy

### hybrid control module

N/A

### Suspension control module

N/A

## Vehicle road test

### Vehicle road test comments / concerns

Overall, the vehicle functionality is correct out on the road, across-the-board, no drivability abnormalities or issues present. Normal drivability characteristics, present as expected for the age and mileage on this specific vehicle.

There is a very small amount of vibration noticed inside the cab at a dead stop, this is a typical characteristic of this generation CVT transmission.

---

**Value of vehicle / Diminished value due to repairs or current damage**

No diminished value due to no structural damage presents nor any structural damage repair work done

---

## Media summary



Photo 1



Photo 2



Photo 3



Photo 4



Photo 5



Photo 6



Photo 7



Photo 8



Photo 9



Photo 10



Photo 11



Photo 12



Photo 13



Photo 14



Photo 15



Photo 16



Photo 17



Photo 18



Photo 19



Photo 20



Photo 21



Photo 22

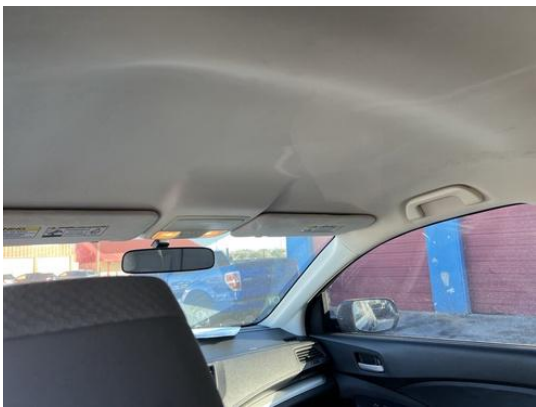


Photo 23



Photo 24



Photo 25



Photo 26



Photo 27



Photo 28



Photo 29



Photo 30



Photo 31



Photo 32



Photo 33



Photo 34



Photo 35



Photo 36



Photo 37



Photo 38



Photo 39



Photo 40

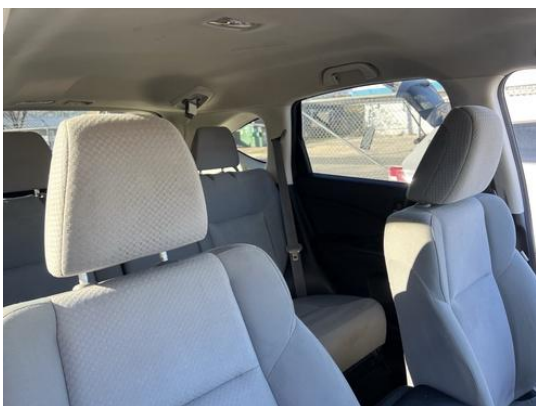


Photo 41



Photo 42



Photo 43



Photo 44



Photo 45



Photo 46



Photo 47



Photo 48



Photo 49



Photo 50



Photo 51



Photo 52



Photo 53



Photo 54



Photo 55



Photo 56



Photo 57



Photo 58



Photo 59



Photo 60



Photo 61



Photo 62



Photo 63



Photo 64



Photo 65



Photo 66



Photo 67



Photo 68



Photo 69



Photo 70



Photo 71



Photo 72



Photo 73



Photo 74



Photo 75



Photo 76



Photo 77



Photo 78



Photo 79



Photo 80



Photo 81



Photo 82



Photo 83



Photo 84



Photo 85



Photo 86



Photo 87



Photo 88



Photo 89



Photo 90



Photo 91



Photo 92



Photo 93



Photo 94



Photo 95



Photo 96



Photo 97



Photo 98



Photo 99



Photo 100



Photo 101



Photo 102



Photo 103



Photo 104



Photo 105



Photo 106



Photo 107



Photo 108



Photo 109



Photo 110



Photo 111



Photo 112



Photo 113



Photo 114



Photo 115



Photo 116



Photo 117



Photo 118



Photo 119



Photo 120



Photo 121



Photo 122



Photo 123



Photo 124



Photo 125



Photo 126



Photo 127



Photo 128



Photo 129



Photo 130



Photo 131



Photo 132



Photo 133



Photo 134



Photo 135



Photo 136



Photo 137



Photo 138



Photo 139



Photo 140

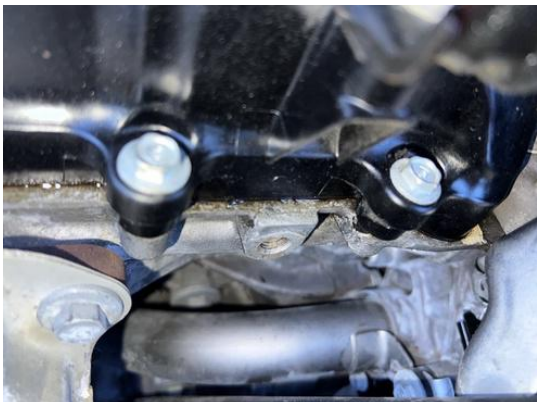


Photo 141



Photo 142



Photo 143



Photo 144



Photo 145



Photo 146



Photo 147



Photo 148



Photo 149



Photo 150



Photo 151



Photo 152



Photo 153



Photo 154



Photo 155



Photo 156



Photo 157



Photo 158



Photo 159



Photo 160



Photo 161

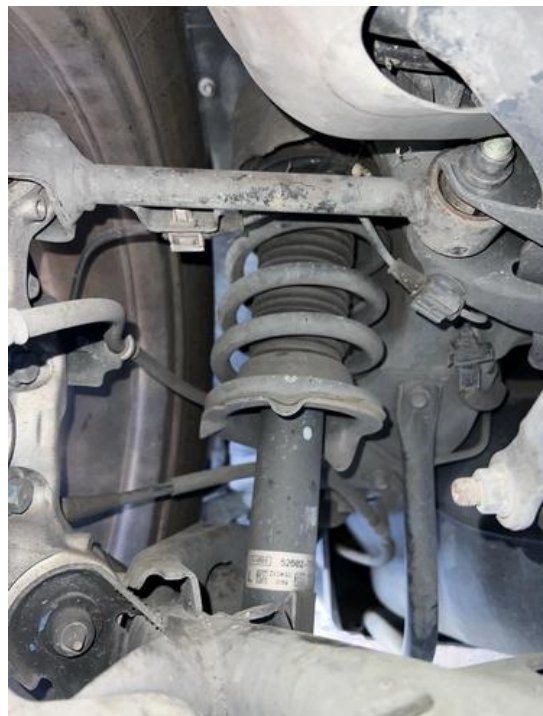


Photo 162

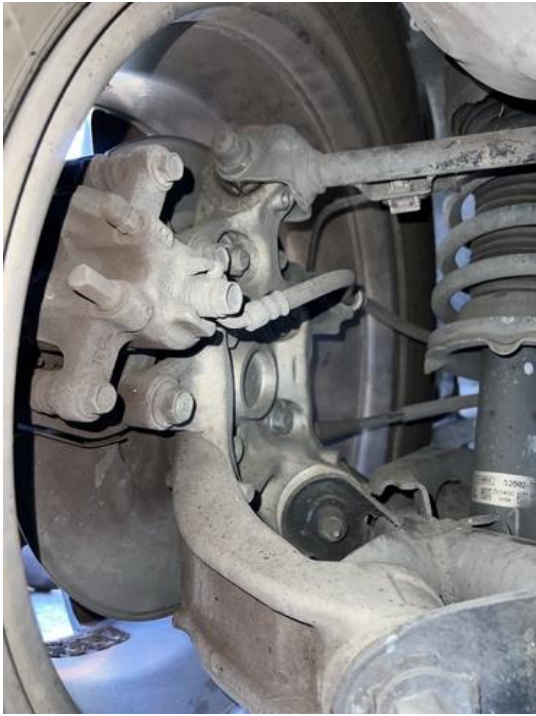


Photo 163



Photo 164



Photo 165



Photo 166



Photo 167



Photo 168



Photo 169



Photo 170



Photo 171



Photo 172



Photo 173



Photo 174



Photo 175

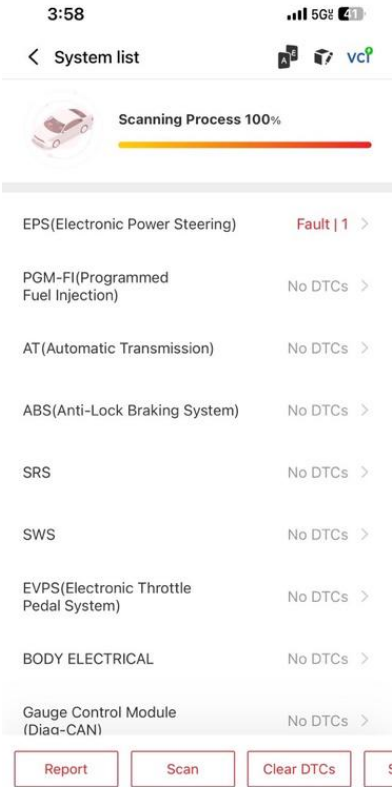


Photo 176

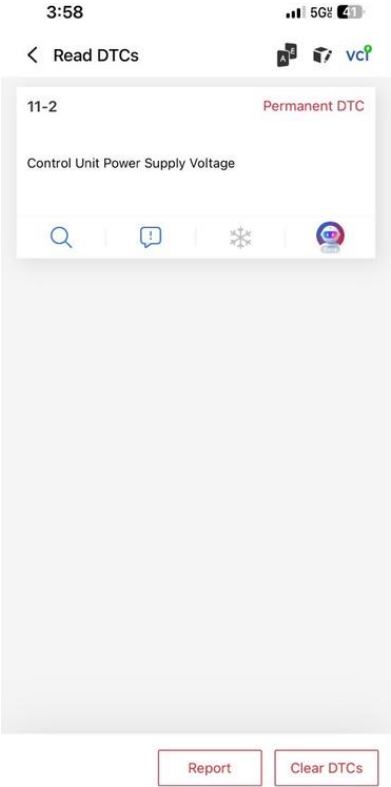


Photo 177