




Peace of Mind Automotive Inspection Report.

Joe Trejo Jr.
210-557-0686

Peace of Mind Automotive Inspection Report.
Joe Trejo Jr.
210-557-0686

Complete

Score	4 / 4 (100%)	Flagged items	0	Actions	0
Site conducted					Unanswered
Customer name					Luis Imj auto motor sales
Date / Time					June 2nd
Payment method					Invoice
Inspection cost					Fleet
Vehicle Year / Make / Model / Color					2017 Lexus RC 350
VIN					016903 last 6
					
Photo 1					
license plate					Dealer
Mileage					147214
Color					Grey

Interior Electrical Functions	2 / 2 (100%)
Horn function	Function correct
Interior lighting function	Function correct
Power lock function	Function correct
Power window function	Function correct
Power seat function	Function correct
Power Doors / lift gate function	N/A
Air conditioning below 60*	Yes
Heater above 90*	Yes
Climate controls function	Function correct
Radio / display screen function	Function correct
Speakers performing correctly	Function correct
GPS function	Function correct
Satellite radio function	Function correct
12V power supply function	Function correct
Wireless charging function	N/A
Cooled seat function	Function correct
Heated seat function	Function correct
Remote entry function	Function correct

ADDITIONAL NOTES

Vehicle interior electrical functionality is correct, no inoperable function

Interior Condition	
Seat belt function	Function correct
Front seat condition	Normal wear
Rear seat condition	Normal wear
Carpeting condition	Normal wear
Headliner condition	Normal wear
Door panel condition	Normal wear
Dashboard condition	Normal wear
Headliner condition	Normal wear
Center console condition	Normal wear
Glove compartment condition	Normal wear
Sun visor condition	Normal wear
Trunk / Cargo area condition	Normal wear
Trim pieces condition	Normal wear

ADDITIONAL NOTES

Normal wear to the interior as expected for the age and mileage on the vehicle. No water damage to the carpet or carpet installation. No rust on the bottom side of the dash. No evidence of flood damage present. No evidence of the vehicle being smoked inside. no severely damaged or missing panels. See all interior photos for evidence of current condition.



Photo 2



Photo 3



Photo 4



Photo 5



Photo 6



Photo 7



Photo 8

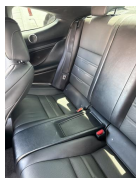


Photo 9

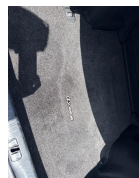


Photo 10



Photo 11



Photo 12



Photo 13



Photo 14



Photo 15



Photo 16



Photo 17



Photo 18



Photo 19



Photo 20



Photo 21



Photo 22



Photo 23



Photo 24

Exterior Body / Structural Condition

Paint depth on metal body panels

Factory, matching paint depth on all exterior metal body panels aside from a little bit of touchup work that was done on the front passenger side of the vehicle. All of the chrome trim pieces have been final wrapped, there are some areas of the vinyl wrap where the vinyl has started to lift. The roof as well as the trunk have also been vinyl wrapped in a carbon fiber material. The vinyl wrap does appear to be getting aged . All exterior metal body panels are original to the vehicle. No structural damage presents nor any structural damage repair work done. No accident damage presents nor any accident damage repair work done . All window glass is original to the vehicle. Normal wear to the exterior as expected for the age and mileage including chips, scrapes, scratches and dings. Overall vehicle exterior is well-kept. See all exterior photos for evidence of current condition.



Photo 25



Photo 26



Photo 27



Photo 28



Photo 29



Photo 30



Photo 31



Photo 32



Photo 33



Photo 34



Photo 35



Photo 36



Photo 37



Photo 38



Photo 39



Photo 40



Photo 41



Photo 42



Photo 43



Photo 44



Photo 45



Photo 46



Photo 47



Photo 48



Photo 49



Photo 50



Photo 51



Photo 52



Photo 53



Photo 54



Photo 55



Photo 56



Photo 57



Photo 58



Photo 59



Photo 60



Photo 61



Photo 62



Photo 63



Photo 64



Photo 65



Photo 66



Photo 67



Photo 68

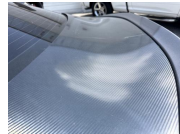


Photo 69



Photo 70



Photo 71



Photo 72



Photo 73



Photo 74



Photo 75



Photo 76



Photo 77



Photo 78



Photo 79



Photo 80



Photo 81



Photo 82



Photo 83



Photo 84



Photo 85



Photo 86



Photo 87



Photo 88



Photo 89



Photo 90



Photo 91



Photo 92



Photo 93



Photo 94



Photo 95



Photo 96



Photo 97



Photo 98



Photo 99



Photo 100



Photo 101



Photo 102



Photo 103



Photo 104

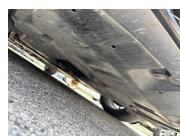


Photo 105



Photo 106



Photo 107



Photo 108

Front bumper condition

Normal wear

Rear bumper condition

Normal wear

Hood panel condition

Normal wear

Driver side fender condition

Normal wear

Passenger side fender condition

Normal wear

Roof panel condition

Normal wear

Front driver side door Condition

Normal wear

Rear driver side door condition



Normal wear

Front passenger side door condition

Normal wear

Rear passenger side door condition

Normal wear

Driver side quarter panel condition	Normal wear
Passenger side quarter panel condition	Normal wear
Trunk panel condition	Normal wear
Truck Bed condition	N/A
Tail gate condition	N/A
Chassis / Frame condition	Normal wear
Frame rail condition	Normal wear
Subframe condition	Normal wear
Engine cradle condition	Normal wear
Skid / Dust cover condition	Normal wear
Collapse beam condition	Normal wear
Window trim condition	Normal wear
Weather stripping condition	Normal wear
Front windshield condition	Normal wear
  <p>Photo 109 Photo 110</p>	
Other window glass condition	Normal wear
Wheel / Hubcap condition	Normal wear

ADDITIONAL NOTES

No excessive rust or corrosion

Tire condition

Front driver side tire

75-100% remaining

All four tires are matching in and healthy condition. Tires have been recently replaced and have over 85% tread life remaining all around.



Photo 111



Photo 112



Photo 113

Front passenger side tire

75-100% remaining



Photo 114



Photo 115

Rear driver side tire

75-100% remaining



Photo 116



Photo 117



Photo 118

Rear passenger side tire

75-100% remaining



Photo 119

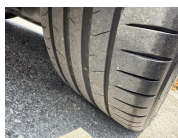


Photo 120

Spare tire and equipment

Spare and tools present

Battery / charging system

Battery date 08/24

Standing voltage 12.8

Loaded voltage 14.1

Battery is accepting the charge from the alternator and the alternator charge output is correct



Photo 121

Engine Testing / Condition

2 / 2 (100%)

Internal engine inspection w/ borescope camera

Engine clean internally, no gunk or sludge presents. Proper signs of maintenance present. Block test passed, no internal combustion leak out. Coolant mixture correct and cooling system functionality is healthy. All external engine accessories in good working. No leaks or seepage from anywhere on the engine. External drive belts in decent condition. Currently no concern in mechanical issues present in relation to the engine or related accessories.



Photo 122



Photo 123



Photo 124



Photo 125



Photo 126



Photo 127



Photo 128



Photo 129



Photo 130



Photo 131

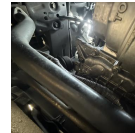


Photo 132



Photo 133



Photo 134

Engine block test

Pass



Photo 135



Photo 136



Photo 137

Coolant mixture test

Pass

Air filter condition

Normal wear

Engine oil condition

Normal wear

Engine oil level

Healthy

Engine oil leaks

None

Coolant level

Healthy

Coolant hoses

Healthy

Radiator condition / function

Healthy

Engine operating temperature	Healthy
Cooling fan function	Healthy
Drive belt condition	Healthy
Abnormal engine knock	None
Abnormal valve train rattle	None
Abnormal bearing noises	None
Engine gunk / sludge	None
Fuel tank	Healthy
Fuel injectors / lines	Healthy
Valve cover gaskets	Healthy
Intake manifold gasket	Healthy
Cylinder head gasket	Healthy
Oil pan gasket	Healthy
Timing cover gasket	Healthy
Rear main seal	Healthy
Timing belt / components	Healthy
Exhaust manifold	Healthy
The vehicle does have a axle back exhaust/Muffler Delete exhaust installed.	
External engine accessories	Healthy

Transmission / Differentials

Transmission fluid level	Healthy
---------------------------------	---------

Transmission fluid condition	Healthy
-------------------------------------	---------

Transmission fluid leaks	None
---------------------------------	------

No transmission fluid leaks from the transmission casing or the transmission pan area. The tail shaft seal is free of any fluid leaks. The driveshaft is in healthy condition. Shift transitions out on the road are correct across the board. No fluid leak out from the rear differential.



Photo 138



Photo 139



Photo 140



Photo 141



Photo 142

Transmission cooler / lines	Healthy
------------------------------------	---------

Front differential condition	N/A
-------------------------------------	-----

Center differential condition	N/A
--------------------------------------	-----

Rear differential condition	Healthy
------------------------------------	---------



Photo 143



Photo 144

Differential leaks	N/A
---------------------------	-----

4x4 function / engagement	N/A
----------------------------------	-----

Clutch engagement	Healthy
--------------------------	---------

Gear engagement	Healthy
------------------------	---------

Shift transitions	Healthy
--------------------------	---------

Drive shaft condition	Healthy
------------------------------	---------

Suspension condition

Front shocks / struts

Healthy

Normal fatigue notice to the suspension components. All of the suspension components seem to be original. None of the suspension components are blown out and due form the replacement. The No excessive surface rust on the exposed metal. No abnormal noise or feedback from the suspension while out on the road. All of the rubber in relation to the mounts, joints and bushings has decent texture.

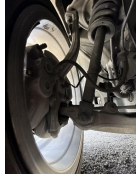


Photo 145



Photo 146



Photo 147



Photo 148



Photo 149



Photo 150

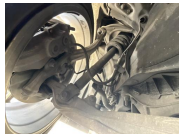


Photo 151

Rear shocks / struts

Healthy



Photo 152



Photo 153



Photo 154



Photo 155



Photo 156

Control arms upper

Healthy

Control arms lower

Healthy

Ball joints

Healthy

Bushings

Healthy

Torsion bars

Healthy

Coilover function

N/A

Air ride function

N/A

Airbag condition







N/A

Abnormal rust / corrosion to metals

None

Deterioration of rubbers

None

Braking system condition		
Brake fluid condition	Healthy	
Brake fluid level	Healthy	
Brake fluid leaks	None	
Moisture content in brake fluid	None	
Brake lines	Healthy	
Brake calipers front	Healthy	
Brake calipers rear	Healthy	
Brake drums rear	N/A	
Brake rotors front	Healthy	
Brake rotors rear	Healthy	
Front brake pad life remaining	50-75% remaining	
<p>Right around 65% brake pad life remain remaining on the front brake system and right around 75% brake pad. Life remain remaining on the rear brake system.</p>		
 Photo 157	 Photo 158	 Photo 159
Rear brake pad life remaining	75-100% remaining	
 Photo 160	 Photo 161	 Photo 162
E-brake function	Healthy	

Steering system condition	
Steering wheel	Healthy
Steering column	Healthy
Steering knuckle / shaft	Healthy
Steering box	N/A
Rack and pinion condition	Healthy
Inner tie rods	Healthy
outer tie rods	Healthy
Rack boots	Healthy
Power steering pump	N/A
power steering lines	N/A
Power steering leaks	N/A
Power steering fluid level	N/A
Electric steering motor	Healthy
Abnormal play / slack in steering	None
Steering alignment on road	Healthy

Computer diagnostic scan

Engine control module

Healthy

All of the main control modules on the vehicle were free of any live/active diagnostic fault code. At the time of the inspection there were no active warning lights present. All of the live feed diagnostic test testing was successfully passed. There were a few different historical diagnostic fault codes that were present however, with these fault codes being inactive, there is no attention needed. This is just evidence of fault codes that have popped up in the past.



Photo 163



Photo 164

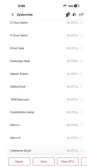


Photo 165



Photo 166



Photo 167



Photo 168



Photo 169



Photo 170

Transmission control module

Healthy

Anti lock brake (ABS) module

Healthy

SRS module

Healthy

hybrid control module

N/A

Suspension control module

N/A

Vehicle road test

Vehicle road test comments / concerns

Normal drive characteristics present as expected for the age and mileage on this specific vehicle. No major/concerning drive abnormalities.

Value of vehicle / Diminished value due to repairs or current damage

No diminished value due to no structural damage presence nor any structural damage repair work done

Media summary



Photo 1



Photo 2



Photo 3



Photo 4



Photo 5



Photo 6



Photo 7



Photo 8



Photo 9



Photo 10



Photo 11

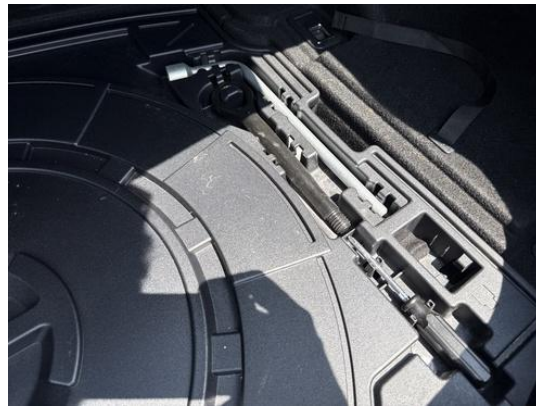


Photo 12



Photo 13



Photo 14



Photo 15



Photo 16

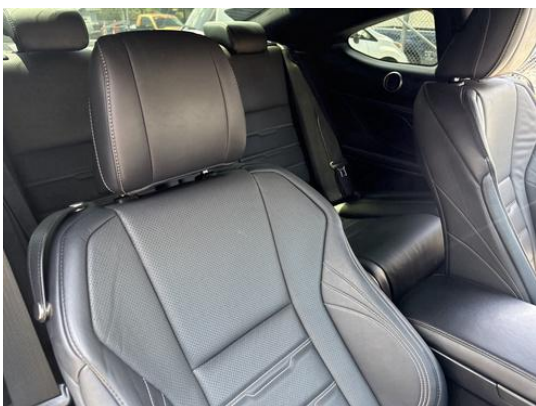


Photo 17

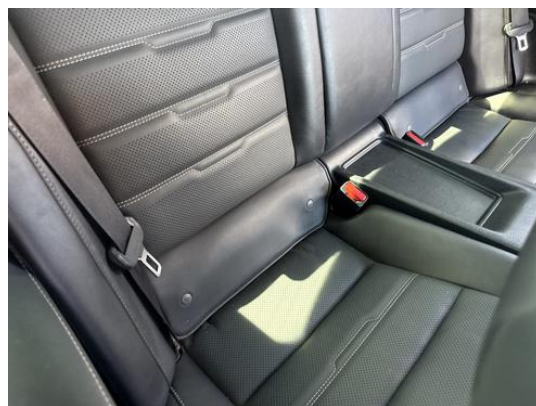


Photo 18



Photo 19



Photo 20



Photo 21



Photo 22



Photo 23



Photo 24



Photo 25



Photo 26



Photo 27



Photo 28



Photo 29



Photo 30



Photo 31



Photo 32



Photo 33



Photo 34



Photo 35



Photo 36



Photo 37



Photo 38



Photo 39



Photo 40



Photo 41



Photo 42



Photo 43



Photo 44



Photo 45



Photo 46



Photo 47



Photo 48



Photo 49



Photo 50



Photo 51



Photo 52



Photo 53



Photo 54



Photo 55



Photo 56



Photo 57



Photo 58



Photo 59



Photo 60



Photo 61



Photo 62



Photo 63



Photo 64



Photo 65



Photo 66



Photo 67



Photo 68



Photo 69



Photo 70



Photo 71



Photo 72



Photo 73



Photo 74



Photo 75



Photo 76



Photo 77



Photo 78



Photo 79



Photo 80



Photo 81



Photo 82



Photo 83



Photo 84



Photo 85



Photo 86



Photo 87



Photo 88



Photo 89



Photo 90



Photo 91



Photo 92



Photo 93



Photo 94



Photo 95



Photo 96



Photo 97



Photo 98



Photo 99



Photo 100



Photo 101



Photo 102



Photo 103



Photo 104



Photo 105



Photo 106



Photo 107



Photo 108



Photo 109



Photo 110



Photo 111



Photo 112



Photo 113



Photo 114



Photo 115



Photo 116



Photo 117



Photo 118



Photo 119



Photo 120

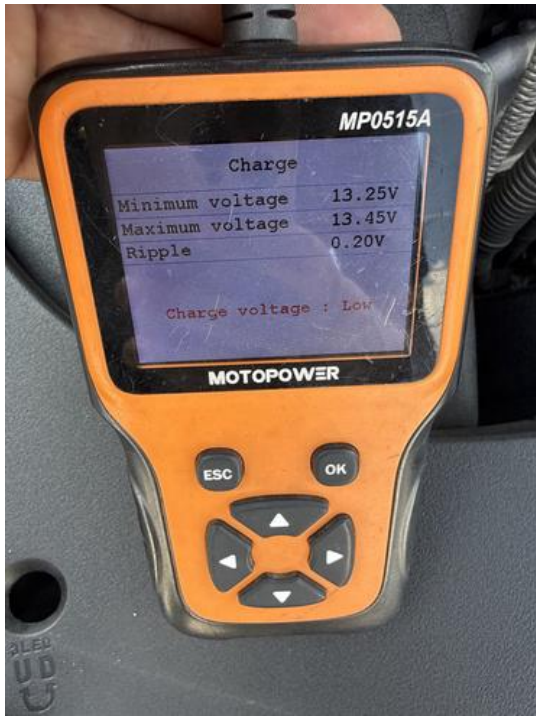


Photo 121



Photo 122



Photo 123



Photo 124



Photo 125



Photo 126



Photo 127



Photo 128



Photo 129



Photo 130



Photo 131



Photo 132



Photo 133



Photo 134



Photo 135



Photo 136



Photo 137



Photo 138



Photo 139



Photo 140



Photo 141

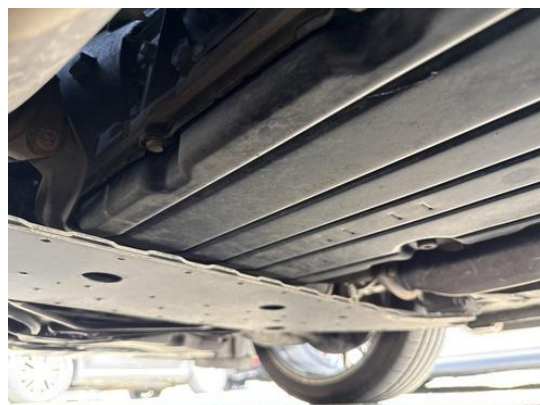


Photo 142



Photo 143



Photo 144



Photo 145



Photo 146

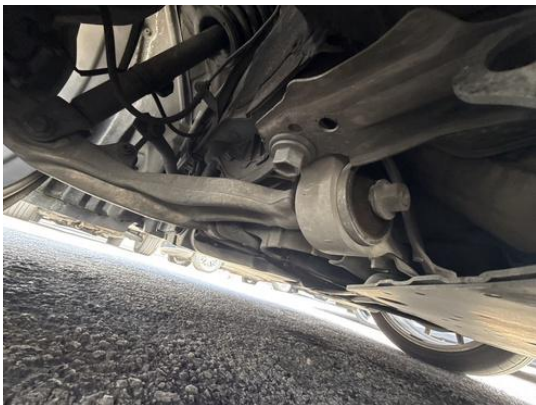


Photo 147



Photo 148



Photo 149

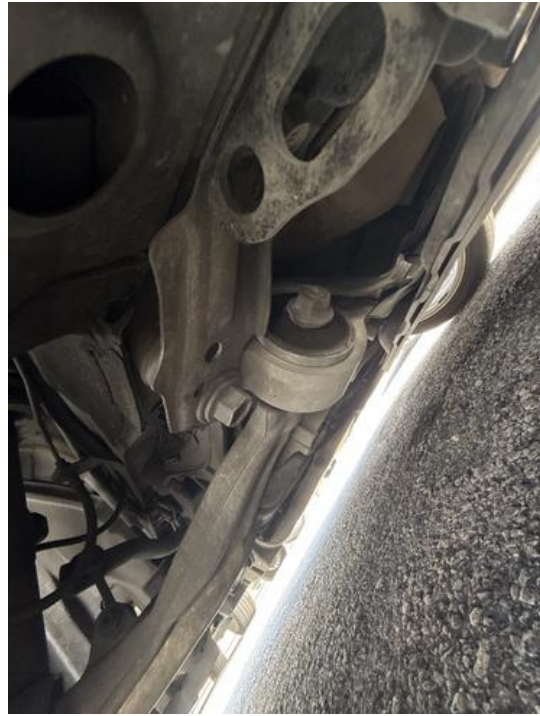


Photo 150



Photo 151



Photo 152



Photo 153



Photo 154



Photo 155



Photo 156



Photo 157



Photo 158



Photo 159



Photo 160



Photo 161



Photo 162

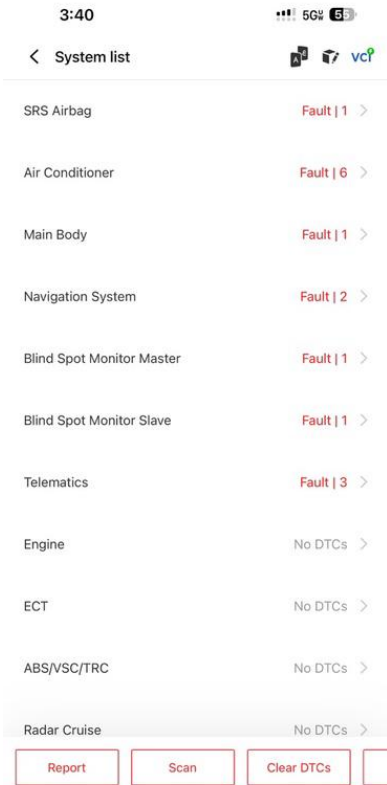


Photo 163

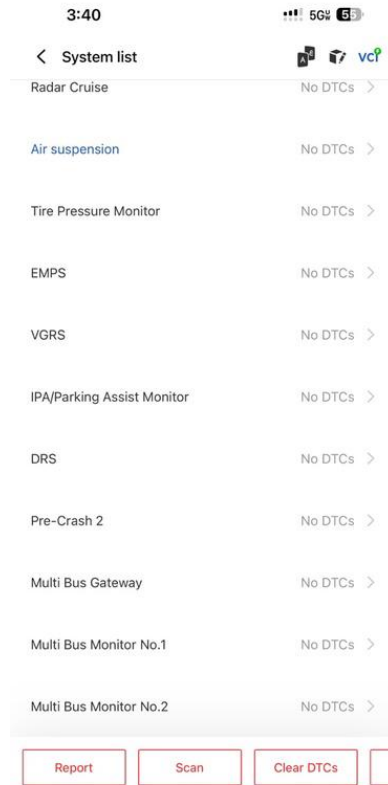


Photo 164

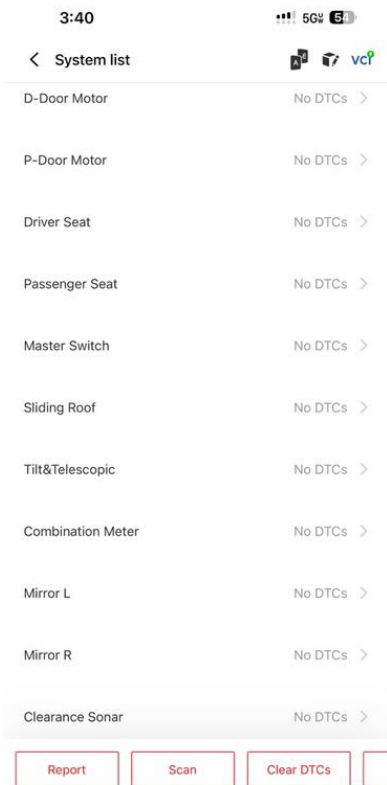


Photo 165

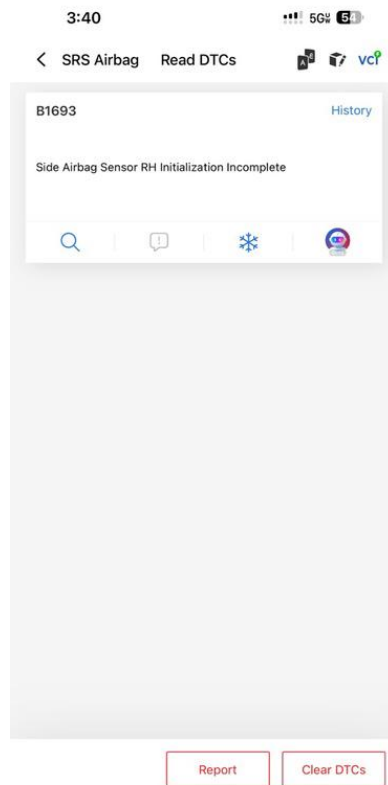


Photo 166

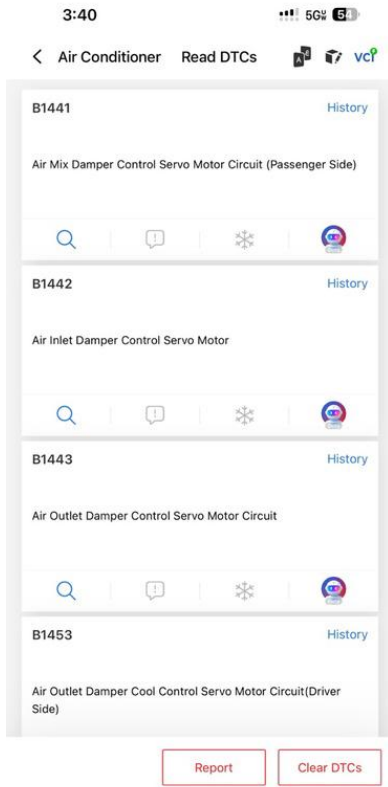


Photo 167

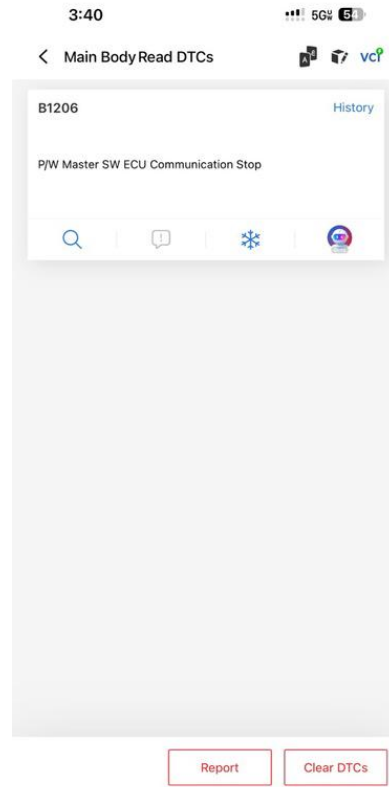


Photo 168

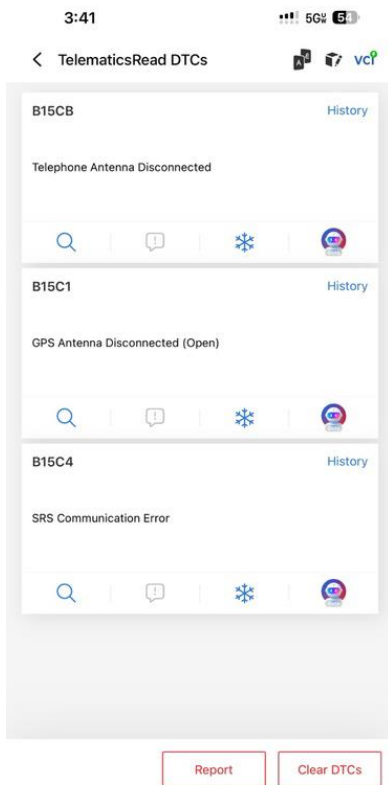


Photo 169

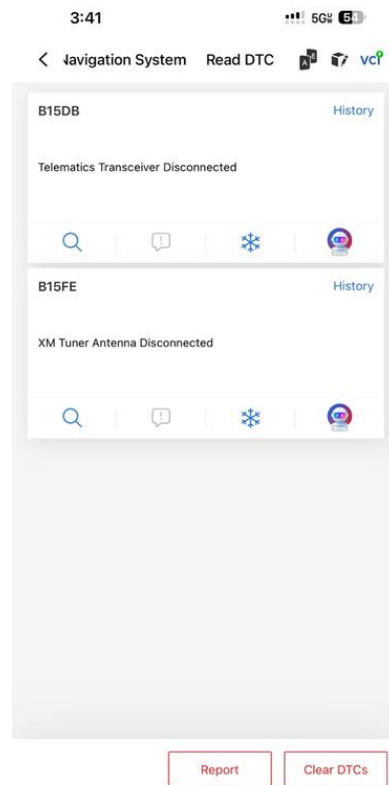


Photo 170