


Peace of Mind Automotive Inspection Report.

Joe Trejo Jr.
210-557-0686

Peace of Mind Automotive Inspection Report.
Joe Trejo Jr.
210-557-0686

Complete

| | | | | | |
|---|---------------------------|---------------|---|---------|---|
| Score | 4 / 4 (100%) | Flagged items | 1 | Actions | 0 |
| Site conducted | Unanswered | | | | |
| Customer name | Luis LMJ auto motor sales | | | | |
| Date / Time | Jan 21st | | | | |
| Payment method | Invoice | | | | |
| Inspection cost | 199 | | | | |
| Vehicle Year / Make / Model / Color | 2017 dodge ram 1500 | | | | |
| VIN | 14562 last 5 | | | | |
| <div></div> <div>Photo 1</div> | | | | | |
| license plate | Dealer | | | | |
| Mileage | 106427 | | | | |
| Color | White | | | | |

Flagged items

1 flagged

Steering system condition

Abnormal play / slack in steering

Present

Small amount of play/slack noticed in the steering, this is common for the mileage

| Interior Electrical Functions | | 2 / 2 (100%) |
|----------------------------------|--|------------------|
| Horn function | | Function correct |
| Interior lighting function | | Function correct |
| Power lock function | | Function correct |
| Power window function | | Function correct |
| Power seat function | | N/A |
| Power Doors / lift gate function | | N/A |
| Air conditioning below 60* | | Yes |
| Heater above 90* | | Yes |
| Climate controls function | | Function correct |
| Radio / display screen function | | Function correct |
| Speakers performing correctly | | Function correct |
| GPS function | | N/A |
| Satellite radio function | | N/A |
| 12V power supply function | | Function correct |
| Wireless charging function | | N/A |
| Cooled seat function | | N/A |
| Heated seat function | | N/A |
| Remote entry function | | Function correct |

ADDITIONAL NOTES

Vehicle interior electrical functionality is correct across-the-board, no inoperable functions.

| Interior Condition | | 0 / 0 (0%) |
|------------------------------|--|------------------|
| Seat belt function | | Function correct |
| Front seat condition | | Normal wear |
| Rear seat condition | | Normal wear |
| Carpeting condition | | Normal wear |
| Headliner condition | | Normal wear |
| Door panel condition | | Normal wear |
| Dashboard condition | | Normal wear |
| Headliner condition | | Normal wear |
| Center console condition | | Normal wear |
| Glove compartment condition | | Normal wear |
| Sun visor condition | | Normal wear |
| Trunk / Cargo area condition | | Normal wear |
| Trim pieces condition | | Normal wear |

ADDITIONAL NOTES

Normal wear to the interior as expected for the age and mileage on the vehicle. No water damage to the carpet or carpet installation. No rust on the bottom side of the dash. No evidence of flood damage present. No evidence of the vehicle being smoked inside. no severely damaged or missing panels. See all interior photos for evidence of current condition. [OBJ]



Photo 2



Photo 3



Photo 4



Photo 5



Photo 6



Photo 7



Photo 8



Photo 9



Photo 10



Photo 11



Photo 12



Photo 13



Photo 14



Photo 15



Photo 16



Photo 17



Photo 18



Photo 19



Photo 20



Photo 21



Photo 22



Photo 23



Photo 24



Photo 25



Photo 26



Photo 27



Photo 28



Photo 29



Photo 30



Photo 31



Photo 32



Photo 33

Exterior Body / Structural Condition

0 / 0 (0%)

Paint depth on metal body panels

Factory, matching paint depth on all exterior metal body panels. All exterior metal body panels are original to the vehicle. No structural damage presents nor any structural damage repair work done. No accident damage presents nor any accident damage repair work done. All window glass is original to the vehicle. Normal wear to the exterior as expected for the age and mileage including chips, scrapes, scratches and dings. Overall vehicle exterior is well-kept. See all exterior photos for evidence of current condition.



Photo 34



Photo 35



Photo 36



Photo 37



Photo 38



Photo 39



Photo 40



Photo 41



Photo 42



Photo 43



Photo 44



Photo 45



Photo 46



Photo 47



Photo 48



Photo 49



Photo 50



Photo 51



Photo 52



Photo 53



Photo 54



Photo 55



Photo 56



Photo 57



Photo 58



Photo 59



Photo 60



Photo 61



Photo 62



Photo 63



Photo 64



Photo 65



Photo 66



Photo 67



Photo 68



Photo 69



Photo 70



Photo 71



Photo 72



Photo 73



Photo 74



Photo 75



Photo 76



Photo 77

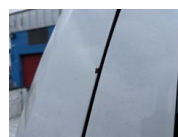


Photo 78

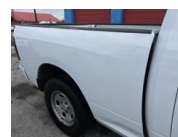


Photo 79



Photo 80



Photo 81



Photo 82



Photo 83



Photo 84



Photo 85



Photo 86



Photo 87



Photo 88



Photo 89



Photo 90



Photo 91



Photo 92



Photo 93



Photo 94



Photo 95



Photo 96



Photo 97



Photo 98



Photo 99



Photo 100



Photo 101



Photo 102



Photo 103



Photo 104



Photo 105



Photo 106



Photo 107



Photo 108



Photo 109



Photo 110



Photo 111



Photo 112



Photo 113



Photo 114



Photo 115



Photo 116



Photo 117



Photo 118



Photo 119



Photo 120



Photo 121



Photo 122



Photo 123



Photo 124



Photo 125

Front bumper condition

Normal wear

Rear bumper condition

Normal wear

Hood panel condition

Normal wear

Driver side fender condition

Normal wear

Passenger side fender condition

Normal wear

Roof panel condition

Normal wear

| | |
|---|-------------|
| Front driver side door Condition | Normal wear |
| Rear driver side door condition | N/A |
| Front passenger side door condition | Normal wear |
| Rear passenger side door condition | N/A |
| Driver side quarter panel condition | N/A |
| Passenger side quarter panel condition | N/A |
| Trunk panel condition | N/A |
| Truck Bed condition | Normal wear |
| Tail gate condition | Normal wear |
| Chassis / Frame condition | Normal wear |
| Frame rail condition | Normal wear |
| Subframe condition | Normal wear |
| Engine cradle condition | Normal wear |
| Skid / Dust cover condition | Normal wear |
| Collapse beam condition | Normal wear |
| Window trim condition | Normal wear |
| Weather stripping condition | Normal wear |
| Front windshield condition | Normal wear |
| Other window glass condition | Normal wear |
| Wheel / Hubcap condition | Normal wear |

ADDITIONAL NOTES

No excessive rust or corrosion to the frame/chassis vehicle has been utilized in a healthy climate throughout its lifespan

Tire condition

0 / 0 (0%)

Front driver side tire

50-75% remaining

All four tires are matching. All four tires are in healthy condition. Tires have right around 75% tread life remaining all around.



Photo 126



Photo 127

Front passenger side tire

50-75% remaining



Photo 128



Photo 129



Photo 130

Rear driver side tire

50-75% remaining



Photo 131



Photo 132

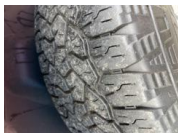


Photo 133

Rear passenger side tire

50-75% remaining



Photo 134



Photo 135



Photo 136

Spare tire and equipment

Spare and tools present

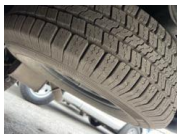


Photo 137

Battery / charging system

0 / 0 (0%)

Battery date

Na

Standing voltage

12.8



Photo 138

Loaded voltage

14.6

Battery is accepting the charge from the alternator and the alternator charge output is correct



Photo 139

Engine Testing / Condition

2 / 2 (100%)

Internal engine inspection w/ borescope camera

Engine clean internally, no gunk or sludge presents. Proper signs of maintenance present. Block test passed, no internal combustion leak out. Coolant mixture correct and cooling system functionality is healthy. All external engine accessories in good working. No leaks or seepage from anywhere on the engine. External drive belts in decent condition. Currently no concern in mechanical issues present in relation to the engine or related accessories.



Photo 140



Photo 141



Photo 142



Photo 143



Photo 144



Photo 145

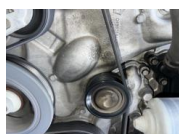


Photo 146



Photo 147



Photo 148

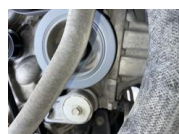


Photo 149



Photo 150



Photo 151



Photo 152



Photo 153














Photo 154



Photo 155

| | |
|--------------------------------------|-------------|
| Engine block test | Pass |
| Coolant mixture test | Pass |
| Air filter condition | Normal wear |
| Engine oil condition | Normal wear |
| Engine oil level | Healthy |
| Engine oil leaks | None |
| Coolant level | Healthy |
| Coolant hoses | Healthy |
| Radiator condition / function | Healthy |
| Engine operating temperature | Healthy |
| Cooling fan function | Healthy |
| Drive belt condition | Healthy |
| Abnormal engine knock | None |

| | |
|------------------------------------|---------|
| Abnormal valve train rattle | None |
| Abnormal bearing noises | None |
| Engine gunk / sludge | None |
| Fuel tank | Healthy |
| Fuel injectors / lines | Healthy |
| Valve cover gaskets | Healthy |
| Intake manifold gasket | Healthy |
| Cylinder head gasket | Healthy |
| Oil pan gasket | Healthy |
| Timing cover gasket | Healthy |
| Rear main seal | Healthy |
| Timing belt / components | Healthy |
| Exhaust manifold | Healthy |
| External engine accessories | Healthy |

| | |
|--|------------|
| Transmission / Differentials | 0 / 0 (0%) |
| Transmission fluid level | Healthy |
| Transmission fluid condition | Healthy |
| Transmission fluid leaks | None |
| <p>No transmission fluid leak out from the transmission casing or the transmission pan area. Drive shaft and seal is free of any fluid leaks. The rear differential is free of any fluid leak out. Shift transitions out on the road are correct across the board.</p> | |
| <div>       </div> <div> Photo 156 Photo 157 Photo 158 Photo 159 Photo 160 Photo 161 </div> | |
| Transmission cooler / lines | Healthy |
| Front differential condition | N/A |
| Center differential condition | N/A |
| Rear differential condition | Healthy |
| <div>      </div> <div> Photo 162 Photo 163 Photo 164 Photo 165 Photo 166 </div> | |
| Differential leaks | None |
| 4x4 function / engagement | N/A |
| Clutch engagement | Healthy |
| Gear engagement | Healthy |
| Shift transitions | Healthy |
| Drive shaft condition | Healthy |

Suspension condition

0 / 0 (0%)

Front shocks / struts

Healthy

Normal fatigue notice to the suspension components. All of the suspension components seem to be original. None of the suspension components are blown out and due form the replacement. The No excessive surface rust on the exposed metal. No abnormal noise or feedback from the suspension while out on the road. All of the rubber in relation to the mounts, joints and bushings has decent texture.



Photo 167



Photo 168



Photo 169



Photo 170



Photo 171



Photo 172



Photo 173



Photo 174



Photo 175

Rear shocks / struts

Healthy



Photo 176



Photo 177



Photo 178



Photo 179



Photo 180



Photo 181



Photo 182



Photo 183

Control arms upper

Healthy

Control arms lower

Healthy

Ball joints

Healthy

Bushings

Healthy

Torsion bars

Healthy

Coilover function

N/A

Air ride function

N/A

Airbag condition





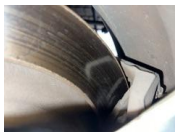


N/A

Abnormal rust / corrosion to metals

None

Deterioration of rubbers

None

| | |
|--|-------------------|
| Braking system condition | 0 / 0 (0%) |
| Brake fluid condition | Healthy |
| Brake fluid level | Healthy |
| Brake fluid leaks | None |
| Moisture content in brake fluid | None |
| Brake lines | Healthy |
| Brake calipers front | Healthy |
| Brake calipers rear | Healthy |
| Brake drums rear | N/A |
| Brake rotors front | Healthy |
| Brake rotors rear | Healthy |
| Front brake pad life remaining | 75-100% remaining |
| Over 80% brake pad life remaining on the front brake system | |
| <div>    </div> <div> Photo 184 Photo 185 Photo 186 </div> | |
| Rear brake pad life remaining | 50-75% remaining |
| Right around 55% brake pad life remaining on the rear brake system | |
| <div>     </div> <div> Photo 187 Photo 188 Photo 189 Photo 190 </div> | |
| E-brake function | Healthy |

| Steering system condition | 1 flagged, 0 / 0 (0%) |
|---|-----------------------|
| Steering wheel | Healthy |
| Steering column | Healthy |
| Steering knuckle / shaft | Healthy |
| Steering box | N/A |
| Rack and pinion condition | Healthy |
| Inner tie rods | Healthy |
| outer tie rods | Healthy |
| Rack boots | Healthy |
| Power steering pump | N/A |
| power steering lines | N/A |
| Power steering leaks | N/A |
| Power steering fluid level | N/A |
| Electric steering motor | Healthy |
| Abnormal play / slack in steering | Present |
| Small amount of play/slack noticed in the steering, this is common for the mileage | |
| Steering alignment on road | Issue present |
| Steering alignment is slightly off to the left while driving this is relatively minimal | |

Computer diagnostic scan

0 / 0 (0%)

Engine control module

Healthy

All of the control modules on the vehicle were free of any live/active diagnostic fault codes. All live feed diagnostic testing was successfully passed. All live feed emissions testing was successfully passed. There were a few historical diagnostic fats. None of these codes were live/active and not of any concern.

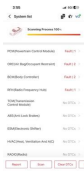


Photo 191

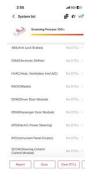


Photo 192



Photo 193



Photo 194



Photo 195



Photo 196

Transmission control module

Healthy

Anti lock brake (ABS) module

Healthy

SRS module

Healthy

hybrid control module

Suspension control module

Vehicle road test

0 / 0 (0%)

Vehicle road test comments / concerns

Overall, the vehicle functionality is correct, no major/concerning drive ability, abnormalities or issues.
Normal drivability characteristics, present as expected for the age and mileage on this specific vehicle.

Value of vehicle / Diminished value due to repairs or current damage

0 / 0 (0%)

No diminished value due to no structural damage presence or any structural damage repair work done

Media summary



Photo 1



Photo 2



Photo 3



Photo 4



Photo 5



Photo 6



Photo 7



Photo 8



Photo 9



Photo 10

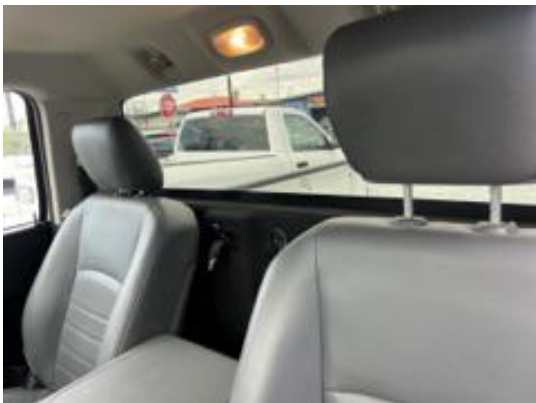


Photo 11



Photo 12



Photo 13



Photo 14



Photo 15



Photo 16



Photo 17



Photo 18



Photo 19



Photo 20



Photo 21



Photo 22



Photo 23



Photo 24

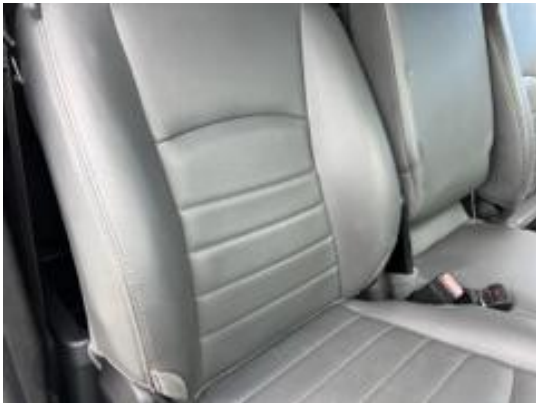


Photo 25



Photo 26



Photo 27



Photo 28



Photo 29



Photo 30



Photo 31



Photo 32



Photo 33



Photo 34



Photo 35



Photo 36



Photo 37



Photo 38



Photo 39



Photo 40



Photo 41



Photo 42



Photo 43



Photo 44



Photo 45



Photo 46



Photo 47



Photo 48



Photo 49



Photo 50



Photo 51



Photo 52



Photo 53



Photo 54



Photo 55



Photo 56



Photo 57



Photo 58



Photo 59



Photo 60



Photo 61



Photo 62



Photo 63



Photo 64



Photo 65



Photo 66



Photo 67



Photo 68

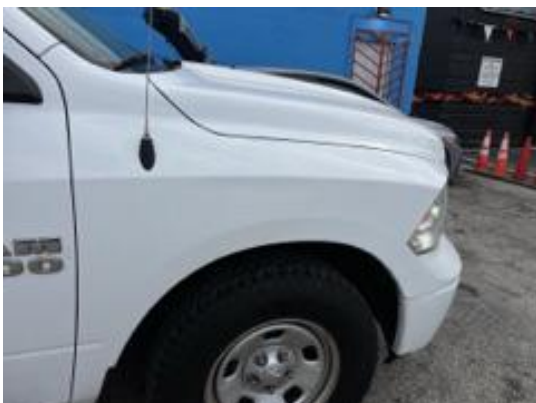


Photo 69



Photo 70



Photo 71



Photo 72



Photo 73



Photo 74



Photo 75



Photo 76



Photo 77



Photo 78



Photo 79



Photo 80



Photo 81



Photo 82



Photo 83



Photo 84



Photo 85



Photo 86



Photo 87



Photo 88



Photo 89



Photo 90



Photo 91



Photo 92



Photo 93



Photo 94



Photo 95



Photo 96



Photo 97



Photo 98



Photo 99



Photo 100



Photo 101



Photo 102



Photo 103



Photo 104



Photo 105



Photo 106



Photo 107



Photo 108



Photo 109



Photo 110



Photo 111



Photo 112



Photo 113



Photo 114



Photo 115



Photo 116



Photo 117



Photo 118



Photo 119



Photo 120



Photo 121



Photo 122



Photo 123



Photo 124



Photo 125



Photo 126



Photo 127



Photo 128



Photo 129



Photo 130



Photo 131



Photo 132

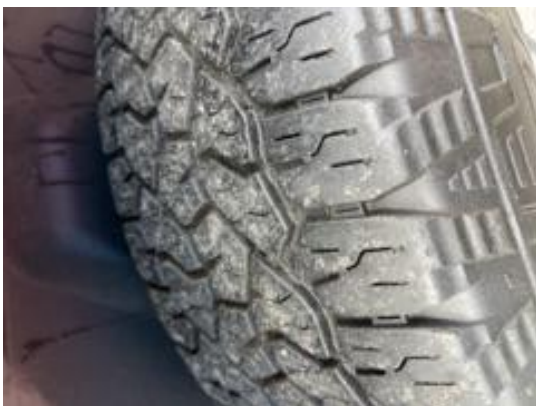


Photo 133



Photo 134



Photo 135



Photo 136



Photo 137



Photo 138



Photo 139



Photo 140



Photo 141



Photo 142



Photo 143



Photo 144



Photo 145



Photo 146



Photo 147



Photo 148



Photo 149



Photo 150



Photo 151



Photo 152



Photo 153



Photo 154



Photo 155



Photo 156



Photo 157



Photo 158



Photo 159



Photo 160



Photo 161



Photo 162



Photo 163



Photo 164



Photo 165



Photo 166



Photo 167



Photo 168



Photo 169



Photo 170



Photo 171



Photo 172



Photo 173



Photo 174



Photo 175



Photo 176



Photo 177



Photo 178



Photo 179



Photo 180



Photo 181



Photo 182



Photo 183

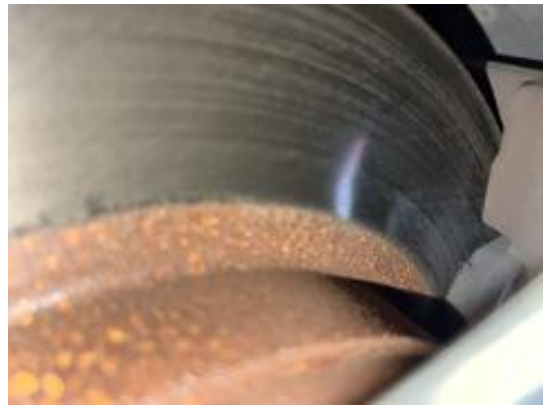


Photo 184



Photo 185



Photo 186



Photo 187

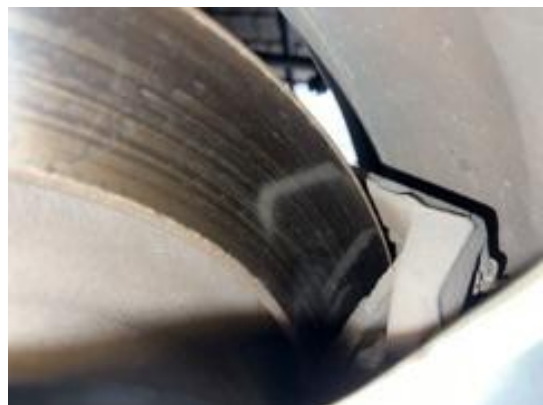


Photo 188



Photo 189



Photo 190



Photo 191

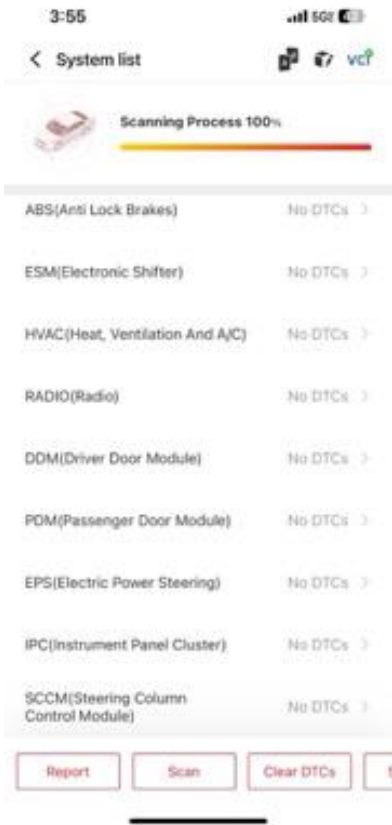


Photo 192



Photo 193

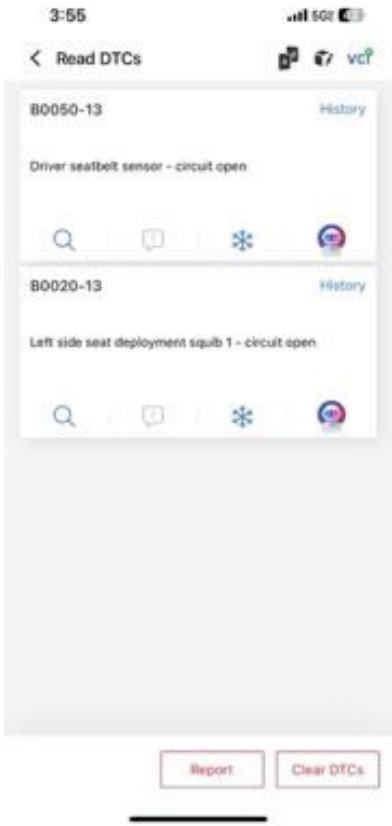


Photo 194

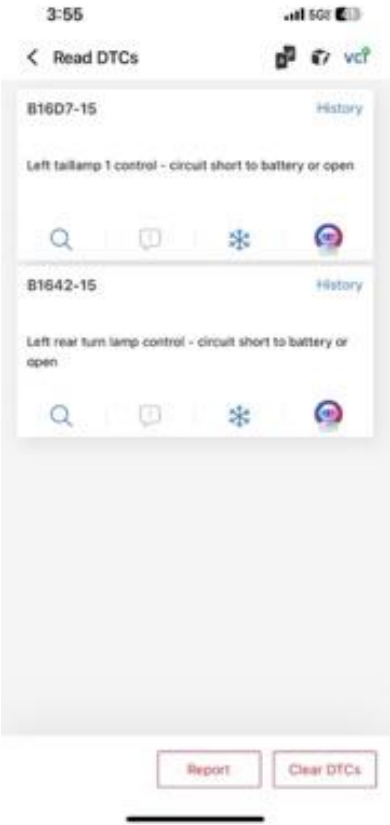


Photo 195



Photo 196