




Peace of Mind Automotive Inspection Report.

Joe Trejo Jr.
210-557-0686

Complete

Score	4 / 4 (100%)	Flagged items	0	Actions	0
Site conducted					Unanswered
Customer name					Luis LMJ auto motor sales
Date / Time					April 6th
Payment method					Invoice
Inspection cost					Fleet
Vehicle Year / Make / Model / Color					2017 jeep grand Cherokee
VIN					00262 last 5
					
license plate					Dealer
Mileage					117206
Color					Grey

Interior Electrical Functions	2 / 2 (100%)
Horn function	Function correct
Interior lighting function	Function correct
Power lock function	Function correct
Power window function	Function correct
Power seat function	Function correct
Power Doors / lift gate function	N/A
Air conditioning below 60*	Yes
Heater above 90*	Yes
Climate controls function	Function correct
Radio / display screen function	Function correct
Speakers performing correctly	Function correct
GPS function	Function correct
Satellite radio function	Function correct
12V power supply function	Function correct
Wireless charging function	N/A
Cooled seat function	Function correct
Heated seat function	Function correct
Remote entry function	Function correct

ADDITIONAL NOTES

Vehicle interior electrical functionality is correct across the board, no inoperable functions.

Interior Condition	
Seat belt function	Function correct
Front seat condition	Normal wear
Rear seat condition	Normal wear
Carpeting condition	Normal wear
Headliner condition	Normal wear
Door panel condition	Normal wear
Dashboard condition	Normal wear
Headliner condition	Normal wear
Center console condition	Normal wear
Glove compartment condition	Normal wear
Sun visor condition	Normal wear
Trunk / Cargo area condition	Normal wear
Trim pieces condition	Normal wear

ADDITIONAL NOTES

Normal wear to the interior as expected for the age and mileage on the vehicle. No water damage to the carpet or carpet installation. No rust on the bottom side of the dash. No evidence of flood damage present. No evidence of the vehicle being smoked inside. no severely damaged or missing panels. See all interior photos for evidence of current condition.



Photo 2



Photo 3



Photo 4



Photo 5



Photo 6



Photo 7



Photo 8



Photo 9



Photo 10



Photo 11



Photo 12



Photo 13



Photo 14



Photo 15



Photo 16



Photo 17



Photo 18



Photo 19



Photo 20



Photo 21



Photo 22



Photo 23



Photo 24



Photo 25



Photo 26



Photo 27



Photo 28



Photo 29

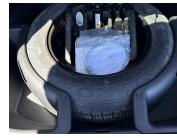


Photo 30



Photo 31



Photo 32



Photo 33



Photo 34



Photo 35

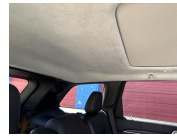


Photo 36

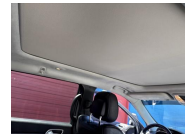


Photo 37



Photo 38



Photo 39



Photo 40



Photo 41

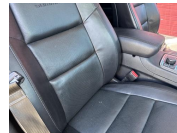


Photo 42



Photo 43

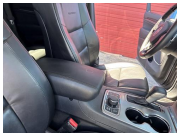


Photo 44



Photo 45



Photo 46



Photo 47



Photo 48

Exterior Body / Structural Condition

Paint depth on metal body panels

matching paint depth on all exterior metal body panels. All exterior metal body panels are original to the vehicle. No structural damage presents nor any structural damage repair work done. No accident damage presents nor any accident damage repair work done . All window glass is original to the vehicle. Normal wear to the exterior as expected for the age and mileage including chips, scrapes, scratches and dings. Overall vehicle exterior is well-kept. See all exterior photos for evidence of current condition.



Photo 49



Photo 50



Photo 51



Photo 52



Photo 53



Photo 54



Photo 55



Photo 56



Photo 57



Photo 58



Photo 59



Photo 60



Photo 61



Photo 62



Photo 63



Photo 64



Photo 65



Photo 66



Photo 67



Photo 68



Photo 69



Photo 70



Photo 71



Photo 72



Photo 73



Photo 74



Photo 75

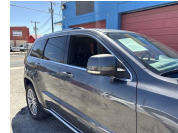


Photo 76



Photo 77



Photo 78



Photo 79



Photo 80



Photo 81



Photo 82



Photo 83



Photo 84



Photo 85



Photo 86



Photo 87



Photo 88



Photo 89



Photo 90



Photo 91



Photo 92



Photo 93



Photo 94



Photo 95



Photo 96



Photo 97



Photo 98



Photo 99



Photo 100



Photo 101



Photo 102



Photo 103



Photo 104



Photo 105



Photo 106



Photo 107



Photo 108



Photo 109



Photo 110



Photo 111



Photo 112

Front bumper condition	Normal wear
Rear bumper condition	Normal wear
Hood panel condition	Normal wear
Driver side fender condition	Normal wear
Passenger side fender condition	Normal wear
Roof panel condition	Normal wear
Front driver side door Condition	Normal wear
Rear driver side door condition	Normal wear
Front passenger side door condition	Normal wear
Rear passenger side door condition	Normal wear
Driver side quarter panel condition	Normal wear
Passenger side quarter panel condition	Normal wear
Trunk panel condition	Normal wear
Truck Bed condition	N/A
Tail gate condition	N/A
Chassis / Frame condition	Normal wear
Frame rail condition	Normal wear

Subframe condition	Normal wear
Engine cradle condition	Normal wear
Skid / Dust cover condition	Normal wear
Collapse beam condition	Normal wear
Window trim condition	Normal wear
Weather stripping condition	Normal wear
Front windshield condition	Normal wear
Other window glass condition	Normal wear
Wheel / Hubcap condition	Normal wear

ADDITIONAL NOTES

Tire condition**Front driver side tire**

50-75% remaining

All four tires are matching. Tires are dated from 2021. All four tires are evenly worn and have right about 50% tread life remaining all around.



Photo 113



Photo 114



Photo 115

Front passenger side tire

50-75% remaining



Photo 116

Rear driver side tire

50-75% remaining



Photo 117



Photo 118

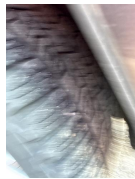


Photo 119

Rear passenger side tire

50-75% remaining



Photo 120



Photo 121



Photo 122

Spare tire and equipment

Spare and tools present

Battery / charging system

Battery date No date sticker

Standing voltage 12.8

Loaded voltage 14.7

Battery is accepting the charge from the alternator and the alternator charge output is correct



Photo 123

Engine Testing / Condition

2 / 2 (100%)

Internal engine inspection w/ borescope camera

Engine clean internally, no gunk or sludge presents. Proper signs of maintenance present. Block test passed, no internal combustion leak out. Coolant mixture correct and cooling system functionality is healthy. All external engine accessories in good working. No leaks or seepage from anywhere on the engine. External drive belts in decent condition. Currently no concern in mechanical issues present in relation to the engine or related accessories.



Photo 124

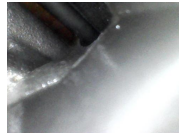


Photo 125

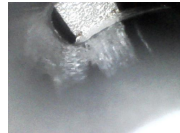


Photo 126



Photo 127



Photo 128



Photo 129



Photo 130



Photo 131



Photo 132



Photo 133



Photo 134



Photo 135

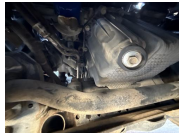


Photo 136

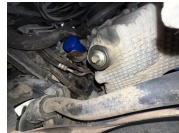


Photo 137

Engine block test	Pass
Coolant mixture test	Pass
Air filter condition	Normal wear
Engine oil condition	Normal wear
Engine oil level	Healthy
Engine oil leaks	None
Coolant level	Healthy
Coolant hoses	Healthy
Radiator condition / function	Healthy
Engine operating temperature	Healthy
Cooling fan function	Healthy
Drive belt condition	Healthy

Abnormal engine knock	None
Abnormal valve train rattle	None
Abnormal bearing noises	None
Engine gunk / sludge	None
Fuel tank	Healthy
Fuel injectors / lines	Healthy
Valve cover gaskets	Healthy
Intake manifold gasket	Healthy
Cylinder head gasket	Healthy
Oil pan gasket	Healthy
Timing cover gasket	Healthy
Rear main seal	Healthy
Timing belt / components	Healthy
Exhaust manifold	Healthy
External engine accessories	Healthy

Transmission / Differentials

Transmission fluid level	Healthy
---------------------------------	---------

Transmission fluid condition	Healthy
-------------------------------------	---------

Transmission fluid leaks	None
---------------------------------	------

No transmission fluid leaks from the transmission casing or the transmission pan area. The front differential, center differential and rear differential are all free of any fluid leaks. 4 x 4 system functionality is correct. Shift transitioned out on the road are correct.



Photo 138



Photo 139

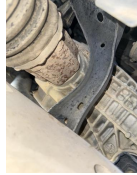


Photo 140



Photo 141



Photo 142



Photo 143

Transmission cooler / lines	Healthy
------------------------------------	---------

Front differential condition	Healthy
-------------------------------------	---------

Center differential condition	Healthy
--------------------------------------	---------

Rear differential condition	Healthy
------------------------------------	---------



Photo 144



Photo 145



Photo 146

Differential leaks	None
---------------------------	------

4x4 function / engagement	Healthy
----------------------------------	---------

Clutch engagement	Healthy
--------------------------	---------

Gear engagement	Healthy
------------------------	---------

Shift transitions	Healthy
--------------------------	---------

Drive shaft condition	Healthy
------------------------------	---------

Suspension condition

Front shocks / struts

Healthy

Normal fatigue notice to the suspension components. All of the suspension components seem to be original. None of the suspension components are blown out and due form the replacement. The No excessive surface rust on the exposed metal. No abnormal noise or feedback from the suspension while out on the road. All of the rubber in relation to the mounts, joints and bushings has decent texture.



Photo 147

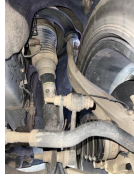


Photo 148



Photo 149



Photo 150



Photo 151



Photo 152



Photo 153



Photo 154

Rear shocks / struts

Healthy

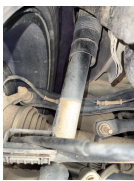


Photo 155



Photo 156



Photo 157



Photo 158



Photo 159



Photo 160



Photo 161

Control arms upper

Healthy

Control arms lower

Healthy

Ball joints

Healthy

Bushings

Healthy

Torsion bars

Healthy

Coilover function

N/A

Air ride function

Healthy

Airbag condition





Healthy

Abnormal rust / corrosion to metals

None

Deterioration of rubbers

None

Braking system condition	
Brake fluid condition	Healthy
Brake fluid level	Healthy
Brake fluid leaks	None
Moisture content in brake fluid	None
Brake lines	Healthy
Brake calipers front	Healthy
Brake calipers rear	Healthy
Brake drums rear	N/A
Brake rotors front	Healthy
Brake rotors rear	Healthy
Front brake pad life remaining	50-75% remaining
<p>Right about 50% brake pad light remaining on the front brake system and right about 30% brake pad life remaining on the rear brake system</p>	
 <p>Photo 162</p>	 <p>Photo 163</p>
Rear brake pad life remaining	25-50% remaining
 <p>Photo 164</p>	 <p>Photo 165</p>
E-brake function	Healthy

Steering system condition	
Steering wheel	Healthy
Steering column	Healthy
Steering knuckle / shaft	Healthy
Steering box	N/A
Rack and pinion condition	Healthy
Inner tie rods	Healthy
outer tie rods	Healthy
Rack boots	Healthy
Power steering pump	N/A
power steering lines	N/A
Power steering leaks	N/A
Power steering fluid level	N/A
Electric steering motor	Healthy
Abnormal play / slack in steering	None
Steering alignment on road	Healthy

Computer diagnostic scan

Engine control module

Healthy

All of the main control modules on the vehicle are free of any live/active diagnostic fault codes. All of the live feed diagnostic test testing was successfully passed. At the time of the inspection there are no active warning lights present on the vehicle.



Photo 166



Photo 167



Photo 168



Photo 169



Photo 170



Photo 171



Photo 172



Photo 173



Photo 174

Transmission control module

Healthy

Anti lock brake (ABS) module

Healthy

SRS module

Healthy

hybrid control module

N/A

Suspension control module

N/A

Vehicle road test

Vehicle road test comments / concerns

Overall, the vehicle functionality is correct out on the road across the board. No drive abnormalities or issues present. Normal drive characteristics present as expected for the age and mileage on this specific vehicle.

Value of vehicle / Diminished value due to repairs or current damage

No diminished value due to no structural damage presents nor any structural damage repair work done



Photo 7



Photo 8



Photo 9



Photo 10



Photo 11



Photo 12



Photo 13



Photo 14



Photo 15



Photo 16



Photo 17



Photo 18



Photo 19



Photo 20



Photo 21



Photo 22

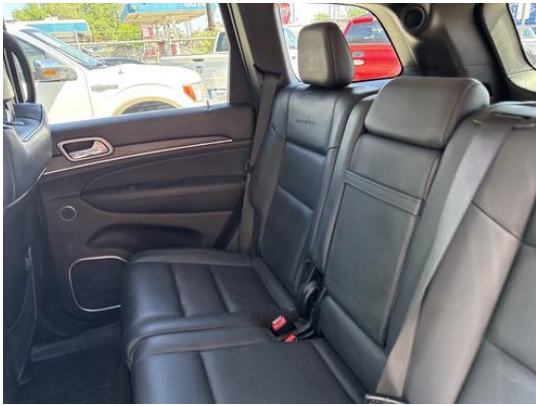


Photo 23



Photo 24



Photo 25



Photo 26



Photo 27



Photo 28



Photo 29



Photo 30



Photo 31



Photo 32

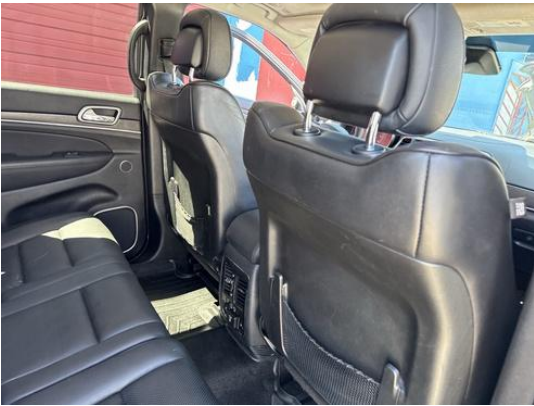


Photo 33

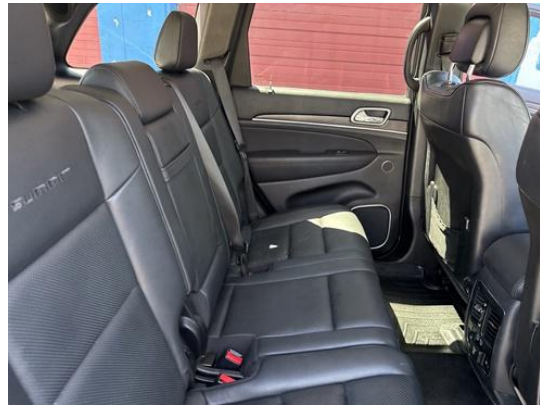


Photo 34



Photo 35



Photo 36



Photo 37



Photo 38



Photo 39



Photo 40



Photo 41



Photo 42

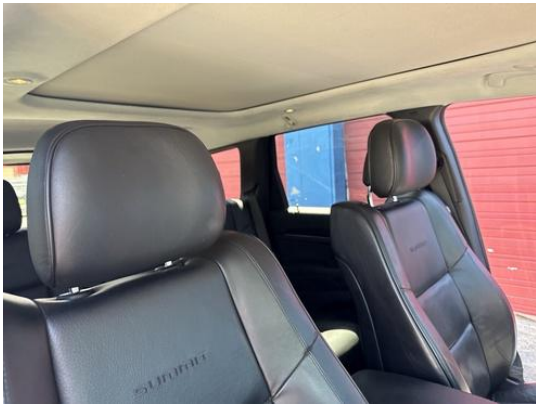


Photo 43



Photo 44



Photo 45



Photo 46



Photo 47



Photo 48



Photo 49



Photo 50



Photo 51



Photo 52



Photo 53



Photo 54



Photo 55



Photo 56



Photo 57



Photo 58



Photo 59



Photo 60



Photo 61



Photo 62



Photo 63



Photo 64



Photo 65



Photo 66



Photo 67



Photo 68



Photo 69



Photo 70



Photo 71



Photo 72



Photo 73



Photo 74



Photo 75



Photo 76



Photo 77



Photo 78



Photo 79



Photo 80



Photo 81



Photo 82



Photo 83



Photo 84



Photo 85



Photo 86



Photo 87



Photo 88



Photo 89



Photo 90



Photo 91



Photo 92



Photo 93



Photo 94



Photo 95



Photo 96



Photo 97



Photo 98



Photo 99



Photo 100



Photo 101



Photo 102



Photo 103



Photo 104



Photo 105



Photo 106



Photo 107



Photo 108



Photo 109



Photo 110



Photo 111



Photo 112



Photo 113



Photo 114



Photo 115



Photo 116



Photo 117



Photo 118



Photo 119



Photo 120



Photo 121



Photo 122

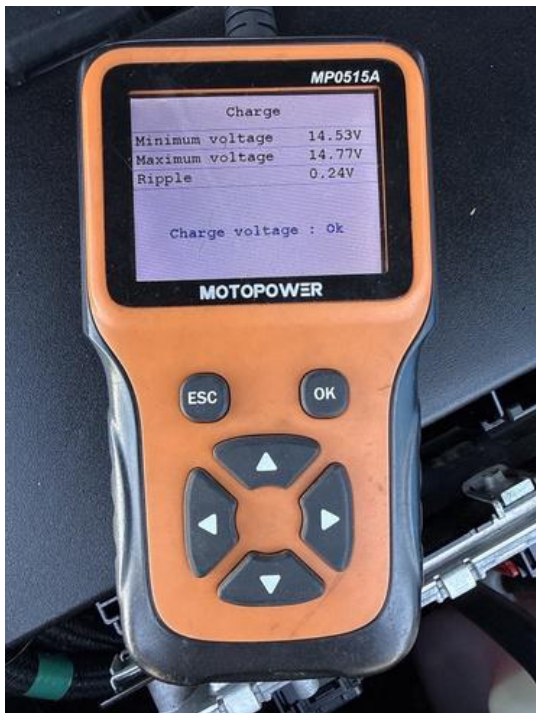


Photo 123



Photo 124

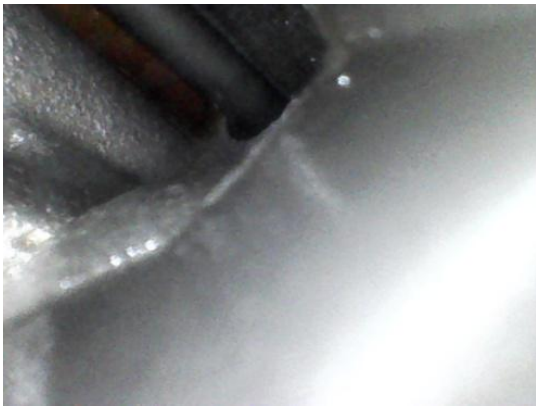


Photo 125

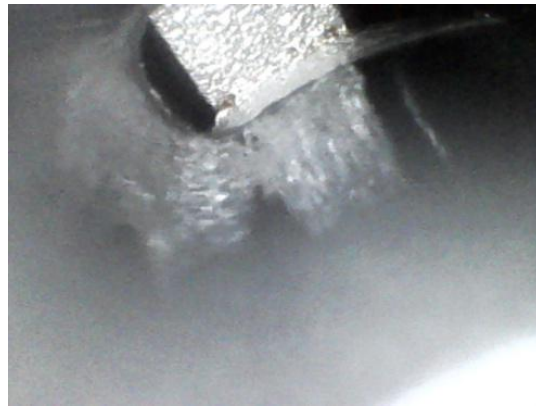


Photo 126



Photo 127



Photo 128



Photo 129



Photo 130



Photo 131



Photo 132



Photo 133

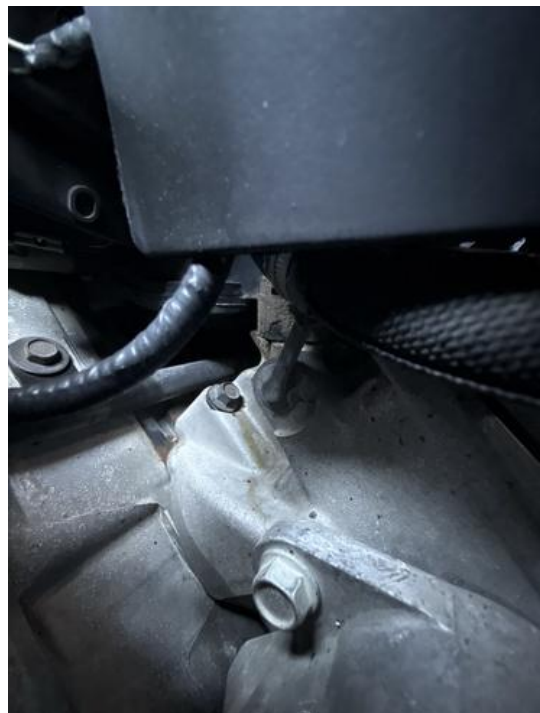


Photo 134



Photo 135



Photo 136

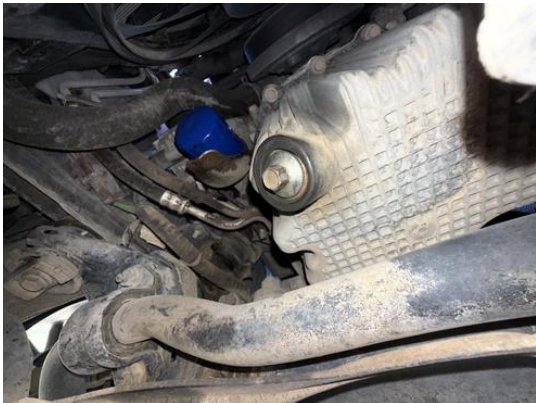


Photo 137



Photo 138



Photo 139



Photo 140



Photo 141



Photo 142



Photo 143



Photo 144



Photo 145



Photo 146



Photo 147



Photo 148



Photo 149



Photo 150



Photo 151



Photo 152



Photo 153



Photo 154



Photo 155



Photo 156



Photo 157



Photo 158



Photo 159

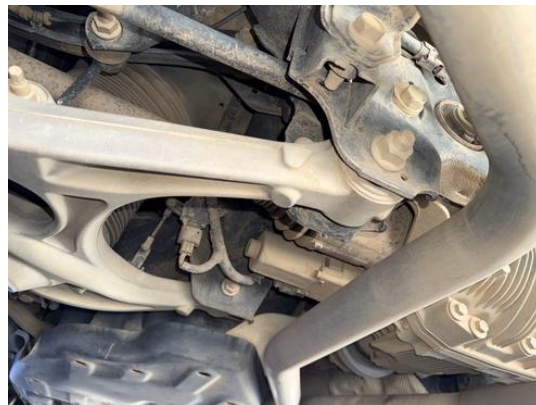


Photo 160



Photo 161



Photo 162



Photo 163



Photo 164



Photo 165

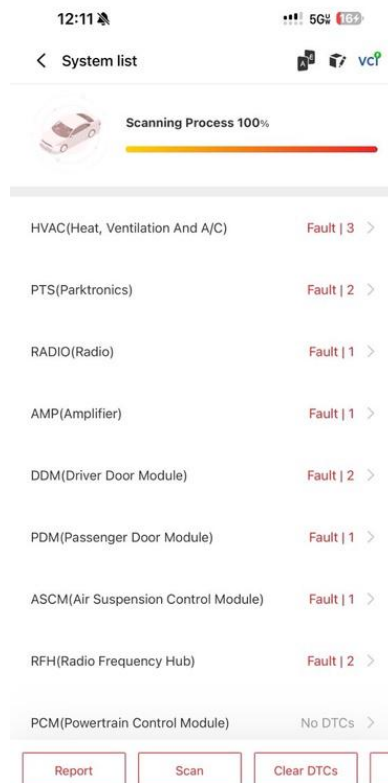


Photo 166

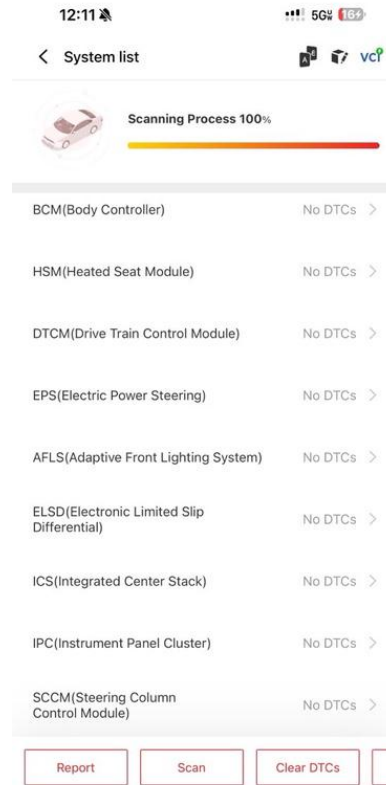
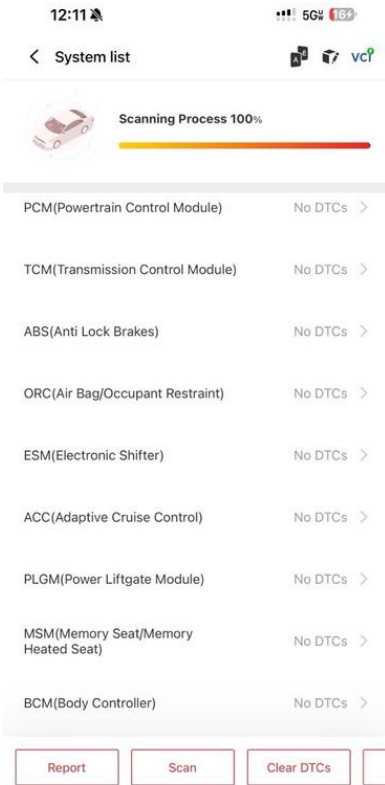


Photo 167

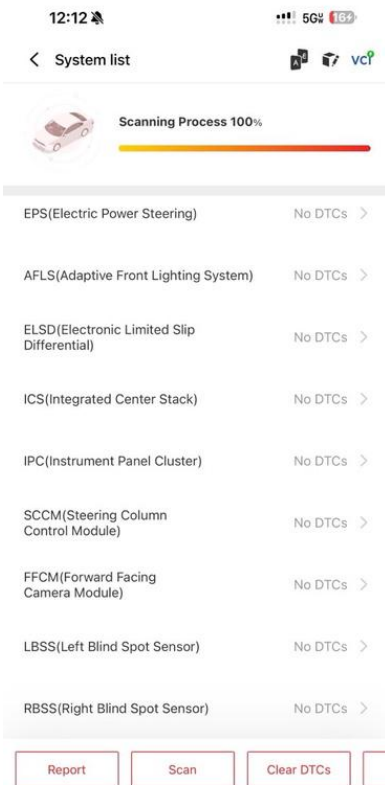


Photo 169

Photo 168

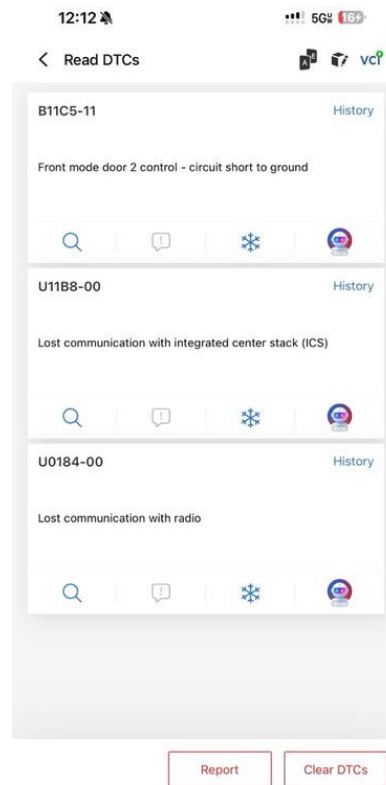


Photo 170

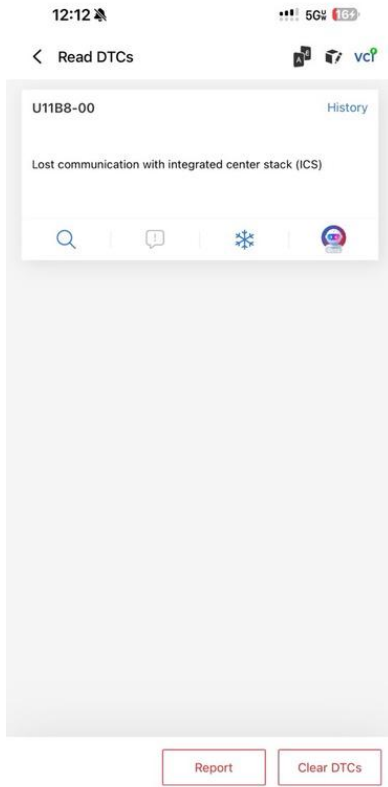


Photo 171

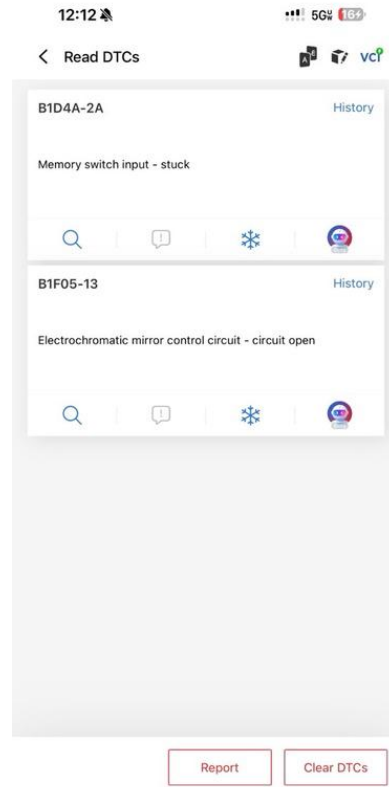


Photo 172

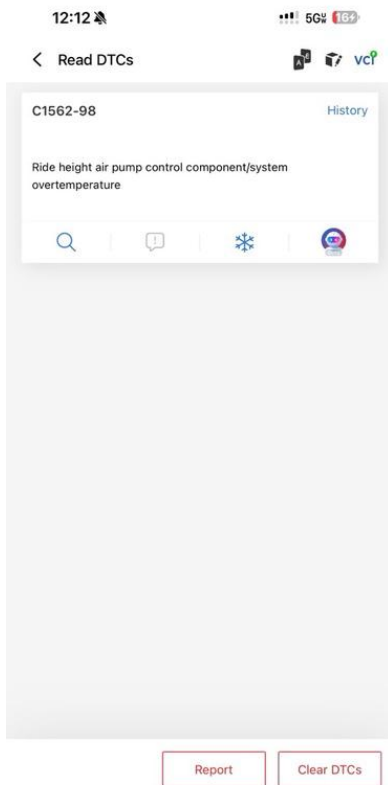


Photo 173

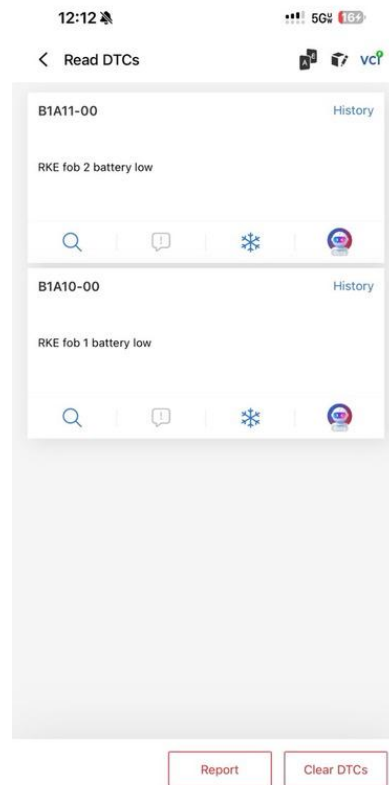


Photo 174