




## Peace of Mind Automotive Inspection Report.

**Joe Trejo Jr.**  
**210-557-0686**

**Complete**

Score	4 / 4 (100%)	Flagged items	0	Actions	0
Site conducted					Unanswered
Customer name					Luis LMJ auto motor sales
Date / Time					Jan 21st
Payment method					Invoice
Inspection cost					199
Vehicle Year / Make / Model / Color					2021 ford escape
VIN					25892 last 5
<div></div>					
Photo 1					
license plate					Dealer
Mileage					115669
Color					Silver

Interior Electrical Functions		2 / 2 (100%)
Horn function		Function correct
Interior lighting function		Function correct
Power lock function		Function correct
Power window function		Function correct
Power seat function		Function correct
Power Doors / lift gate function		N/A
Air conditioning below 60*		Yes
Heater above 90*		Yes
Climate controls function		Function correct
Radio / display screen function		Function correct
Speakers performing correctly		Function correct
GPS function		N/A
Satellite radio function		Function correct
12V power supply function		Function correct
Wireless charging function		N/A
Cooled seat function		N/A
Heated seat function		N/A
Remote entry function		Function correct

**ADDITIONAL NOTES**

Vehicle interior electrical functionality is correct across-the-board, no in operable functions.

Interior Condition	
Seat belt function	Function correct
Front seat condition	Normal wear
Rear seat condition	Normal wear
Carpeting condition	Normal wear
Headliner condition	Normal wear
Door panel condition	Normal wear
Dashboard condition	Normal wear
Headliner condition	Normal wear
Center console condition	Normal wear
Glove compartment condition	Normal wear
Sun visor condition	Normal wear
Trunk / Cargo area condition	Normal wear
Trim pieces condition	Normal wear

### ADDITIONAL NOTES

Normal wear to the interior as expected for the age and mileage on the vehicle. No water damage to the carpet or carpet installation. No rust on the bottom side of the dash. No evidence of flood damage present. No evidence of the vehicle being smoked inside. no severely damaged or missing panels. See all interior photos for evidence of current condition.



Photo 2



Photo 3



Photo 4



Photo 5



Photo 6



Photo 7



Photo 8



Photo 9

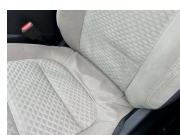


Photo 10



Photo 11



Photo 12



Photo 13



Photo 14



Photo 15



Photo 16



Photo 17



Photo 18



Photo 19



Photo 20



Photo 21



Photo 22



Photo 23



Photo 24



Photo 25



Photo 26



Photo 27



Photo 28



Photo 29



Photo 30



Photo 31



Photo 32



Photo 33



Photo 34



Photo 35



Photo 36



Photo 37



Photo 38



Photo 39

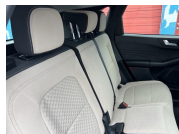


Photo 40



Photo 41



Photo 42



Photo 43



Photo 44



Photo 45

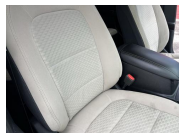


Photo 46



Photo 47



Photo 48



Photo 49

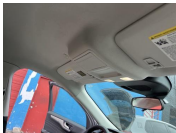


Photo 50

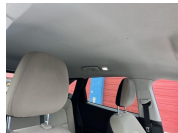


Photo 51



Photo 52



Photo 53



## Exterior Body / Structural Condition

### Paint depth on metal body panels

There is some paint and bodywork noticed on the vehicle, the majority of the repaint work is consolidated to the driver side. The front driver side fender has been repainted, the driver side door has been repainted, the rear driver side door has been repainted, the front passenger side fender has been repainted. All of the other metal body panels are showing factory paint depth. The front windshield has been replaced with a non-OEM replacement. There is no structural damage present nor any structural damage repair work done. Normal wear to the exterior as expected for the age and mileage on the vehicle, including chips, scrapes, scratches and dings. See all exterior photos for evidence of current condition.



Photo 54



Photo 55



Photo 56



Photo 57



Photo 58



Photo 59



Photo 60



Photo 61



Photo 62



Photo 63



Photo 64



Photo 65



Photo 66



Photo 67



Photo 68



Photo 69



Photo 70



Photo 71



Photo 72



Photo 73



Photo 74



Photo 75



Photo 76



Photo 77



Photo 78



Photo 79



Photo 80



Photo 81



Photo 82



Photo 83



Photo 84



Photo 85



Photo 86



Photo 87



Photo 88



Photo 89



Photo 90



Photo 91



Photo 92



Photo 93



Photo 94



Photo 95



Photo 96



Photo 97



Photo 98



Photo 99



Photo 100



Photo 101



Photo 102



Photo 103



Photo 104



Photo 105



Photo 106



Photo 107

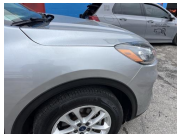


Photo 108



Photo 109



Photo 110



Photo 111



Photo 112



Photo 113



Photo 114



Photo 115



Photo 116



Photo 117



Photo 118



Photo 119



Photo 120



Photo 121



Photo 122



Photo 123



Photo 124



Photo 125



Photo 126



Photo 127



Photo 128



Photo 129



Photo 130



Photo 131



Photo 132



Photo 133

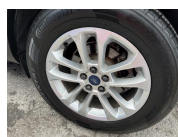


Photo 134



Photo 135

<b>Front bumper condition</b>	Normal wear
<b>Rear bumper condition</b>	Normal wear
<b>Hood panel condition</b>	Normal wear
<b>Driver side fender condition</b>	Normal wear
<b>Passenger side fender condition</b>	Normal wear
<b>Roof panel condition</b>	Normal wear
<b>Front driver side door Condition</b>	Normal wear
<b>Rear driver side door condition</b>	Normal wear
<b>Front passenger side door condition</b>	Normal wear
<b>Rear passenger side door condition</b>	Normal wear

<b>Driver side quarter panel condition</b>	Normal wear
<b>Passenger side quarter panel condition</b>	Normal wear
<b>Trunk panel condition</b>	Normal wear
<b>Truck Bed condition</b>	N/A
<b>Tail gate condition</b>	N/A
<b>Chassis / Frame condition</b>	Normal wear
<b>Frame rail condition</b>	Normal wear
<b>Subframe condition</b>	Normal wear
<b>Engine cradle condition</b>	Normal wear
<b>Skid / Dust cover condition</b>	Normal wear
<b>Collapse beam condition</b>	Normal wear
<b>Window trim condition</b>	Normal wear
<b>Weather stripping condition</b>	Normal wear
<b>Front windshield condition</b>	Normal wear
Small crack on windshield less than an inch	
<b>Other window glass condition</b>	Normal wear
<b>Wheel / Hubcap condition</b>	Normal wear

**ADDITIONAL NOTES**

No excessive rust or corrosion to the frame/chassis



## Tire condition

### Front driver side tire

75-100% remaining

All four tires are in healthy condition, tires are evenly worn and all road safe with right around 75% tread life remaining.



Photo 136



Photo 137



Photo 138

### Front passenger side tire

75-100% remaining



Photo 139



Photo 140



Photo 141

### Rear driver side tire

75-100% remaining



Photo 142

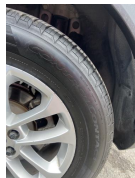


Photo 143

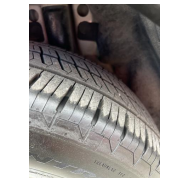


Photo 144

### Rear passenger side tire

75-100% remaining



Photo 145



Photo 146



Photo 147

### Spare tire and equipment

N/A

Not born with spare tire



Battery / charging system

Battery date Na

Standing voltage 12.8



Photo 148

Loaded voltage 14.2

Battery is accepting the charge from the alternator and the alternator charge output is correct

**Engine Testing / Condition**

2 / 2 (100%)

**Internal engine inspection w/ borescope camera**

Engine clean internally, no gunk or sludge presents. Proper signs of maintenance present. Block test passed, no internal combustion leak out. Coolant mixture correct and cooling system functionality is healthy. All external engine accessories in good working. No leaks or seepage from anywhere on the engine. External drive belts in decent condition. Currently no concern in mechanical issues present in relation to the engine or related accessories.



Photo 149



Photo 150



Photo 151



Photo 152



Photo 153



Photo 154



Photo 155



Photo 156

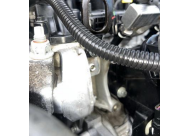


Photo 157



Photo 158



Photo 159



Photo 160

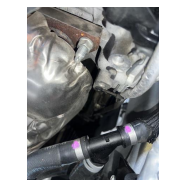


Photo 161



Photo 162

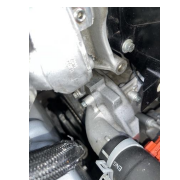


Photo 163

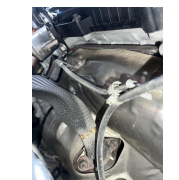


Photo 164

<b>Engine block test</b>	Pass
<b>Coolant mixture test</b>	Pass
<b>Air filter condition</b>	Normal wear
<b>Engine oil condition</b>	Normal wear
<b>Engine oil level</b>	Healthy
<b>Engine oil leaks</b>	None
<b>Coolant level</b>	Healthy
<b>Coolant hoses</b>	Healthy
<b>Radiator condition / function</b>	Healthy
<b>Engine operating temperature</b>	Healthy
<b>Cooling fan function</b>	Healthy
<b>Drive belt condition</b>	Healthy

<b>Abnormal engine knock</b>	None
<b>Abnormal valve train rattle</b>	None
<b>Abnormal bearing noises</b>	None
<b>Engine gunk / sludge</b>	None
<b>Fuel tank</b>	Healthy
<b>Fuel injectors / lines</b>	Healthy
<b>Valve cover gaskets</b>	Healthy
<b>Intake manifold gasket</b>	Healthy
<b>Cylinder head gasket</b>	Healthy
<b>Oil pan gasket</b>	Healthy
<b>Timing cover gasket</b>	Healthy
<b>Rear main seal</b>	Healthy
<b>Timing belt / components</b>	Healthy
<b>Exhaust manifold</b>	Healthy
<b>External engine accessories</b>	Healthy

**Transmission / Differentials****Transmission fluid level**

Healthy

**Transmission fluid condition**

Healthy

**Transmission fluid leaks**

None

No transmission fluid leaks from the transmission casing. Both left and right side axle seals are free of any fluid leaks. Both left and right side CV axle are in healthy condition. Shift transitions out on the road are correct across-the-board



Photo 165



Photo 166



Photo 167



Photo 168



Photo 169

**Transmission cooler / lines**

Healthy

**Front differential condition**

Healthy

**Center differential condition**

N/A

**Rear differential condition**

N/A

**Differential leaks**

None

**4x4 function / engagement**

N/A

**Clutch engagement**

Healthy

**Gear engagement**

Healthy

**Shift transitions**

Healthy

**Drive shaft condition**

N/A



## Suspension condition

### Front shocks / struts

Healthy

Normal fatigue notice to the suspension components. All of the suspension components seem to be original. None of the suspension components are blown out and due form the replacement. The No excessive surface rust on the exposed metal. No abnormal noise or feedback from the suspension while out on the road. All of the rubber in relation to the mounts, joints and bushings has decent texture.



Photo 170



Photo 171



Photo 172



Photo 173



Photo 174



Photo 175

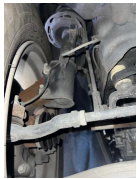


Photo 176



Photo 177

### Rear shocks / struts

Healthy



Photo 178



Photo 179



Photo 180

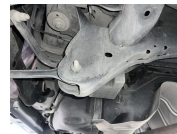


Photo 181



Photo 182



Photo 183



Photo 184

### Control arms upper

Healthy

### Control arms lower

Healthy

### Ball joints

Healthy

### Bushings

Healthy

### Torsion bars

Healthy

### Coilover function

Healthy

### Air ride function

N/A

### Airbag condition







N/A

**Abnormal rust / corrosion to metals**

None

**Deterioration of rubbers**

None

Braking system condition	
Brake fluid condition	Healthy
Brake fluid level	Healthy
Brake fluid leaks	None
Moisture content in brake fluid	None
Brake lines	Healthy
Brake calipers front	Healthy
Brake calipers rear	Healthy
Brake drums rear	N/A
Brake rotors front	Healthy
Brake rotors rear	Healthy
Front brake pad life remaining	75-100% remaining
Right around 75% brake pad life remaining	
<div>    </div> <div> <span>Photo 185</span> <span>Photo 186</span> <span>Photo 187</span> </div>	
Rear brake pad life remaining	75-100% remaining
Right around 75% brake pad life remaining	
<div>    </div> <div> <span>Photo 188</span> <span>Photo 189</span> <span>Photo 190</span> </div>	
E-brake function	Healthy

Steering system condition	
Steering wheel	Healthy
Steering column	Healthy
Steering knuckle / shaft	Healthy
Steering box	N/A
Rack and pinion condition	Healthy
Inner tie rods	Healthy
outer tie rods	Healthy
Rack boots	Healthy
Power steering pump	N/A
power steering lines	N/A
Power steering leaks	N/A
Power steering fluid level	N/A
Electric steering motor	Healthy
Abnormal play / slack in steering	None
Steering alignment on road	Healthy



Computer diagnostic scan

Engine control module

Healthy

All of the control modules on the vehicle were free of any live/active diagnostic fault codes. All live feed diagnostic testing was successfully passed. All live feed emissions testing was successfully passed.



Photo 191

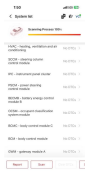


Photo 192



Photo 193



Photo 194

Transmission control module

Healthy

Anti lock brake (ABS) module

Healthy

SRS module

Healthy

hybrid control module

Healthy

Suspension control module

N/A

## Vehicle road test

### Vehicle road test comments / concerns

Overall, the vehicle functionality is correct out on the road across-the-board. No drivability abnormalities or issues present. Normal drivability characteristics, present as expected for the age and mileage on this specific vehicle.

---

**Value of vehicle / Diminished value due to repairs or current damage**

No diminished value due to no structural damage present nor any structural damage repair work done

---

Media summary



Photo 1



Photo 2



Photo 3



Photo 4



Photo 5



Photo 6





Photo 7



Photo 8



Photo 9



Photo 10



Photo 11



Photo 12

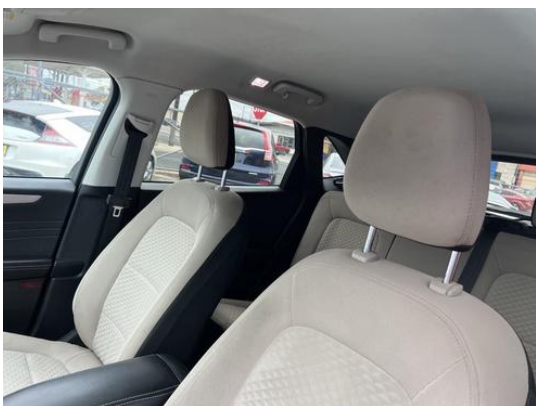


Photo 13



Photo 14



Photo 15



Photo 16



Photo 17



Photo 18



Photo 19



Photo 20





Photo 21



Photo 22



Photo 23



Photo 24

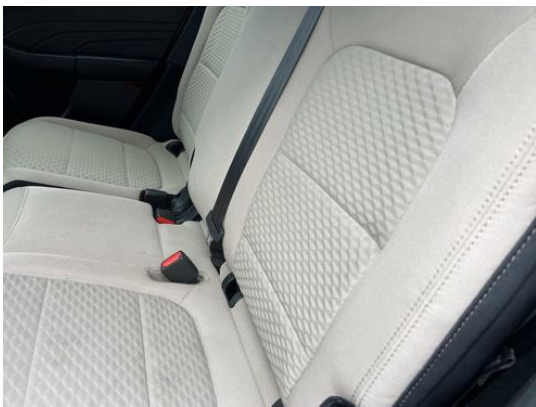


Photo 25

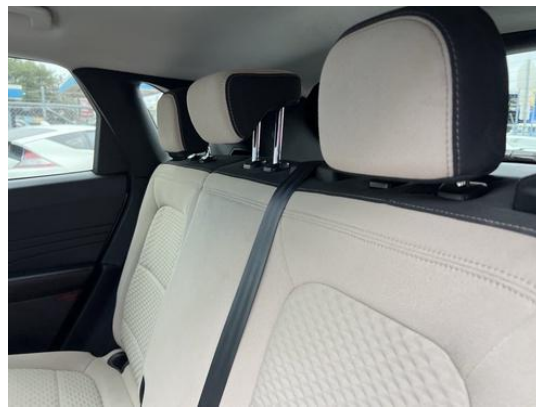


Photo 26



Photo 27

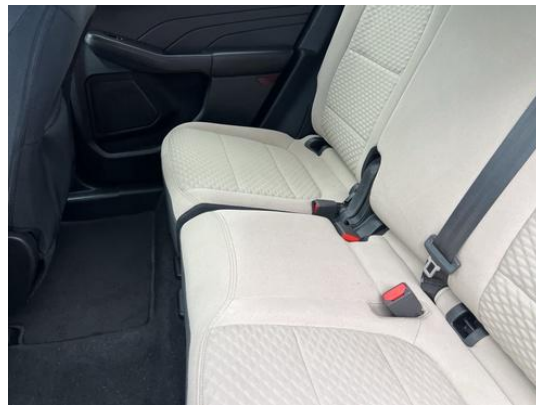


Photo 28

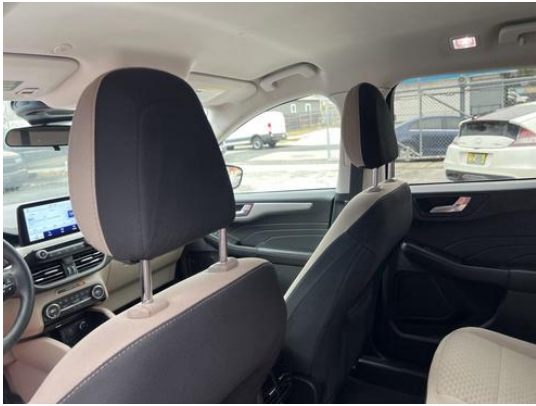


Photo 29



Photo 30



Photo 31



Photo 32



Photo 33



Photo 34



Photo 35



Photo 36





Photo 37



Photo 38



Photo 39



Photo 40

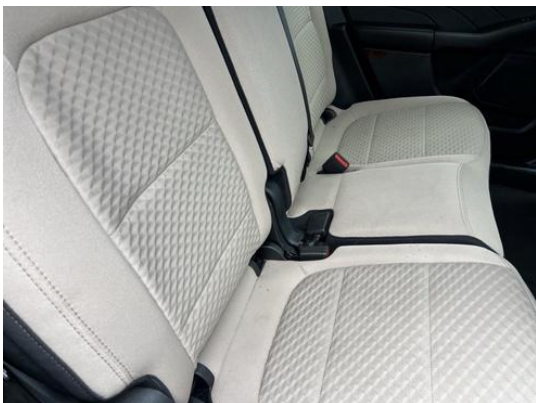


Photo 41



Photo 42



Photo 43



Photo 44



Photo 45



Photo 46

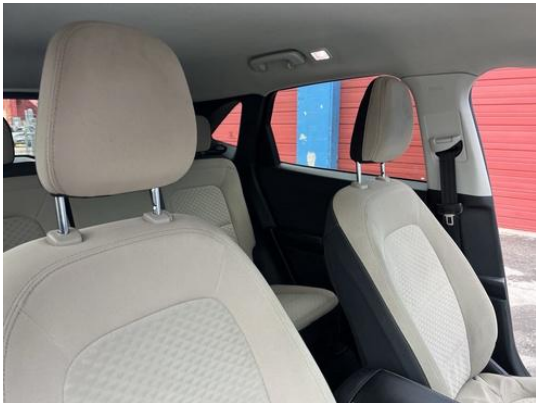


Photo 47



Photo 48



Photo 49



Photo 50





Photo 51



Photo 52



Photo 53



Photo 54



Photo 55



Photo 56



Photo 57



Photo 58



Photo 59



Photo 60



Photo 61



Photo 62





Photo 63



Photo 64



Photo 65



Photo 66



Photo 67



Photo 68



Photo 69



Photo 70



Photo 71



Photo 72



Photo 73



Photo 74



Photo 75



Photo 76



Photo 77



Photo 78





Photo 79



Photo 80



Photo 81



Photo 82



Photo 83



Photo 84



Photo 85



Photo 86





Photo 87



Photo 88



Photo 89



Photo 90



Photo 91



Photo 92



Photo 93



Photo 94





Photo 95



Photo 96



Photo 97



Photo 98



Photo 99



Photo 100



Photo 101



Photo 102





Photo 103



Photo 104



Photo 105



Photo 106



Photo 107



Photo 108



Photo 109



Photo 110





Photo 111



Photo 112



Photo 113



Photo 114



Photo 115



Photo 116



Photo 117



Photo 118





Photo 119



Photo 120



Photo 121



Photo 122



Photo 123



Photo 124



Photo 125



Photo 126





Photo 127



Photo 128



Photo 129



Photo 130



Photo 131



Photo 132



Photo 133



Photo 134



Photo 135



Photo 136



Photo 137



Photo 138





Photo 139



Photo 140



Photo 141



Photo 142



Photo 143



Photo 144



Photo 145



Photo 146





Photo 147



Photo 148



Photo 149



Photo 150



Photo 151



Photo 152



Photo 153



Photo 154



Photo 155



Photo 156



Photo 157



Photo 158





Photo 159



Photo 160



Photo 161



Photo 162



Photo 163



Photo 164



Photo 165



Photo 166



Photo 167

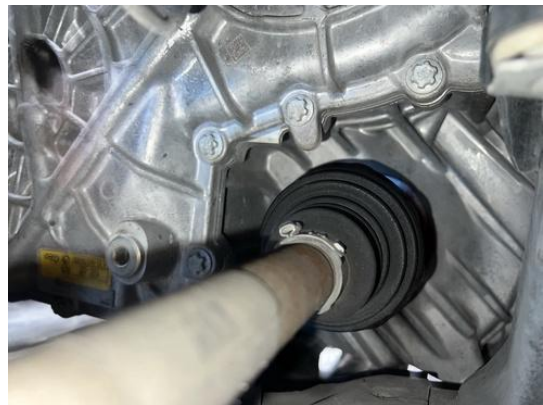


Photo 168





Photo 169



Photo 170



Photo 171



Photo 172



Photo 173



Photo 174



Photo 175



Photo 176





Photo 177



Photo 178



Photo 179



Photo 180



Photo 181



Photo 182



Photo 183



Photo 184



Photo 185



Photo 186



Photo 187



Photo 188





Photo 189

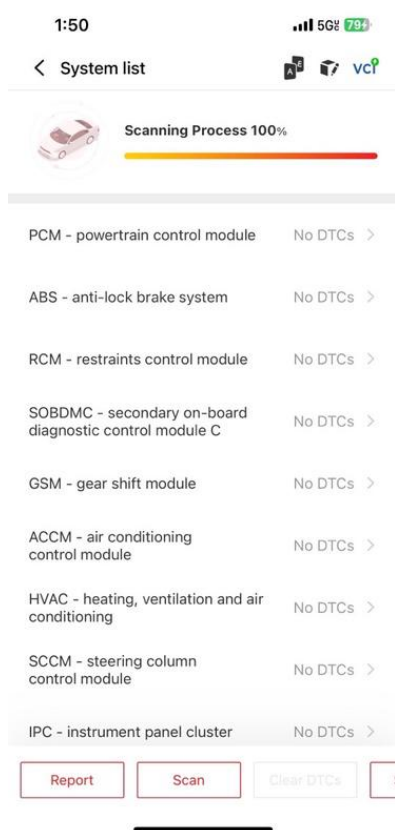


Photo 191

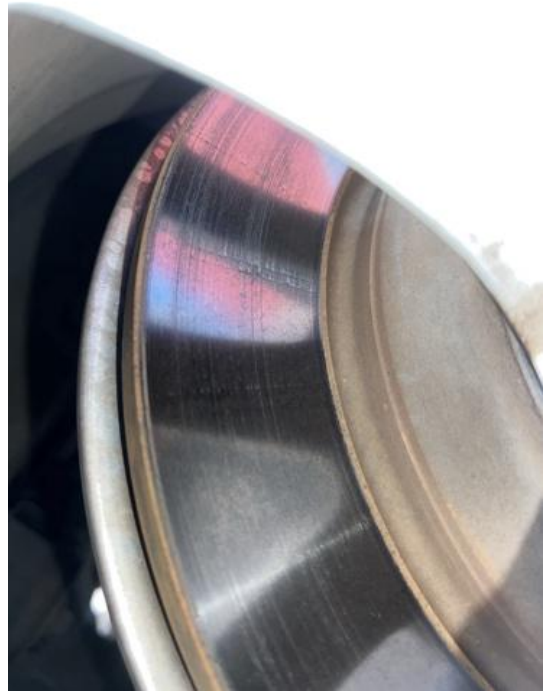


Photo 190

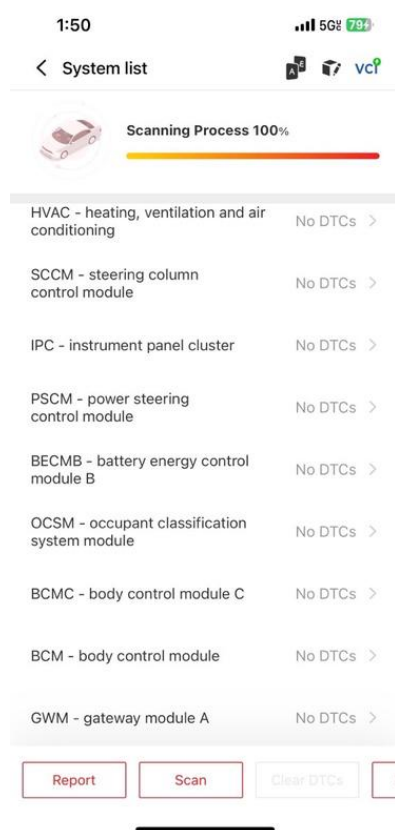


Photo 192

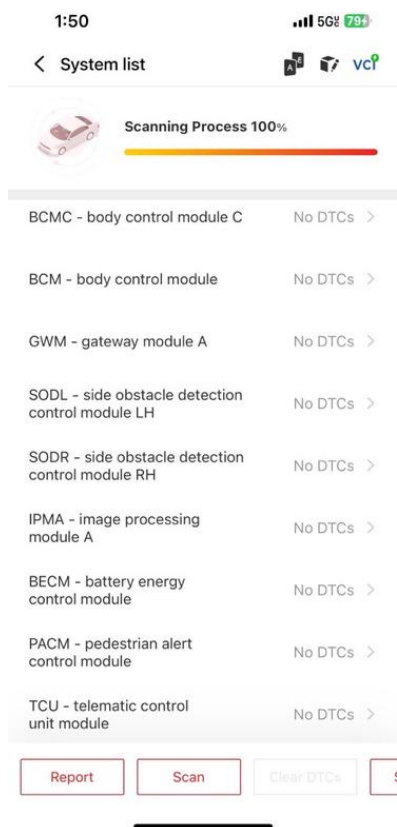


Photo 193

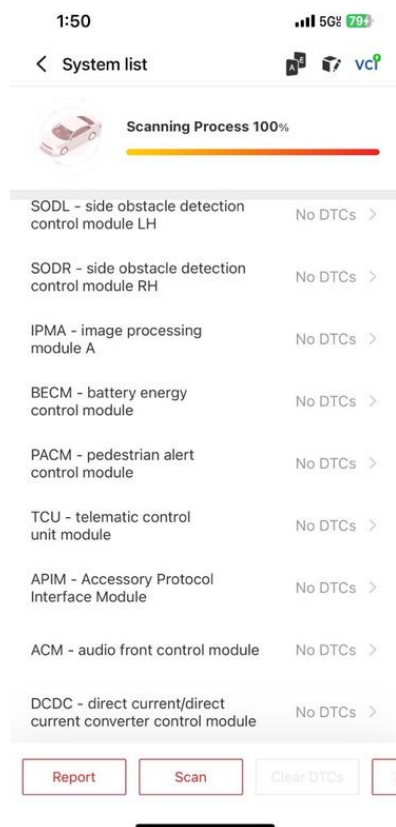


Photo 194