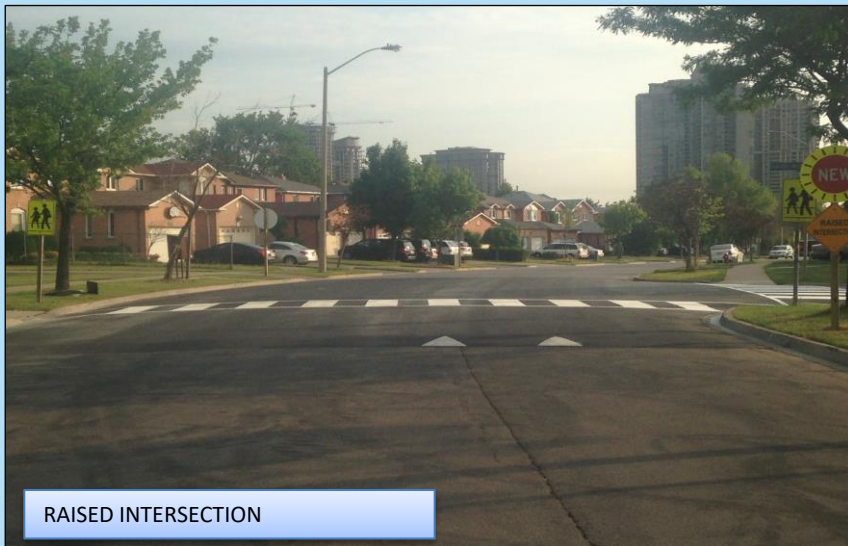
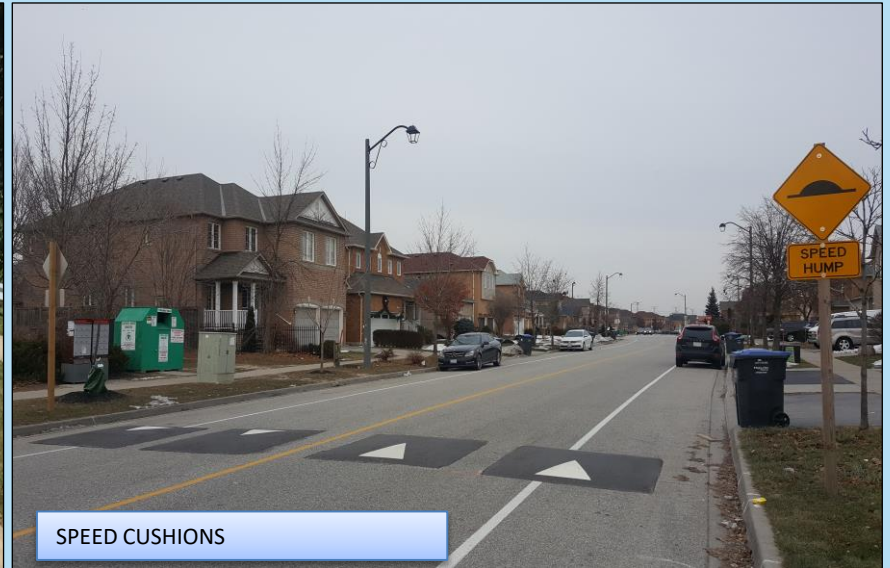
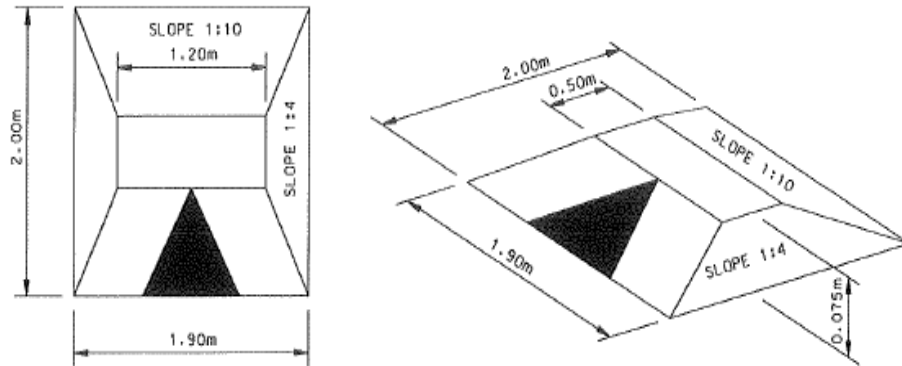


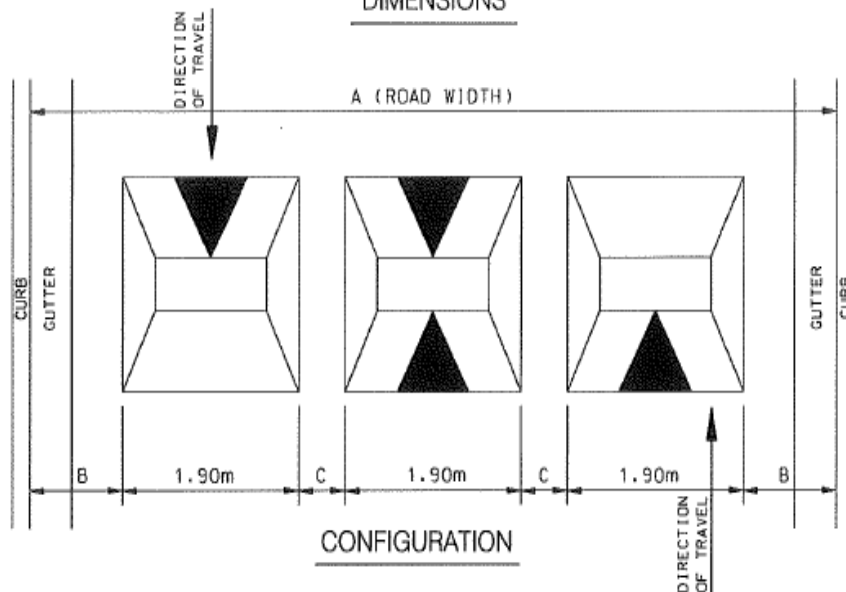
TRAFFIC CALMING DEVICES



SPEED CUSHIONS DESIGN



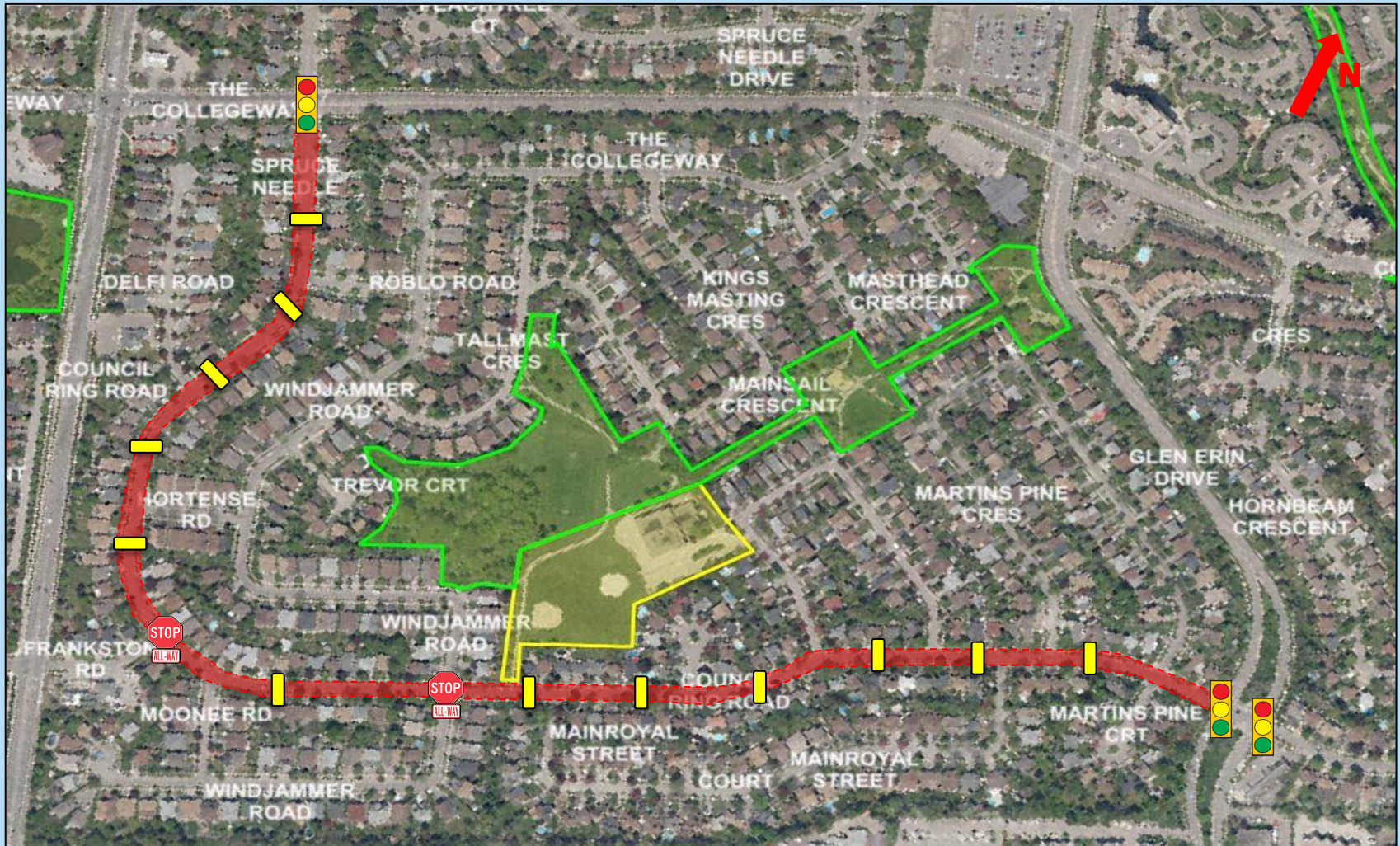
DIMENSIONS





CONFIGURATION

- Raised area on a roadway that does not cover the entire width of the road
- Designed to accommodate wide wheel base of emergency vehicles (easy passage)
- Designed to discourage drivers from travelling at excessive speeds
- A series of speed cushions is more effective than a single installation
- Use on neighborhood roads

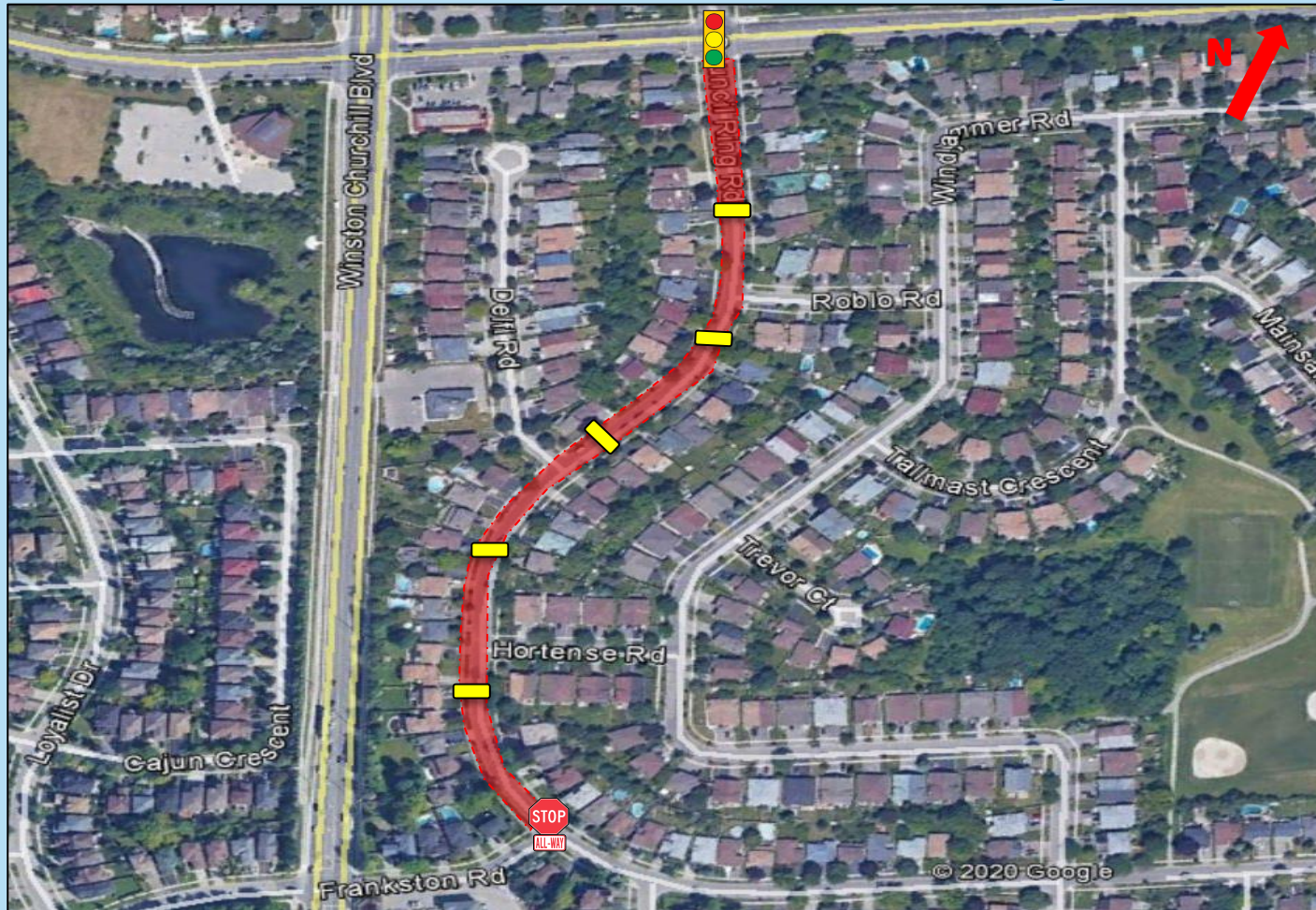
Council Ring Road



 - Project Area
 - All- Way Stop

 - Signalized intersection
 - Proposed speed cushion

Council Ring Road



--- - Project Area



- All- Way Stop



- Signalized intersection



- Proposed speed cushion

Frequently Asked Questions (FAQ)

What is traffic calming?

- Physical measures on the roadways which aim to reduce the negative effects of traffic in neighbourhoods by altering driver behaviour to improve conditions for all road users.

What are the benefits of traffic calming?

- Physical traffic calming is used to enhance the safety of the City's neighbourhood roadways, while maintaining access to properties and accommodating all modes of travel in a safe and appropriately designed environment.

Does traffic calming impact winter maintenance?

- Traffic calming devices are designed so that ploughing operations are not impacted
- Traffic calming has been implemented on City roadways since 2016 and has not had any negative impacts on winter maintenance

Frequently Asked Questions (FAQ)

How does the City determine the appropriate traffic calming design for a roadway?

- The specific locations and design of the traffic calming devices are intended to achieve optimal operating speeds without becoming a nuisance to the neighbourhood or adversely affecting services such as transit, waste collection, and emergency response times.
- When preparing traffic calming plan for Tacc Drive staff considered different types of traffic calming devices, overall roadway characteristics, spacing, layout, and the impacts the installation of physical traffic calming devices may have on local residents and City services.
- When selecting the locations for the traffic calming devices, staff aimed to minimize the impact on local residents while ensuring appropriate spacing is kept to achieve the desired operating speed.
- After the general spacing and layout of the traffic calming device have been established, the final location of each device was determined by considering the location of intersections, drainage, utilities and providing a minimum setback of 3.0 metres from driveways where possible.

Frequently Asked Questions (FAQ)

Does traffic calming impact emergency response times?

- Traffic calming designs can accommodate service vehicles such as emergency services vehicles, transit and waste management with limited impact to their operation
- Every traffic calming plan involves communication with emergency services (Fire, Police, Paramedic) and MiWay
- To date, Road Safety staff have not received any comments from emergency services or MiWay regarding negative impacts on their services.

Are there additional signs and markings?

- Warning signs are installed at each traffic calming location and 'Traffic Calmed Neighbourhood' signs are installed on the roadways to advise drivers that traffic calming measures are in place within the neighbourhood.
- Speed cushions will be marked with white pavement markings for extra visibility.