



## January 2022

### **PAL/LAA/DAC General Meeting on Zoom \***

Monday, January 10, 2022 at 7:30 pm

**Guest Artist : Lisa Rigge**

### **A Historical View of Cameras and the Art of Hand Colored Photographs**

Join talented Pleasanton Art League (PAL) and Livermore Art Association (LAA) member, Lisa Rigge in a delightful presentation describing the earliest cameras, an overview of their printing methods, and the art of hand-coloring the images.

In the earliest days of photography, images could only be printed in black and white. The only way to make the photographs look as realistic as possible was to add color by hand.

As photography improved and quickly gained world-wide popularity, the art of hand-coloring photographs expanded along with it. Lisa will describe the ways in which these early photographs, especially Daguerreotypes and Albumen prints, were hand-colored. Following this part of the talk, Lisa will show a step-by-step illustrated example of how to hand-color a digital image.

Lisa Rigge is a photographer and educator. She was an Artist-in-Residence at the KALA Art Institute in Berkeley creating a portfolio of solar plate etchings. She has won numerous local and national awards, and her work is in many private collections across the US. Her work has been published in ZYZZYVA; Dream Time Magazine; The Rose in the World; Passenger Books (online); The Sun Magazine; LensWork "Seeing in Sixes 2019;" "Our Magnificent Planet 2020", and soon to be released, "Our Magnificent Planet 2021."



**\* This Meeting is on Zoom Only**  
Zoom link will be on our Websites  
[www.PAL-ART.com](http://www.PAL-ART.com) & [www.LivermoreArtAssociation.org](http://www.LivermoreArtAssociation.org)  
the week before the meeting.

**What's Inside**

Bulletin Board .....	4
Calendar of Events .....	10
Call for Artists .....	4
Contact Us .....	9
Members Contributions .....	5-8
LAA News .....	3
LAA Gallery News .....	3
Officers & Chairpersons .....	9
PAL News .....	2
Shows .....	4



**DO NOT FORWARD THIS OR ANY CONSTANT CONTACT MESSAGES.  
THEY WILL UNSUBSCRIBE OR SUSPEND YOU!**

## PAL NEWS

### New PAL President's Message:



Dear Members,

Bravo! What an incredible couple of years we've had! I am so proud of our achievements & innovations to engage with our members. It seemed an insurmountable task to come together when we were forced to distance and time stood still. Yet, we managed to keep art relevant as we persevered through joyful collaboration.

At PAL, it is a privilege to work with creative minds everyday, and a Board that always guides and encourages new ideas. With utmost gratitude to LAA and DAC, our partnerships have made us stronger, together!

I am truly honored to take on this new role and serve alongside brilliant officers, chairpersons, volunteers, and partners. Our unique skills will help us lead the way into exciting opportunities as we continue to build on existing processes focused on efficiency and inclusiveness. Our goal is to create an engaging environment across ages to establish artist connections by exchanging best practices. It is an honor to volunteer for an organization that has been catalytic in building my art career from a hobbyist to a professional. This can be a reality for other aspiring artists too!

I have very big shoes to fill! I am incredibly grateful to Beth Okurowski and her leadership team. Beth is an asset and has been a perfect mentor.

Thank you all for your continued support and participation. Kindly renew your memberships with PAL and invite fellow enthusiasts to join us. Let's make scope for art abundant and accessible, irrespective of the times ahead!

My best wishes to you all for an exciting 2022

Meghana Mitragotri, 2022 President,  
Pleasanton Art League

**January 3<sup>rd</sup> is the Deadline for On-line Registration of the PAL Members' Show at the Museum on Main.** Receiving is January 10 from 11:00 to 1:00. Open to the public January 12 to March 26. Check [www.PAL-ART.com](http://www.PAL-ART.com) or the December Portfolio page 3 for more Information, or contact either Lorraine Wells at [dingbats@comcast.net](mailto:dingbats@comcast.net) or Christine Bourg at [chrisbourg6@aol.com](mailto:chrisbourg6@aol.com).

**Correction to Constant Contact Message Regarding PAL MOM Show:** We understand that some artists may not have the means to take credit card payments and handle sales tax. No artist should lose a sale for these reasons. Hence, PAL has decided to handle all sales (2D & 3D) and collect sales tax on behalf of every artist.

And, as a one-time bonus this year (2022), PAL is waiving its commission from sales for this show. 100% of the sale amount will be sent to the artist in the form of a check after the show. We hope this will encourage all artists to participate in our very first art show of 2022, the PAL-MOM Show "Imagination Expressed". Hurry, January 3, 2022 is the last date to enter! Visit [www.https://www.pal-art.com/exhibits-events/call-artists/](http://www.https://www.pal-art.com/exhibits-events/call-artists/) for more information. For questions contact Christine Bourg at [chrisbourg6@aol.com](mailto:chrisbourg6@aol.com)

### PAL Membership, Reminder to Renew!

**It's Simple!** Go to [www.pal-art.com](http://www.pal-art.com), hover over the "Home" tab at the top, click on "Become A Member," and then follow the instructions. If you have any questions, please email Peter Okurowski ([pokurowski@gmail.com](mailto:pokurowski@gmail.com)) or Emelie Rogers ([emrogers@ix.netcom.com](mailto:emrogers@ix.netcom.com)). You can also call Peter at 925 339-3500 or Emelie at 925 425-7267.

Note: The PAL Membership form was on page 7 in the December Portfolio, or you can find it on [www.PAL-Art.com](http://www.PAL-Art.com).

## LAA NEWS



### New LAA President's Message:

In the 5 years that I have been part of LAA, 4 of them on the Board, I have grown to appreciate LAA's depth of history and the dedication of long-standing members. The last two years have pushed us in directions that we never thought we would go, and that is a good thing. As with any growth and change, it has not always been easy but the results have been worth it. We have enthusiastic members with energy and ideas that will help us move in new directions.

2022 is our 65th anniversary. I would like to honor what member artists have built by making it a year to remember... in a good way. In the next year, my focus is on our members and increasing the opportunities to socialize, learn and share their wonderful work. As Georgia, our membership chair says, to "show and grow". I hope you are willing to join in and help make it happen. This is going to be fun.

Christine Watters,  
2022 LAA President

**Happy  
New Year!**

### LAA Memberships are Due for Renewal January 1.

The new 2022 form was on page 5 in the December Portfolio or you can go to [LivermoreArtAssociation.org](http://LivermoreArtAssociation.org) and print one. A completed form is necessary to include with your check made out to LAA. Mail both to P.O. Box 216, Livermore CA 94551-0216.

Note to LAA Life Members: You do not need to send a check, but we need to have your filled out form on file.

## LAA GALLERY NEWS

### LAA Gallery Hours:

Open Thursdays, Fridays & Saturdays,  
11:30 to 3:30 and Sundays, 10:00 to 2:00

Upstairs in the Carnegie Building  
2155-3<sup>rd</sup> Street, Livermore

925 449-9927 [www.livermoreartassociation.org](http://www.livermoreartassociation.org)

### 2022 Gallery Dates

February 12,13 - Valentines Specials  
April 9,10 - April Showers Bring May Flowers  
May 1 weekend - Pre-Mother's Day Sales  
August 14 - Art In The Park  
September 25 - Jewelry and Wearable Art Show  
December 3,4 - Christmas Event

**Watch for Other Events!**

### Message from Gallery Director

Our Gallery artists are looking forward to a New Year. We've welcomed 4 new members this past year and said farewell to 3 more. Our list of art shows has expanded and showcases Gallery members and some guest artists. We plan to join the Livermore Valley Made campaign in this new year as well, so hold on!"

Peggy Kervin

## SHOWS

**PAL Members Show, Imagination Expressed 2022** at Museum on Main, 503 Main Street, Pleasanton from January 12 to March 26. Hours are 10:00 to 4:00 Tuesday through Saturday. Information: [www.museumonmain.org](http://www.museumonmain.org) or call 925 462-2766. Members see page 2 about Deadline (January 3rd) and Receiving and new information about sales made at the show.



**"50 Faces - Italian Mosaics"** is currently showing at the Bankhead Theater Gallery. Closing Reception is Saturday January 15 from 1:00 to 3:30 pm.

Bankhead Theater Gallery, 2400 First St. Livermore. Meet the Italian curator Guglielmo Zanette and get a Guided Tour with information on how the mosaics are created in Italy.

<https://livermorearts.org/visual-arts-2/>

**Opening Reception for "Double Take - Art & Literature Together"** is Saturday, January 22 from 1:00 to 3:30. The

reception is free and open to the public and will be a delightful afternoon of poetry readings that pair with the art on display. The exhibit continues until March 27 and is open Thursdays through Sundays 1:00 to 5:00. Bankhead Theater Gallery, 2400 First St. Livermore. Please check with Box Office to confirm Opening Reception date which may vary due to pandemic issues. <https://livermorearts.org/visual-arts-2/>



## CALL FOR ARTISTS

**New Deadline:** San Francisco Arts Commission has issued a call for artists' work for a new meeting room scheduled to open in Sunol in the Spring of 2022. SRAC is currently seeking submissions from local artists of available 2-dimensional artworks to consider for purchase for the Center's Community Meeting room. See artist call and submissions details. [Click Here](#) Questions: Jackie von Treskow, Project Manager, Public Art Civic Art Collection and Public Art Program 415 252-2225. Deadline is January 5, 2022.

## BULLETIN BOARD

**We Would Like to See Your Work in the Portfolio.** Don't be shy! Send 2-3 photos by January 15<sup>th</sup> for the February issue. You are also encouraged to write a paragraph describing your work. We will use as much as we can, depending on space available. Send your photos to [normawebb@comcast.net](mailto:normawebb@comcast.net).

**A Note from Shakeeb:** The end of the year brings us no greater joy than to express our gratitude to each and every one of you for your continued support during this challenging times, As we wrap up 2021 we want to thank you from the bottom of our hearts. We wish you all a happy Holidays filled with laughter, love and good health through the new year!

Thank You and Be Safe,  
The Way Up Crew

**IN MEMORIUM:** We are sorry to report that Constance Baldonado, LAA member for many years, passed away November 13th in New Mexico. She was the widow of Ray Baldonado who passed a few months ago.

## MEMBERS CONTRIBUTIONS

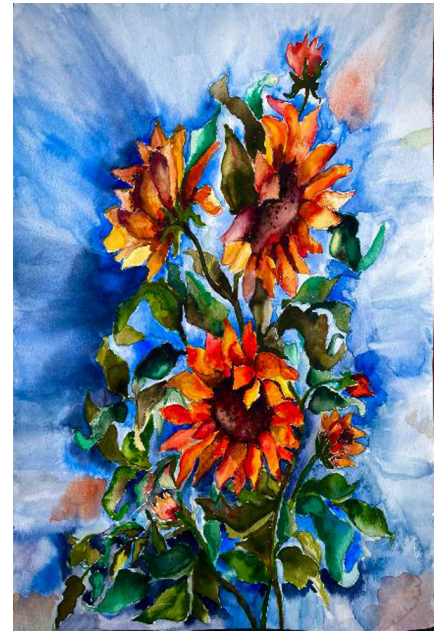


**Desert Queen:** Inspired by pictures of this beautiful desert rose. This flower blooms in different colors but I wanted to capture this particular purple color for its uniqueness. Also the leaves are a beautiful leathery green color and very pronounced because of their hardiness and drought tolerance.

**Deepti Saraswat**



**Wild Roses:** This watercolor was inspired by a beautiful vine in my front yard. I have tried to give an impressionistic style.



**Sunshine Cheer:** These are the beautiful sunflowers available for purchase in pots at nurseries during late summer in CA. These are really big flowers and I loved the reddish hue. I wanted the painting to be very vibrant and just brighten up the space it is put in.



**Priscilla Walker:** This year I decided to do little recipe cards for some friends and neighbors. I painted each of the front of the recipe cards individually. Since this is the time of year when everyone's lemon trees are overflowing and we all could use a quick and simple treat to whip up when unexpected guests show up. My recipe requires lemon zest and strawberries and flavored vinegar. The go to in such a recipe is normally balsamic vinegar. I prefer a fruit flavored vinegar, such as raspberry or blackberry. I include a bottle of one or the other with each recipe card. I source my vinegar from our local olive oil farmers. [priscillawalker@comcast.net](mailto:priscillawalker@comcast.net)



## MEMBERS CONTRIBUTIONS

**Monique Rardin Richardson:** "I just launched a website! <https://www.foreverpresent.net/> And here are a couple photographs. One is NYE 2019 on Main Street in Pleasanton and the other is Ladybug on Railroad Avenue in Danville."



**Kathy Hill's Beagle**



**Diane Rodriguez**

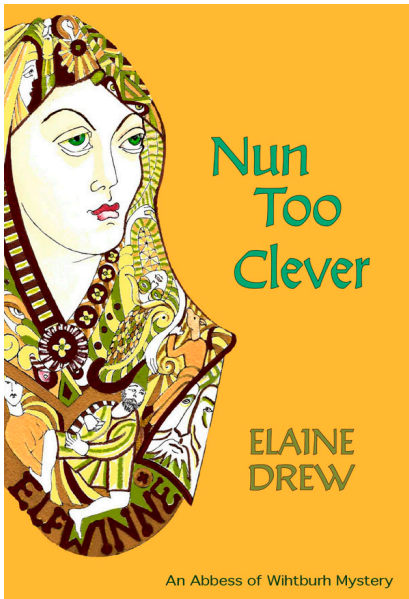


**Camellia and Lace, Watercolor**  
The camellia is from my garden.



**Winter in Yosemite, Watercolor**  
I have been going to Yosemite for 60 years.

## MEMBERS CONTRIBUTIONS



**Elaine Drew:** We all had our own coping strategies for getting through the Pandemic. Mine was to write a book. If you've read any fairytales you may have asked yourself what life would be like—ten years on—for the lucky maiden who married the prince. *Nun Too Clever* attempts to answer that question. It is a mystery, centered on a nun who dies unexpectedly. A precious relic is stolen, and a village girl goes missing. The queen wants to sort it all out before her bossy husband returns from the front and gets all the credit. You can use the “Look Inside” feature on Amazon to see if it's your cup of mead. [Nun Too Clever](#)

### Jan Watling, Quilling



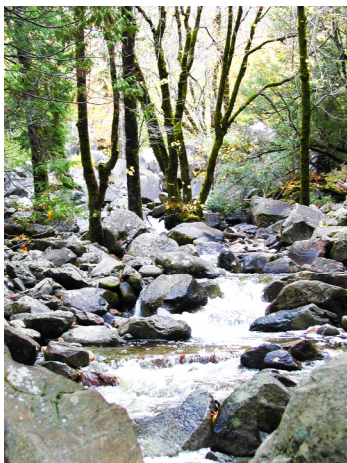
“Winter Solstice“ has finally been framed and was hung in my family room on 2021's winter solstice. I used an idea from a filet crochet book, but used white card stock strips for each element. The outside edges of the frame is 42”, so not small.

“We all want some figgy pudding!” I confess I haven't never eaten anything like this—I'm not a fan of fruitcake things!”

### Stephen Rodriguez, Photography



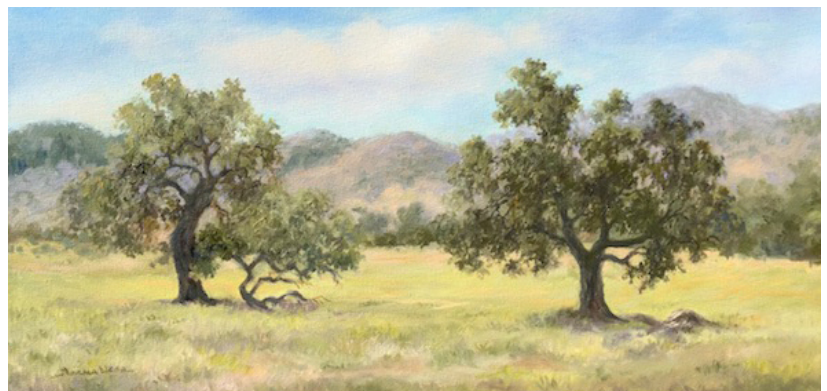
Yosemite Reflections



Little Falls, Yosemite



**Norma Webb,** Oil. This was one of my few accomplishments since COVID started. “Two Oaks” was done for Nancy Mueller whose property is on Mines Road.



## MEMBERS CONTRIBUTIONS



**Helene Roylance:** Sometimes I struggle to make time for watercolor, but I am pleased with the paintings I created this year. I had the chance to tackle some subjects that I had wanted to for a long time, from travels to that one beautiful succulent plant in my parent's garden.

This summer a different project came my way. A neighbor wanted to build a Little Free Library for our neighborhood, and pulled together several neighbors on the project. She enlisted my husband to build the structure, and I volunteered to paint the detail artwork on each side. I suggested all of those involved give me a list of a few of their favorite books, and used those titles to paint the sides. It was a fun project and even more so knowing that every time I see it, the contents have changed just a little as neighbors exchange books. I encourage anyone who has thought about it to create one!



Watercolor Succulent

**Ron Rigge:** These are photographs from a trip to Southern Utah in October.



Nature's Jewelry



Snow Canyon



# 2022 Officers and Chairpersons

## Portfolio Information

### Editor

Norma Webb 925 828-9170  
normawebb@comcast.net

### E-Mailing Service

Wei-Ting Chuang  
weitingzzz67129@gmail.com

### Submission Guidelines

Deadline: the 10<sup>th</sup> of the Month  
E-mail Text to  
normawebb@comcast.net  
(Attachments for Graphics)  
or  
Phone Norma at  
925 828-9170

## Membership Information

Memberships Run  
January 1 to December 31

## Livermore Art Association

Membership Chair for LAA  
Georgia Jacobs 925 321-9488  
membership@livermoreart.org  
Regular Membership \$35  
Senior (65+) \$25  
Member & Spouse \$60  
High School Student \$10  
Patron \$100  
US Mail Portfolio Free  
LAA Online Gallery Fee \$15

## Pleasanton Art League

Membership Chair for PAL  
Emelie Rogers 925 425-7167  
emrogers@ix.netcom.com  
Regular Membership \$35  
Senior (65+) \$25  
Member & Spouse \$60  
Student Full Time \$15  
Tax Deductible Donation  
US Mail Portfolio Subscription \$15  
(Email Subscription Free)  
PAL Online Gallery Fee \$16

## LAA

President  
Christine Watters 925 336-2371  
president@livermoreart.org  
Vice President  
Position Open  
vicepresident@livermoreart.org  
Secretary  
Judy Rice 925 443-4555  
secretary@livermoreart.org  
Treasurer  
Joyce Moulden  
treasurer@livermoreart.org  
Historian  
Position Open  
Hospitality  
Georgia Jacobs 925 321-9488  
hospitality@livermoreart.org  
LAA Gallery Director &  
LCAC Representative  
Peggy Kervin 209 531-4026  
Liaison For Shows  
Clark Streater 925 447-8924  
shows@livermoreart.org  
Membership  
Georgia Jacobs 925 321-9488  
membership@livermoreart.org  
Portfolio  
Norma Webb 925 828-9170  
news@livermoreart.org  
Programs  
Christine Watters 925 336-2371  
programs@livermoreart.org  
Property Manager  
Richard Finn 925 447-9652  
property@livermoreart.org  
Publicity  
Craig Varden  
publicity@livermoreart.org  
LAA Website Updates  
Christine Watters  
news@livermoreart.org

## PAL

President  
Meghana Mitragotri 630 520-2010  
meghana.ms@gmail.com  
Parliamentarian  
Beth Okurowski  
bokurowski@comcast.net  
Vice President  
George Garbarino 925 462-8779  
macgarbz@comcast.net  
Secretary  
Jan Loomis 925 462-1863  
sugargandens@comcast.net  
Treasurer  
John DeVillers 925 686-6838  
johndevillers22@yahoo.com  
Chamber of Commerce Rep  
Ritu Ahluwalia 925 600-0250  
ritu-a@comcast.net  
Circuit  
Usha Shukla 925 922-1775  
ushaartmail@yahoo.com  
Hospitality  
Sharon Cohune 925 648-5153  
sfcohune@comcast.net  
Membership  
Emelie Rogers 925 425-7267  
emrogers@ix.netcom.com  
PAL Firehouse Wall  
Lynda Briggs 925 600-9258  
lbriggs400@gmail.com  
Portfolio Staff - See Page Left  
Publicity  
Lorraine Wells 925 833-1049  
dingbats@comcast.net  
Scholarships  
Meghana Mitragotri 630 520-2010  
meghana.ms@gmail.com  
Shows  
Pat Smith 925 846-4138  
psmithrltr@comcast.net  
PAL Website  
Marion Huff 925 699-4038  
marion.huff@gmail.com  
Workshops  
Linda & George Garbarino  
925 462-8779  
lindagarbarino@comcast.net

## Contact Us

**Livermore Art Association**, P. O. Box 216, Livermore, CA 94551-0216  
[www.LivermoreArtAssociation.org](http://www.LivermoreArtAssociation.org)

**Livermore Art Association Gallery**, 2155-3rd St., Livermore 94550  
LAA Gallery 925 449-9927

**Pleasanton Art League**, P. O. Box 23, Pleasanton, CA 94566-0023  
[www.PAL-ART.com](http://www.PAL-ART.com)

**January 2022**



**Monday January 10, 7:30  
General Meeting Via Zoom  
Lisa Rigge, Art of Hand Colored  
Photographs. See Page 1**



## **LAA & PAL Calendar Events**

January 1	PAL & LAA Membership Renewals Due	Pages 2 & 3
January 3	On-Line Deadline PAL MOM Show	Page 2
January 10	General Meeting on Zoom. 7:30 pm	Page 1
January 10	PAL MOM Receiving - 11:00 to 1:00	Page 2
January 15	Deadline for February Portfolio	Page 4