



OELWEIN PARK AND RECREATION DEPARTMENT 2021 ANNUAL BROCHURE

Oelwein Park and Recreation

Oelwein.fun



OPRD Mission Statement:

“It is the mission of the Oelwein Parks and Recreation Department to create recreational opportunities and provide consistent, reliable public service; creating diverse programs and services to promote community involvement; and being a leader in recreation and leisure services while preserving our facilities for future generations.”

Our Facilities:

The Oelwein Parks Department, under the supervision of Superintendent Joshua Johnson MA, maintains 9 parks and recreational areas containing more than 173 acres of land. Also under the Parks Department’s care is a 40 site campground that offers kayak and paddleboard rental on a 55 acre artificial “no-wake” lake, numerous shelter and playground areas and 3.78 miles of walk/bike trails and the Oelwein Family Aquatic Facility. The City of Oelwein currently offers nine shelters that are available for rental among several other smaller shelters throughout the parks. The Oelwein Family Aquatic Center offers Red Cross / private swim lessons and facility rental for birthday and company gatherings. The Oelwein Recreation program is under the supervision of Jessica Burkhart, which offers several leagues, clinics, competitions and events for youth and adults. The Williams Wellness Center provides optional 24 hour access, gym, weights, cardio equipment, track, racquetball court, fitness classes and personal training.

In This Issue

- ◆ Park Facilities
- ◆ Trails
- ◆ Aquatics
- ◆ Wellness Center
- ◆ Recreation
- ◆ Campground
- ◆ Special Events
- ◆ Cemetery
- ◆ Sponsorship

Contact Information

Parks Superintendent:

Joshua Johnson MA
jjohnson@cityofuelwein.org

**Recreation / Wellness
Facilitator:**

Jessica Burkhart
jburkhart@oelwein.k12.ia.us

Council Liaison:

Renee Cantrell

Board Members:

Dr. Tim Gearhart
Connie Jorgenson

Mike Meska

Lou Ann Milks

Dan Stasi

Jared Stewart

Ashland Taylor

Wellness Center

318 8th Ave, SE
Oelwein, Ia. 50662
(319) 283-2312

City Hall

20 2nd Ave. SW
Oelwein, Ia. 50662
(319) 283-5440



Downtown Streetscape

Table of Contents

- ◆ **General Information**
 - Park Descriptions
- ◆ **Lake Oelwein**
- ◆ **Trail System**
- ◆ **Aquatic Facility**
 - Hours
 - Fees
 - Classes
 - Rental
 - Swim Team
- ◆ **Williams Center**
- ◆ **Recreation Programs**
- ◆ **Campground**
 - Facility
 - Fees
 - Rules
- ◆ **Disc Golf Course**
- ◆ **Wild Flower Plantings**
- ◆ **Special Events**
 - 4th Celebration
 - 5k Run/Walk
 - Italian Days
- ◆ **Trees Forever**
- ◆ **Sponsorships**
- ◆ **Cemetery**
- ◆ **Adopt a Bench**
- ◆ **Employment**
- ◆ **Recognition**

Oelwein Parks System

1) Appreciation Park

2) City Park

3) Levin Park

4) Platt Park

5) Redgate Park

6) Reidy Park

7) Veterans Sport Complex

8) Walter Chrysler / Veterans Park

9) Wings Park

10) Oelwein Family Aquatic Center

Oelwein Parks System

◆ **Appreciation Park** (Size 1 acre)

Located at 1st Avenue and 1st Street Southwest, this park is also known as Orville Christophel Memorial park or log cabin park. The park offers a historical monument from days of yore, picnic tables, benches and parking for downtown shopping.

◆ **City Park** (Size 69 acres)

Located on South Frederick Avenue this park is frontage property to a 55-acre artificial lake named Lake Oelwein. The park offers picnic tables, open play area, tennis court, sand volleyball, horseshoe courts, restroom facilities, modern and primitive camping, and dump station. The park offers “no wake” boating access to Lake Oelwein. This park is the home to playground equipment installed with the help of the Kids Playground Fund.

◆ **Levin Park** (Size 2 acres)

Located at 4th Avenue and 4 ½ St. Southwest, this park offers picnic tables, open play field and is bordered by a natural wooded environment.

◆ **Platt’s Park** (Size 16 acres)

Located at 7th Street and 7th Avenue Southeast, this park offers 1.25 miles of foot paths, picnic shelters and tables, playground equipment, modern restroom and a 18 hole disc golf course. This park is the home of the gazebo and “Trail of Dreams” created by Oelwein Care Center. This park is the home to playground equipment installed with the help of the Kids Playground Fund.

◆ **Redgate Park** (Size 3 acres)

Located at West Charles street, this park offers a large wooded area, as well as picnic facilities, playground equipment, basketball court, horseshoe courts, primitive restrooms and bocce ball courts. This park has newer playground equipment installed with the help of the Kids Playground Fund.

Oelwein Parks System

- 1) Appreciation Park
- 2) City Park
- 3) Levin Park
- 4) Platt Park
- 5) Redgate Park
- 6) Reidy Park
- 7) Veterans Sport Complex
- 8) Walter Chrysler / Veterans Park
- 9) Wings Park
- 10) Oelwein Family Aquatic Center

Oelwein Parks System Continued

◆ Reidy Park (Size 3 acres)

Located at 2nd street and Hillside Drive, this park offers a basketball court, playground equipment, picnic facilities, new and improved tennis courts, trail head access and playground equipment installed with the help of the Kids Playground Fund.

◆ Veterans Sports Complex (Size 32 acres)

Located at 20th street southeast, this park offers two soccer fields, two softball fields, and two baseball fields. The complex is restricted in use, for league play only. Modern restrooms, concession stand, and drinking fountains are available.

◆ Walter P. Chrysler/ Veterans' Park (Size 1 acre)

Located at North Frederick and 2nd Street, these two small parks are commonly referred to as the gazebo park. Dedicated to Walter P. Chrysler who once resided in Oelwein, this park offers a gazebo with picnic table, water fountain and flower gardens. The veterans park held the dedication of the Korean and Vietnam Veterans' memorial, donated by the McNamara family, in 1998.

◆ Wings Park (Size 24 acres)

Located at 4th Street and 5th Ave NE. The park offers picnic shelters and tables, tennis courts, 3 softball fields, basketball court, restrooms, and playground equipment installed with the help of the Kids Playground Fund.

◆ Oelwein Family Aquatic Center

Located at 411 4th Street NE, this facility offers a zero-depth entry pool, 150 foot water slide, six racing lanes, 1 and 3 meter boards, sunning deck and grassy areas. Modern handicap accessible changing facilities, concessions and a children's aquatic playground are available. It's the "cool" place to be on a hot summers day.

Map of Oelwein Parks





Lake Oelwein at City Park

Lake Oelwein offers great scenery and endless recreation possibilities. Two fishing jetties have been made available, Lake Oelwein is a “no-wake” facility. Kayak and paddleboard rentals are available for rental through the campground host.



Kayaks and paddleboards will be used on Lake Oelwein only. All kayaks and paddleboards rented must stay between the south side of 10th street SW and North of the blue barrels, please stay off private property. Each kayak and paddleboard rental will come with one paddle and personal floatation device. Wearing a personal floatation device at all times is recommended. Anyone 12 years and younger is required to wear a personal floatation device at all times by law. No refunds available.

- ◆ One-hour rental is \$10 per kayak/Paddleboard
- ◆ Four-hour rental is \$30 per kayak/Paddleboard
- ◆ Two or more kayak rentals is \$35 for four hours per kayak/Paddleboard

Oelwein City Park has two sand volleyball courts, several playgrounds, basketball court, five horseshoe courts, and several picnic amenities. Also available through the campground host are horseshoes for use on our five horseshoe courts on the east side of City Park.



Friends of the Oelwein Municipal Urban Trail



The trail system currently offers 3.64 miles of walking/biking trails throughout the city. Starting at the Oelwein Pool the trail winds south through Reidy Park and past Platt Park then crosses 10th Street SE. The trail then traverses around the exterior of the Oelwein Industrial Park before ending at the Veteran's Memorial Sports Complex. Starting in the southeast part of Redgate Park this trail winds through the wooded area of the southwest quadrant of Oelwein, before it skirts the City of Oelwein utility shops. The trail crosses 6th Ave SW and travels along a creek before ending at Levin Park.





Upgraded Signage



Generous Donations



Oelwein Family Aquatic Center



Oelwein Family Aquatic Center: Built 1996

Aquatic Center phone number:

319-238-8160

Aquatic Center Address:

411 4th Street NE

Did You Know:

The Oelwein Public pool holds over 282,888 gallons of water.

Pool Closures are rare but sometimes necessary for special events and for the safety of our patrons.

- ◆ Swim Team Meets
- ◆ Lightning or threatening weather in the area
- ◆ Cold Temperatures below 60 degrees/ and or less than 20 swimmers in attendance



Public Swimming Schedule

Adult Lap (18 & over)	12:00 – 1:00
Open Swim (7 & over)	12:00 – 7:00

Daily Admission Rates

Adults/Students (age 7 & over)	\$3.00
Youth (birth – 6)	\$1.00

Season Pass Rates

Family Pass \$120.00
 (up to 5, \$5.00 for each family member over 5)
 (must live within the household)

Single Pass \$60.00
 (18+ years of age & up)

Youth Pass \$40.00
 (Ages 7-17)

Nanny Pass \$40.00

**All children under 7 years old must be accompanied by a responsible person at least 14 years of age.

All rates include state & local sales tax.

Swim Lessons

Red Cross Swim Lessons	\$30.00
Private Lessons	\$50.00

Pool Parties & Private Rentals

Make your special event more exciting with a pool party. Groups may rent the Aquatic Center for Private parties on Saturday mornings from 10:00 – noon and most evenings from 7:00 – 9:00 P.M. It’s a great idea for a birthday party, family reunion, and company get-togethers.

Pool Party Prices – Including Water Slide

Number in Attendance	1 hour	2 hours
1 – 100	\$ 130.00	\$150.00
100 – 200	\$ 170.00	\$190.00

Water Aerobics

This program is designed to trim and firm the body, increase endurance and flexibility and enhance the cardiovascular system.

Monday thru Friday 12:00 – 1:00 P.M.

Fee: \$3.00 admission or season pass.

Adult Lap Swimming

Swimming uses almost every muscle group in the body and will help improve cardiovascular endurance and tone the body as well. Adults only.

Daily 12:00 – 1:00 p.m.

Fee: \$3.00 admission or season pass.





Private Lessons

Prefer a one-on-one private teaching situation? Private lessons are available for children and adults. Lessons consist of five (5) one-half (1/2) hour sessions. Private lessons must be scheduled through the Parks and Recreation Department located in Oelwein City Hall. Once registered, the Aquatics Manager will assign an Instructor. Goals and a lesson plan will be drafted based on the comfort level and swimming ability of the student. Private Lessons \$50.00



The Oelwein Family Aquatic Center has Wi-Fi available for its patrons.

- ◆ In order to jump off of the diving boards during open swim at our facility you must demonstrate the ability to swim 50 yards (Lap lanes 25 yards) in the American Crawl Stroke.
- ◆ To go down our 150' slide you must be 48" in height.



Original Public Pool: Built 1944



Red Cross Learn to Swim Classes

If you are unable to determine what level your child is in please talk with a staff member before hand and they will assist you with the proper placement.

The Learn-to-Swim program gives adults, and children ages 6 months and older, the opportunity to learn to swim in a safe environment. The program is designed to allow students to learn at their own pace and master the skills at each level before attempting the next challenge.

Each level of Learn-to-Swim includes training in basic water safety and helping others in an emergency, in addition to stroke development. These lessons are designed to give students a positive learning experience.

Level 1: Introduction to water skills: helps students feel comfortable in the water and enjoy the water safely.

Level 2: Fundamental Aquatics Skills: gives students success with fundamental skills

Level 3: Stroke Development: builds on the skills in Level 2 by providing additional guided practice.

Level 4: Stroke Improvement: develops confidence in the strokes learned and to improve other aquatics skills

Level 5: Stroke Refinement: provides further coordination and refinement of strokes

Level 6: Swimming and Skill Proficiency: refines the strokes so students swim them with ease, efficiency, power and smoothness over greater distances.

Level 6 is designed with “menu” options. Each of these options focus on preparing students to participate in more advanced courses, such as Water Safety Instructor and Lifeguard Training. These options include: Personal Water Safety, Lifeguard Readiness, Fundamentals of Diving, and Fitness Swimming.

Red Cross Swim Lessons \$30.00

Doggy Dip



Bring your dog to the last day of the season of the aquatic center. Dogs get the opportunity to run free, socialize and swim with other dogs and their owners.

Fee: \$5 per dog and owner, additional swimmers \$2.00

Sharks Swim Team

Board President: Jeanne Baerg



Practice schedule:

Mon-Fri, 8:00 am - 9:00 am

Age Groups TBD

Practice times are subject to change and only held if temperature is 59F/14C at the Oelwein Airport by start of practice time.

Competition: Tues/Thurs/Sat.

The Shark's Swim Team is open to all area boys/girls age 4-18 with a basic ability to swim. Try outs are required for first time members. Membership fee is \$90 per student.

Sharks swimming is part of the Big Six Swim Club (BSSC), which is a USA Swim Team. Coaches work with swimmers to improve their skills in all four major strokes of freestyle, backstroke, breaststroke & butterfly., as well as promoting personal development and sportsmanship within a competition team environment.

You can contact the Oelwein Sharks Swim Team Manager for further information through their Facebook page — Sharks Swim Team Oelwein/Fairbank





Take control of your health by participating in regular physical activity at the Williams Wellness Center. Combined with a balanced diet, a consistent exercise program will help you achieve any health, weight loss or overall wellness goal you may have. The Center is located at 317 8th Avenue SE and has 24 hour accessibility. Fitness facilities include indoor walking track, circuit weight machines, cardio & free weight rooms, gymnasium and racquet ball court.

Hours of Operation:

	September – April	May – August
Monday–Thursday	5:30 a.m. to 8:30 p.m.	5:30 a.m. to 8:30 p.m.
Friday	5:30 a.m. to 6:00 p.m.	5:30 a.m. to 6:00 p.m.
Saturday	7:00 a.m. to 4:00 p.m.	7:00 a.m. to 12:00 p.m.
Sunday	11:00 a.m. to 7:00 p.m.	3:00 p.m. to 7:00 p.m.

24 hour access keys are available upon request. There is an additional charge for this feature. With 24/7 membership you will have access to the wellness center 24 hours a day, 365 days a year. This includes holidays, weekends and during inclement weather when the center may not be staffed.

Contact the Wellness Center at (319) 282-2312 or email wellness@oelwein.k12.ia.us for more information.

Personal Training

Personal trainers on staff at the Williams Wellness Center are professionals who develop and implement fitness programs for individuals of all fitness levels. Our staff is comprised of certified personal fitness trainers that have completed extensive training in exercise prescription, physiology and kinesiology. They can help to assure that you receive the best instruction possible. They work one-on-one with individuals to improve their health and reach their fitness goals. Personal training is ideal for those who don't know where to start, have hit a fitness plateau or are recovering from an illness or injury. Free Consultation is available for individuals interested in achieving personal wellness goals are encouraged to meet with one of our knowledgeable trainers to learn more about the program. There is no obligation to join. Simply discuss your individual goals, identify areas for improvement and discuss your concerns and questions.

<u>General Memberships</u>	12 Month Total	EFT Amount	6 Month Total	EFT Amount
Single	\$324	\$27/Month	\$234	\$39/Month
Married Couple	\$432	\$36/Month	\$324	\$54/Month
Family	\$540	\$45/Month	\$420	\$67/Month

<u>Senior Memberships</u>	12 Month Total	EFT Amount	6 Month Total	EFT Amount
(55 and up)				
Single	\$216	\$18/Month	\$168	\$28/Month
Married Couple	\$312	\$26/Month	\$234	\$39/Month

<u>Senior Snowbird Memberships (8 months)</u>	8 Month Total	EFT Amount
Single	\$200	\$25/Month
Married Couple	\$280	\$35/Month

<u>Student Memberships</u>	12 Month Total	EFT Amount
High School grade 9 -12	\$240	\$20/Month
College 1 Month Winter Break	\$25	PIF
College 3 Month Summer Break	\$75	PIF

Day Pass Rate	Single Day Pass	10 day Punch Card
Adult	\$5	\$50
K-12	\$3	\$30

24 Hour Access	\$60/year	\$5/Month
-----------------------	-----------	-----------

Fitness Classroom: This room is available during staffed hours when there are no scheduled fitness classes. It has a soft floor that is ideal for stretching and core work. There is a variety of equipment available for use in the fitness classroom including dumbbells, resistance bands, exercise balls, medicine balls, kettle bells and jump ropes. It is a great place to utilize for a total body workout.

Gymnasium: The large gym allows members to participate in various recreational activities including basketball, volleyball, dodgeball, pickleball and more. Gym space can be reserved or utilized during open gym times.

Racquetball Court: One regulation racquetball court is available for use to members. Racquetballs and rackets are provided by the center during staffed hours.

Locker Rooms: Locker rooms with showers and lockers are available. Hand towels are also provided during workouts.

Fitness Classes: Our certified instructors teach effective and energetic fitness classes every day. Choose from a variety of formats to find one that fits your training program. We have classes for participants of all ages and fitness levels that are offered from early morning to evening so you are sure to find one that works for your body and schedule.

Indoor Walking Track: The indoor track allows walkers and runners to enjoy exercise in rain or shine. Take advantage of the climate controlled, shock absorbent track and step into better health.

Circuit Weight Machines: Updated Precor brand weight machines that will work every muscle in the body are set up in a circuit format in the gym area. Go through the machines for a quick and effective total body workout. Staff is available to answer questions and give free orientations on all of the equipment.



Cardio Room: The cardio room has a variety of updated machines to get your heart pumping including treadmills, ellipticals, NuStep, exercise bikes, stairmill and rowing machine. Cardio Theater is installed in most machines in order to plug headphones in and choose from three different TV channels to watch during your workout.

Free Weight Room: The newly remodeled Oelwein High School free weight room is available to members to use. It features Power Lift equipment including dumbbells from 5-100 lbs., Olympic bars, combo racks, a functional cable trainer and other high quality weight equipment.

3rd-6th grade Volleyball: The Oelwein Park & Rec Department is offering Volleyball for boys and girls entering grades 3rd-6th for the 2019-2020 school year. This program helps develop new skills, learn proper techniques, understand the rules and strategies of the game and be a part of a team. Equipment requirement: Reversible Jersey (can be purchased at the Wellness Center) & Knees pads are suggested to be worn at practice and games. Games will be played on Sunday evenings at the Wellness Center. Practices begin late August. Games begin September 13th. Fee: \$20 Registration deadline is August 7th.

1st-6th grade Flag Football: This program is designed to teach boys and girls entering into grades 1st-6th for the 2020-2021 school year, the basics of football in a fun and safe environment. Equipment Requirement: Reversible Jersey (purchase at the WellnessCenter) Games will be played Saturday mornings at the Sports Complex. Practices begin late August, and games begin September 12th. Registration deadline is August 7th. Fee \$20.00.

Fall Kindergarten Soccer: Kindergarten Soccer is for boys and girls in Kindergarten or Jr. Kindergarten. This program will meet once a week for five weeks. The teams will do drills the first 15 minutes and then play a game the last 30 minutes. It will be located at the Sports Complex. This program runs Sept-Oct. EQUIPMENT REQUIREMENTS:Shin Guards. Please Volunteer!



1st & 2nd Grade Dodgeball: This program provides the opportunity for 1st & 2nd graders to have fun and burn off some energy. Dodgeball will take place Tuesday evenings for four weeks. This is a great way for kids to stay active.

Fee: \$15

Late Fee: \$5

Financial Scholarships available ask to speak with Jessica.



3rd & 4th, 5th & 6th Dodgeball : This program provides an opportunity for 3rd & 4th graders and 5th & 6th graders to have fun and burn off some energy during the cooler months. This program will take place Monday evenings for four weeks. It will be a noncompetitive environment and dodgeball is a great way for kids to stay active.

Program Day: Monday evenings at the Wellness Center

Registration Fee: \$15

Late Fee: \$5.00

Financial scholarships available, ask to speak with Jessica. Have your child bring in clean dry shoes to change into and wear comfortable clothing.

Itty Bitty Basketball:

Kindergarten Itty Bitty Basketball is for Boys and girls alongside a parent or another adult will learn the basic fundamentals of basketball while having FUN!! This program will be instructed by the Oelwein High School Varsity Basketball Coaches and Players. We encourage a parent to participate in this program (*but not required*) to learn the skills alongside your child so you can work on them at home. This program will be held on Wednesday evenings in Feb, for 45 minutes.

Program Dates: TBA

Program time: Wednesday evenings TBA

FEE: \$20.00

Late Fee: \$5.00

Financial Scholarships Available-ask to speak with Jessica Burkhart

Spring Youth & Kindergarten Soccer:

The Oelwein Park and Recreation Department is offering soccer for boys and girls in 1st-6th grade. They will have one practice a week and game on Saturday mornings located at the Oelwein Sports Complex on Hwy 150 and 20th St SE.

Kindergarten Soccer is for boys and girls in Kindergarten or Jr. Kindergarten. This program will meet once a week for five weeks. The teams will do drills the first 15 minutes and then play a game the last 30 minutes. It will be located at the Sports Complex. This program runs April-May. EQUIPMENT REQUIREMENTS: Shin Guards. WE NEED VOLUNTEER COACHES!! Please Volunteer! Coaches will receive a t-shirt for coaching. \$20 fee + \$5 late fee.

BlastBall: The Oelwein Parks and Recreation Department is offering BlastBall. This program is for boys and girls ages 3 and 4 years of age. This program will require volunteer coaches. Family or friends are encouraged to volunteer. Fee is \$15.00

T-Ball: The Oelwein Parks and Recreation Department is offering T-Ball for boys and girls in Kindergarten, Junior Kindergarten or ages 5 and 6 years old. This program will require volunteer coaches. Family or friends are encouraged to volunteer. Each player is required to furnish a baseball or softball glove. Fee is \$20.00

Adult Men's and Women's Softball League: All players must be 18 yrs and older and not enrolled in high school. Men's play on Tuesday nights, and Women's play on Thursday nights beginning in May. Men's fee is \$200.00 and Women's fees are \$200.00 per team Fee's include league play, softballs, and end of season tournament.

Adult Coed Softball League: All players must be 18 yrs and older and not enrolled in high school. Coed plays on Monday nights, starting Mid July. Fees are \$200.00 per team. Fee's include league play, softballs, and end of season tournament.

Adult Women’s Volleyball

This league is for women age 18+ not enrolled in High School. This league will play on Wednesday

evenings at the Wellness Center. Grab a team and get signed up!

Team Fee: \$60.00

Adult Coed Volleyball

This league is for men and women age 18+ not enrolled in High School. This league will play on Sunday evenings at the Wellness Center. Grab a team and get signed up!

Team Fee: \$60.00

Youth Tennis Camp

This is a 4 day camp held in July. 1st-4th graders will play 9-9:45 and the 5th-8th graders will play 10-10:45 am. This will be held at the Tennis Courts near Reidy Park and the Oelwein Middle School. This camp includes a t-shirt

Camp Dates: TBA

Fee: \$20



Little League Softball & Baseball

Register at the Williams Wellness Center.

Late Fee: \$5 in addition to registration fee

Late Registrations will be placed on the team with the least amount of players. To ensure that your child is able to fully participate, please have them signed up in the time frame we have allotted. Early sign-up is a MUST!!!

Equipment Requirement

Baseball or Softball Glove

SB/BB pants and cleats are recommended for younger levels and required for Minors and Majors.

Volunteer Coaches

are **NEEDED** for all levels of play, if you are interested in becoming a volunteer coach, please contact the Oelwein Parks & Recreation Department @ 319-283-2312 or email jburkhart@oelwein.k12.ia.us or mark "Yes" on your child's registration form

Minors and Majors Coaches scheduling meeting will be Sunday, April 7th, 1pm, in West Union at North Fayette Valley HS.

1st Grade Coed Coach Pitch: In this league, the boys & girls who are currently in 1st grade (2020-21 school year) are eligible to play. The volunteer coaches will pitch to the children in this league and continue to teach the children proper fielding, throwing, catching, positions, and hitting technique. Practice times and locations will be arranged by our volunteer coaches. Practices typically begin 2 weeks prior to their first game and continue through the season. All games are played on the ball fields at the Wings Park. The cost is \$25 per child and that fee will include a team shirt for your child to keep. Volunteer Coaches are **NEEDED!!**

Boys 2nd & 3rd grade Baseball: In this league, boys who are currently in 2nd & 3rd grade (20120-21 school year) are eligible to play. The volunteer coaches will pitch to the boys or use a ultimate pitching machine in this league and continue to teach the boys proper fielding, throwing, catching, positions, and hitting technique. Practice times and locations will be arranged by our volunteer coaches. Practices typically begin 2 weeks prior to their first game and continue through the season. All games are played on the ball fields in Oelwein. The cost is \$25 per boy and that fee will include a team shirt for your child to keep. Volunteer Coaches are **NEEDED!!**

Girls 2nd & 3rd grade Softball: In this league, girls who are currently in 2nd & 3rd grade (2020-21 school year) are eligible to play. The volunteer coaches will pitch to the girls or use a ultimate pitching machine in this league and continue to teach the girls proper fielding, throwing, catching, positions, and hitting technique. Practice times and locations will be arranged by our volunteer coaches. Practices typically begin 2 weeks prior to their first game and continue through the season. All games are played on the softball fields in Oelwein. The cost is \$25 per girl and that fee will include a team shirt for your child to keep. Volunteer Coaches are **NEEDED!!**

Minor Girls 4th & 5th Softball: This league is open to all girls currently in 4th & 5th grade (2020-21 school year). This is a traveling league throughout NE Iowa. Games will begin end of May-June. Games will be played on weeknights and some weekends. The girls participating in this league will be pitching a 11" optic Yellow ball from a 38 ft pitching rubber. Coaches will continue to work on proper technique within the game of softball. The cost is \$40 per girl and that fee includes a team jersey for your child to keep. Volunteer Coaches are **NEEDED!!**

Major Girls 6th & 7th Softball: This league is open to all girls currently in 6th & 7th grade (2020-21 school year). This is a traveling league throughout NE Iowa. Games will begin end of May-June. Games will be played on weeknights and some weekends. The girls participating in this league will be pitching a 12" optic Yellow ball from a 40 ft pitching rubber. Coaches will continue to work on proper technique within the game of softball. The cost is \$40 per girl and that fee includes a team jersey for your child to keep. Volunteer Coaches are **NEEDED!!**

Minor Boys 4th & 5th Baseball: This league is open to all boys currently in 4th & 5th grade (2020-21 school year). This is a traveling league throughout NE Iowa. Games will begin end of May-June. Games will be played on weeknights and some weekends. The boys participating in this league will be pitching from a 46 ft pitching rubber or mound. Coaches will continue to work on proper technique within the game of baseball. The cost is \$40 per boy and that fee includes a team jersey for your child to keep. Volunteer Coaches are **NEEDED!!**

Major Boys 6th & 7th Baseball: This league is open to all boys currently in 6th & 7th grade (2020-21 school year). This is a traveling league throughout NE Iowa. Games will begin end of May-June. Games will be played on weeknights and some weekends. The boys participating in this league will be pitching 48-50 ft mound using 70-75 foot bases. Coaches will continue to work on proper technique within the game of baseball. The cost is \$40 per boy and that fee includes a team jersey for your child to keep. Volunteer Coaches are **NEEDED!!**



Did you know?

The Oelwein City Park campground host is your access to kayaks, paddleboards, and horseshoe rentals through out the recreational season.

Oelwein Campground at City Park

City Park is located in the south side of Oelwein. Easy access for campers is located on the south side entrance off highway 281. Oelwein City park campground is open from April 15th to October 15th and operates on a first come, first serve basis. Oelwein City Park Campground offers 40 electrical and water campground sites. There are 10 – 50 amp sites, and 30 amp sites available, including 3 drive through sites. A modern restroom / shower facility compliments the campground. There is over 800 square feet dedicated for tent / primitive (no electrical or water) camping. Available for campers that lodge at the facility is a dump station for convenience.



Conveniently located in the center of the campground is a shelter that can be utilized by campers. Trail heads are located in the campground available to use at your leisure, cutting wood is prohibited to preserve our nature trails. Modern playground equipment has been installed for youth to utilize.

Oelwein City Park Campground Rules

* All campers are expected to keep their campsites clean and in an orderly manner *

*Quiet must be maintained between 10:30 PM and 6:00 AM *

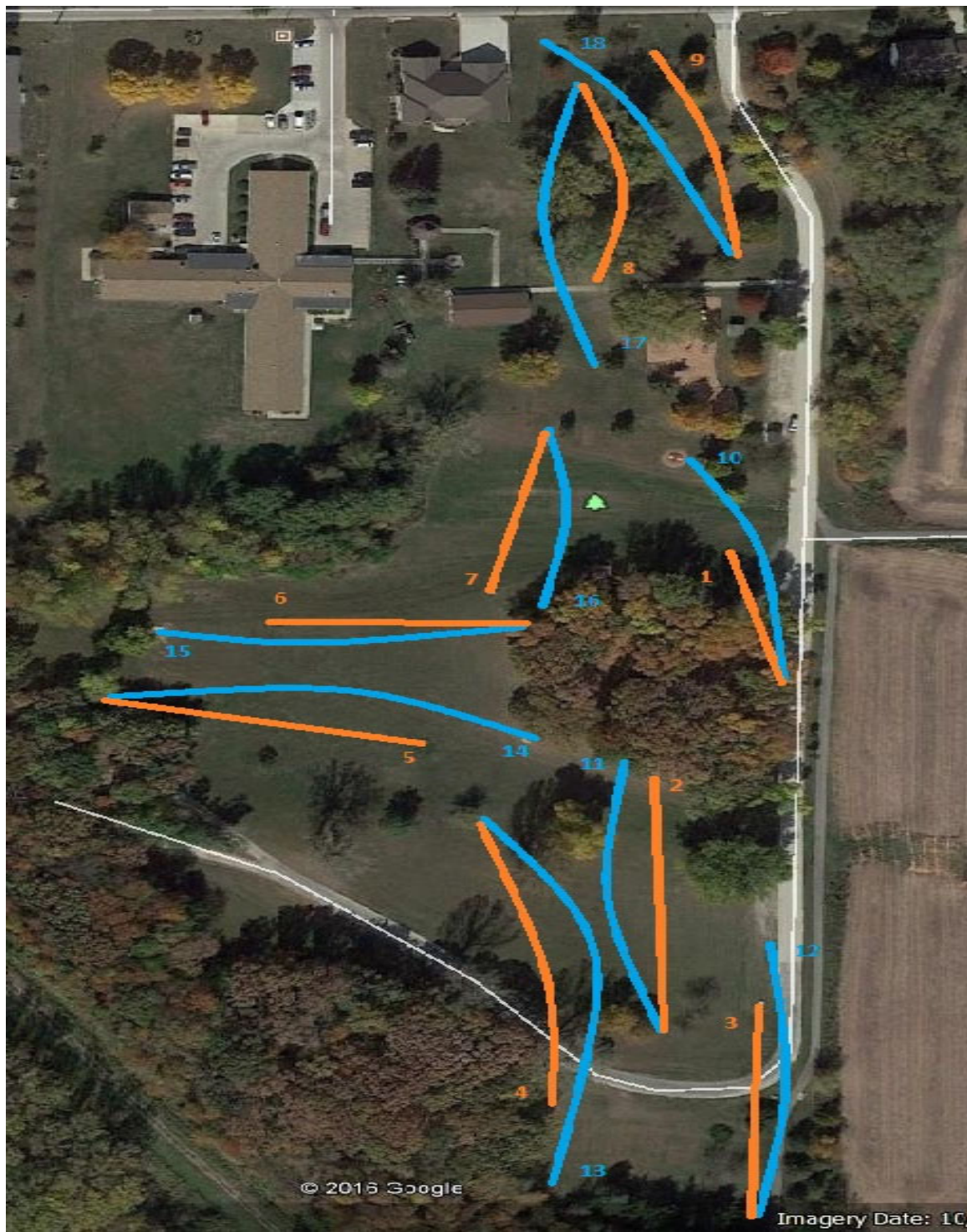
- ◆ Park and campground are closed to non-campers between 10:30 PM and 6:00 AM
- ◆ Licensed motor vehicles operated by licensed drivers only
(Mini bikes and All –terrain vehicles are prohibited per City code)
- ◆ Motor vehicles are not allowed off roadways and/or parking areas
- ◆ All domestic animals must be kept on leash not to exceed 10' in length
- ◆ Tree cutting is strictly prohibited
- ◆ Iowa fishing license required if and when fishing
- ◆ Fire must be built in places provided
- ◆ 10 MPH speed limit in campground
- ◆ No moving fire rings
- ◆ Do not move tables-ask the host for direction if extras are needed
- ◆ No tents allowed on campsite pads
- ◆ All campers must register with the host within one hour of arrival
- ◆ Check out time is 2:00 PM
- ◆ Please dispose of trash in containers provided—not fire rings
- ◆ Anyone not following these rules will be asked to leave with no refund
- ◆ Maximum stay of 4 consecutive nights in primitive tent area

Campground Rates 2021

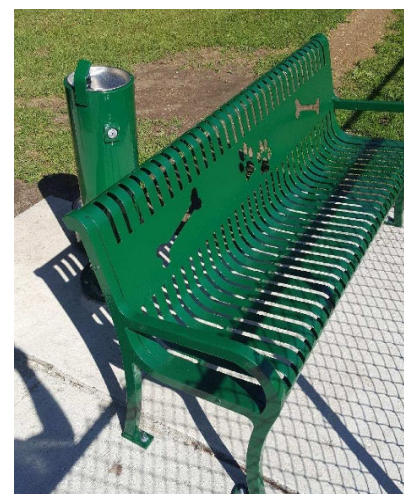
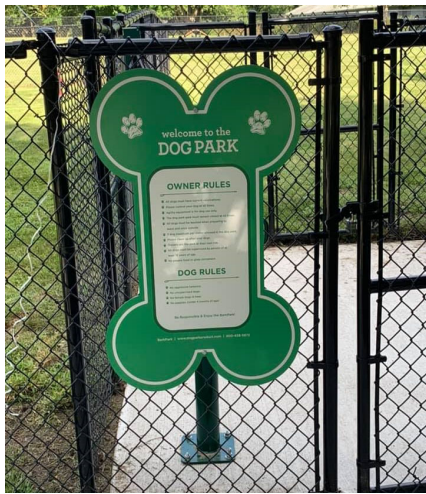
	<u>Daily</u>	<u>Weekly</u>	<u>Monthly</u>
Primitive (Tent)	\$ 8.00	\$56.00	NA
30 Amp	\$17.00	\$85.00	\$310.00
30 Amp (61 & up)	\$15.00	\$80.00	\$295.00
50 Amp	\$20.00	\$100.00	\$335.00
<u>50 Amp (61 & up)</u>	<u>\$19.00</u>	<u>\$90.00</u>	<u>\$325.00</u>
Campfire box of wood		\$5.00	
Supplementary Tent to RV site		\$6.00 per night	

Platt Park Disc Golf Course

In 2009 the City of Oelwein installed an 18 hole disc golf course at Platt Park located in the SE side of town. This course was designed to utilize 9 permanent baskets while having 18 different tee boxes. The front 9 are mostly midrange shots, none topping 300 ft. The back 9 are 250+ to around 300+. The baskets are Innova DISCatcher Pro Permanent Targets and tee boxes are concrete. Parking and modern bathroom facilities are available during the warm weather season.



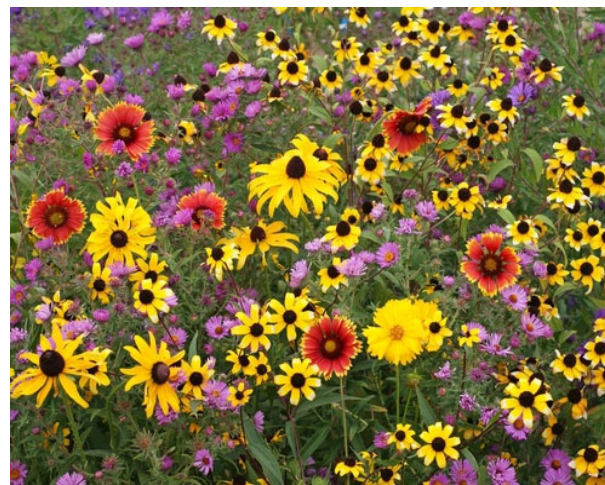
The Oelwein Municipal Dog Park was established in 2019 in the southeast corner of City Park located on the south side of Oelwein. This park is a half acre off-leash facility with room to run and negotiate various obstacles. The dog park is enclosed with 4' chain-link fence with two areas established, one for smaller dogs and one for larger dogs. All animals are to be licensed with the City of Oelwein and have their tags on them, Purchase your license and tags at the Oelwein Police Department at 510 Rock Island Road. No vicious animals are allowed. Patrons are expected to clean up after their pets to help keep the facility clean for the next user.



Animal License by Dog Type (American Kennel Club Breeds by size, mixed breed based on weight)	License Fee for spayed/neutered and chipped dog	License Fee for sprayed/ neutered dog	License fee for dog
Giant – 75 plus pounds	\$10.00	\$25.00	\$50.00
Large – 55-85 pounds	\$10.00	\$25.00	\$50.00
Medium – 35-65 pounds	\$10.00	\$20.00	\$40.00
Small – 7-35 pounds	\$10.00	\$20.00	\$40.00
Toy – 2-9 pounds	\$10.00	\$20.00	\$40.00

The City of Oelwein has three locations established with wild flower plantings. The first planting is at the Oelwein Veterans Sports Complex behind the baseball diamond in the NE corner. Also at Red gate Park, on the lower half.

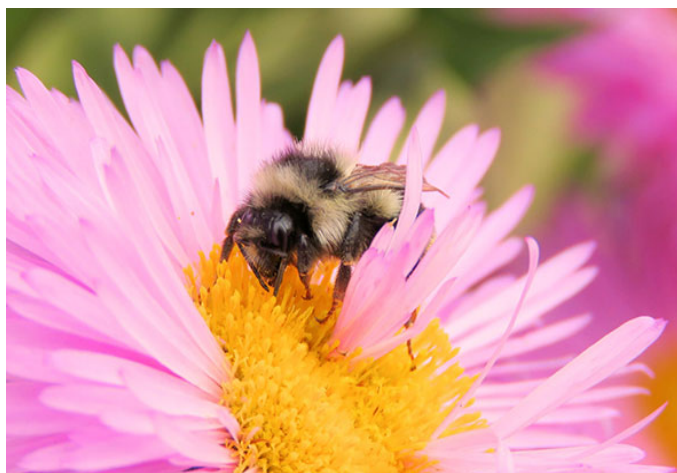
Wildflowers	
◆ Anise Hyssop	◆ Prairie Alum Root
◆ Canada Anemone	◆ Great St John's Wort
◆ Butterfly Milkweed	◆ Dense Blazingstar
◆ Smooth Blue Aster	◆ Wild Lupine
◆ New England Aster	◆ Wild Bergamot
◆ Upland White Aster	◆ Dotted Mint
◆ Canada Milkvetch	◆ Foxglove Beardtongue
◆ False Aster	◆ White Prairie Clover
◆ Partridge Pea	◆ Purple Prairie Clover
◆ Wild Senna	◆ Prairie Cinquefoil
◆ Tall Coreopsis	◆ Yellow Coneflower
◆ Golden Alexanders	◆ Black eyed Susan
◆ Showy Tick Trefoil	◆ Sweet Black eyed Susan
◆ Pale Purple Coneflower	◆ Susan
◆ Purple Coneflower	◆ Brown eyed Susan
◆ Rattlesnake Master	◆ Compass Plant
◆ Cream Gentian	◆ Ohio Goldenrod
◆ Oxeye Sunflower	◆ Stiff Goldenrod
	◆ Showy Goldenrod



Importance of Pollinators

“Pollination is not just fascinating natural history. It is an essential ecological survival function. Without pollinators, the human race and all of earth’s terrestrial ecosystems would not survive. Of the 1,400 crop plants grown around the world, i.e., those that produce all of our food and plant-based industrial products, almost **80%** require pollination by animals.” www.fs.fed.us

Grasses	
◆ Big Bluestem	◆ Rough Dropseed
◆ Little Bluestem	◆ Virginia Wild Rye
	◆ Indiangrass



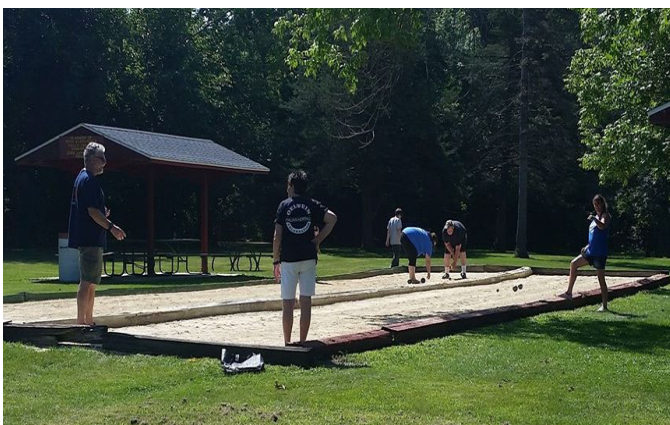
Oelwein Celebration

The Oelwein Celebration Committee provides an event intended to celebrate our community by providing a fun, family-activity based celebration. Past activities included in the celebration have been the downtown parade, live entertainment, contests, kids games, inflatables, face painting, food & product vendors, bean bag tournament, duck races, car show, crowning of Miss Oelwein, local talents, grand Fireworks and much more! The morning events are held throughout the city of Oelwein and the afternoon events are typically held at the Oelwein City Park on South Frederick the 1st Saturday of June.



Italian Heritage Days

Each August, Oelwein celebrates Italian Heritage Day, so the descendants of early settlers can celebrate their heritage together. Festivities at Red Gate Park included bocce ball contests, bingo, children's activities, other games and food stands.



Oelwein Heritage Days

Annually held the 3rd weekend in August. A great chance to get in touch with local heritage and celebrate our past. Railroad History - Large Flea Market - Beautiful Quilts - 5K Race - Vintage Cars - Arts & Crafts - Street Dance - Musical Entertainment - Games - Window Displays - Sidewalk Sales - Lunch Stands





Oelwein Trees Forever 2021

Oelwein Trees Forever is sponsored through grants from Alliant Energy – Trees Forever and the City of Oelwein.

The Oelwein Trees Forever Program does offer \$50.00 per tree (limit of 2) towards approved tree purchased and planted within the Oelwein City Limits. If the trees purchased require spading Trees Forever will pay \$75.00 per tree (limit 2). “Carefully placed trees can provide cooling summer shade; protect your home from chilling winter winds, and maximizing energy gains from winter sunlight – cutting annual home energy use by as much as 15 to 35%.” – National Arbor Day Foundation.

Participating retailers include Manske’s Corner Market & Greenhouse (319) 283-1905 – Oelwein and Cannon’s Greenhouse (563) 578-8669 – Westgate. Applicants will be responsible for their share of the cost (\$25.00 per tree) at the time of purchase.

Required: Draw a simple diagram of your house and the location you would like to plant your adopted tree(s). Please include the location of overhead lines and buried lines. For buried underground locates, please call Iowa One Call at 1-800-292-8989 beforehand. Iowa One Call is a free service.

Oelwein Trees Forever will have the final approval of planting locations to ensure the most energy efficiency use. Approved varieties in the City right a way are as follows; only approved varieties will qualify for rebates.

Street Tree Species: The following list constitutes the official Street Tree species of Oelwein. No species other than those included in this list may be planted without permission of the City Tree Board.

Small Trees	Medium Trees	Swamp White Oak
Bradford Pear	Little leaf Linden	Clemons Oak
Columnar Crab	Redmond Linden	Long Oak
Flowering Crab	Red Oak	Bur Oak
Golden Rain	Skyline Locust	White Oak
Hawthorne	American Linden	Chinkapin Oak
Lilac, Jap Tree		American Elm
Mountain (Dwarf) Maple	Large Trees	Ohio Buckeye
Pagoda, Dogwood (tree)	Kentucky Coffee Tree	London Planetree
Plum Purple leaf	Moraine Locust	Honey Locust
Soapberry	Shade master Locust	Shagbark Hickory
Basswood	Sunburst Locust	Yellowwood
Hackberry	Sycamore	Magnolia
Honey locust	Tulip Tree	Horse Chestnut
	Male Gingko	Black Gum

Trail Sponsorship



The City of Oelwein Park and Recreation Department is proposing to develop a fully comprehensive trail system that will serve the entire community of Oelwein. The Oelwein Municipal Urban Trail will provide unprecedented access to all areas of the community connecting parks, schools, downtown and create numerous recreational opportunities for everyone. The existing two sections of trails are used extensively, but lack the continuity that is needed for an all inclusive trail system. Every year more walkers, joggers, bikers and cross country skiers utilize the trails. Most importantly; completion of this trail system will provide free access for all people to exercise in a safe manner. Completing the Oelwein Municipal Urban Trail system will drive tourism and economic activity as well as secure areas for environmental resources for generations to come. Please visit Oelwein.fun to donate today!



Park Shelter Sponsorship



The Oelwein Parks & Recreation Department would like to invite area businesses to sponsor a shelter in our Parks System. The City of Oelwein currently has seven shelters that are available for sponsorship in four of our beautiful parks. The Sponsorship Program is designed to effectively market local businesses while making a positive impact on our community. Unlike other traditional forms of advertising, sponsorships allow a business to be associated with the positive benefits of a community event or recreation program.

Recreation Sponsorship



The Oelwein Parks & Recreation Department would like to invite area businesses to sponsor a recreation program of their choice. Our recreation youth athletic teams rely on local businesses for support. Many of the costs associated with the teams, such as uniforms, referees and umpire salaries are not entirely covered through participation fees. For more information, please contact City Hall at 283-5440.

Woodlawn Cemetery

Rate and Fee Schedule			Fees
◆	Grave Opening	Weekday (April 1—Nov. 30)	\$600
◆	Grave Opening	Infant Grave (April 1—Nov. 30)	\$175
◆	Grave Opening	Holidays/Saturdays (April 1—Nov. 30)	\$800
◆	Grave Opening	After Hours (April 1—Nov. 30)	\$750
◆	Grave Opening	Cremation (April 1—Nov. 30)	\$300
◆	<u>Cremation</u>	<u>Holidays/Sat./After Hours (April 1—Nov. 30)</u>	<u>\$450</u>
◆	Grave Opening	Weekday (Dec. 1—March 30)	\$700
◆	Grave Opening	Infant Grave (Dec. 1—March 30)	\$275
◆	Grave Opening	Holidays/Saturdays (Dec. 1—March 30)	\$850
◆	Grave Opening	After Hours (Dec. 1—March 30)	\$850
◆	Grave Opening	Cremation (Dec. 1—March 30)	\$400
◆	<u>Cremation</u>	<u>Holidays/Sat./After Hours (Dec. 1—March 30)</u>	<u>\$500</u>
◆	Continuation after 3:30 in weekdays	(Year Round, per hour)	\$100 1 hour Min.

Grave Spaces

◆	Regular Space	\$300
◆	Memorial Section	\$250
◆	Baby Lot	\$150
◆	Internment	Certificate \$25
◆	State Audit Fee	\$ 5
◆	Exchange	Grave Spaces \$50

Foundations

◆	Per running foot	\$60 (\$100 min)
---	------------------	------------------

Disinterment / Reinternment

◆	Disinterment of a casket	\$600
◆	Reinternment of a casket	\$600
◆	Disinterment of a cremation vault	\$250
◆	Reinternment of cremation vault	\$250
◆	Disinterment of a baby casket	\$175
◆	Reinternment of a baby casket	\$175

Cemetery decorations and flowers are allowed at Woodlawn Cemetery one week before and after Memorial Day. Anything that is not on concrete foundations after Oct. 1st will be removed by staff, this means all shepherds hooks must be removed.

Woodlawn Cemetery



Oakdale Cemetery



- ◆ Hours: Sunrise to Sunset
- ◆ Speed limit 10 mph
- ◆ No animals allowed
- ◆ Help keep the cemetery clean by using the trash receptacles provided
- ◆ Artificial flowers, wreathes or decorations of any kind, glass containers or wire stands are not permitted except 7 days before and after Memorial day
- ◆ Dead or wilted plants may be removed by maintenance
- ◆ No motorized vehicles on grass
- ◆ No alcohol allowed
- ◆ Management must approve of all planting of trees/shrubs

Shelter Reservations

The City has numerous shelters throughout our parks that can be reserved for private use. Reservations are taken upon receipt of payment at City Hall, 20 Second Avenue SW, Oelwein. 319-283-5440

Railroad Shelter—City Park



Railroad & Platt Park #2 —\$30 All other shelters—\$25

- City Park #1 Railroad shelter Green and White near large playground
- City Park #2 Reckhemmer Shelter Next to Railroad shelter by large playground
- City Park #3 New Shelter North of Dog Park, east side of park
- City Park #4 Lions Shelter North side of City Park
- Platt Park #1 Back Shelter South side in wooded area
- Platt Park #2 Front Shelter North side by Oelwein Care
- Red Gate #1 Main Shelter Large central shelter
- Wings Park #1 North Shelter West of diamond three by playground equip.
- Wings Park #2 South Shelter Between diamonds 2&3

Adopt-A-Bench

The Adopt-A-Bench Program provides civic-minded individuals the opportunity to purchase a bench that not only provides for rest and relaxation of park visitors and pedestrians, but also allows for the recognition of someone special in a unique and lasting manner. The cost of an installed memorial bench including stone bench, engraved plaque and concrete foundation is only \$914. If you would like to purchase a bench please stop at City Hall and fill out an application today.



Employment Opportunities

Oelwein Park and Recreation Positions

- ◆ Parks Laborer
- ◆ Cemetery Laborer
- ◆ Diamond Maintenance
- ◆ Coaches, Umpires
- ◆ Pool Positions
- ◆ Campground Host



Online City of Oelwein Application Form

http://cityofuelwein.org/images/Employment_Application_Fillable.pdf

Volunteering makes a difference!

The City of Oelwein Parks and Recreation Department welcomes all volunteers! Citizen assistance in keeping our city parks clean and usable is valuable to all in the community. You may volunteer individually or in groups. The needs are endless, from trash pickup and weed pulling, to some more involved projects that may require training and assistance from Park Management personnel. Park Management can provide trash bags, brooms, rakes and shovels for your project.



Please call (319) 283-1015 and sign up to become a park volunteer. Thank you!



The Oelwein Parks and Recreation Department would like to thank the following for their assistance and generosity in donations and/or volunteering their time this past season:

- ◆ Northeast Iowa Charitable Foundation
- ◆ Greg Bryan Construction
- ◆ Alliant Energy
- ◆ ITC / Lori Broghammer
- Wellmark Foundation
- ◆ Bodensteiner Implement Co.
- ◆ Trees Forever / Patty Reisinger
- ◆ Mauer Tree Services
- ◆ True Value Hardware
- ◆ Irvine Electric
- ◆ Corner Market
- ◆ Cannons Greenhouse
- ◆ Rite Price
- ◆ Diamond Vogel / Paint Iowa Beautiful
- ◆ Weiland Lumber
- ◆ City Hall Staff
- ◆ Friends of the Trails Committee
- ◆ Tree Board and Trail Committee
- ◆ Park and Recreation Board Members
- ◆ Council and Administration
- ◆ Oelwein Community School District
- ◆ Oelwein American Legion
- ◆ Wellmark Foundation
- ◆ United Way / Sarah Scheel
- ◆ Ace Hardware
- ◆ Roger and Bobbi Polark
- Oelwein Rotary / Rotary District 5970
- Oelwein Lions Club
- Pawsitively Oelwein
- Kluesner Construction

