



Dhruv Patel

+91 96011 84787

mounthealindustries@gmail.com

Company Profile for

MounHeal Industries

GST - 24CRKPP6583Q1ZQ

Address - Shed no. 53-54, Vishala Gold
Ind. Estate, NR S. P. Ring Road, Odhav,
Ahmedabad - 382415

<https://mounthealindustries.in/>

Presentation Structure

- About Us
- Machine Details
- Other Facilities
- Processing Flow
- Sample Products

About Us

ISO Certified company (ISO 9001:2015)

3 VMC Machines

5 CNC Machines

Special QC Department

Staff – 18 to 20 persons



Machine Details

VMC Machines

- ACE Design – V1260- 1280 X 600 X 600
- Cosmos – CVM1160 – 1100 X 650 X 650
- ACE Design – MCV400 – 600 X 450 X 500

CNC Machines

- ACE DESIGN – Jober XL – D200 X L400
- ACE Design – Super Jober 500 – D250 X L500
- ACE Design – Jober Junior – D165 X L250
- Pride Machine – Jaguar – D200 X L500
- Bhavya Machine Tool – CJK6130 – D135 X L200

Other Facilities

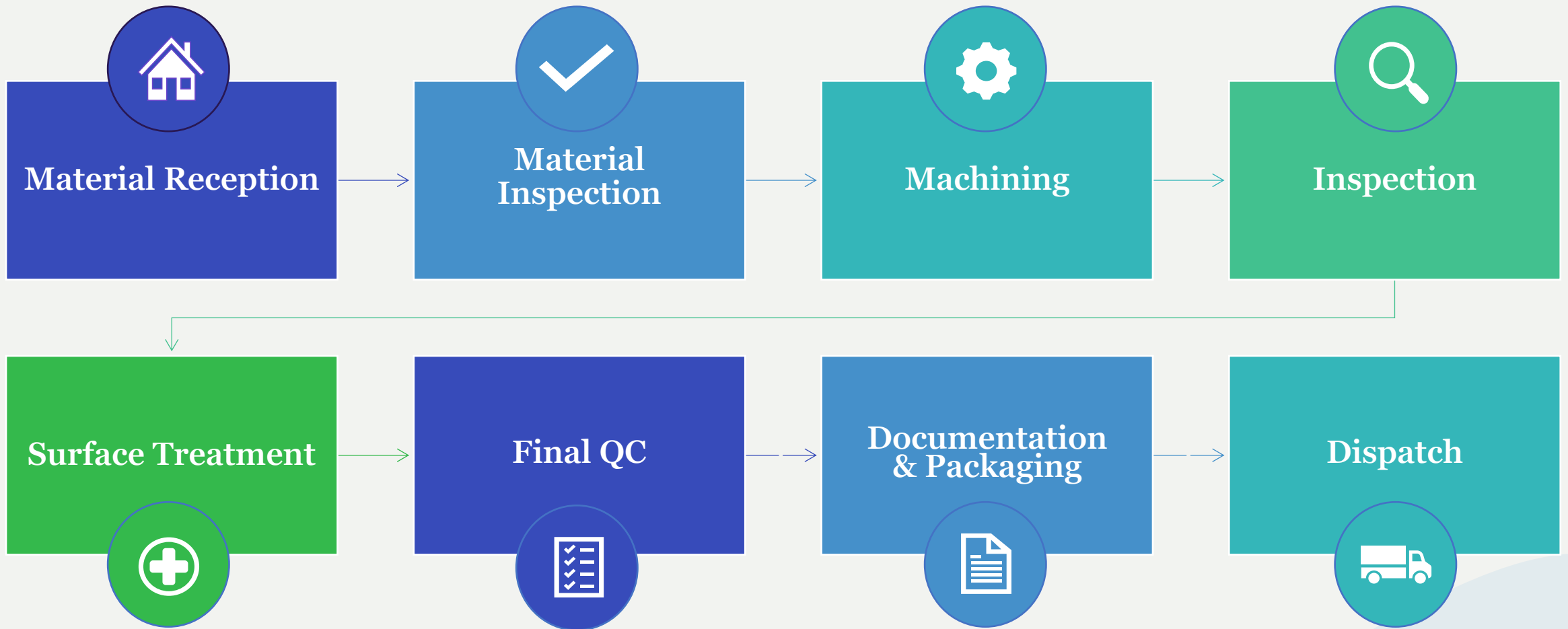


- Auto Bandsaw – 5mm to 200mm
- Manual Bandsaw – 5mm to 300mm
- Pillar drill machine (3)
- Lathe Machine – 4.5FT Conventional lathe
- Digital Height Gauge for QC department (Insize)
- Proper material handling equipment
- Specific allotted area for Finish goods & Raw materials

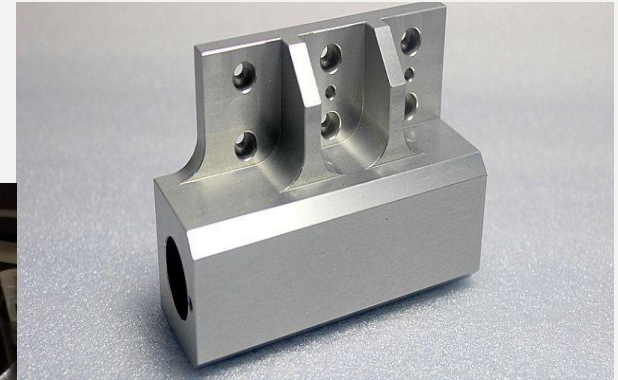
Our Clients

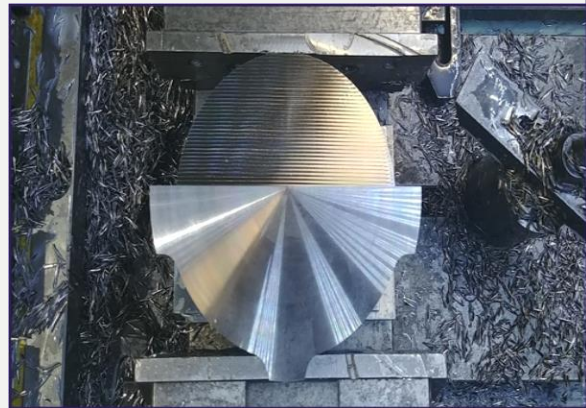
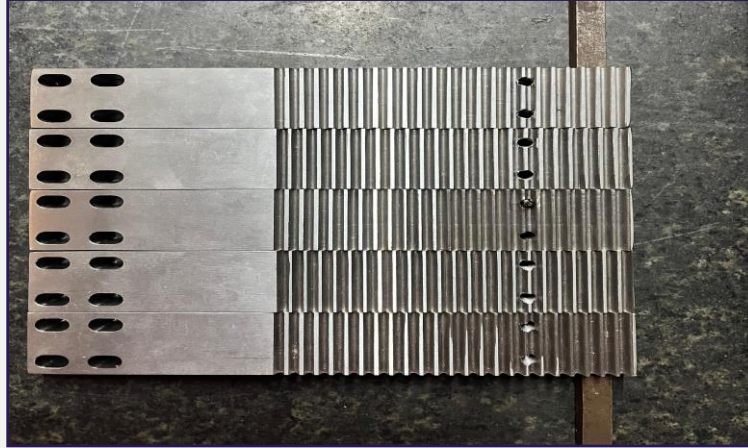
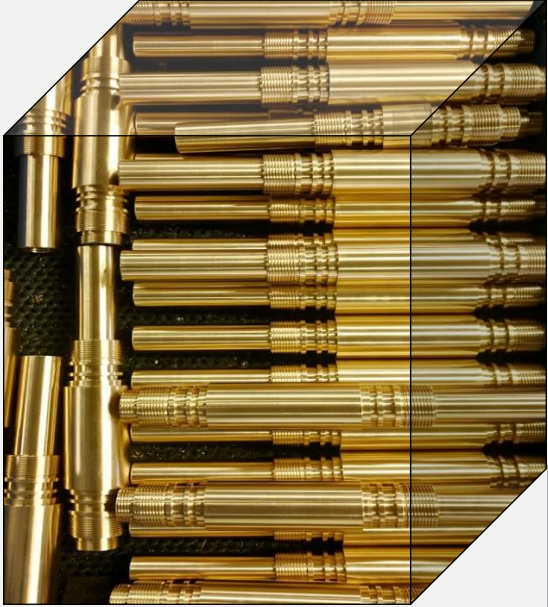


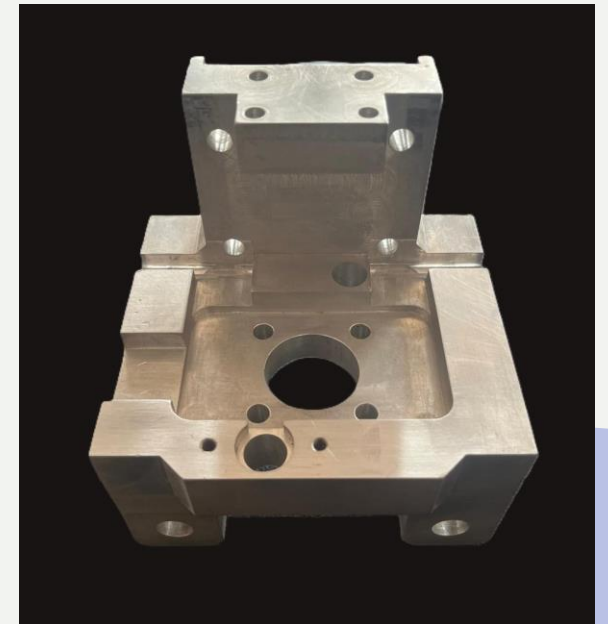
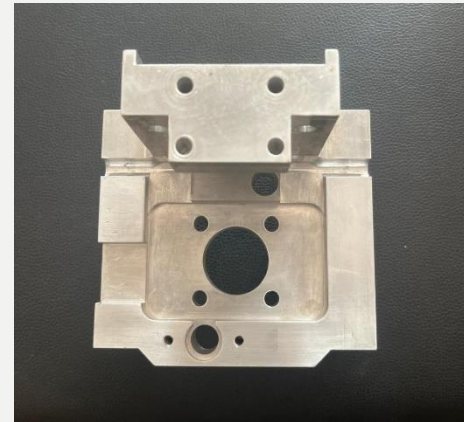
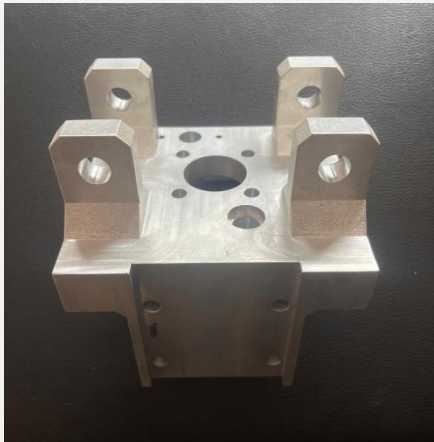
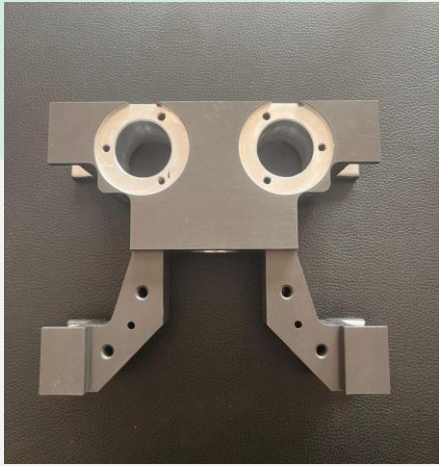
Processing Flow

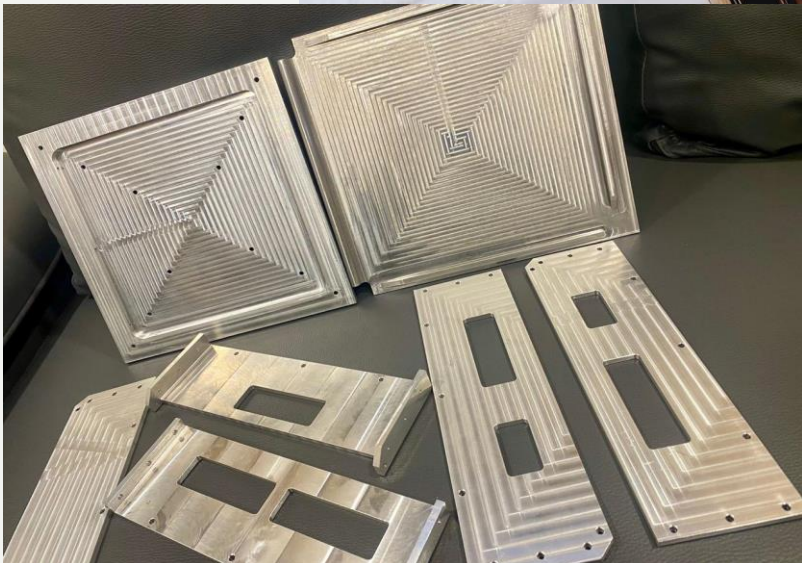


Sample Products











THANK YOU