



## Billund Airport Case study

### Project: Securing Billund Airport

For some time, Billund Airport had experienced slip and fall accidents in the passageways leading to and from the planes.



Billund Airport has experienced great growth in passenger numbers over several years and today stands out as Denmark's 2nd largest airport.

#### Challenge

in 2009, Billund Airport experienced slip and fall accidents on the walkway bridges leading to and from the planes - and searched the market for a solutions that could upgrade safety and withstand heavy loads. Ensuring the safety of passengers and staff is a top priority for the airport, and they spent a year testing several solutions.

#### Real Safety Solutions

After a thorough testing period, Billund Airport decided to use the solutions from Real Safety. For several years, Real Safety has delivered non-slip solutions to a variety of industries in Denmark - including the offshore industry, where the environment is harsh and where accident prevention takes precedence over everything else.

As a result, our solution has been tried and tested in the harshest of environments, adhere to strict safety regulations - and stands the test of time.

#### A unique anti-slip solution

In contrast to common anti-slip solutions, such as tape and paint mixed with sand, Real Safety's anti-slip covers are long-lasting.

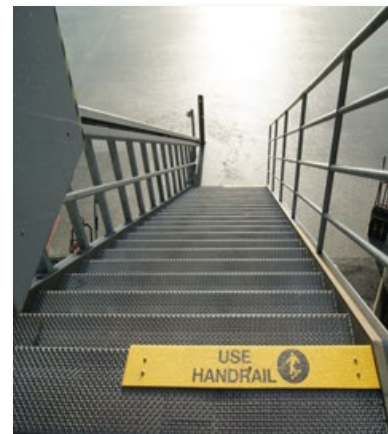


# Billund Airport Case study

Real Safety's anti-slip safety covers are easy and quick to install - without the use of hot work!

These are fiberglass profiles with embedded silicon carbide, which in terms of strength and hardness, measure up to diamonds.

The anti-slip covers were produced to order, and as we often do with our safety solutions, they were also embedded with pictograms and text information. All passengers are now met by a non-slip step on the stairs with the text: "Use handrail". By remembering to hold on to the railing, many falling accidents can be avoided!



In total, 600m<sup>2</sup> were upgraded with our safety solution.

## Walkways prior to safety upgrade



## After installation of anti-slip surfaces and signage

