

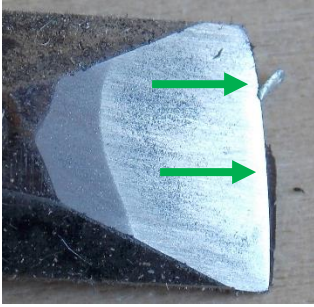


CORNWALL WOODCARVERS

Burrs

What are they and what to do about burrs – by J Samworth

When sharpening tools very fine 'ribbons' of metal are formed on the cutting edge, these are called burrs. See the picture to the left. These burrs are very fine, thinner than tin foil and need to be removed before using the tool. If left on, they will fold back upon themselves effectively dulling the edge.



Here I was attempting to put some life back in an old carpenter's chisel which had been abused. But burrs can appear on any profile chisel.



Burrs are removed by stropping, but because they are so fine, they tend to bend out of the way. For this reason, you need to strop the inside edge too and repeat the cycle until the burr has been removed. Alternatively use a buffing wheel.



Warning: burrs can be very sharp avoid touching the burr. They are very light and can be caught by a draft being inhaled or entering an eye, if this happens seek medical help.

© All pictures and written text are copyright of CWC.