

2024 Summer Camp & Program Directory



Region 10 State Support Team
4801 Springfield Street
Dayton, OH 45431
(937) 236-9965
www.sst10.org

Proudly serving the needs of districts, schools & families in: Clark, Darke, Greene, Miami, Montgomery and Preble Counties



Table of Contents

Camps for Kids with Special Needs 3

Different Types of Camps 3
Benefits of Camp 3
Starting Your Camp Search 4
Doing Your Research 4
Questions to Ask 5

Helpful Websites 6

Disability Specific Categories 7

Residential Camps 9

ADAPTIVE SPORTS AND LEISURE SLEEPAWAY CAMP 10
AKRON ROTARY CAMP 11
AUTISM 1 WEEKEND CAMP 12
AUTISM 2 WEEKEND CAMP 13
CAMP CHEERFUL 14
CAMP ECHOING HILLS 15
CAMP FLAME CATCHER 16
CAMP HAMWI JUNIOR CHALLENGE 17
CAMP HAMWI SENIOR CHALLENGE 18
CAMP HO MITA KODA 19
CAMP KO-MAN-SHE 20
CAMP KORELITZ 21
CAMP MILLHOUSE 22
CAMP NUHOP 23
MUSCULAR DYSTROPHY ASSOCIATION SUMMER CAMP 26
MUSCULAR DYSTROPHY ASSOCIATION SUMMER CAMP 27
PRADER-WILLI SYNDROME SUMMER RESIDENTIAL CAMP 28
RECREATION UNLIMITED 29
RECREATION UNLIMITED WINTER RESIDENTIAL CAMP 30
STEPPING STONES STAYCATIONS 31
YMCA CAMP KERN 32

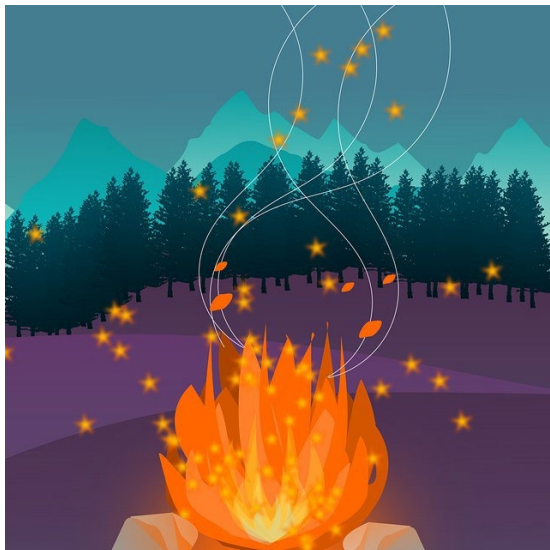
Day Camps, Day Programs & Respite Weekends 35

ABILITIES FIRST 36
AKRON ROTARY CAMP 39
CAMP CHEERFUL DAY CAMP 40
CAMP CHEERFUL SENSATIONAL ESY PROGRAM 41
CAMP CHRISTOPHER SUMMER DAY CAMP 42
CAMP DISCOVERY 44
CLOVERNOOK CENTER SUMMER CAMP 45
EVERY DAY MAGIC CAMP 46
FACETS THEATRE 47
GOOD WORKS FARM SUMMER DAY CAMP 48
KIDS CAMP 49
OHIO SCHOOL FOR THE DEAF SUMMER CAMPS 50
RECREATION UNLIMITED SUMMER DAY CAMP 53
RECREATION UNLIMITED YEAR-ROUND RESPITE & WEEKEND CAMPS 54
STEPPING STONES DAY CAMP 55

Summer Programs 56

Therapeutic Horsemanship Program at the Achievement Centers' Camp Cheerful! 57

Camps for Kids with Special Needs



Ah, summer camp. The mosquitoes, the swim races, the friendships, the bug juice, the postcards home. What child wouldn't benefit from the fun and structured freedom camps provide?

Kids with special needs are no exception. But the idea can seem challenging to parents and kids alike - how can you be sure that your child will get the attention he or she needs? Will your child be able to participate fully? What about the other kids? Will your child make friends? Will they understand your child's special needs?

The good news is that there are many camp choices for kids with special needs. From highly specialized camps to regular camps that accommodate kids with special needs, options abound.

Different Types of Camps

When it comes to camps, kids with special needs have as many choices as other kids. The Americans with Disabilities Act (ADA) requires all camps to make reasonable accommodations (such as the installation of wheelchair-accessible ramps) so that kids with special needs can attend. So, camps that previously couldn't host kids with special needs might now be on your list of possibilities.

Inclusionary (or mainstream) camps do just what their name implies: They include kids with special needs in their groups of children with regular needs. These camps may have started out serving only a general population of kids, but they've gradually changed as the needs of the families they serve have changed.

Some camps are designed just for kids with special needs, including kids who have learning or behavioral problems, those with specific chronic illnesses, and kids with mental or physical impairments. Many accept kids with a variety of needs, but some only accept kids with specific problems (such as camps for kids with diabetes, cancer, speech or hearing impairment, cystic fibrosis, cerebral palsy, epilepsy, etc.).

Within all of these categories, you'll have even more choices to consider regarding length of stay, philosophy, and cost. There are nonprofit and for-profit camps, religious camps, camps run by national organizations, private camps, day camps, camps that run weekend sessions, and sleepover camps that accept kids for the entire summer.

Benefits of Camp

The benefits of camps for kids with special needs are often the same as for any child:

- increased confidence and independence
- activity and exercise
- the opportunity to interact with other kids, develop social skills, and build relationships
- positive role modeling by adults
- a chance for parents to have a much-needed break

Independence is an important camp benefit. For example, an overnight mainstream camp can give special-needs kids the chance to be without parents, doctors, or physical therapists for a week. They'll do more things for themselves and learn how to ask others for help, which can boost problem-solving and communication skills.

Camp also provides the physical benefits of increased activity. Many kids with disabilities or chronic illnesses are sedentary and don't get to participate in the sports or recreational activities that their peers do. They therefore miss out on the social and health benefits that exercise brings.

Camp provides a variety of activities such as swimming, wheelchair racing, dancing, tennis, or golf. These type of activities can have both mental and physical health benefits and your child may discover recreational options that can carry over into adult life. Many camps combine learning environments with these physical activities, giving kids with behavioral or learning problems the chance to develop, or catch up on, needed skills during the summer.

Starting Your Camp Search

To find a camp, make lists of the basics you're looking for: a list of goals, a list of caretaking priorities, and a list of other considerations (such as cost).

Then consider which type of camp might best suit your child:

- inclusionary (or mainstream) camps
- camps for kids with a specific special need
- camps for kids with many different kinds of special needs

Consider whether your child has ever been away from home, for the weekend or even longer, and what experiences might have helped prepare him or her for camp. This will help you to decide not only the type of camp, but whether your child is ready for a day camp or a sleepover (residential) camp.

Involving kids in the camp search will help to ensure that they get the most out of the camp selected. So, ask your child:

- What do you want to get out of summer camp?
- What are your preferences?
- Do you want to go to a coed camp, or just be around kids of the same gender?
- Are there any activities you really want to try?
- Would you be more comfortable going to a camp with kids who do or don't have special needs?
- Are you comfortable being away from home? If so, for how long?
- Do you have classmates or friends who have gone to a summer camp? If so, which ones? And did they like it?
- Do you have a friend who you would like to go to camp with? What camp will they be attending?

If it turns out that the idea of camp is a bit overwhelming for both you and your child, you might want to try starting small, like weekend sessions at a special-needs camp.

Doing Your Research

Whatever type of camp you're leaning toward, it's important to do your research. Many places offer information — the American Camping Association (ACA), for example, has an online listing of special-needs camps broken down by the types of camps, cost, length of stay, state/region, and campers' ages. The site is also loaded with general and age-appropriate advice for parents of would-be campers.

You also can call local chapters of major disability organizations about camps in your area. Many organizations publish lists of camps and can connect you with camp directors and former campers.

You might have a special-needs camp fair in your area. Check the calendar listings in your local newspapers and monthly parenting magazines. Many of these are held in January or February, which means that you need to start your camp search early.

Of course, part of your research will involve figuring out what you can afford. The cost of camps varies widely, with some high-end special-needs camps costing thousands of dollars for multiple-week sessions.

You can help fund your child's camp experience by applying for scholarships — experts say to do so from December through March, because the money is gone by April or May. You can contact charitable organizations and fraternal organizations (such as the Lions, Kiwanis, and Rotary Clubs, all of which sponsor special-needs camps). And depending on your child's specific special need, he or she may be eligible for financial aid from your state. Other sources of scholarships include religious or ethnic charities.

One thing to know: You usually **first** need to find a camp that can take your child — most of these organizations send the scholarship money to the camp in the child's name, not to the parents directly.

Questions to Ask

So, how do you narrow down your choices and pick the camp that's right for your child? Some basic and special-needs-specific questions you'll need to have answered include:

- How long are the sessions?
- What's the cost? Are scholarships available?
- Is it coed, girls-only, or boys-only?
- What's the age range of campers?
- Where is it located? How far away from your home is it?
- What's the staff-to-camper ratio?
- How old are most of the counselors?
- What type of certification do the counselors have?
- What's the turnover rate? Do kids and staff come back?
- What's the camp's philosophy? Does it fit with your goals for your child?
- What's the camp's transportation system like?
- If physical accessibility is an issue, what's the layout of the camp? What provisions has the camp made (or can it make) for wheelchairs or crutches?
- If your child needs a special diet, can the camp provide appropriate meals? If not, can you provide food for your child?
- Do staff members have a background working with kids with special needs?
- If your child has behavior problems, are camp staffers trained to handle such problems?
- Do the counselors have first-aid training?
- What kind of medical and nursing staff is available in the infirmary and during what hours? Can the staff administer any medications your child needs?
- What's the procedure if your child develops a complication related to his or her medical problems? How far is the nearest hospital? If your child needs specialized treatment, is it available at that hospital?

Although you can get some of this information through phone calls, emails, brochures, and websites, experts recommend visiting the camp. You can talk to the director, see the rooms or cabins, and get a comprehensive picture of where your child will be.

Probably the only way to get a true feel for the camp is for you and your child to visit it together. This is especially important if your child is going to a regular (inclusionary or mainstream) camp where they haven't hosted many children with special needs before. This gives you a chance to point out changes they might need to make and see how the camp's staff responds to your requests.

If you can't visit a camp, interview the director and some staff members to get a feel for the place. Ask them to describe the physical layout and the kinds of activities your child will do. Also ask to speak with other families whose kids have attended to see what their experiences were like. In fact, word of mouth is one of the best ways to find out what you need to know about each camp.

As you're trying to figure out which camp is best, just remember that whatever the special need, there's likely a camp out there to suit your child. With some research and understanding between you, your child, and the camp director, your camper-to-be can have an unforgettable summer.

*Taken from: <http://kidshealth.org>,
Reviewed by: KidsHealth Medical Experts*

Helpful Websites

ActivityHero | www.activityhero.com

ActivityHero helps parents find and book kids after-school activities and summer camps. We're driven by our mission to keep kids active and save parents from frustrations by providing complete, accurate and up-to-date information covering the full spectrum of activities available to kids during their out-of-school time.

American Camp Association | www.acacamps.org

This organization helps parents select camps that meet industry and government standards as well as camps for children with special needs.

Camp Channel | www.campchannel.com

This site guides visitors to the right summer camp for them and also offers an automated search engine that provides a directory of camps, a home shopping center for camp needs and more.

CampPage Guide to Summer Camps | www.camppage.com

Children's summer camps and wilderness programs for boys and girls in the United States and Canada.

Kidscamps.com | www.kidscamps.com

This website includes a searchable database of camps listed by their specialties.

My Summer Camps | www.mysummercamps.com

Youth camp resource guide

Summer Camp Search | www.summercamps.com

Web-location for parents and family members to research, find and book the very best summer camps.

Very Special Camps | www.veryspecialcamps.com

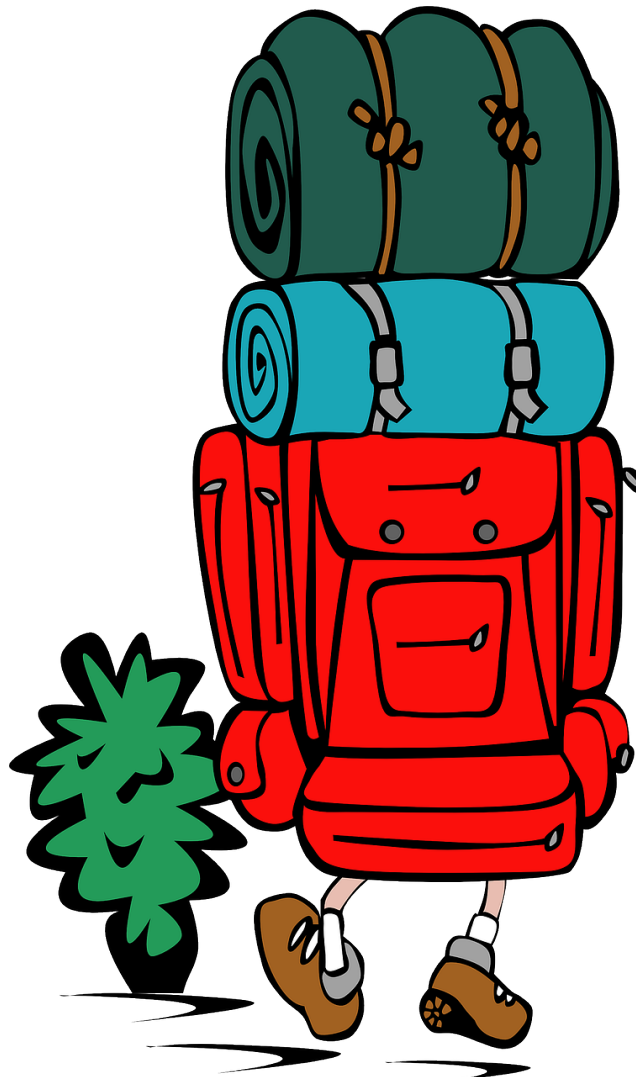
Specialized directory of camps dedicated exclusively to serving individuals with special needs.

Disability Specific Categories

Intellectual disability	Means significantly sub average general intellectual functioning, existing concurrently with deficits in adaptive behavior and manifested during the developmental period that adversely affects a child's educational performance.
Deaf and hearing impaired	<p>Deafness means a hearing impairment that is so severe that the child is impaired in processing linguistic information through hearing, with or without amplification that adversely affects a child's educational performance.</p> <p>Hearing impairment means an impairment in hearing, whether permanent or fluctuating, that adversely affects a child's educational performance but that is not included under the definition of deafness in this rule.</p>
Speech or language impairment	Means a communication disorder, such as stuttering, impaired articulation, language impairment, or voice impairment that adversely affects a child's educational performance.
Emotional disturbances	<p>Means a condition exhibiting one or more of the following characteristics over a long period of time and to a marked degree that adversely affects a child's educational performance.</p> <ul style="list-style-type: none">• An inability to learn that cannot be explained by intellectual, sensory, or health factors;• An inability to build or maintain satisfactory interpersonal relationships with peers and teachers;• Inappropriate types of behavior or feelings under normal circumstances;• A general pervasive mood of unhappiness or depression; and• A tendency to develop physical symptoms or fears associated with personal or school problems. <p>The term includes schizophrenia. It does not apply to children who are socially maladjusted, unless it is determined that they have an emotional disturbance.</p>
Orthopedic impairment	Means a severe orthopedic impairment that adversely affects a child's educational performance. The term includes impairments caused by congenital anomaly (e.g., clubfoot, absence of some member, etc.), impairments caused by disease (e.g., poliomyelitis, bone tuberculosis, etc.), and impairments from other causes (e.g. cerebral palsy, amputations, and fractures or burns that cause contractures).
Autism	Means a developmental disability significantly affecting verbal and nonverbal communication and social interaction, generally evident before age 3, which adversely affects a child's educational performance.
Blind and visually impaired	Visual impairment including blindness means an impairment in vision that, even with correction, adversely affects a child's educational performance.
Deafblind	Means concomitant hearing and visual impairments, the combination of which causes such severe communication and other developmental and educational needs that they cannot be accommodated in special education programs solely for children with deafness or children with blindness.
Multiple disabilities	Means concomitant [simultaneous] impairments (such as intellectual disability-blindness, intellectual disability-orthopedic impairment, etc.), the combination of which causes such severe educational needs that they cannot be accommodated in a special education program solely for one of the impairments. The term does not include deaf-blindness.

Traumatic brain injury	Means an acquired injury to the brain caused by an external physical force, or by other medical conditions, including but not limited to stroke, anoxia, infectious disease, aneurysm, brain tumors and neurological insults resulting from medical or surgical treatments. The injury results in total or partial functional disability or psychosocial impairment or both, that adversely affects a child's educational performance. The term applies to open or closed head injuries, as well as to other medical conditions that result in acquired brain injuries. The injuries result in impairments in one or more areas such as cognition; language; memory; attention; reasoning; abstract thinking; judgment; problem-solving; sensory, perceptual, and motor abilities; psychosocial behavior; physical functions; information processing; and speech. The term does not apply to brain injuries that are congenital or degenerative, or to brain injuries induced by birth trauma.
Other health impairments	Means having limited strength, vitality or alertness, including a heightened alertness to environmental stimuli, that results in limited alertness with respect to the educational environment, that is due to chronic or acute health problems such as asthma, attention deficit disorder or attention deficit hyperactivity disorder, diabetes, epilepsy, a heart condition, hemophilia, lead poisoning, leukemia, nephritis, rheumatic fever, and sickle cell anemia, and adversely affects a child's educational performance.
Specific learning disability	Means a disorder in one or more of the basic psychological processes involved in understanding or in using language, spoken or written, that may manifest itself in an imperfect ability to listen, think, speak, read, write, spell, or to do mathematical calculations, including conditions such as perceptual disabilities, brain injury, minimal brain dysfunction, dyslexia, and developmental aphasia. The term does not include learning problems that are primarily the result of visual, hearing, or motor disabilities; of mental retardation; of emotional disturbance; or of environmental, cultural, or economic disadvantage.
Twice exceptional student	Gifted means students identified as having a disability (listed above except Intellectual disability) that has also been identified as meeting the minimum threshold on all three parts of indicators: performance progress and input.
Developmental delay	Means a child who is experiencing a delay as determined by an evaluation team, IEP team, and other qualified professional in one or more of the following areas of development: <ul style="list-style-type: none"> • Physical development; • Cognitive development; • Communication development; • Social or emotional development; or • Adaptive development.

Residential Camps



ADAPTIVE SPORTS AND LEISURE SLEEPAWAY CAMP

**Clovernook Camp Abilities Ohio
Miami University
Oxford, Ohio 45056**

Residential Camp

CLIENTELE: Blind and visually impaired

AGE RANGE: 8 through 17 years of age

SESSIONS: June 16-21

FEES: \$495

CAMPERSHIPS: Some limited scholarships may be available

OTHER INFORMATION: All overnight accommodations, meals and snacks will be provided. Drop-off will start at 2:00 p.m. on Sunday, June 16. Campers will be dismissed at 12:00 p.m. following checkout procedures on Friday, June 21. Following checkout, campers, families and staff are invited to a celebratory cookout to share lunch and say goodbye to friends.

Students who wish to attend this camp must be able to follow directions and participate in camp activities. There will be a behavior contract signed by both students and parents and students may be sent home if this contract is violated.

MAKE INQUIRIES TO: Clovernook Center
Kelly Lusk
(615) 305-7835
klusk@clovernook.org

AKRON ROTARY CAMP

4460 Rex Lake Drive
Akron, OH 44319

Residential Camp

CLIENTELE: Autism, deaf-blindness, deafness, emotional disturbance, hearing impairment, intellectual disability, multiple disabilities, orthopedic impairment, other health impairment, speech or language impairment, traumatic brain injury, visual impairment including blindness

AGE RANGE: 6 through 17 years of age

SESSIONS: Week 1: June 2-7
Week 2: June 9-14
Week 4: June 23-28
Week 5: July 7-12
Week 6: July 14-19
Week 7: July 21-26

FEES: \$940 per week

CAMPERSHIPS: Yes

APPLICATION DEADLINE: June 2, 2024

ACTIVITIES: Boating, swimming, ropes course, arts and crafts, nature, canoeing and kayaking, sports and games, and so much more!

OTHER INFORMATION: Sunday check-in 3:00 - 5:00 pm, Friday check-out 10:00 - 11:00 a.m. Our counselor-to-camper ratio is 1:3. The goals of Overnight Camp are to increase camper's independence and self-esteem, encourage campers to try new leisure activities and become more physically active, and develop social skills.

MAKE INQUIRIES TO: Akron Rotary Camp
4460 Rex Lake Drive
Akron, OH 44319
(330) 644-4512
(330) 644-1013 - FAX
kyleb@akronymca.org

www.gotcamp.org

AUTISM 1 WEEKEND CAMP

**Recreation Unlimited
7700 Piper Road
Ashley, OH 43003**

Weekend Camp

CLIENTELE: Autism (ASD) and typical siblings

AGE RANGE: 8 through 18 years of age

SESSIONS: May 31-June 2 (tentative)

FEES: Please email info@recreationunlimited.org to review the funding criteria, scholarship availability or to register for specialty camp sessions.

APPLICATION DEADLINE: First come, first served

OTHER INFORMATION: Pick up 8:00 a.m. because of Family Day. If you prefer to fill out and mail in a paper registration and application, a one-time, annual registration fee of \$45 will be required. For a paper registration and application, contact mhiggins@recreationunlimited.org.

MAKE INQUIRIES TO: Recreation Unlimited
7700 Piper Road
Ashley, OH 43003
(740) 548-7006 ext. 103
(740) 747-2640 or (740) 747-3139 - FAX
mhiggins@recreationunlimited.org
(Michelle Higgins - Sr. Billing & Intake Coordinator)
nhutton@recreationunlimited.org
(Natalie Hutton - Camps Director)

www.recreationunlimited.org

AUTISM 2 WEEKEND CAMP

Recreation Unlimited 7700 Piper Road
Ashley, OH 43003

Weekend Camp

CLIENTELE: Autism (ASD) and typical siblings

AGE RANGE: Youth ages 8 through 18 years of age

SESSIONS: August 9-11

FEES: Please email info@recreationunlimited.org to review the funding criteria, scholarship availability or to register for specialty camp sessions.

APPLICATION DEADLINE: First come, first served

OTHER INFORMATION: Check-in Friday 5:00 - 6:00 p.m. and check-out Sunday, call for times. If you prefer to fill out and mail in a paper registration and application, a one-time, annual registration fee of \$45 will be required. For a paper registration and application, contact mhiggins@recreationunlimited.org.

MAKE INQUIRIES TO: Recreation Unlimited
7700 Piper Road
Ashley, OH 43003
(740) 548-7006
(740) 747-2640 or (740) 747-3139 - FAX
mhiggins@recreationunlimited.org (Michelle Higgins - Sr. Billing & Intake Coordinator)
skelley@recreationunlimited.org (Sarah Kelley - Camps Director)

www.recreationunlimited.org

CAMP CHEERFUL

15000 Cheerful Lane
Strongsville, OH 44136

Residential Camp

- CLIENTELE: Physical, developmental, and sensory disabilities
- AGE RANGE: Ages 16 and older
- SESSIONS: Session 1: June 9-14 (registration deadline is May 19)
Session 2: June 16-21 (registration deadline is May 26)
Session 3: June 23-28 (registration deadline is June 2)
Session 4: June 30-July 3 (registration deadline is June 9)
Session 5: July 7-12 (registration deadline is June 16)
Session 6: July 14-19 (registration deadline is June 23)
Session 7: July 21-26 (registration deadline is June 30)
Session 8: July 28-August 2 (registration deadline is July 7)
Session 9: August 4-9 (registration deadline is July 14)
- FEES: Cost per session is \$1,500 (if using a waiver, the family self-pay portion is \$297.75 per session)
- ACTIVITIES: Hiking, swimming, fishing, arts and crafts, nature study activities, games, music, sports, and visits to the horse barn. In the evening, overnight campers have camp all to themselves to enjoy talent shows and camp fires.
- OTHER INFORMATION: Check-in starts on Sunday night at 7:00 p.m. with check-out by 11:00 a.m. Friday. There is a 1:3 counselor to camper ratio. Nurse is on duty 24 hours a day. Camp sessions are co-ed, but cabins are grouped by gender and age for sleeping purposes. Camp provides meals on full days of camp and breakfast on check-out days, as well as snacks.
- MAKE INQUIRIES TO: Camp Cheerful
Jenha Graska, Manager of Camp Programs
15000 Cheerful Lane
Strongsville, OH 44136
(440) 238-6200
jenha.graska@achievementctrs.org

<https://campcheerful.achievementcenters.org/program/overnight-camps/>

CAMP ECHOING HILLS

36272 CR 79
Warsaw, OH 43844

Residential Camp

- CLIENTELE: Individuals with all disabilities
- AGE RANGE: Ages 7 and up
- SESSIONS:
- Week 1: June 9-14 (staff to camper ratio 1:5) - ages 18 & up with mild developmental disabilities, autism, and/or physical disabilities (\$1,425 includes non-refundable room and board fee of \$250)
 - Week 2: June 16-21 (staff to camper ratio 1:3) - ages 18 & up with mild to moderate developmental disabilities, autism, and/or physical disabilities (\$1,550 includes non-refundable room and board fee of \$375)
 - Week 3: June 23-28 - Young Friends Week (staff to camper ratio 1:2-1:5) - ages 7-18 with intellectual/developmental disabilities, autism and/or physical disabilities | Siblings can attend (\$1,425 includes non-refundable room and board fee of \$250, siblings cost is \$700 includes non-refundable room and board fee of \$250)
 - Week 4: June 30-July 5 - Hand over Hand (staff to camper ratio 1:2) - ages 18 & up with severe developmental disabilities, autism and/or severe physical disabilities (\$1,675 includes non-refundable room and board fee of \$500)
 - Week 5: July 7-12 (staff to camper ratio 1:3) - ages 18 & up with mild to moderate developmental disabilities, autism, and/or physical disabilities (\$1,550 includes non-refundable room and board fee of \$375)
 - Week 6: July 14-19 - Young Friends Week (staff to camper ratio 1:2-1:5) - ages 7-18 with intellectual/developmental disabilities, autism and/or physical disabilities | Siblings can attend (\$1,425 includes non-refundable room and board fee of \$350, siblings cost is \$700 includes non-refundable room and board fee of \$250)
 - Week 7: July 21-26 (staff to camper ratio 1:3) - ages 18 & up with mild to moderate developmental disabilities, autism and/or physical disabilities (\$1,550 includes non-refundable room and board fee of \$375)
 - Week 8: July 28-August 2 (staff to camper ratio 1:5) - ages 18 & up with mild developmental disabilities, autism and/or physical disabilities (\$1,425 includes non-refundable room and board fee of \$250)
- CAMPERSHIPS: Scholarships are available; however, to ensure our camper financial aid can go as far as possible, we encourage you to partner with your local county to see what funds are available through them. Additionally, waiver funds are accepted. Once you have exhausted those options, please request scholarship dollars.
- ACTIVITIES: Swimming, go-karts, talent show, frontier challenge course, hay wagon rides, cookout, s'mores, and much more!
- MAKE INQUIRIES TO: Camp Echoing Hills
36272 CR 79
Warsaw, OH 43844
(800) 419-6513 Option 4
donna.shallenberger@ehvi.org
<https://ehvi.org/recreation-2/>

CAMP FLAME CATCHER

Camp Kern
5291 State Route 350
Oregonia, OH 45054

Residential Camp

CLIENTELE: Autism, intellectual disability, multiple disabilities, orthopedic impairment, other health impairment, specific learning disability, epilepsy

AGE RANGE: 8 through 21 years of age

SESSIONS: Spring Camp: April 12-14
Summer Camp: July 7-11
Fall Camp: September 20-22

FEES: \$200 for weekend camps
\$400 for the summer week long camp

CAMPERSHIPS: Financial assistance is available

SPONSOR(S): Epilepsy Alliance Ohio

ACTIVITIES: Hiking, arts & crafts, swimming, archery, horseback riding, fishing, boating, shooting BB guns, canoeing, kayaking, hay rides, singing, scaling a climbing wall and much, much more.

OTHER INFORMATION: In order to attend camp, all campers need to have the Participant Enrollment Form completed by parents/guardians and the Master Medical Form completed by your child's primary care physician or neurologist.

MAKE INQUIRIES TO: Epilepsy Alliance Ohio
Mark Findley
895 Central Avenue
Suite 550
Cincinnati, OH 45202
(877) 804-2241
mfindley@epilepsy-ohio.org

www.epilepsy-ohio.org

CAMP HAMWI JUNIOR CHALLENGE

Camp Mohaven
18744 Turkey Ridge Road
Danville, OH 43014

Residential Camp

CLIENTELE: Type 1 Diabetes
AGE RANGE: 7 through 12 years of age
SESSIONS: July 28-August 3
FEES: \$200

Scholarships are available to cover or help cover the entrance fee for any family who qualifies based on income.

APPLICATION DEADLINE: July 1, 2024

ACTIVITIES: Activities and programs are geared to entertain and encourage our youngest resident campers. Hayrides, water games, a talent show, and a treasure hunt are a few of the outrageous activities that make this program full of wholesome fun and delight. Special programs highlighting Junior week include a spectacular carnival celebration where everyone comes dressed in their zaniest attire.

MAKE INQUIRIES TO: LifeCare Alliance
Anthony Myer
1699 W Mound St
Columbus, OH 43223
(614) 437-2914
amy@lifecarealliance.org
<https://www.lifecarealliance.org/programs/coda/camp-hamwi/about/#camp-programs>

CAMP HAMWI SENIOR CHALLENGE

Camp Mohaven
18744 Turkey Ridge Road
Danville, OH 43014

Residential Camp

CLIENTELE: Type 1 Diabetes

AGE RANGE: 13 through 17 years of age

SESSIONS: Week One: July 14-20
Week Two: July 21-27

FEES: \$200

CAMPERSHIPS: Scholarships are available to cover or help cover the entrance fee for any family who qualifies based on income.

APPLICATION DEADLINE: July 1, 2024

ACTIVITIES: From beginners to more practiced individuals, Camp Hamwi offers a diverse program for any skill level. The camp environment promotes a sense of team spirit and good sportsmanship in individual and group activities, and competitive and non-competitive challenges. Campers are encouraged to try new skills, and explore their unique individual potentials. Activity options include horseback riding, archery, volleyball, soccer, canoeing, swimming, arts and crafts, drama, dance, outdoor living skills, nature crafts and outdoor adventure. Incorporated into the daily schedule are diabetes education sessions to increase campers' understanding of diabetes. Each week, the program is specially designed to address the interests of a particular age group.

MAKE INQUIRIES TO: LifeCare Alliance
Anthony Myer
1100 Dennison Avenue
Columbus, OH 43201
(614) 437-2914
amy@lifecarealliance.org
<https://www.lifecarealliance.org/programs/coda/camp-hamwi/about/#camp-programs>

CAMP HO MITA KODA

14040 Auburn Road
Newbury, OH 44065

Residential Camp

CLIENTELE: Type 1 Diabetes

AGE RANGE: Serving campers in grades K-11

SESSIONS: Traditional Camp: June 9-15 - Grades K-6 - \$800
Traditional Camp: June 16-22 - Grades K-6 - \$800
Mini-Camp: June 24-28 - Grades K-11 - \$575
Backpacking Camp: June 24-28 - \$575
Traditional Camp: June 30-July 6 - Grades 7-11- \$800
Traditional Camp: July 7-13 - Grades 7-11 - \$800
Family Camp: August 30-September 1 - \$125

CAMPERSHIPS: Yes

APPLICATION DEADLINE: On-going

SPONSOR(S): Camp Ho Mita Koda Foundation

ACTIVITIES: Swimming (lake & pool), archery, slingshots, mountain biking, lake inflatables, arts & crafts, Tomahawk throwing, low ropes challenge course; rock climbing, high ropes challenge course, fishing, canoeing kayaking outdoor education, T1D education and much more!

OTHER INFORMATION: A \$100 non-refundable deposit is required at the time of registration to secure a spot.

MAKE INQUIRIES TO: Camp Ho Mita Koda
14040 Auburn Road
Newbury, OH 44065
(440) 739-4095
info@camphomitakoda.org
www.camphomitakoda.org

CAMP KO-MAN-SHE

**Camp Willson Outdoor Center
2732 County Road 11
Bellefontaine, OH 43311**

Residential Camp

CLIENTELE: Type I diabetes

AGE RANGE: 7 through 17 years of age

SESSIONS: June 30-July 6

FEES: \$400
\$50 Registration Fee

APPLICATION DEADLINE: May 31, 2024

CAMPERSHIPS: If you are requesting a campership, you are still required to pay the \$50 Registration Fee. You will be able to complete your request and upload appropriate documents in CampDoc before May 31, 2024.

ACTIVITIES: Hiking, archery, canoeing, low ropes course, group games, tennis, swimming, dancing, arts & crafts and fishing

OTHER INFORMATION: Diabetes Dayton utilizes CampDoc for camp registration. If you are a returning camper, you will be notified when registration opens for the 2024 camp year. If you are a new camper you can fill out the registration form and submit it to our office and you will receive an invitation e-mail from CampDoc to complete your paperwork. Registration forms are due with payment by May 31, 2024. Later registrations may be accepted, as bunk availability allows. Final payment and forms due on June 21, 2024.

MAKE INQUIRIES TO: Diabetes Dayton
2555 South Dixie Avenue
Suite 112
Dayton, OH 45409
(937) 220-6611

www.diabetesdaytoncamp.com

CAMP KORELITZ

Camp Joy Outdoor Education Center
10117 Old 3 C Highway
Clarksville, OH 45113

Residential Camp

CLIENTELE:	Type I diabetes
AGE RANGE:	9 through 17 years of age
SESSIONS:	July 28-August 2
FEES:	To accommodate families' various financial situations, during registration you will be given three pricing options to select before checkout. Simply choose the option that best matches your family's financial means and continue with the checkout process as usual. For additional registration, financial assistance and payment details, view their Frequently Asked Questions.
ACTIVITIES:	Rope courses, gaga pit, hiking, swimming, camp fires, crafts and more!
OTHER INFORMATION:	Online registration is the easiest and fastest way to register for camp this year! If you cannot apply online, please contact campsupport@diabetes.org . All payments and final paperwork are due 30 days before the start of camp.
MAKE INQUIRIES TO:	campsupport@diabetes.org https://diabetes.org/tools-resources/get-connected/camp/find-a-camp/camp-korelitz

CAMP MILLHOUSE

25600 Kelly Road
South Bend, IN 46614

Residential Camp

- CLIENTELE: Autism, intellectual disability, deaf-blindness, deafness, hearing impairment, multiple disabilities, orthopedic impairment, other health impairment, specific learning disability, speech or language impairment, traumatic brain injury, visual impairment including blindness
- AGE RANGE: 7 through 75 plus
- SESSIONS: Week 1: June 16-21 (ages 18 & up)
Week 2: June 23-28 (ages 18 & up)
*Week 3: ONEderful Week - June 30-July 3 (all 1:1 campers)
Week 4: Kids' Week - July 7-11 (ages 7-17)
Week 5: July 14-19 (ages 18 & up)
**Week 6: Sports Week - July 21-26 (ages 13 & up)
- * "One"derful week is for campers who require one to one care.
** Sports week is for campers who are independent in their daily living skills and who enjoy sports. All activity periods are a different sport. There are no music or arts & crafts activity periods this week.
- FEES: Every camper is required to pay a \$150 deposit upon application which will hold their registration.
- CAMPERSHIPS: Yes
- APPLICATION DEADLINE: First come, first served, all paperwork/payment is due by May 1, 2024
- ACTIVITIES: Swimming, music, arts and crafts, adaptive art with specialized equipment, indoor and outdoor sports, low ropes challenge course, singing around the campfire and all-camp evening activities
- OTHER INFORMATION: The majority of our weeks are differentiated by age group. During these weeks we accept people with a range of needs, from people who are very independent to people who require one-on-one care. Trained and qualified counselors, 24-hour supervision, 24-hour nursing staff with special medication and diet supervision. All recreational and living facilities designed for people of all abilities!
- MAKE INQUIRIES TO: Camp Millhouse
25600 Kelly Road
South Bend, IN 46614
(574) 233-2202
(574) 233-2511 - FAX
campmillhouse@gmail.com

www.campmillhouse.org

CAMP NUHOP

1077 Township Road 2916
Perrysville, OH 44864

Residential Camp

CLIENTELE: Autism spectrum disorder, learning disabilities, attention deficit, mood disorders and other neurodiversities

AGE RANGE: 6 through 18+ years of age

SESSIONS:

Session 1: June 9-14

Traditional Camp - ages 8-18 - \$1,300

Haunted Ohio - ages 12-15 - \$1,600

Aqua - ages 14-18 - \$1,600

Session 2: June 16-21

Traditional - ages 8-18 - \$1,300

Science Camp - ages 14-18 - \$1,450

Great Outdoors - ages 14-18 - \$1,450

Expedition - ages 18-29 - \$1,600

Session 3: June 23-28

Nuhop Jr. Camp A **(6/23-25)** - ages 6-8 - \$600

Nuhop Jr. Camp B **(6/26-28)** - ages 6-8 - \$600

Traditional Camp - ages 8-18 - \$1,300

Art Camp - ages 11-15 - \$1,450

Lake Erie Camp - ages 12-15 - \$1,600

Session 4: July 7-12

Traditional - ages 8-18 - \$1,300

Animal Encounters - ages 9-13 - \$1,450

Wilderness Survival - ages 11-14 - \$1,450

Trains, Planes, and Automobiles - ages 12-15 - \$1,600

Session 5: July 14-19

Traditional Camp - ages 8-18 - \$1,300

Caves & Climbing - ages 14-18 - \$1,600

Life Skills - ages 18-29 - \$1,600

Session 6: July 21-26

Traditional Camp - ages 8-18 - \$1,300

Science Camp - ages 9-13 - \$1,350

Haunted Ohio Camp - ages 14-18 - \$1,600

FEES: Listed next to each session (please see other information for fee details)

ACTIVITIES: Camp Nuhop Programs

Traditional Camp (ages 8-18) - Our Traditional program is the foundation of Nuhop's summer program. There is an emphasis on positive social-emotional experiences so campers may build skills in communication, cooperation, and independence skills. This week is filled with outdoor adventure on and around our gorgeous 33-acre campground. The traditional camp offers a week of adventure in which campers hike the two nearby state parks, spend time in the water (swimming, tubing, slip 'n' sliding and canoeing), and so much more! Camping under the stars, cooking over a campfire, playing lots of games, arts, and crafts, and more are all part of the camp experience. Campers are grouped according to chronological and developmental age, allowing for more challenging adventures to be accomplished by older campers (such as longer hikes, stretching their limits, and participating in our giant swing.) As we put together camp groups, we look at age, abilities, and number of times at camp to determine what activities are best for that group to participate in!

Nuhop Jr. Camp (ages 6-8) - For our youngest first time adventurers, children ages six through eight, we offer Nuhop Jr. This half-week experience is a great building block for future success by practicing new skills and learning camp expectations in a less intensive environment! Campers will participate in a half-day hike in nearby state parks, go swimming and canoeing, and engage in many other Traditional Camp activities. Campers will experience an overnight under the stars not too far from the comforts of their cabins and begin learning about the magic of Nuhop. Young adventurers will come away with an understanding and comfort with the out-of-doors, increased independence, and a boost of self-confidence.

Mini Camp (ages 9-12) - For some of our campers, a full week of camp can be an intimidating first experience away from home. For campers aged 9-12, this half-week experience is a great building block for future success! Campers will get to experience hikes, swim times, canoe adventures, and a campout under the stars. Counselors will work with campers to build skills that will help them conquer a full week experience, such as independent skills, social communication, and teamwork!

Art Camp (ages 14-18) - Art Camp is designed to introduce budding artists to various artistic mediums. Campers will be able to participate in both visual and performing arts. Learning about sketching, photography, and pottery are a few of the artistic adventures campers may take part in during their week. Our budding artists will have the opportunity to go on a day excursion that may include exposure to some visual arts, performing arts, and even a visit to either the Cleveland or Columbus Art Museum.

Science Camp (ages 14-18) - Interested in exploring science? If you are, then science camp is the camp you will want! Learning the scientific method and doing age-appropriate daily experiments is the goal of science camp. The week is packed full of activities and experiments that our future scientists will take part in: bottle rocket launch, a parachute-egg-drop, electrical circuits work, exploring chemical and physical change, as well as learning about the life cycles of plants and animals, amongst other things. A day trip to COSI, the Great Lakes Science Center, or the Natural History Museum will be a highlight of the week at Science Camp!

Animal Encounters Camp (ages 9-13) - Campers will get an opportunity to have some hands-on experiences with various animals. Some day trips might include destinations like Gorman Nature Center, the Ohio Bird Sanctuary, the Cleveland or Columbus Zoo, an aquarium, Safari Adventures Animal park, and more. This unique camp will allow the campers to gain age-appropriate educational and interactive experiences with various animals throughout the week.

Myths & Mysteries (ages 12-15) - Campers should come prepared to investigate! Can lightning strike the same place twice? Do earthworms regenerate when cut in half? They will spend the week debunking or proving common myths, solving puzzles, and investigating the "why!" Their week will culminate with an exciting trip to test their puzzle-solving skills in an escape room.

Nuhop News (ages 13-16) - At Nuhop News, campers have the opportunity to learn more about what it takes to be creative in the visual and digital world, all while still being in the beautiful setting of Nuhop! Learn about video, photography, and more as we spend time at Nuhop and the surrounding area. Campers will get to put these skills to use and digitally record the week at Nuhop through a social media takeover!

Leadership Camp (ages 14-18) - *Leadership Camp is an invitation-only program based on staff recommendations. Leadership Camp is designed for return campers who are interested in developing increased leadership and learning about their leadership styles. Leadership skills, team-building activities, building on communication, collaboration, and group skills are the focus of leadership camp. Campers are given a chance to practice these skills in a safe environment while learning a variety of games and activities. During the week, these future leaders get the opportunity to learn how to transfer these skills to their everyday lives.

Wilderness Survival Camp (ages 11-14) - Does building and living in a shelter, cooking all your meals over a fire, and being one with nature sound exciting to you? If so, then Wilderness Survival Camp was designed for you. Wilderness Survival is our most rustic camp. Campers spend a week in the woods learning shelter-building and survival skills, fire-building skills, and how to cook over an open fire. The highlight of Wilderness Survival camp is a slow-cooked, pit-fired poultry dinner on the last night.

Haunted Ohio Camp (ages 12-15) - Ohio is rich with urban legends, which makes it a favorite place for those seeking to learn more about history and folklore as well as hauntings. On this trip, campers will investigate some places that claim to be haunted, learn more about some of the urban legends, and get to check out some weird stuff in Ohio! The campers will potentially get to investigate the Ohio State Reformatory, Bissman Building, and various other haunted locations in Ohio while they travel around, staying at various state parks. The capstone part of the trip will be a ghost tour or paranormal investigation at a location in Ohio that is known to be haunted!

ACTIVITIES (cont'd):

Lake Erie Camp (ages 12-14) - The Lake Erie Islands are a chain of archipelagic islands in Lake Erie and there is just something about visiting the Lake Erie Islands that just puts a smile on your face. The Lake Erie Islands trip camp is designed to take in the sights of Put-In-Bay (Middle Bass Island) and/or Kelleys Island. Campers will have an opportunity to swim in the lake, kayak, and bicycle around the gorgeous scenery. Highlights for the week include but aren't limited to seeing the glacial grooves on Kelleys Island, visiting Perry's monument and explore the Seneca Caverns.

Aqua Camp (ages 14-18) - Aqua camp is designed for the veteran camper that is looking for a new adventure. Campers will spend their week in Ohio, PA visiting natural water slides, seeing beautiful views, and finishing up the week with a white water rafting trip! Campers will work together on this rafting trip and practice growing their communication skills.

Caves & Climbing Camp (ages 14-18) - Caves and Climbing camp is for someone who enjoys adventure. Hiking, checking out some of Ohio's beautiful caves, rock-climbing and rappelling are some of the things you might do on this trip. Enjoy some of the most beautiful spots in the Midwest on this trip, and channel your inner Indiana Jones.

Park Hopping Ohio Camp (ages 13-16) - Campers will spend 11 days traveling across the great state of Ohio. Hopping from state park to state park, campers will get to visit sights such as Cuyahoga Valley National park, Holden Arboretum, explore Ohio's historic canals, and much much more! Campers will spend 2-3 nights at each location of their journey before returning to Nuhop's property.

Park Hopping Regional Camp (ages 14-18) - Campers will spend 11 days traveling through different states located regionally to Ohio. Campers will travel to Mammoth Cave, the Smoky Mountains, Congaree, and Shenandoah National Parks. They will get to explore the nature of each park as well as enjoy local attractions.

Expedition Camp (ages 18-29) - Expedition camp is designed for our tenured "Nuhoppers" over the age of 18 that still want an awesome Nuhop summer experience. The "Exped" week is grounded in the core of our off-campus trip based programs. Our goal continues to be the encouragement of positive social and emotional experiences for our seasoned campers. Each Expedition program is built on the needs and interests of the young adults who apply. Recent Expedition tribes have stayed at Pymatuning State Park (PA), Caesar Creek State park (OH), Alum Creek State Park (OH), and Sleeping Bear Dunes (MI). Groups have toured the Columbus & Toledo Zoos, fed animals at a nature preserve, watched the fantastic outdoor drama "Tecumseh", investigated local museums, swam in nearby lakes, and done many other fun activities while spending time with their peers!

Life Skills Camp (ages 18-29) - Life Skills camp is designed for the tenured Nuhopper that is looking to continue learning and growing their independent skills. Our goal will continue to be the social and emotional growth of campers, while they work and play together with their peers. The week will be based at camp with day trips into the community that focus on daily living skills such as budgeting, grocery shopping, and food preparation. They will plan out their week as a group by researching activities and making compromises. Campers will work together with guidance from their counselors to develop transferable skills to help them in their everyday lives!

CAMPERSHIPS: Yes

APPLICATION DEADLINE: Applications are accepted until places are filled. By applying early, applicants are more likely to receive their first choice of program. Please note that campers without a deposit or letter of authorization will not be placed. A \$450 deposit needs to be mailed in upon submitting your online application.

MAKE INQUIRIES TO: Camp Nuhop, Inc.
404 Hillcrest Drive
Ashland, OH 44805
(419) 938-7151 – Camp Office
info@nuhop.org

www.nuhop.org

MUSCULAR DYSTROPHY ASSOCIATION SUMMER CAMP

**Bradford Woods
5040 State Road 67 North
Martinsville, IN 46151**

Residential Camp

- CLIENTELE: Diagnosed with a type of neuromuscular disease covered by MDA's program
- AGE RANGE: 8 through 17 years of age
- SESSIONS: June 30-July 5
- APPLICATION DEADLINE: May 19, 2024
- ACTIVITIES: Gets kids outdoors through programs that educate and expose youth to adventure and nature while helping them discover who they are and what they can achieve. All camp experiences build character, leadership, self-reliance and a love for nature- all amidst the fun of camp fires, canoeing, archery, talent shows, and meaningful relationships.
- OTHER INFORMATION: All campers must be a member of MDA to participate in MDA Summer Camp. For your child to be considered, MDA must receive a completed application no later than six (6) weeks prior to the start of the camp session.
- MAKE INQUIRIES TO: camp@mdausa.org
www.mda.org/summer-camp

MUSCULAR DYSTROPHY ASSOCIATION SUMMER CAMP

**Recreation Unlimited
7700 Piper Road
Ashley, OH 43003**

Residential Camp

- CLIENTELE:** Diagnosed with a type of neuromuscular disease covered by MDA's program
- AGE RANGE:** 8 through 17 years of age
- SESSIONS:** June 9-14
- APPLICATION DEADLINE:** April 28, 2023
- ACTIVITIES:** Gets kids outdoors through programs that educate and expose youth to adventure and nature while helping them discover who they are and what they can achieve. All camp experiences build character, leadership, self-reliance and a love for nature- all amidst the fun of camp fires, canoeing, archery, talent shows, and meaningful relationships.
- OTHER INFORMATION:** All campers must be a member of MDA to participate in MDA Summer Camp. For your child to be considered, MDA must receive a completed application no later than eight (8) weeks prior to the start of the camp session.
- MAKE INQUIRIES TO:** camp@mdausa.org
www.mda.org/summer-camp

PRADER-WILLI SYNDROME SUMMER RESIDENTIAL CAMP

**Recreation Unlimited
7700 Piper Road
Ashley, OH 43003**

Residential Camp

CLIENTELE: Prader-Willi syndrome

AGE RANGE: Adults 23 and up

SESSIONS: July 1-5

ACTIVITIES: Full schedule of activities, lodging, meals and snacks, counselors, program leaders and nurses

OTHER INFORMATION: Check-in is Monday from 10:00-11:00 a.m. and check-out is Friday from 10:00-11:00 a.m. Please email info@recreationunlimited.org to review the funding criteria for this camp option.

MAKE INQUIRIES TO: Recreation Unlimited
7700 Piper Road
Ashley, OH 43003
(740) 548-7006
(740) 747-2640 or (740) 747-3139
info@recreationunlimited.org
www.recreationunlimited.org

RECREATION UNLIMITED

7700 Piper Road
Ashley, OH 43003

Residential Camp

- CLIENTELE: Developmental and/or physical disabilities
- AGE RANGE: 8 years of age and up
- SESSIONS: Residential 1: June 17-21 - Adults with Developmental and/or Physical Disabilities (ages 23 & up)
Residential 2: June 25-28 - Adults with Developmental and/or Physical Disabilities (ages 23 & up)
Residential 3: July 1-5 - Adults with Developmental and/or Physical Disabilities (ages 23 & up)
Residential 4: July 8-12 - Youth with Developmental and/or Physical Disabilities (ages 8-22)
Residential 5: July 15-19 - Youth with Developmental and/or Physical Disabilities (ages 8-22)
Residential 6: July 22-26 - Youth and Young Adults with Developmental and/or Physical Disabilities (ages 8-35)
Residential 7: July 29-August 2 - Adults with Developmental and/or Physical Disabilities (ages 23 & up)
- FEES: Please call or [email](#) for pricing and information regarding specific amp and program activity.
- APPLICATION DEADLINE: June 1, 2024
- ACTIVITIES: You will enjoy a host of indoor and outdoor recreational activities and social programs such as campfires, karaoke and dances.
- OTHER INFORMATION: Check-in Monday 10:00 - 11:30 a.m. with check-out Friday 10:00 - 11:00 a.m. Recreation Unlimited will be using an online process to register for camps. If you prefer to fill out and mail in a paper registration and application, a one-time, annual registration fee of \$45 will be required. For a paper registration and application, contact mhiggins@recreationunlimited.org.
- MAKE INQUIRIES TO: Recreation Unlimited
7700 Piper Road
Ashley, OH 43003
(740) 548-7006
(740) 747-2640 or (740) 747-3139 - FAX
mhiggins@recreationunlimited.org (Michelle Higgins - Sr. Billing & Intake Coordinator)
nhutton@recreationunlimited.org (Natalie Hutton - Camps Director)
www.recreationunlimited.org

RECREATION UNLIMITED WINTER RESIDENTIAL CAMP

7700 Piper Road
Ashley, OH 43003

Residential Camp

CLIENTELE: Mild to moderate developmental and/or physical disabilities

AGE RANGE: 18 years of age & up

SESSIONS: December 16-20

FEES: Please call or [email](#) for pricing and information regarding specific amp and program activity.

ACTIVITIES: Full schedule of activities, lodging, meals and snacks, counselors, program leaders and nurses

OTHER INFORMATION: Check-in is Monday from 10:00 - 11:30 a.m. and check-out is Friday 10:00 - 11:00 a.m. If you prefer to fill out and mail in a paper registration and application, a one-time, annual registration fee of \$45 will be required. For a paper registration and application, contact mhiggins@recreationunlimited.org.

MAKE INQUIRIES TO: Recreation Unlimited
7700 Piper Road
Ashley, OH 43003
(740) 548-7006
(740) 747-2640 or (740) 747-3139
info@recreationunlimited.org
www.recreationunlimited.org

STEPPING STONES STAYCATIONS

Allyn Campus
1414 Lake Allyn Road
Batavia, OH 45103

Residential Camp

CLIENTELE: Autism, intellectual disability, deafness, hearing impairment, multiple disabilities, orthopedic impairment, other health impairment, specific learning disability, speech or language impairment, traumatic brain injury

AGE RANGE: 16 through 65 years of age

SESSIONS: Session 1: Creating Camp Memories - June 2-6 (\$920)
Session 2: Game On - June 9-13 (\$920)
Session 3: Where the Stars Are - June 16-20 (\$920)
Session 4: Stars, Stripes and Camp - June 23-27 (\$920)
Session 5: Create Your Magic - July 7-11 (\$972)
Session 6: Luau Week - July 14-18 (\$972)
Session 7: Explorer Week - July 21-25 (\$972)
Session 8: Camp Spirit - July 28-August 1 (\$972)

CAMPERSHIPS: Yes

ACTIVITIES: Accessible hiking trails, adaptive archery range, outdoor swimming pool, miniature golf course, sheltered outdoor program spaces, multiple lakes for boating and fishing

OTHER INFORMATION: Check-in times will be staggered starting at 1:00 p.m. on Sunday. Pick-up times will be staggered starting at 4:00 p.m. on Thursday. No 1:1s available.

MAKE INQUIRIES TO: Jeannie Ludwig
Stepping Stones Center
5650 Given Road
Cincinnati, OH 45243
(513) 965-5108
Fax: (877) 913-1293 (photos cannot be faxed)
jeannie.ludwig@steppingstonesohio.org
www.steppingstonesohio.org

YMCA CAMP KERN

5291 State Route 350
Oregonia, OH 45054

Residential Camp

CLIENTELE: Autism, deafness, hearing impairment, orthopedic impairment, other health impairment, specific learning disability, speech or language impairment, visual impairment including blindness and seizure disorders

SESSIONS:

Star Wars

The First Order is back, and Camp Kern is in imminent danger! It is up to YOU to help us get rid of them! Join us for a full week of Jedi Training at the Jedi Academy of Camp Kern. Throughout the week, our Padawans will learn the ways of the Force, the art of the lightsaber, and how to calm their mind and trust their instincts. All these skills will be vital to help save our galaxy. At the end of the week, all Padawan campers will appear in front of the Jedi council to see if they have what it takes to call yourself a Jedi!

Age: 9-12

Session 1: June 2-7

Session 6: July 7-12

Cost: \$775

Star Wars Teens

“Somehow.... Palpatine Returned.”

New for 2024! Your favorite fully-immersive camps now have a specially-designed program just for teens aged 13-16! Travel the galaxy, meet your favorite Jedi, chase your least favorite Sith nemeses, and marvel at intergalactic mysteries. This program will include opportunities for building leadership skills and there are no prerequisites for attendance.

Age: 13-16

Session 1: June 2-7

Session 6: July 7-12

Cost: \$775

Harry Potter

Wingardium Leviosa!

From the moment you arrive, until you check out on Saturday, you will cease to be a Muggle, and will enter the Hogwarts School of Witchcraft and Wizardry as a student. Do you have what it takes to learn Potions? Are you ready for daily Quidditch practice? Do you know your spell book forwards and back? Tons of activity, imagination, and fun will fill this week. Come prepared to immerse yourself in the world of Harry Potter, while enjoying all that Camp Kern has to offer!

Age: 9-12

Session 2: June 9-14

Session 7: July 14-19

Cost: \$775

SESSIONS (continued):

Harry Potter Prefects/Teens

Are you ready to take the next step in your Hogwarts adventure? Take on the role of a Hogwarts Prefect and prepare to lead your House against a variety of challenges, from both inside and outside the walls of Hogwarts! Designed for our older Hogwarts students looking for the next challenge in their wizarding education. This program will include opportunities for building leadership skills and there are no prerequisites for attendance.

Age: 13-16

Session 2: June 9-14

Session 7: July 14-19

Cost: \$775

Dungeons & Dragons

Come along for a Medieval Camp Kern adventure like no other. Your fantasies will come to life as you build your character and work through the trials and tribulations that come in your path. A mysterious force is taking over, only the best can help defend Camp Kern and defeat whatever means it harm. Could that be you? There's only one way to find out!

Age: 9-12

Session 4: June 23-28

Session 9: July 28-August 2

Cost: \$775

Dungeons & Dragons Teens

New for 2024! More goblins, more dungeons, more dragons! This newly-designed Dungeons & Dragons questline is geared toward our older, wizened adventurers. Grab your dice, ready your wizard staff and pack your mimic chest (if you can find it) and head to Ye Olde' Camp Kern. This program will include opportunities for building leadership skills and there are no prerequisites for attendance.

Age: 13-16

Session 4: June 23-28

Session 9: July 28-August 2

Cost: \$775

Percy Jackson

Have you always been drawn to ancient Greek culture? Do you want to grow up to be a hero? Then a week at Camp Half Blood is perfect for you! Spend a week training your body and mind to be the best demigod tis modern world has seen! Daily quests, monsters to vanquish and a god-written destiny await all who answer the call of heroes!

Age: 9-12

Session 3: June 16-21

Session 8: July 21-26

Cost: \$775

Percy Jackson Teens

"With Great Power... Comes Great Need to Take a Nap."

These adventures are not just for any half-blood, only the best can be tested by the next level or destiny, puzzles and monsters. Pack up your swords and gear because your next big quest is calling your name. It's time to answer the call.

Age: 13-16

Session 3: June 16-21

Session 8: July 21-26

Cost: 775

SESSIONS (continued): Ranger's Apprentice
Earn Your Oak Leaf
Immerse yourself in the world of [Ranger's Apprentice!](#) This is a fully themed week where you will be instructed on horseback riding, trail riding, archery, tracking, survival skills, stealth and Ranger missions. If you love Ranger's Apprentice, this officially-sanctioned camp will test your strength, loyalty and commitment. Defend the kingdom from Morgarath's Wargals, Skandian Raiders and the fearsome Temujai warriors. Come as an Apprentice. Earn your Silver Oak Leaf. Become a Ranger.
Session 5: June 30-July 5
Cost: \$775

FEES: Fees include one week of camp, 3 meals each day, two daily snacks, all program supplies and a cabin photo

CAMPERSHIPS: Financial assistance is available

APPLICATION DEADLINE: Ongoing

ACTIVITIES: Canoeing, digital photography, archery, tango tower, BBs, drama, nature, radio, arts & crafts, sports, swimming, disc golf, rock climbing and much more

OTHER INFORMATION: Camp program is not specifically designed for campers with disabilities, but can accommodate to serve camper needs. Please call for more information.

MAKE INQUIRIES TO: YMCA Camp Kern
5291 State Route 350
Oregonia, OH 45054
(513) 932-3756
(513) 932-8607 - FAX
ldeters@daytonymca.org
www.campkern.org

Day Camps, Day Programs & Respite Weekends



ABILITIES FIRST

4710 Timber Trail Drive
Middletown, OH 45044

Day Program

CLIENTELE: The Summertime Therapy program is open to children with special needs. All groups are designed and led by licensed therapy staff and encourage social interaction, cooperation and turn taking with peers, while providing therapy input specific to the needs of the children.

AGE RANGE: Varies - see individual programs

SESSIONS: May 20-August 9

Summer Fun for Children with Differing Abilities: (PreK-Grade 2)

May 28-August 1

A fun and structured experience for children diagnosed with Autism Spectrum Disorder and differing abilities. The class provides continuity of routines for children already attending a school program during the school year and an initial introduction to a structured school environment for those not currently enrolled in a program. The focus will be on maintaining and developing constructive and imaginary play, following a visual schedule, addressing sensory needs, peer interaction, social skills, positive behaviors, communication and motor skills, all while enjoying many fun summertime activities. The teachers will incorporate their knowledge of therapeutic and behavioral learning in the natural environment.

Time: Tuesday-Thursday
9:00 a.m. - 2:00 p.m.

Staff: 2-3 teachers and assistant teachers per classroom, teachers will assess skills and place student in appropriate class

Cost: \$1,200
(vouchers available from your County Board of DD for those who qualify, scholarships available for those who not qualify, for a max out of pocket of \$550 per student, voucher or payment required to be placed on roster)

Individual Therapy: (ages birth to 22 years)

Individual Physical Therapy, Occupational Therapy & Speech Therapy are available. Therapeutic activities will be specific to the child's needs and family goals.

When: Individually scheduled

Staff: Physical, Occupational Therapists and Speech Language Pathologists

Early Childhood Learning Center: (ages 6 weeks to 10 years)

Year round Abilities First, Early Childhood Learning Center (ECLC) enrolls children who are developing typically and those who have differing abilities. Children learn alongside one another and develop caring relationships with teachers, staff and peers. Serving children from 6 weeks old through 10 years, the ECLC has a Five-Star Step Up to Quality Rating, has onsite therapy and special education supports and participates in Success by Six. Summer activities include but not limited to: cool critters reptiles, water days and much more! ****Please call for availability****

SESSIONS (continued):

GROUP THERAPY (group placement to be determined at time of evaluation)

Language, Learn & Play Group: (ages 2-4 years)

This group provides play-based experiences for children who present with language delays. The group will include therapeutic experiences which foster socialization, communication skills, and openness to sensory exploration.

When: Day & Time TBD

Staff: Speech Language Pathologist and potentially Occupational Therapist

School Readiness Group: (ages 4-7 years)

This therapeutic group is for children who demonstrate difficulty with speech-language skills and other skills needed for academic success in kindergarten and first grade. The group also creates learning opportunities for children to develop classroom social skills and peer relationships.

When: Day & Time TBD

Staff: Speech Language Pathologist and potentially Occupational Therapist

PEDIATRIC THERAPIES

Kids Connect: (ages 6-12 years)

These social groups are best suited for children who are verbal and have challenges with their social communication skills. We will be using the Social Thinking Curriculum. The group will provide children the opportunity to learn how to interact with peers. Fun activities will be designed to target flexible thinking, expected and unexpected behaviors, following the group plan, and the size of the problem.

When: Group placement to be determined at time of evaluation

Staff: Speech Language Pathologists

Teens Connect: (ages 13 and up)

This social group is for teens who are verbal. We utilize the Social Thinking curriculum in planning fun activities which target team work, executive function, increased effective communication interaction.

When: Group placement to be determined at time of evaluation

Staff: Speech Language Pathologists

OT Club:

This group focuses on individual occupational therapy goals in a social group with peers who are similar in age! Each participant will have 1:1 time with an OT to work toward his/her goals as well as fun structured engaging activities as a group.

When: Group placement to be determined at time of evaluation

Staff: Occupational Therapists

GROUPS FOR TEENS & YOUNG ADULTS

Friends in STEP: (ages 13 & up)

(Social Thinking, Executive function, Physical fitness)

Friends in STEP is designed to increased independence with activities of daily living, social communication, fitness, nutrition and problem solving. The group will work on organization and planning by incorporating community outings and utilization of these skills in everyday situations. An evaluation is needed for appropriate placement. Call for available slots.

Time: Wednesday 4:00-5:30 p.m.

Staff: Occupational Therapist & Speech Language Pathologist

SESSIONS (continued):

NEW 2024

Mindfulness YOGA: Adaptive Yoga for Kids of all abilities

Does your child need to work on...

- physical or emotional balance?
- regulation?
- moving their bodies more?
- body awareness?
- coordination?

Here at Abilities First we can provide private 1:1 yoga lessons or group yoga lessons to overcome these difficulties. Combining a holistic background of yoga training with a medical background of occupational therapy will help the practitioner meet your child where they are and achieve what they and you want from this experience! All activities can be adapted to your child's needs and abilities.

Cost: \$450 for Intro session (30 min) + 10 sessions (45 minute each)

Staff: Chloe Ruggiero OT, certified yoga instructor

****This program is not covered by insurance. Vouchers available from your County Board of DD for those who qualify.****

Camp CONNECT:

Camp CONNECT is a 5-day camp for pre-teen/teenagers with developmental disabilities to have a fun, enriching week that builds skills for activities of daily living, community involvement and meaningful social interactions with peers. For this pilot first year of Camp Connect, spaces are limited. ****Enrollment into the Camp will be determined by an evaluating therapist.**

Dates: To be determined

Monday - Friday 9:00 a.m. - 3:00 p.m.

Cost: \$750 (valued at \$1,500)

Staff: Team of our pediatric therapists and trained volunteers

****The program is not covered by insurance. Vouchers available from your county Board of DD for those who qualify.****

APPLICATION DEADLINE: May 10, 2024

OTHER INFORMATION: Every child will be evaluated for appropriate placement. Group placement will be determined based on child's assessment. Group availability will be dependent upon the number of registrations received. Most therapy programs are covered by insurance. Please call your insurance company for more information.

MAKE INQUIRIES TO: Abilities First
4710 Timber Trail Drive
Middletown, OH 45044
(800) 378-8612
(513) 423-9496
(513) 727-3806 - FAX
info@abilitiesfirst.org
www.abilitiesfirst.org

AKRON ROTARY CAMP

4460 Rex Lake Drive
Akron, OH 44319

Day Camp

- CLIENTELE: Autism, intellectual disability, deaf-blindness, deafness, emotional disturbance, hearing impairment, multiple disabilities, orthopedic impairment, other health impairment, specific learning disability, speech or language impairment, traumatic brain injury, visual impairment including blindness
- AGE RANGE: 6 through 21 years of age
- SESSIONS: Week 1: June 3-7
Week 2: June 10-14
Week 3: June 24-28
Week 4: July 8-12
Week 5: July 15-19
Week 6: July 22-26
Week 7: August 5-9
- FEES: \$435 per week
- CAMPERSHIPS: Yes
- ACTIVITIES: Crafts, games, nature activities, songs and so much more! Each day, weather permitting, campers will also have the opportunity to explore the excitement of Rex Lake, through activities including swimming, canoeing and other water games.
- OTHER INFORMATION: Campers are organized into cabin groups according to age and ability.
- MAKE INQUIRIES TO: Akron Rotary Camp
4460 Rex Lake Drive
Akron, OH 44319
(330) 644-4512
(330) 644-1013 - FAX
kyleb@akronymca.org
www.gotcamp.org

CAMP CHEERFUL DAY CAMP

**Achievement Centers for Children
15000 Cheerful Lane
Strongsville, OH 44136**

Day Camp

- CLIENTELE:** Children with and without special needs. Disabilities may include: autism, intellectual disability, deaf-blindness, deafness, hearing impairment, multiple disabilities, orthopedic impairment, other health impairment, specific learning disability, speech or language impairment, traumatic brain injury and visual impairment including blindness
- AGE RANGE:** 5 through 22 years of age
- SESSIONS:** Session 1: June 10-14
Session 2: June 17-21
Session 3: June 24-28
Session 4: July 1-3 (three-day week in observance of July 4th Holiday)
Session 5: July 8-12
Session 6: July 15-19
Session 7: July 22-26
Session 8: July 29-August 1
Session 9: August 5-9
- Camp Hours: Monday through Friday, 8:30 a.m. - 4:30 p.m.
- FEES:** Fee for Standard Day Camp - \$500
Fee for Session 4 Day Camp - \$300
Family self-pay portion is \$86.50
- CAMPERSHIPS:** IO, Level 1 and SELF Waivers are accepted
- APPLICATION DEADLINE:** June 1, 2024
- ACTIVITIES:** Hiking, swimming, fishing, arts and crafts, nature study activities, games, campfire activities, music, sports, visits to our horse barn, and memories that will last a lifetime!
- OTHER INFORMATION:** Campers provide their own brown bag lunches. Camp Cheerful provides a small snack in the afternoon (popsicles, fruit, a bag of chips, etc.). We do not provide transportation. 1:3 counselor to camper ratio
- MAKE INQUIRIES TO:** Achievement Centers for Children
15000 Cheerful Lane
Strongsville, OH 44136
(440) 238-6200 ext. 224
mercedes.zeigler@achievementctrs.org
www.achievementcenters.org

CAMP CHEERFUL SENSATIONAL ESY PROGRAM

15000 Cheerful Lane
Strongsville, OH 44136

Day Camp

CLIENTELE: Variety of moderate disabilities

AGE RANGE: 5 through 22 years of age

SESSIONS: Session 1: June 10-27 (high school & middle school students)
Session 2: July 8-19 (high school and elementary school students)
Session 3: July 22-August 2 (elementary and middle school students)

Camp Hours: Monday through Friday, 9:00 a.m. - 3:00 p.m.

FEES: \$1,800 per week (districts must register and pay for their students)

APPLICATION DEADLINE: June 1, 2024

ACTIVITIES: Campers work daily with the Intervention Specialist, Occupational Therapist and Speech Language Pathologist per the IEP.

OTHER INFORMATION: Campers provide their own brown bag lunches. Camp Cheerful provides a small snack in the afternoon (popsicles, fruit, a bag of chips, etc.). We do not provide transportation. 1:2 counselor/aide to student ratio: 1:1 services are not available for this program unless provided by the district.

MAKE INQUIRIES TO: Achievement Centers for Children
15000 Cheerful Lane
Strongsville, OH 44136
(440) 238-6200 ext. 224
mercedes.zeigler@achievementctrs.org
www.achievementcenters.org

CAMP CHRISTOPHER SUMMER DAY CAMP

1930 North Hametown Road
Akron, OH 44333

Day Camp

- CLIENTELE: Intellectual and developmental disabilities, who are deaf or hard of hearing, blind or visually impaired, or have mental illness
- AGE RANGE: 5 through 21 years of age
- SESSIONS:
- Session 1 - June 10-14 - Time Warp Week:
Travel in time to explore the past and future. Group themes will be centered on different periods of time, from the dinosaurs, to the groovy 60's, all the way to the future! Get your time machine ready for Time Warp Week!
- Session 2 - June 17 - 21 - Fantasy Week:
Myths, Legends and Fairy Tales, Oh My! At Camp Christopher, we have many traditions and legends that carry on from generation to generation. Campers will be celebrating our favorite fantasy stories from books, movies television shows, and more!
- Session 3 - June 24-28 - Entertainment Week:
Lights, Camera, Action! Enjoy a week of camp infused with your favorite songs, movies and television shows. Camp activities will be inspired by popular movies and television shows of today and the past. Get ready for stardom!
- Session 4 - July 8-12 - Holiday Week
Don't you wish every day was a holiday? Well, for this week at camp, it will be! Whether you are looking to celebrate Christmas in July, or want the 4th of July to never end, this is the week for you.
- Session 5 - July 15-19 - Heroes Week
If you have ever dreamed of being a hero, this is your week! We are celebrating heroes of all kind, from doctors, to teachers, superheroes, and more! Come to Camp and discover which hero you get to celebrate all week long!
- Session 6 - July 22-26 - Around the World Week
Pack your bags because camp will be anywhere BUT Bath Ohio..., Well, in spirit that is. This week, we will explore and celebrate different parts of the world.
- Session 7 - July 29-August 2 - Christopher Spirit Week
Enjoy a week filled with spirit, the Christopher Spirit! Cabin/group themes and group programming will be centered on camp history, legends and many other topics that make up the Christopher Spirit. Pack your favorite camp gear and get ready for a spirit filled week.
- Session 8 - August 5-9 - Out of this World Week
Channel your sense of adventure and enjoy a week of broadening your horizons at camp. Together we will explore areas that are "Out of this World!" Whether it's the undiscovered depths of the ocean, or traveling all the way to Neptune, join us for the final week of day camp this summer!

FEES: \$325 (including deposit), non-refundable deposit of \$50

CAMPERSHIPS: Yes

APPLICATION DEADLINE: Three weeks prior to attendance or when weeks fill up

SPONSOR(S): Program is operated by Catholic Charities of Summit County

OTHER INFORMATION: Lunch is provided. If you would like to pack a lunch for your camper that is also acceptable. Times are 9:00 a.m. - 4:00 p.m.

MAKE INQUIRIES TO: Camp Christopher
812 Biruta Street
Akron, OH 44307
(800) 296-CAMP
(330) 376-CAMP
<http://ccdogle.org/program/sumfun>

CAMP DISCOVERY

2900 Glengarry Drive
Kettering, OH 45420

Day Camp

- CLIENTELE: Autism, intellectual disability, deaf-blindness, deafness, emotional disturbance, hearing impairment, multiple disabilities, orthopedic impairment, other health impairment, speech or language impairment, traumatic brain injury and visual impairment including blindness
- AGE RANGE: 6 through 21 years of age
- SESSIONS: Camp Week 1 - June 3-7
Camp Week 2 - June 10-14
Camp Week 3 - June 17-21
Camp Week 4 - June 24-28
Camp Week 5 - July 8-12
Camp Week 6 - July 15-19
Camp Week 7 - July 22-26
Camp Week 8 - July 29-August 2
- FEES: \$205 for resident
\$257 for non-resident
- APPLICATION DEADLINE: Ongoing, assessment meeting before camp
- ACTIVITIES: On-site adventures, swimming at the Adventure Reef Water Park, games, crafts and more!
- MORE INFORMATION: **New for 2024**, participants will register for the Camp Discovery Assessment, and have the ability to register in person, over the phone or online. Once you have registered, a staff member will contact you to schedule the assessment. This assessment will determine compatibility for Camp Discovery and will take place sometime from March to May. Once the assessment is completed, you will be directed to enroll your child in the weeks of camp that you requested. Our staff to camper ratio is 1:4, ensuring each camper receives the attention and support they need. Extended care is not available for Camp Discovery.
- MAKE INQUIRIES TO: Camp Discovery
Kettering Parks, Recreation and Cultural Arts Department
2900 Glengarry Drive
Kettering, OH 45420
(937) 296-2587
www.playkettering.org

CLOVERNOOK CENTER SUMMER CAMP

Clovernook Procter Center
1574 Claretta Drive
Cincinnati, OH 45231

Day Camp

- CLIENTELE: Blind & visually impaired
- AGE RANGE: 6 through 21 years of age
- SESSIONS: June 10-14 - Socialization and Leisure (Respite) Day Camp:
Incoming Kindergarten-12th grade
Under the supervision of certified teachers of students with visual impairments (TVIs) and orientation and mobility (COMS), as well as other teachers and therapists, this camp is designed with a multi-sensory approach for children with visual impairments and additional disabilities who need a very structured camp experience with one-on-one high-level support needs.
- July 8-12 - Orientation and Mobility (O&M) Day Camp:
Incoming 3rd-12th grade
Under the supervision of a certified orientation and mobility specialist this camp will help children with visual impairments learn how to navigate their environment safely, effectively and efficiently.
- July 15-19 - Introduction to Musical Theatre Day Camp:
Incoming 1st-8th grade
This camp will provide an introduction to the many facets of musical theatre for elementary and middle school age students through singing, dancing and acting with songs from Disney movies. Arts and crafts will be incorporated into this camp experience and there will be a performance for families at 11:00 a.m. on Friday, July 19.
- July 8-19 - Arts & Culture Day Camp:
Incoming Kindergarten-12th grade
This camp will explore various Performing, Visual/Tactile and Culinary Arts.
- FEES: \$25 - \$50
- APPLICATION DEADLINE: First-come, first-serve
- MORE INFORMATION: Other possible locations to be determined. Camp will run Monday-Friday. Students will need to bring a water bottle each day of camp. Snacks will be provided. Drop-off can occur as early as 8:45 a.m. and pickup will be promptly at 12:00 p.m.
- MAKE INQUIRIES TO: Clovernook Center for the Blind & Visually Impaired
1574 Claretta Drive
Cincinnati, OH 45231
Dr. Kelly Lusk
(615) 305-7835 (call or text)
klusk@clovernook.org
<https://clovernook.org/youth-services/summer-camp-series/>

EVERY DAY MAGIC CAMP

Virtual Camp

CLIENTELE:	Children with disabilities
AGE RANGE:	9 through 18 years of age
SESSIONS:	Camp 1: June 3-28 Camp 2: July 8-August 2
FEES:	Free
SPONSOR(S):	UAB Arts in Medicine & in the Department of Occupational Therapy in the UAB School of Health Professions
ACTIVITIES:	In this four-week magic camp, children will learn tricks developed by illusionist, Kevin Spencer & his HOCUS FOCUS program.
MORE INFORMATION:	Camp will be 2-3 hours each week and children will learn 3 tricks a week. Monday, Wednesday and Friday afternoons. The end of each camp will end in a streamed performance for friends and family!
MAKE INQUIRIES TO:	artsinmedicine@uab.edu

FACETS THEATRE

Theatre, Dance, and Performance Technology Program
Fitz Hall, Room 475
300 College Park
Dayton, OH 45469

Day Program

CLIENTELE: Neurotypical or neurodivergent

AGE RANGE: 8 through adult

SESSIONS: May 28-30
June 4-7
June 11-14

FEES: Free

SPONSOR(S): UAB Arts in Medicine & in the Department of Occupational Therapy in the UAB School of Health Professions

ACTIVITIES: The camps will be offered by UD Theatre, Dance and Performance Technology faculty and staff, in addition to instructors with expertise in teaching inclusive neurodiverse theatre. Katie O'Leary and Michelle Hayford, the long-time directors of Brighter Connections Theatre, will be offering the Sketch Comedy + Improv camps. Puppet Camps will be offered by UD theatre faculty Jeronme Yorke and Chloe Cappuccilli. Theatre Design camp will be offered by UD theatre faculty Chloe Cappuccilli and Rachel Robinson. Inclusive Dance camp will be offered by UD theatre faculty Kisa Li. Technical theatre support will be provided by our Technical Director Eric Moore and UD students will be supporting and facilitating the camp experience, too. The camps and the public performance June 14 will take place in our new Experimental Theatre in the Roger Glass Center for the Arts.

MORE INFORMATION: No previous theatre or dance experience is necessary for any of the camps. Each camp is a stand-alone camp, but if you participate in more than one camp, of course, you will be able to build on your skills learned in the previous camp(s).

MAKE INQUIRIES TO: Theatre, Dance and Performance Technology Program
(937) 229-3950
dorseyt2@udayton.edu

GOOD WORKS FARM SUMMER DAY CAMP

1566 Roxanna New Burlington Road
Waynesville, OH 45068

Day Camp

CLIENTELE:	Developmental disability (Autism, Down Syndrome, intellectual delay, Fragile X, etc.)
AGE RANGE:	Ages 5 and older
SESSIONS:	June 10-14 9:00 a.m. - 2:00 p.m.
FEES:	\$334.40
CAMPERSHIP:	Campership funds are available for self-pay campers to cover up to half your registration fee
ACTIVITIES:	Animals, art, games, gardening, music, woodworking
OTHER INFORMATION:	Family cap this year is \$400 per family. We accept Medicaid Waiver funding, county funding, grant funding and private pay. We rely on camp funds for the year-long improvement and development of our non-profit, and have a limited number of camp sponsorships from businesses in the community, which will be disbursed contingent upon availability.
MAKE INQUIRIES TO:	contactus@goodworksfarm.org www.goodworksfarm.org

KIDS CAMP

**Blendon Woods Metro Park Hickory Grove Shelter
4265 East Dublin Granville Road
Columbus, OH 43230**

Day Camp

CLIENTELE: Diabetes Type 1

AGE RANGE: 3 through 7 years of age

SESSIONS: June 3-7

FEES: \$100

CAMPERSHIPS: Yes

APPLICATION DEADLINE: June 1, 2024

ACTIVITIES: Outdoor games, education sessions, arts & crafts

OTHER INFORMATION: Kids Camp encourages campers to explore their potential, try different activities, build friendships and learn about diabetes. Siblings are encouraged to be involved in the day camp experience.

MAKE INQUIRIES TO: LifeCare Alliance
Anthony Myer
1699 W Mound Street
(614) 437-2914
amy@lifecarealliance.org
<https://www.lifecarealliance.org/programs/coda/camp-hamwi/about/#camp-programs>

OHIO SCHOOL FOR THE DEAF SUMMER CAMPS

Ohio School for the Deaf
500 Morse Road
Columbus, OH 43214

Day Camp

CLIENTELE: Deaf, hard of hearing or deafblind

AGE RANGE: Entering grades K-12 and live in Ohio

SESSIONS: Drivers Education:
Dates: June 3-7 & June 10-14
Cost: Free

The camp will cover 24 hours of instruction and 8 hours of in-vehicle training for under 18 years. Students with a temporary driving permit will have first priority to enroll in the camp. In the afternoons, students will meet up with tutors for instructional support. Topics will include navigating the BMV website, car finance, car insurance, car detailing and other related topics. Open to OSD students first.

HS Math Camp: (Grades 9-12)
Dates: June 3-7
Cost: \$30

An immersive and dynamic high school math camp designed to ignite the passion for mathematics in young minds. Our camp goes beyond traditional classroom learning, offering an engaging and interactive environment where students can explore the beauty and excitement of mathematics. Included will be hands-on workshops, real-world applications, team challenges and exploration of advanced topics.

K-4 Adventure Day Camp: (formerly ELC School Age)
Dates: June 3-7
Cost: \$30

This camp will collaborate with PBS and Ohio Learns to allow students to explore living things regardless of their location and explore water, soil and life cycles. From hands-on science to art projects, this camp will keep your students engaged.

K-4 Adventure Day Camp: (formerly ELC School Age)
Dates: June 10-14
Cost: \$30

This camp will collaborate with PBS and Ohio Learns to allow students to explore living things regardless of their location and explore water, soil and life cycles. From hands-on science to art projects, this camp will keep your students engaged.

SESSIONS (continued):

LEGO Robotics: (Grades 5-8)

Dates: June 10-14

Cost: \$30

Who would resist playing with LEGO? From toddler to high school, even in nursing homes, everyone loves LEGO! This camp involves some basic robotic building and coding skills, as well as mental challenges! Imagine playing with LEGO robotic for 6 hours every day for a week! The final championship competition will happen at the end of the week!

Adventure/Explorers Camp: (Grades 7-12)

Dates: June 24-28

Cost: \$30

Get ready for an awesome adventure with our Explorer's Camp! We're going on a super fun journey across Ohio to explore cool places and do exciting activities. From outdoor adventures to hands-on fun in different locations, our camp is all about making new friends, having a blast and creating memories you'll never forget. Our teachers will help us work together and enjoy the great outdoors. Join us on this amazing trip through Ohio's special spots, where the excitement never stops! Sign up now and let the adventure begin!

Sports Camp: (Grades 2-6)

Dates: June 24-28

Cost: \$30

This camp is a dynamic blend of skill-building, teamwork and most importantly, fun! Skill Development - Specialized Coaching - Friendly Competitions - Inclusive Environment. Sports Camp is perfect for students who have a passion for sports and are eager to enhance their skills in a supportive and lively environment. Whether your child is a budding athlete or simply looking to have fun with friends, this camp is the perfect summer sports adventure.

K-4 Adventure Day Camp: (formerly ELC School Age)

Dates: July 8-12

Cost: \$30

This camp will collaborate with PBS and Ohio Learns and will explore animal's features, behaviors and habitats. Campers will be able to make connections between an animal's physical characteristics and its abilities to survive.

Auto Mechanic: (Grades 9-12)

Dates: July 8-12

Cost: \$30

Get ready for a week of hands-on fun with our Spartan Auto Club Camp. This camp is perfect for high school students who are curious about cars and want to dive into the basics of automotive mechanics. From understanding engines to fixing brakes, this camp is your ticket to the world of auto repair. Included will be: hands-on learning, cool trips (museums, car shows and others!), discovering car systems, safety first, team challenges and Certificate of Awesomeness. High school students who love cars, enjoy hands-on activities and are curious about how things work under the hood. No prior experience is required - just bring your enthusiasm!

SESSIONS (continued): Anime Camp: (Grades 9-12)
Dates: July 15-19
Cost: \$30

Enjoy reading and watching anime? Want to learn how to create a costume? Participants in this camp will include learning about the Asian influence and culture in the creation of anime, watching films and shows, reading and discussing anime literature and drawing and creating anime-inspired art. We will spend time learning techniques in creating our own anime costume, participating in our own cosplay!

K-4 Adventure Day Camp: (formerly ELC School Age)
Dates: July 15-19
Cost: \$30

This camp will collaborate with PBS and Ohio Learns where everyone has skills and abilities that make them super. Through this camp, students will be able to explore those traits that make them special and learn some new ways to express those superpowers in everyday life.

Intro to ASL: (Grades 6-12)
Dates: July 22-26
Cost: \$30

Introduction to ASL Camp is perfect for students who are curious about American Sign Language, whether beginners or those with some prior exposure. This camp welcomes anyone interested in expanding their communication skills, fostering inclusivity and embracing the beauty of a language that opens doors to a vibrant and diverse community. Embark on a journey of discovering and unlock the world of American Sign Language! Our camp is not just about learning a new language; it's about breaking down barriers, fostering understanding and celebrating the richness of Deaf culture.

Math Camp: (Grades K-5)
Dates: July 22-26
Cost: \$30

A week of math working with basic math and problem solving skills to strengthen your foundation for success next year. The activities will create a valuable time not only for practicing concepts but also to be better in social abilities and communication skills. We will attend one field trip during the week and will do various hands-on group activities involving math in real-life application.

OTHER INFORMATION: All camp grades refer to the grade the camper will be entering in the Fall of 2024-2025.

MAKE INQUIRIES TO: Ohio School for the Deaf
500 Morse Road
Columbus, OH 43214
(614) 896-3841
osdsummercamps@osdb.oh.gov
<https://osd.ohio.gov/home>

RECREATION UNLIMITED SUMMER DAY CAMP

7700 Piper Road
Ashley, OH 43003

Day Camp

CLIENTELE: Developmental and/or physical disabilities and health concerns, as well as their siblings without disabilities

AGE RANGE: Youth 5 through 22 with and without disabilities

SESSIONS: Day Camp 1: June 24-28
Day Camp 2: July 1-5
Day Camp 3: July 8-12
Day Camp 4: July 15-19
Day Camp 5: July 22-26

Summer Day Camps are Monday through Friday, 9:00 a.m. to 4:00 p.m. You may sign up for as many weeks as you would like.

FEES: \$450 per week (may change due to camper's individualized needs)
\$35 non-refundable registration fee (online only)

Campers may qualify for scholarship assistance based on request and individual need. In addition, financial assistance from county or state agencies, or local service organizations may be available. Level One Waiver, Individual Options Waiver and SELF Waiver may also be used to pay your camp fees. Campers using a waiver to pay for camp will be responsible for a Program Fee of \$95.00. Scholarship funding for the program fee may be available.

APPLICATION DEADLINE: First come, first-served

ACTIVITIES: Swimming, fishing, canoeing, climbing, sports, archery, creekin', nature, exploration, arts and crafts, cooking, theater, campfire, dancing and more

OTHER INFORMATION: Summer Day Camps provide a full schedule of activities, lunch and snack, counselors, program leaders, on-site nursing care and a new adventure every day. If you prefer to fill out and mail in a paper registration and application, a one-time, annual registration fee of \$35/\$45 will be required. If you prefer to fill out and mail in a paper registration and application, a one-time, annual registration fee of \$45 will be required. Please contact mhiggins@recreationunlimited.org.

MAKE INQUIRIES TO: Recreation Unlimited
7700 Piper Road
Ashley, OH 43003
(740) 548-7006
(740) 747-2640
mhiggins@recreationunlimited.org (Michelle Higgins - Sr. Billing & Intake Coordinator)
nhutton@recreationunlimited.org (Natalie Hutton - Camps Director)
www.recreationunlimited.org

RECREATION UNLIMITED YEAR-ROUND RESPITE & WEEKEND CAMPS

7700 Piper Road
Ashley, OH 43003

Respite Weekend

CLIENTELE: Developmental and/or physical disabilities

AGE RANGE: 8 through 22 years of age for youth only
23 and up for adults only

SESSIONS: April 12-14 (adult only)
April 26-28 (youth only)
May 17-19 (adult only)
September 27-29 (adult only)
October 11-13 (youth only)
October 25-27 (adult only)
November 8-10 (youth only)
November 22-24 (adult only)
December 6-8 (youth only)

Respite Weekend Camps are Friday through Sunday. Camper arrival time is Friday from 5:00-6:00 p.m. Camper departure time is Sunday from 10:00-11:00 a.m. All campers must be picked up by 11:00 a.m.

FEES: \$560 per weekend (may change due to camper's individualized needs)
\$35 registration fee if done online
\$45 registration fee if paper registration

APPLICATION DEADLINE: Registrations are held on a first-come, first-served basis. You may sign up for as many weekends as you would like, but space is limited.

ACTIVITIES: Respite Weekend Camps provide a full schedule of activities, lodging, meals and snacks, counselors, program leaders, on-site nursing and a great environment for indoor and outdoor fun! Examples of program activities include swimming, fishing, canoeing, climbing, sports, archery, creekin', nature exploration, arts and crafts, cooking, theater, campfire, dancing and more!

OTHER INFORMATION: If you prefer to fill out and mail in a paper registration application is completed online, a one-time, annual registration fee of \$45 will be required. For a paper registration and application, contact mhiggins@recreationunlimited.org. Recreation Unlimited is an Individual Options Waiver, SELF Waiver, and Level One Waiver (see new billing information for Individual Options, SELF and Level One Waivers in the left hand column for the Year Round Respite Weekend Camp) provider. Please inform your service coordinator of the dates that you have registered for camp and submit a request for service prior to coming to camp so that camp fees will become part of your service plan. You will be responsible for payment of any camp that is not included on your service plan.

MAKE INQUIRES TO: Recreation Unlimited
7700 Piper Road
Ashley, OH 43003
(740) 548-7006 ext. 115
mhiggins@recreationunlimited.org
www.recreationunlimited.org

STEPPING STONES DAY CAMP

**Given Campus
5650 Given Road
Cincinnati, OH 45243**

Day Camp

CLIENTELE: Mild to moderate intellectual, developmental or physical disability

AGE RANGE: 5 through 22 years of age

SESSIONS: Week 1: "Life is Better at Summer Camp" - June 3-7
Week 2: Fearless Exploration - June 10-14
Week 3: Lights, Camera -- Action! - June 17-21
Week 4: Wild, Wild, West! - June 24-28
Week 5: Stars -- Stripes -- Camp! - July 1-3 (no camp 7/4 & 7/5)
Week 6: Once Upon a Time - July 8-12
Week 7: Sea, Sun and Luau Fun - July 15-19
Week 8: Retro Rock n' Roll - July 22-26
Week 9: Stepping Stones' Spirit - July 29-August 2

FEES: \$69 per day

CAMPERSHIPS: Yes

APPLICATION DEADLINE: Space is limited and we highly encourage everyone to apply as early as possible to reserve your spot.

ACTIVITIES: Abundant wildlife, hiking trails, an outdoor swimming pool and lake for fishing and boating activities

OTHER INFORMATION: Ages 5-12: drop-off will be at 9:00 a.m. and pick-up will be at 3:00 p.m. Ages 13-22: drop off will be at 9:15 a.m. and pick-up will be at 3:15 p.m. Standard staffing is 6:1 ratio.

MAKE INQUIRIES TO: Jeannie Ludwig
Stepping Stones
5650 Given Road
Cincinnati, OH 45243
(513) 965-5108
jeannie.ludwig@steppingstonesohio.org
www.steppingstonesohio.org/stepping-stones-summer/

Summer Programs



Therapeutic Horsemanship Program at the Achievement Centers' Camp Cheerful!

Children and adults, ages 4 and older with and without special needs, enjoy the many benefits of the therapeutic horsemanship program tailored to their physical, mental and emotional strengths and capabilities.

Our therapeutic horsemanship program includes:

- **Adapted Horseback Riding Program:** This program provides adaptive recreational horseback riding lessons for individuals with and without special needs, with an emphasis on proper riding position and reining skills.
- **Equine Assisted Leadership, Team Building and Mental Health Groups:** These equine-assisted sessions are hands-on, experiential and unmounted (no riding). Using the unique abilities of horses and their natural herd dynamics, participants experience self-awareness, mindfulness and effective communication. Activities motivate through common goals, creativity and distributed ownership as everyone has a role in participation. Professionally facilitated by EAGALA & PATH Certified Equine Specialists. **Call for customized packages.**
- **Pony Pals Program:** This program is for typically developing children. Classes are 1 hour, and participants will spend 30 minutes participating in each activity listed below.
- **Scout Groups:** This is a 1 1/2 hour combination activity/ride package. Participants rotate through each 30-minute activity listed: ground lesson activity, riding lesson activity, art & craft activity.
- **Barn Tours:** This tour is an excellent introduction to horses as participants will be invited to pet the horses as well as take pictures with their favorite horse or pony! Groups may choose to also include a hands-on activity such as grooming, leading, etc. This program is designed for a 1-time visit.

Benefits of Therapeutic Horseback Riding for Children with Disabilities:

- Balance, posture, strength
- Flexibility
- Teamwork, cooperation
- Self-confidence, self-esteem
- Emotional control, self-discipline
- Hand-eye coordination
- Visual/partial perception
- Remedial math and reading skills
- Advanced equestrian skills

2024 Therapeutic Riding Dates:

- Session 3: May 20-July 27
- Session 4: July 29-October 5
- Session 5: October 7-December 14

Cost: \$400 per session with an additional annual registration fee of \$50

For more information about our Therapeutic Horsemanship Program, please contact Cory Ramsey, Manager of Equine Programs at (440) 238-6200 x 225 or cory.ramsey@achievementctrs.org or visit <https://campcheerful.achievementcenters.org/program/therapeutic-horsemanship/>.

This directory is for information purposes only. No official endorsement by the Region 10 State Support Team should be inferred

Be advised that each camp has their own COVID-19 policies and procedures. Please review or contact them directly.

IDEA Disclaimer Notice: This document was supported in whole or in part by the U.S. Department of Education, Office of Special Education Programs, (Award #H027A140111, CFDA 84.027A, awarded to the Ohio Department of Education). The opinions expressed herein do not necessarily reflect the policy or position of the U.S. Department of Education, Office of Special Education Programs, and no official endorsement by the Department should be inferred.