

# Art and its Impact on Fashion Trends

Women's Swimwear  
Katie Moylan  
Trend and Fashion Forecasting  
May 25th, 2023

“The English Bed” By Guillermo Lorca Garcia  
Medium Used: Oil painting  
Style: Contemporary and Surrealism



# Cheetah Print and its influence

Located at the Moco Museum in Amsterdam

-Cheetah print, with its distinctive spots, has been widely used as a print and pattern in swimwear design. The bold and eye-catching nature of cheetah print adds a sense of allure, wildness, and sophistication to swimwear garments.

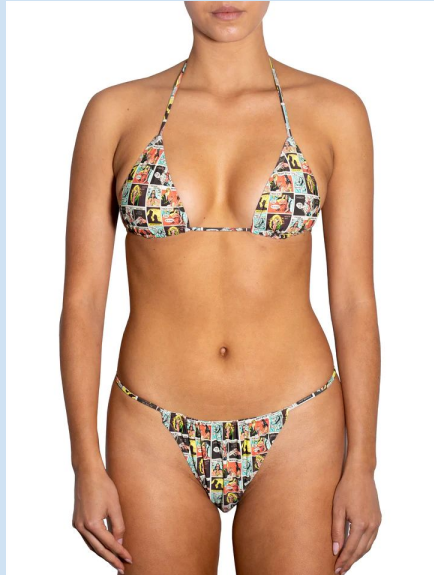
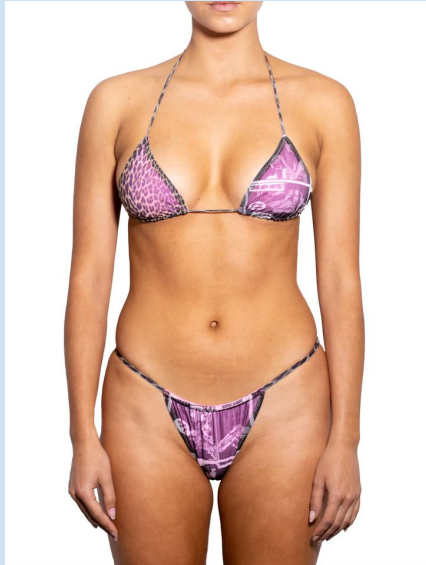
This painting caught my eye because it is very bold and distinctive, which can be associated with making a statement and exuding confidence. Swimwear featuring cheetah print allows individuals to express their personal style and embrace their bold and adventurous side.



# Pop Art and Comic-Style Imagery and Design

-Pop arts vibrant colors and bold imagery have inspired swimwear designers to incorporate graphic prints reminiscent of comic book panels, for example Roy Lichtenstein's

Pop art's irreverence and sense of humor have influenced swimwear silhouettes, leading to the creation of more playful and unconventional designs.



"Drowning Girl" by Roy Lichtenstein in 1963

Located that the MoMa in New York

Style: Pop Art, Medium: Painting





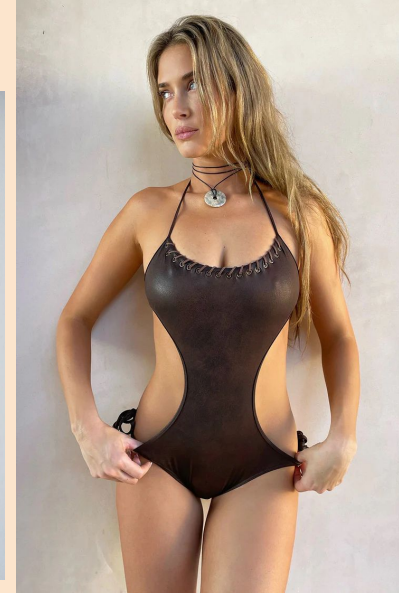
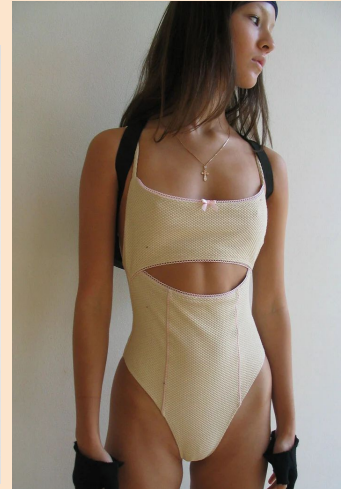
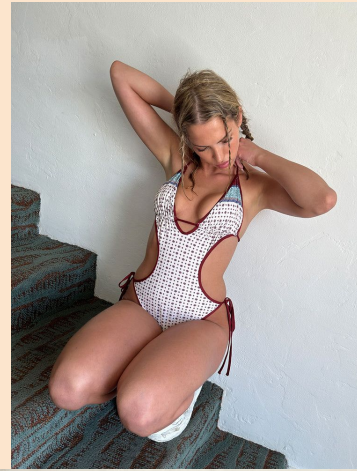
"Les Demoiselles d'Avignon"

By Pablo Picasso 1907  
Medium used: Painting  
Located at the the MoMa  
Style: Cubism

## Geometric Shapes

-Thanks to art, Geometric shapes, such as stripes, chevrons, triangles, squares, and circles, have been widely incorporated into swimwear patterns and prints and takes most of its inspiration from artwork

Geometric shapes have inspired the creation of unique cutouts and silhouettes in women's swimwear. Swimsuits may feature angular or asymmetrical cutouts, creating a visually striking and modern aesthetic. Geometric shapes are often used to frame or highlight certain parts of the body, adding an element of architectural design to swimwear.





"The Jungle" painted by Henri Rosseau in 1910

Medium used: Oil painting

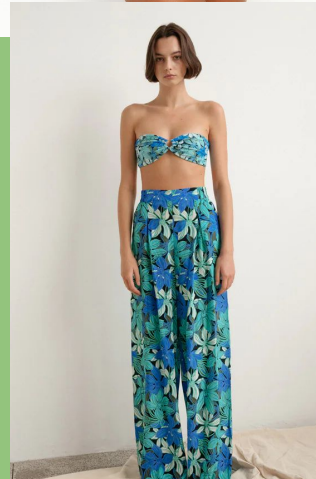
## Landscape/Tropical

-This style of art known as "Naïve art" or "Primitivism." Henri Rousseau was a self-taught artist, and his works are characterized by their simplified forms, flattened perspectives, and vivid colors.

Correlation and Influence: Rousseau's depiction of tropical foliage and exotic animals in "The Jungle" could inspire swimwear designs that incorporate nature-inspired and tropical esque motifs.

-Tropical designed swimwear has been trending for years now, and will continue to be a trend because of its timeless and natural theme

"The Jungle" possesses a dreamlike quality and a sense of escape. Consumers are attracted to tropical themed swimwear because it gives a sense of escape and exotic feel





# Nature's Pastel Femininity





# Nature's Pastel Femininity

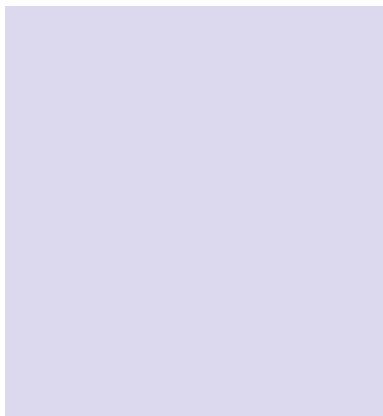


# Spirit of the Theme

- Feminine
- Light
- Gentle, Soft
- Graceful
- Serene
- Dainty







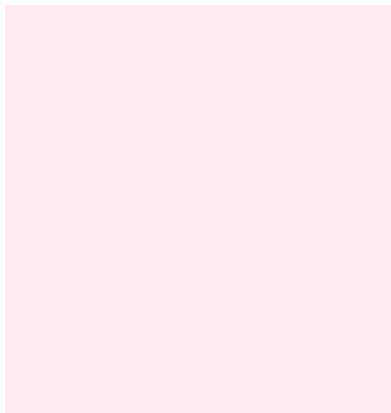
“Lilac Dreams”



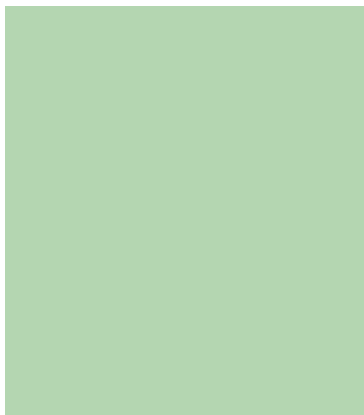
“Sunbeam”



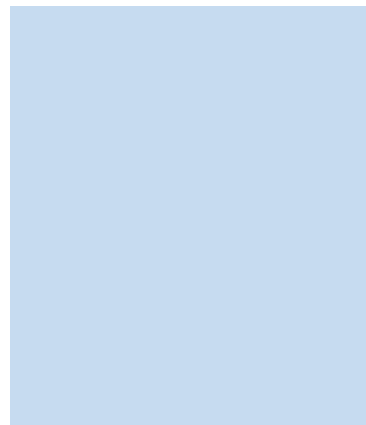
“Sephira”



“Belle”



“Meadow Whisper”



“Stella Blue”

# Swatches



Double Jersey Knit, 100%  
Wool



Pointelle, 100%  
Cotton



Embroidered  
Eyelet, 100%  
Chambray



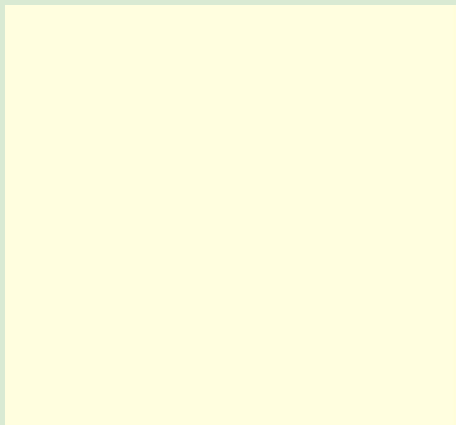
Embroidered Eyelet,  
100% Rayon



# Summary Slide



Outfits



Color



Theme



Swatch

# Work Cited

-MoMa. “ Moma.” *The Museum of Modern Art*,  
[www.moma.org/tickets/select?gad=1&gclid=CjoKCQjwjryjBhDoARIsAMLvnF9muRZO8kirNkaijPqh2acfs9DtU17\\_qTCvZEmLqAVt-zo7MklDjIYaAngNEALw\\_wcB&gclsrc=aw.ds](http://www.moma.org/tickets/select?gad=1&gclid=CjoKCQjwjryjBhDoARIsAMLvnF9muRZO8kirNkaijPqh2acfs9DtU17_qTCvZEmLqAVt-zo7MklDjIYaAngNEALw_wcB&gclsrc=aw.ds). Accessed  
25 May 2023.

-Moore, Brad. “Roy Lichtenstein - 152 Artworks - Painting.” *Www.Wikiart.Org*,  
[www.wikiart.org/en/roy-lichtenstein](http://www.wikiart.org/en/roy-lichtenstein). Accessed 25 May 2023.