



Katie Moylan

Final Tech Pack

Original Jacket: Albert Nipon

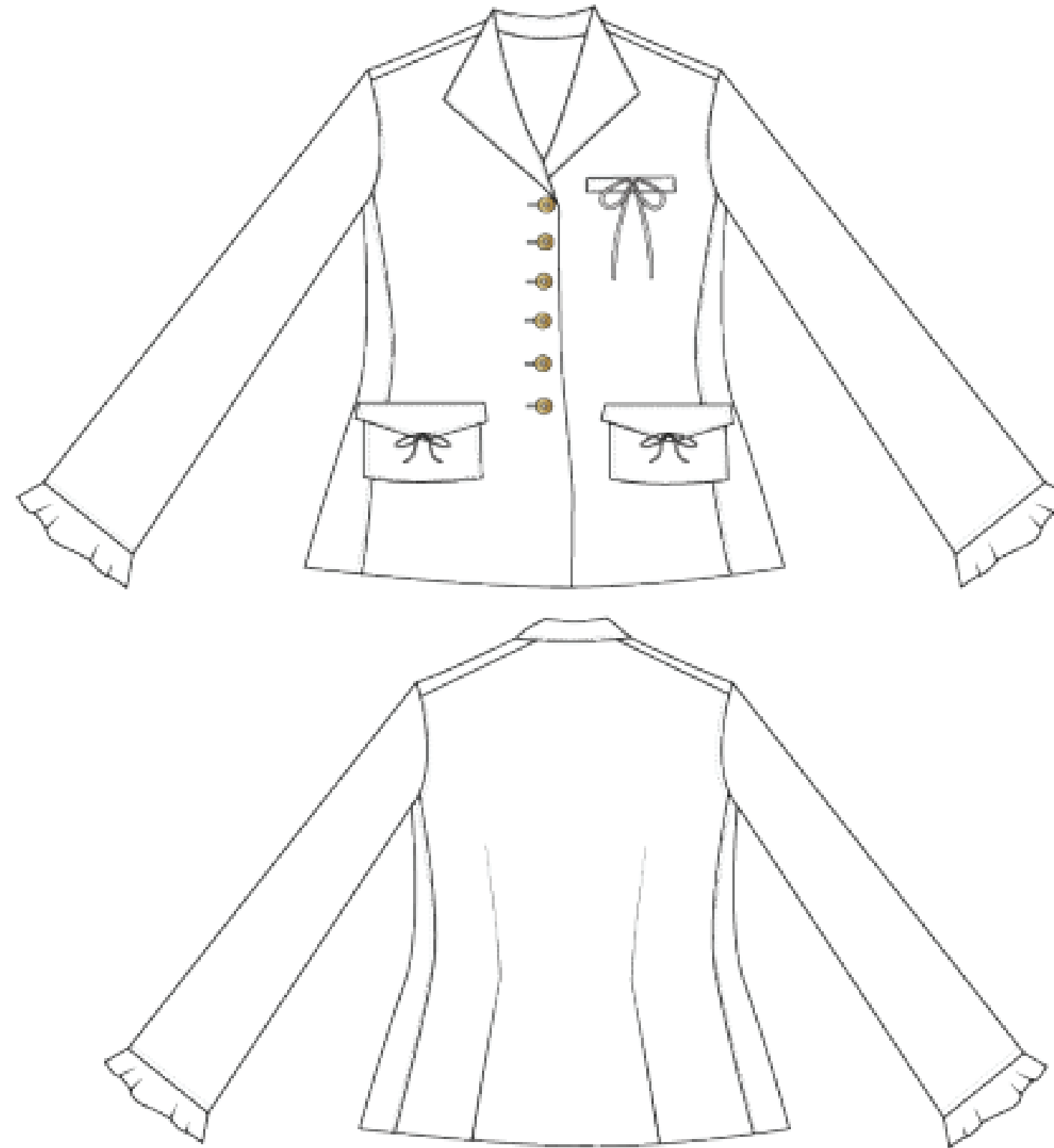
Target Market: Missy

Retail Price: \$250



B/W TECHNICAL FLAT SKETCHES - JACKET

SEASON:	WINTER 2025	DATE:	January 29th, 2023
GROUP/THEME NAME:	Classic	STYLE #:	KT-112
SIZE CLASSIFICATION / SIZE RANGE:	Missy 0-12	TECHNICAL DESIGNER:	Katie Moylan
FABRIC NAME:	Chino	PRODUCT CATEGORY:	Jackets
FIBER CONTENT:	100% Cotton 2% Lycra	BRAND / LABEL:	Albert Nipon
STYLE DESCRIPTION:	6 Button Blazer with Pockets		



COMPETITOR RESEARCH - JACKET

SEASON:	WINTER 2025	DATE:	January 29th, 2023
GROUP NAME:	Classic	STYLE #:	KT-112
SIZE CLASSIFICATION/ RANGE:	Missy 0-12	TECHNICAL DESIGNER:	Katie Moylan
FABRIC NAME:	Chino	PRODUCT CATEGORY:	Jackets
FIBER CONTENT:	100% Cotton 2% Lycra	BRAND / LABEL:	Albert Nipon
STYLE DESCRIPTION:	6 Button Blazer with Pockets		

BRAND / LABEL:	Albert Nipon	PRODUCT CATEGORY PRICE RANGE:	\$120-\$350
TARGET MARKET SEGMENT:	Womens		

PHOTO	PHOTO	PHOTO
		

BRAND / LABEL:	Anne Klein	BRAND / LABEL:	Ralph Lauren	BRAND / LABEL:	Donna Karan
RETAIL STORE:	Dillards	RETAIL STORE:	Bloomingdales	RETAIL STORE:	Saks Fifth Ave
RETAIL PRICE:	\$128.00	RETAIL PRICE:	\$398.00	RETAIL PRICE:	\$495.00
OTHER INFORMATION:	100% Polyester with 100% Silk Lining	OTHER INFORMATION:	Double Breasted Blazer, Made with Polyester, Viscose and Wool	OTHER INFORMATION:	Tweed Single-Button Blazer

COMPETITOR COST ANALYSIS - JACKET

SEASON:	WINTER 2025	DATE:	January 29th, 2023
GROUP NAME:	Classic	STYLE #:	KT-112
SIZE CLASSIFICATION/ RANGE:	Missy 0-12	TECHNICAL DESIGNER:	Katie Moylan
FABRIC NAME:	Chino	PRODUCT CATEGORY:	Jackets
FIBER CONTENT:	100% Cotton 2% Lycra	BRAND / LABEL:	6 Button Blazer with Pockets
STYLE DESCRIPTION:	6 Button Blazer with Pockets		

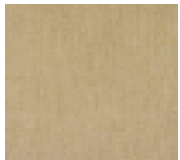
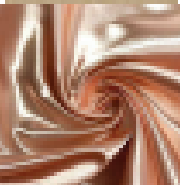



BRAND / LABEL:	Albert Nipon	PRODUCT CATEGORY	\$120-\$350
TARGET MARKET SEGMENT:	Womens	PRICE RANGE:	

BRAND / LABEL:	Anne Klein	BRAND / LABEL:	Ralph Lauren	BRAND / LABEL:	Donna Karan
RETAIL STORE:	Dillards	RETAIL STORE:	Bloomingdales	RETAIL STORE:	Saks Fifth Ave
TYPE OF BRAND:	Wholesale	TYPE OF BRAND:	Wholesale	TYPE OF BRAND:	Wholesale
RETAIL PRICE:	\$128.00	RETAIL PRICE:	\$398.00	RETAIL PRICE:	\$495.00
RETAIL MARKUP:	52.50%	RETAIL MARKUP:	52.50%	RETAIL MARKUP:	52.50%
WHOLESALE COST:	\$60.80	WHOLESALE COST:	\$189.05	WHOLESALE COST:	\$235.13
WHOLESALE MARKUP:	60.00%	WHOLESALE MARKUP:	60.00%	WHOLESALE MARKUP:	60.00%
TOTAL COST:	\$24.32	TOTAL COST:	\$75.62	TOTAL COST:	\$94.05
	COST ESTIMATES		COST ESTIMATES		COST ESTIMATES
FABRIC:	\$12.15	FABRIC:	\$20.85	FABRIC:	\$19.50
TRIM:	\$0.16	TRIM:	\$1.67	TRIM:	\$1.56
CMT / LABOR:	\$10.94	CMT / LABOR:	\$18.75	CMT / LABOR:	\$17.55
PACKING MATERIALS:	\$0.24	PACKING MATERIALS:	\$0.24	PACKING MATERIALS:	\$0.38

	COST RANGE ESTIMATE - BUDGET	PERCENT TO TOTAL	
FABRIC:	\$12.15-\$20.85	50%	
TRIM:	\$0.16-\$1.67	4%	
CMT /LABOR:	\$10.94-\$18.75	45%	
PACKING MATERIALS:	\$0.24-\$0.24	1%	

ESTIMATED BILL OF MATERIALS - JACKET

SEASON:	WINTER 2025	DATE:	January 29th, 2023
GROUP NAME:	Classic	STYLE #:	KT-112
SIZE CLASSIFICATION / RANGE:	Missy 0-12	TECHNICAL DESIGNER:	Katie Moylan
FABRIC NAME:	Chino	PRODUCT CATEGORY:	Jackets
FIBER CONTENT:	100% Cotton 2% Lycra	BRAND / LABEL:	Albert Nipon
STYLE DESCRIPTION:	6 Button Blazer with Pockets		

FABRIC / TRIM IMAGE	FABRIC / TRIM / ITEM	PLACEMENT ON GARMENT	COLOR NAME PANTONE #	SIZE / WIDTH WEIGHT	QUANTITY UOM	COST RANGE ESTIMATE (BUDGET)
	Chino	Shell	Cream #12-0804 TCX	58"/60"	1 3/4 YD	\$8.00/YD
	100% Cotton 2% Lycra			12 oz		
	Satin Lining	Lining	Grey #18-0601	58"/60"	1 1/2 YD	\$1.20/YD
	100% Polyester			6 oz		
	Interfacing	Collar, Lapel and CF	White	40"	2 YD	\$0.15/YD
	100% Polyester			Med. Wt.		
	4 Hole Buttons	CF	Cream #12-0804 TCX	28L	5	\$0.25/YD
	Metal					
	Bows	Front Pockets, Chest Pocket	Cream #12-0804 TCX		3	\$0.20/PC
	100% Polyester					
THREAD		Allover	Cream #12-0804 TCX	T40	160 YD	0.00075/YD
		Topstitching	Cream #12-0804 TCX	T60	40 YD	0.00075/YD

LABELS

Brand Main Label	Center Back Neck	White	2"x.75"	1	\$0.15/PC
Care/Content Label	Wearer's Left Side Seam	White	2"x1"	1	\$0.10/PC

Picture of Garment

FRONT:



DESIGN SHEET WITH CAD'S

SEASON:	Winter 2025	DATE:	March 10th, 2024
GROUP NAME:	Classics	STYLE #:	KT-112
SIZE CLASSIFICATION / RANGE:	Missy 0-8	TECHNICAL DESIGNER:	Katie Moylan
FABRIC NAME:	Herringbone	PRODUCT CATEGORY:	Jackets
FIBER CONTENT:	100% Wool	BRAND / LABEL:	Albert Nipon
STYLE DESCRIPTION:	Womens Tailored Jacket		



MAIN FABRIC DETAILS

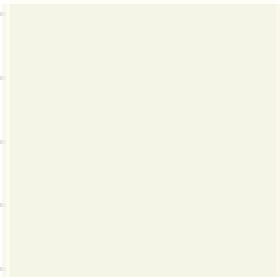
SEASON:	Winter 2025	DATE:	March 10th, 2024
GROUP NAME:	Classics	STYLE #:	KT-112
SIZE CLASSIFICATION / RANGE:		TECHNICAL DESIGNER:	Katie Moylan
FABRIC NAME:	Herringbone	PRODUCT CATEGORY:	Jackets
FIBER CONTENT:	100% Wool	BRAND / LABEL:	Albert Nipon
STYLE DESCRIPTION:	Womens Tailored Jacket		

--	--	--	--	--	--	--	--	--	--

FABRIC NAME:	Herringbone	FIBER CONTENT:	100% Wool
THREAD COUNT:	112x66	COLOR APPLICATION:	Piece Dyed
FABRIC WEIGHT:	5.2	GARMENT PLACEMENT:	Shell
FABRIC MILL, REF/ART # & COUNTRY:	2342 S Broadway, NY, U.S.		



Shell: 100% Wool
Herringbone



PANTONE®
11-4302 TPG
Cannoli Cream



Lining: 100% Silk
Charmeuse



PANTONE®
14-1115 TCE
Brige

FABRIC & TRIM PLACEMENT - FRONT

SEASON:	Winter 2025	DATE:	March 10th, 2024
GROUP NAME:	Classics	STYLE #:	KT-112
SIZE CLASSIFICATION / RANGE:		TECHNICAL DESIGNER:	Katie Moylan
FABRIC NAME:	Herringbone	PRODUCT CATEGORY:	Jackets
FIBER CONTENT:	100% Wool	BRAND / LABEL:	Albert Nipon
STYLE DESCRIPTION:	Womens Tailored Jacket		



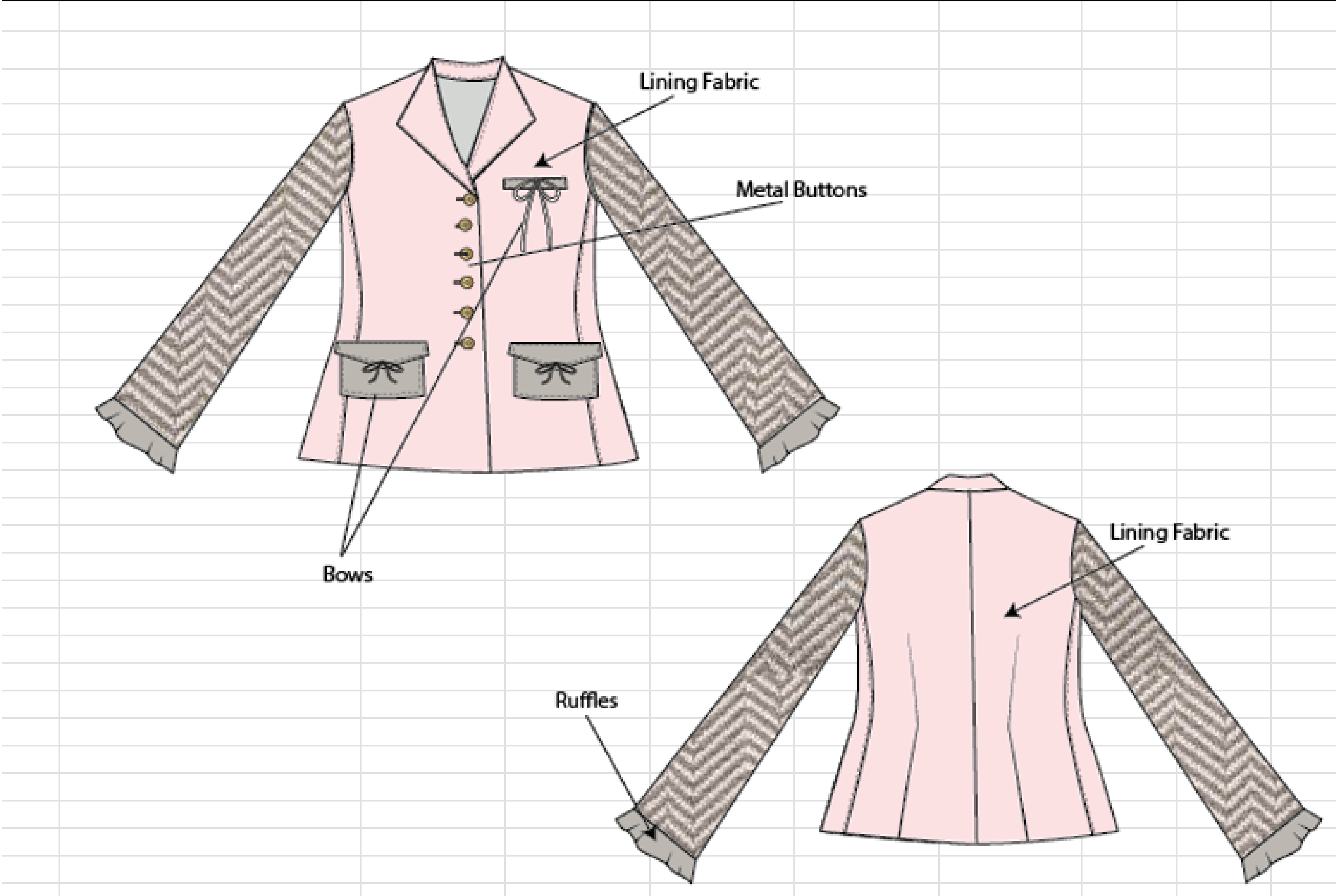
FABRIC & TRIM PLACEMENT - BACK

SEASON:	Winter 2025	DATE:	March 10th, 2024
GROUP NAME:	Classics	STYLE #:	KT-112
SIZE CLASSIFICATION / RANGE:		TECHNICAL DESIGNER:	Katie Moylan
FABRIC NAME:	Herringbone	PRODUCT CATEGORY:	Jackets
FIBER CONTENT:	100% Wool	BRAND / LABEL:	Albert Nipon
STYLE DESCRIPTION:	Womens Tailored Jacket		



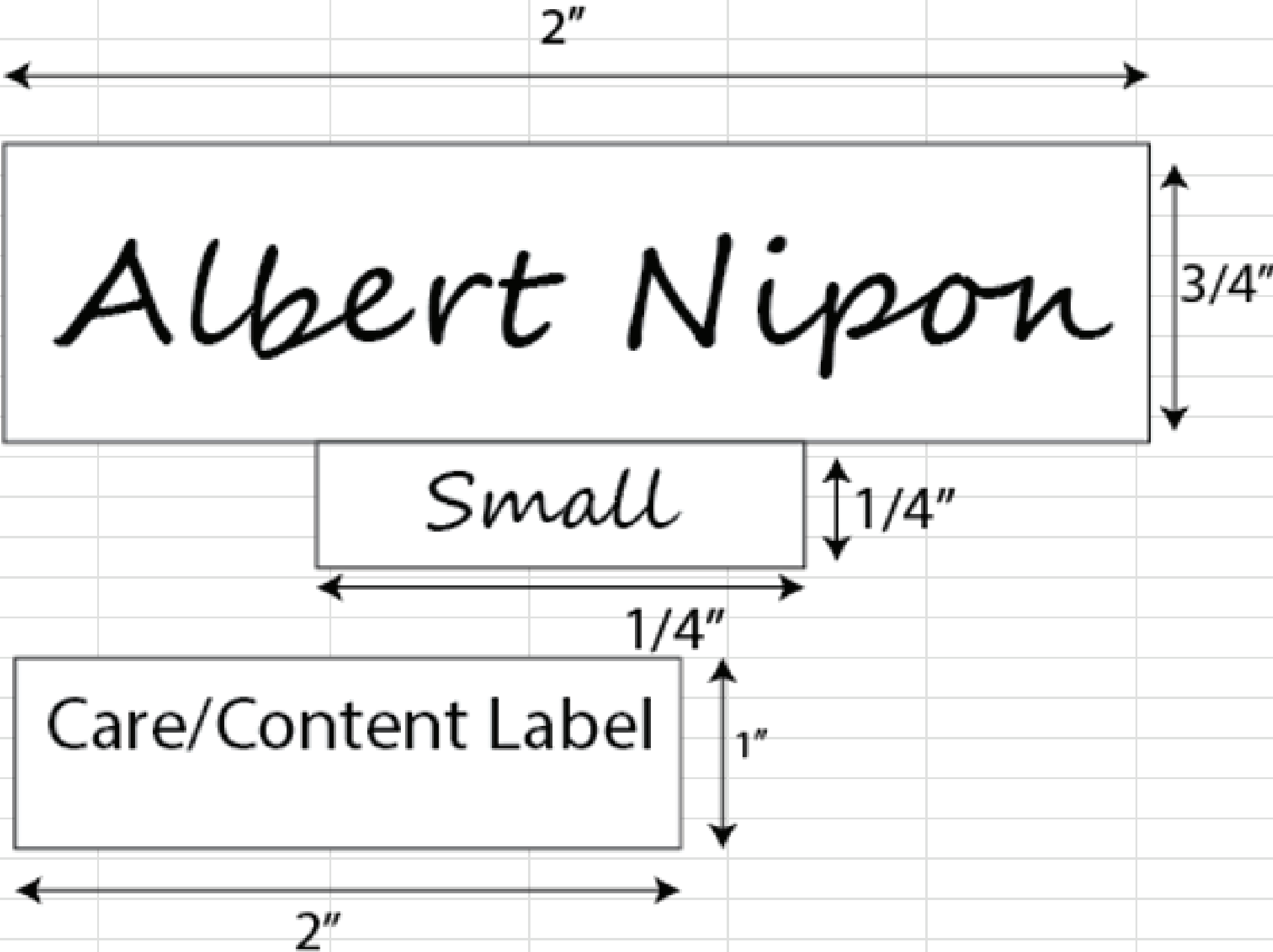
FABRIC & TRIM PLACEMENT - DETAILS

SEASON:	Winter 2025	DATE:	March 10th, 2024
GROUP NAME:	Classics	STYLE #:	KT-112
SIZE CLASSIFICATION / RANGE:		TECHNICAL DESIGNER:	Katie Moylan
FABRIC NAME:	Herringbone	PRODUCT CATEGORY:	Jackets
FIBER CONTENT:	100% Wool	BRAND / LABEL:	Albert Nipon
STYLE DESCRIPTION:	Womens Tailored Jacket		



LABEL PLACEMENT & PACKAGING

SEASON:	Winter 2025	DATE:	March 10th, 2024
GROUP NAME:	Classics	STYLE #:	KT-112
SIZE CLASSIFICATION / RANGE:		TECHNICAL DESIGNER:	Katie Moylan
FABRIC NAME:	Herringbone	PRODUCT CATEGORY:	Jackets
FIBER CONTENT:	100% Wool	BRAND / LABEL:	Albert Nipon
STYLE DESCRIPTION:	Womens Tailored Jacket		



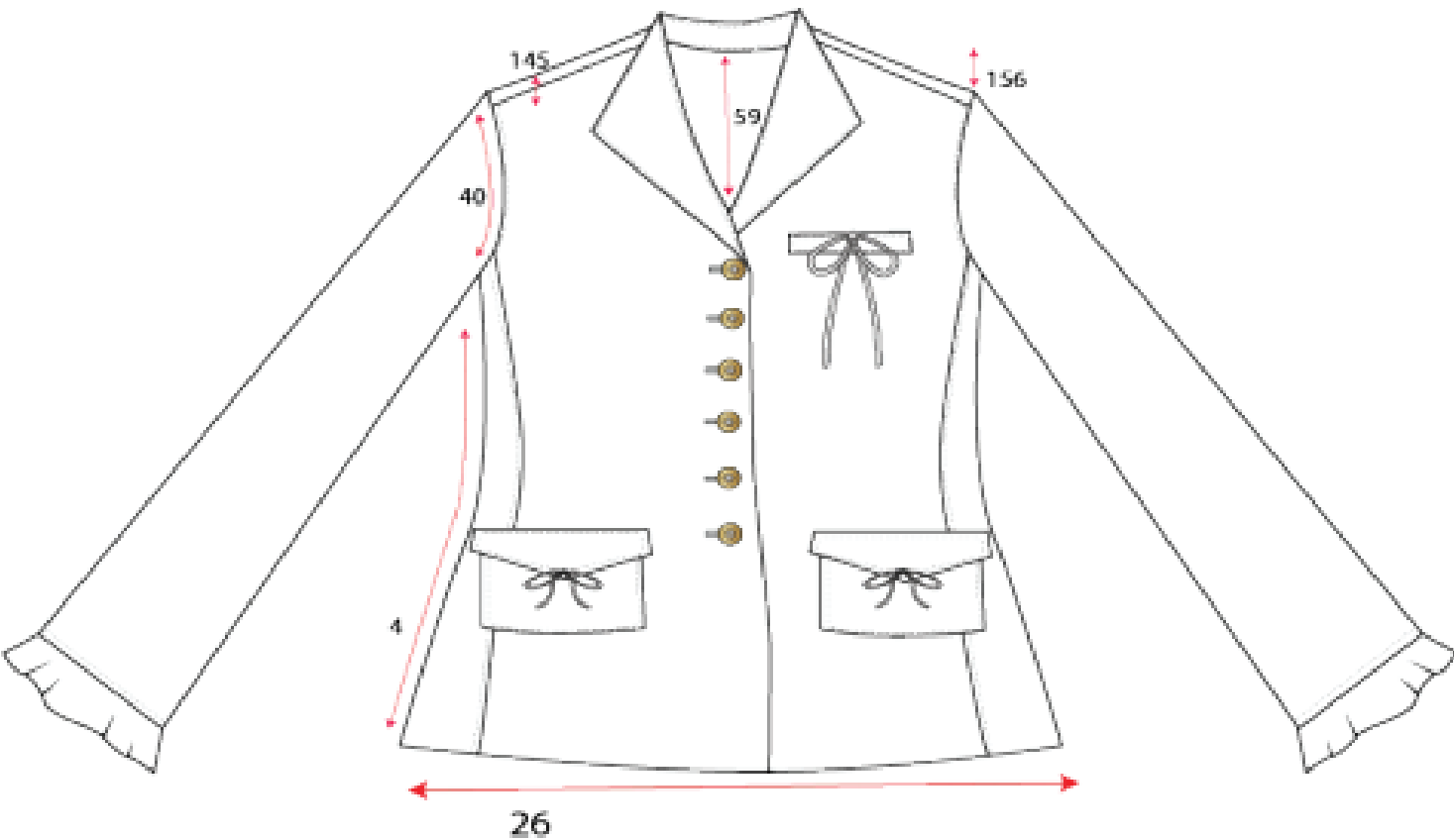
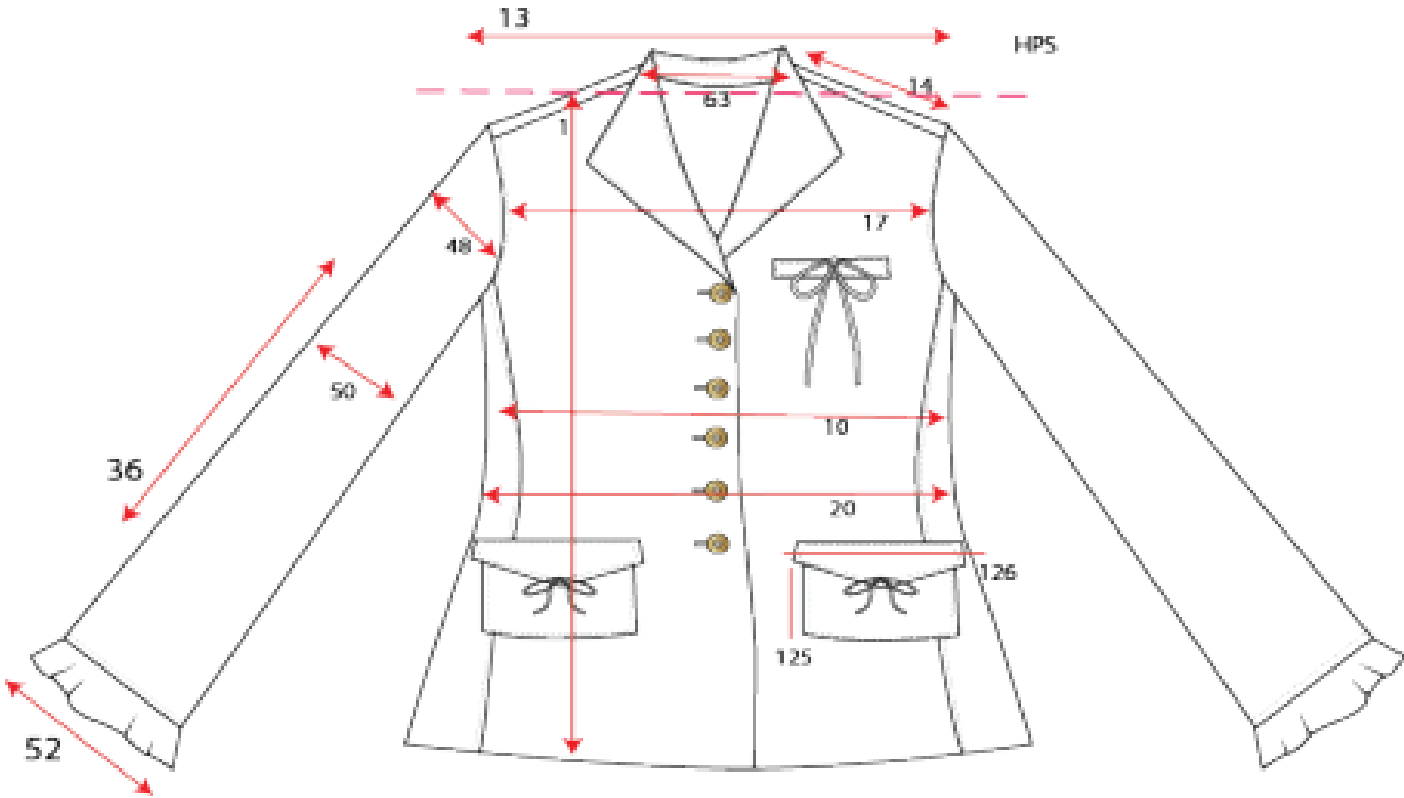
JACKET SAMPLE SPECIFICATION WORKSHEET

SEASON:	Spring '25	DATE:	Tuesday, January 23, 2024
GROUP/THEME NAME:	Business	STYLE #:	#KJ-12
SIZE CLASSIFICATION / SIZE RANGE:	XS-XL womens 0-14	TECHNICAL DESIGNER:	Katie Moylan
FABRIC NAME:	Worsted Wool	PRODUCT CATEGORY:	Jacket
FIBER CONTENT:	100% Wool	BRAND / LABEL:	Albert Nipon
STYLE DESCRIPTION:	Blazer with pockets, bow details		

POINT OF MEASUREMENT						SKETCHES
MEASUREMENTS ARE:				SIZE:	8	
POM #	Description	Body Measurement	Functional Ease	Design Ease	Requested Measurement	
1	Length (from HPS)	24 1/2			24 1/2	
3	Center Back Length	24		-1	23	
4	Side Length	5		- 3/4	4 1/4	
14	Shoulder Width	16		1/4	16 1/4	
13	Across Shoulder Width	15 3/4		1/4	16	
17	Across Chest Width (4" from HPS)	13 1/4		1/2	13 3/4	
18	Across Back Width (4" from HPS)	13 3/4		1/2	13 3/4	
10	Chest Width (1" below AH)	17 3/4	1		18 3/4	
20	Waist Width (16 3/4" from HPS)	13 3/4	1/2		14 1/4	
26	Bottom Opening Width or Sweep	19	1		1	
42	Armhole Depth - Curved	8	1/2		8 1/2	
36	Sleeve Length (from top of AH)	23 1/2	1		24 1/2	
48	Muscle Width (1" below AH	6 1/4	1/2	1/2	6 3/4	
50	Elbow Width (8" from AH)	5 1/4	1/2	1/2	5 3/4	
52	Sleeve Opening Width	3 5/8	1/2	1/2	4 1/8	
63	Neck Width HPS to HPS	6 1/4			6 1/4	
60	Frt Neck Depth CF HPS to neckline	9 1/2			9 1/2	
72	Collar Height (at CB)	3			3	
73	Collarstand Height	3			3	
156	Shoulder Slope	1 1/5			1 1/5	
126	Pocket opening width	5 1/4			5 1/4	
125	Pocke Height	1 1/8			1 1/8	

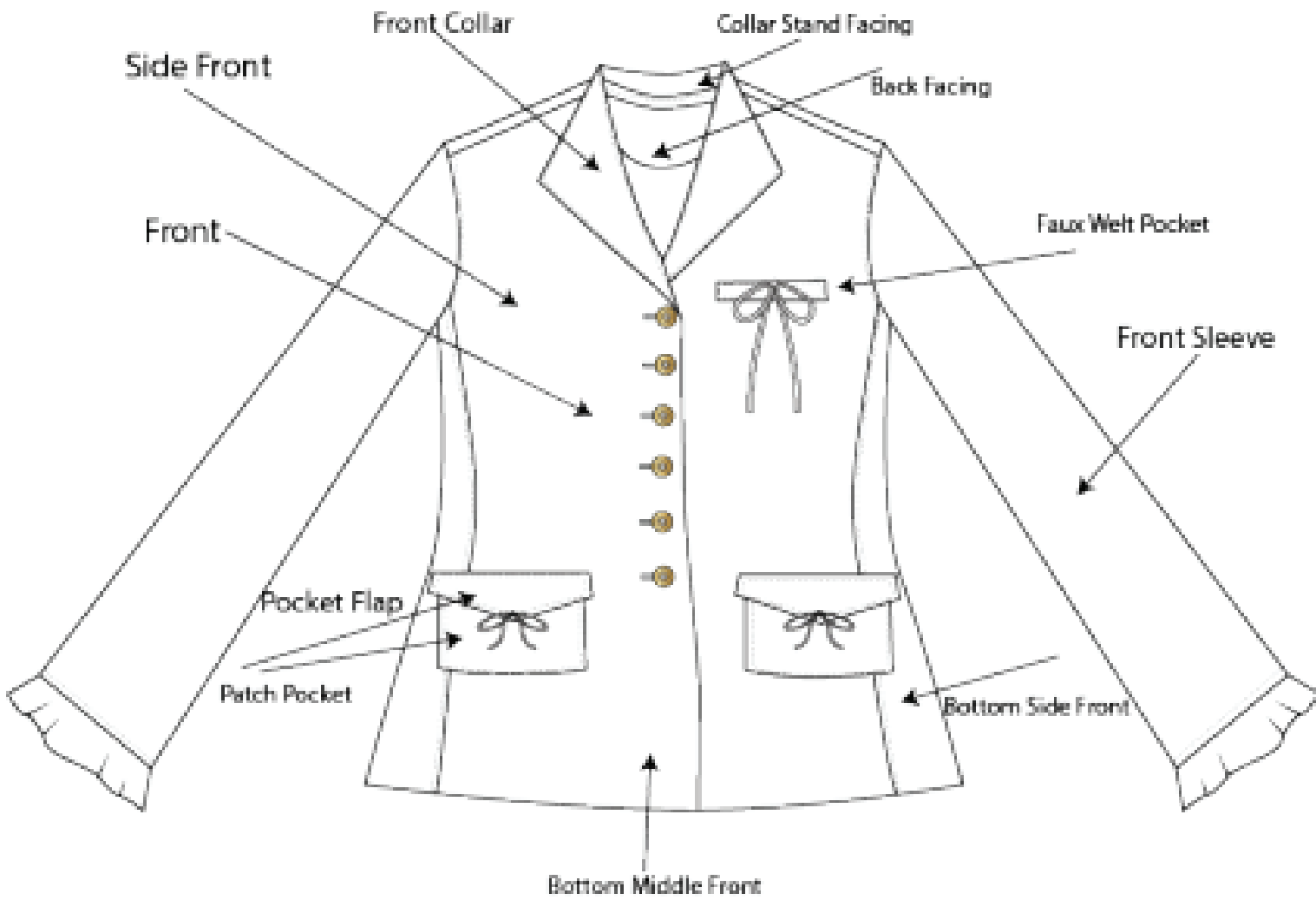
JACKET POM PLACEMENT SKETCH - FRONT

SEASON:	Spring '25	DATE:	Tuesday, January 23, 2024
GROUP NAME:	Business	STYLE #:	#KJ-12
SIZE CLASSIFICATION / RANGE:	XS-XL	TECHNICAL DESIGNER:	Katie Moylan
FABRIC NAME:	Worsted Wool	PRODUCT CATEGORY:	Jacket
FIBER CONTENT:	100% Wool	BRAND / LABEL:	Albert Nipon
STYLE DESCRIPTION:	Blazer with pockets, bow details		

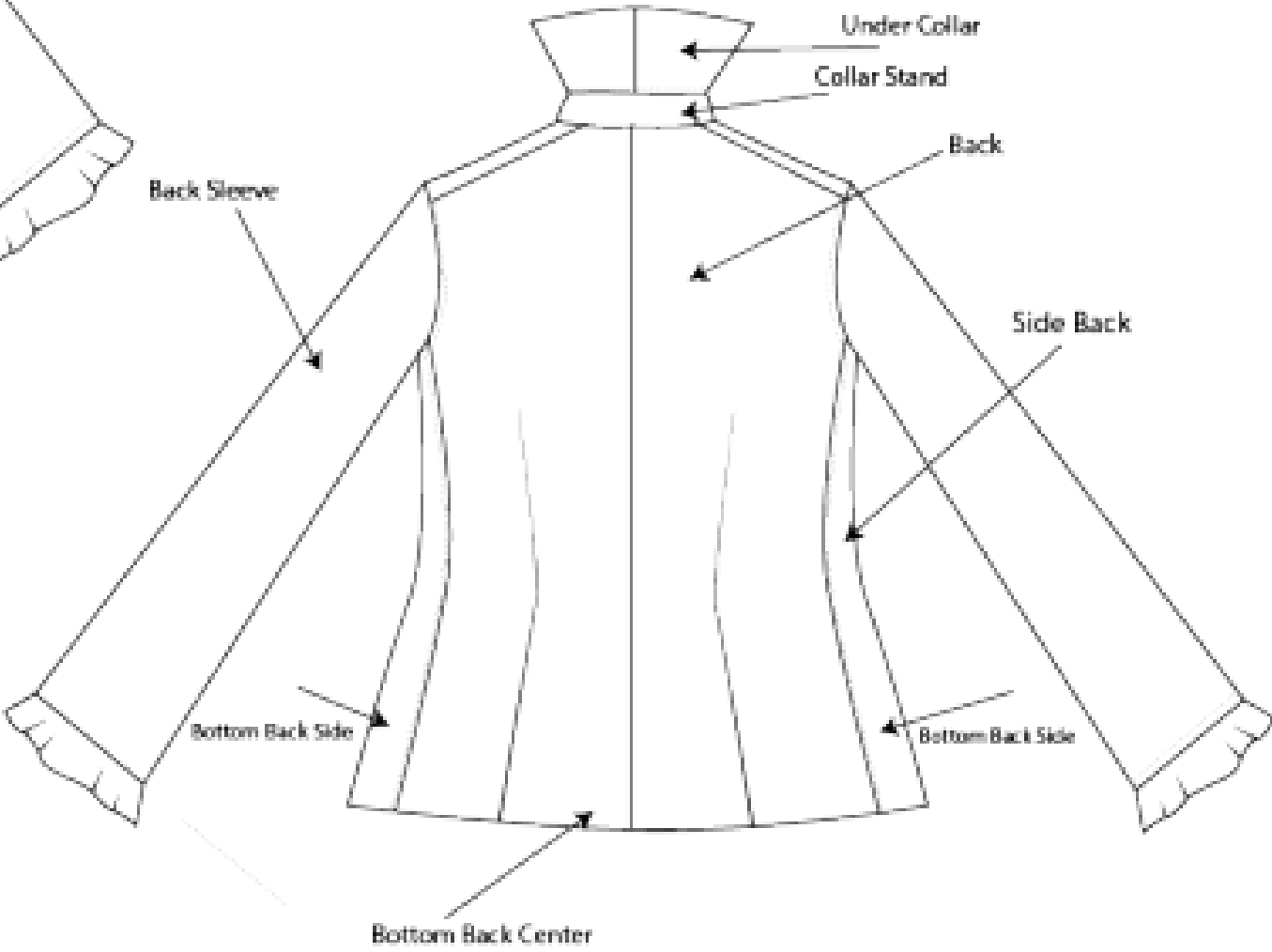


B/W TECHNICAL FLAT SKETCHES - JACKET

SEASON:	Fall 2025	DATE:	January 5th, 2024
GROUP/THEME NAME:	Classics	STYLE #:	KT-334
SIZE CLASSIFICATION / SIZE RANGE:	Womens 2-14	TECHNICAL DESIGNER:	Katie Moylan
FABRIC NAME:	Worsted Wool	PRODUCT CATEGORY:	Jackets
FIBER CONTENT:	100% Wool	BRAND / LABEL:	Albert Nipon
STYLE DESCRIPTION:	Womens Tailor Jacket		

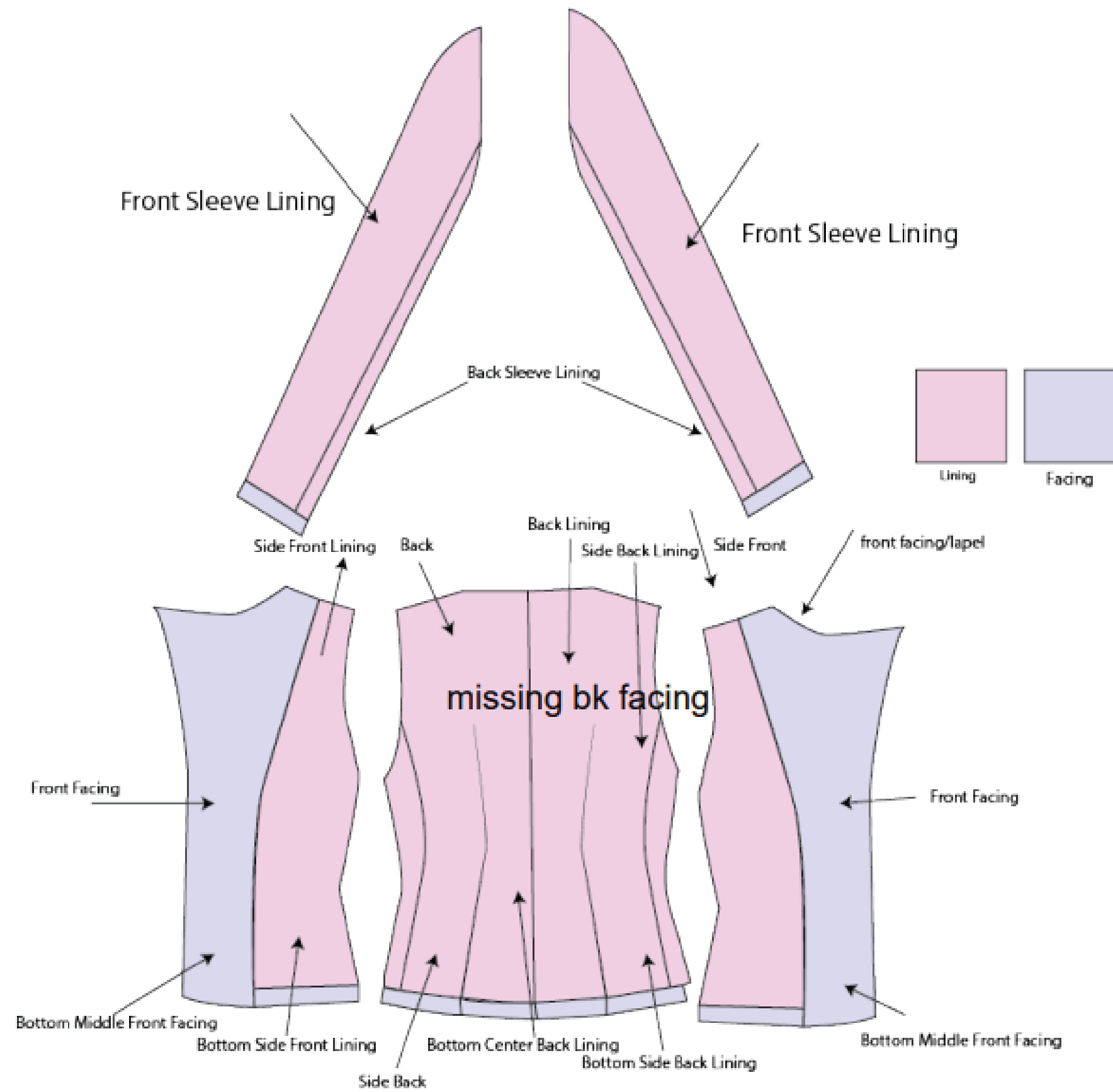


call out font must be blue



INSIDE VIEW TECHNICAL FLAT SKETCHES - JACKET

SEASON:	Fall 2025	DATE:	January 5th, 2024
GROUP NAME:	Classics	STYLE #:	KT-334
SIZE CLASSIFICATION / RANGE:	Womens 2-14	TECHNICAL DESIGNER:	Katie Moylan
FABRIC NAME:	Worsted Wool	PRODUCT CATEGORY:	Jackets
FIBER CONTENT:	100% Wool	BRAND / LABEL:	Albert Nipon
STYLE DESCRIPTION:	Womens Tailor Jacket		

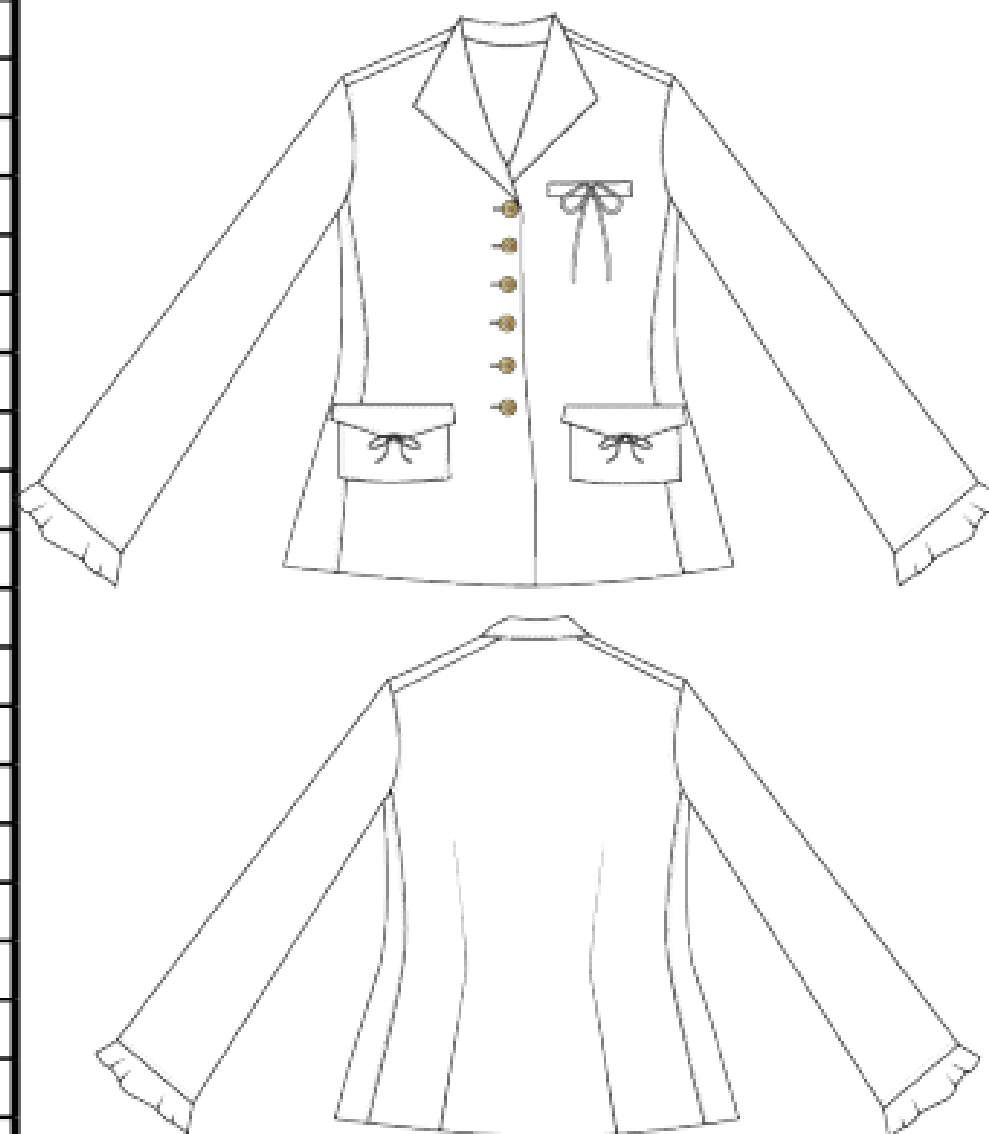


ESTIMATED PATTERN CARD - JACKET

SEASON:	Fall 2025	DATE:	January 5th, 2024
GROUP/THEME NAME:	Classics	STYLE #:	KT-334
SIZE CLASSIFICATION / SIZE RANGE:	Womens 2-14	TECHNICAL DESIGNER:	Katie Moylan
FABRIC NAME:	Worsted Wool	PRODUCT CATEGORY:	Jackets
FIBER CONTENT:	100% Wool	BRAND / LABEL:	Albert Nipon
STYLE DESCRIPTION:	Womens Tailor Jacket		

83	TOTAL NUMBER OF PATTERN PIECES TO CUT		
QTY	PATTERN PIECE BY FABRIC	FABRIC NAME & FIBER CONTENT	CUT DIRECTION/MATCHING/NAP
2	Front	Worsted Wool & 100% Wool	Cut 2 Way
2	Side Front	Worsted Wool & 100% Wool	Cut 2 Way
4	Bottom Middle Front	Worsted Wool & 100% Wool	Cut 2 Way
2	Bottom Side Front	Worsted Wool & 100% Wool	Cut 2 Way
2	Side Back	Worsted Wool & 100% Wool	Cut 2 Way
1	Back	Worsted Wool & 100% Wool	Cut 2 Way
2	Bottom Side Back	Worsted Wool & 100% Wool	Cut 2 Way
1	Bottom Center Back	Worsted Wool & 100% Wool	Cut 2 Way
2	Front Sleeve	Worsted Wool & 100% Wool	Cut 2 Way
2	Back Sleeve	Worsted Wool & 100% Wool	Cut 2 Way
1	Top Collar	Worsted Wool & 100% Wool	Cut 2 Way
2	Under Collar	Worsted Wool & 100% Wool	Cut 2 Way
2	Collar Stand	Worsted Wool & 100% Wool	Cut 2 Way
2	Front Facing	Worsted Wool & 100% Wool	Cut 2 Way
1	Back Facing	Worsted Wool & 100% Wool	Cut 2 Way
1	Faux Welt Pocket	Worsted Wool & 100% Wool	Cut 2 Way
2	Patck Pocket	Worsted Wool & 100% Wool	Cut 2 Way
4	Pocket Flap	Worsted Wool & 100% Wool	Cut 2 Way
2	Pocket Facing	Worsted Wool & 100% Wool	Cut 2 Way
	Lining	100% Silk	Cut 2 Way
2	Side Front Lining	100% Silk	Cut 2 Way
2	Bottom Side Front Lining	100% Silk	Cut 2 Way
1	Back Lining	100% Silk	Cut 2 Way
2	Bottom Back Side Lining	100% Silk	Cut 2 Way
1	Bottom Center Back Lining	100% Silk	Cut 2 Way
4	Pocket Bag	100% Silk	Cut 2 Way


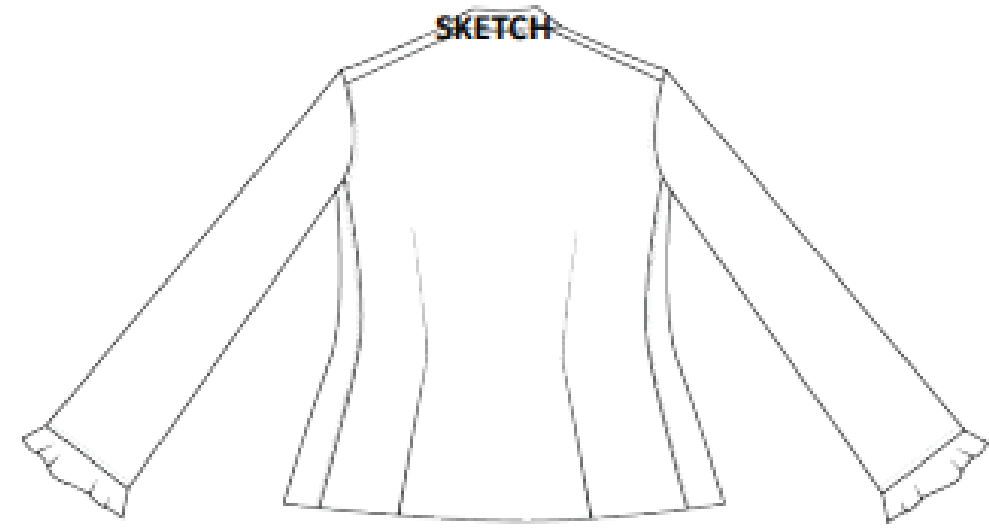
SKETCH



ESTIMATED CONSTRUCTION CALLOUTS - JACKET

SEASON:	Fall 2025	DATE:	January 7th, 2024
GROUP/THEME NAME:	Classics	STYLE #:	KT-445
RANGE:	Womens 0-12	TECHNICAL DESIGNER:	Katie Moylan
FABRIC NAME:	Worsted Wool	PRODUCT CATEGORY:	Jackets
FIBER CONTENT:	100% Wool	BRAND / LABEL:	Albert Nipon
STYLE DESCRIPTION:	Womens Tailor Jacket		

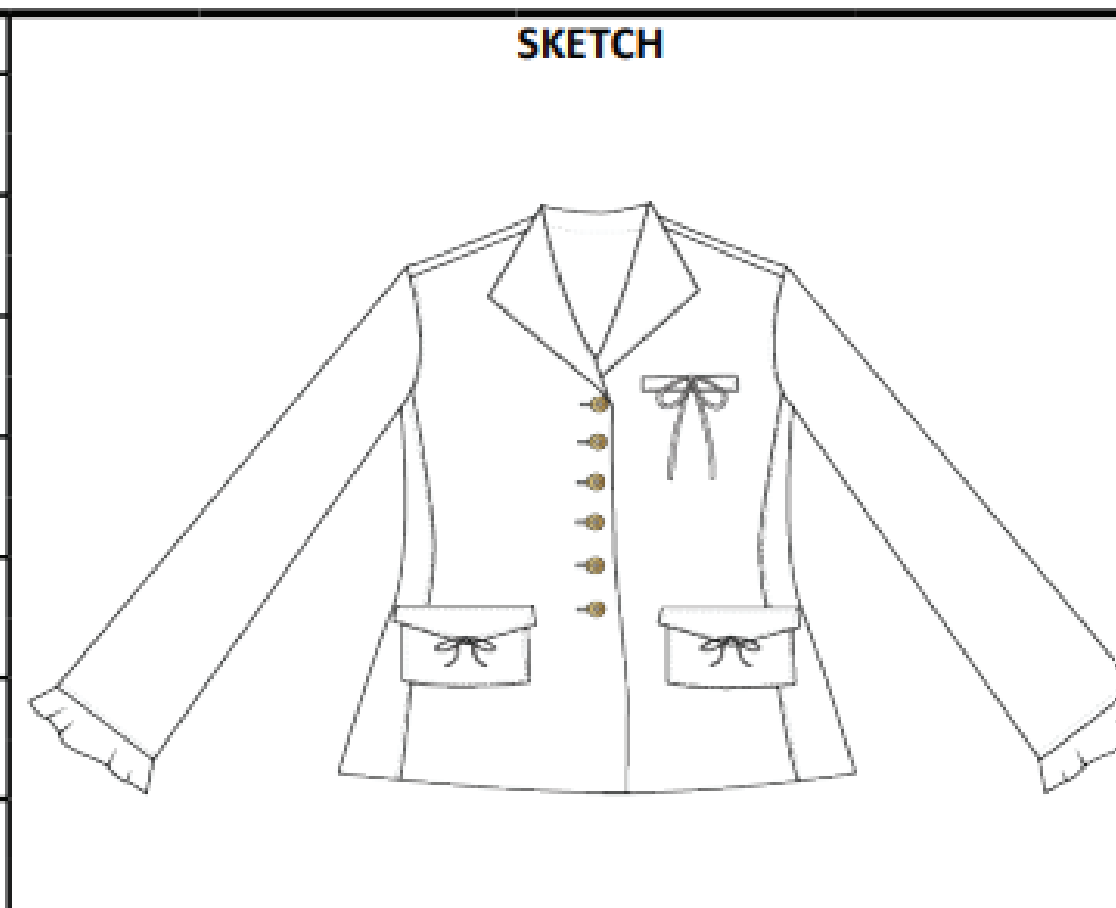
TOTAL ESTIMATED COST FOR GARMENT MAKE: \$25.65

LOCATION/PATTERN PIECE/SEAM NAME	CONSTRUCTION/STITCH/SEAM FINISH/TOP STITCH	SPI	EST. COST	SKETCH
Front Princess Seam	Join front and side panel with SN lockstitch	14-16	\$0.77	
Pocket Flap Bow Ties	Attatch Ties to Patch Pocket Flaps and Breast Pocket	14-16	\$1.22	
Front Pocket	Make and attatch patch pocket with SN edge stitch	14-16	\$2.00	
Front Pocket Flap	Make and set front pocket flap	14-16	\$2.00	
Front Breast Pocket	Make and set single welt pocket	14-16	\$1.98	
Back Princess Seam	Join back and side back with SN lockstitch	14-16	\$0.77	
ESTIMATED COST SUBTOTAL:			\$8.74	
LOCATION/PATTERN PIECE/SEAM NAME	CONSTRUCTION/STITCH/SEAM FINISH/TOP STITCH	SPI	EST. COST	SKETCH
Center Back Seam	Join backs with SN lockstitch	14-16	\$0.77	
Back Darts	Make darts with SN lockstitch	14-16	\$0.52	
Shoulder Seam	Join front shoulder to back shoulder with SN stitch	14-16	\$0.24	
Side Seam	Join front side to back side with SN lockstitch	14-16	\$0.54	
Front	Make lapel dart with SN lockstitch	12-14	\$0.53	
Front Facing	Make lapel dart with SN lockstitch	12-14	\$0.53	
ESTIMATED COST SUBTOTAL:			\$3.13	

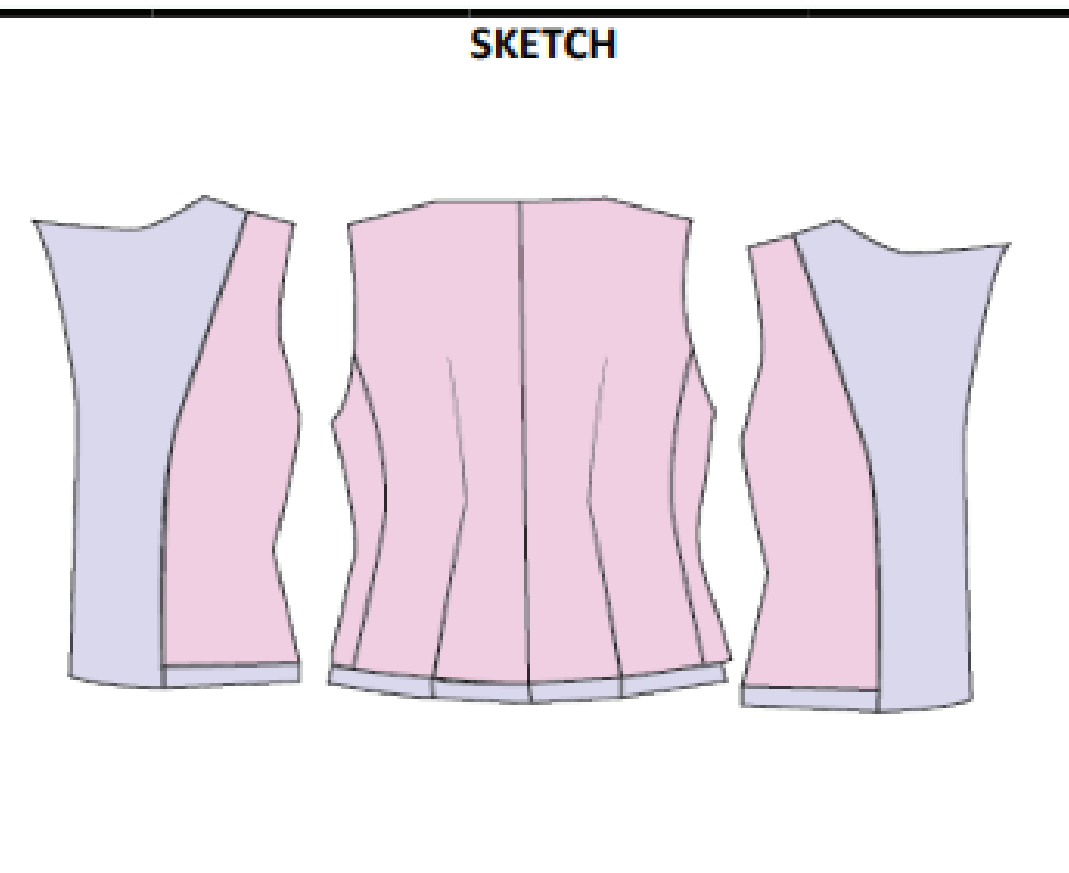
ESTIMATED CONSTRUCTION CALLOUTS - JACKET

SEASON:	Fall 2025	DATE:	January 7th, 2024
GROUP NAME:	Classics	STYLE #:	KT-445
SIZE CLASSIFICATION / RANGE:	Womens 0-12	TECHNICAL DESIGNER:	Katie Moylan
FABRIC NAME:	Worsted Wool	PRODUCT CATEGORY:	Jackets
FIBER CONTENT:	100% Wool	BRAND / LABEL:	Albert Nipon
STYLE DESCRIPTION:	Womens Tailor Jacket		

LOCATION/PATTERN PIECE/SEAM NAME	CONSTRUCTION/STITCH/SEAM FINISH/TOP STITCH	SPI	EST. COST
Center Front	Join front facing/shawl collar & Front with SN lockstitch	12-14	\$0.60
Shawl Collar	Join shawl collar at center back with SN lockstitch	12-14	\$0.60
Shawl Collar	Join collar stand and front with SN lockstitch	12-14	\$0.40
Shawl Collar	Join collar stand facing and front facing/shawl collar with SN lockstitch	12-14	\$0.40
Shawl Collar	Make SN edge stitch on collar stand seams	12-14	\$0.40
Shawl Collar	Set Collar to neckline	12-14	\$0.40
ESTIMATED COST SUBTOTAL:			\$2.80



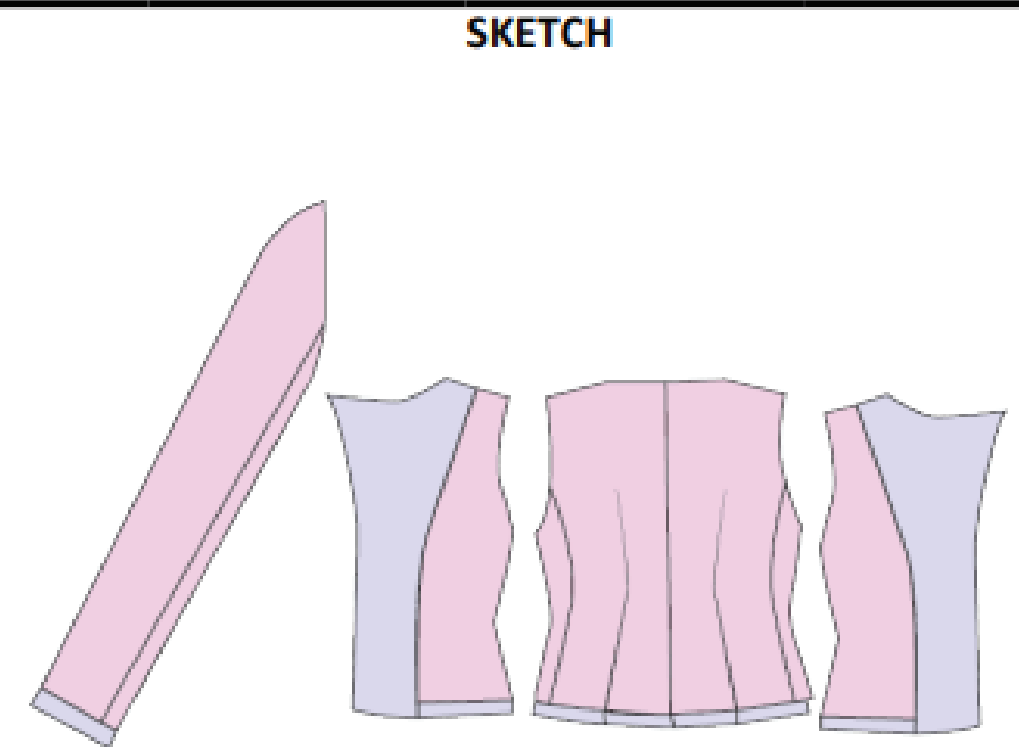
LOCATION/PATTERN PIECE/SEAM NAME	CONSTRUCTION/STITCH/SEAM FINISH/TOP STITCH	SPI	EST. COST
Sleeve Ruffles	Sew ruffle trim to sleeve edge with SN lockstitch	10-12	\$1.20
Armhole	Set sleeve to armhole with SN lockstitch	10-12	\$0.60
Front Princess Seam Lining	Join front princess lining to bottom front lining facing with SN lockstitch	10-12	\$0.77
Front Facing	Join front princess lining to front facing with SN lockstitch	10-12	\$0.77
Back princess seam lining	Join back lining to middle back lining with SN lockstitch	10-12	\$0.77
Back Facing	Join back lining to back facing with SN lockstitch	10-12	\$0.77
ESTIMATED COST SUBTOTAL:			\$4.88



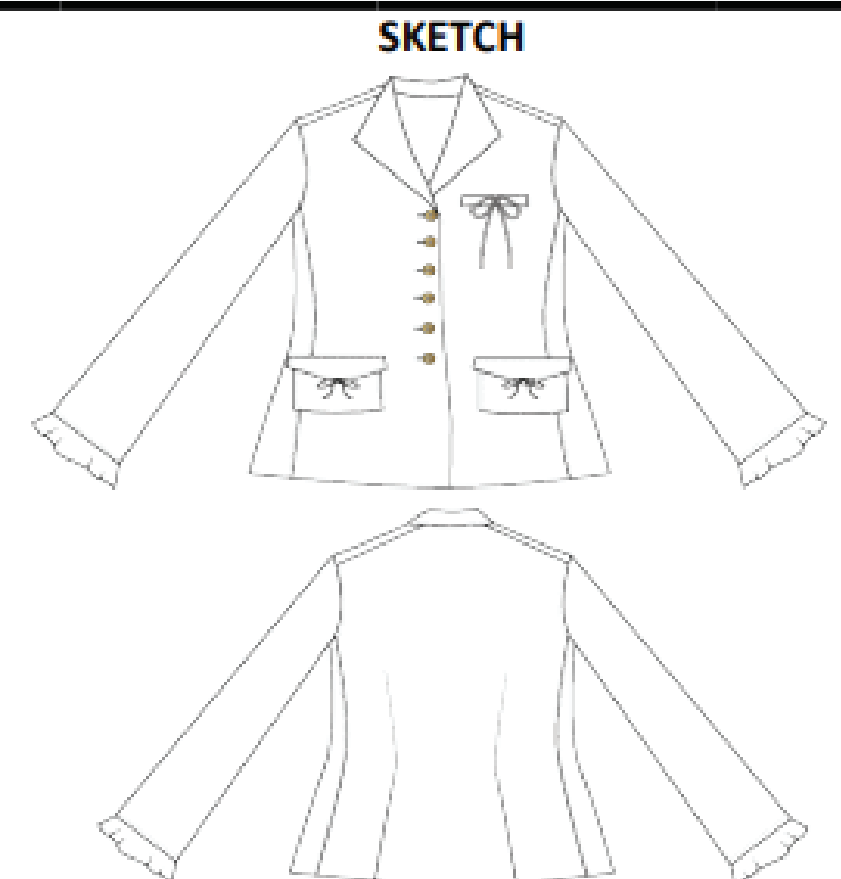
ESTIMATED CONSTRUCTION CALLOUTS - JACKET



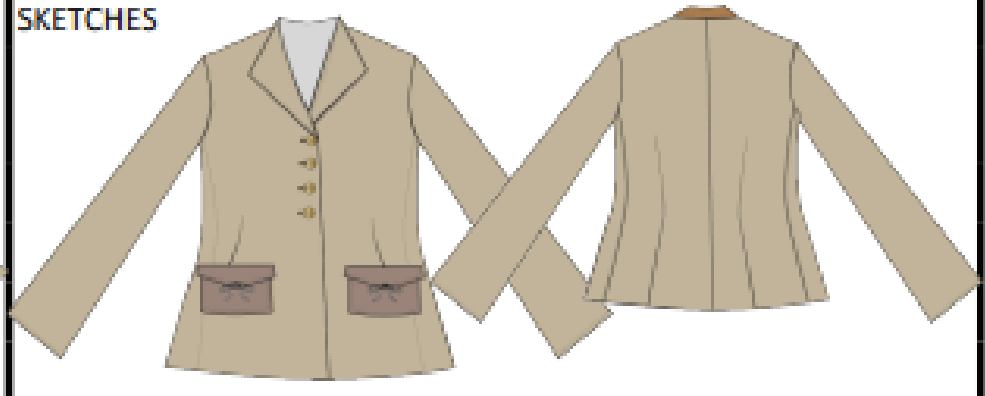
SEASON:	Fall 2025	DATE:	January 7th, 2024
GROUP NAME:	Classics	STYLE #:	KT-445
SIZE CLASSIFICATION / RANGE:	Womens 0-12	TECHNICAL DESIGNER:	Katie Moylan
FABRIC NAME:	Worsted Wool	PRODUCT CATEGORY:	Jackets
FIBER CONTENT:	100% Wool	BRAND / LABEL:	Albert Nipon
STYLE DESCRIPTION:	Womens Tailor Jacket		

LOCATION/PATTERN PIECE/SEAM NAME	CONSTRUCTION/STITCH/SEAM FINISH/TOP STITCH	SPI	EST. COST
Shoulder seam lining	Join front & back lining with SN lockstitch	10-12	\$0.29
Side Seam Lining	Join front & back lining with SN lockstitch	10-12	\$0.53
Front Sleeve Lining	Join upper & lower sleeves lining with SN lockstitch	10-12	\$0.77
Back Sleeve Lining	Join upper & lower sleeves lining with SN lockstitch	10-12	\$0.77
Armhole	Set sleeve lining to armhole	10-12	\$0.60
ESTIMATED COST SUBTOTAL:			\$2.96



LOCATION/PATTERN PIECE/SEAM NAME	CONSTRUCTION/STITCH/SEAM FINISH/TOP STITCH	SPI	EST. COST
Set Lining	Set to shoulder	10-12	\$0.25
Set Lining	Set lining to shell with SN lockstitch	10-12	\$1.04
Pocket Flap Buttons	Attatch 3 Buttons with -X Stitch Sew Buttons	NA	\$0.85
Buttonholes	Pocket Flap	NA	\$1.00
ESTIMATED COST SUBTOTAL:			\$3.14



<div>SKETCHES</div> 				<div>SKETCHES</div> 				<div>SKETCHES</div> 			
Original Jacket Brand		Albert Nipon		Modified Jacket Brand 1		Albert Nipon		Modified Jacket Brand 2		Zara	
Target Market Segment		Womens - Jackets - Designer		Target Market Segment		Womens - Jackets		Target Market Segment		Womens - Jackets	
FABRICS	YARDS	UNIT PRICE	\$ AMOUNT	REVISED FABRICS	YARDS	UNIT PRICE	\$ AMOUNT	REVISED FABRICS	YARDS	UNIT PRICE	\$ AMOUNT
Herringbone	1.75	\$18.00	\$31.50	Herringbone	1.13	\$13.72	\$15.50	Gabardine	2.25	\$6.00	\$13.50
Charmeuse	1.5	\$7.50	\$11.25	Charmeuse	1.5	\$7.50	\$11.25	Interfacing	1	\$2.00	\$2.00
Interfacing	1	\$2.00	\$2.00	Interfacing	1	\$2.00	\$2.00				
% TO TOTAL COST	59%	TOTAL FABRICS	\$44.75	% TO TOTAL COST	49%	TOTAL FABRICS	\$28.75	% TO TOTAL COST	37%	TOTAL FABRICS	\$15.50
TRIMS, THREAD & LABELS	YDS / QTY	UNIT PRICE	\$ AMOUNT	REVISED TRIMS	YDS / QTY	UNIT PRICE	\$ AMOUNT	REVISED TRIMS	YDS / QTY	UNIT PRICE	\$ AMOUNT
4 Hole Metal Buttons	6	\$0.25/PC	\$1.00	4 Hole Metal Buttons	4	\$0.25/PC	\$1.00	4 Hole Metal Buttons	4	\$0.25/PC	\$1.00
Brand Main Label	1	\$0.15/PC	\$0.15	Brand Main Label	1	\$0.15/PC	\$0.15	Brand Main Label	1	\$0.15/PC	\$0.15
Care/Content Label	1	\$0.10/PC	\$0.10	Care/Content Label	1	\$0.10/PC	\$0.10	Care/Content Label	1	\$0.10/PC	\$0.10
Bows	3	\$0.20/PC	\$0.60	Bows	2	\$0.20/PC	\$0.40	Bows	2	\$0.15/PC	\$0.30
Ruffles	1 YD	\$1.00/YD	\$1.00	Ruffles	1 YD	\$0.75/YD	\$0.75				
% TO TOTAL COST	4%	TOTAL TRIMS	\$2.85	% TO TOTAL COST	4%	TOTAL TRIMS	\$2.40	% TO TOTAL COST	4%	TOTAL TRIMS	\$1.55
CMT / LABOR			\$ AMOUNT	REVISED CMT / LABOR			\$ AMOUNT	REVISED CMT / LABOR			\$ AMOUNT
Size Range	XS-XL	Grading Costs	\$0.66	Size Range	XL-XL	Grading Costs	\$0.66	Size Range	XS-XL	Grading Costs	\$0.66
Range	8	Marking Costs	\$0.66	Range	8	Costs	\$0.66	Range	8	Costs	\$0.66
Total # of Pattern Pieces	83	Cutting Costs	\$0.50	Total # of Pattern Pieces	76	Cutting Costs	\$1.12	Total # of Pattern Pieces	73	Cutting Costs	\$0.42
Cut Instructions	2-WAY	Make (Labor)	\$25.65	Cut Instructions	2-WAY	Make (Labor)	\$24.55	Cut Instructions	2-WAY	Make (Labor)	\$22.73
% TO TOTAL COST	37%	TOTAL LABOR	\$27.48	% TO TOTAL COST	46%	TOTAL LABOR	\$26.99	% TO TOTAL COST	59%	TOTAL LABOR	\$24.47
PACKING MATERIALS			\$ AMOUNT	REVISED PACKING MATERIALS			\$ AMOUNT	REVISED PACKING MATERIALS			\$ AMOUNT
Outer Box			\$0.08	Outer Box			\$0.08	Outer Box			\$0.08
Polybag			\$0.10	Polybag			\$0.10	Polybag			\$0.10
% TO TOTAL COST	0%	TOTAL PACKING	\$0.18	% TO TOTAL COST	0%	TOTAL PACKIN	\$0.18	% TO TOTAL COST	0%	TOTAL PACKIN	\$0.18
TOTAL COSTS			\$75.26	REVISED TOTAL COSTS			\$58.32	REVISED TOTAL COSTS			\$41.70
WHOLESALE MARKUP %				REVISED WHOLESALE MARKUP %				REVISED WHOLESALE MARKUP %			
WHOLESALE COST				REVISED WHOLESALE COST				REVISED WHOLESALE COST			
WHOLESALE MARGIN \$ AMT (Profit)				REVISED WHOLE SALE MARGIN \$ AMT (Profit)				REVISED WHOLE SALE MARGIN \$ AMT (Profit)			
RETAIL MARKUP %			70.0%	REVISED RETAIL MARKUP %			70.0%	REVISED RETAIL MARKUP %			70.0%
ESTIMATED RETAIL PRICE			\$250.87	REVISED ESTIMATED RETAIL PRICE			\$194.40	REVISED ESTIMATED RETAIL PRICE			\$139.00

Tailor Jacket with Patch Pockets + Ruffles



Original Jacket: Albert Nipon
Target Market: Missy
Retail Price: \$250

Shell: Herringbone, 100% Wool
Lining: Charmeuse, 100% Silk
Trim: Metal 4 Hole Buttons, Polyester Bows (x3),
Ruffles
Pattern Pieces: 83
Cut: 2-Way
Construction: SN Lockstitch, Patch Pocket,
Princess Seam, Pocket Flap, Back Darts
Size Ranges: XS, S, M, L, XL

Tailor Jacket with Patch Pockets + Ruffles



Original Jacket: Albert Nipon
Target Market: Missy
Retail Price: \$194



Shell: Herringbone, 100% Wool
Lining: Charmeuse, 100% Silk
Trim: Metal 4 Hole Buttons, Polyester Bows (x2),
Ruffles
Pattern Pieces: 76
Cut: 2-Way
Construction: SN Lockstitch, Patch Pocket,
Dart, Pocket Flap
Size Ranges: XS, S, M, L, XL

Tailor Jacket with Patch Pockets



Original Jacket: Zara
Target Market: Missy
Retail Price: \$139

Shell: Gabardine, 100% Cotton
Lining: Polyester Lining, 100% Polyester
Trim: Metal 4 Hole Buttons (x4), Polyester Bows (x2),
Pattern Pieces: 73
Cut: 2-Way
Construction: SN Lockstitch, Patch Pocket,
Dart, Pocket Flap
Size Ranges: XS, S, M, L, XL

FIRST COST SHEET - JACKET															
SEASON:		WINTER 2025		DATE:		February 27th, 2024									
GROUP NAME:		CLASSICS		STYLE #:		KT-2221									
SIZE CLASSIFICATION / RANGE:		8		TECHNICAL DESIGNER:		Katie Moylan									
FABRIC NAME:		Herringbone		PRODUCT CATEGORY:		Jackets									
FIBER CONTENT:		100% Wool		BRAND / LABEL:		Albert Nipon									
STYLE DESCRIPTION:		Womens Tailor Jacket													
FABRICS				SKETCH											
	YARDS	UNIT PRICE	\$ AMOUNT												
Herringbone	1.75	\$18.00	\$31.50												
Charmeuse	1.5	\$7.50	\$11.25												
Interfacing	1	\$2.00	\$2.00												
TOTAL FABRICS			\$44.75												
PERCENT TO TOTAL COST			59.46%												
TRIMS, THREAD & LABELS															
	YDS / QTY	UNIT PRICE	\$ AMOUNT												
4 Hole Metal Buttons	6	\$0.25/PC	\$1.00												
Brand Main Label	1	\$0.15/PC	\$0.15												
Care/Content Label	1	\$0.10/PC	\$0.10												
Bows	3	\$0.20/PC	\$0.60												
Ruffles	1 YD	\$1.00/YD	\$1.00												
TOTAL TRIMS			\$2.85												
PERCENT TO TOTAL COST			3.79%												
CMT / LABOR				\$ AMOUNT											
Size Range	XS-XL	Grading Costs	0.664												
Total # of Sizes in Size Range	8	Marking Costs	0.664												
Total # of Pattern Pieces	83	Cutting Costs	0.5												
Cut Instructions	2-WAY	Make (Labor)	25.65												
TOTAL CMT/ LABOR			\$27.48												
PERCENT TO TOTAL COST			36.51%												
PACKING MATERIALS				\$ AMOUNT											
Outer Box			\$0.08												
Polybag			\$0.10												
TOTAL PACKING MATERIALS			\$0.18	TOTAL COSTS		\$75.26	WHOLESALE COST								
PERCENT TO TOTAL COST			0.24%	WHOLESALE MARKUP %			RETAIL MARKUP %		70%						
				WHOLESALE MARGIN \$ AMT			ESTIMATED RETAIL PRICE		\$250.87						